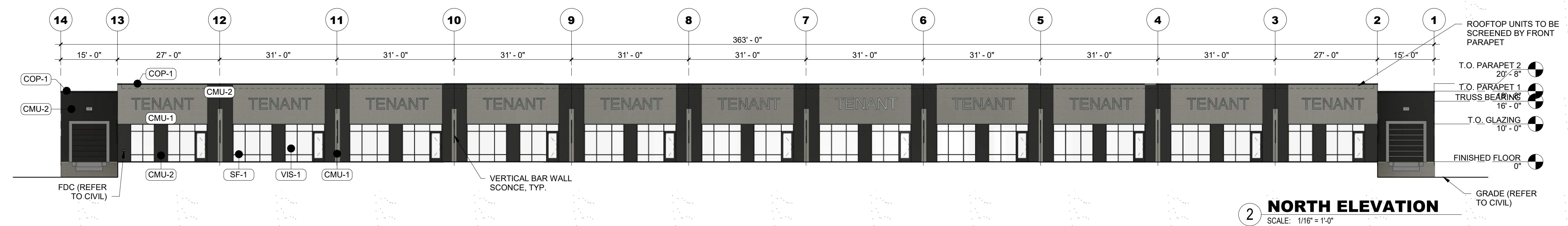
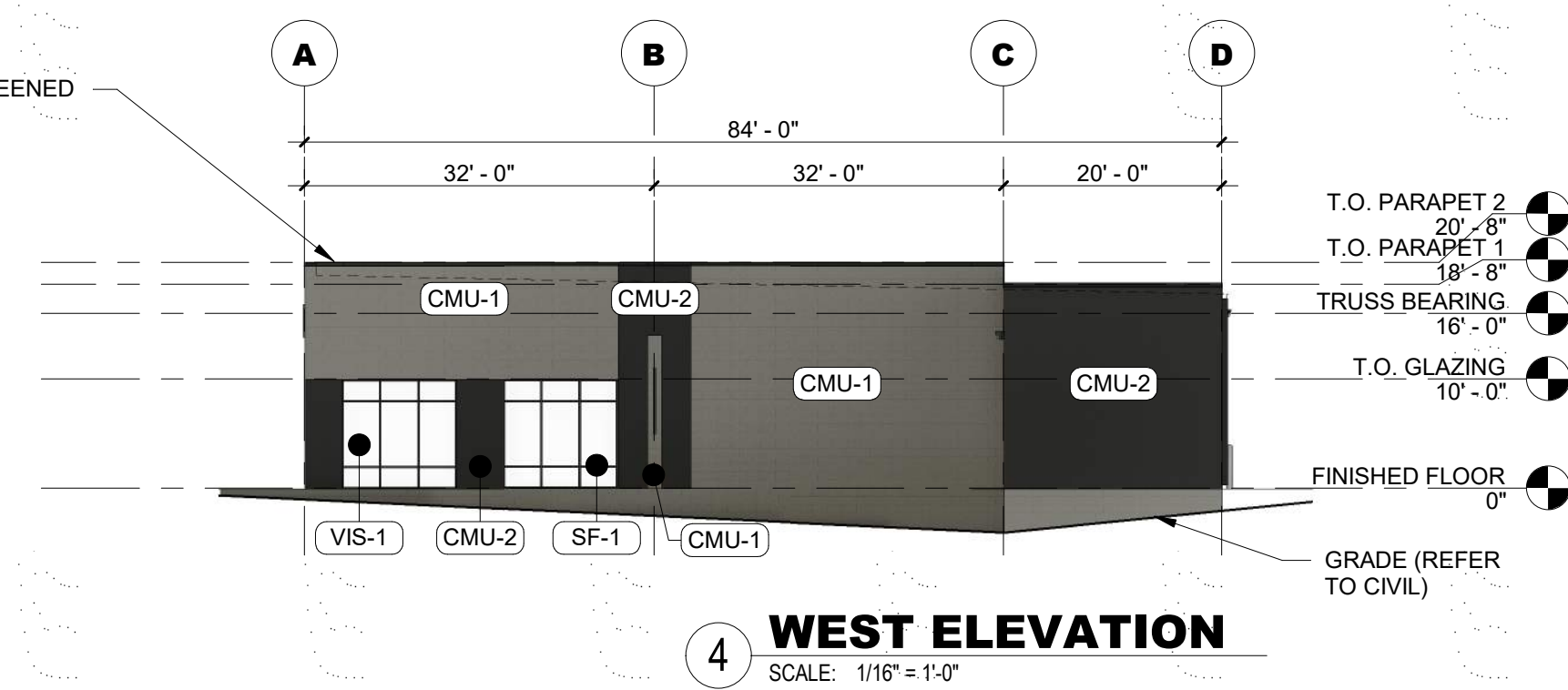
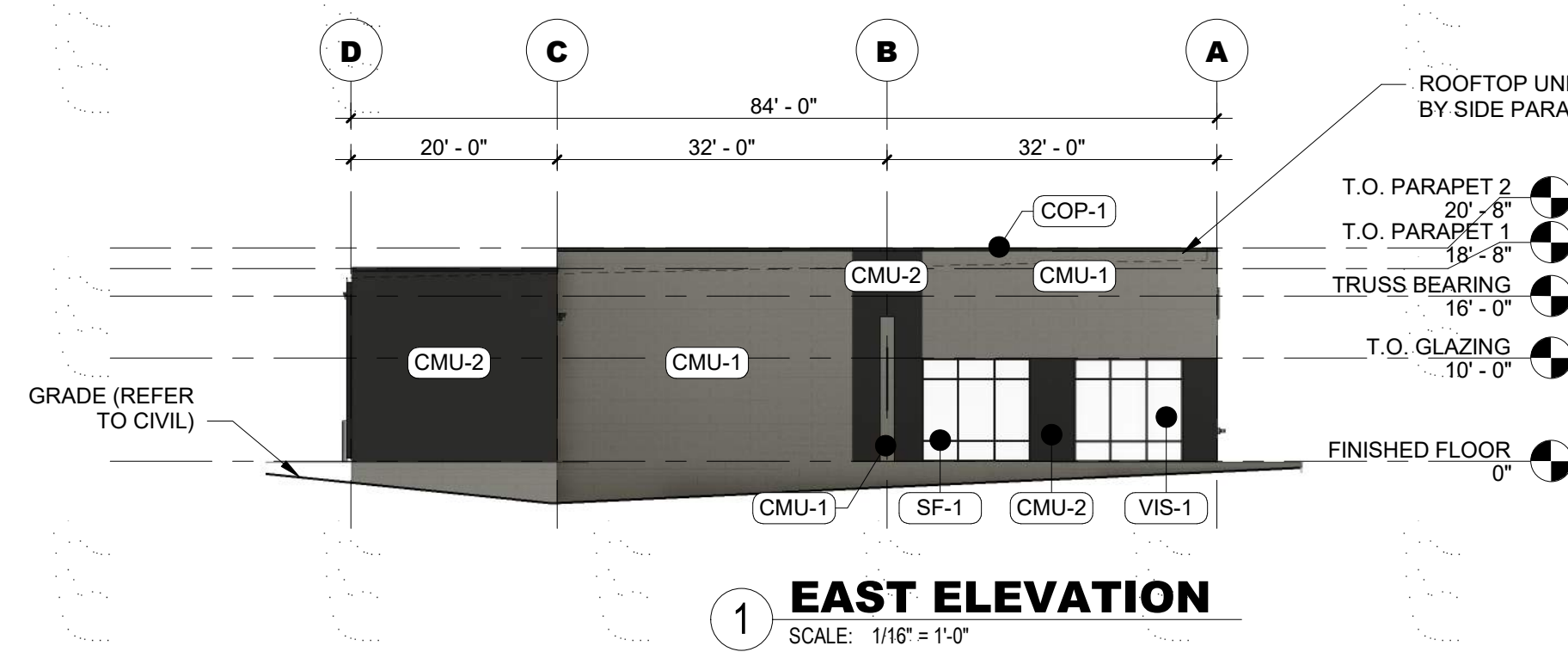


EXTERIOR MATERIAL LEGEND	
MAT. LABEL	MATERIAL DESCRIPTION
CMU-1	8"x8"x16" CMU BLOCK, VERTICAL JOINTS STAGGERED, GROUTED & REINFORCED CELLS (REFER TO STRUCTURAL FOR REINFORCEMENT); COLOR: GRAY
CMU-2	8"x8"x16" SPLIT FACE CMU, VERTICAL JOINTS STAGGERED, GROUTED & REINFORCED CELLS (REFER TO STRUCTURAL FOR REINFORCEMENT); COLOR: CHARCOAL
COP-1	PREFINISHED METAL COPING; COLOR: BLACK
DS-1	PREFINISHED METAL DOWNSPOUT; COLOR: BLACK
GUT-1	CONTINUOUS OVERSIZED PREFINISHED METAL GUTTER; COLOR: BLACK
SF-1	T.B. ALUMINUM STOREFRONT FRAMING; COLOR: BLACK
VIS-1	1" INSULATED VISION GLASS; CLEAR W/ LOW E COATING

- TYPICAL U.O.N
- EXPOSED CONCRETE: GRIND SMOOTH & RUBCOAT WITH CEMENT SLURRY.
 - EXPOSED LINTELS: GALVANIZED AND PAINTED TO MATCH ADJ. MATERIAL.
 - SCUPPERS, GUTTERS, & DOWNSPOUTS: METAL PREFINISHED TO MATCH ADJ. MATERIAL.
 - CAULKS & SEALANTS: COLOR MATCHED TO ADJ. MATERIALS.
 - HOLLOW METAL MAN DOORS & FRAMES: PAINTED TO MATCH ADJ. MATERIALS.
 - LIGHT FIXTURES: METAL PRE-FINISHED HOUSINGS TO MATCH ADJ. OPENING FRAMING.

MATERIAL CALCULATIONS (CITY OF WAUKEE)					
NORTH ELEVATION (FRONT)			7,442 SF TOTAL		
FENESTRATIONS =	2,413 SF	32.0%			
SPLIT FACE CMU =	2,022 SF	27.0%			
STANDARD CMU =	3,007 SF	41.0%			
Secondary materials shall not comprise more than 40% of all elevations.					
SOUTH ELEVATION			6,459 SF TOTAL		
FENESTRATIONS =	2,141 SF	44.0%			
SPLIT FACE CMU =	0 SF	15.0%			
STANDARD CMU =	4,318 SF	30.0%			
Secondary materials shall not comprise more than 40% of all elevations.					
EAST ELEVATION			1,696 SF TOTAL		
FENESTRATIONS =	210 SF	12.0%			
SPLIT FACE CMU =	571 SF	34.0%			
STANDARD CMU =	915 SF	54.0%			
Secondary materials shall not comprise more than 40% of all elevations.					
WEST ELEVATION			1,696 SF TOTAL		
FENESTRATIONS =	210 SF	12.0%			
SPLIT FACE CMU =	571 SF	34.0%			
STANDARD CMU =	915 SF	54.0%			
Secondary materials shall not comprise more than 40% of all elevations.					



This drawing has been prepared by the Architect, or under the Architect's direct supervision. This drawing is provided as an instrument of service by the Designer / Architect and is intended for use on this project only. Any reproduction, use, or disclosure of information contained herein without the prior written consent of the Architect is strictly prohibited. (C) Copyright 2021 by Simonson & Associates Architects, L.L.C.

JAMES POINTE LOTS 22 & 23

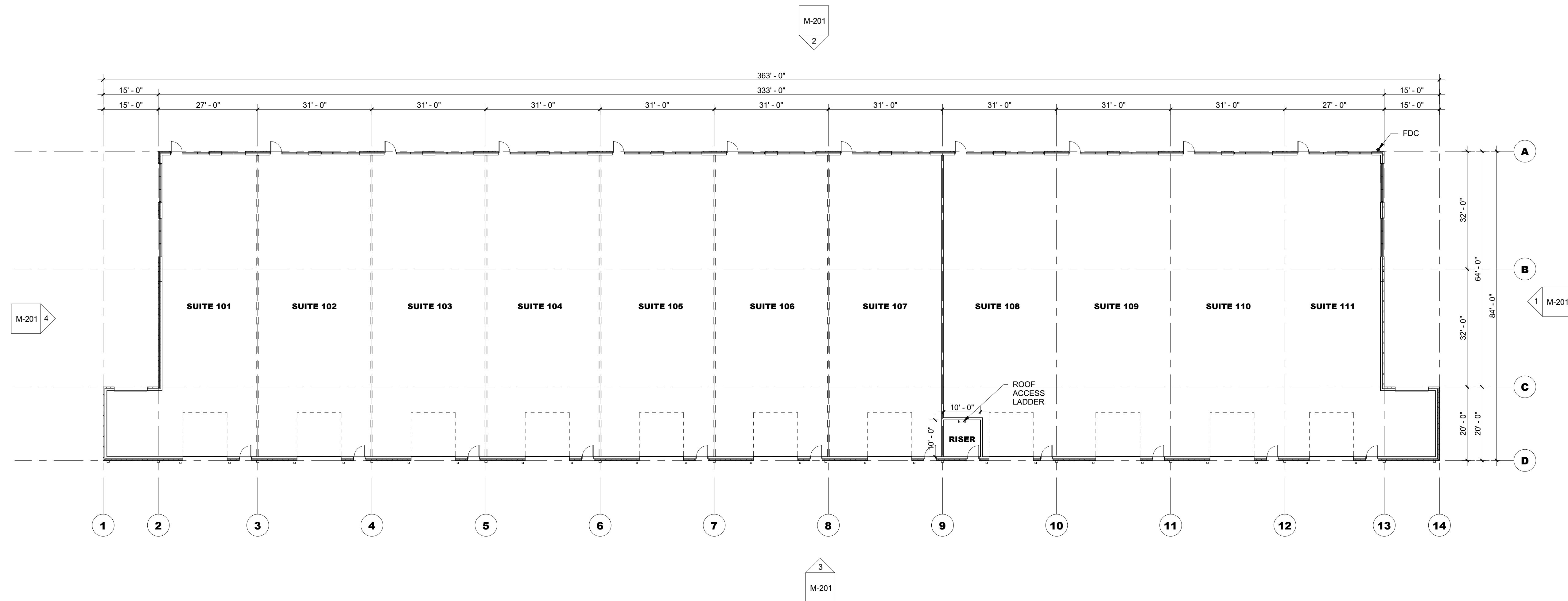
WAUKEE, IA

12/21/2021

24"x36" SHEET (FULL SIZE)
- SCALE IS AS NOTED
12"x18" SHEET (HALF SIZE)
- SCALE IS ONE-HALF OF WHAT IS NOTED
OTHER SHEET SIZES NOT TO SCALE
SAA JOB #: 21137

simonson

Simonson & Associates Architects LLC
1717 Ingersoll Avenue Suite 117 Des Moines IA 50309
PHN 515 440 5626 WWW.SIMONSONASSOC.COM



This drawing has been prepared by the Architect, or under the Architect's direct supervision. This drawing is provided as an instrument of service by the Designer / Architect and is intended for use on this project only. Any reproduction, use, or disclosure of information contained herein without the prior written consent of the Architect is strictly prohibited. (C) Copyright 2021 by Simonson & Associates Architects, L.L.C.

JAMES POINTE LOTS 22 & 23

WAUKEE, IA

12/21/2021

24"x36" SHEET (FULL SIZE)
 - SCALE IS AS NOTED
 12"x18" SHEET (HALF SIZE)
 - SCALE IS ONE-HALF OF WHAT IS NOTED
 OTHER SHEET SIZES NOT TO SCALE
 SAA JOB #: 21137

simonson

simonson & associates architects llc
 1717 ingsoll avenue suite 117 des moines ia 50309
 phn 515 440 5626 www.simonsonassoc.com



This drawing has been prepared by the Architect, or under the Architect's direct supervision. This drawing is provided as an instrument of service by the Designer / Architect and is intended for use on this project only. Any reproduction, use, or disclosure of information contained herein without the prior written consent of the Architect is strictly prohibited. (C) Copyright 2021 by Simonson & Associates Architects, L.L.C.

JAMES POINTE LOTS 22 & 23

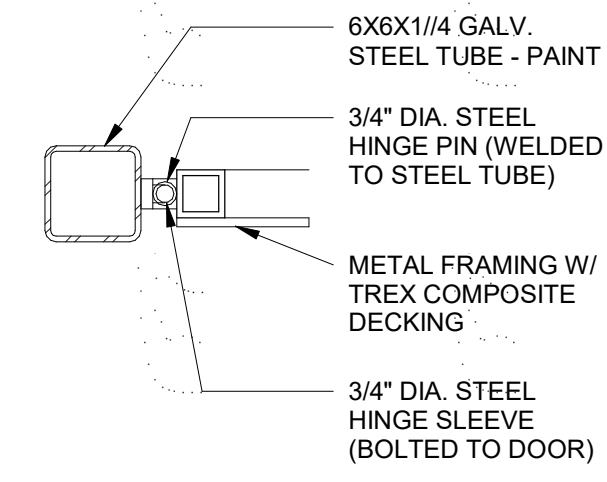
WAUKEE, IA

12/21/2021

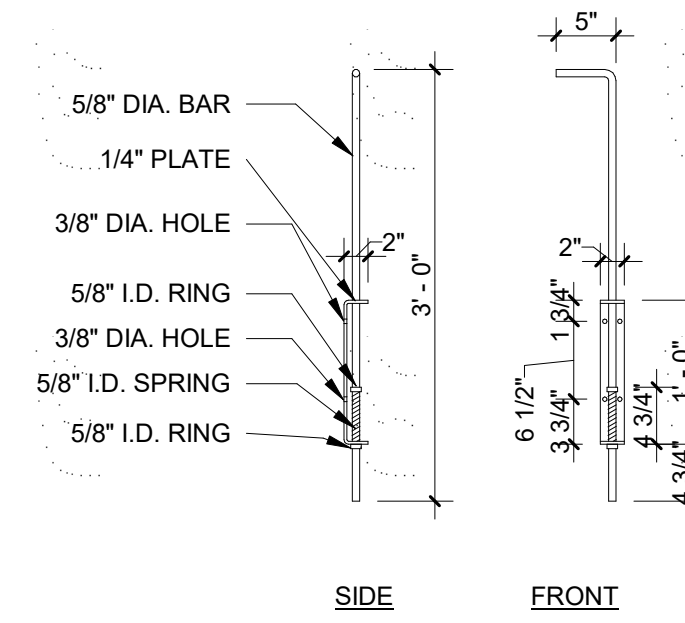
24"x36" SHEET (FULL SIZE)
 - SCALE IS AS NOTED
 12"x18" SHEET (HALF SIZE)
 - SCALE IS ONE-HALF OF WHAT IS NOTED
 OTHER SHEET SIZES NOT TO SCALE
 SAA JOB #: 21137

simonson

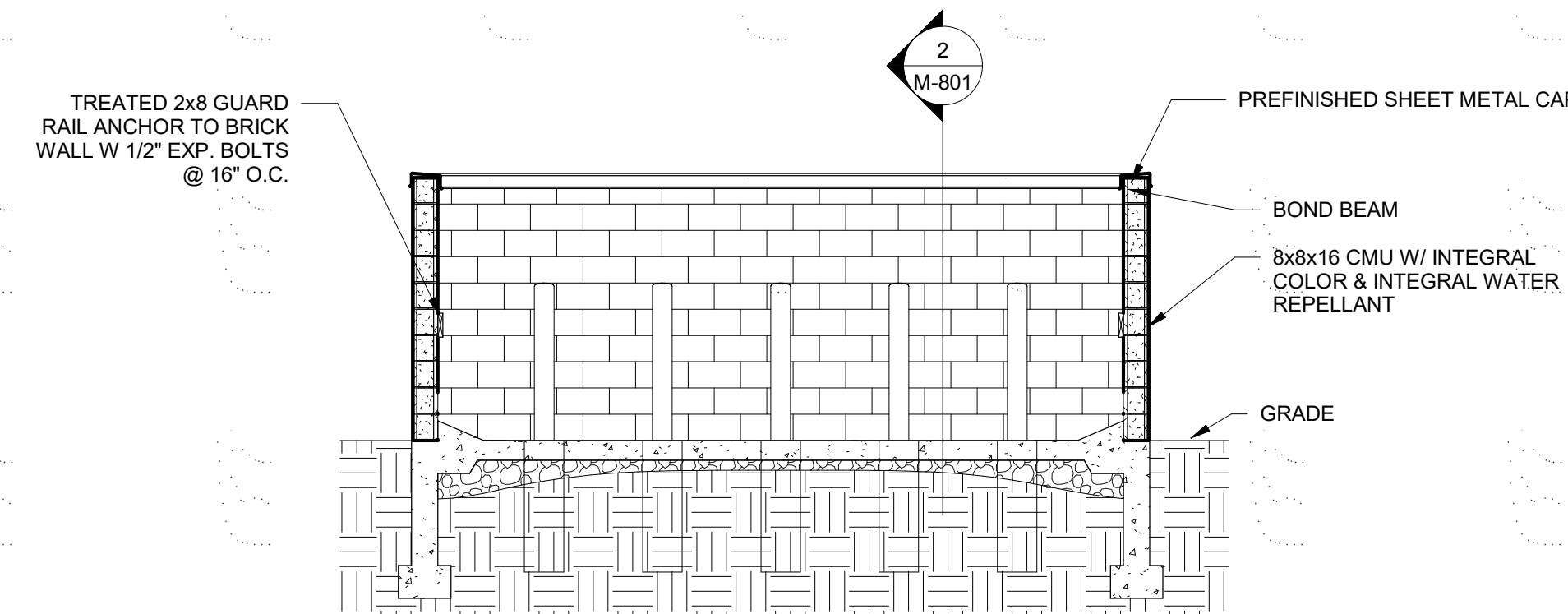
simonson & associates architects llc
 1717 ingsoll avenue suite 117 des moines ia 50309
 phn 515 440 5626 www.simonsonassoc.com



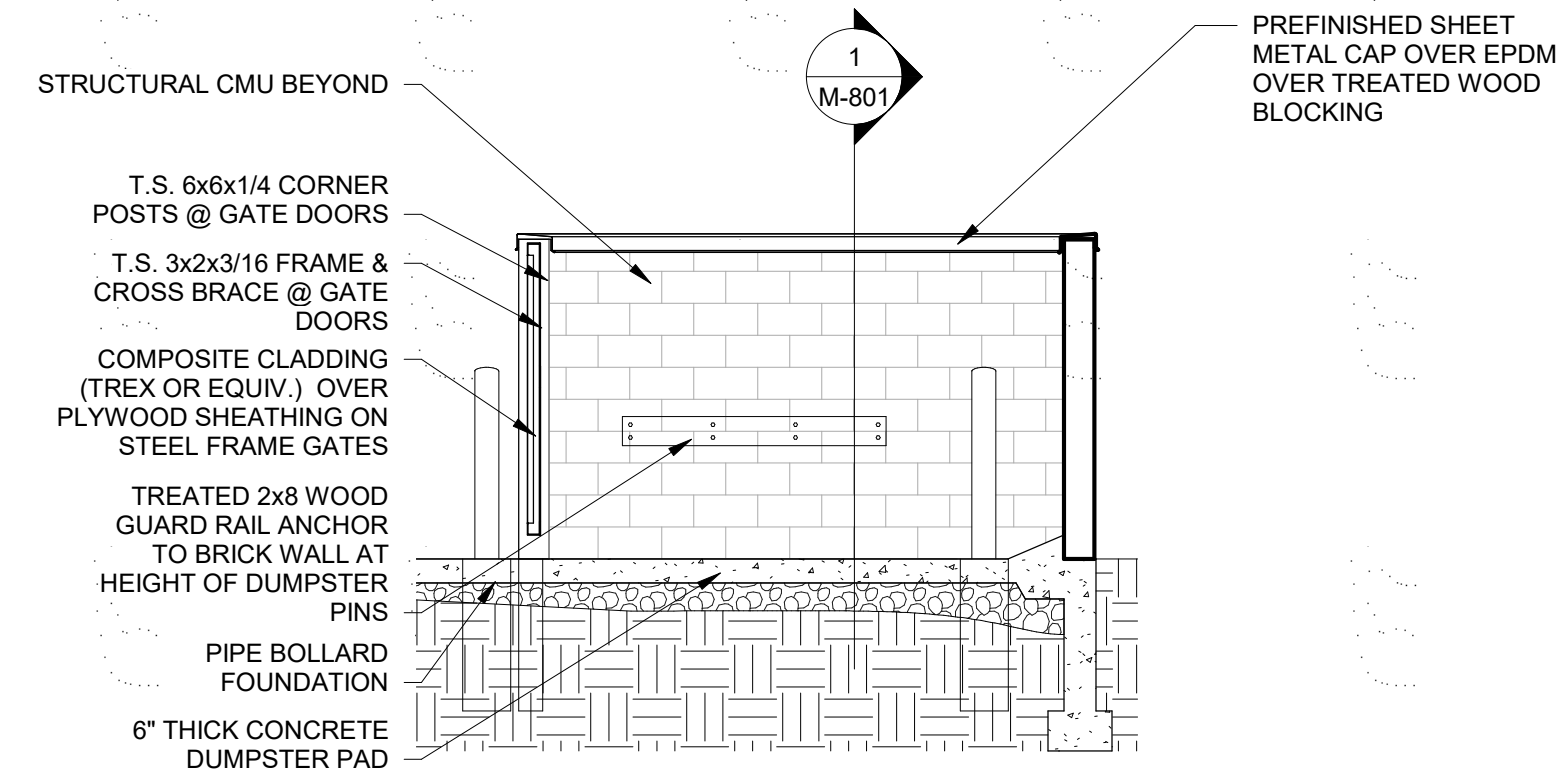
6 TRASH HINGE
SCALE: 1 1/2" = 1'-0"



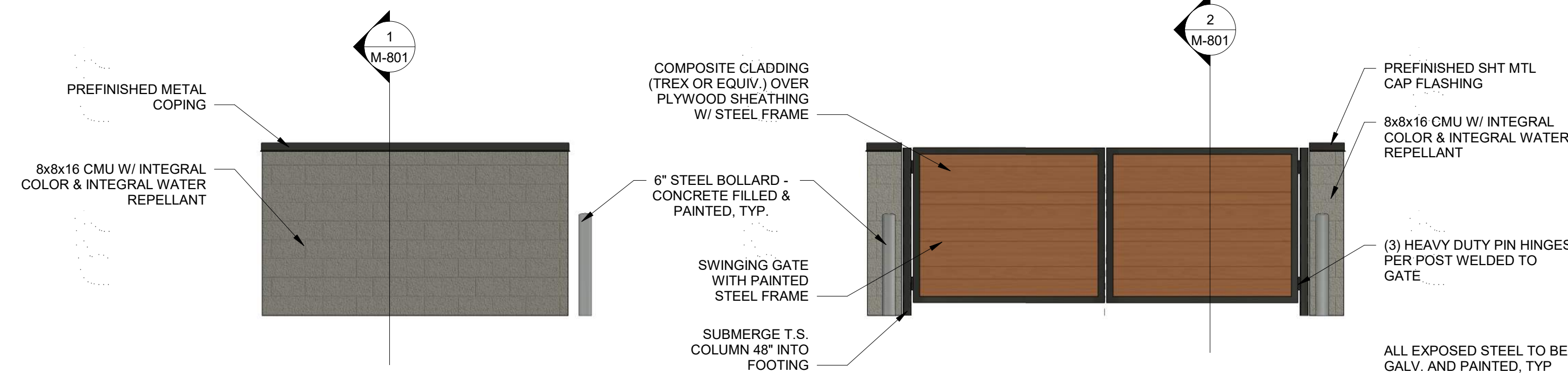
7 TRASH PIN
SCALE: 3/4" = 1'-0"



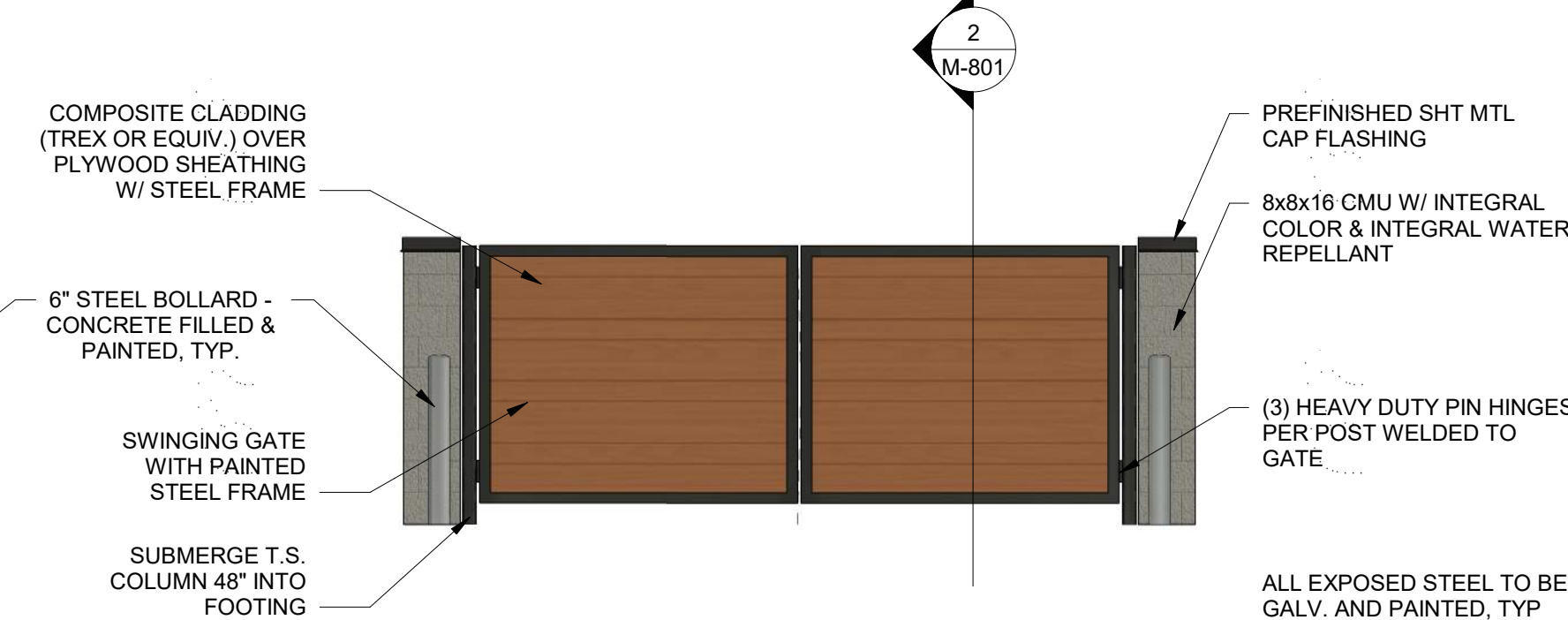
1 TRASH ENCLOSURE SECTION
SCALE: 1/4" = 1'-0"



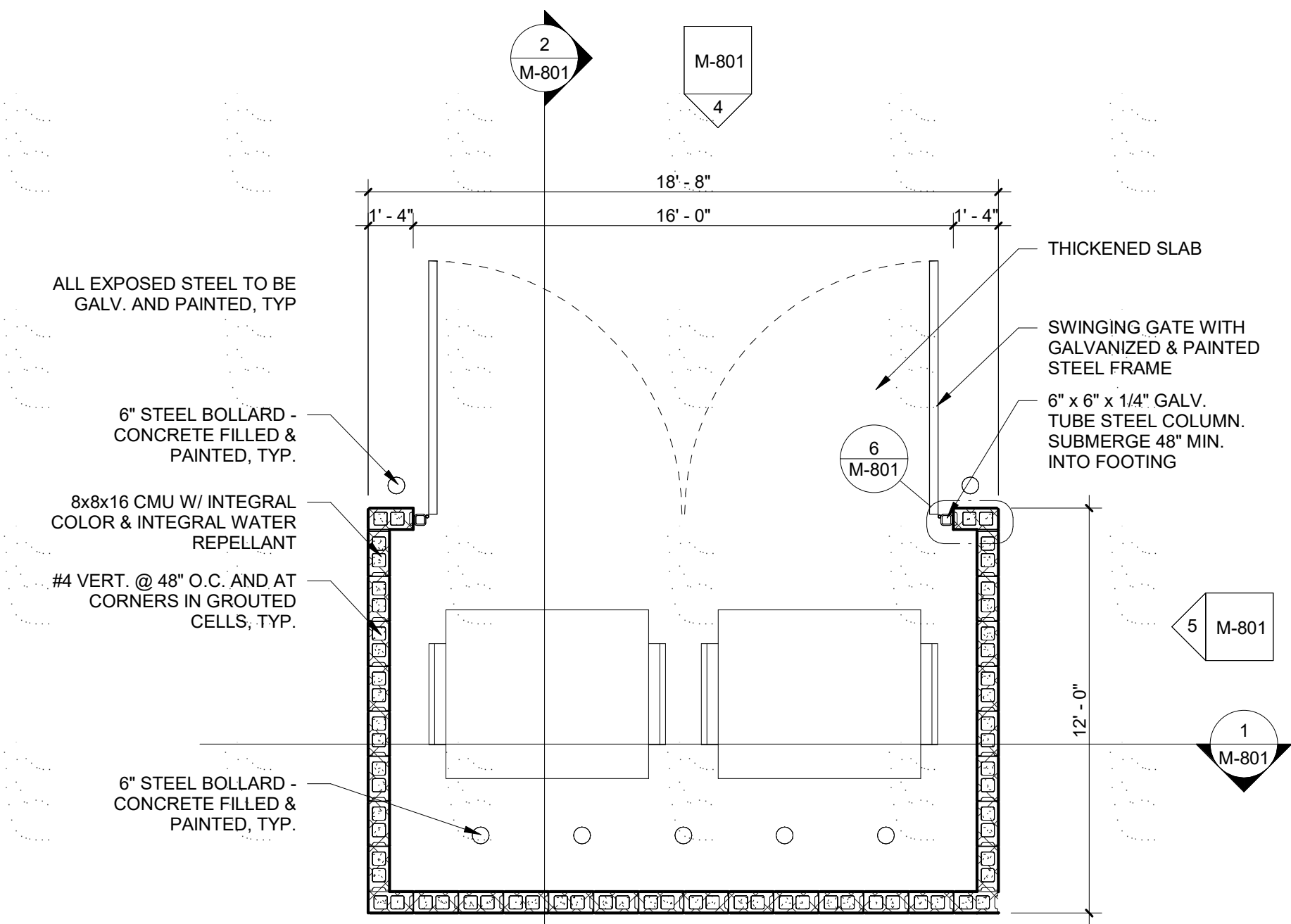
2 TRASH ENCLOSURE SECTION
SCALE: 1/4" = 1'-0"



5 TRASH ENCLOSURE SIDE
SCALE: 1/4" = 1'-0"



4 TRASH ENCLOSURE FRONT
SCALE: 1/4" = 1'-0"



3 TRASH ENCLOSURE PLAN
SCALE: 1/4" = 1'-0"

This drawing has been prepared by the Architect, or under the Architect's direct supervision. This drawing is provided as an instrument of service by the Designer / Architect and is intended for use on this project only. Any reproduction, use, or disclosure of information contained herein without the prior written consent of the Architect is strictly prohibited. © Copyright 2021 by Simonson & Associates Architects, L.L.C.

JAMES POINTE LOTS 22 & 23

WAUKEE, IA

12/21/2021

24"x36" SHEET (FULL SIZE)
- SCALE IS AS NOTED
12"x18" SHEET (HALF SIZE)
- SCALE IS ONE-HALF OF WHAT IS NOTED
OTHER SHEET SIZES NOT TO SCALE
SAA JOB #: 21137

simonson

simonson & associates architects llc
1717 ingersoll avenue suite 117 des moines ia 50309
phn 515 440 5626 www.simonsonassoc.com