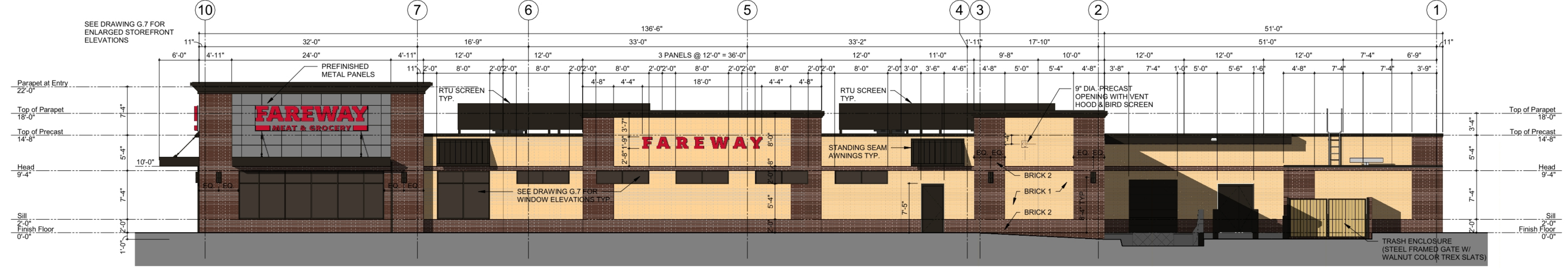


A Receiving Room Elevation
 1/8" = 1'-0"

B South Elevation
 1/8" = 1'-0"

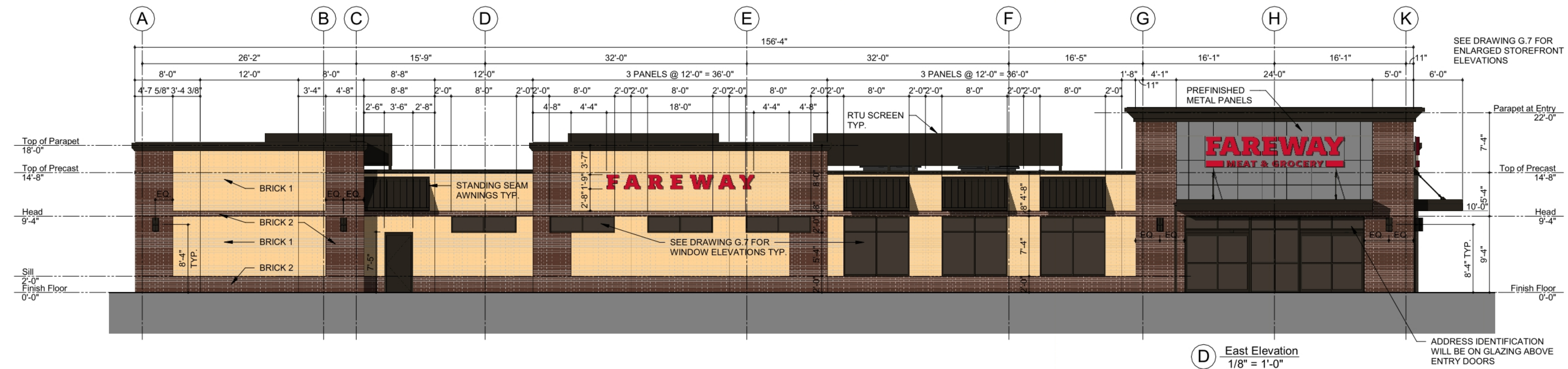


C North Elevation
 1/8" = 1'-0"



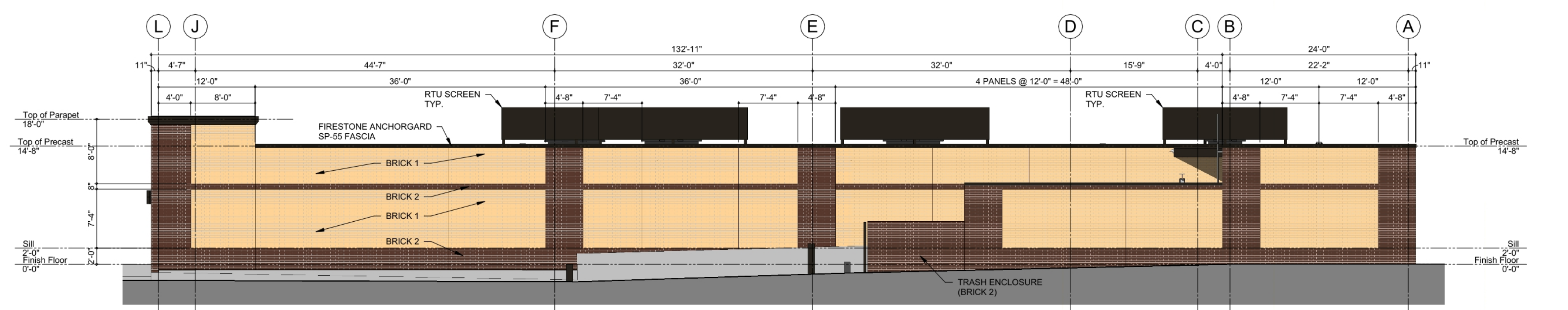
Entry Sign Elevation
 1/4" = 1'-0"

EXTERIOR MATERIAL SCHEDULE					
Wall	Brick	Metal Fascia	Awning	Metal Panel	Openings Door/Window
South Wall	Area 2,693 SF % 97%	92 SF 3%	-	-	-
North Wall	Area 2,377 SF % 71%	241 SF 7%	67 SF 2%	228 SF 7%	426 SF 13%
East Wall	Area 1,832 SF % 64%	185 SF 6%	134 SF 5%	228 SF 8%	471 SF 17%
West Wall	Area 2,393 SF % 96%	91 SF 4%	-	-	-
Totals	Area 9,295 SF % 81%	609 SF 5%	201 SF 2%	456 SF 4%	897 SF 8%



D East Elevation
 1/8" = 1'-0"

NOTES	
Modular Thin Brick 1:	Main Brick Field (Light Brick) Endicott Modular Keyback Thin Brick Embedded in Precast Color: 100% Golden Buff Texture: Velour
Modular Thin Brick 2:	Brick Below +2'-0", 8" Horizontal Band & Vertical Columns (Dark Brick) Endicott Modular Keyback Thin Brick Embedded in Precast Color: 70% Dark Sandstone, 20% Executive Ironspot, 10% Sienna Ironspot Texture: Velour
Fascia, Flashing, Trim & RTU Screens:	Firestone UNA-CLAD 24 Gage Galvanized Steel Dark Bronze Kynar 500 / Hylar 5000 Siliconized Modified Polyester
Metal Soffit Panels:	Firestone UNA-CLAD UC-500 12" Panel Width 24 Gage Galvanized Steel Dark Bronze Kynar 500 / Hylar 5000 Siliconized Modified Polyester
Standing Seam at Sloped Awnings:	Firestone UNA-CLAD UC-4 9.75" Panel Width 24 Gage Galvanized Steel Dark Bronze Kynar 500 / Hylar 5000 Siliconized Modified Polyester
Steel Doors & Frames, Steel Sectional Door:	See Door Schedule Exterior Door Paint Color: Dark Bronze Field Painted Finish Interior Door Paint Color: Sherwin Williams - Fareway Tan
Metal Panels Above Entry Canopies:	Architectural Systems AL13 Aluminum Composite Panels Color: CC054
Aluminum Storefront:	2" x 4, 1/2" Thermally Broken Framing Dark Bronze Anodized
Building Sign Type #1:	Individual Letter Backlit Red Molded Plastic
Building Sign Type #2:	Cabinet Sign



E West Elevation
 1/8" = 1'-0"

REVISION	DESCRIPTION

Retail Store: West Waukele, Waukele, IA 50263
Fareway Stores, Inc.
 2300 East Eighth Street, Boone, Iowa 50036



BUILDING ELEVATIONS

PROJECT NO:
21-034-01
 ISSUE DATE:
28 JAN 2022

G.5

PRELIMINARY

1/28/22 8:11:16 AM \\Mac\Projects\2102-034-01\Fareway West Waukele\G.5.dwg(Rev\02-034-01\Fareway - West Waukele.rvt)