



1680 SW Ankeny Rd, #2D  
 Ankeny, IA 50023  
 Phone: (515) 597-5457  
 Fax: (515) 597-5461  
 www.jcorpdesignbuild.com

KEY PLAN

PROJECT: **HICKMAN MULTI-FAMILY**  
 REVISIONS:

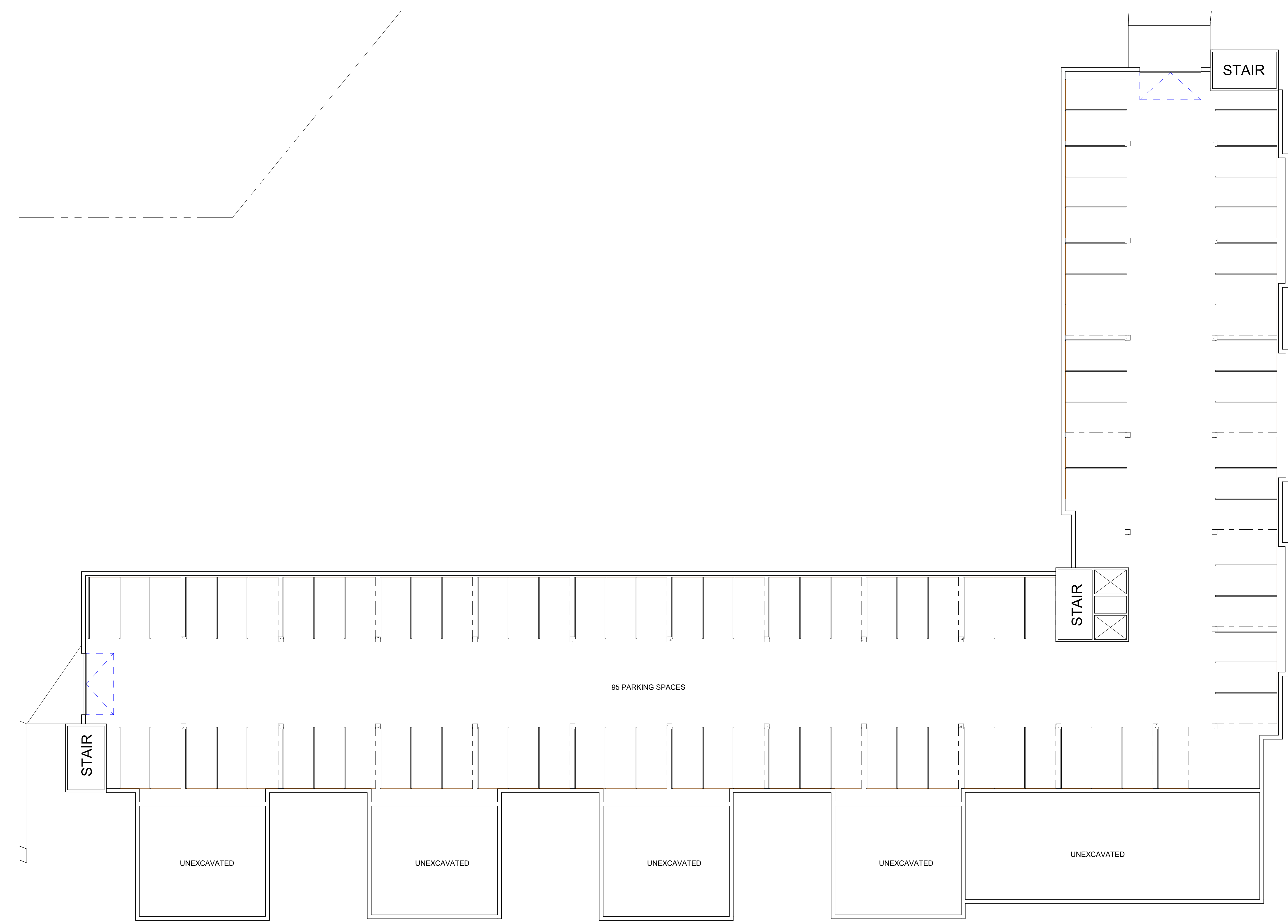

1 / 18 / 2022

PROJECT NO: 19-051

CONTENTS:  
 Parking Level Plan

SHEET NO:  
**A100**

PRELIMINARY- NOT FOR CONSTRUCTION



**1** BASEMENT  
 SCALE: 1/16" = 1'-0"



1680 SW Ankeny Rd, #2D  
 Ankeny, IA 50023  
 Phone: (515) 597-5457  
 Fax: (515) 597-5461  
 www.jcorpdesignbuild.com

KEY PLAN

PROJECT:

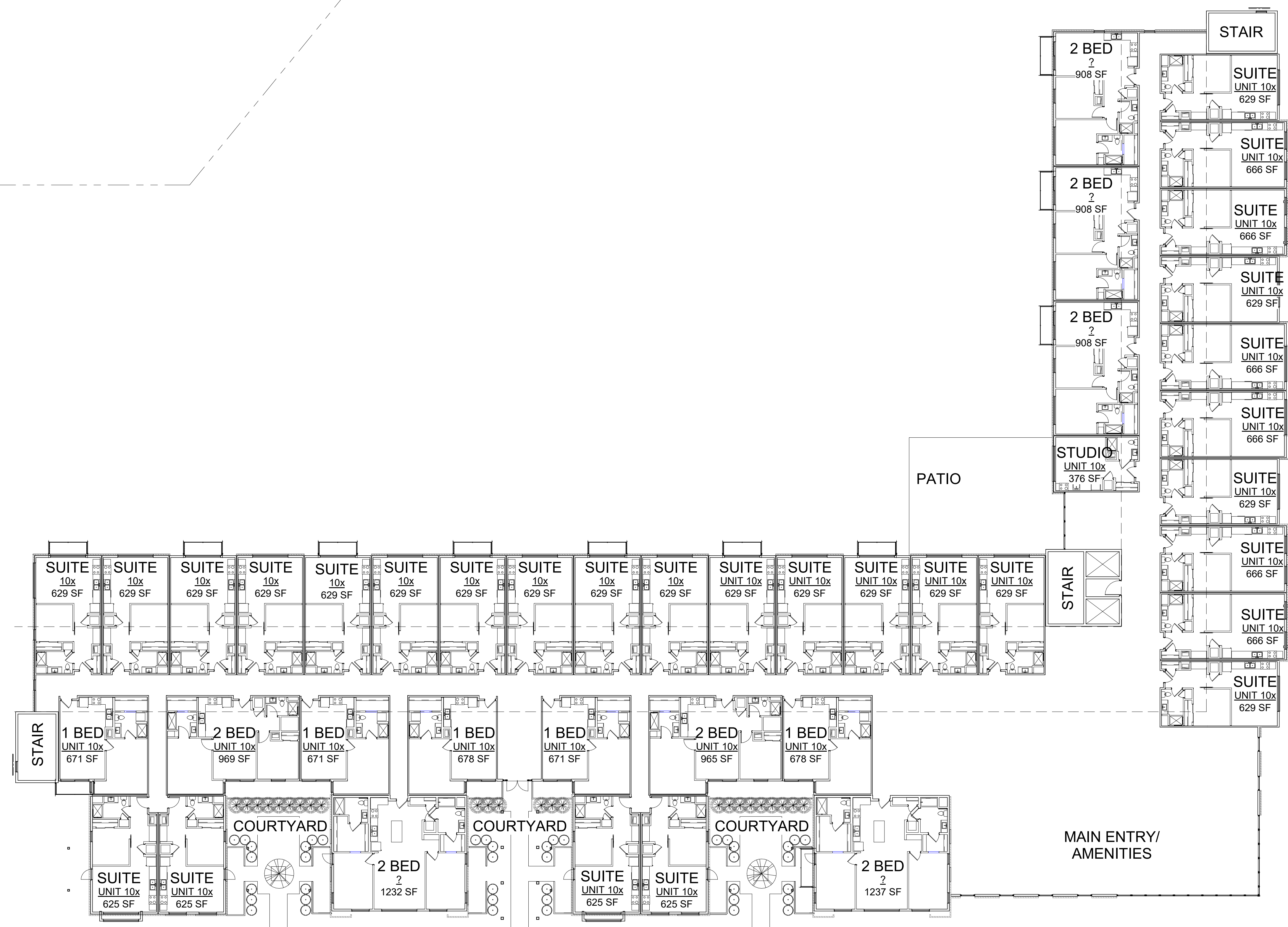
REVISIONS:


1 / 18 / 2022  
 PROJECT NO: 19-051  
 CONTENTS:  
 First Floor Plan

SHEET NO:  
**A101**

PRELIMINARY- NOT FOR CONSTRUCTION

**HICKMAN MULTI-FAMILY**



**1 1ST FLOOR MINI**  
 SCALE: 1/16" = 1'-0"





1680 SW Ankeny Rd, #2D  
 Ankeny, IA 50023  
 Phone: (515) 597-5457  
 Fax: (515) 597-5461  
 www.jcorpdesignbuild.com

KEY PLAN

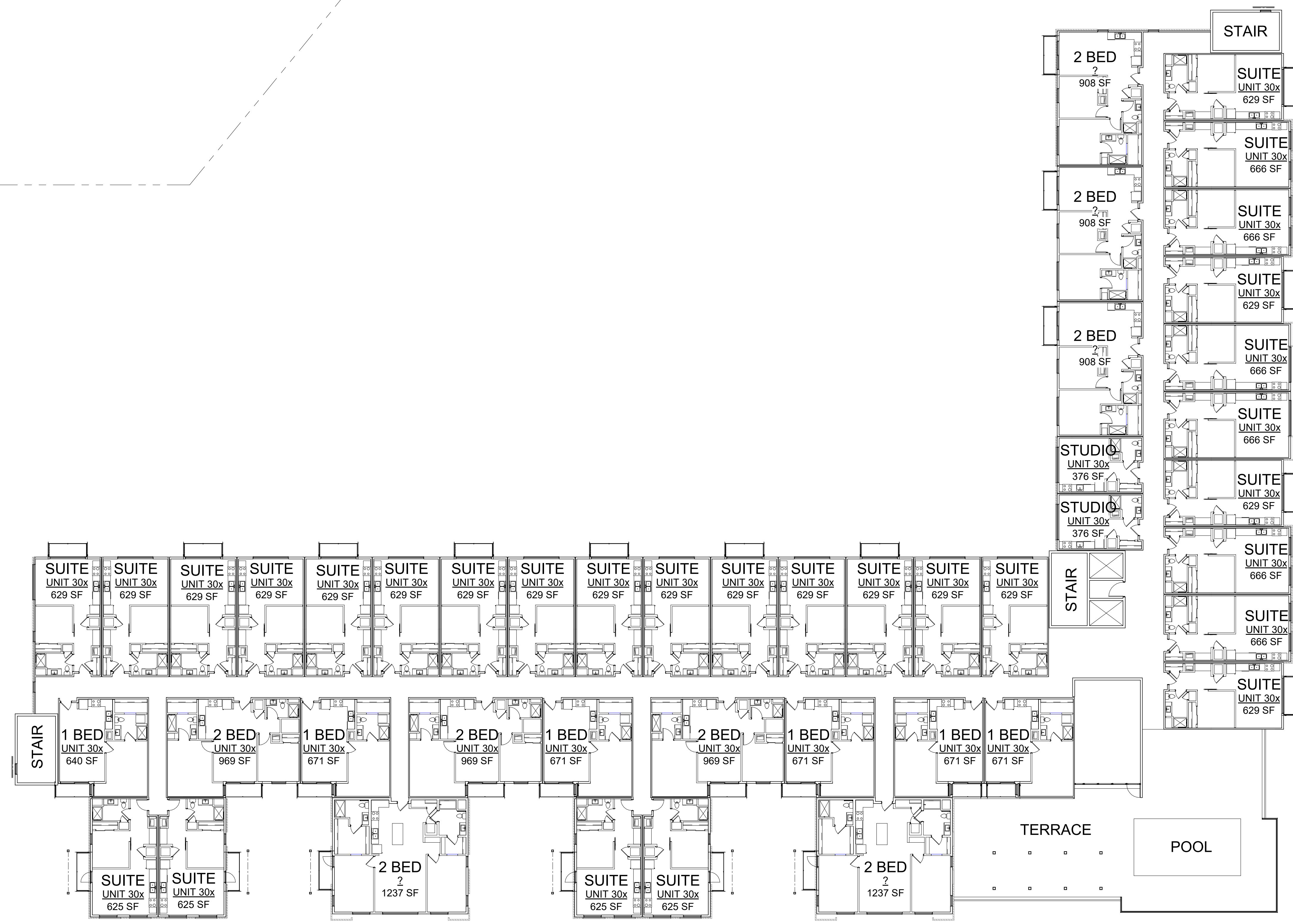
PROJECT:

REVISIONS:


1 / 18 / 2022  
 PROJECT NO: 19-051  
 CONTENTS:  
 Third Floor Plan

SHEET NO:  
**A103**

PRELIMINARY- NOT FOR CONSTRUCTION



**1** 3RD FLOOR  
 SCALE: 1/16" = 1'-0"



1680 SW Ankeny Rd, #2D  
 Ankeny, IA 50023  
 Phone: (515) 597-5457  
 Fax: (515) 597-5461  
 www.jcorpdesignbuild.com

KEY PLAN

PRELIMINARY- NOT FOR CONSTRUCTION

PROJECT: **HICKMAN MULTI-FAMILY**

REVISIONS:

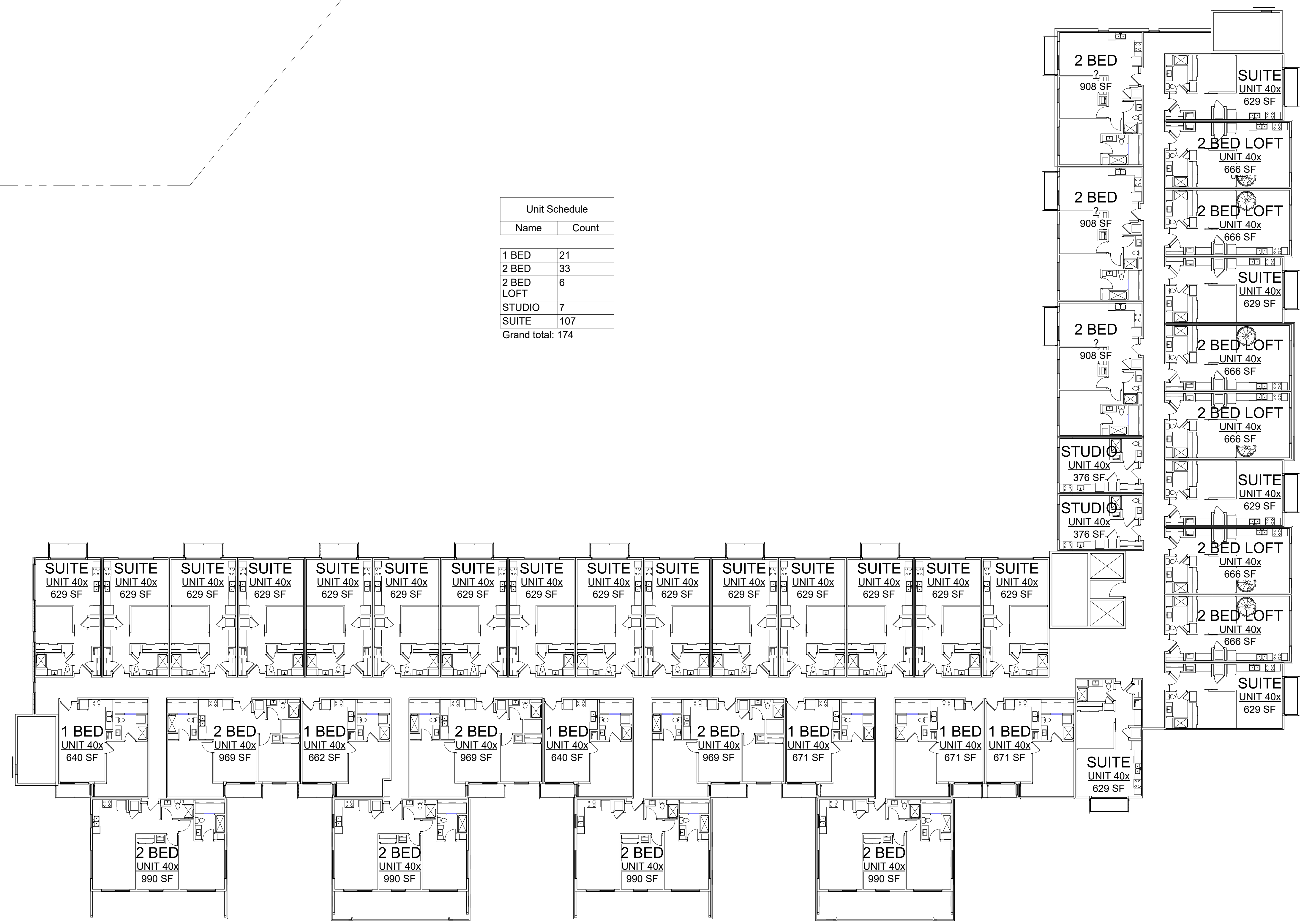
1 / 18 / 2022

PROJECT NO: 19-051

CONTENTS:  
Fourth Floor Plan

SHEET NO:  
**A104**

Unit Schedule	
Name	Count
1 BED	21
2 BED	33
2 BED LOFT	6
STUDIO	7
SUITE	107
Grand total: 174	



**1** 4TH FLOOR  
 SCALE: 1/16" = 1'-0"



1 VIEW FROM SW  
SCALE:



3 AERIAL VIEW  
SCALE:



JCorp

1680 SW Ankeny Rd, #2D  
Ankeny, IA 50023  
Phone: (515) 597-5457  
Fax: (515) 597-5461  
www.jcorpdesignbuild.com

KEY PLAN

PRELIMINARY - NOT FOR CONSTRUCTION

PROJECT: HICKMAN MULTI-FAMILY

REVISIONS:

1 / 18 / 2022

PROJECT NO: 19-051

CONTENTS:  
3d Views

SHEET NO:  
**A106**