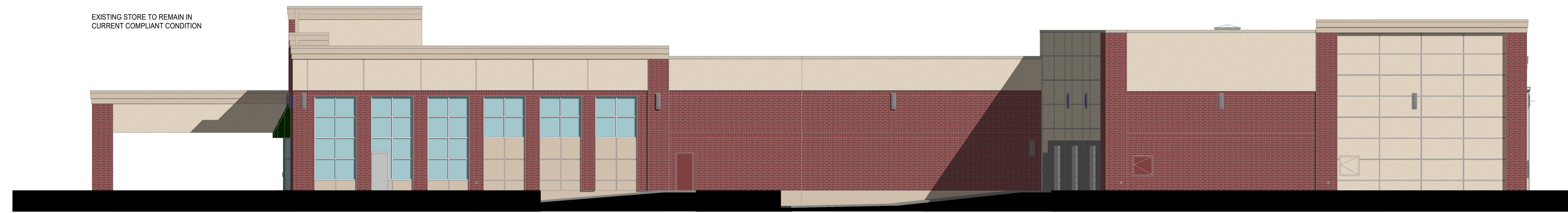




MATERIALS AT PROPOSED BUILDING ADDITION:

- 34% BRICK
- 30% EIFS
- 26% ARCHITECTURALLY FINISHED PRECAST CONCRETE PANEL
- 10% GLAZING



1 EAST ELEVATION

SCALE: 3/32" = 1'-0"



2 SOUTH ELEVATION A

SCALE: 3/32" = 1'-0"



3 SOUTH ELEVATION B

SCALE: 3/32" = 1'-0"

REVISION	DATE BY

**brr**

Architect of Record: Trevor Tyson Holcomb  
BRR Architecture, Inc.

Kansas City: 8131 Metcalf Ave  
Overland Park, KS 66204  
Tel: 913-262-9095

Phoenix: Suite 200  
Overland Park, KS 66204  
Tel: 913-262-9044

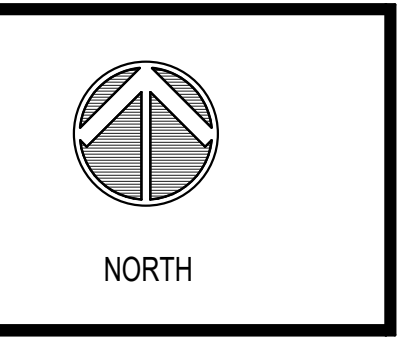
San Francisco  
Philadelphia  
Austin  
New York  
Los Angeles  
Chicago

PROFESSIONAL SEAL

LOCATION:  
WAUKEE, IOWA  
1005 HICKMAN RD. 50263

HY-VEE, INC.  
5820 WESTOWN PARKWAY  
WEST DES MOINES, IOWA 50386  
TEL: (515) 267-2800  
FAX: (515) 267-2838

**HyVee**  
EMPLOYEE OWNED

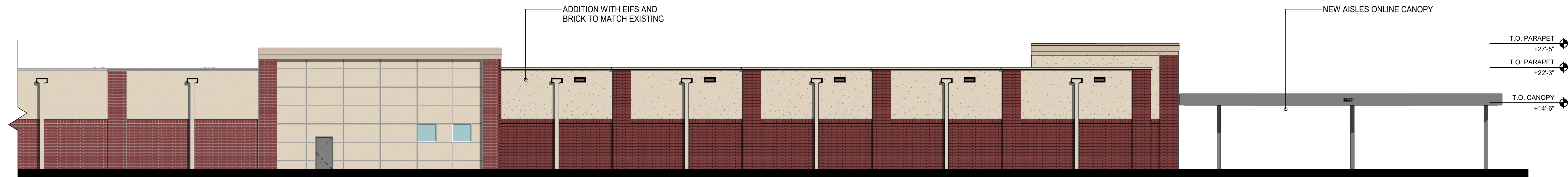


PLANNING  
SUBMITTAL-  
EXTERIOR  
ELEVATIONS A

PROJECT MANAGER SL	CHECKED BY Approver
DRAWN BY: Author	DATE: FEBRUARY 2022
SCALE: 3/32" = 1'-0"	JOB NUMBER: 63000988

SHEET:  
**P1**

REVISION	DATE BY



1 NORTH ELEVATION A  
SCALE: 3/32" = 1'-0"



2 NORTH ELEVATION B  
SCALE: 3/32" = 1'-0"



3 WEST ELEVATION  
SCALE: 3/32" = 1'-0"

**brr**

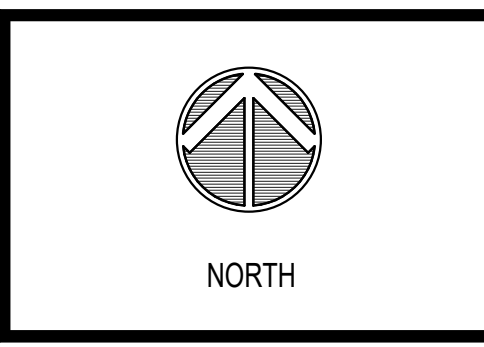
Architect of Record: Trevor Tyson Holcomb  
BRR Architecture, Inc.

Kansas City: 8121 Metcalf Ave  
 Suite 200  
 Overland Park, KS 66204  
 Phone: 913-262-9095  
 Fax: 913-262-9044  
 San Francisco: 1010 Market St  
 Suite 200  
 San Francisco, CA 94102  
 Phone: 415-774-2000  
 Fax: 415-774-2001  
 Austin: 1100 E. 17th St  
 Suite 200  
 Austin, TX 78741  
 Phone: 512-452-2000  
 Fax: 512-452-2001

PROFESSIONAL SEAL

LOCATION:  
**WAUKEE, IOWA**  
**1005 HICKMAN RD. 50263**

HY-VEE, INC.  
 5820 WESTOWN PARKWAY  
 WEST DES MOINES, IOWA 50266  
 TEL: (515) 281-2800  
 FAX: (515) 281-2838  
**HyVee**  
 EMPLOYEE OWNED



PLANNING  
 SUBMITTAL-  
 EXTERIOR  
 ELEVATION B

PROJECT MANAGER SL	CHECKED BY Approver
DRAWN BY Author	DATE FEBRUARY 2022
SCALE 3/32" = 1'-0"	JOB NUMBER 63000988

SHEET  
**P2**