

EXTERIOR MATERIAL SELECTIONS

NOTE:
THESE SELECTIONS ARE PROVIDED TO SHOW "COLOR INTENT".
FINAL SELECTIONS CAN/ OR WILL BE MADE BY THE OWNER AS THIS PROJECT PROGRESSES.

ROOFING: TPO
ANY MANUFACTURER
- WHITE

SIDING: NICHHA - COLOR #1
ARCHITECTURAL BLOCK
- ILLUMINATION SERIES
- STACKED PATTERN
- COLOR: RAVEN (BLACK)
- VISIBLE FLASHINGS

SIDING: NICHHA - COLOR #2
ARCHITECTURAL BLOCK
- ILLUMINATION SERIES
- STACKED PATTERN
- COLOR: COTTON (WHITE)
- VISIBLE FLASHINGS

WOOD-LOOK PANELS
- FIBERON COMPOSITE CLADDING
- COLOR: T.B.D. (WALNUT)
- INCLUDES:
- VISIBLE FLASHINGS

PORCELAIN PANEL FACADE
DAL TILE
- PANORAMIC PORCELAIN
- HIDDEN FIXATION INSTALL
- SIZE: LARGE FORMAT
- COLOR: STATUARIO

CULTURED STONE VENEER
CENTURION STONE
- LEDGE STONE
- COLOR: MOUNT RUNDLE
- TYPE: RANDRE

CURTAIN WALL ENVELOPE
OLDCASTLE BLDG. ENVELOPE
- COLOR: ANODIZED BLACK
- TYPE: RELIANCE
- 2.1/2" WIDE PROFILE

STOREFRONT ENVELOPE
KAWNEER or SIMILAR
- COLOR: ANODIZED BLACK
- PROFILE: 2"x4"

GLAZING/ DOOR TRIM & FLASHING
FIRESTONE OR EQUAL
- COLOR: KYNAR MATTE BLACK
- TYPE: UNA-CLAD METAL
- 24 GAUGE MIN.

THIS PLAN IS THE PROPERTY OF DOWNING CONSTRUCTION INC.

ANY USE WITHOUT WRITTEN PERMISSION IS STRICTLY PROHIBITED!

STUDIO
ARCHITECTURE & INTERIORS
509 East Scenic Valley Ave.
Indianola, Iowa 50125
p: 515.961.5386
f: 515.961.0468
www.downingconstruct.com
www.downinginterior.com

Access Systems - New Building
Street Address
Anytown, Iowa ZIP

DELIVER

COMMIT

DEVELOP

DISCOVER/ ANALYZE

DRAWN BY: Precon. Team

ORIGINAL
CONSTRUCTION DOCUMENT
08/31/2021

REVISIONS

02/25/2022 - Updated DD Set
02/26/2022 - V.E. Option
03/03/2022 - DD Revisions

PLAN NO. = 90-111

DWG. LIST

COLOR EXTERIOR
ELEVATIONS

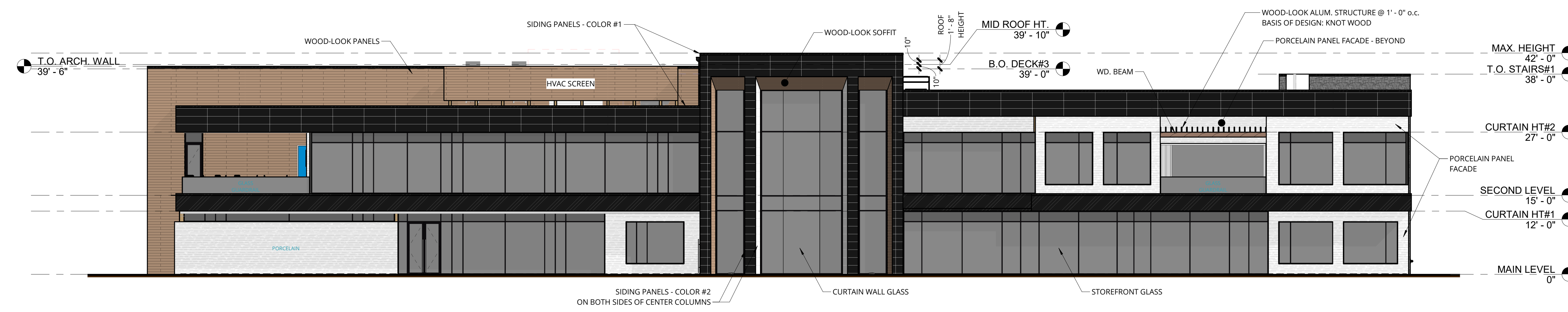
SHEET NO.

A-202



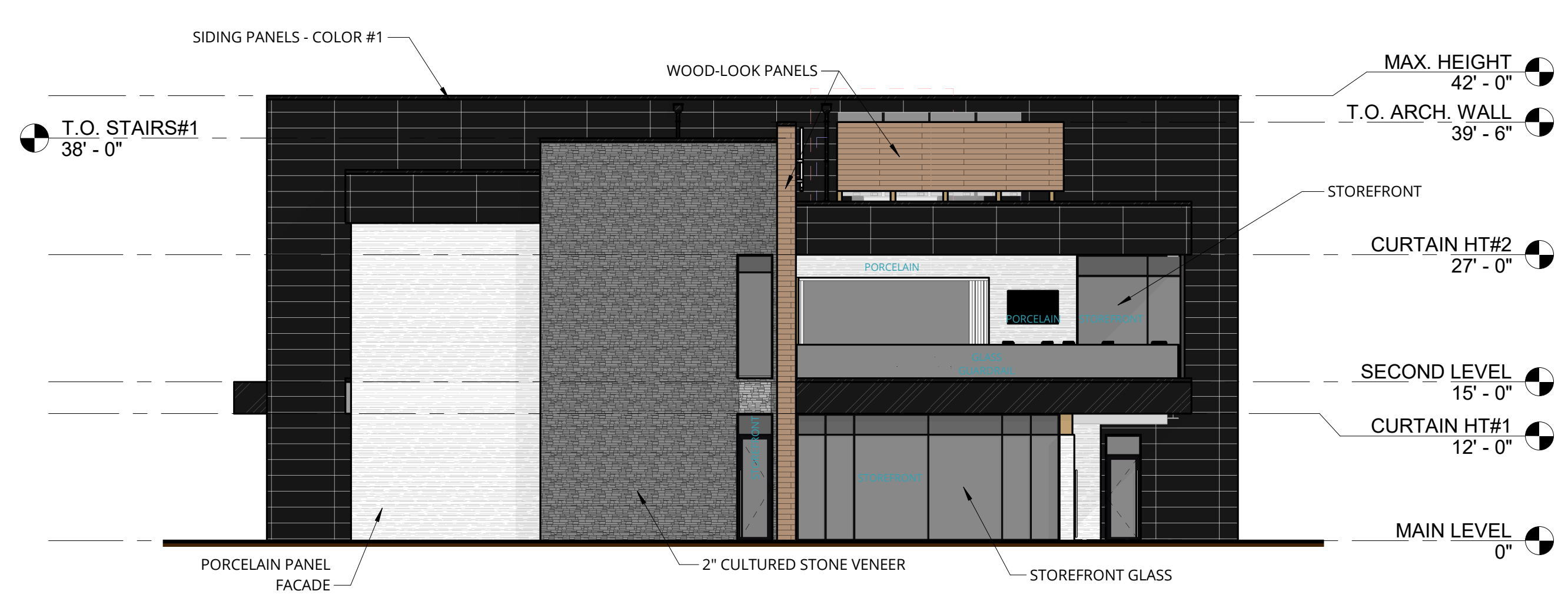
1 COLOR - EAST (FRONT) ELEVATION

SCALE: 3/32" = 1'-0"



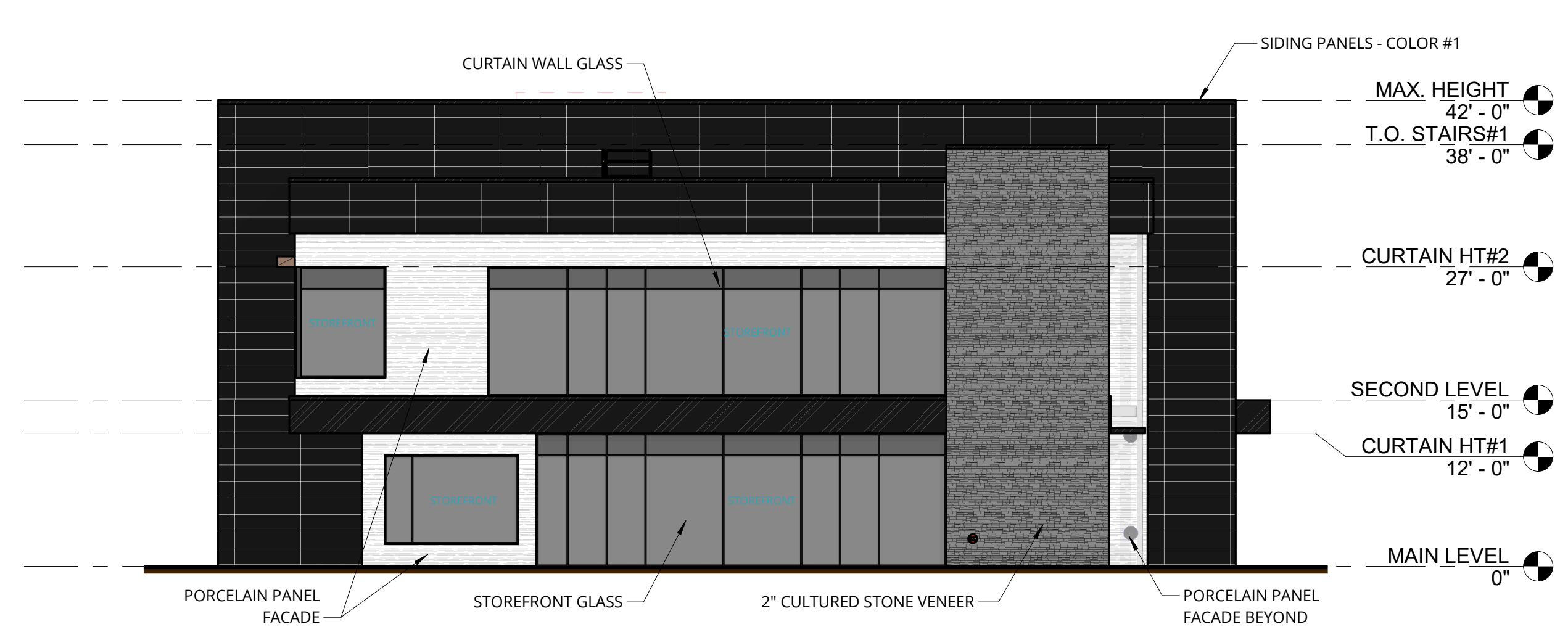
2 COLOR - WEST (REAR) ELEVATION

SCALE: 3/32" = 1'-0"



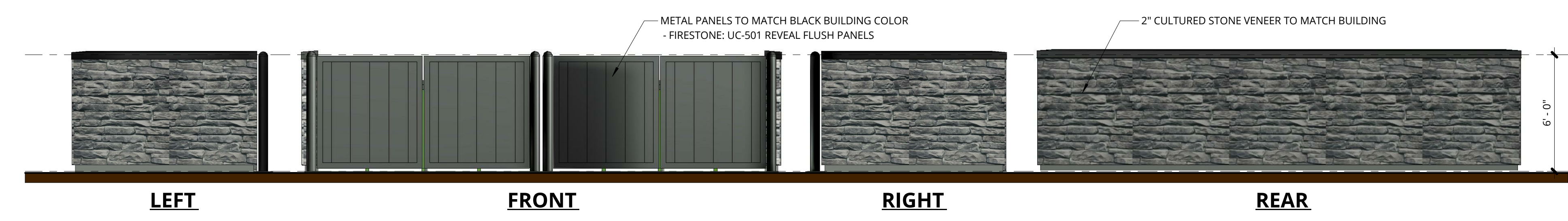
3 COLOR - NORTH ELEVATION

SCALE: 3/32" = 1'-0"



4 COLOR - SOUTH ELEVATION

SCALE: 3/32" = 1'-0"



5 TRASH ENCLOSURE ELEVATIONS

SCALE: 1/4" = 1'-0"

BUILDING DESIGN STANDARDS:

ALICES ROAD FACADE: (EAST)	CALCULATION %
60% OF GLASS, STONE, OR SIMILAR =	69 %
40% REMAINING FLAT METAL PANELS = (or SIMILAR)	31 %
OTHER RIGHT OF WAY FACADES: (SOUTH)	CALCULATION %
45% OF GLASS, STONE, OR SIMILAR =	56 %
55% REMAINING FLAT METAL PANELS = (or SIMILAR)	44 %
NOT RIGHT OF WAY FACADES: (WEST)	CALCULATION %
ANY COMBINATION OF GLASS, STONE, FLAT METAL PANELS, OR SIMILAR	
GLASS, STONE, OR SIMILAR =	62 %
REMAINING FLAT METAL PANELS =	38 %
NOT RIGHT OF WAY FACADES: (NORTH)	CALCULATION %
ANY COMBINATION OF GLASS, STONE, FLAT METAL PANELS, OR SIMILAR	
GLASS, STONE, OR SIMILAR =	56 %
REMAINING FLAT METAL PANELS =	44 %