

SOUTH FACADE MATERIALS

STONE	615± S.F (7.8%)
BRICK	2974± S.F (37.7%)
LAP SIDING	1372± S.F (17.4%)
FENESTRATION	2925± S.F (37.1%)*
TOTAL	7886 ± S.F



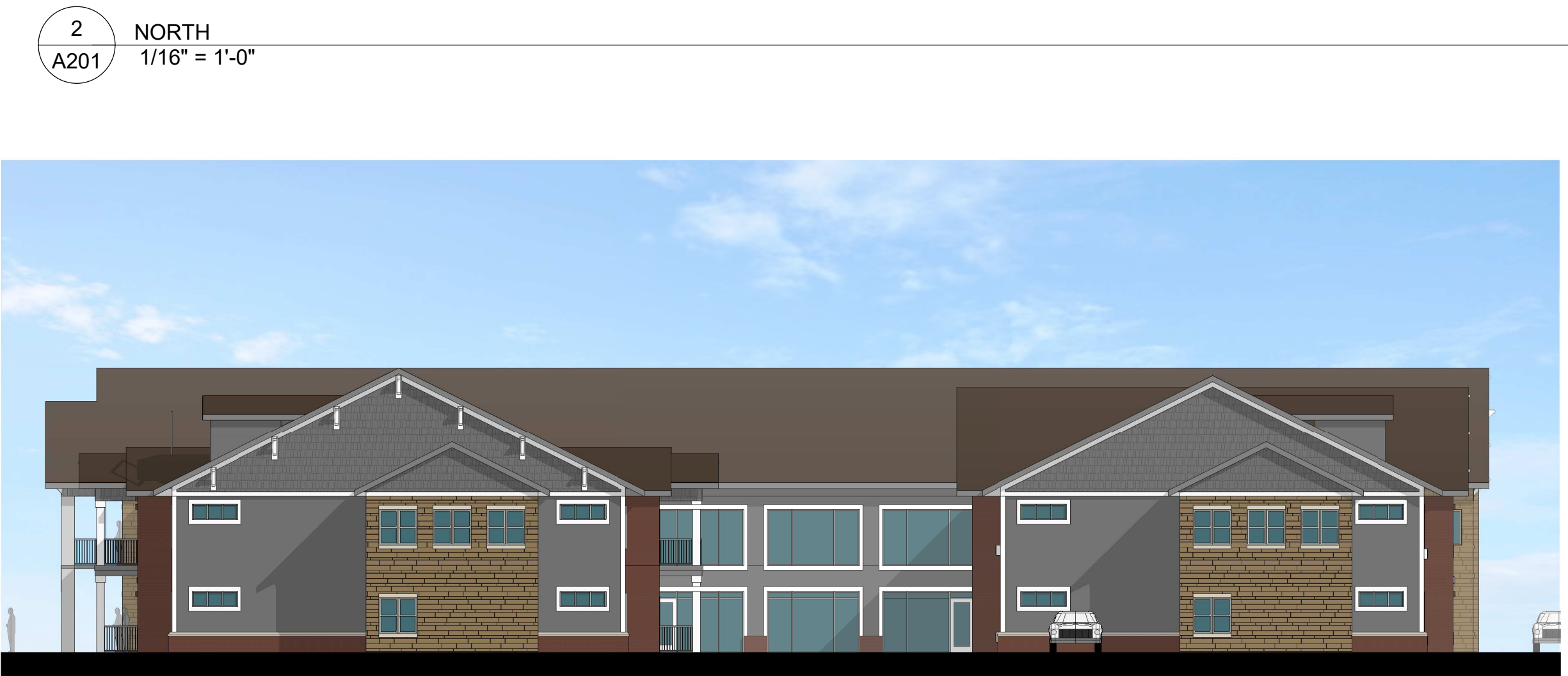
NORTH FACADE MATERIALS

STONE	870± S.F (11.5%)
BRICK	1782± S.F (23.7%)
LAP SIDING	2504± S.F (33.2%)
FENESTRATION	2380± S.F (31.6%)
TOTAL	7536± S.F



EAST FACADE MATERIALS

STONE	676± S.F (21.1%)
BRICK	190± S.F (6%)
LAP SIDING	1390± S.F (42.5%)
FENESTRATION	971± S.F (30.4%)*
TOTAL	3192± S.F



WEST FACADE MATERIALS

STONE	676± S.F (21.1%)
BRICK	190± S.F (6%)
LAP SIDING	1390± S.F (42.5%)
FENESTRATION	971± S.F (30.4%)*
TOTAL	3192± S.F



* REQUIRED 30% FENESTRATION

1 SOUTH
A201 1/16" = 1'-0"

2 NORTH
A201 1/16" = 1'-0"

3 EAST
A201 1/16" = 1'-0"

4 WEST
A201 1/16" = 1'-0"

Edencrest Kettlestone

Elevations



03.11.22