

Berkey Home Builders, Inc.  
 PO Box 7, Altoona, IA 50009  
 Home Office (515) 967-3136  
 www.berkeyhomebuilders.com

Plat Lot  
 Address  
 Waukee, IA  
 Cover Sheet

Revision Date	Revision Description	Issued by
2-7-2022	Preliminary Set	

This floor plan is for informational purposes only. The details including but not limited to sizes and options are subject to change and should be independently verified by the buyer with the builder.

**A000**

Door Schedule

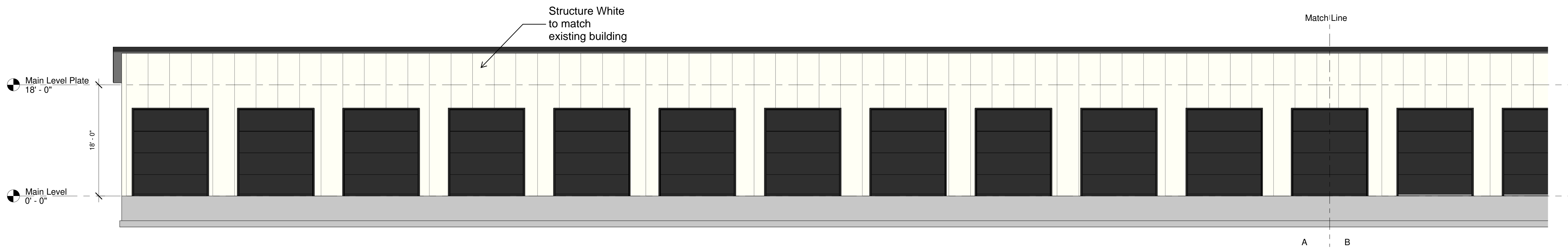
Model	Description	Rough Width	Rough Height	Width	Height	Level	Count
						Main Level	9
G12	12' x 14' Garage Doors	12' - 0"	14' - 0"	12' - 0"	14' - 0"	Main Level	17

Grand total: 26

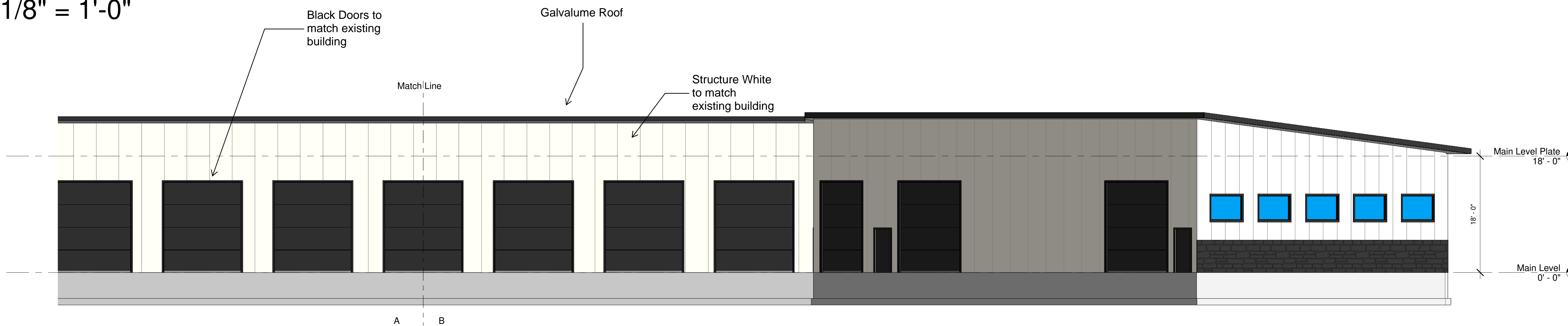
Sheet Number Sheet Name

A000	Cover Sheet
A102	Main Level Floor Plan
A200	Front Elevations
A201	Side Elevations
E100	Electrical Plan





1 Front Elevation A  
1/8" = 1'-0"



2 Front Elevation B  
1/8" = 1'-0"



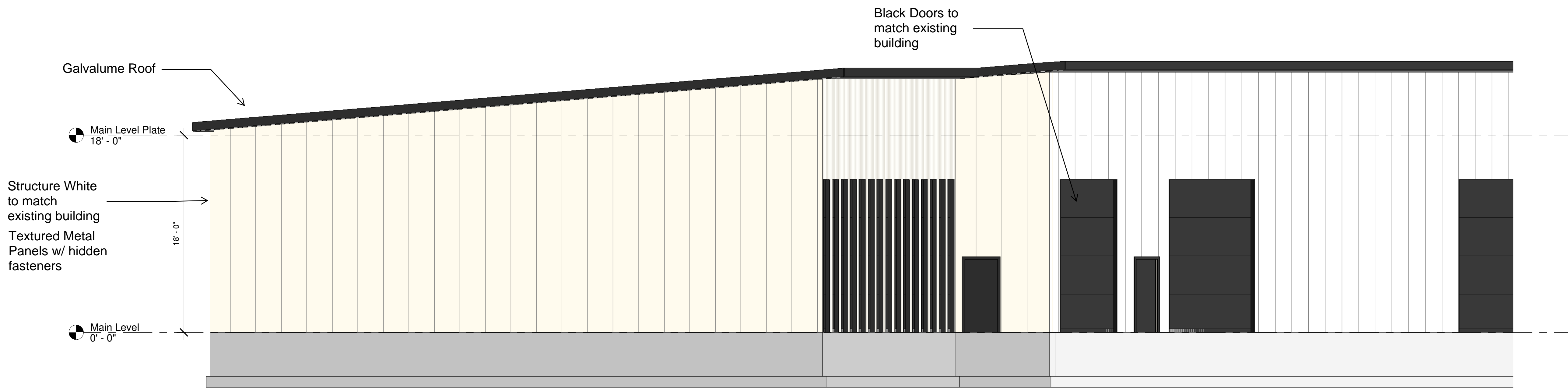
Berkey Home Builders, Inc.  
PO Box 7, Altoona, IA 50009  
Home Office (515) 967-3136  
www.berkeyhomebuilders.com

Plat Lot  
Address  
Waukee, IA  
Front Elevations

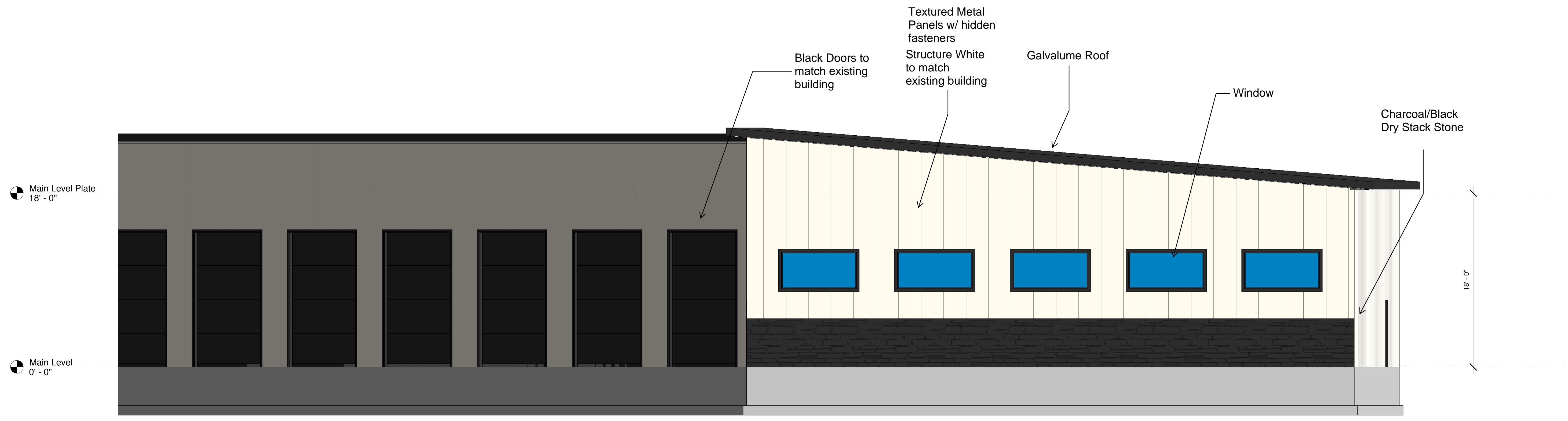
Revision Date	Revision Description	Issued by
2-7-2022	Preliminary Set	

This floor plan is for informational purposes only. The details including but not limited to sizes and options are subject to change and should be independently verified by the buyer with the builder.

A200



5 Left Elevation  
3/16" = 1'-0"



2 Right Elevation  
3/16" = 1'-0"



Berkey Home Builders, Inc.  
PO Box 7, Altoona, IA 50009  
Home Office (515) 967-3136  
www.berkeyhomebuilders.com

Plat Lot  
Address  
Waukee, IA  
Side Elevations

Revision Date	Revision Description	Issued by
2-7-2022	Preliminary Set	

This floor plan is for informational purposes only. The details including but not limited to sizes and options are subject to change and should be independently verified by the buyer with the builder.

A201

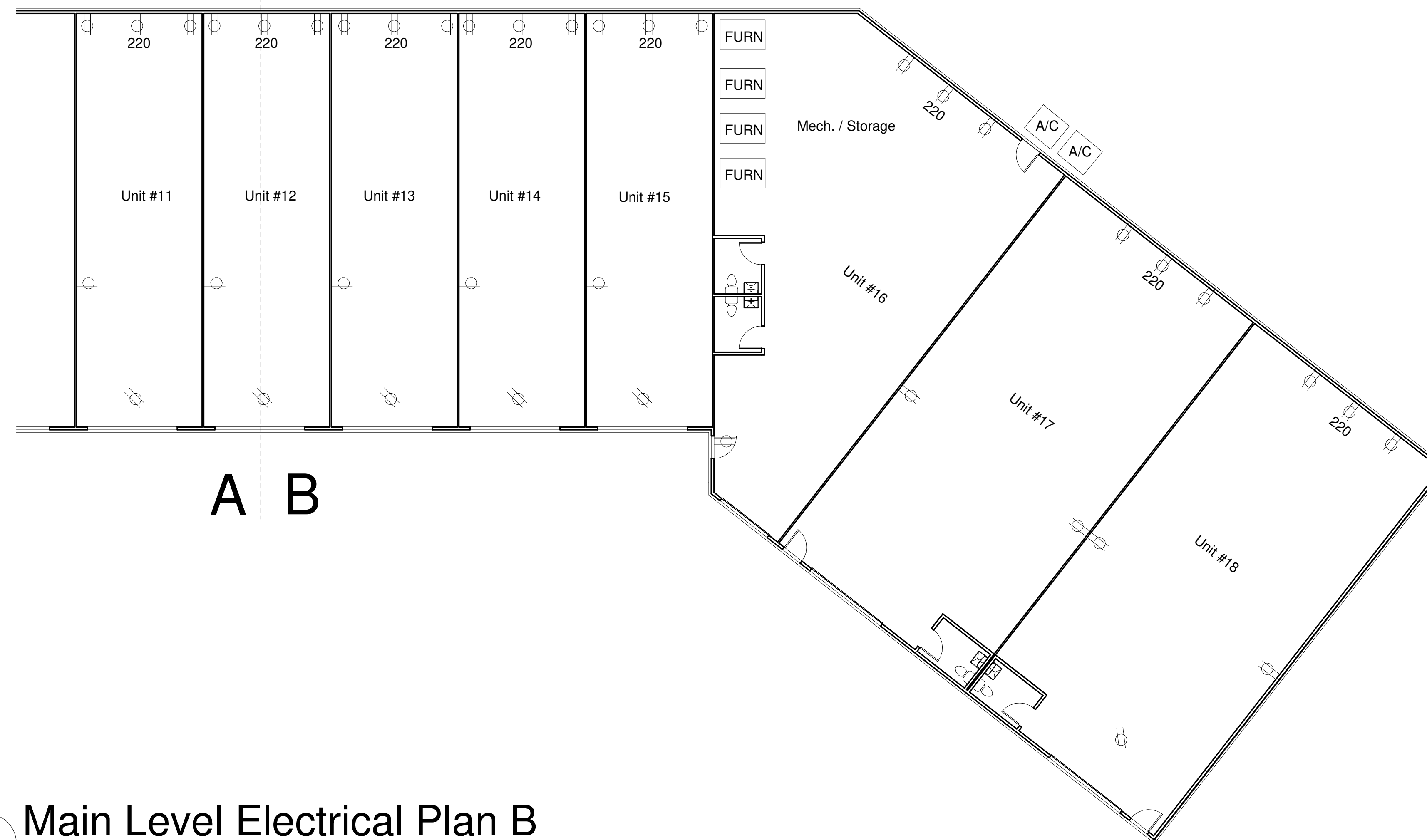
Match Line



A B

1 Main Level Electrical Plan A  
3/32" = 1'-0"

Match Line



A B

2 Main Level Electrical Plan B  
3/32" = 1'-0"



Berkley Home Builders, Inc.  
PO Box 7, Altoona, IA 50009  
Home Office (515) 967-3136  
www.berkleyhomebuilders.com

Plat Lot  
Address  
Waukee, IA  
Electrical Plan

Revision Date	Revision Description	Issued by
2-7-2022	Preliminary Set	

This floor plan is for informational purposes only. The details including but not limited to sizes and options are subject to change and should be independently verified by the buyer with the builder.

**E100**