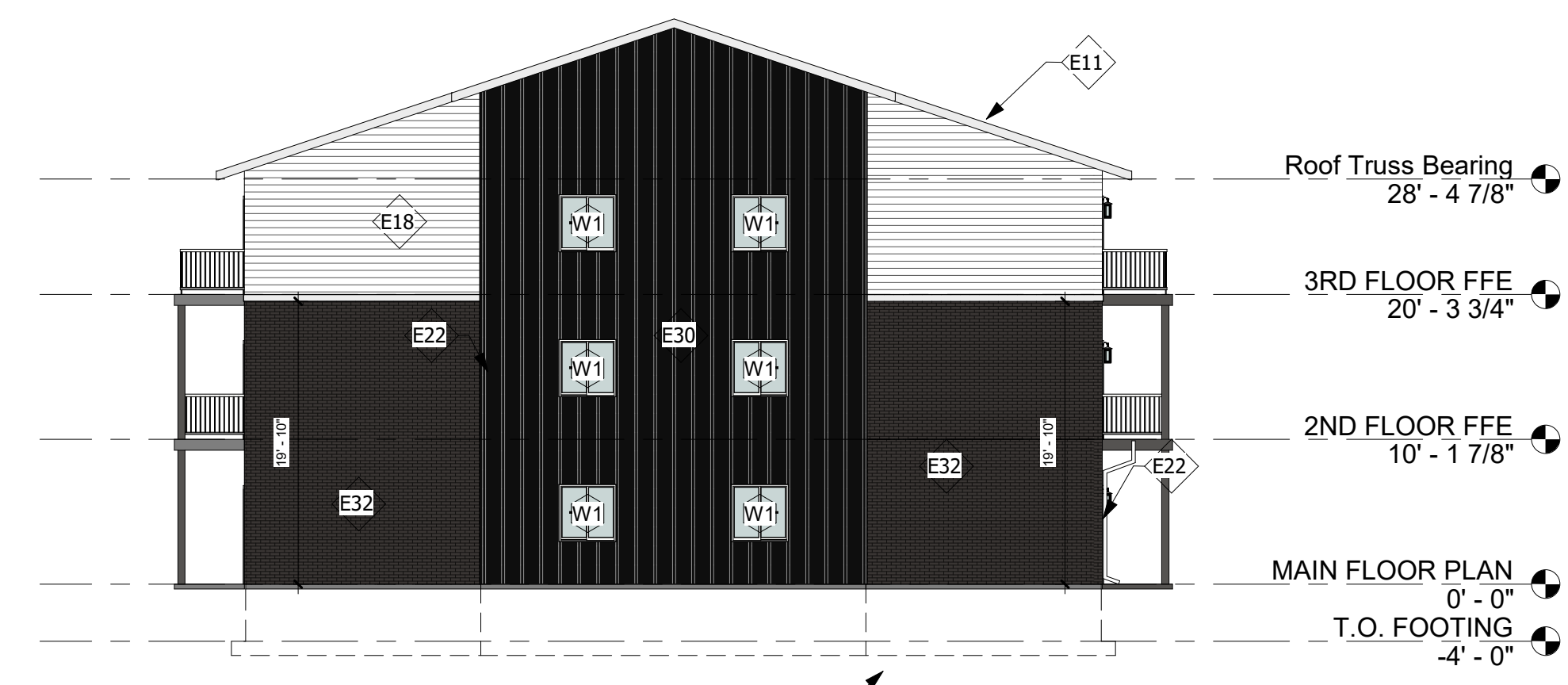




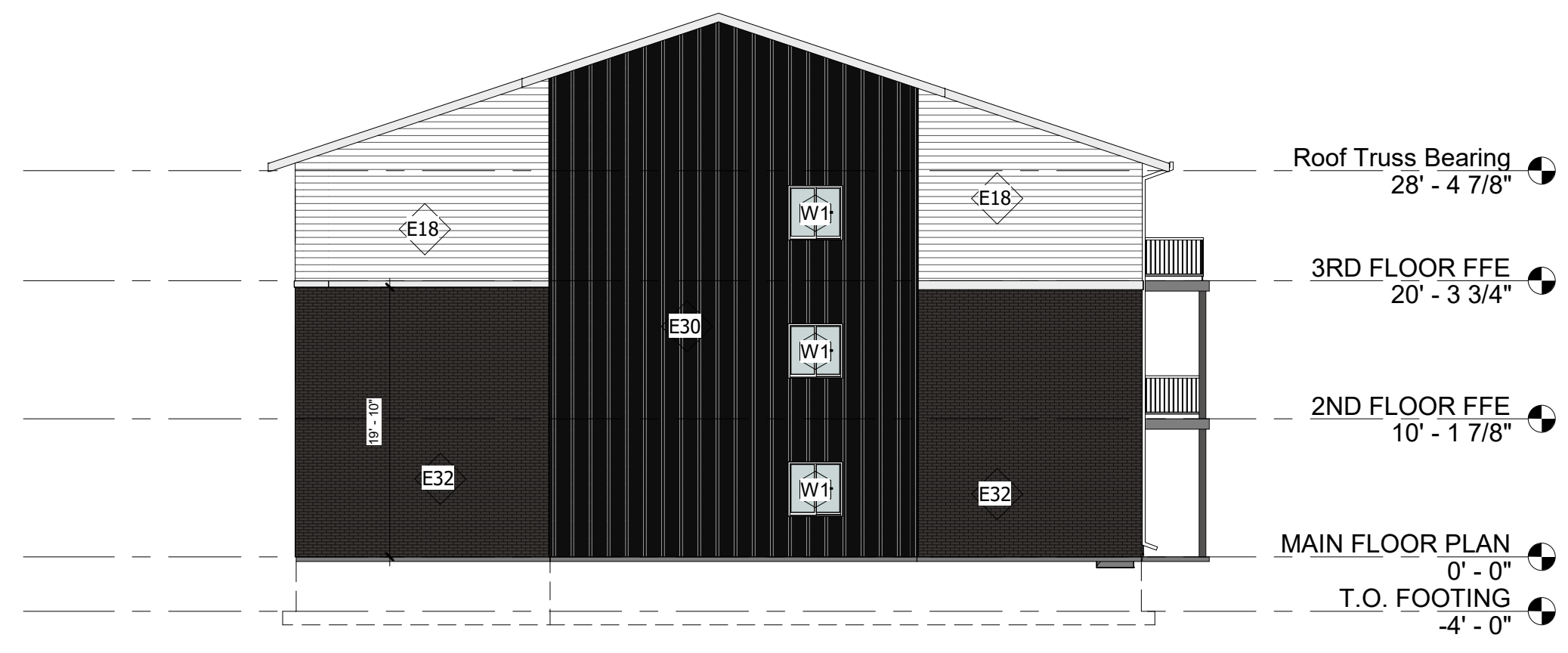
1 Front Elevation
1/8" = 1'-0"



2 Back Elevation
1/8" = 1'-0"

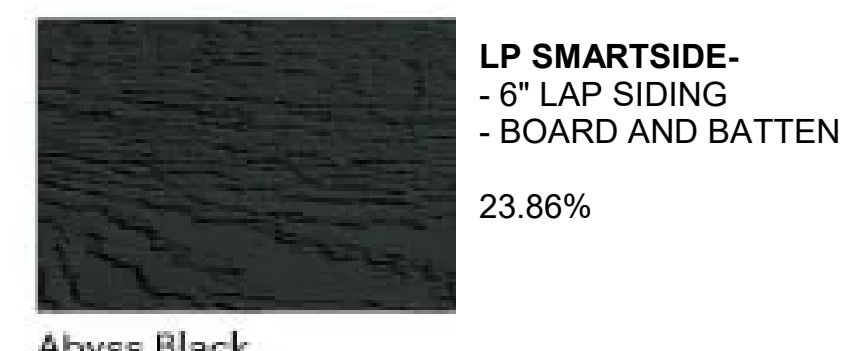


3 Left Elevation
3/32" = 1'-0"



4 Right Elevation
3/32" = 1'-0"

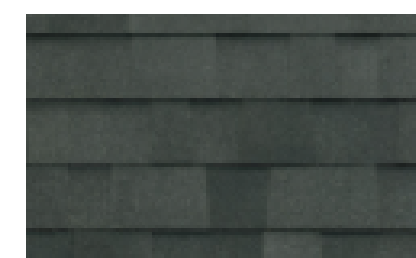
EXTERIOR MATERIALS PALETTE-



LP SMARTSIDE-
- 6" LAP SIDING
- BOARD AND BATTEN
23.86%



LP SMARTSIDE-
- 6" LAP SIDING
- BOARD AND BATTEN
36.44%



MALARKEY SHINGLES-
- Vista AR



VERSETTA STONE-
- LEDGESTONE STYLE STONE SIDING
38.12%

Northern Ash

KEYNOTES

E1	Roof system consists of: 30 year laminated fiberglass shingles, #15 asphalt felt underlayment (self adhered ice & water shield rubberized membrane 60" up from eave & 30" ea. side of all valleys), plywood roof sheathing (see struct.) w/ edge clips, & roof trusses @ 24" o.c. (verify w/ struct. & roof truss mfr.)
E11	8" prefinished cement board fascia trim. Color-White
E12	8" prefinished cement board trim. Color-White
E14	Poured concrete footing. See structural.
E18	Prefinished LP Smartside Siding, Lap Siding. Color: SNOWSCAPE WHITE.
E21	Prefinished aluminum gutter.
E22	Prefinished aluminum downspout. Add drain tile for gutter.
E26	42" tall railing. Top and bottom rail to be wood, balusters to be metal. Typical.
E30	Prefinished LP Smartside Siding, board and batten. Color: ABYSS BLACK.
E32	Versetta Stone Northern Ash Ledge Stone.



ARCHITECT

Project Architect: Laura Devine
Email: laura.devine@lloydgroup.com

CONSULTANTS

CIVIL
EA
CIVIL DESIGN ADVANTAGE
4121 NW Urbandale Drive
Urbandale IA 50322
515.369.4429
Project Manager: Eryn Orlowski
ErynO@cdad.com

MEP
WPE
WEST PLAINS ENGINEERING, INC.
4609 S Technik Cir
Sioux Falls, SD 57108
605.362.3763
Electrical Project Manager: Harken Osterloh
harken.osterloh@westplainsengineering.com
Mechanical Engineer: Connor Swontak, P.E.
connor.swontak@westplainsengineering.com

STRUCTURAL
RE RAKER RHODES
Engineering
534 N Main Ave, Suite
201 Sioux Falls, SD 57104
605.305.4035
Project Manager: Jerad Hoffman
jrhoffman@rakerhodes.com

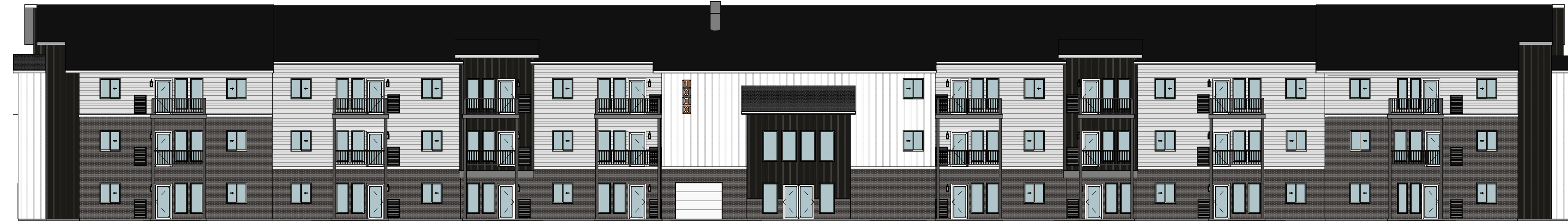
No.	Description	Date
1	Addendum 1	2.4.2022
2	Revision 2	2.17.2022

THE PITCH

BLDG 1(36) Exterior Elevations

Project No: 21051
Date: 12.10.2021
Drawn by: RJF
Checked by: LED

A3.11



① Front Elevation- 52 Unit
1/16" = 1'-0"

FOR REFERENCE ONLY



② Back Elevation- 52 Unit
1/16" = 1'-0"

FOR REFERENCE ONLY

EXTERIOR MATERIALS PALETTE-



Snowscape White

LP SMARTSIDE-
- 6" LAP SIDING = 38.08%
- BOARD AND BATTEN = 8.57%



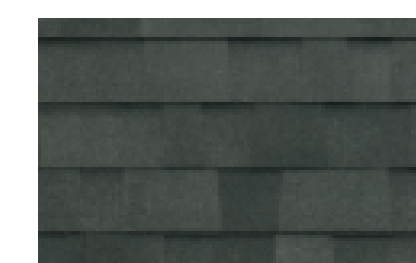
Abyss Black

LP SMARTSIDE-
- 6" LAP SIDING
- BOARD AND BATTEN
17.40%



Northern Ash

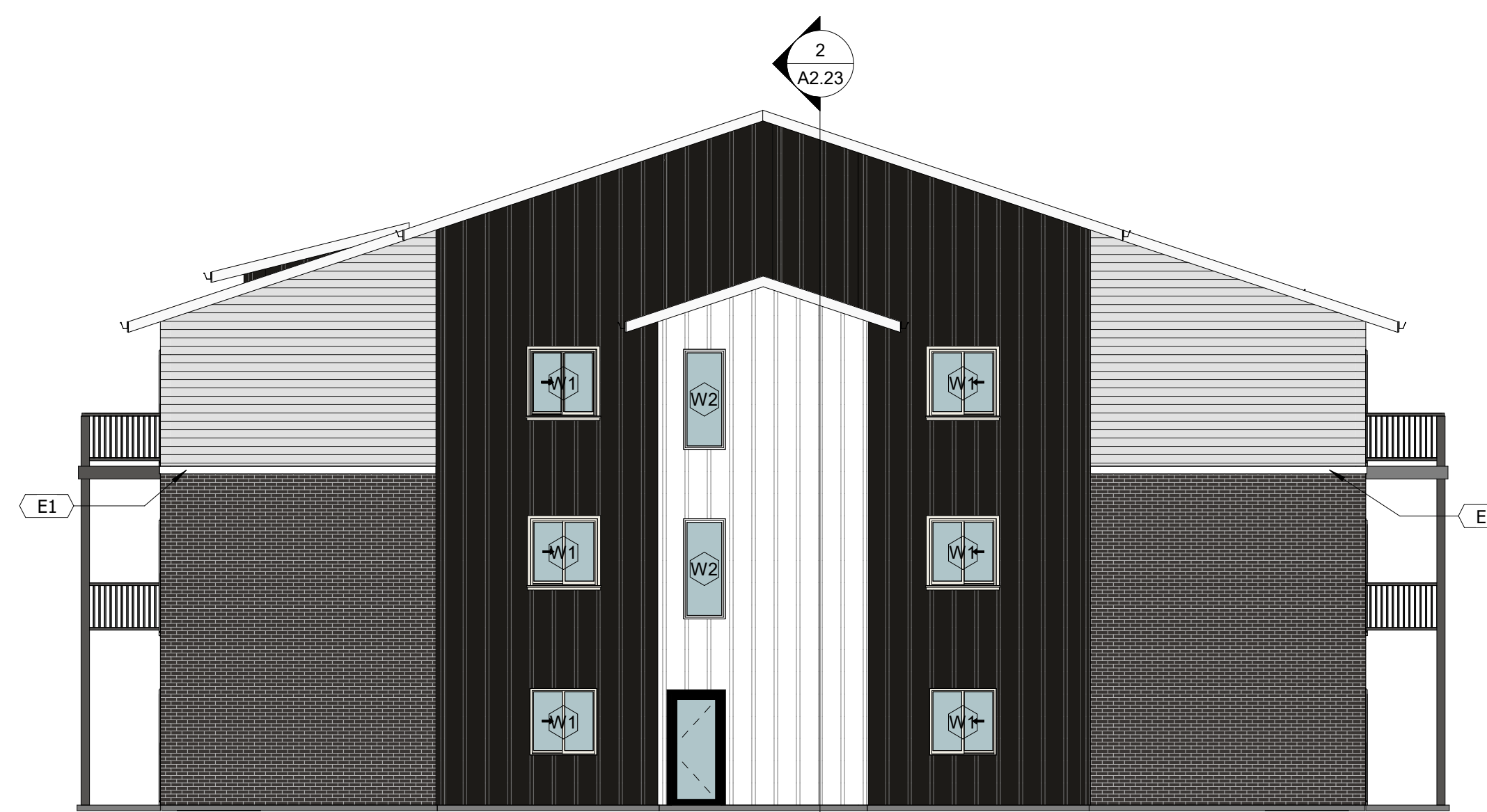
VERETTA STONE-
- LEDGESTONE STYLE SIDING
35.31%



Midnight Black

MALARKEY SHINGLES-
- Vista AR

TOTAL PERCENTAGE OF BRICK ON ALL BUILDINGS: 35.33%



③ Side Elevation 1 - 52 Unit
1/8" = 1'-0"

FOR REFERENCE ONLY



④ Side Elevation 2 - 52 Unit
1/8" = 1'-0"

FOR REFERENCE ONLY

ARCHITECT

Project Architect: Laura Devine
Email: laura.devine@lloydcompanies.com

CONSULTANTS

CIVIL
3800 W 53rd St
Sioux Falls, SD 57106



Project Manager: Aaron Norman
aaron@normanengineering.com

MEP
4609 S Technik Cir
Sioux Falls SD, 57106
(605)362-3753



Electrical Project Manager: Harken Osterloo
harken.osterloo@westplainsengineering.com
Mechanical Engineer: Connor Swontek, P.E.
connor.swontek@westplainsengineering.com

STRUCTURAL
609 S. Lyncrest Place
Suite 110
Sioux Falls SD, 57106
(605)743-0510



Project Manager: Justin Christensen
jchristensen@riseincorp.com

No.	Description	Date

THE PITCH
PHASE 2

BLDG 4 (52 CL)
Exterior Elevations

Project No. 22---

Date: 02.15.2022

Drawn by: MLM

Checked by: LED

A3.20



KEYNOTES	
E1	Prefinished cement board, 1x6 Trim. LP SMARTSIDE. Color: Snowscape White.
E3	Prefinished cement board, 8" lap siding. LP SMARTSIDE. Color: Snowscape White.
E4	Prefinished cement board, board and batten. LP SMARTSIDE. Color: Abyss Black.
E5	Prefinished cement board, board and batten. LP SMARTSIDE. Color: Snowscape White.
E6	Roof system consists of: Class III Impact-Resistant 30-year laminated fiberglass shingles, #15 asphalt felt underlayment (self-adhered ice & water shield rubberized membrane 60" up from eave & 30" ea. side of all valleys), plywood roof sheathing (see struct.) w/ edge clips, & roof trusses @ 24" o.c. (verify w/ struct. & roof truss mfr.)
E9	Prefinished aluminum gutter. Color: White.
E11	Versetta Stone Mortarless screw-applied stone. Color: Northern Ash Style: Ledgestone.
E18	18" tall metal building signage on 3" standoffs. Backlight. Finish: Weathered metal. Color: Copper/Rust. See Detail 8/A1.02.
E22	Prefinished aluminum overhead door. Provide opener & light.

1 Front Elevation- 48 Unit Side A
1/8" = 1'-0"



2 Front Elevation- 48 Unit Side B
1/8" = 1'-0"

ARCHITECT
Project Architect: Laura Devine
Email: laura.devine@lloydgroup.com

CONSULTANTS

CIVIL
3405 SE Crossroads Drive, Suite G
Grimes, IA 50111
515.369.4429
Project Manager: Eryn Orlowski
ErynO@cdave.com

MEP
4609 S Technik Ct
Sioux Falls, SD 57106
605.362.3763
Electrical Project Manager: Harken Osterloo
harken.osterloo@westplainsengineering.com
Mechanical Engineer: Connor Swontak, P.E.
connor.swontak@westplainsengineering.com

STRUCTURAL
534 N Main Ave, Suite
201 Sioux Falls, SD 57104
605.305.4035
REAKER RHODES
Engineering
Project Manager: Jerad Hoffman
jrhoffman@rakerhodes.com

No.	Description	Date

THE PITCH
PHASE 2

BLDG 4 (52 CL)
Exterior Elevations

Project No. 22-
Date: 02.15.2022
Drawn by: ROBI
Checked by: Checker

A3.21

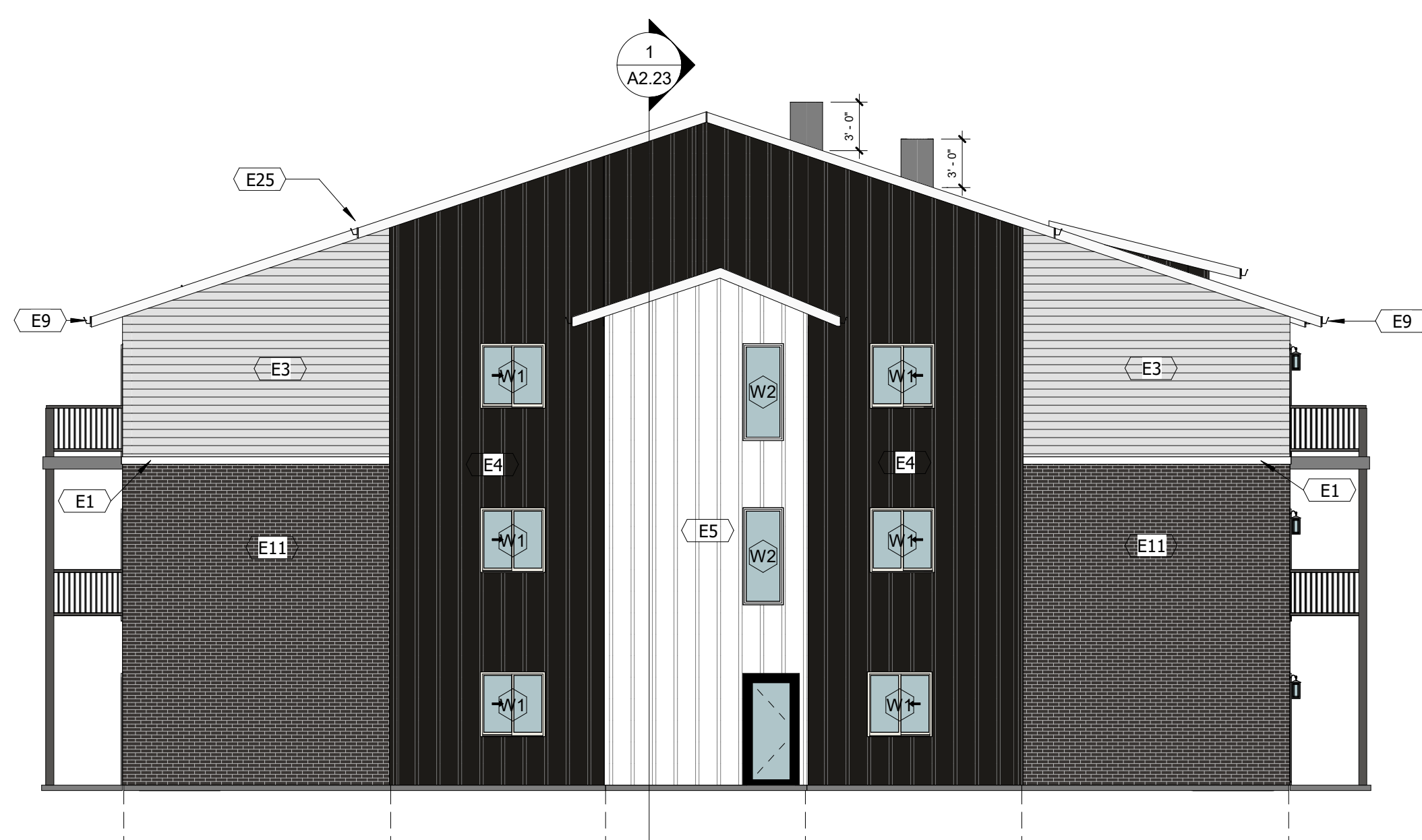
KEYNOTES	
E1	Prefinished cement board, 1x6 Trim. LP SMARTSIDE. Color: Snowscape White.
E3	Prefinished cement board, 8" lap siding. LP SMARTSIDE. Color: Snowscape White.
E4	Prefinished cement board, board and batten. LP SMARTSIDE. Color: Abyss Black.
E5	Prefinished cement board, board and batten. LP SMARTSIDE. Color: Snowscape White.
E6	Roof system consists of: Class III Impact-Resistant 30-year laminated fiberglass shingles, #15 asphalt felt underlayment (self-adhered ice & water shield rubberized membrane 60" up from eave & 30" ea. side of all valleys), plywood roof sheathing (see struct.) w/ edge clips, & roof trusses @ 24" o.c. (verify w/ struct. & roof truss mfr.).
E9	Prefinished aluminum gutter. Color: White.
E11	Versetta Stone Mortarless screw-applied stone. Color: Northern Ash Style: LedgeStone.
E25	8" prefinished fascia trim. Color White.



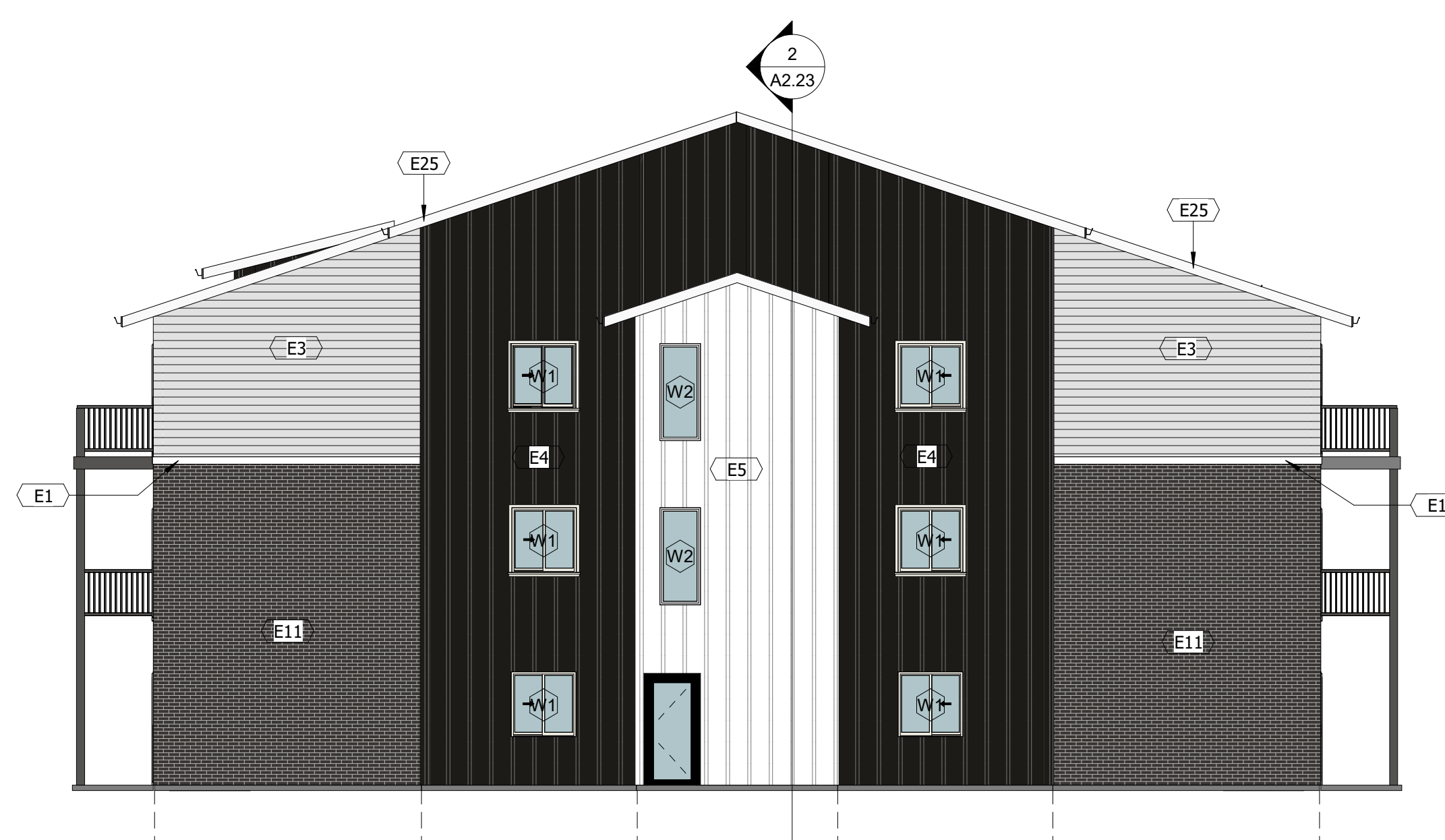
1 Back Elevation Side A
1/8" = 1'-0"



2 Back Elevation Side B
1/8" = 1'-0"



3 Side Elevation.
1/8" = 1'-0"



4 Side Elevation- 48 Unit.
1/8" = 1'-0"

**PRELIMINARY
NOT FOR
CONSTRUCTION**

ARCHITECT
Project Architect: Laura Devine
Email: laura.devine@lloydcompanies.com

CONSULTANTS

CIVIL
4121 NW Utlandale Drive
Utlandale, IA 50322
515.369.4429
EA
CIVIL DESIGN ADVANTAGE
Project Manager: Erin Glendike
Erin@cdadwg.com

MEP
4609 S. Techlink Cir
Sioux Falls, SD 57106
605.362.3793
WPE
WEST PLAN ENGINEERING, INC.
Electrical Project Manager: Harlan Osterloo
harlan.osterloo@westplansengineering.com
Mechanical Engineer: Connor Swiontek, P.E.
connor.swiontek@westplansengineering.com

STRUCTURAL
524 N Main Ave, Suite
201 Sioux Falls, SD 57104
605.305.4035
RE RAKER RHODES
Engineering
Project Manager: Jerad Hoffman
JHoffman@rakerrhodes.com

No.	Description	Date

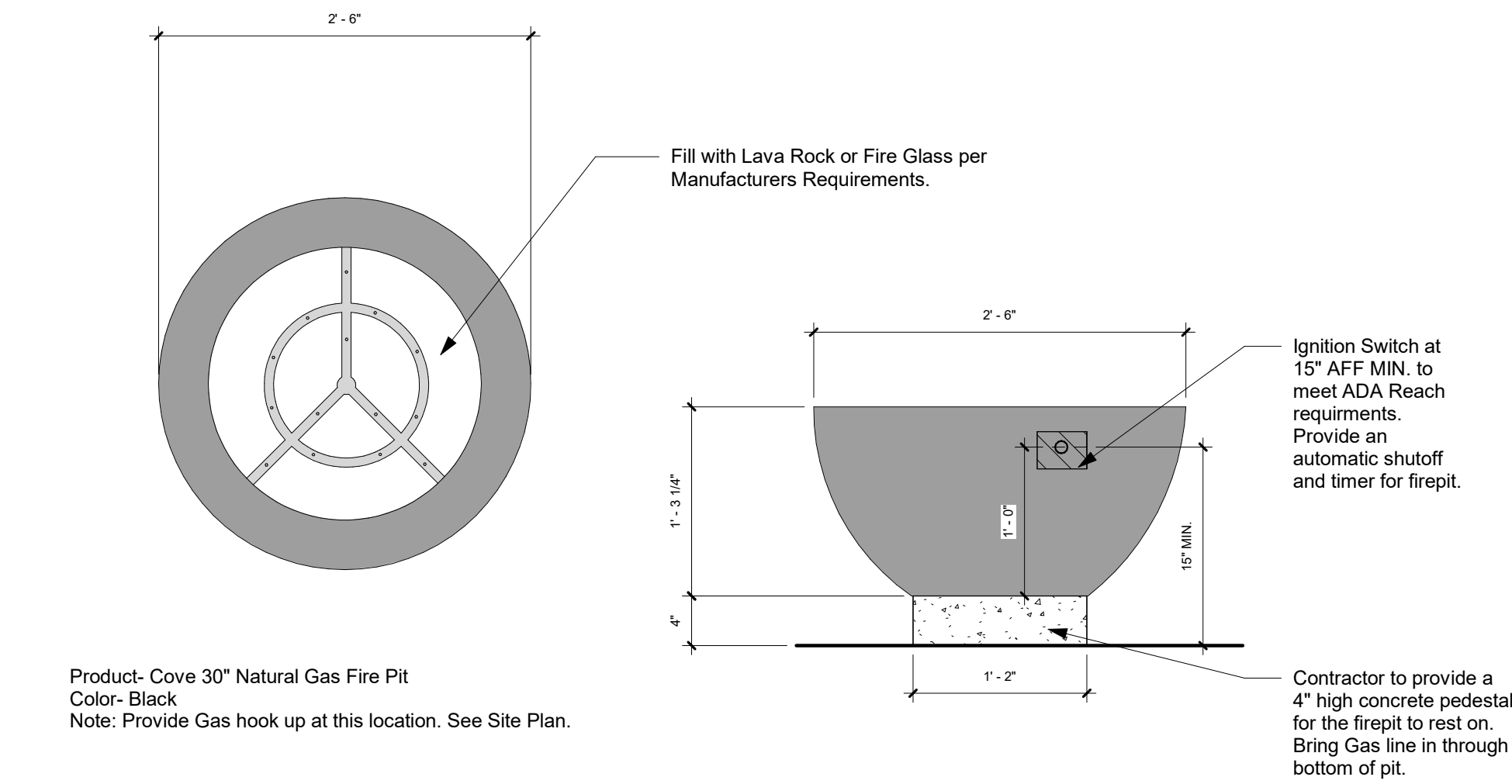
**THE PITCH
PHASE 2**

BLDG 4 (52 CL) Exterior Elevations

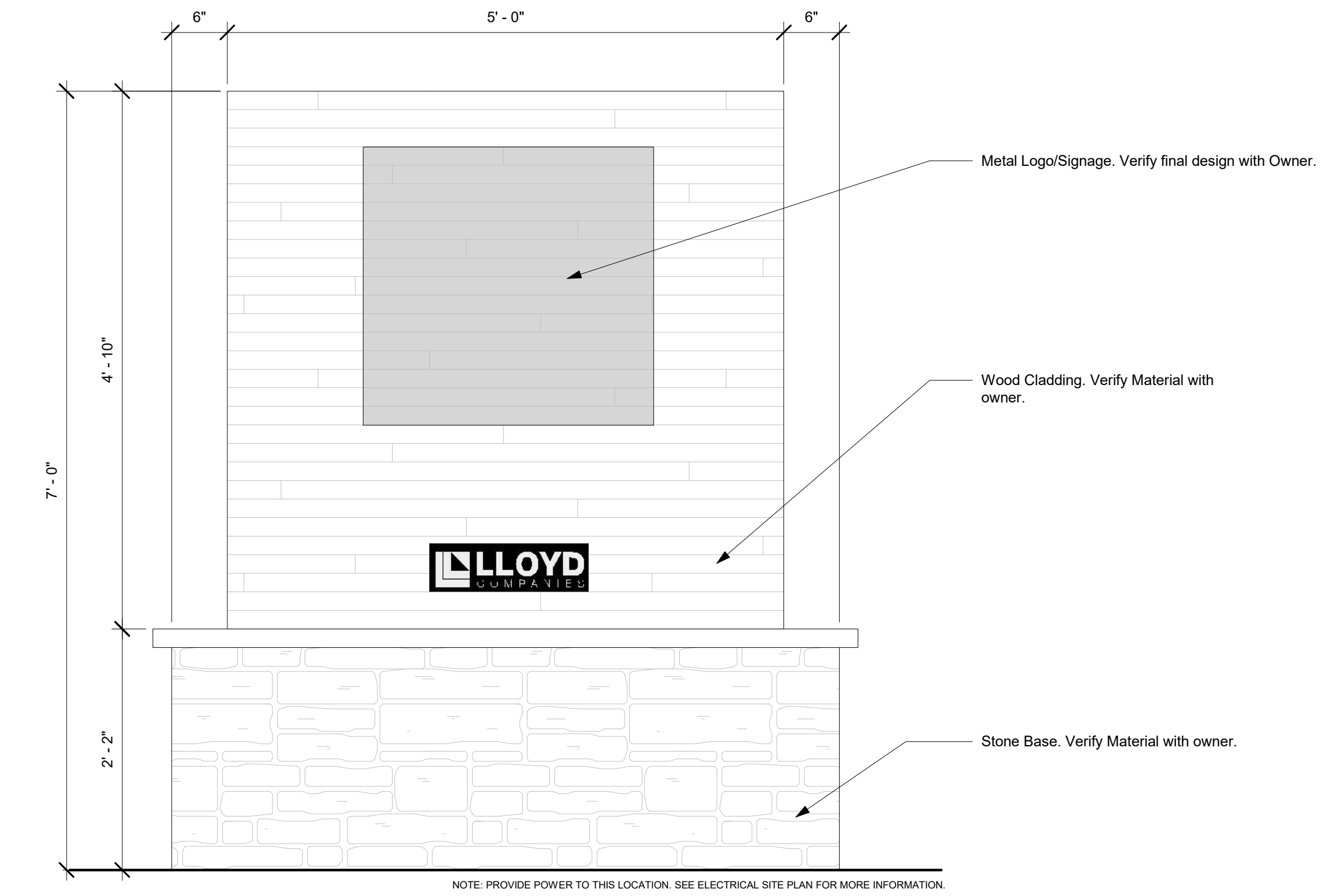
Project No. 22---
02.15.2022

Drawn by: ROBI
Checked by: Checker

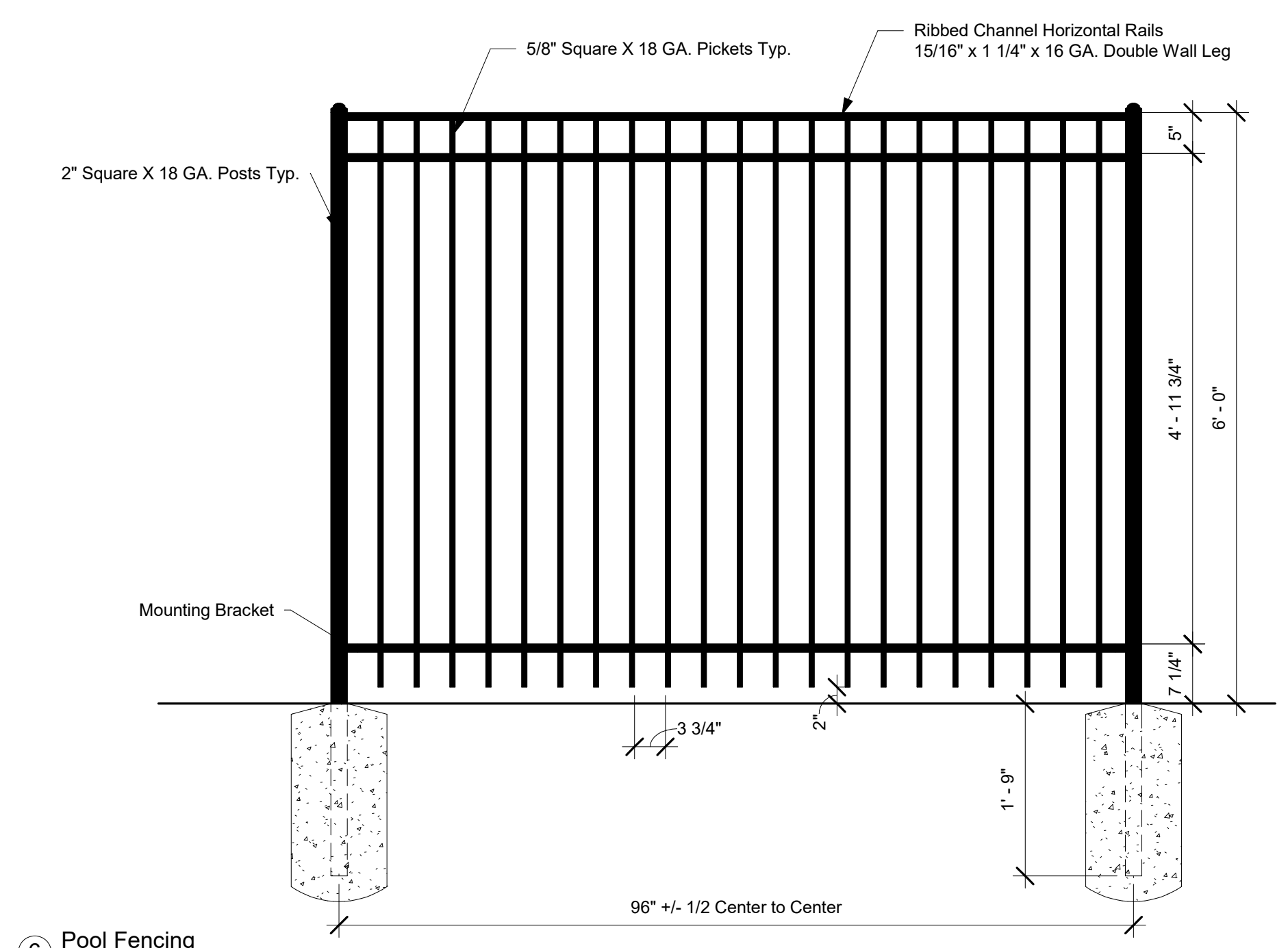
A3.22



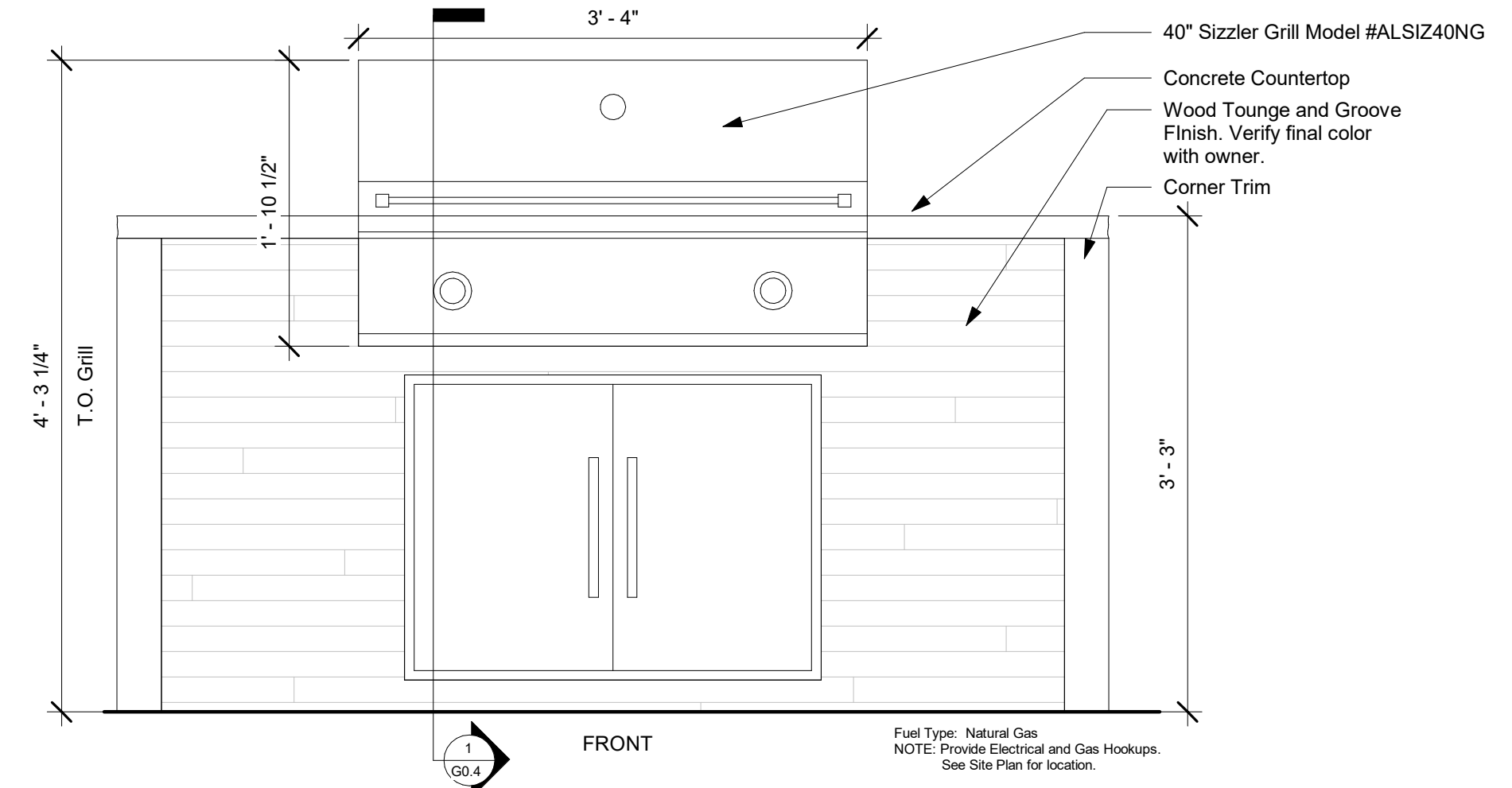
5 Firepit Detail
1" = 1'-0"



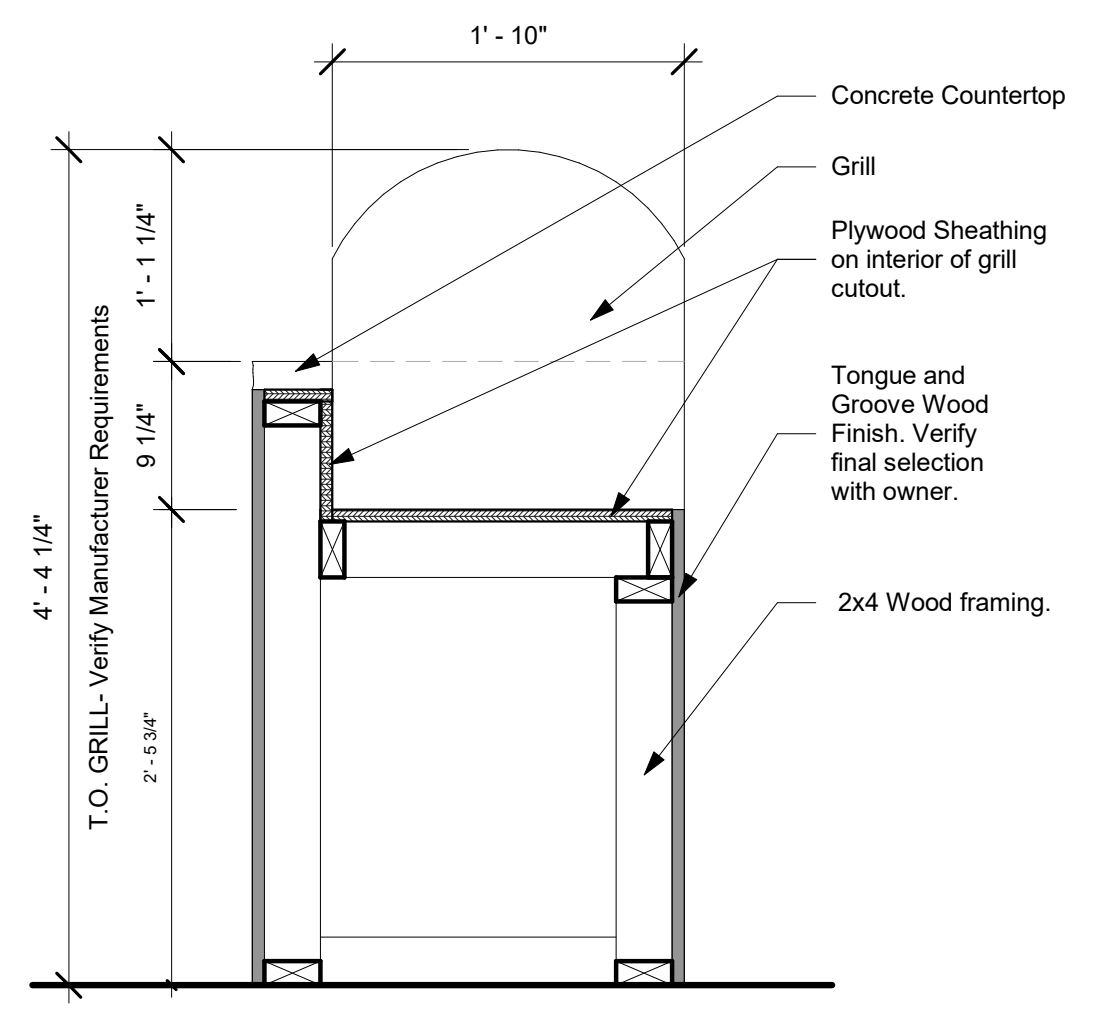
8 Monument Sign
1" = 1'-0"



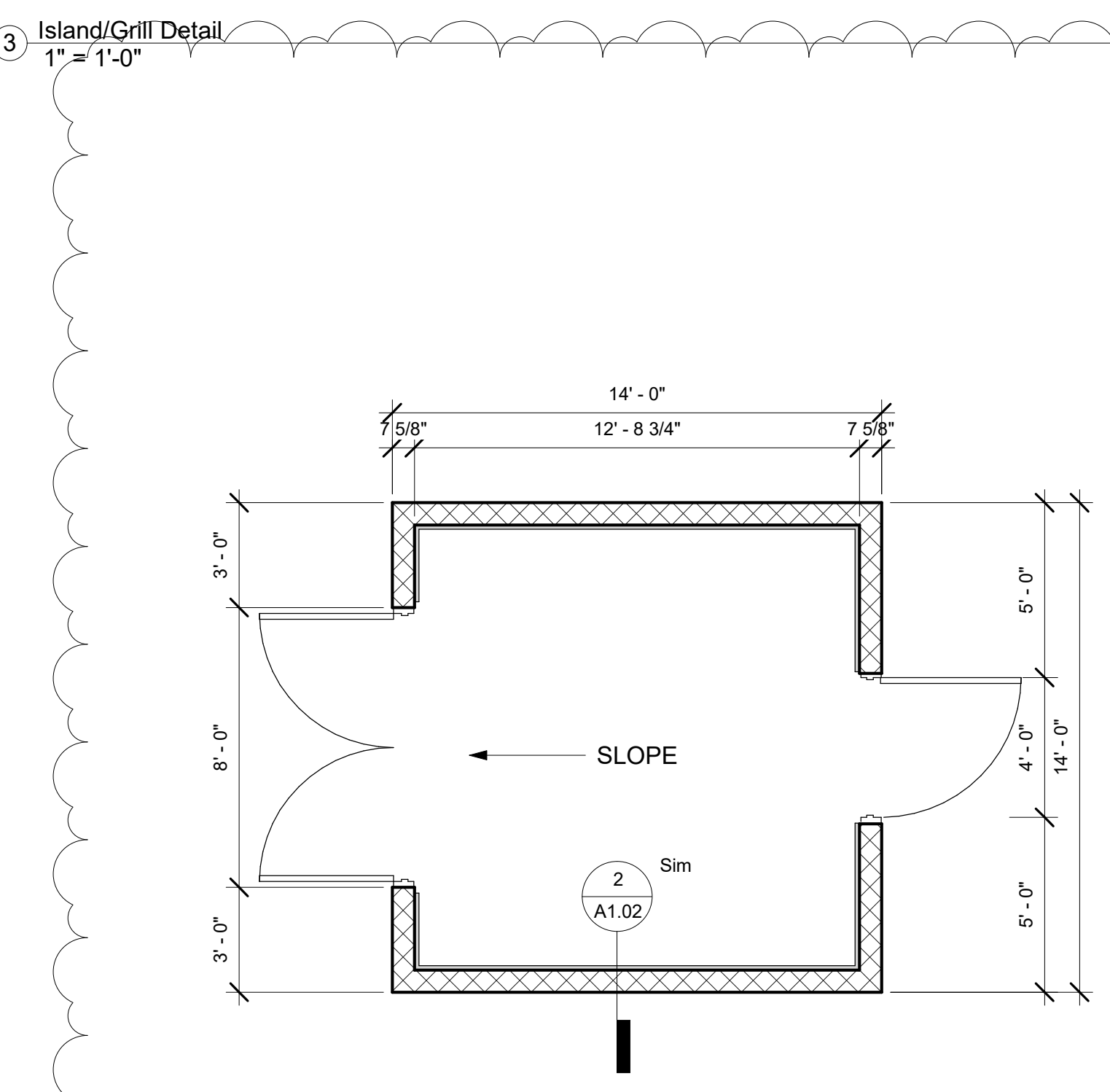
6 Pool Fencing
3/4" = 1'-0"



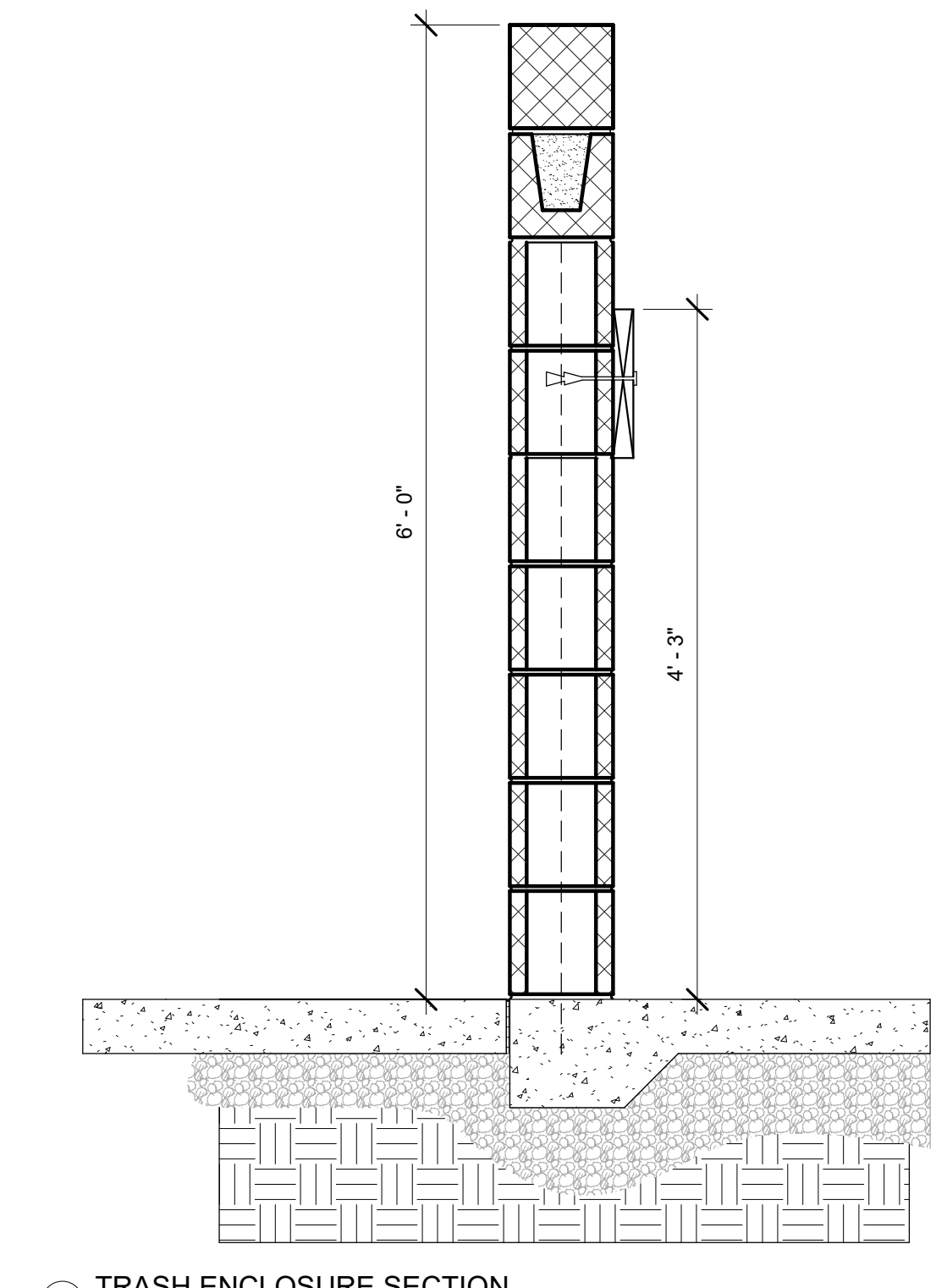
3 Island/Grill Detail
1" = 1'-0"



3 Island/Grill Detail
1" = 1'-0"



1 TRASH ENCLOSURE PLAN
1/4" = 1'-0"



2 TRASH ENCLOSURE SECTION
1" = 1'-0"



(NOT ACCURATE COLOR)

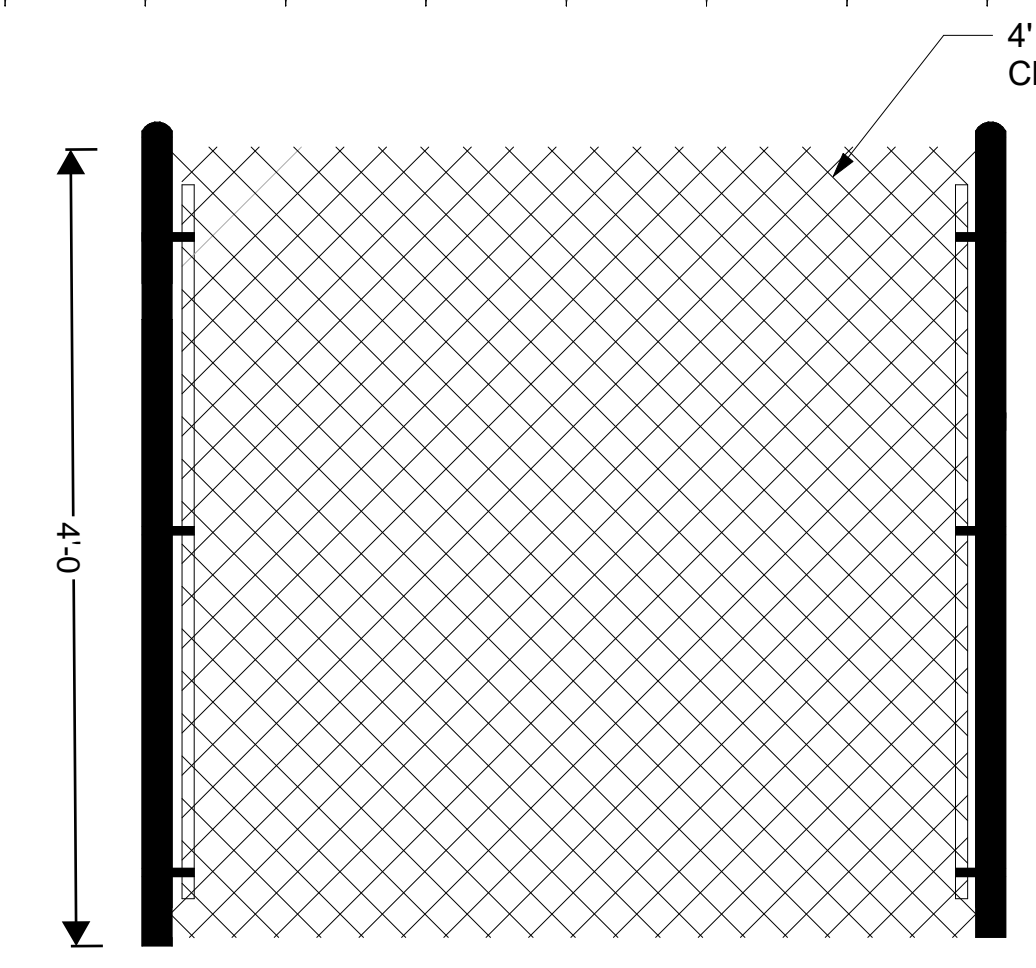


302 SHADOW
(ACCURATE COLOR)

**PRELIMINARY
NOT FOR
CONSTRUCTION**



DOG PARK BLACK VINYL CHAIN LINK FENCE



7 Dog Park Fence
3/4" = 1'-0"

ARCHITECT
Project Architect: Laura Devine
Email: laura.devine@lloydcompanies.com

CONSULTANTS

CIVIL
4121 NW Utlandale Drive
Utlandale, IA 50322
515.369.4429

EA
CIVIL DESIGN ADVANTAGE
Project Manager: Erin Glendick
Erin@cdadw.com

MEP
4609 S. Techlink Cir
Sioux Falls, SD 57106
605.362.3793

WEST PLANS ENGINEERING, INC.
Electrical Project Manager: Harlan Osterloo
harlan.osterloo@westplansengineering.com
Mechanical Engineer: Connor Swankoski, P.E.
connor.swankoski@westplansengineering.com

STRUCTURAL
524 N Main Ave, Suite
201 Sioux Falls, SD 57104
605.305.4035

RE RAKER RHODES
Engineering
Project Manager: Jerad Hoffman
JHoffman@rakerhodes.com

No.	Description	Date
4	City Submittal #2	6.8.2022

THE PITCH
Site Details

Project No.	21077
	12.03.2021
Drawn by:	ROBI
Checked by:	Checker

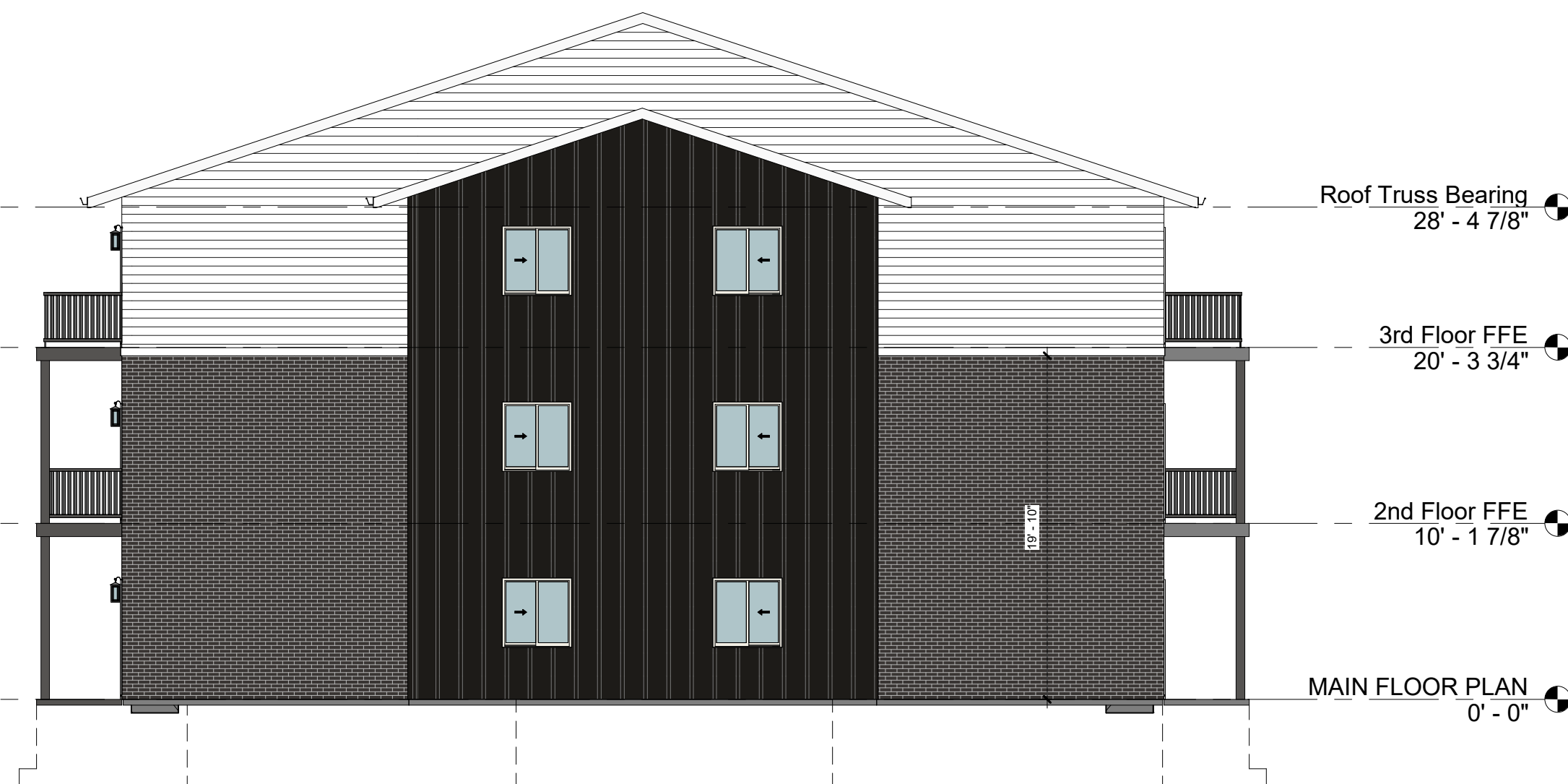
A1.02



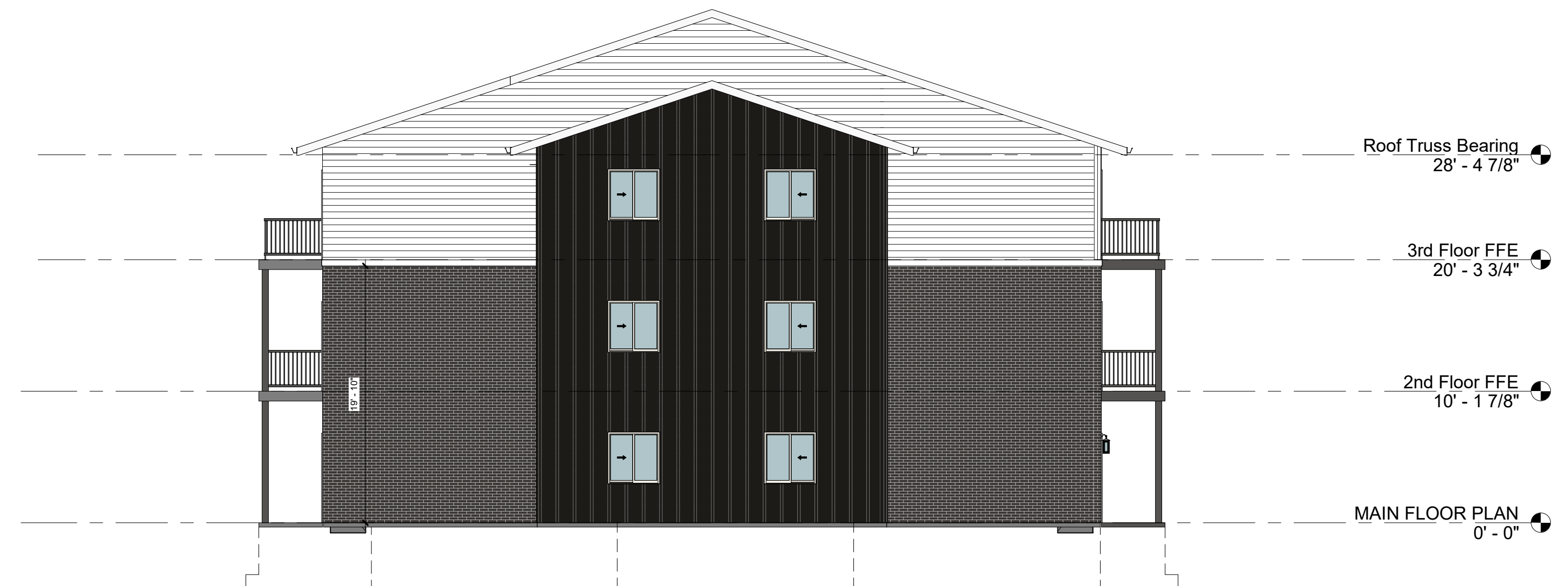
1 Front Elevation- 72 Unit
1/16" = 1'-0"



2 Back Elevation- 72 Unit
1/16" = 1'-0"



3 Side Elevation- 72 Unit
1/8" = 1'-0"



4 Side Elevation
1/8" = 1'-0"

EXTERIOR MATERIALS PALETTE-



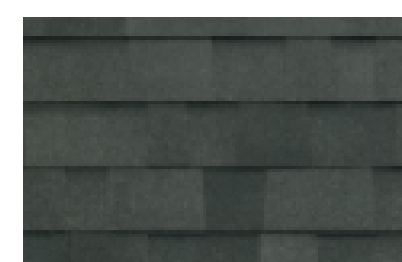
Abyss Black

LP SMARTSIDE-
- 6" LAP SIDING
- BOARD AND BATTEN
22.07%



Snowscape White

LP SMARTSIDE-
- 6" LAP SIDING = 37.74%
- BOARD AND BATTEN = 2.53%



Midnight Black

MALARKEY SHINGLES-
- Vista AR



Northern Ash

VERSETTA STONE-
- LEDGESTONE STYLE STONE SIDING
35.90%



ARCHITECT

Project Architect: Laura Devine
Email: laura.devine@lloydgroup.com

CONSULTANTS

CIVIL
EA
CIVIL DESIGN ADVANTAGE
4121 NW Ulandale Drive
Urbandale IA 50322
515.369.4429
Project Manager: Erin Orlowski
Erin@cdadvent.com

MEP
WPE
WEST PLAINS ENGINEERING, INC.
4609 S Technik Ct
Sioux Falls, SD 57105
605.362.3753
Electrical Project Manager: Harlan Osterloh
harlan.osterloh@westplainsengineering.com
Mechanical Engineer: Connor Swontek, P.E.
connor.swontek@westplainsengineering.com

STRUCTURAL
524 N Main Ave, Suite
201 Sioux Falls, SD 57104
605.305.4035

RE RAKER RHODES
Engineering
Project Manager: Jerad Hoffman
jrhoffman@rakerhodes.com

No.	Description	Date
2	Revision 2	2.17.2022

THE PITCH

BLDG 2 (74 CL)
Exterior Elevations

Project No. 21077
Date: 12.03.2021
Drawn by: MLM
Checked by: LED

A3.20



1 Front Elevation- 72 Unit Side A
1/8" = 1'-0"



2 Front Elevation- 72 Unit Side B
1/8" = 1'-0"

KEYNOTES

E1	Prefinished cement board, 1x6 Trim. LP SMARTSIDE. Color: Snowscape White.
E3	Prefinished cement board, 8" lap siding. LP SMARTSIDE. Color: Snowscape White.
E4	Prefinished cement board, board and batten. LP SMARTSIDE. Color: Abyss Black.
E5	Prefinished cement board, board and Batten. LP SMARTSIDE. Color: Snowscape White.
E6	Roof system consists of: Class III- Impact Resistant 30 year laminated fiberglass shingles, #15 asphalt felt underlayment (self adhered ice & water shield rubberized membrane 60" up from eave & 30" ea. side of all valleys), plywood roof sheathing (see struct.) w/ edge clips, & roof trusses @ 24" o.c. (verify w/ struct. & roof truss mfr.)
E9	Prefinished aluminum gutter. Color: White.
E11	Versetta Stone Mortarless screw applied stone. Color: Northern Ash Style: Ledgestone.
E18	18" High metal building signage on 3" standoffs. Backlight. Finish: Weathered metal, Color: Copper/Rust. See Detail 8/A1.02.



ARCHITECT

Project Architect: Laura Devine
Email: laura.devine@lloydgroup.com

CONSULTANTS

CIVIL
EA
CIVIL DESIGN ADVANTAGE
4121 NW Udonale Drive
Urbandale IA 50322
515.369.4429
Project Manager: Erin Orlowski
erin@cdadventure.com

MEP
WPE
WEST PLAINS ENGINEERING
4609 S Technik Cir
Sioux Falls, SD 57108
605.362.3763
Electrical Project Manager: Harlan Osterloh
harlan.osterloh@westplainsengineering.com
Mechanical Engineer: Connor Swontak, P.E.
connor.swontak@westplainsengineering.com

STRUCTURAL
534 N Main Ave, Suite
201 Sioux Falls, SD 57104
605.305.4035

REAKER RHODES
Engineering
Project Manager: Jerad Hoffman
jhoffman@rakerhodes.com

No.	Description	Date
2	Revision 2	2.17.2022

THE PITCH

BLDG 2 (74 CL)
Exterior Elevations

Project No. 21077
Date: 12.03.2021
Drawn by: MORGAN
Checked by: Checker

A3.21



1 Back Elevation Side A
1/8" = 1'-0"



2 Back Elevation Side B
1/8" = 1'-0"

KEYNOTES	
E1	Prefinished cement board, 1x6 Trim. LP SMARTSIDE. Color: Snowscape White.
E3	Prefinished cement board, 8" lap siding. LP SMARTSIDE. Color: Snowscape White.
E4	Prefinished cement board, board and batten. LP SMARTSIDE. Color: Abyss Black.
E5	Prefinished cement board, board and Batten. LP SMARTSIDE. Color: Snowscape White.
E9	Prefinished aluminum gutter. Color: White.
E11	Versetta Stone Mortarless screw applied stone. Color: Northern Ash Style: Ledgestone.

**PRELIMINARY
NOT FOR
CONSTRUCTION**

ARCHITECT
Project Architect: Laura Devine
Email: laura.devine@lloydcompanies.com

CONSULTANTS

CIVIL
4121 NW Utlandale Drive
Liftlandale IA 50222
515.369.4429
CIVIL DESIGN ADVANTAGE
Project Manager: Erin Olenoske
Erin@cdadw.com

MEP
4609 S. Techlink Cir
Sioux Falls, SD 57106
605.302.3793
WPE
Electrical Project Manager: Harlan Osterloo
harlan.osterloo@westplansengineering.com
Mechanical Engineer: Connor Swanson, P.E.
connor.swanson@westplansengineering.com

STRUCTURAL
524 N Main Ave, Suite
201 Sioux Falls, SD 57104
605.305.4035
REAKER RHODES
Engineering
Project Manager: Jerad Hoffman
JHoffman@rakerhodes.com

No.	Description	Date
2	Revision 2	2.17.2022

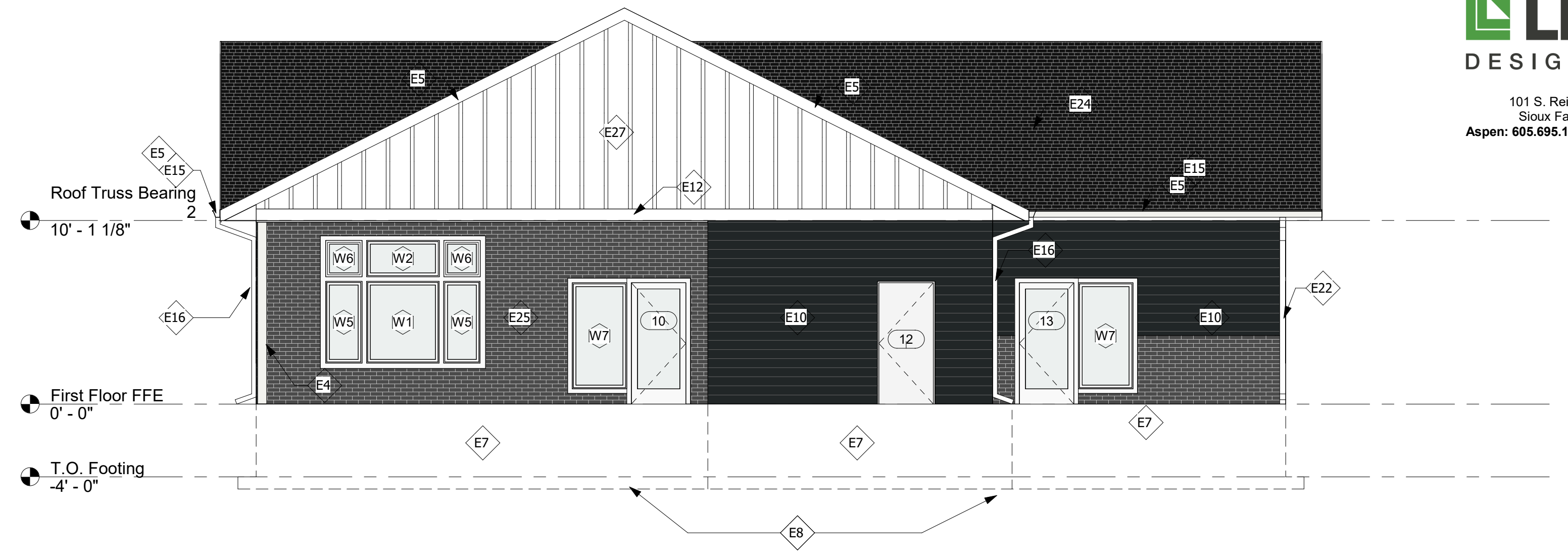
THE PITCH
BLDG 2 (74 CL) Exterior Elevations

Project No. 21077
Date: 12.03.2021
Drawn by: MORGAN
Checked by: Checker

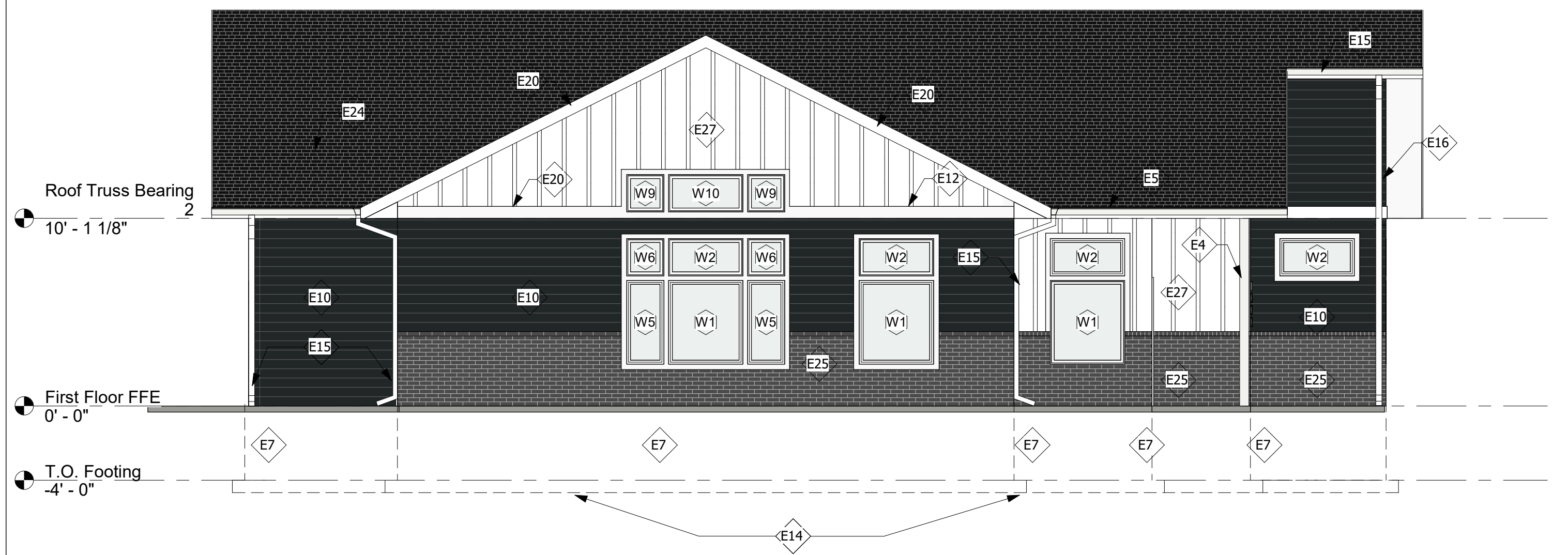
A3.22



1 Front Elevation-Clubhouse
3/16" = 1'-0"



2 Back Elevation-Clubhouse
3/16" = 1'-0"



3 Side A Elevation-Clubhouse
3/16" = 1'-0"



4 Side B Elevation-Clubhouse
3/16" = 1'-0"

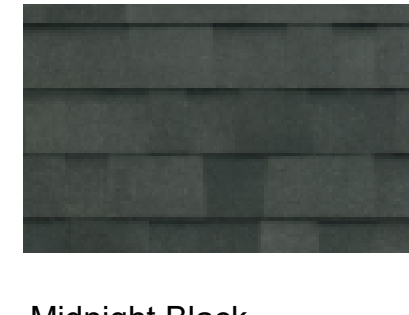
EXTERIOR MATERIALS PALETTE-



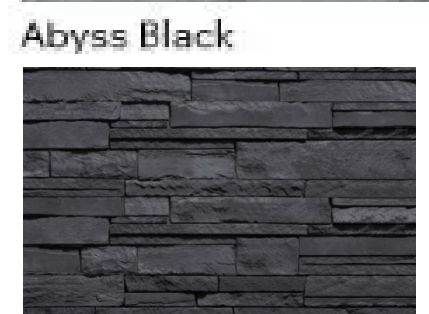
LP SMARTSIDE-
- 6" LAP SIDING
- BOARD AND BATTEN
42.42%



LP SMARTSIDE-
- 6" LAP SIDING
- BOARD AND BATTEN
21.31%



MALARKEY SHINGLES-
- Vista AR



VERSETTA STONE-
- LEDGESTONE STYLE STONE SIDING
31.99%

Northern Ash

KEYNOTES

E4	4" prefinished cement board corner trim. Color White.
E5	8" prefinished cement board fascia trim. Color White.
E7	Poured concrete foundation wall. See struct.
E8	Poured concrete footing. See struct.
E10	LP Smartside cement board lap siding. Color: Abyss Black.
E12	Insulated fiberglass door.
E14	42" tall railing. Top and Bottom Rail to be wood, Balusters to be metal. Typical.
E15	Prefinished aluminum gutter.
E16	Prefinished aluminum downspout. Add drain tile for gutter.
E20	8" prefinished cement board trim. Color White.
E22	Water spicket.
E24	Roof system consists of: 30 year laminated fiberglass shingles, #15 asphalt felt underlayment (self adhered ice & water shield rubberized membrane 60" up from eave & 30" ea. side of all valleys), plywood roof sheathing (see struct.) w/ edge clips, & roof trusses @ 24" o.c. (verify w/ struct. & roof truss mfr.)
E25	Versetta Stone. Ledgestone stone siding. Color: Northern Ash.
E27	LP Smartside board and batten siding. Color: Snowscape White.



ARCHITECT

Project Architect: Laura Devine
Email: laura.devine@lloydgroup.com

CONSULTANTS

CIVIL
EA
3405 SE Crossroads Drive, Suite G
Grimes, IA 50111
515.369.4429
CIVIL DESIGN ADVANTAGE
Project Manager: Eryn Orlowski
ErynO@cdae.com

MEP
WPE
4609 S Technik Ct
Sioux Falls, SD 57108
605.362.3753
Electrical Project Manager: Harken Osterloh
harken.osterloh@westplainsengineering.com
Mechanical Engineer: Connor Switotek, P.E.
connor.switotek@westplainsengineering.com

STRUCTURAL
RE RAKER RHODES
Engineering
524 N Main Ave, Suite
201 Sioux Falls, SD 57104
605.305.4035
Project Manager: Jerad Hoffman
jrhoffman@rakerhodes.com

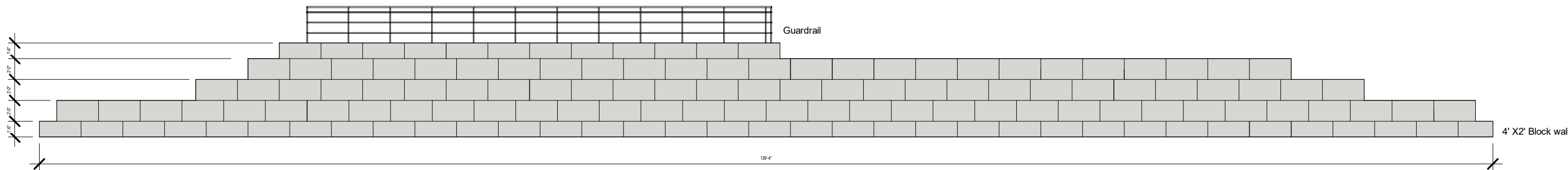
No.	Description	Date
2	Revision 2	2.17.2022

THE PITCH

BLDG 3(CH) Exterior Elevations

Project No. 21007
Date: 06.3.2021
Drawn by: LED
Checked by: LED

A3.31



① Retaining Wall
1" = 10'-0"



SAMPLE IMAGE OF RETAINING BLOCK
COLOR TO MATCH