

AS - BUILT

CONSTRUCTION DRAWINGS FOR PUBLIC IMPROVEMENTS

PRAIRIE CROSSING

WAUKEE, IOWA

ALICE'S, L.C., C/O KNAPP PROPERTIES,
4949 WESTOWN PARKWAY, SUITE 200, WEST DES MOINES, IOWA 50266



VICINITY MAP
NOT TO SCALE



UTILITY CONTACTS

- SANITARY SEWER** - WAUKEE PUBLIC WORKS DEPARTMENT (515-987-4363)
- WATER MAIN** - WAUKEE PUBLIC WORKS DEPARTMENT (515-987-4363)
- STORM SEWER** - WAUKEE PUBLIC WORKS DEPARTMENT (515-987-4363)
- NATURAL GAS UTILITY** - WAUKEE PUBLIC WORKS DEPARTMENT (515-987-4363)
- ELECTRIC** - MID AMERICAN ENERGY (515-252-6547)

Call Before You Dig!
1.800.292.8989
Call the toll-free number at least
48 hours
prior to ALL excavations in Iowa.

GENERAL NOTES

- ANY CHANGES TO THE CONSTRUCTION DRAWINGS DURING CONSTRUCTION SHALL BE APPROVED IN WRITING BY THE CITY OF WAUKEE ENGINEERING DEPARTMENT.
- THE CONTRACTOR IS RESPONSIBLE FOR ANY CHANGES MADE DURING CONSTRUCTION THAT HAVE NOT BEEN APPROVED IN WRITING BY THE CITY OF WAUKEE ENGINEERING DEPARTMENT.
- THE CONTRACTOR SHALL NOTIFY THE CITY OF WAUKEE ENGINEERING DEPARTMENT 48-HOURS IN ADVANCE OF ANY WORK BEING PERFORMED ON A HOLIDAY OR WEEKEND.
- ALL CONSTRUCTION STAKING SHALL BE PERFORMED BY A LICENSED ENGINEER OR LAND SURVEYOR.
- A CERTIFIED AS-BUILT GRADING PLAN SHALL BE PROVIDED TO THE CITY OF WAUKEE ENGINEERING DEPARTMENT PRIOR TO ACCEPTANCE OF PUBLIC IMPROVEMENTS AND APPROVAL OF THE FINAL PLAT.

QUANTITIES

SANITARY SEWER

5819 L.F. 5067 L.F. 8-INCH SANITARY SEWER
572 L.F. 572 L.F. 10-INCH SANITARY SEWER
25 EA. 25 EA. MANHOLES
73 EA. 73 EA. SERVICES

WATER MAIN

5247 L.F. 8-INCH WATER MAIN
2241 L.F. 12-INCH WATER MAIN
28 EA. HYDRANT TEE & 6-INCH VALVE
8 EA. BLOWOFF HYDRANT
10 EA. 8-INCH VALVE
10 EA. 12-INCH VALVE
73 EA. SERVICES

STORM SEWER

3190 L.F. 6-INCH A2000 PERFORATED PVC
600 L.F. 8-INCH A2000 PERFORATED PVC
2165 L.F. 15-INCH RCP
583 L.F. 18-INCH RCP
526 L.F. 21-INCH RCP
1272 L.F. 24-INCH RCP
210 L.F. 27-INCH RCP
86 L.F. 30-INCH RCP
212 L.F. 30-INCH ARCH RCP
37 L.F. 33-INCH RCP
305 L.F. 36-INCH RCP
1197 L.F. 42-INCH RCP
296 L.F. 48-INCH RCP
1519 L.F. 54-INCH RCP
241 L.F. 60-INCH RCP
232 L.F. 66-INCH RCP
20 EA. 51X-401 MANHOLE
34 EA. 51X-501 INTAKE
15 EA. 51X-503 INTAKE
6 EA. 51X-505 INTAKE
1 EA. 51X-506 INTAKE
1 EA. 51X-512 INTAKE
4 EA. 51X-513 INTAKE
72 EA. SERVICES
*CAST IN PLACE STRUCTURES

PAVING

29332 S.Y. 7-INCH NON-REINFORCED P.C.C.
511 S.Y. 9-INCH NON-REINFORCED P.C.C. - ALICE'S ROAD R.O.W.
1100 S.Y. 10-1/2 INCH NON-REINFORCED P.C.C. - HICKMAN ROAD R.O.W.
34678 S.Y. SUB GRADE PREP. WORK
6620 S.F. 4-INCH P.C.C. - 5.0' WIDE SIDEWALK PAVING AND RAMP
2830 S.F. 5-INCH P.C.C. - TRAIL PAVING ADJACENT TO OUTLOT '2'

LEGAL DESCRIPTION

ALL OF OUTLOT 'X', THE CROSSING AT ALICE'S ROAD PLAT 3, AN OFFICIAL PLAT RECORDED IN BOOK 2008, PAGE 11526 AT DALLAS COUNTY, IOWA.

ALL BEING IN AND FORMING A PART OF THE CITY OF WAUKEE, DALLAS COUNTY, IOWA.

CONTACT

ALICE'S, L.C.
C/O KNAPP PROPERTIES
4949 WESTOWN PARKWAY, SUITE 200
WEST DES MOINES, IA 50266
CONTACT PERSON: AIMEE STAUDT
CONTACT PH: 515-223-4000

DRAWING INDEX FOR PUBLIC IMPROVEMENTS

- 1-7 SANITARY SEWER PLAN & PROFILE
- 8 FIRE HYDRANT COVERAGE MAP
- 9-16 WATER MAIN PLAN & PROFILE
- 17-26 STORM SEWER PLAN & PROFILE
- 27 CONSTRUCTION DRAWING DETAILS
- 28-31 GRADING PLAN
- 32-39 PAVING PLAN & PROFILE
- 40 PAVING INTERSECTION DETAILS
- 41 SIDEWALK DETAILS
- 42 LANDSCAPING BUFFER PLAN
- 43 HICKMAN ROAD DECELERATION LANE
- 44 STREET CENTERLINE LAYOUT SHEET
- 45-48 STREET LIGHT LAYOUT PLAN

BENCHMARK

CUT 'X' ON NORTHEAST BOLT ON BASE OF COKE CLOCK
SOUTHEAST CORNER OF HIGHWAY #6 & ALICE'S ROAD.

ELEVATION-----1034.63

CERTIFICATION

I HEREBY CERTIFY THAT THIS ENGINEERING DOCUMENT HAS BEEN PREPARED BY ME OR UNDER MY DIRECT PERSONAL SUPERVISION AND THAT I AM A DULY LICENSED PROFESSIONAL ENGINEER UNDER THE LAWS OF THE STATE OF IOWA.

JERRY P. OLIVER, IOWA LIC. NO. 7844 DATE
MY LICENSE RENEWAL DATE IS DECEMBER 31, 2014

PAGES OR SHEETS COVERED BY THIS SEAL:
all sheets

DATE: JUNE 06, 2013

REVISION: JUNE 28, 2013

JULY 16, 2013

JULY 23, 2013

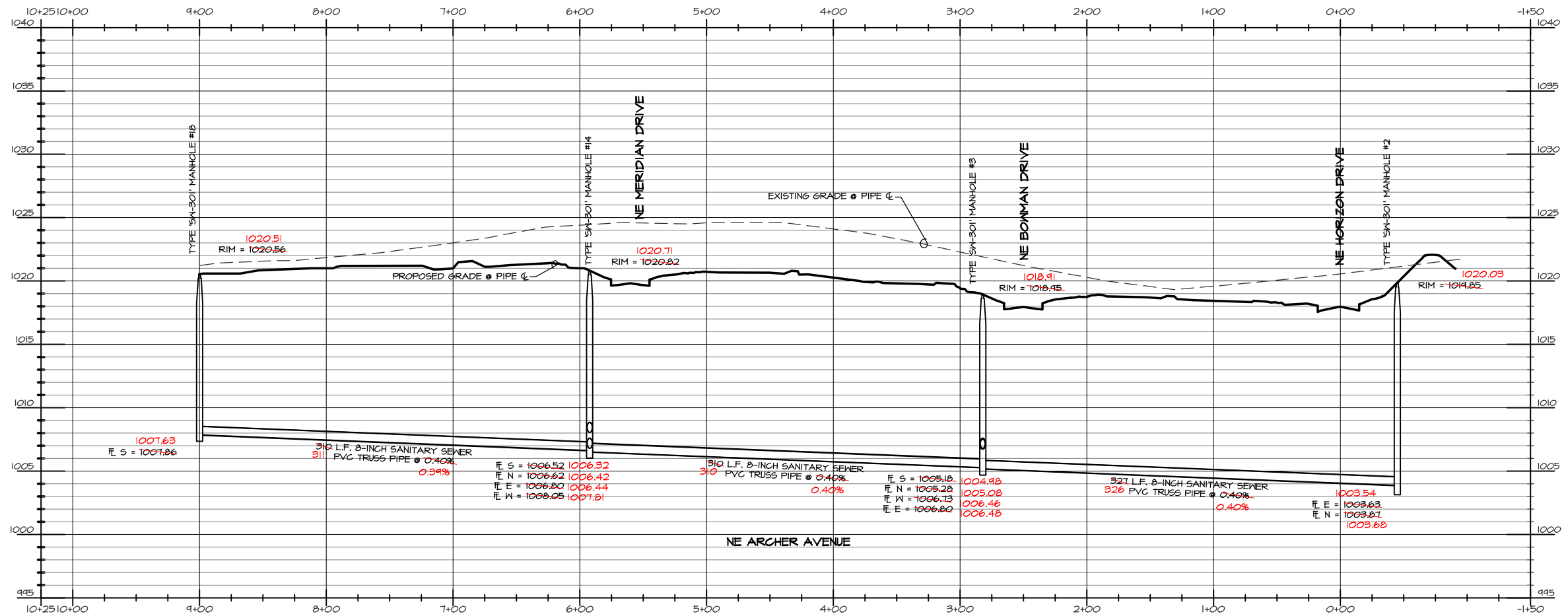
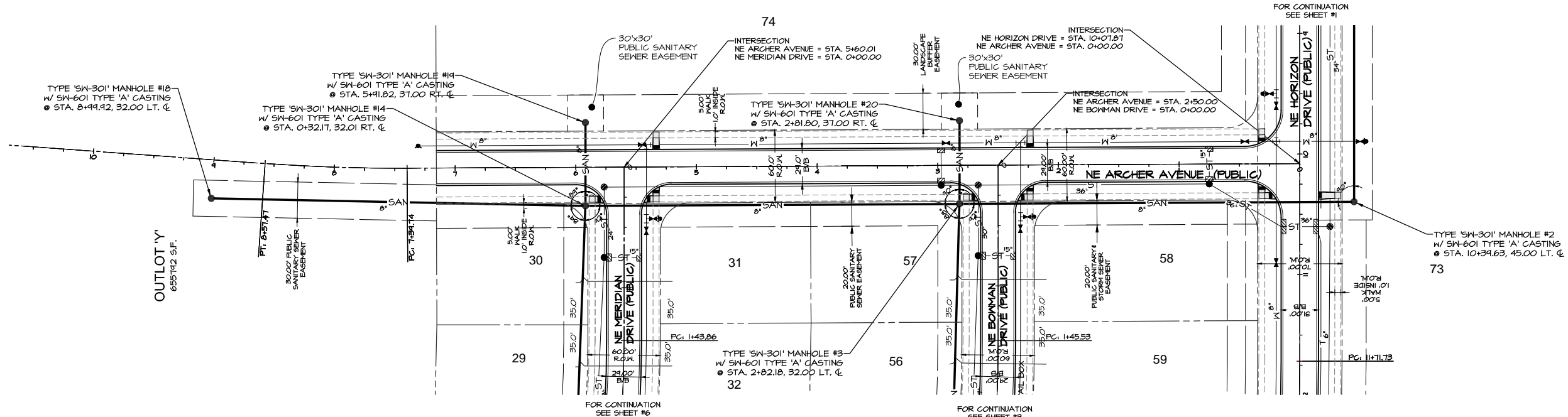
AUGUST 02, 2013

OCTOBER 08, 2013 SHEET #26

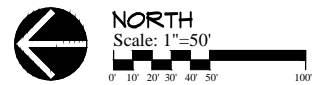
AS-BUILT: JUNE 17, 2014



Civil Engineering Consultants, Inc.
2400 86th Street . Unit 12 . Des Moines, Iowa 50322
515.276.4884 . Fax: 515.276.7084 . mail@ceclac.com



BENCHMARK
CUT 'X' ON NORTHEAST BOLT ON BASE OF COKE CLOCK
SOUTHEAST CORNER OF HIGHWAY #6 & ALICE'S ROAD.
ELEVATION-----1034.63



LEGEND

EXISTING/PROPOSED	
—	PLAT BOUNDARY
---	SANITARY SEWER # SIZE
---	STORM SEWER # SIZE
---	WATER MAIN # SIZE
○	MANHOLE
●	STORM INTAKE
⊕	FIRE HYDRANT
▽	VALVE
▽	FLARED END SECTION



SCALE
50' 5'

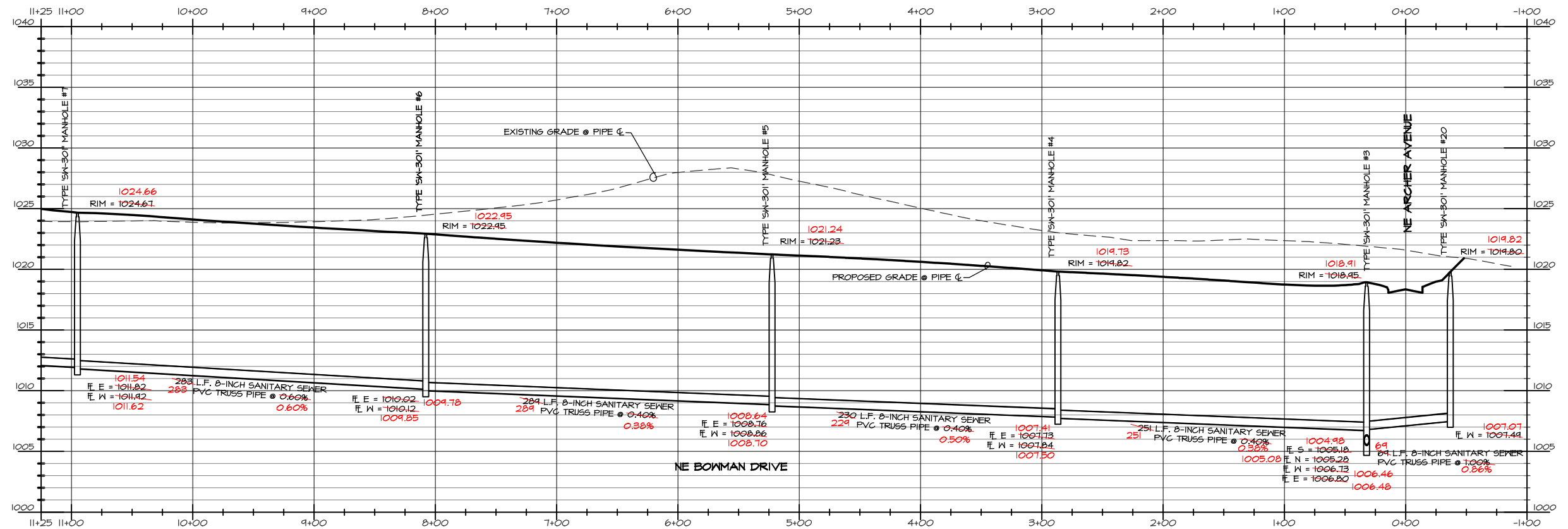
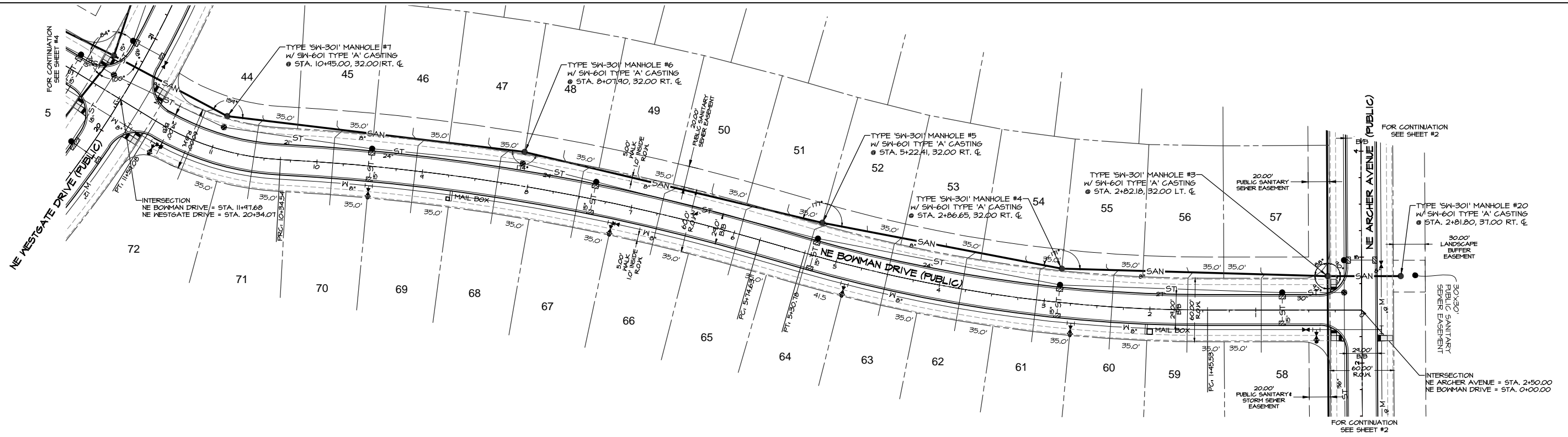
SHEET
2 OF 48

DATE: 6-6-2013
REVISION: 6-28-2013
7-16-2013
7-23-2013
8-02-2013

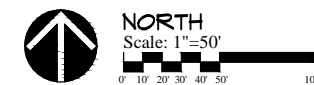
AS-BUILT: JUNE 17, 2014

Q:\E-FILES\6000\E6704\DWG AS-BUILT\E6704_CD_SANITARY AS-BUILT.dwg, 6/17/2014 8:50:58 AM, DWG To PDF.pc3

Q:\E-FILES\6000\E6704\DWG AS-BUILT\E6704 CD SANITARY AS-BUILT.dwg, 6/17/2014 8:51:24 AM, DWG To PDF.pc3



BENCHMARK
 CUT 'X' ON NORTHERN BOLT ON BASE OF COKE CLOCK
 SOUTHEAST CORNER OF HIGHWAY #6 & ALICE'S ROAD.
 ELEVATION-----1034.63



LEGEND

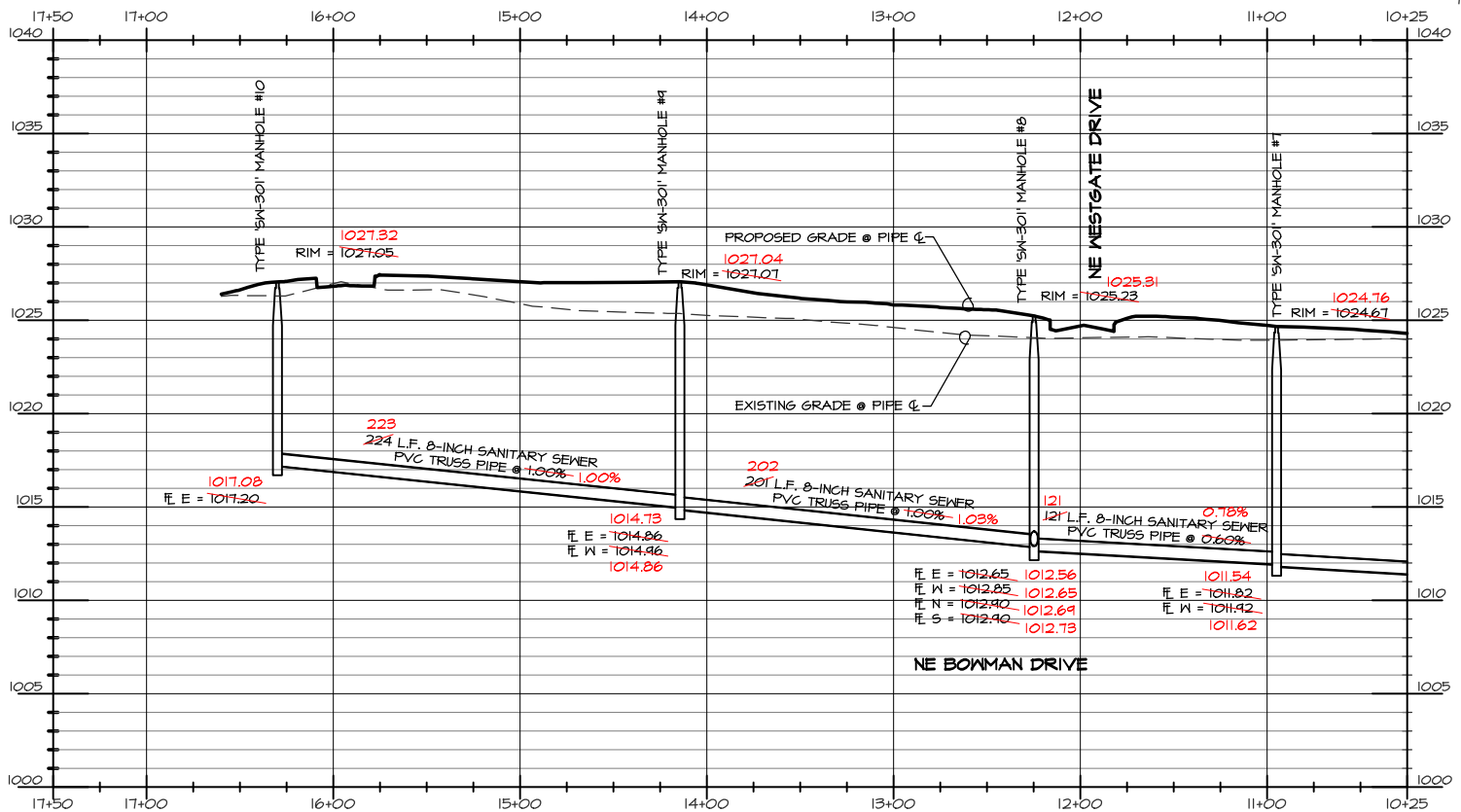
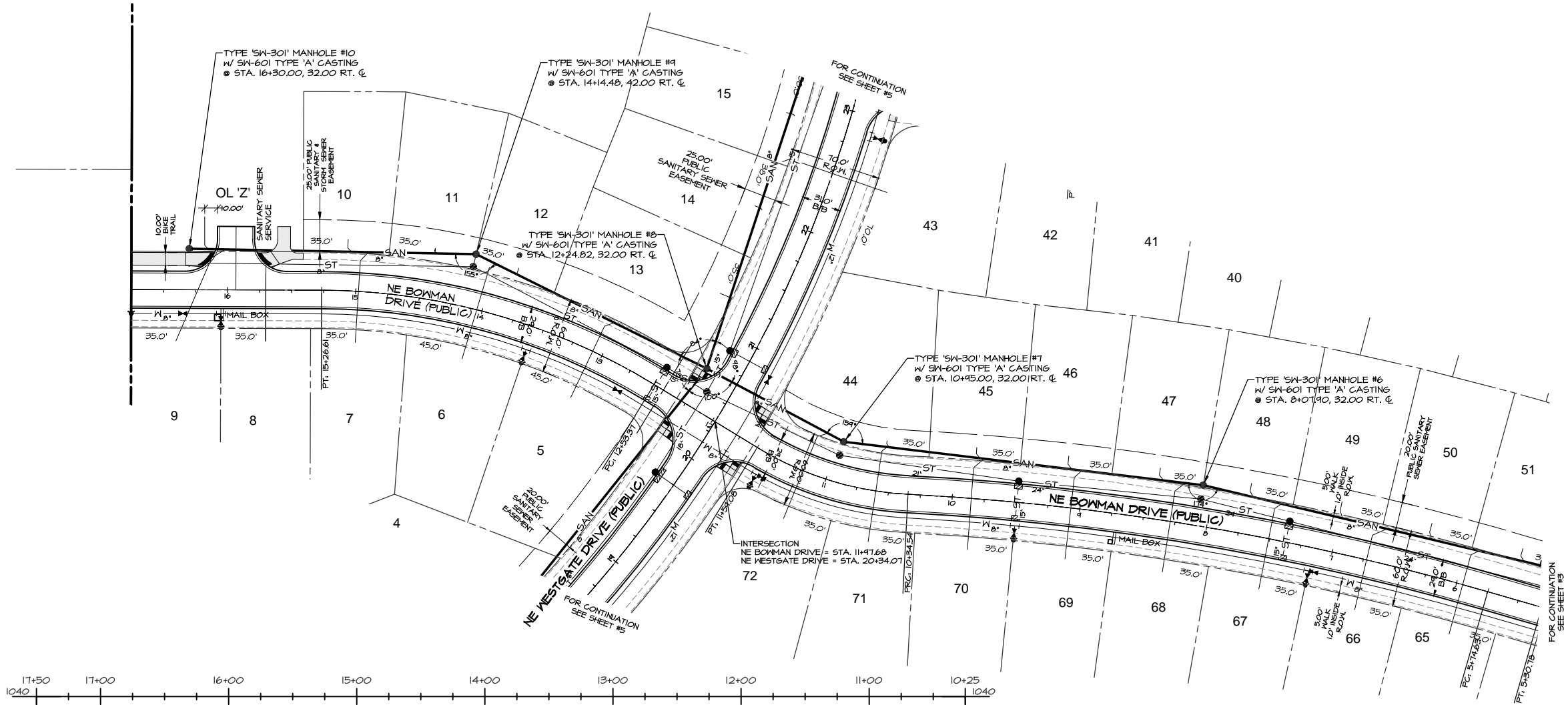
- | | | | |
|-----|--------------------|-----|-----------------------|
| --- | EXISTING/PROPOSED | --- | PLAT BOUNDARY |
| --- | SAN 8" | --- | SANITARY SEWER # SIZE |
| --- | ST 8" | --- | STORM SEWER # SIZE |
| --- | W 8" | --- | WATER MAIN # SIZE |
| ○ | MANHOLE | ○ | MANHOLE |
| □ | STORM INTAKE | □ | STORM INTAKE |
| ⊗ | FIRE HYDRANT | ⊗ | FIRE HYDRANT |
| ▽ | VALVE | ▽ | VALVE |
| ▽ | FLARED END SECTION | ▽ | FLARED END SECTION |



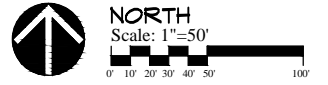
DATE: 6-6-2013
 REVISION: 6-28-2013
 T-16-2013
 T-23-2013
 8-02-2013
 AS-BUILT: JUNE 17, 2014

SHEET
3
 OF 48

Q:\E-FILES\6000\E6704\DWG AS-BUILT\E6704 CD SANITARY AS-BUILT.dwg, 6/17/2014 8:51:48 AM, DWG To PDF.pc3



BENCHMARK
 CUT 'X' ON NORTHEAST BOLT ON BASE OF COKE CLOCK
 SOUTHEAST CORNER OF HIGHWAY #6 & ALICE'S ROAD.
 ELEVATION-----1034.63



LEGEND

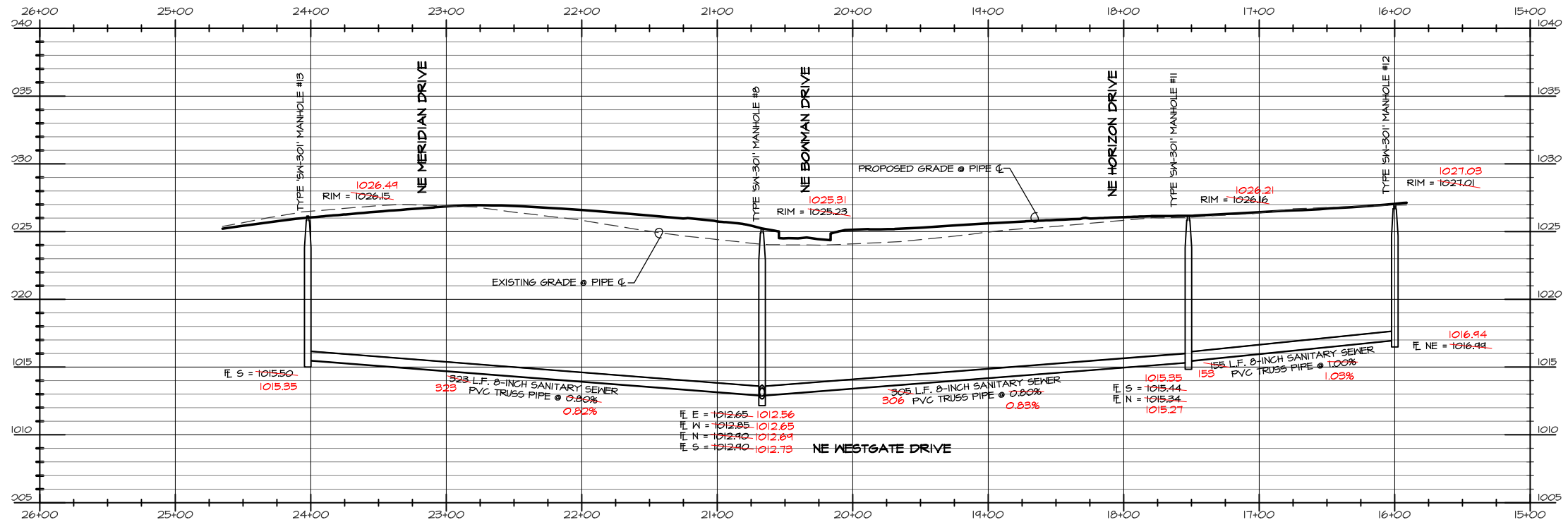
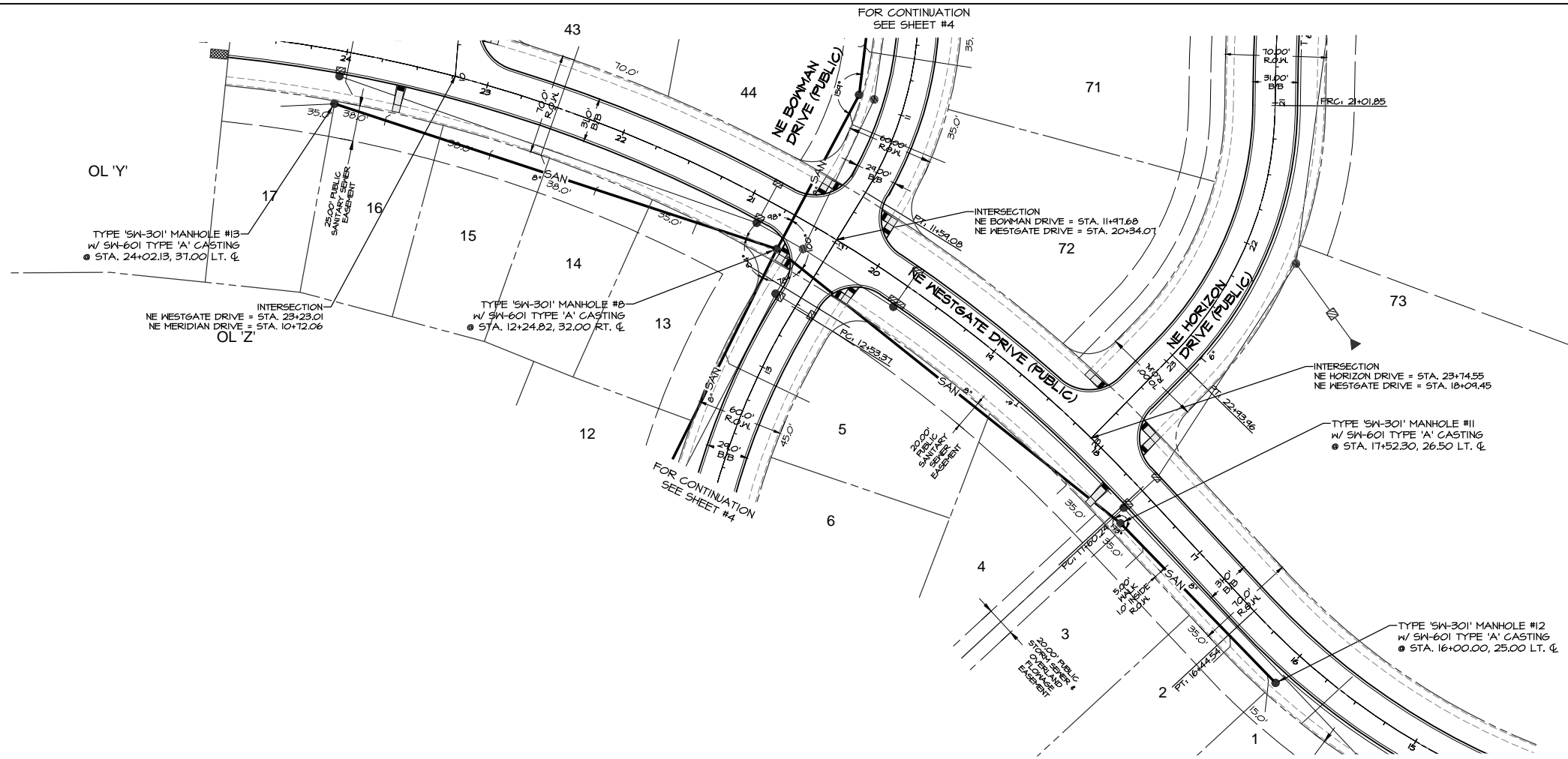
- | | | | |
|-----|--------------------|-----|-----------------------|
| --- | EXISTING/PROPOSED | --- | FLAT BOUNDARY |
| --- | SAN 8" | --- | SANITARY SEWER # SIZE |
| --- | ST 18" | --- | STORM SEWER # SIZE |
| --- | W 8" | --- | WATER MAIN # SIZE |
| ○ | MANHOLE | ○ | MANHOLE |
| □ | STORM INTAKE | □ | STORM INTAKE |
| ⊕ | FIRE HYDRANT | ⊕ | FIRE HYDRANT |
| ▽ | VALVE | ▽ | VALVE |
| ▾ | FLARED END SECTION | ▾ | FLARED END SECTION |

SCALE
 50' 5'

DATE: 6-6-2013
 REVISION: 6-28-2013
 7-16-2013
 7-23-2013
 8-02-2013

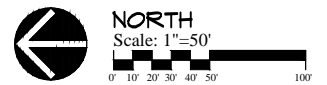
SHEET
 4
 OF 48

AS-BUILT: JUNE 17, 2014



- LEGEND**
- EXISTING/PROPOSED
- PLAT BOUNDARY
 - - - SAN 8" SANITARY SEWER & SIZE
 - - - ST 18" STORM SEWER & SIZE
 - - - W 8" WATER MAIN & SIZE
 - MANHOLE
 - STORM INTAKE
 - ▽ FIRE HYDRANT
 - ▽ VALVE
 - ▽ FLARED END SECTION

BENCHMARK
 CUT 'X' ON NORTHEAST BOLT ON BASE OF COKE CLOCK
 SOUTHEAST CORNER OF HIGHWAY #6 & ALICE'S ROAD.
 ELEVATION-----1034.63



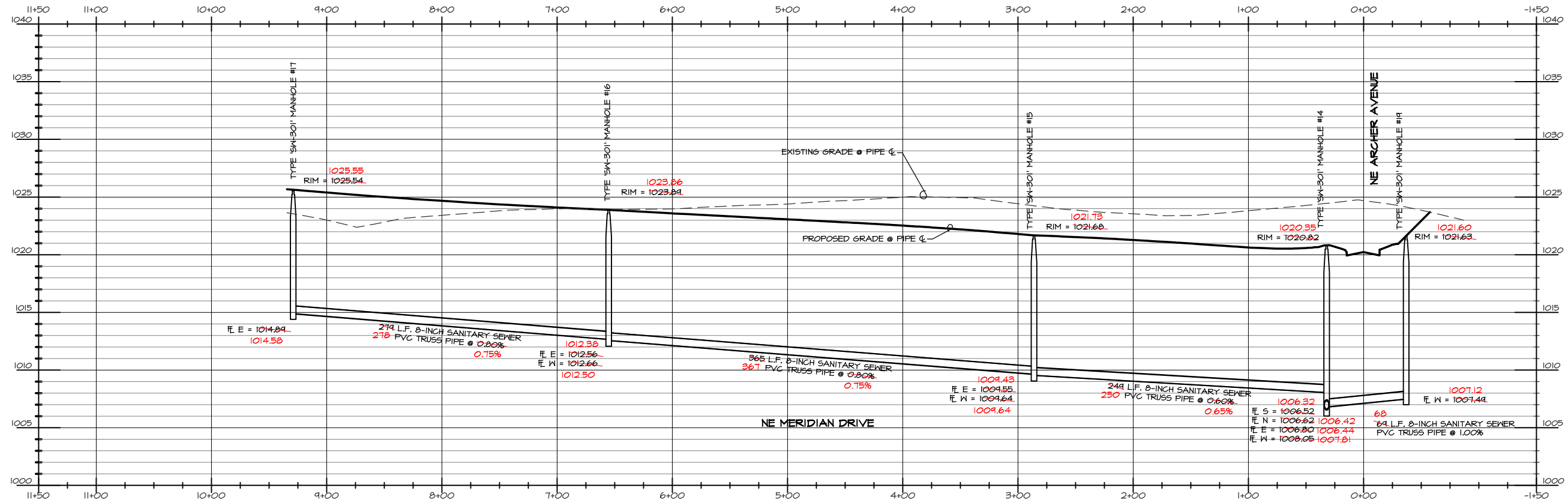
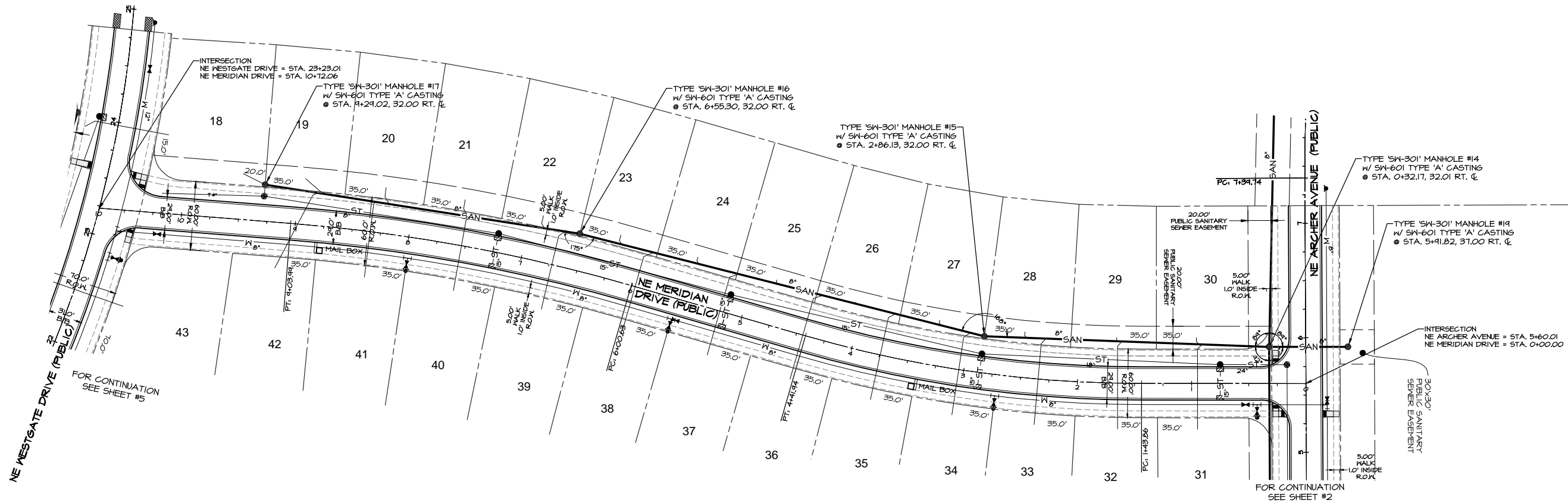
SCALE
5' = 1" (Graphic Scale)

DATE: 6-6-2013
 REVISION: 6-28-2013
 7-16-2013
 7-23-2013
 8-02-2013

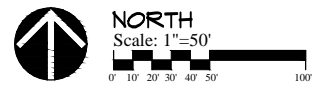
SHEET
5 OF 48

AS-BUILT: JUNE 17, 2014

Q:\E-FILES\6000\E6704\DWG AS-BUILT\E6704 CD SANITARY AS-BUILT.dwg, 6/17/2014 8:52:12 AM, DWG To PDF.pc3



BENCHMARK
 CUT 'X' ON NORTHEAST BOLT ON BASE OF COKE CLOCK
 SOUTHEAST CORNER OF HIGHWAY #6 & ALICE'S ROAD.
 ELEVATION-----1034.63



LEGEND

EXISTING/PROPOSED	
---	PLAT BOUNDARY
---	SANITARY SEWER # SIZE
---	STORM SEWER # SIZE
---	WATER MAIN # SIZE
○	MANHOLE
⊕	STORM INTAKE
⊕	FIRE HYDRANT
▽	VALVE
▽	FLARED END SECTION

SCALE
 5'
 50'

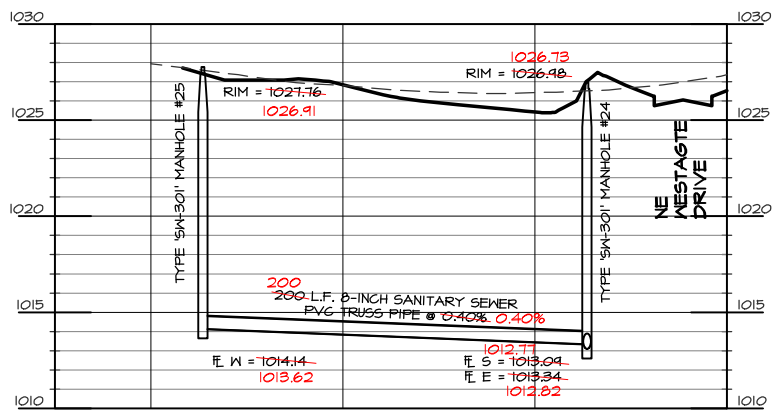
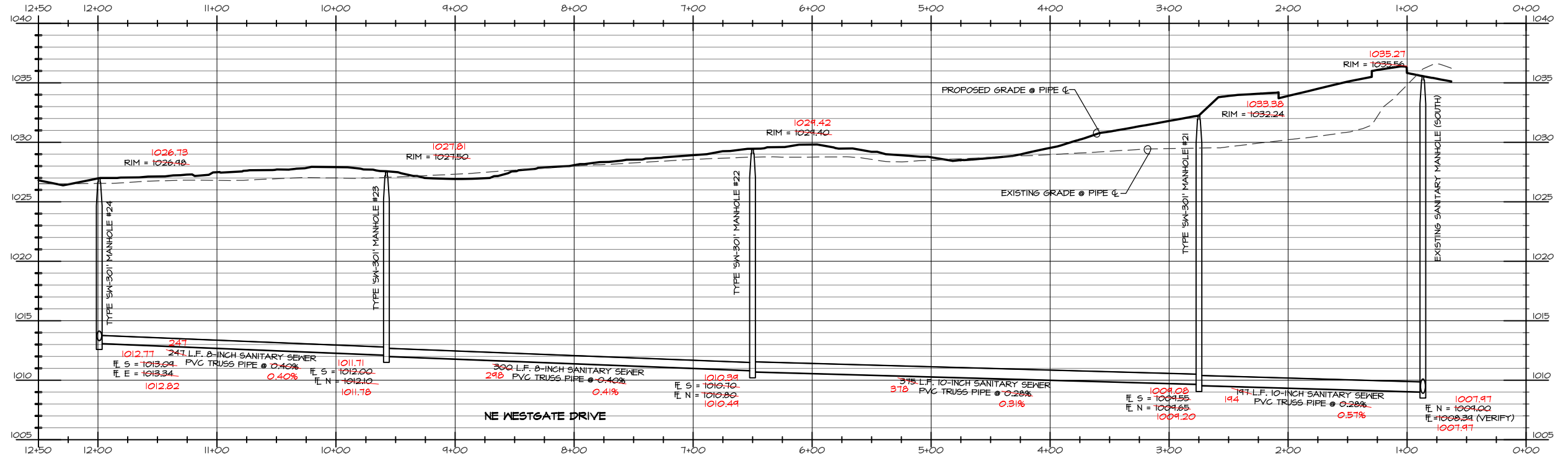
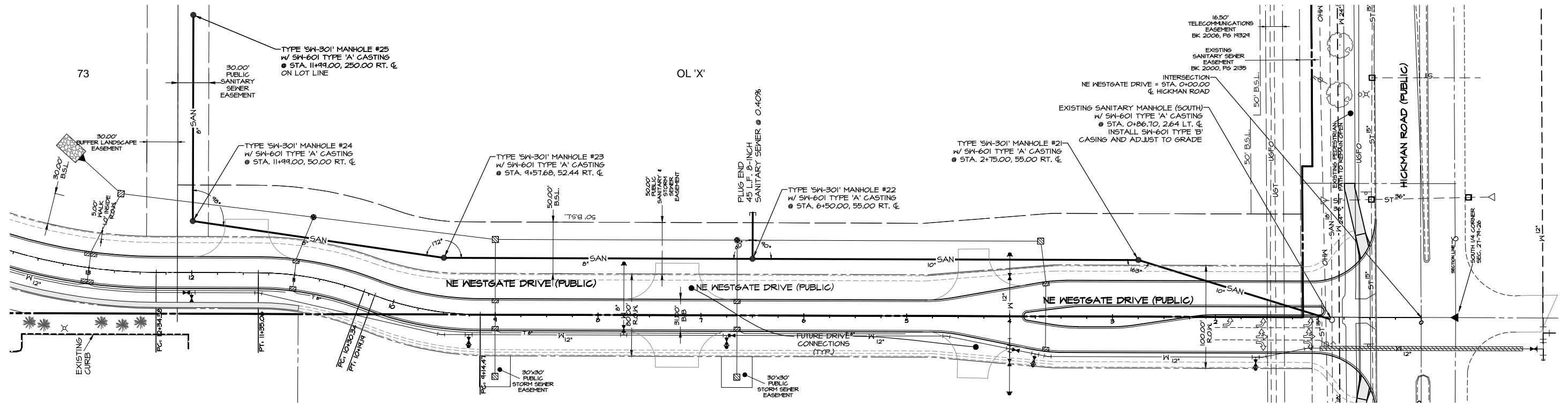
DATE: 6-6-2013
 REVISION: 6-28-2013
 T-16-2013
 T-23-2013
 8-02-2013

SHEET
 6
 OF 48

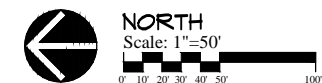
AS-BUILT: JUNE 17, 2014

Q:\E-FILES\6000\E6704\DWG AS-BUILT\E6704 CD SANITARY AS-BUILT.dwg, 6/17/2014 8:52:40 AM, DWG To PDF.pc3

Q:\E-FILES\6000\E6704\DWG AS-BUILT\E6704_CD SANITARY AS-BUILT.dwg, 6/17/2014 8:53:12 AM, DWG To PDF.pc3

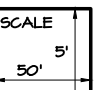


BENCHMARK
 CUT 'X' ON NORTHEAST BOLT ON BASE OF COKE CLOCK
 SOUTHEAST CORNER OF HIGHWAY #6 & ALICE'S ROAD.
 ELEVATION-----1034.63



LEGEND

- | | | | |
|-----|--------------------|-----|-----------------------|
| --- | EXISTING/PROPOSED | --- | PLAT BOUNDARY |
| --- | SAN 8" | --- | SANITARY SEWER # SIZE |
| --- | ST 8" | --- | STORM SEWER # SIZE |
| --- | W 8" | --- | WATER MAIN # SIZE |
| ○ | MANHOLE | ○ | MANHOLE |
| ● | STORM INTAKE | ● | STORM INTAKE |
| ▽ | FIRE HYDRANT | ▽ | FIRE HYDRANT |
| ▽ | VALVE | ▽ | VALVE |
| ▽ | FLARED END SECTION | ▽ | FLARED END SECTION |



DATE: 6-6-2013
 REVISION: 6-28-2013
 7-16-2013
 7-23-2013
 8-02-2013

SHEET
 7
 OF 48

AS-BUILT: JUNE 17, 2014

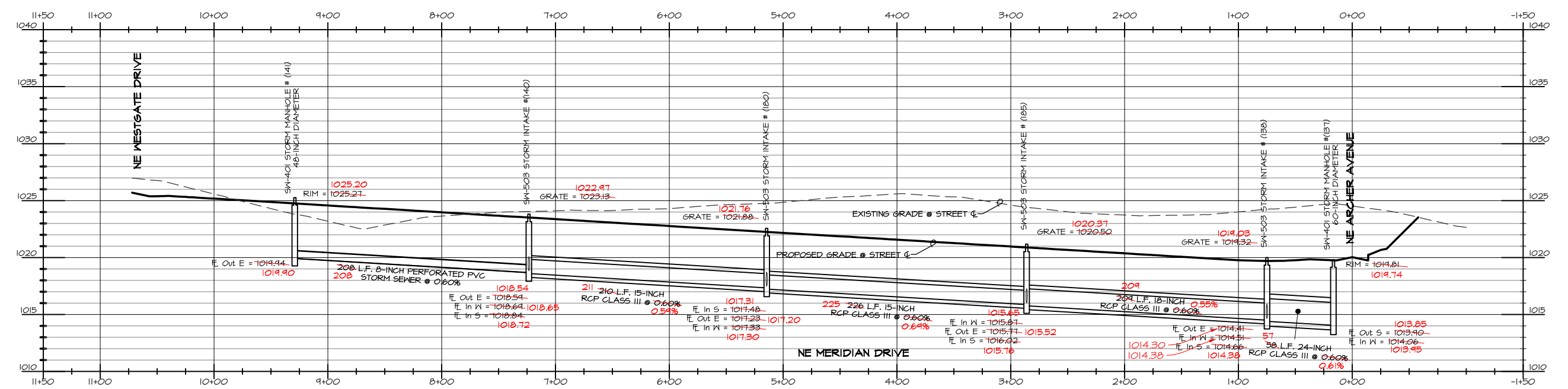
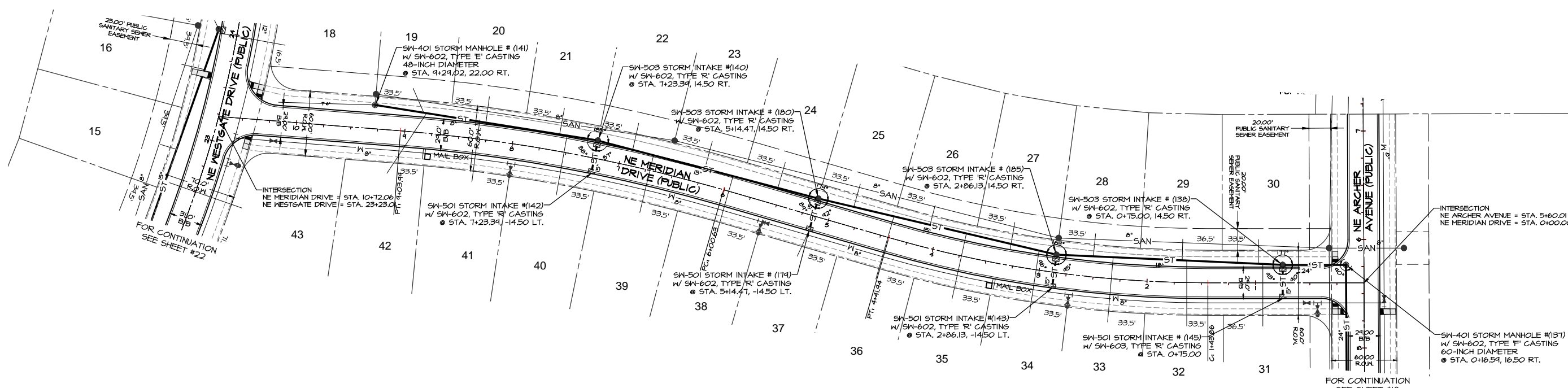


Civil Engineering Consultants, Inc.
 2400 86th Street, Unit 12 · Des Moines, Iowa 50322
 515.276.4884 · Fax: 515.276.7084 · mail@ceclac.com

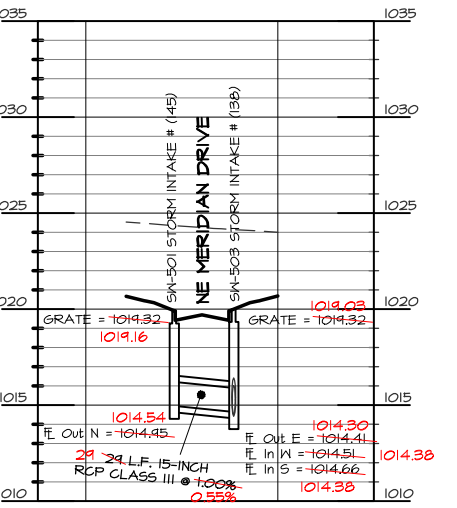
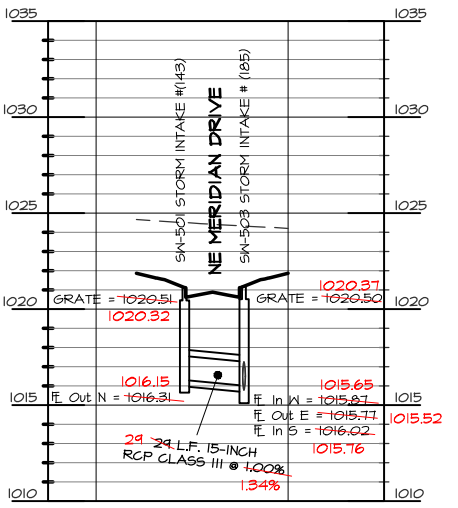
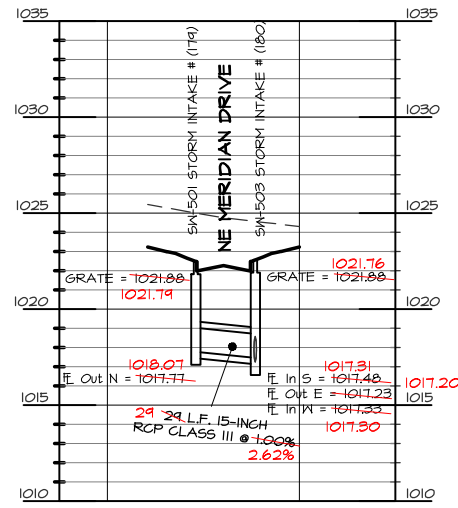
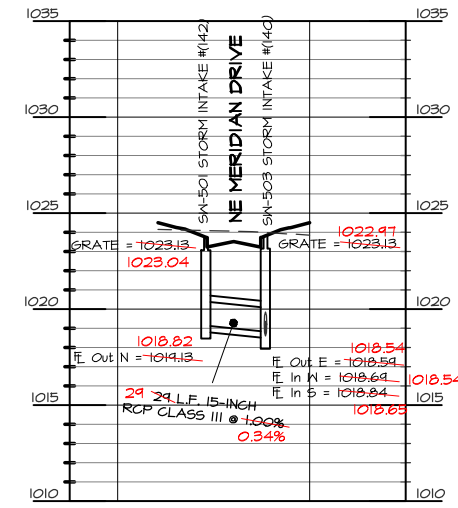
SANITARY SEWER - PLAN & PROFILE
 PRAIRIE CROSSING, WAUKEE, IOWA
 ALICE'S L.C., 4949 WESTOWN PARKWAY, SUITE 200, WEST DES MOINES, IOWA 50266

E-6704

Q:\E-FILES\6000\E6704.DWG AS-BUILT\E6704 CD STORM AS-BUILT.dwg, 6/17/2014 8:48:32 AM, DWG To PDF.pc3



- NOTES**
- ALL CONSTRUCTION (PUBLIC & PRIVATE) SHALL BE IN ACCORDANCE WITH THE IOWA STANDARD SPECIFICATIONS FOR PUBLIC IMPROVEMENTS IN EFFECT AT THE TIME OF CONSTRUCTION. CURRENT SPECIFICATIONS ARE AVAILABLE ONLINE AT: WWW.IOWAENGINEERING.COM/PDF/SPEC/STANDARD_SPEC_2005A.PDF (SEE ALSO NOTE #8)
 - CONTRACTOR SHALL ARRANGE FOR TESTING AND INSPECTION AND NOTIFY THE FOLLOWING AT LEAST ONE WEEK PRIOR TO BEGINNING CONSTRUCTION:
 - CITY OF WAUKEE ENGINEERING DEPARTMENT,
 - ALICE'S ROAD, L.C.,
 - CIVIL ENGINEERS CONSULTANTS, INC.,
 - IOWA ONE-CALL
 - THE LOCATION OF EXISTING FACILITIES AND APPURTENANCES SHOWN ON THIS PLAN ARE BASED ON AVAILABLE INFORMATION WITHOUT UNCOVERING AND MEASURING TO DETERMINE EXACT FACILITIES LOCATIONS. CIVIL ENGINEERS CONSULTANTS, INC. DOES NOT GUARANTEE THE LOCATION OF EXISTING FACILITIES AS SHOWN, OR THAT ALL EXISTING FACILITIES ARE SHOWN. IT IS THE CONTRACTOR'S RESPONSIBILITY TO CONTACT ALL PUBLIC AND PRIVATE UTILITY PROVIDERS SERVING THIS AREA AND IOWA ONE CALL, TO DETERMINE THE EXTENT AND PRECISE LOCATION OF EXISTING FACILITIES BEFORE CONSTRUCTION BEGINS.
 - THE CONTRACTOR SHALL PROTECT EXISTING ON-SITE FACILITIES FROM DAMAGE RESULTING FROM THE CONTRACTOR'S WORK. IF DAMAGE, BREAKAGE, INTERRUPTION OF SERVICE, ETC. OF EXISTING FACILITIES DOES OCCUR THE CONTRACTOR SHALL IMMEDIATELY CONTACT THE UTILITY'S OWNER.
 - CONTRACTOR SHALL BE RESPONSIBLE FOR RECORDING AS-BUILT LOCATIONS OF ALL STORM SEWER SERVICES AND PROVIDE THIS INFORMATION TO THE ENGINEER. CONTRACTOR SHALL BE RESPONSIBLE FOR REPAIRING ANY FARM TILE DAMAGE DURING CONSTRUCTION AND RECORDING LOCATION OF TILE.
 - A GEOTECHNICAL REPORT FOR THIS PROJECT CAN BE OBTAINED BY CONTACTING THE OWNER.
 - INTAKE & CASTING TYPES LISTED ARE PER THE CURRENT EDITION OF THE IOWA S.J.D.A.S. SPECS.
 - PROVIDE APRON GUARDS & CONCRETE FOOTINGS ON ALL FLARED END SECTIONS. CONTRACTOR SHALL TIE THE LAST THREE PIPE JOINTS AT THE FLARED END SECTION.
 - ALL STORM SEWER TO BE CLEANED AND VIDEO TAPED UPON COMPLETION. PAVEMENT REINFORCEMENT IS REQUIRED WHERE EARTH COVER OVER STORM SEWERS IS LESS THAN 2 FEET.
 - ALL SW-501, SW-503, SW-506, SW-512 AND SW-513 TO BE CAST IN PLACE.



LEGEND

EXISTING/PROPOSED

- PLAT BOUNDARY
- - - SAN 8" SANITARY SEWER & SIZE
- - - ST 18" STORM SEWER & SIZE
- - - W 8" WATER MAIN & SIZE
- MANHOLE
- STORM INTAKE
- ▲ FIRE HYDRANT
- ▽ VALVE
- ▽ FLARED END SECTION

SCALE

50' = 1"

NORTH

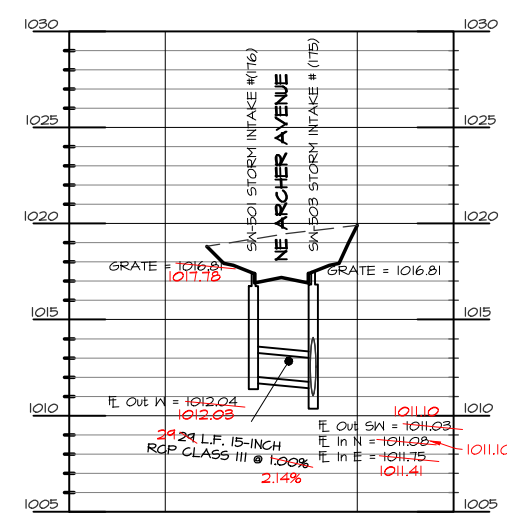
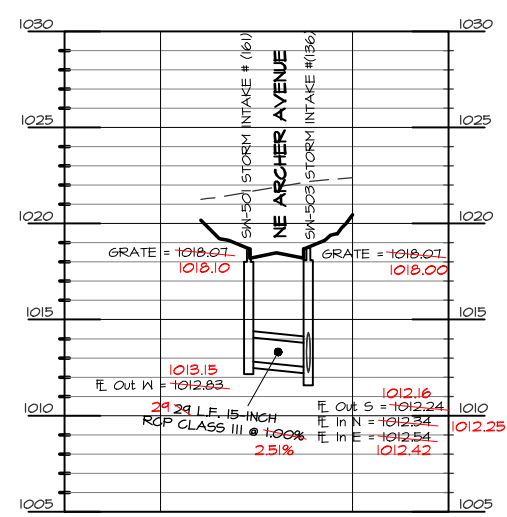
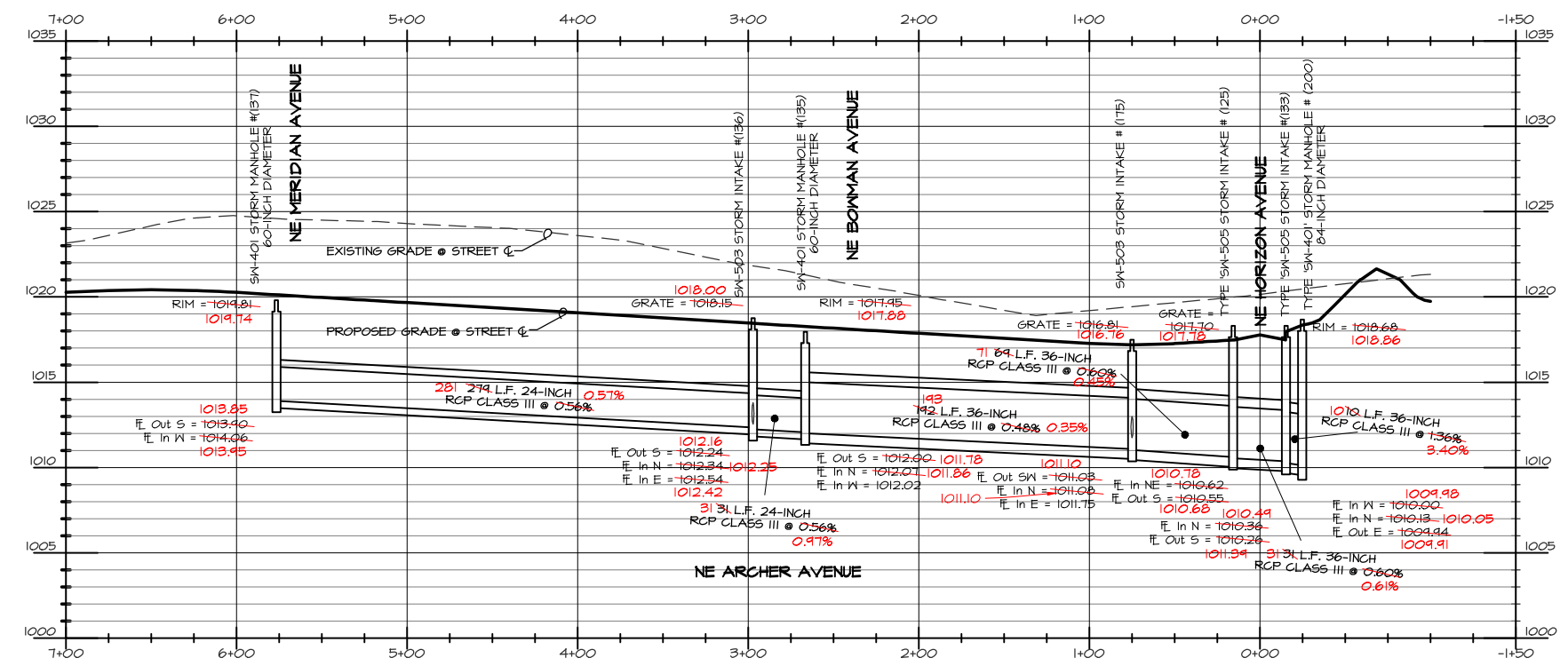
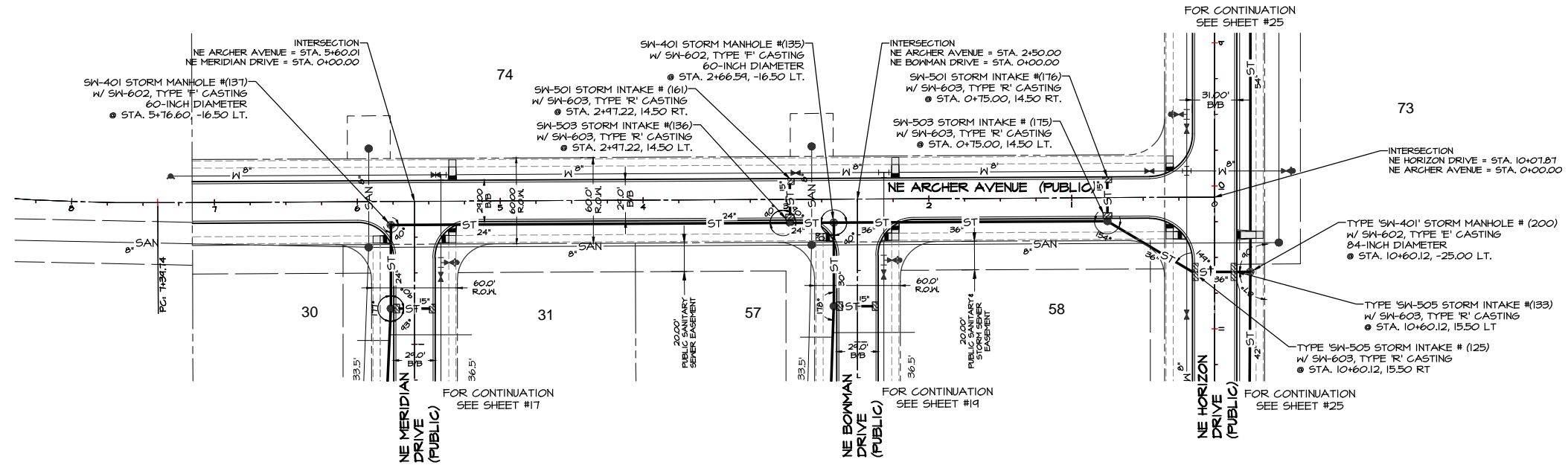
Scale: 1"=50'

DATE: 6-6-2013
 REVISION: 6-28-2013
 T-16-2013
 T-23-2013
 8-02-2013

SHEET

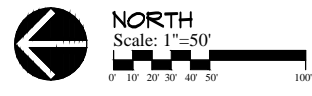
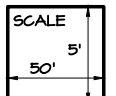
17 OF 48

AS-BUILT: JUNE 17, 2014



LEGEND

- EXISTING/PROPOSED
- PLAT BOUNDARY
 - - - SAN 6" SANITARY SEWER # SIZE
 - - - ST 6" STORM SEWER # SIZE
 - - - W 6" WATER MAIN # SIZE
 - MANHOLE
 - STORM INTAKE
 - ▲ FIRE HYDRANT
 - ▽ VALVE
 - ▽ FLARED END SECTION

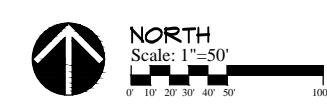
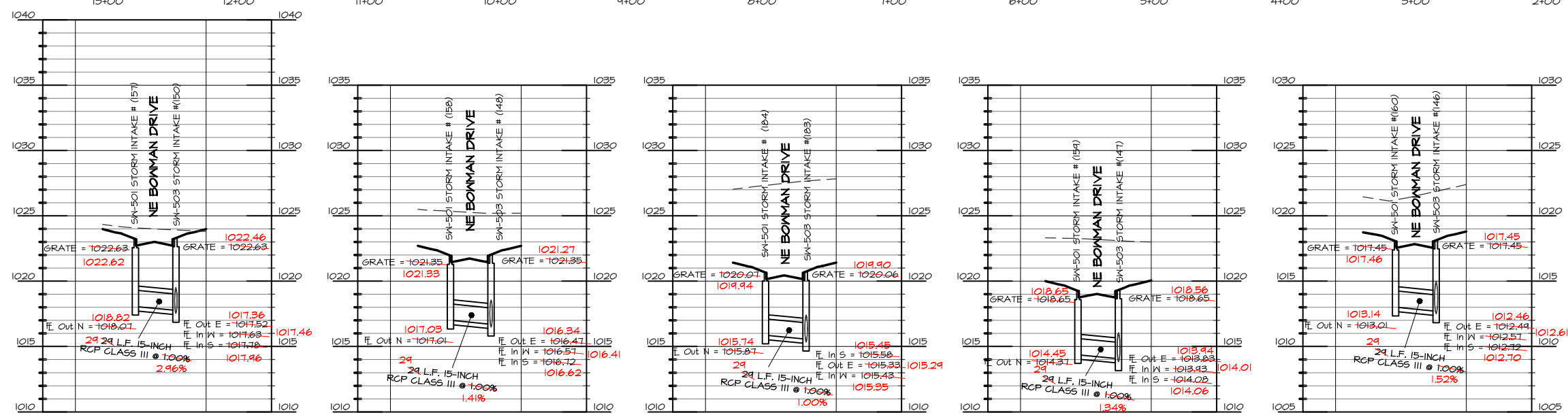
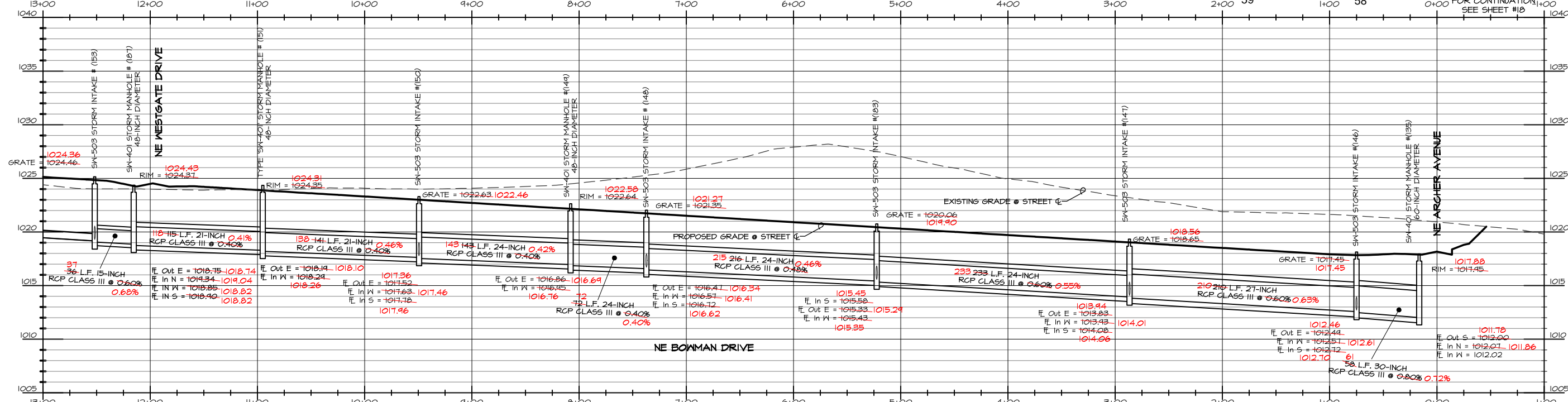
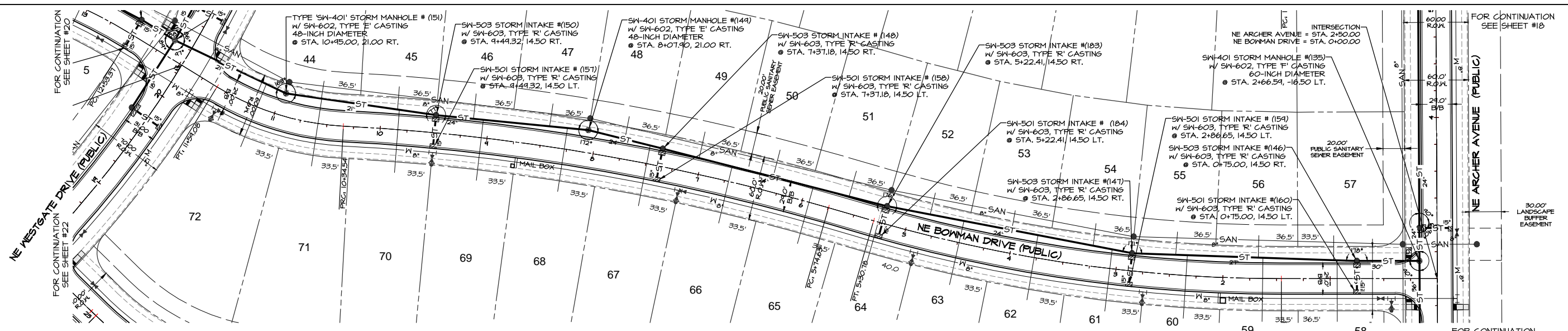


DATE: 6-6-2013
 REVISION: 6-28-2013
 7-16-2013
 7-23-2013
 8-02-2013

SHEET
 18
 OF 48

AS-BUILT: JUNE 17, 2014

Q:\E-FILES\6000\E6704.DWG AS-BUILT.dwg, 6/17/2014 8:47:18 AM, DWG To PDF.pc3



BENCHMARK
 CUT 'X' ON NORTHEAST BOLT ON BASE OF COKE CLOCK
 SOUTHEAST CORNER OF HIGHWAY #6 & ALICE'S ROAD.

ELEVATION-----1034.63

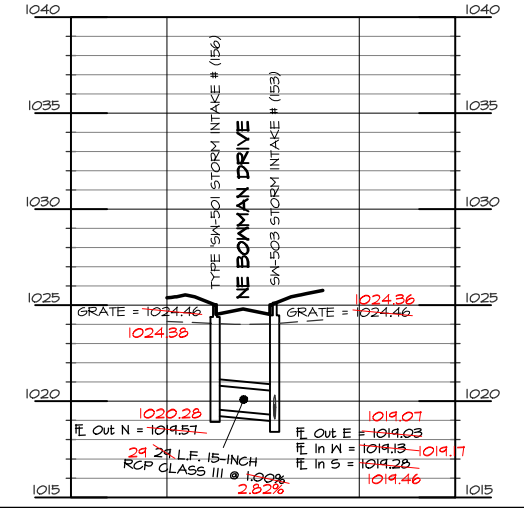
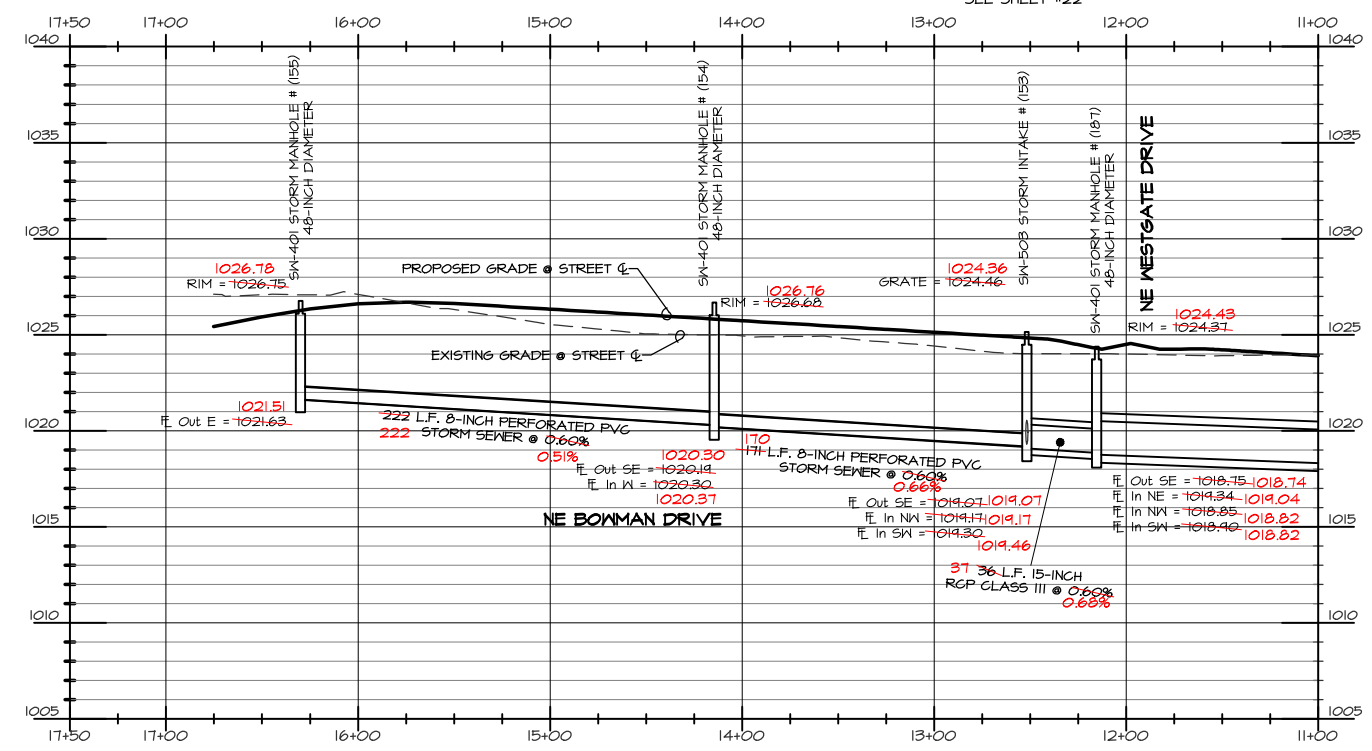
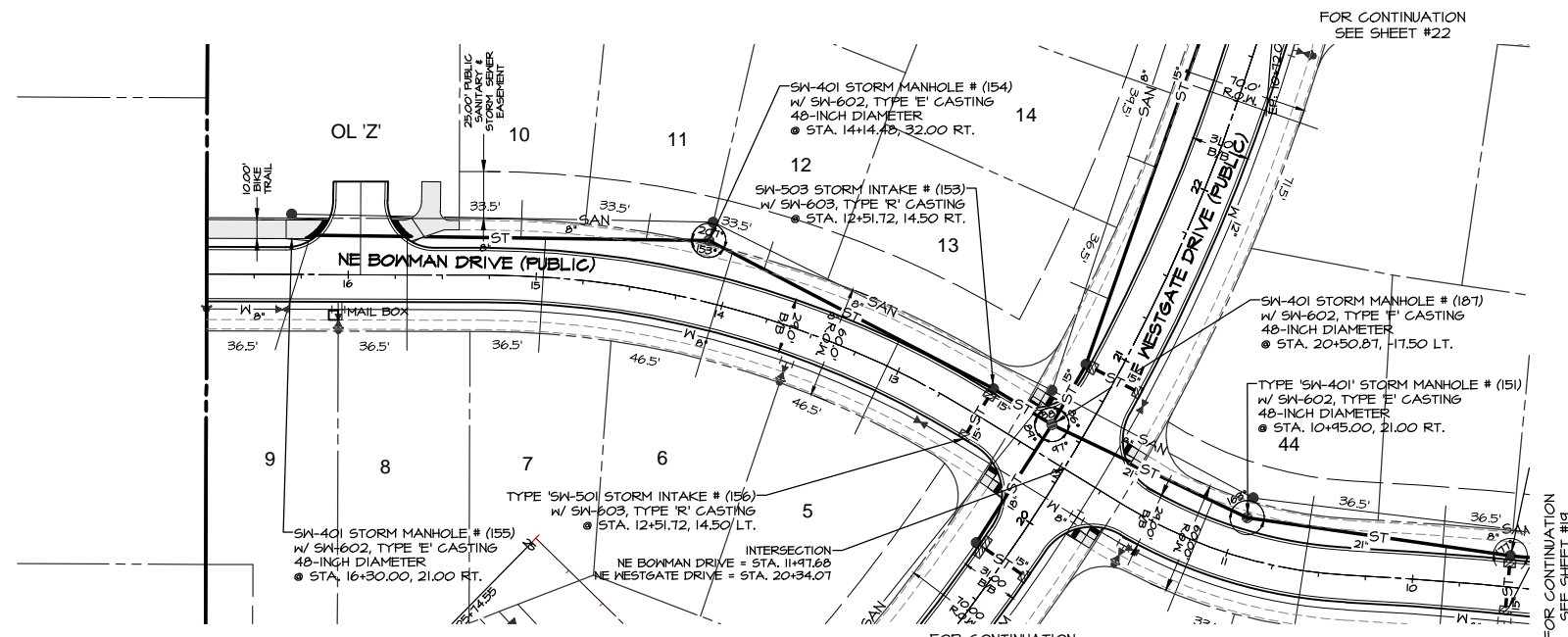
LEGEND

---	EXISTING/PROPOSED	---	FLAT BOUNDARY
---	SAN 6"	---	SANITARY SEWER & SIZE
---	ST 8"	---	STORM SEWER & SIZE
---	W 6"	---	WATER MAIN & SIZE
○	MANHOLE	○	MANHOLE
●	STORM INTAKE	●	STORM INTAKE
▲	FIRE HYDRANT	▲	FIRE HYDRANT
▽	VALVE	▽	VALVE
▽	FLARED END SECTION	▽	FLARED END SECTION

SCALE
 50' 5"

SHEET
 19
 OF 48

DATE: 6-6-2013
 REVISION: 6-28-2013
 7-16-2013
 7-23-2013
 8-02-2013
 AS-BUILT: JUNE 17, 2014



LEGEND

EXISTING/PROPOSED

—	FLAT BOUNDARY
--- SAN 8"	SANITARY SEWER # SIZE
--- ST 10"	STORM SEWER # SIZE
--- W 8"	WATER MAIN # SIZE
○	MANHOLE
●	STORM INTAKE
⊕	FIRE HYDRANT
▽	VALVE
▶	FLARED END SECTION



SCALE

5'

SHEET

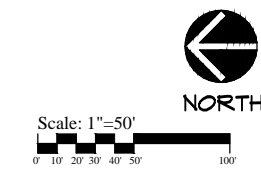
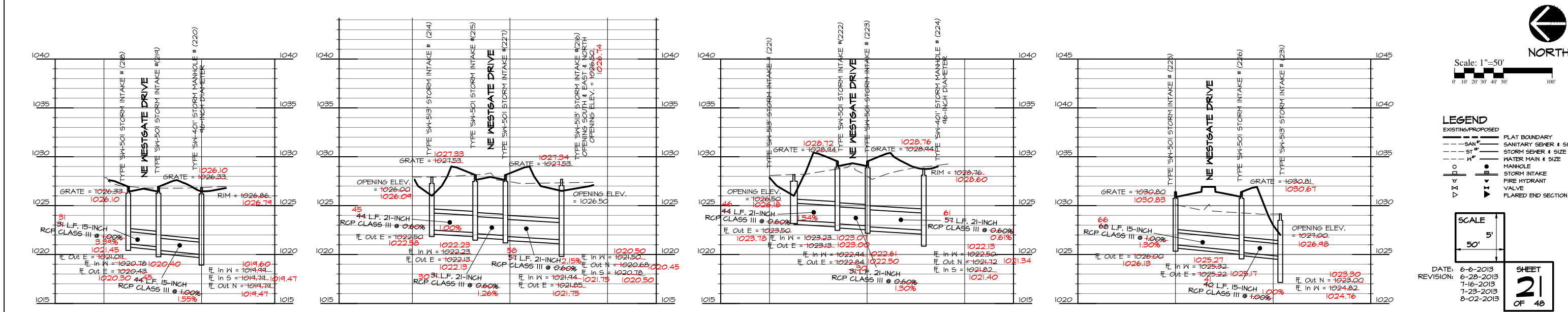
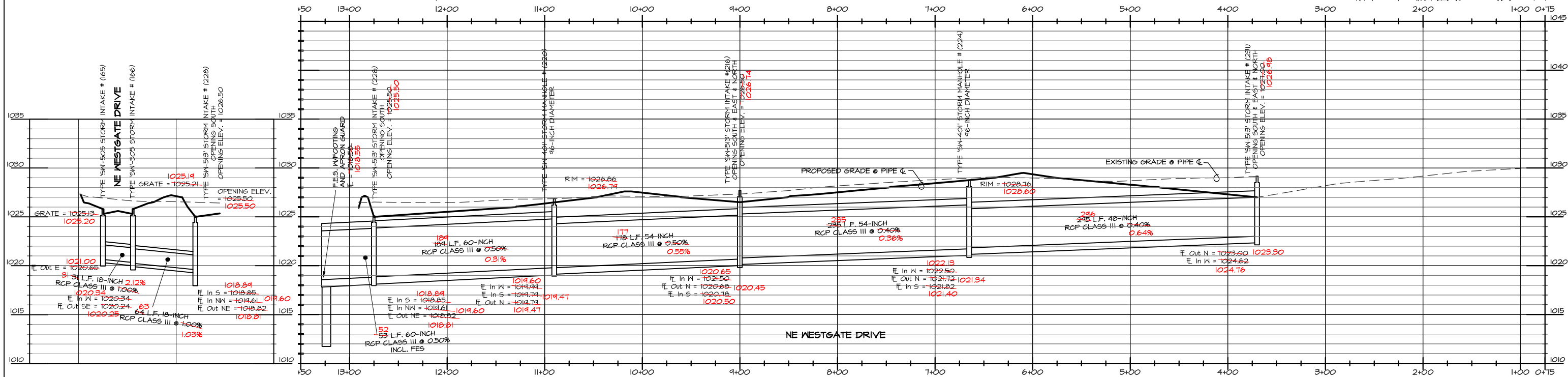
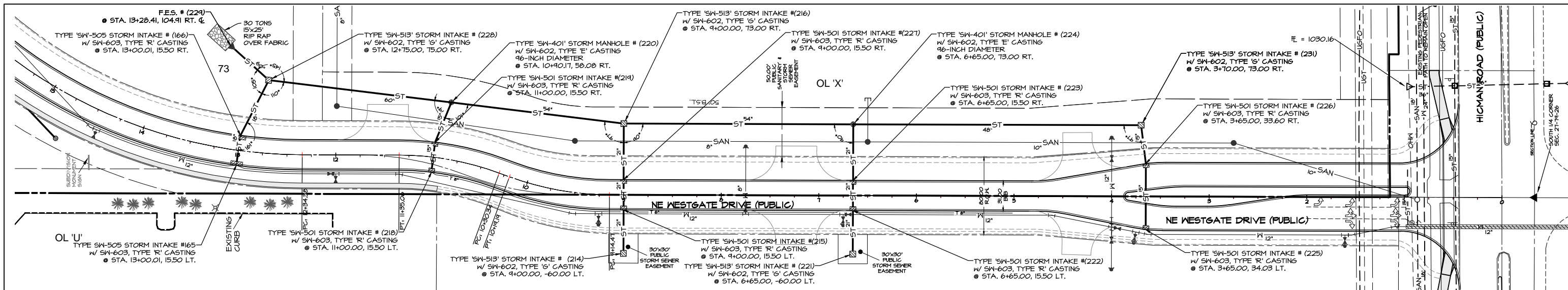
20

OF 48

DATE: 6-6-2013
 REVISION: 6-28-2013
 7-16-2013
 7-23-2013
 8-02-2013

AS-BUILT: JUNE 17, 2014

Q:\E-FILES\E-6000\E6704.DWG AS-BUILT\E6704_CD STORM AS-BUILT.dwg 6/17/2014 8:46:37 AM, DWG To PDF.pc3



LEGEND

—	FLAT BOUNDARY
---	SANITARY SEWER & SIZE
---	STORM SEWER & SIZE
---	WATER MAIN & SIZE
○	MANHOLE
●	STORM INTAKE
▽	FIRE HYDRANT
▽	VALVE
▽	FLARED END SECTION

SCALE

50' 5'

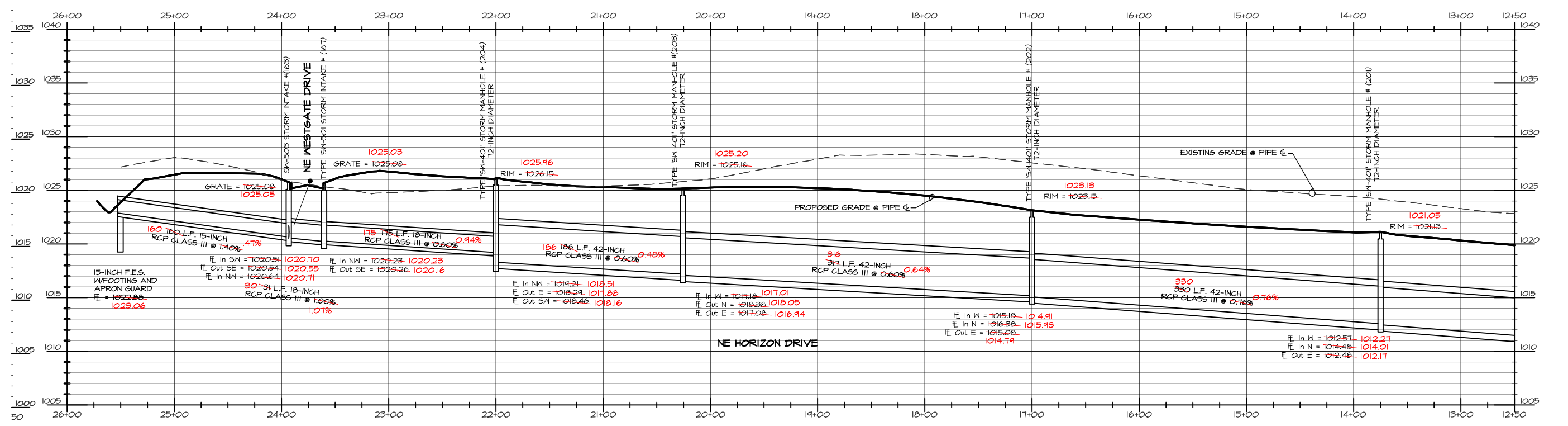
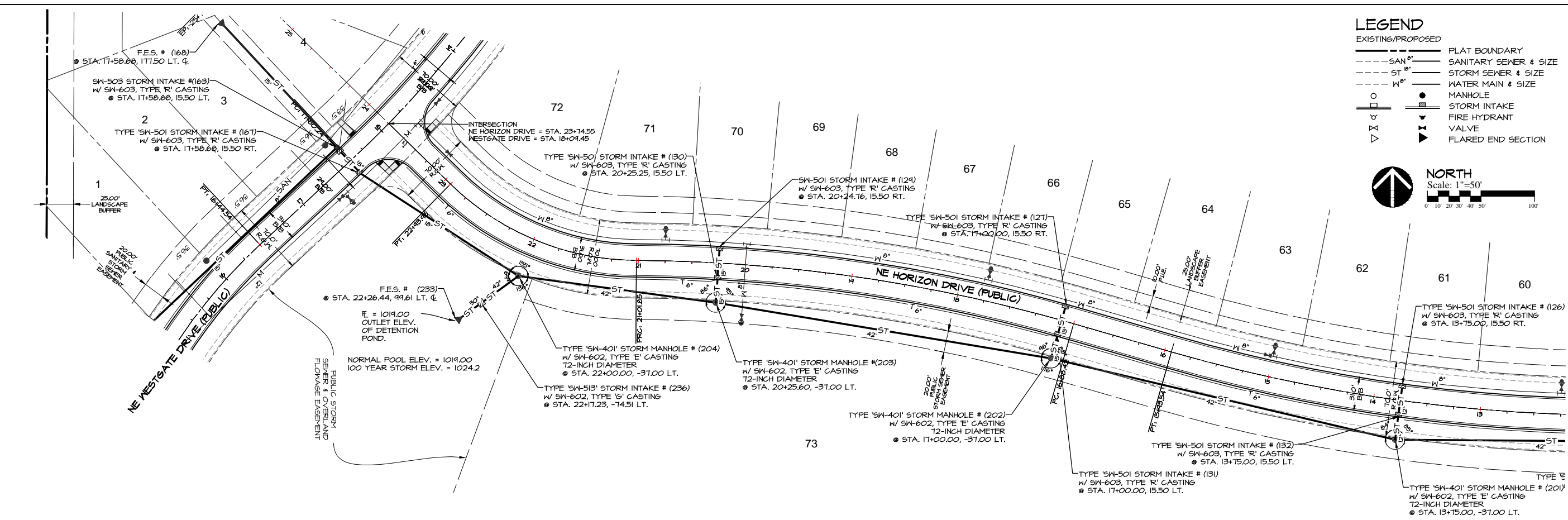
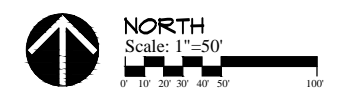
DATE: 6-6-2013
 REVISION: 6-28-2013
 T-16-2013
 T-23-2013
 8-02-2013

SHEET
 21
 OF 48

AS-BUILT: JUNE 17, 2014

LEGEND
 EXISTING/PROPOSED

- PLAT BOUNDARY
- SAN 8" SANITARY SEWER # SIZE
- ST 18" STORM SEWER # SIZE
- W 8" WATER MAIN # SIZE
- MANHOLE
- STORM INTAKE
- FIRE HYDRANT
- VALVE
- ▽ FLARED END SECTION



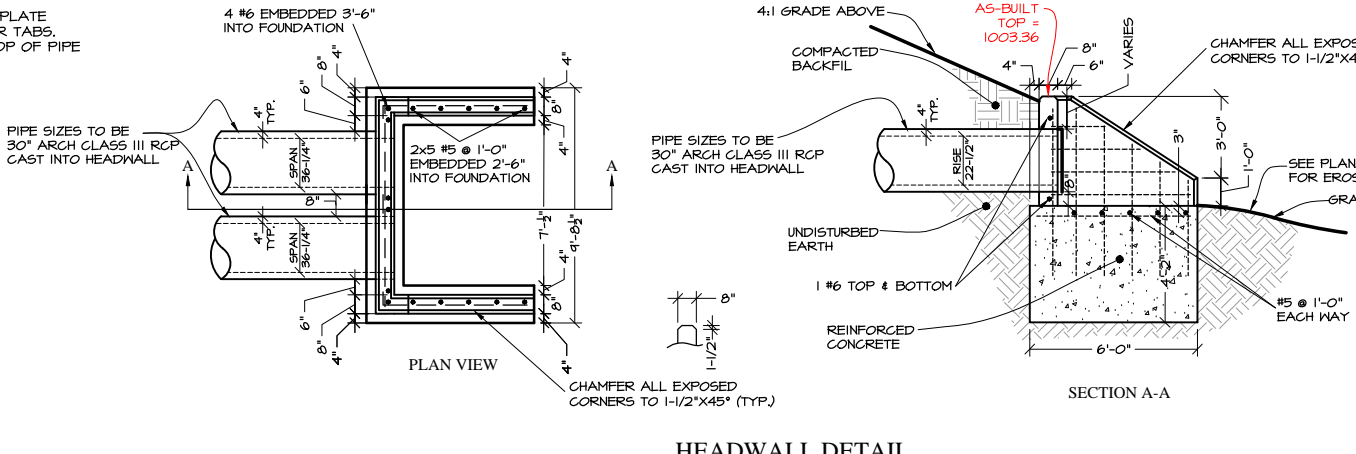
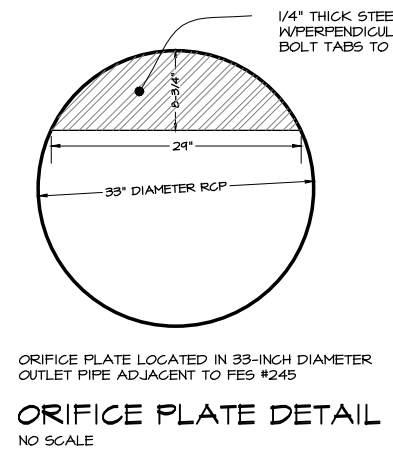
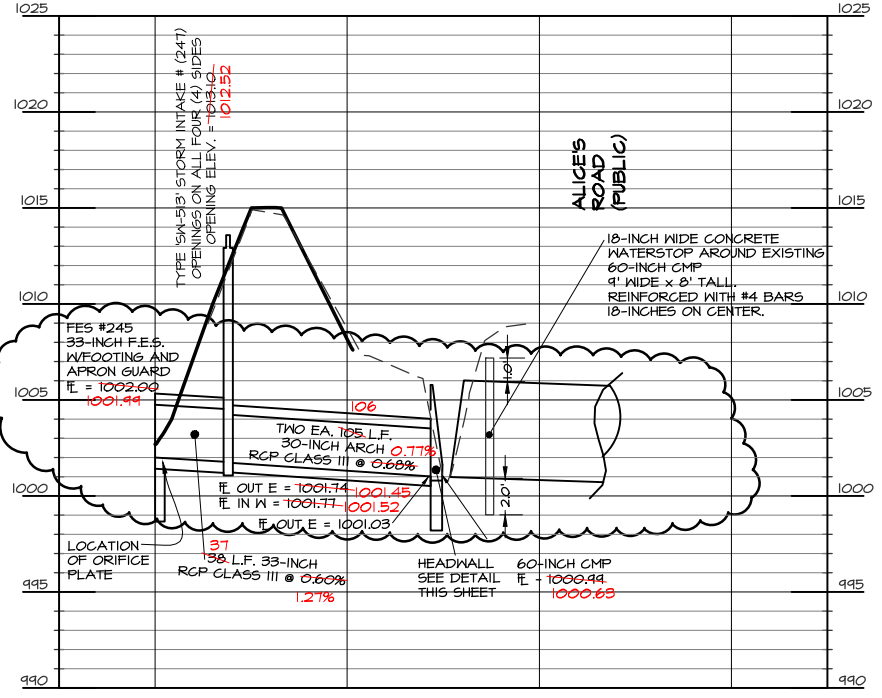
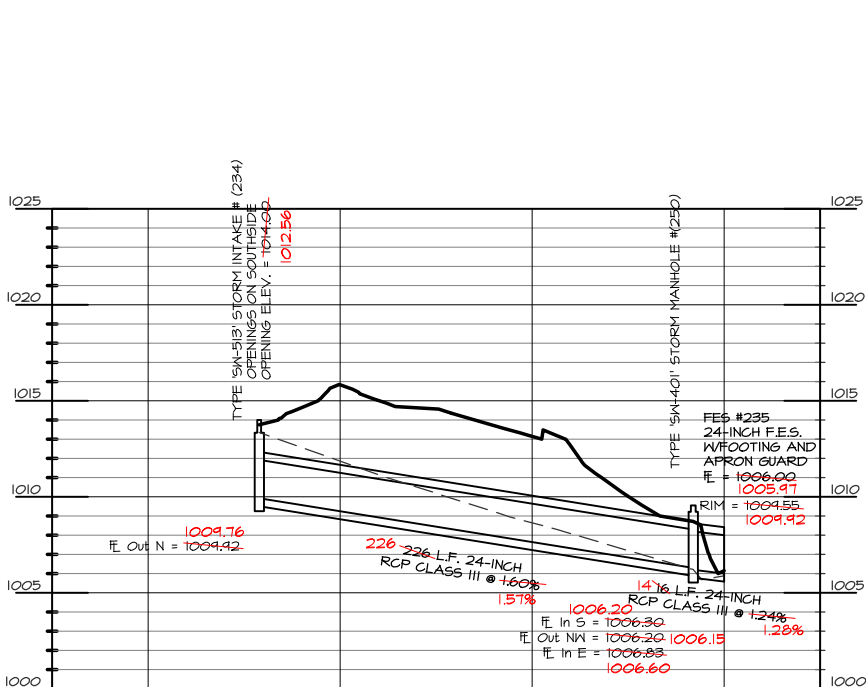
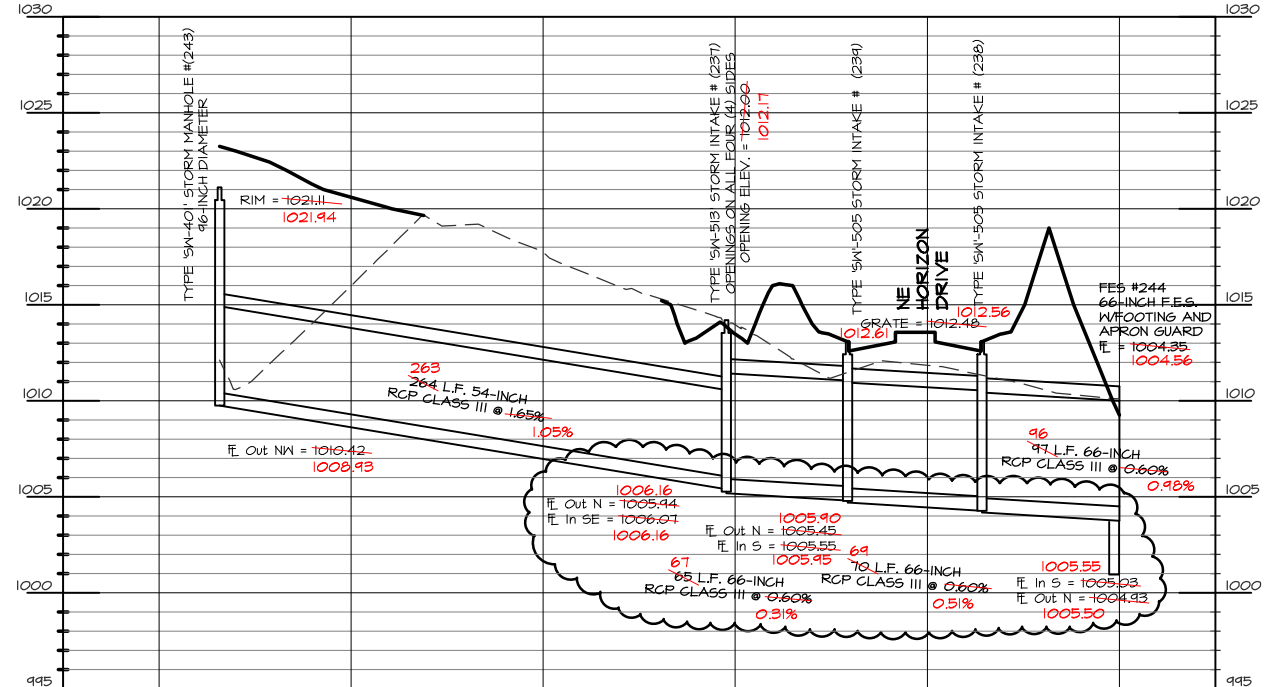
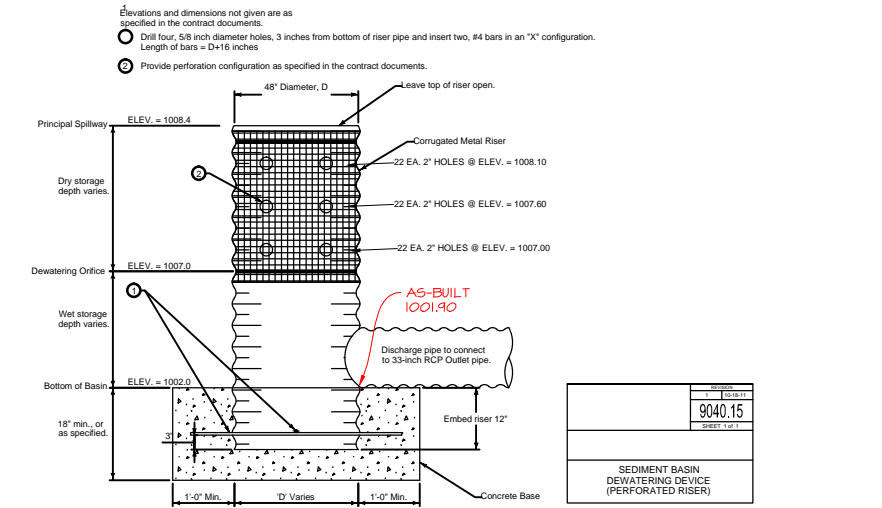
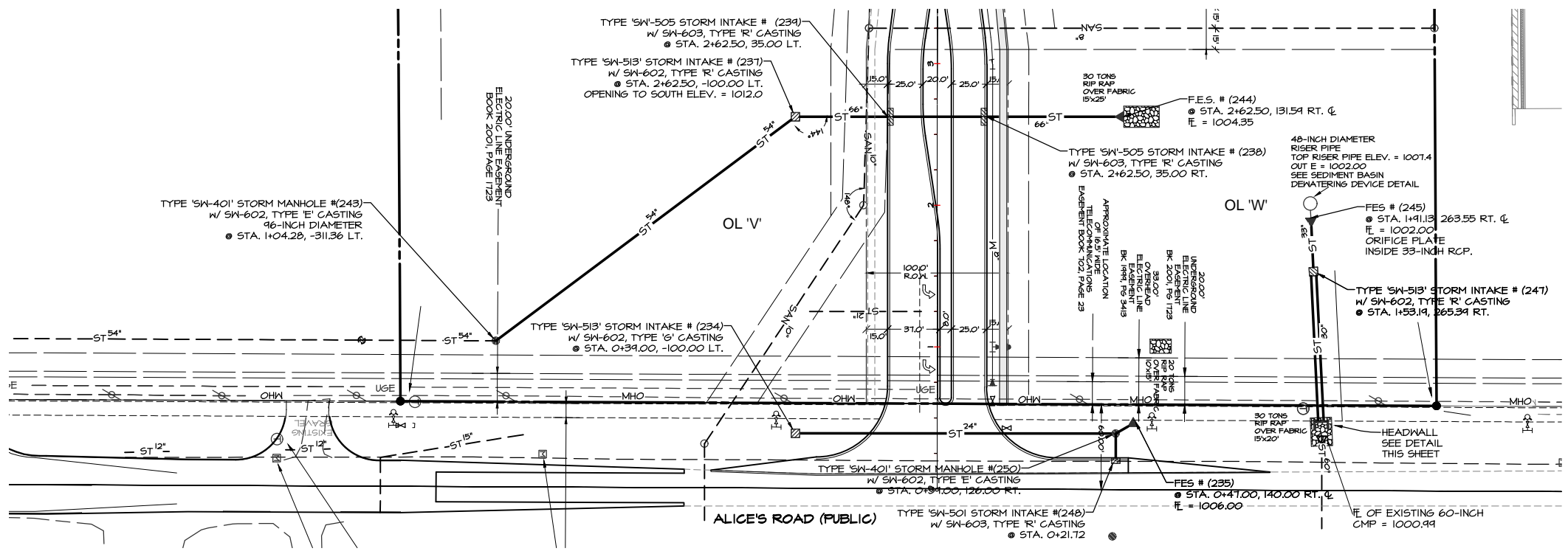
SCALE
 5'
 50'

DATE: 6-6-2013
 REVISION: 6-23-2013
 T-16-2013
 T-23-2013
 8-02-2013

SHEET
23
 OF 48

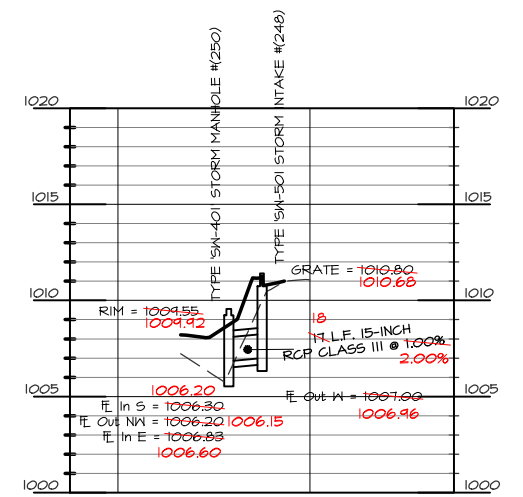
AS-BUILT: JUNE 17, 2014

Q:\E-FILES\6000\E6704\DWG AS-BUILT\E6704_CD STORM AS-BUILT.dwg, 6/17/2014 8:38:19 AM, DWG To PDF.pc3



LEGEND

---	EXISTING/PROPOSED	---	FLAT BOUNDARY
---	SAN 8"	---	SANITARY SEWER & SIZE
---	ST 18"	---	STORM SEWER & SIZE
---	W 8"	---	WATER MAIN & SIZE
○	MANHOLE	●	STORM INTAKE
○	FIRE HYDRANT	▲	VALVE
▽	FLARED END SECTION		



SCALE
50' 5'

NORTH
Scale: 1"=50'

DATE: 6-6-2013
REVISION: 6-23-2013
7-16-2013
7-23-2013
8-02-2013
8-08-2013
8-28-2013
10-17-2013

SHEET
26
OF 48

AS-BUILT: JUNE 17, 2014