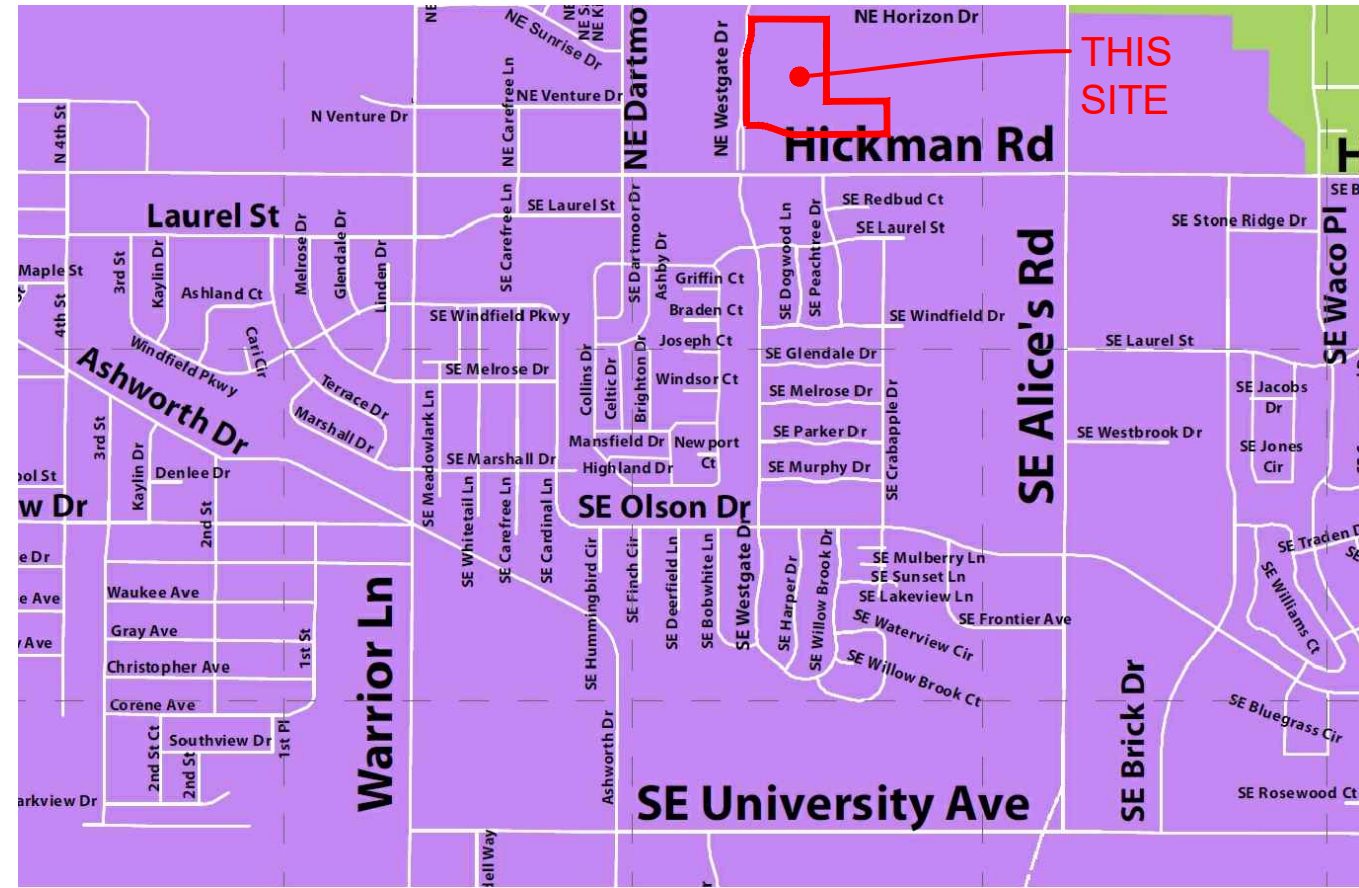


AS-BUILT CONSTRUCTION DRAWINGS PRAIRIE CROSSING PLAT 8 WAUKEE, IOWA

ALICES, L.C., KNAPP PROPERTIES INC. 5000 WESTOWN PARKWAY, SUITE 400 WEST DES MOINES, IA 50266-5921



VICINITY SKETCH

PROPERTY OWNER:
ALICES, L.C.,
KNAPP PROPERTIES INC.,
5000 WESTOWN PARKWAY, STE 400
WEST DES MOINES, IA 50266-5921

DEVELOPER:
ALICES, L.C.,
KNAPP PROPERTIES INC.,
5000 WESTOWN PARKWAY, STE 400
WEST DES MOINES, IA 50266-5921

PROJECT MANAGER:
PAUL CLAUSEN, PE
CIVIL ENGINEERING CONSULTANTS
2400 66TH STREET, #12
DES MOINES, IOWA 50322
PH. 515-276-4884 EXT. #217
EMAIL: CLAUSEN@CECLAC.COM

Sheet List Table

SHEET NUMBER	SHEET TITLE
01	COVER SHEET *
02	DETAIL SHEET
03	SANITARY SEWER SERVICES - LOT 1 & OUTLOT 2' *
04	STORM SEWER PLAN & PROFILE *
05	WATER MAIN PLAN & PROFILE *
06	PAVING PLAN & PROFILE
07	PAVING DETAIL SHEET *
08	GRADING PLAN *
09	SNOWPLOT NOTES
10	STORM WATER POLLUTION PREVENTION PLAN

ZONING / LAND USE:
C1-B COMMUNITY AND HIGHWAY SERVICE
COMMERCIAL DISTRICT

BULK REGULATIONS
C1-B
FRONT YARD SETBACK = 50 FEET
SIDE YARD SETBACK = 20 FEET
SIDE YARD" SETBACK = 40 FEET / IF ADJACENT
TO "R" DISTRICT
REAR YARD SETBACK = 50 FEET
MAXIMUM HEIGHT = 50 FEET (SEE CODE)
MAXIMUM STORIES = 3 STORIES

LEGAL DESCRIPTION:
OUTLOT 2', PRAIRIE CROSSING PLAT 7, AN OFFICIAL PLAT, CITY OF
WAUKEE, DALLAS COUNTY, IOWA, RECORDED IN BOOK 2019, PAGE 148,
SAID PARCEL CONTAINS 13.10 ACRES MORE OR LESS.

UTILITY CONTACTS
SANITARY SEWER - WAUKEE PUBLIC WORKS DEPARTMENT (515-478-7420)
WATER MAIN - WAUKEE PUBLIC WORKS DEPARTMENT (515-478-7420)
STORM SEWER - WAUKEE PUBLIC WORKS DEPARTMENT (515-478-7420)
NATURAL GAS UTILITY - WAUKEE PUBLIC WORKS DEPARTMENT (515-478-7420)
ELECTRIC - MID AMERICAN ENERGY (515-252-6597)

QUANTITIES
SANITARY SEWER
2 EA SERVICES

WATER MAIN
30 LF. 6-INCH WATER MAIN
310 LF. 8-INCH WATER MAIN
1 EA. 8-INCH VALVE
1 EA. 8-INCH VALVE
1 EA. HYDRANT, TEE & 6-INCH VALVE
1 EA. 8"X8"X6" TEE
2 EA. BLOWOFF HYDRANT
4 EA. 22.5" MECHANICAL BENDS

QUANTITIES
STORM SEWER
74 LF. 15-INCH RCP CLASS III
75 LF. 18-INCH RCP CLASS III
31 LF. 24-INCH RCP CLASS III
1 EA. 5K-501 INTAKE W/ 5K-603 'R' GRATE
1 EA. 5K-503 INTAKE W/ 5K-602 'E' CASTING & 5K-603 'R' GRATE
1 EA. 5K-512 INTAKE W/ 5K-604 TYPE 5 GRATE
1 EA. 18-INCH FLARED END SECTION
1 EA. 24-INCH FLARED END SECTION
11 TN CLASS 'E' REVETMENT STONE OVER ENGINEERING FABRIC

PAVING
605 S.Y. 7-INCH NON-REINFORCED P.C.C.
110 S.Y. 8-INCH NON-REINFORCED P.C.C.
1154 S.Y. 12" SUBGRADE PREP.
175 LF. 6-INCH SUBDRAIN
1 EA. TYPE A-2 CLEANOUT
2 EA. 6-INCH P.C.C. SIDEWALK RAMPS

PROPOSED CONSTRUCTION SCHEDULE

GRADING ACTIVITIES: OCTOBER, 2020
UTILITY PLACEMENT: NOVEMBER 2020
PAVEMENT: APRIL, 2021
PUNCH LIST ITEMS: MAY, 2021

GENERAL NOTES

- ALL CONSTRUCTION (PUBLIC & PRIVATE) SHALL BE IN ACCORDANCE WITH THE CURRENT EDITION OF THE CITY OF WAUKEE STANDARD SPECIFICATIONS AND THE CURRENT EDITION OF SUDAS STANDARD SPECIFICATIONS. CONTRACTOR SHALL ARRANGE FOR TESTING AND INSPECTION AND NOTIFY THE FOLLOWING AT LEAST ONE WEEK PRIOR TO BEGINNING CONSTRUCTION.
 - CITY OF WAUKEE PUBLIC WORKS DEPARTMENT.
 - ALICES, L.C.
 - CIVIL ENGINEERING CONSULTANTS, INC.
 - IOWA ONE-CALL
 - IOWA DEPARTMENT OF TRANSPORTATION.
- THE CONTRACTOR IS RESPONSIBLE FOR SETTING UP A PRECONSTRUCTION MEETING WITH THE CITY OF WAUKEE ENGINEERING DEPARTMENT AT LEAST ONE WEEK PRIOR TO CONSTRUCTION.
- ALL TESTING IS TO BE COMPLETED PER CITY OF WAUKEE STANDARD SPECIFICATIONS. ALL TESTING IS TO BE WITNESSED BY THE CITY OF WAUKEE.
- THE CONTRACTOR IS TO PROVIDE SUBMITTALS OF CONSTRUCTION MATERIALS TO THE CITY OF WAUKEE ENGINEERING DEPARTMENT PRIOR TO CONSTRUCTION.
- THE LOCATION OF EXISTING FACILITIES AND APPURTENANCES SHOWN ON THIS PLAN ARE BASED ON AVAILABLE INFORMATION WITHOUT UNCOVERING AND MEASURING TO DETERMINE EXACT FACILITIES LOCATIONS. CIVIL ENGINEERING CONSULTANTS, INC. DOES NOT GUARANTEE THE LOCATION OF EXISTING FACILITIES AS SHOWN, OR THAT ALL EXISTING FACILITIES ARE SHOWN. IT IS THE CONTRACTOR'S RESPONSIBILITY TO CONTACT ALL PUBLIC AND PRIVATE UTILITY PROVIDERS SERVING THIS AREA, AND IOWA ONE CALL, TO DETERMINE THE EXTENT AND PRECISE LOCATION OF EXISTING FACILITIES BEFORE CONSTRUCTION BEGINS.
- THE CONTRACTOR SHALL PROTECT EXISTING ON-SITE FACILITIES FROM DAMAGE RESULTING FROM THE CONTRACTOR'S WORK. IF DAMAGE, BREAKAGE, INTERRUPTION OF SERVICE, ETC. OF EXISTING FACILITIES DOES OCCUR THE CONTRACTOR SHALL IMMEDIATELY CONTACT THE UTILITY'S OWNER.
- CONTRACTOR SHALL BE RESPONSIBLE FOR REPAIRING ANY FARM TILE DAMAGE DURING CONSTRUCTION AND RECORDING LOCATION OF TILE.
- ANY CHANGES TO THE CONSTRUCTION DRAWINGS DURING CONSTRUCTION SHALL BE APPROVED IN WRITING BY THE CITY OF WAUKEE ENGINEERING DEPARTMENT.
- THE CONTRACTOR IS RESPONSIBLE FOR ANY CHANGES MADE DURING CONSTRUCTION THAT HAVE NOT BEEN APPROVED IN WRITING BY THE CITY OF WAUKEE ENGINEERING DEPARTMENT.
- THE CONTRACTOR SHALL NOTIFY THE CITY OF WAUKEE ENGINEERING DEPARTMENT 48 HOURS IN ADVANCE OF ANY WORK BEING PERFORMED ON A HOLIDAY OR WEEKEND.
- ALL CONSTRUCTION SHALL BE PERFORMED UNDER THE DIRECT SUPERVISION OF A LICENSED ENGINEER OR LAND SURVEYOR.
- A CERTIFIED AS-BUILT GRADING PLAN SHALL BE PROVIDED TO THE CITY OF WAUKEE PUBLIC WORKS DEPARTMENT PRIOR TO ACCEPTANCE OF PUBLIC IMPROVEMENTS AND APPROVAL OF THE FINAL PLAN.
- ALL WORK SHALL BE CONDUCTED IN ACCORDANCE WITH OSHA CODES AND STANDARDS. NOTHING INDICATED ON THE PLANS SHALL RELIEVE THE CONTRACTOR FROM COMPLYING WITH ALL APPLICABLE SAFETY REGULATIONS.
- THE CONTRACTOR SHALL CONDUCT CLEAN-UP, SURFACE RESTORATION, AND SURFACE REPLACEMENT ACTIVITIES AS CONSTRUCTION PROGRESSES. ALL DEBRIS SPILLED ON THE ROAD OR ON ADJACENT PROPERTY SHALL BE PICKED UP BY THE CONTRACTOR AT THE END OF EACH DAY AND PRIOR TO ANY RAIN EVENT.
- IF DISCREPANCY EXISTS BETWEEN THE DETAILED PLANS AND THE QUANTITIES, THE PLANS SHALL GOVERN.
- THE CITY OF WAUKEE REQUIRES ALL HANDICAP ACCESS RAMPS AND LANDING PADS TO BE CONSTRUCTED AS PART OF THE PUBLIC IMPROVEMENTS (SHADED). SIDEWALKS ARE NOT TO BE CONSTRUCTED AS PART OF THESE IMPROVEMENTS.
- SIDEWALKS AND PEDESTRIAN RAMPS ARE TO BE DESIGNED AND INSTALLED PER THE LATEST PROWAG AND ADA REQUIREMENTS. CURB RAMPS ARE TO BE STAKED OUT BY THE ENGINEER.
- ALL TEMPORARY TRAFFIC CONTROLS MUST BE IN CONFORMANCE WITH THE MANUAL ON UNIFORM TRAFFIC CONTROL DEVICES.
- THE CONTRACTOR SHALL PROTECT AND BACK FILL AROUND UNDERGROUND UTILITIES. BACK FILL SHALL BE IN 6-INCH LAYERS, COMPACTED TO 95% STANDARD PROCTOR DENSITY.
- THE DEVELOPER IS RESPONSIBLE FOR INSTALLING STREET BLADE SIGN AT THE INTERSECTION WITH NE WESTGATE DRIVE.
- ADDITIONAL PEDESTRIAN CROSSINGS TO CROSS NE WESTGATE DRIVE MAY BE REQUIRED AT TIME OF SITE DEVELOPMENT OF THE LOTS ADJACENT TO NE WESTGATE DRIVE.

SANITARY NOTES

- CASTING TYPES ARE FROM SUDAS SPECS.
- CONNECTIONS TO EXISTING MANHOLES ARE TO BE CORE DRILLED AND USE A LINK SEAL.
- CONTRACTOR SHALL BE RESPONSIBLE FOR RECORDING AS-BUILT LOCATIONS OF ALL SANITARY SEWER SERVICES & PROVIDING THIS INFORMATION TO THE ENGINEER.
- THE CONTRACTOR SHALL CLEAN AND VIDEO TAPE THE SANITARY SEWER AT PROJECT COMPLETION. A COPY OF THE VIDEO AND THE REPORT SHALL BE SUBMITTED TO THE CITY OF WAUKEE PRIOR TO THE WORKS DEPARTMENT AFTER THE VIDEO INSPECTION.
- ALL MANHOLES AND MANHOLE CASTINGS MUST BE ROTATED AS REQUIRED TO AVOID MANHOLE CONFLICTS WITH SIDEWALKS.
- ALL SANITARY MANHOLES SHALL BE VACUUM TESTED.

STORM NOTES

- PROVIDE A 3" WIDE CLAY WATER STOP, AN APRON GUARDS & CONCRETE FOOTINGS ON ALL FLARED END SECTIONS. CONTRACTOR SHALL TIE THE LAST THREE PIPE JOINTS AT THE FLARED END SECTION.
- ALL STORM SEWER ARE TO BE CLEANED AND VIDEO TAPED UPON COMPLETION. A COPY OF THE VIDEO SHALL BE PROVIDED TO THE CITY OF WAUKEE PUBLIC WORKS DEPARTMENT.
- PAVEMENT REINFORCEMENT IS REQUIRED WHERE EARTH COVER OVER STORM SEWERS IS LESS THAN 2 FEET.
- STORM SERVICES INSTALLED INTO STORM STRUCTURES MUST BE CORE DRILLED. KEEP THE SERVICE AS MUCH ABOVE THE STRUCTURE FLOW LINE AS POSSIBLE TO AVOID SURCHARGE.
- STORM SEWER SHALL BE OPEN JOINTED.
- ALL STORM SEWER IS TO BE PRIVATE EXCEPT THOSE STORM SEWER MAINS LABELED AS PUBLIC.

WATER NOTES

- FOLLOW WAUKEE STANDARD SPECIFICATIONS FOR PIPE MATERIALS, FIRE HYDRANTS, CURB STOPS, VALVES AND INSTALLATION.
- THE CONTRACTOR SHALL PROTECT AND BACKFILL AROUND ALL UTILITIES AND STRUCTURES. BACKFILL SHALL BE IN ACCORDANCE WITH WAUKEE STANDARD SPECIFICATIONS.
- HYDRANTS, MANHOLE COVERS AND VALVE BOXES SHALL BE SET TO CONFORM TO FINISHED PAVEMENT ELEVATIONS.
- HYDRANTS SHALL BE SET NOT MORE THAN 4 FEET FROM CENTER OF WATER MAIN.
- AN APPROVED SADDLE SHALL BE USED FOR ALL WATER SERVICE TAPS.
- ALL SERVICE LINES SHALL BE WATER MAIN.
 - WHERE SEWERS CROSS OVER OR LESS THAN 18-INCHES BELOW A WATER MAIN.
 - FOR STORM SEWERS FLEXIBLE O-RING-GASKET JOINTS RATED AT 13 PSI OR GREATER SHALL BE UTILIZED UNTIL THE NORMAL DISTANCE FROM THE SEWER TO THE WATER MAIN IS AT LEAST 10'.
 - ONE FULL LENGTH OF WATER MAIN SHALL BE LOCATED 50' THAT BOTH JOINTS AREA AS FAR AS POSSIBLE FROM THE SEWER.
 - THE SEWER MUST BE ADJACENTLY SUPPORTED.
 - A LOW PERMEABLE SOIL SHALL BE USED FOR BACKFILL WITHIN 10' OF THE POINT OF CROSSING.
 - ALL HYDRANTS SHALL HAVE 4" STORZ FITTINGS INCLUDING ANY RELOCATED HYDRANTS.
- ALL STORM SEWER CROSSINGS ABOVE THE WATER MAIN WILL NEED TO INSTALL O-RING JOINT PIPE FOR 20' CENTERED OVER THE WATER MAIN. SEWER CROSSINGS MAY ALSO FOLLOW THE IDNR WATER SUPPLY ENGINEERING SECTION ALTERNATIVE SOLUTIONS TO MEETING REQUIREMENTS FOUND IN SUBPARAGRAPH 561 IAC 43.3(2) "A" (3).

NPDES/SNPPF

- THE OWNER AND/OR CONTRACTOR ARE REQUIRED TO OBTAIN A NPDES PERMIT AND FOLLOW THE REQUIREMENTS OF THE ASSOCIATED STORM WATER POLLUTION PREVENTION PLAN PRIOR TO COMMENCING CONSTRUCTION ACTIVITIES.
- THE OWNER AND/OR CONTRACTOR ARE REQUIRED TO OBTAIN A CITY OF WAUKEE COSESCO PERMIT.

GRADING NOTES

- ONE WEEK PRIOR TO CONSTRUCTION, THE CONTRACTOR SHALL NOTIFY:
 - CITY OF WAUKEE - ENGINEERING DEPARTMENT
 - ALICES, L.C.
 - CIVIL ENGINEERING CONSULTANTS, INC. PHONE: 515.276.4884
 - IOWA ONE-CALL
 - IOWA DEPARTMENT OF TRANSPORTATION.
- ALL CONSTRUCTION SHALL BE IN ACCORDANCE WITH THE CITY OF WAUKEE STANDARD SPECIFICATIONS, CODES, AND POLICES; SUDAS; AND IN ACCORDANCE WITH ALLENDER BUTZKE ENGINEER RECOMMENDATIONS CONTAINED IN GEOTECHNICAL EXPLORATION #FN 171373.
- ALL SPOT ELEVATIONS ARE AT GUTTER, UNLESS NOTED OTHERWISE.
- WAUKEE EROSION AND SEDIMENT CONTROL ORDINANCE APPLICABLE TO THIS SITE. THE LOCATIONS AND DIMENSIONS SHOWN ON THE PLANS FOR EXISTING UTILITIES ARE IN ACCORDANCE WITH AVAILABLE INFORMATION WITHOUT UNCOVERING AND MEASURING. THE ENGINEER DOES NOT GUARANTEE THE ACCURACY OF THIS INFORMATION OR THAT ALL EXISTING UNDERGROUND FACILITIES ARE SHOWN. IT IS THE RESPONSIBILITY OF THE CONTRACTOR TO CONTACT ALL PUBLIC AND/OR PRIVATE UTILITIES SERVING THE AREA TO DETERMINE THE PRESENT EXTENT AND EXACT LOCATION OF THEIR FACILITIES BEFORE BEGINNING WORK.
- THE CONTRACTOR IS REQUIRED TO TAKE DUE PRECAUTIONARY MEASURES TO PROTECT THE UTILITIES OR STRUCTURES AT THE SITE. IT SHALL BE THE CONTRACTOR'S RESPONSIBILITY TO NOTIFY THE OWNERS OF UTILITIES OR STRUCTURES CONCERNED BEFORE STARTING WORK. THE CONTRACTOR SHALL NOTIFY THE PROPER UTILITY IMMEDIATELY UPON BREAKING OR DAMAGE TO ANY UTILITY LINE OF APPURTENANCE, OR THE INTERRUPTION OF THEIR SERVICE. HE SHALL NOTIFY THE PROPER UTILITY INVOLVED. IF EXISTING UTILITY LINES ARE ENCOUNTERED THAT CONFLICT IN LOCATION WITH NEW CONSTRUCTION, THE CONTRACTOR SHALL NOTIFY THE ENGINEER SO THAT THE CONFLICT MAY BE RESOLVED.
- STRIP TOPSOIL FROM ALL AREAS WHICH ARE TO RECEIVE STRUCTURAL FILL.
- AREAS TO RECEIVE FILL TO BE BENCHED.
- PREPARE BOTTOM OF BENCH FOR FILL BY DISCING TO A DEPTH OF 6-INCHES AND COMPACT. ANY LOCALIZED AREAS WHICH CANNOT BE SATISFACTORILY COMPACTED OR WHICH SHOW EVIDENCE OF PUMPING ACTION SHALL BE UNDERCUT AND RECOMPACTED WITH ON-SITE FILL.
- ALL SITE GRADING FILL SHALL BE COMPACTED TO A DENSITY THAT IS NOT LESS THAN 95% STANDARD PROCTOR.
- ALL AREAS WHICH ARE TO RECEIVE PAVING SHALL HAVE THE TOP 12-INCHES DISCED AND RECOMPACTED TO 95% STANDARD PROCTOR DENSITY.
- THE MOISTURE CONTENT OF THE FILL MATERIAL SHALL MATCH URBAN STANDARD SPECIFICATIONS FOR PUBLIC IMPROVEMENTS, BETWEEN 0% AND 4% OVER OPTIMUM MOISTURE.
- MAINTAIN ALL CUT AND FILL AREAS FOR SURFACE DRAINAGE AT ALL TIMES.
- FINAL GRADES SHALL BE WITHIN 0.1' OF PLAN GRADE.
- CONTRACTOR SHALL BE RESPONSIBLE FOR ENSURING ALL TOPSOIL REQUIREMENTS OF GENERAL PERMIT #2 ARE MET.
- BACKFILL TO TOP OF ALL CURBS.

PAVING NOTES

- ALL STREET PAVING WITHIN THE NE WESTGATE DRIVE RIGHT-OF-WAY SHALL BE 8-INCH NON REINFORCED P.C.C.
- ALL OTHER STREET PAVING SHALL BE 6-INCH NON REINFORCED P.C.C.
- SIDEWALK RAMPS WITHIN THE NE WESTGATE DRIVE RIGHT-OF-WAY SHALL BE 6-INCH NON REINFORCED P.C.C.
- ALL STREETS SHALL HAVE 6-INCH CURBS.

GENERAL LEGEND

PROPOSED	EXISTING
FLAT BOUNDARY	LOT LINE
SECTION LINE	SANITARY/STORM MANHOLE
LOT LINE	WATER VALVE
CENTERLINE	FIRE HYDRANT
EASEMENT LINE	STORM SEWER SINGLE INTAKE
FLARED END SECTION	STORM SEWER DOUBLE INTAKE
DRAIN BASIN OR SEDIMENT RISER	STORM SEWER ROUND INTAKE
DRAIN BASIN WITH SOLID GRATE	FLARED END SECTION
WATER VALVE	DECIDUOUS TREE
FIRE HYDRANT ASSEMBLY	CONIFEROUS TREE
BLOW-OFF HYDRANT	SHRUB
SCOUR STOP MAT	POWER POLE
TURF REINFORCEMENT MAT	STREET LIGHT
STORM SEWER WITH SIZE	GUY ANCHOR
WATER SEWER WITH SIZE	ELECTRIC TRANSFORMER
WATER SERVICE	GAS METER
PROPOSED CONTOUR	TELEPHONE RISER
SILT FENCE	SIGN
ADDRESS	UNDERGROUND TELEVISION
RIPRAP	UNDERGROUND ELECTRIC
	UNDERGROUND GAS
	UNDERGROUND FIBER OPTIC
	UNDERGROUND TELEPHONE
	OVERHEAD ELECTRIC
	SANITARY SEWER WITH SIZE
	STORM SEWER WITH SIZE
	WATER MAIN WITH SIZE
	EXISTING CONTOUR
	TREELINE
	B.S.L. BUILDING SETBACK LINE
	P.U.E. PUBLIC UTILITY EASEMENT
	M.O.E. MINIMUM OPENING ELEVATION

SUBMITTAL TABLE

SUBMITTAL DATE	SUBMITTAL NOTES
AUGUST 20, 2020	INITIAL SUBMITTAL
SEPTEMBER 09, 2020	
SEPTEMBER 16, 2020	
SEPTEMBER 30, 2020	
OCTOBER 15, 2020	
JANUARY 27, 2021	REMOVED CROSSWALK MARKINGS
MARCH 25, 2021	ADDED STORM MANHOLE - ST #305

***AS-BUILT DRAWINGS
MAY 24, 2021**

*** THIS LAND SURVEYOR'S CERTIFICATION DOES NOT INCLUDE DESIGN SPOT ELEVATIONS, MINIMUM PROTECTION ELEVATIONS, MINIMUM OPENING ELEVATIONS, MINIMUM BASEMENT ELEVATIONS, DETENTION BASIN & STORM WATER EVENT ELEVATIONS, OR ANY OTHER ITEMS THAT MAY FALL UNDER THE PRACTICE OF A PROFESSIONAL CIVIL ENGINEER. ***

CERTIFICATION

I HEREBY CERTIFY THAT THIS ENGINEERING DOCUMENT WAS PREPARED BY ME OR UNDER MY DIRECT PERSONAL SUPERVISION AND THAT I AM A DULY LICENSED PROFESSIONAL ENGINEER UNDER THE LAWS OF THE STATE OF IOWA.

PAUL J.D. CLAUSEN, IOWA REG. NO. 23772 DATE: MAY 24, 2021
MY LICENSE RENEWAL DATE IS DECEMBER 31, 2021
PAGES OR SHEETS COVERED BY THIS SEAL: ALL SHEETS



Civil Engineering Consultants, Inc.
2400 86th Street Unit 12 Des Moines, Iowa 50322
515.276.4884 Fax: 515.276.7084 mail@ceclac.com



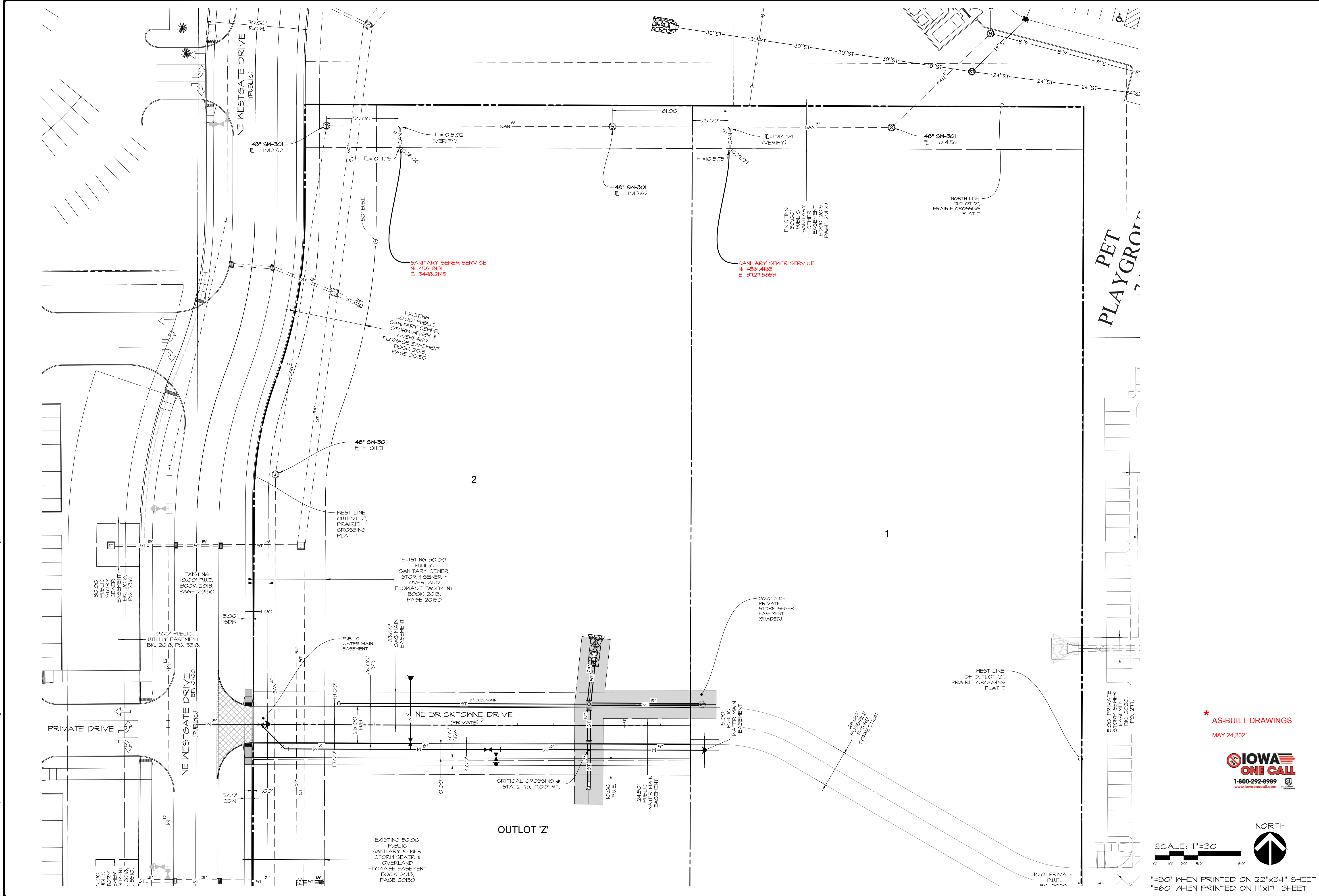
PUBLISH DATE: May 24, 2021

DATE OF SURVEY: MPM
DESIGNED BY: CMI
DRAWN BY:

PRAIRIE CROSSING PLAT 8
WAUKEE, IOWA
COVER SHEET

SHEET 0 OF 10

PLOT BY: MARTIN HILL - 2021/05/24 - q:\FILES\0000\EB932_CD SANITARY SERVICE\ASB.dwg | - ANSI EXPAND D (84.00 X 22.00 INCHES) - AUTOCAD PLOT (GENERAL DOCUMENTATION)PC3 - CEC-XEB TESTCIB - PLOT SCALE = 1:1



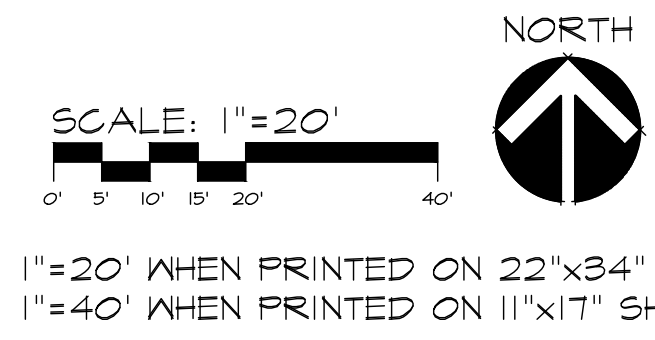
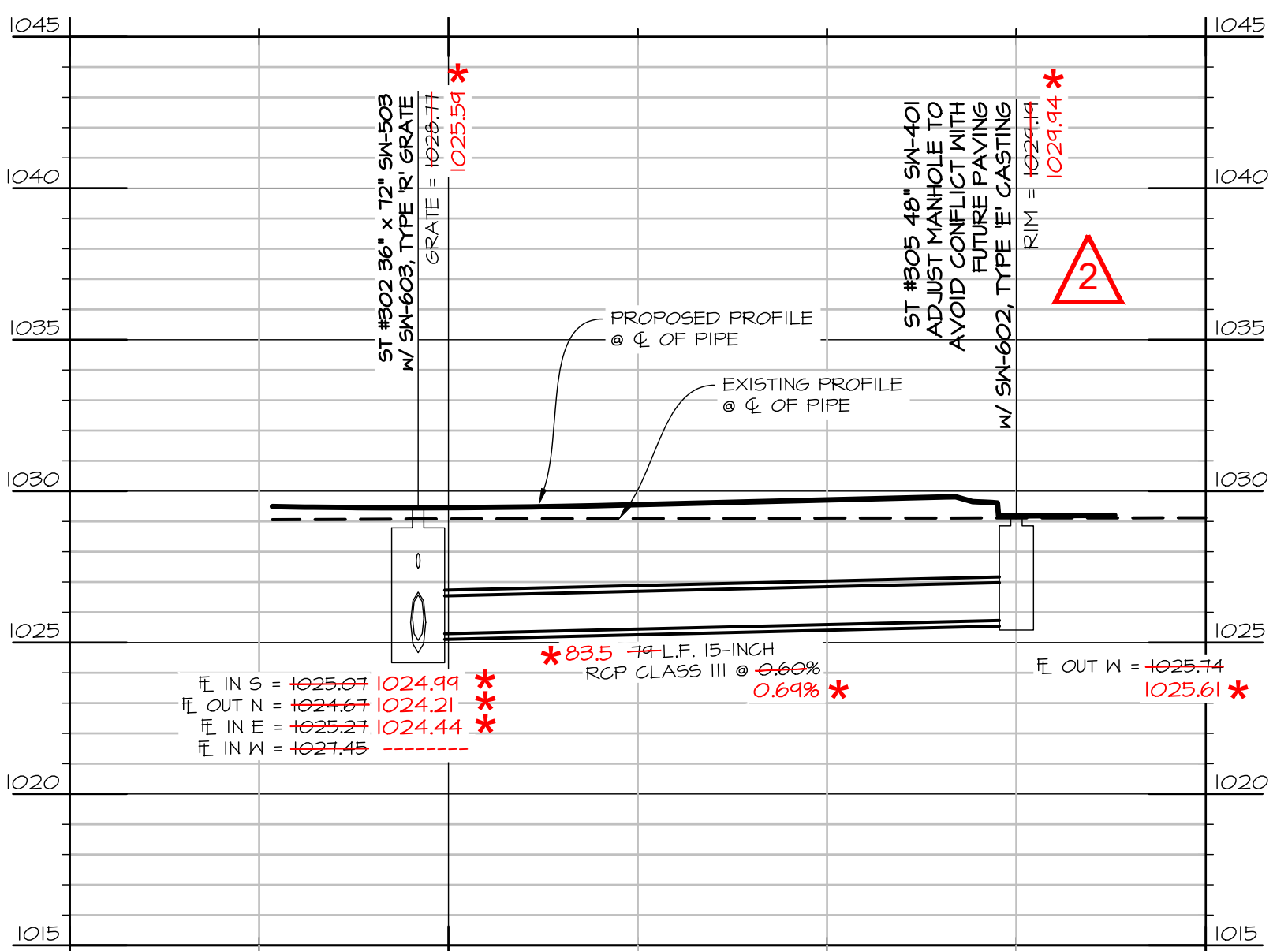
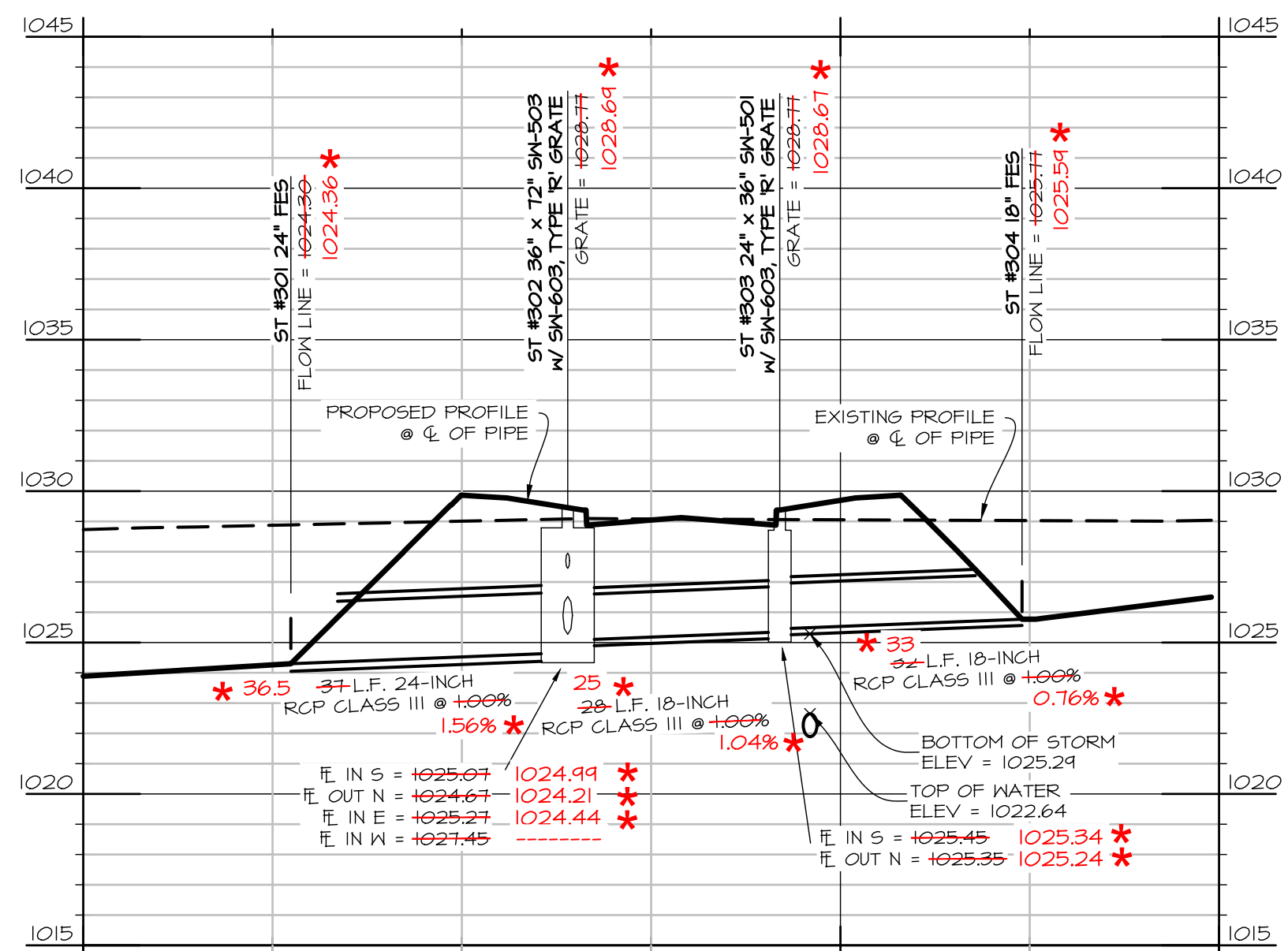
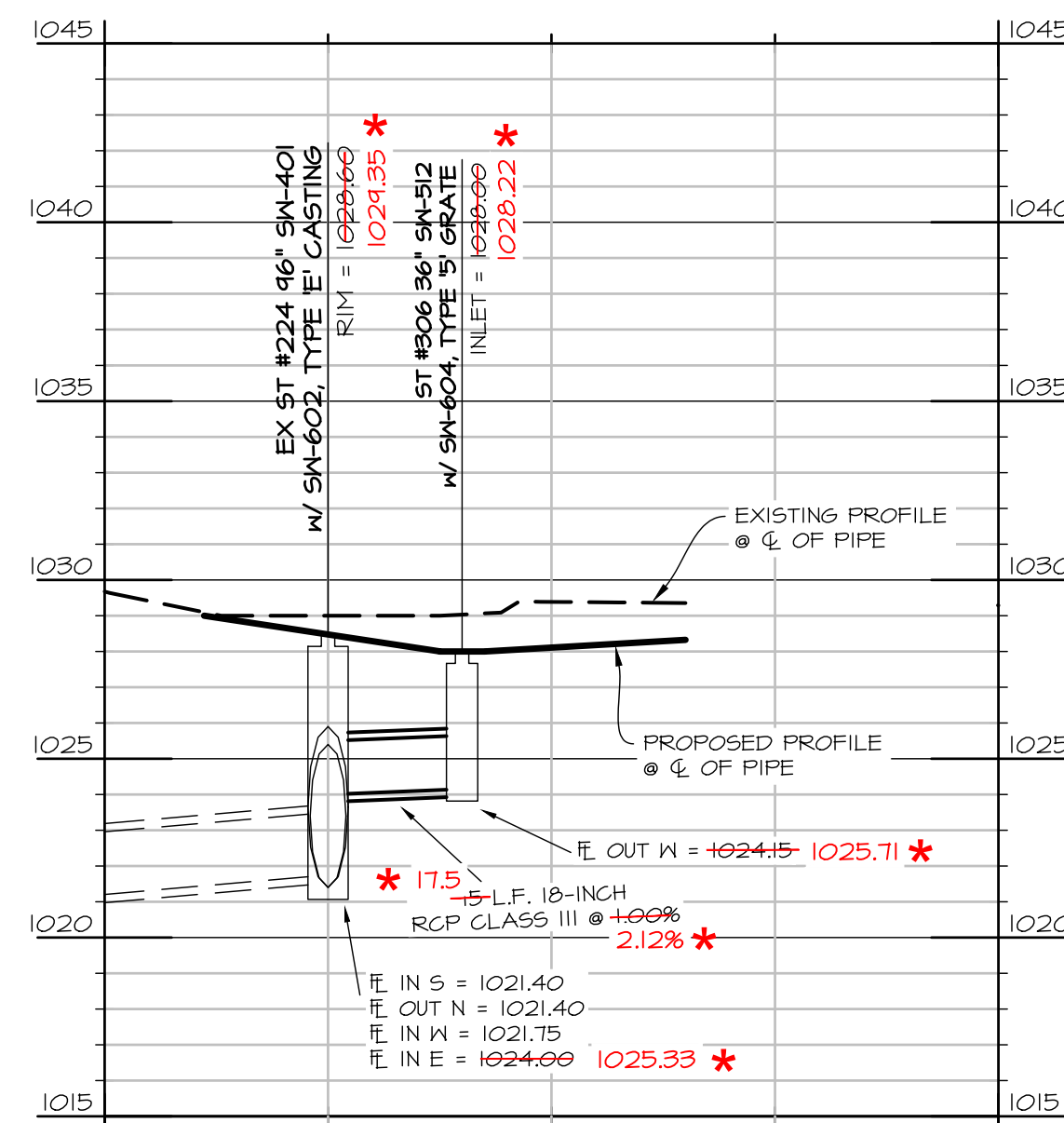
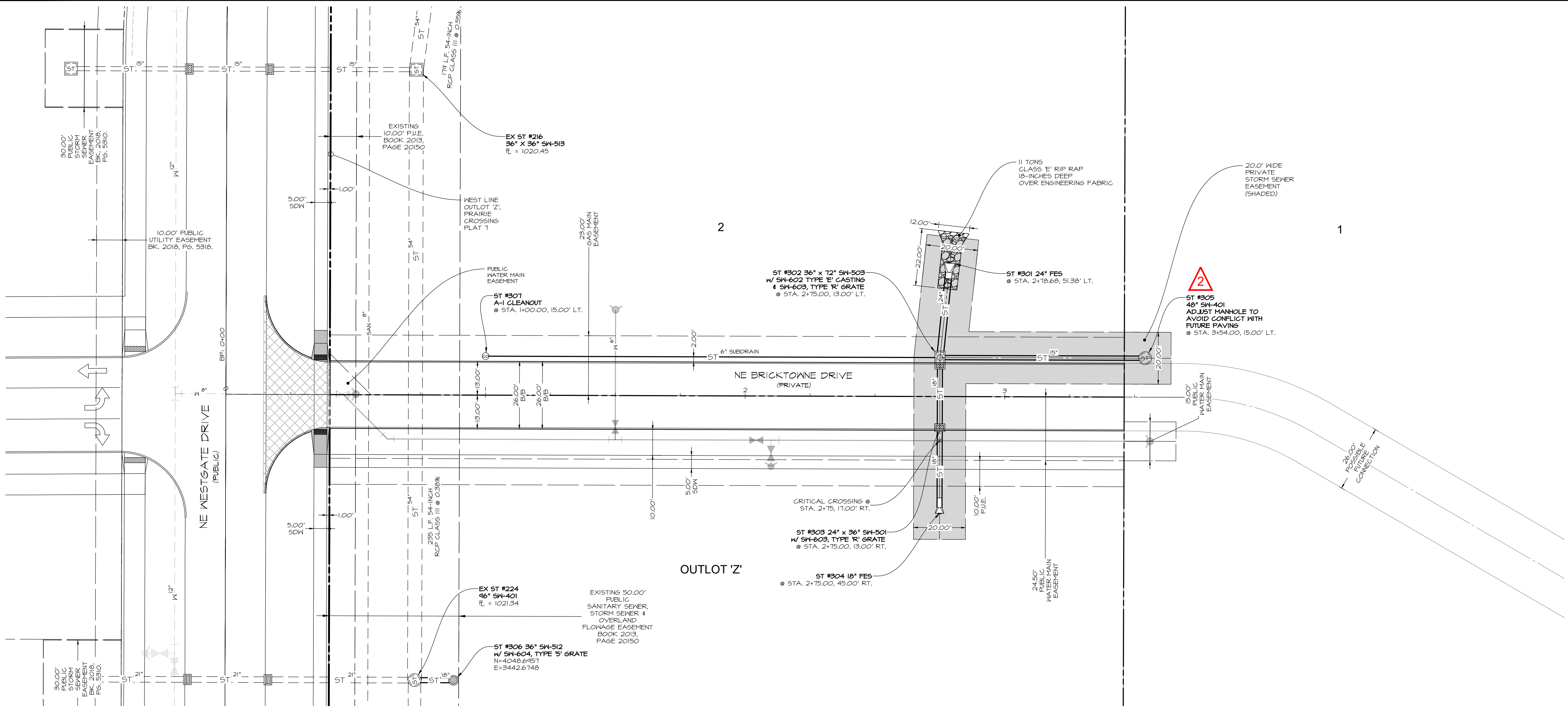
* AS-BUILT DRAWINGS
MAY 24, 2021



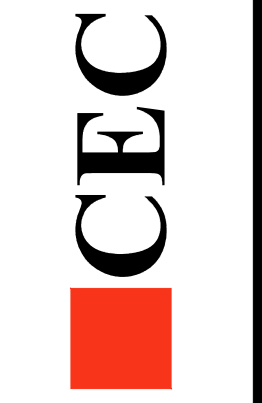
SCALE: 1"=30'
1"=30' WHEN PRINTED ON 22"x34" SHEET
1"=60' WHEN PRINTED ON 11"x17" SHEET

CEC Civil Engineering Consultants, Inc. 2400 86th Street Unit 12 Des Moines, Iowa 50322 515.276.4884 Fax: 515.276.7084 mail@cecinc.com	PUBLISH DATE: May 24, 2021
	DATE OF SURVEY: M/H DESIGNED BY: CM DRAWN BY:
PRAIRIE CROSSING PLAT 8 WAUKEE, IOWA	
SANITARY SEWER SERVICES - LOT 1 AND OUTLOT 'Z'	
SHEET 03 OF 10 E-8382	

PLOT BY: MARTIN HILL - 2021/05/24 - q:\E-FILES\0000\EB392_1\cd\drawings\construction documents\ASB\UTIL\EB392_CD STORM.ASB.dwg - ANBI EXPAND D (9'-0" X 22.00 INCHES) - AUTOCAD PLOT (GENERAL DOCUMENTATION)P3 - CEC-XEB TEST\CTB - PLOT SCALE = 1:1



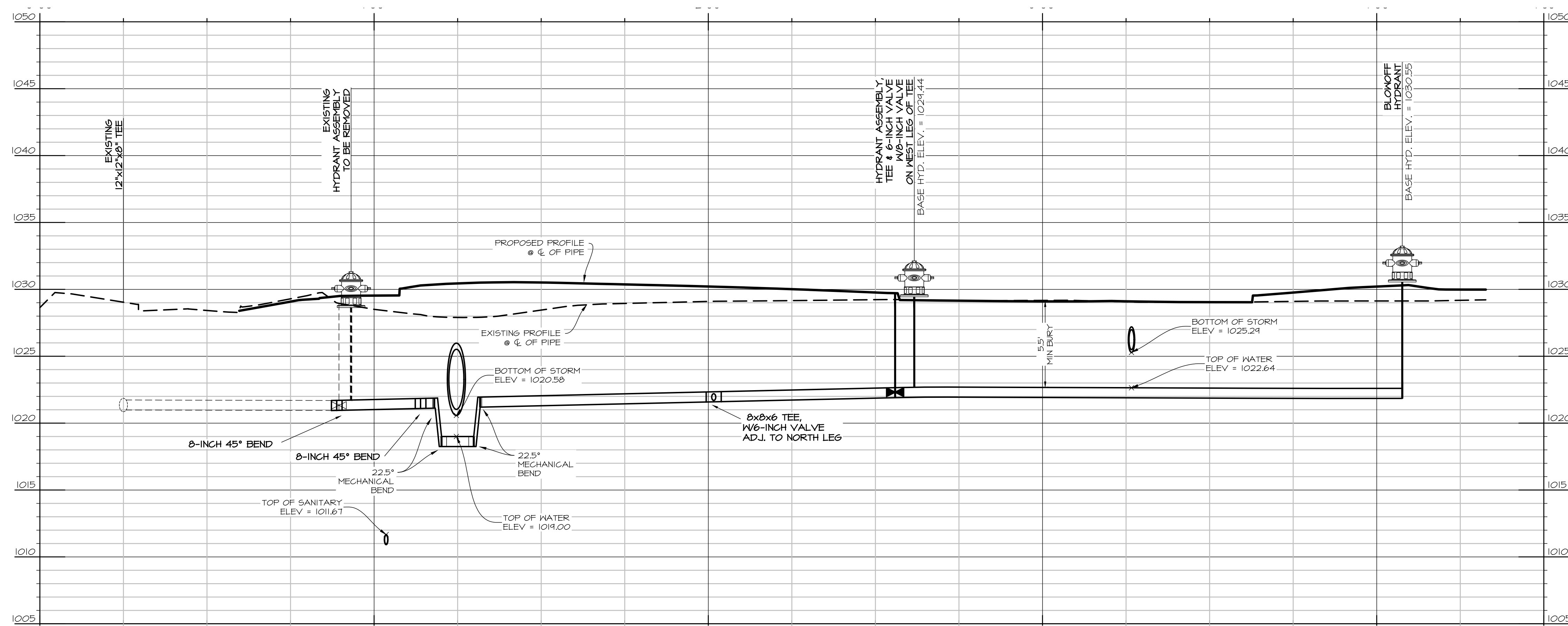
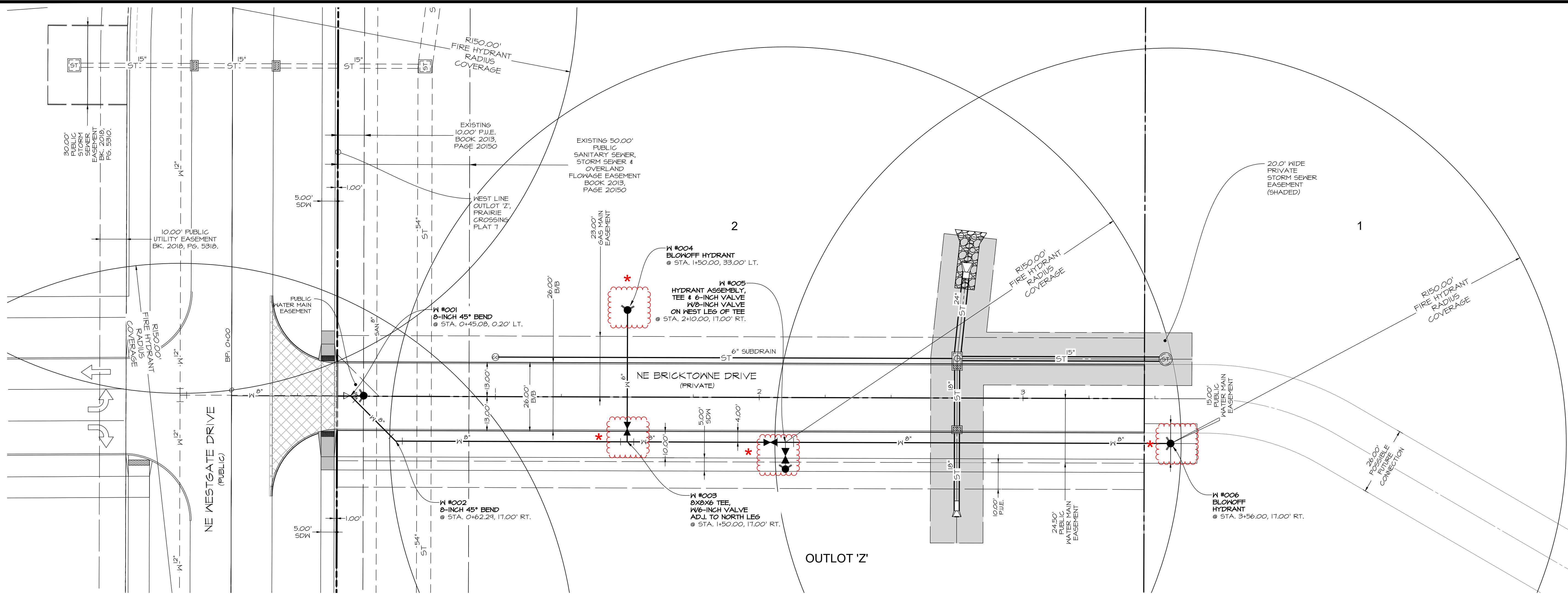
* AS-BUILT DRAWINGS
MAY 24, 2021



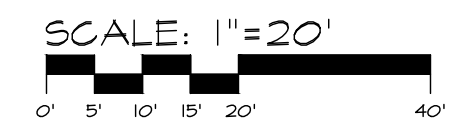
PUBLISH DATE: May 24, 2021
DATE OF SURVEY: MAY 13, 2021
DESIGNED BY: JAG
DRAWN BY: JAG



PLOT BY: MARTIN HILL - 2022/05/24 - q:\E-FILES\6000\EB932_CD WATER-ASB.dwg - ANSI EXPAND D (9400 X 22.00 INCHES) - AUTOCAD PLOT (GENERAL DOCUMENTATION\F3 - CEC-XEB TEST\CTB - PLOT SCALE = 1:1)

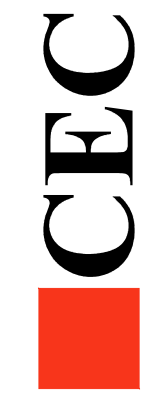


* AS-BUILT DRAWINGS
MAY 24, 2021



SCALE: 1"=20'
1"=40' WHEN PRINTED ON 11"x17" SHEET

Civil Engineering Consultants, Inc.
2400 86th Street Unit 12 Des Moines, Iowa 50322
515.276.4884 Fax: 515.276.7084 mail@cecinc.com

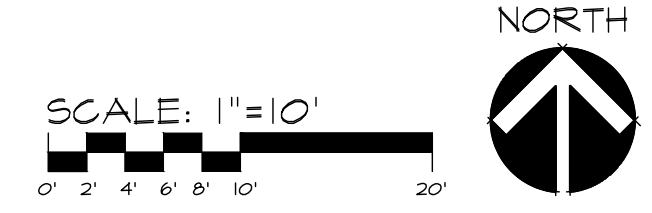
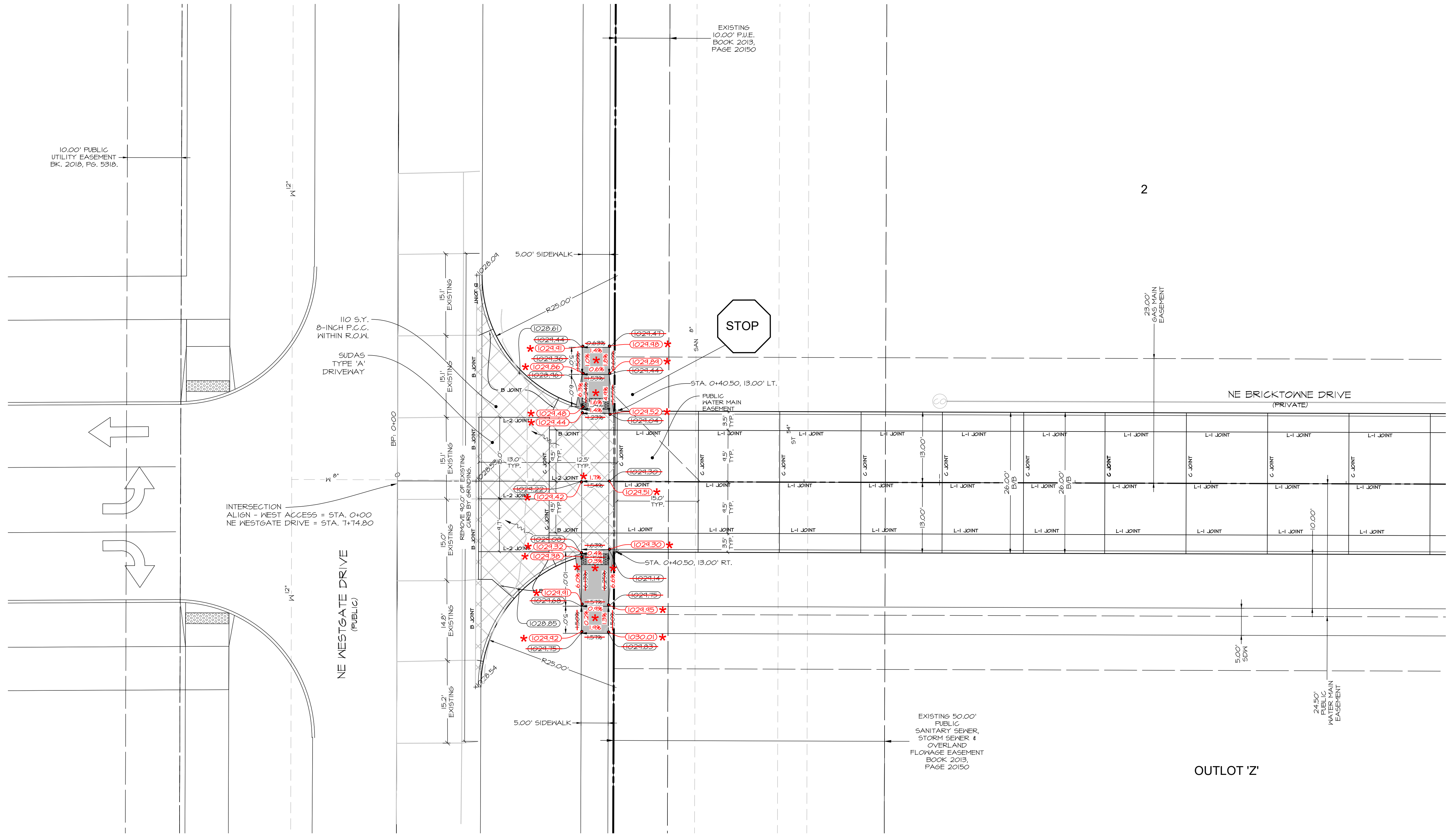


PUBLISH DATE: May 24, 2021	M/H	CM
DATE OF SURVEY:		
DESIGNED BY:		
DRAWN BY:		

PRAIRIE CROSSING PLAT 8
WAUKEE, IOWA
WATER MAIN PLAN AND PROFILE

SHEET 05 OF 05
E-8382

PLOT BY: MARTIN HILL - 2021/05/24 - q:\FILES\9000\EB392 - q:\FILES\9000\EB392\CD DRAWINGS\CONSTRUCTION documents\ASBULLTS\EB392_CD PAVING DETAIL\ASB.dwg - 5/24/2021 12:36:59 PM, mshill, I/I



SCALE: 1"=10'
 1"=10' WHEN PRINTED ON 22"x34" SHEET
 1"=20' WHEN PRINTED ON 11"x17" SHEET

* AS-BUILT DRAWINGS
 MAY 24, 2021



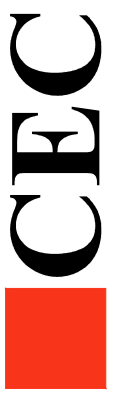
PRAIRIE CROSSING PLAT 8
 WAUKEE, IOWA
 PAVING DETAIL SHEET

SHEET
 07
 OF
 10

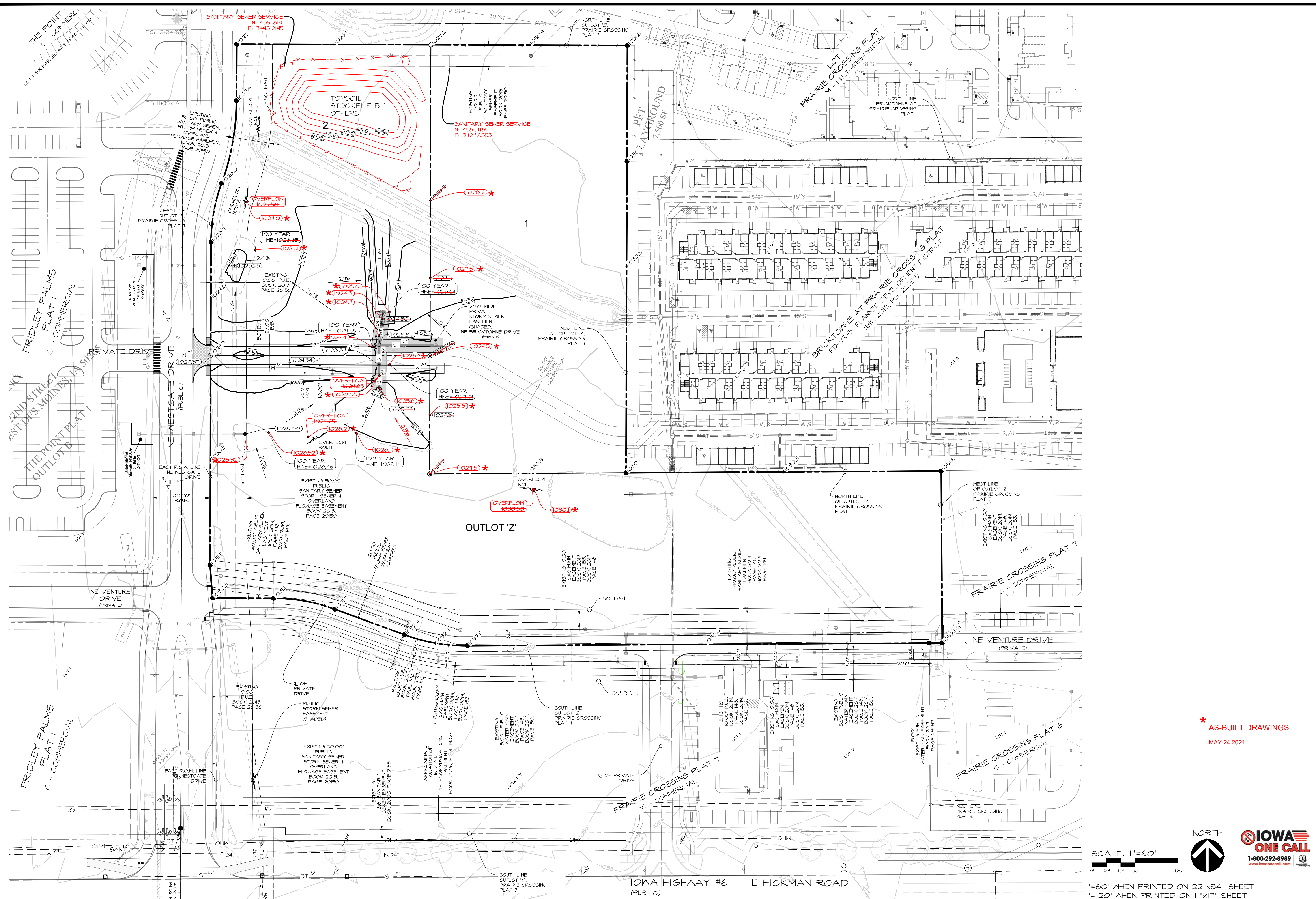
PUBLISH DATE: May 24, 2021

DATE OF SURVEY:
 DESIGNED BY:
 DRAWN BY:

Civil Engineering Consultants, Inc.
 2400 86th Street Unit 12 Des Moines, Iowa 50322
 515.276.4884 Fax: 515.276.7084 mail@cecinc.com

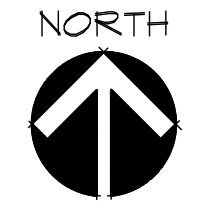


PLOT BY: MARTIN HILL - 2021/05/24 - q:\E-FILES\0000\EB932\c3d\drawings\construction documents\ASBUILT\EB932_CD GRADING-ASB.dwg 1: - ANSIFXAND D (84.00 X 22.00 INCHES) - AUTOCAD PDF (GENERAL DOCUMENTATION)PC3 - CEC-XES TEST.CTP - PLOT SCALE = 1/16



* AS-BUILT DRAWINGS
MAY 24, 2021

SCALE: 1"=60'
0' 20' 40' 60' 120'



1"=60' WHEN PRINTED ON 22"x34" SHEET
1"=120' WHEN PRINTED ON 11"x17" SHEET

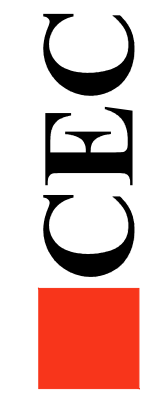
PRairie CROSSING PLAT 8
WAUKEE, IOWA

SHEET
08
OF
10

E-832

PUBLISH DATE: May 24, 2021

DATE OF SURVEY: MAY 05, 2018
DESIGNED BY: JFO
DRAWN BY: MEH



Civil Engineering Consultants, Inc.
2400 86th Street Unit 12 Des Moines, Iowa 50322
515.276.4884 Fax: 515.276.7084 mail@cecinc.com