

ASHLEY ACRES PLAT 2

FINAL PLAT

SE1/4 NW1/4 SEC 21-79-26
OWNER: B & J CLAYTON TRUST
ZONING: A-1

CENTER SEC 21-79-26
ALSO BEING
NE COR PARCEL '21-153'
BK 2022 PG 4353
FND 1/2" REBAR W/CAP #5301
BK 2006 PG 388

SW1/4 NE1/4 SEC 21-79-26
OWNER: FOX VALLEY DEVELOPMENT, LLC
ZONING: R-2

PT SE1/4 NE1/4 SEC 21-79-26
VALLEY DEVELOPMENT, LLC
ZONING: R-2

REVISIONS	DATE
	07/15/22

4121 NW URBANDALE DRIVE
URBANDALE, IA 50322
PHONE: (515) 369-4400

TECH: REVIEW:
ENGINEER: CIVIL DESIGN ADVANTAGE



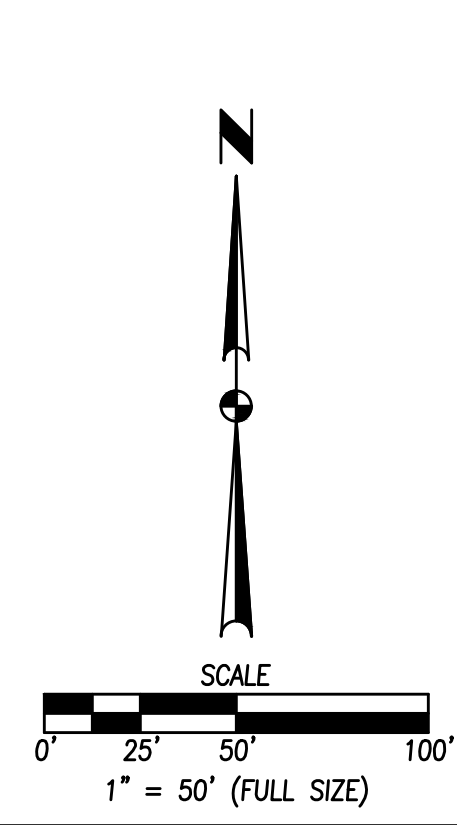
WAUKEE, IOWA
ASHLEY ACRES PLAT 2
FINAL PLAT



PARCEL '21-153'
NE1/4 SW1/4 SEC 21-79-26
OWNER: TEMPLE HOLDINGS, LP
ZONING: R-2

OUTLOT 'Z'
3603 SF
(FUTURE DEVELOPMENT)

OUTLOT 'Y'
4944 SF
(FUTURE DEVELOPMENT)



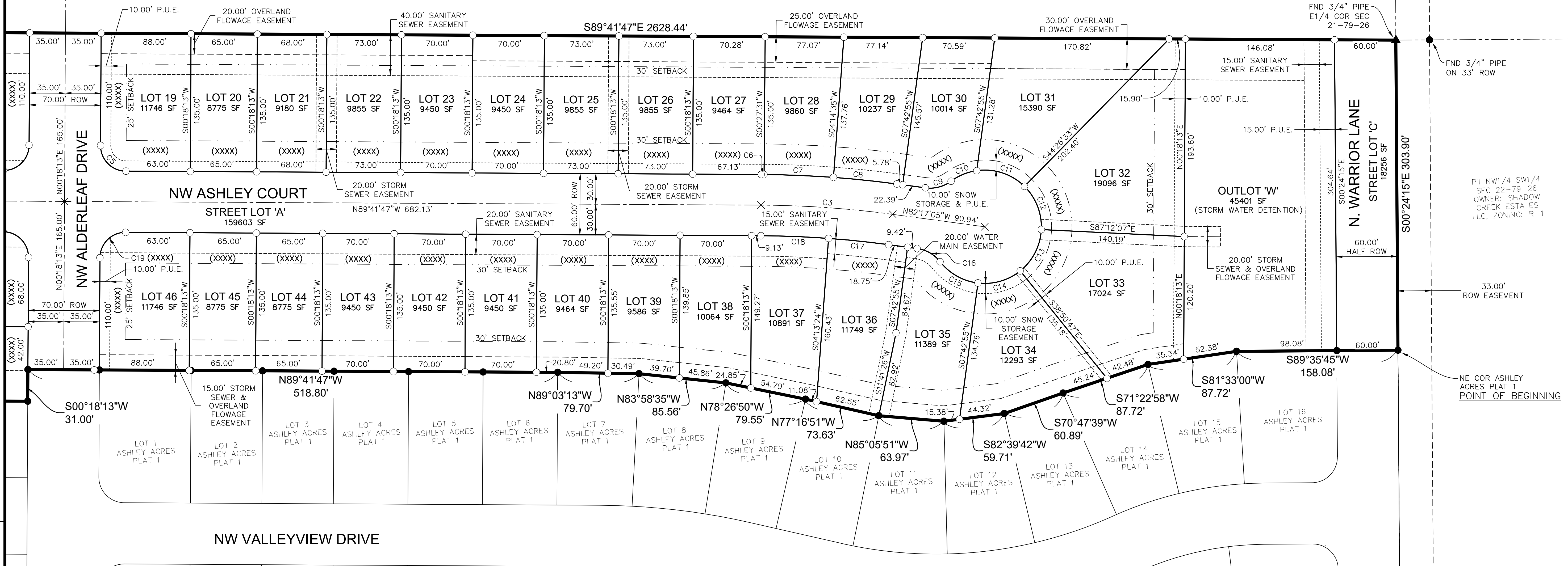
FILE: H:\2020\2021\21\000321-FINAL-PLAT-2.DWG
DATE PLOTTED: 8/4/2022 8:16 AM
DRAWN BY: JAK ERODHL
CHECKED BY: JAK ERODHL

ASHLEY ACRES PLAT 2

FINAL PLAT

PT SE1/4 NE1/4 SEC 21-79-26
OWNER: FOX VALLEY DEVELOPMENT, LLC
ZONING: R-2

PT SW1/4 NW1/4
SEC 22-79-26
OWNER: SHADOW
CREEK ESTATES
LLC, ZONING: R-1

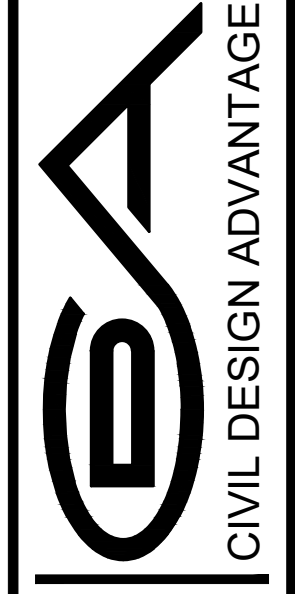


PT NW1/4 SW1/4
SEC 22-79-26
OWNER: SHADOW
CREEK ESTATES
LLC, ZONING: R-1

NE COR ASHLEY
ACRES PLAT 1
POINT OF BEGINNING

REVISIONS	DATE
	07/13/22

4121 NW URBANDALE DRIVE
URBANDALE, IA 50322
PHONE: (515) 369-4400



WAUKEE, IOWA

ASHLEY ACRES PLAT 2

FINAL PLAT

FILE: H:\2020\2021\21\21\ASHLEY ACRES PLAT 2\FINAL PLAT 2\FINAL PLAT 2.DWG
DATE PLOTTED: 8/4/2022 8:17 AM
PLOT BY: JAW, ERDHAL

