

Breakdown of Materials

South

Total Sqft = 6,375
 Nichia Engineered
 Stone Panel = 3,918
 Custom Panel Sqft = 2,457

North

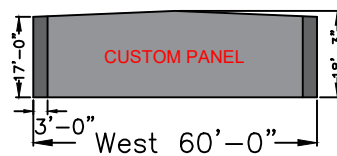
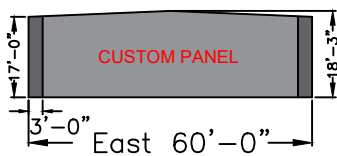
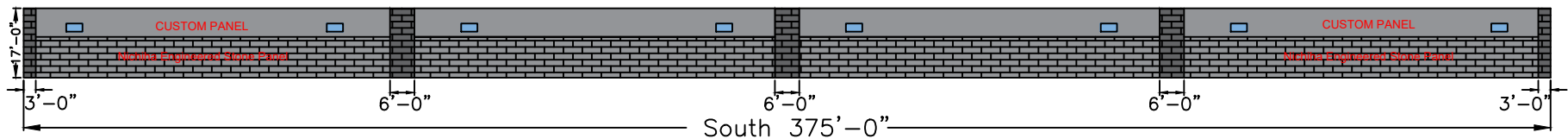
Total Sqft = 6,375
 Doors = 2,787
 Custom Panel Sqft = 3,588
 100% Primary Materials

East & West

Total Sqft = 2,100
 Custom Panel Sqft = 2,100
 100% Primary Materials

Building Materials

Architectural Metal Panel Concealed Fastener
 Engineered Stone Panel
 4'x2' Windows



Building 1

Colors	Unit Mix	Doors
- Ash Gray: Steel	15- 25 x 60'	15- 14'x14' Roll up Doors
- Accent Panels: Slate Gray		15- 3'x7' Walk Doors
- Black: Trim, Roof & Steel Roll up Doors		

FIELD VERIFY ALL SITE
 DIMENSIONS AND BEARINGS

Troy Plex
 Building 1 - Elevation

Pella Building Systems, INC.
 906 WEST 9TH ST.
 Pella, Iowa 50219
 1-800-225-0491 or 1-641-628-9300
 www.Pellabuilding.com



Breakdown of Materials

South

Total Sqft = 6,885
 Doors/ Sqft = 3,345
 Custom Panel Sqft = 3,540
 100% Primary Materials

North

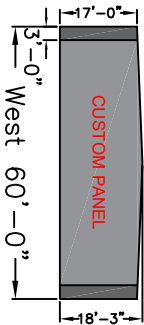
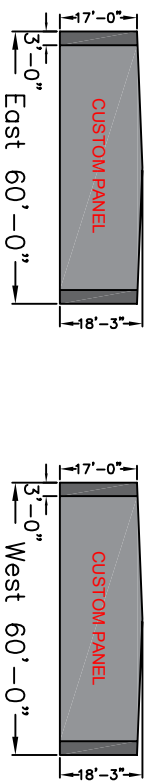
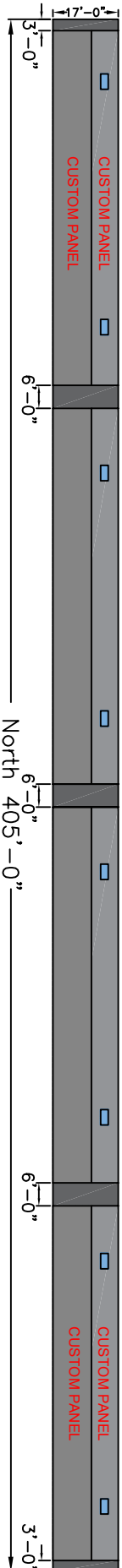
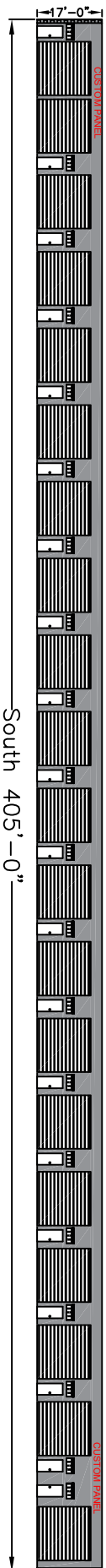
Total Sqft = 6,885
 Custom Panel Sqft = 6,885
 100% Primary Materials

East & West

Total Sqft = 2,100
 Custom Panel Sqft = 2,100
 100% Primary Materials

Building Materials

Architectural Metal Panel Concealed Fastener
 4x2" Windows



Building 2

Colors

- Ash Gray: Steel
- Accent Panels: Slate Gray
- Black: Trim, Roof & Steel Roll up Doors

Unit Mix

- 19-20 x 50'
- 1-25 x 60'

Doors

- 19-14x14' Roll up Doors
- 19-3x7 Walk Doors

FIELD VERIFY ALL SITE DIMENSIONS AND BEARINGS

Troy Plex
 Building 2 - Elevation

Pella Building Systems, INC.
 906 WEST 9TH ST.
 Pella, Iowa 50219
 1-800-225-0491 or 1-641-628-9300
 www.Pellabuilding.com



Pella Building Systems, Inc.
 THE INDUSTRY'S LEADER IN SELF STORAGE DESIGN AND CONSTRUCTION