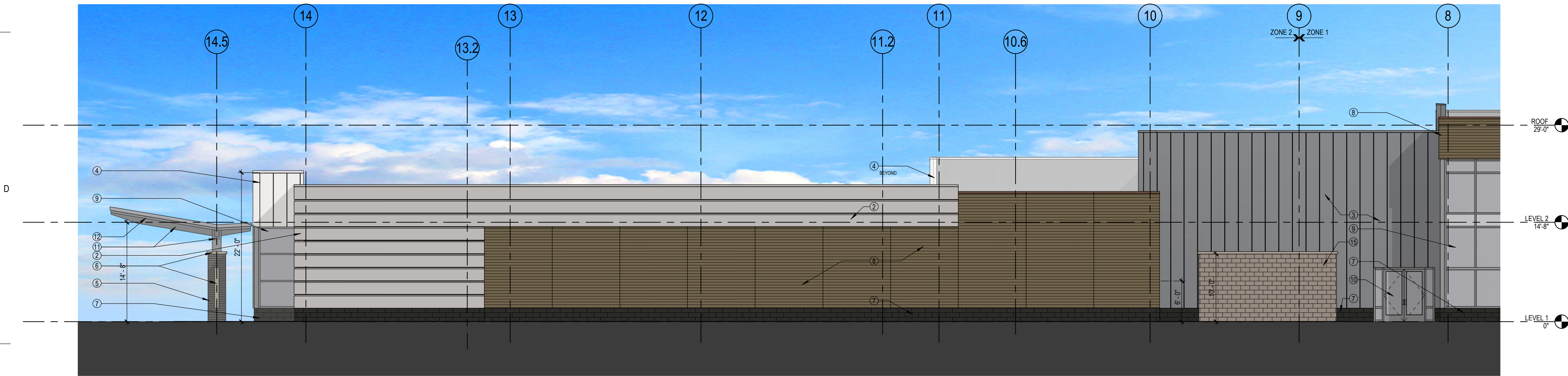


EXTERIOR MATERIAL PERCENTAGES - NORTH ZONE 2:
EXTERIOR AREA ZONE 2: 3,304 SF

EXTERIOR MATERIALS:

2 - IMWP LT GRAY:	930 SF	28.14%
3 - IMWP DK GRAY:	598 SF	18.10%
4 - PWP WHITE:	54 SF	01.63%
7 - STO MASONRY:	309 SF	09.35%
8 - AWP CEDAR:	1,345 SF	40.70%
9 - CURTAINWALL:	68 SF	02.06%

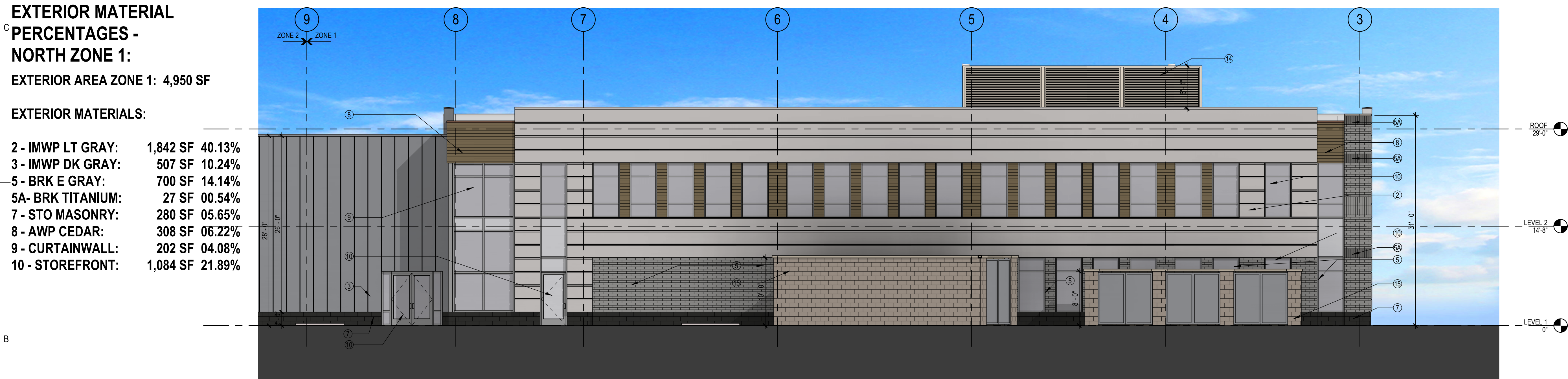


C1 NORTH EXTERIOR ELEVATION ZONE 2
1/8" = 1'-0" (1/A-WP01.10)

EXTERIOR MATERIAL PERCENTAGES - NORTH ZONE 1:
EXTERIOR AREA ZONE 1: 4,950 SF

EXTERIOR MATERIALS:

2 - IMWP LT GRAY:	1,842 SF	40.13%
3 - IMWP DK GRAY:	507 SF	10.24%
5 - BRK E GRAY:	700 SF	14.14%
5A - BRK TITANIUM:	27 SF	00.54%
7 - STO MASONRY:	280 SF	05.65%
8 - AWP CEDAR:	308 SF	06.22%
9 - CURTAINWALL:	202 SF	04.08%
10 - STOREFRONT:	1,084 SF	21.89%

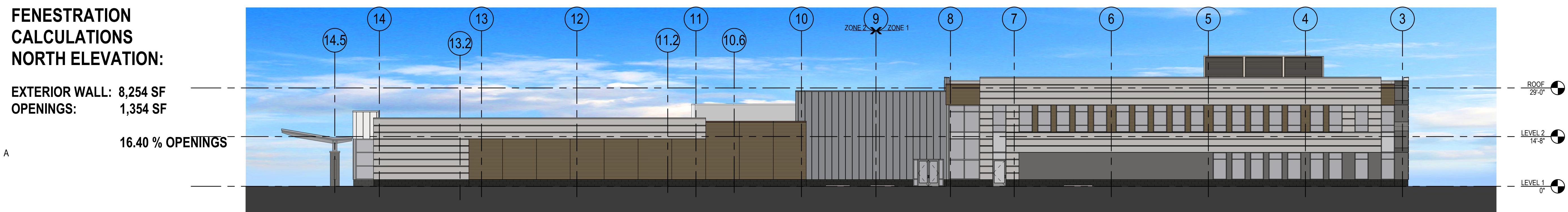


B1 NORTH EXTERIOR ELEVATION ZONE 1
1/8" = 1'-0" (A1/A01.12)

FENESTRATION CALCULATIONS NORTH ELEVATION:

EXTERIOR WALL: 8,254 SF
OPENINGS: 1,354 SF

16.40 % OPENINGS



A1 NORTH EXTERIOR ELEVATION OVERALL
1/16" = 1'-0" (C1/A01.23a)

EXTERIOR ELEVATION MATERIALS - REVISED

- 1 NOT USED
- 2 INSULATED METAL WALL PANEL (IMWP) COLOR 2 (LT GRAY) HORIZONTAL 24" H - 3" NOM THICKNESS
- 3 INSULATED METAL WALL PANEL (IMWP) COLOR 3 (DK GRAY) VERTICAL 24" W - 3" NOM THICKNESS
- 4 PORCELAIN WALL PANEL (PWP) COLOR 4 (TBD) VERTICAL 24" W - 3" NOM THICKNESS
- 5 BRICK MASONRY VENEER (BRK) COLOR (BELDEN BRK-ENGLISH GRAY) 16X4X4 RUNNING BOND
- 5A BRICK MASONRY VENEER (BRK) ACCENT COLOR (INTERSTATE BRK-TITANIUM) 16X4X4
- 6 CAST STONE VENEER (STO) COLOR (EDWARDS - COLOR TBD) 8" W X 7 1/2" H COLUMN INSET AND COLUMN COPING CAPS
- 7 STONE MASONRY VENEER (STO) COLOR (MIDNIGHT ROCK FACE (ESCHELON CORDOVA STONE) 24WXBK4D RUNNING BOND
- 8 FIBER CEMENT ARCHITECTURAL WALL PANEL (AWP) - NICHHA - VINTAGEWOOD AWP-3030-HORIZ - CEDAR
- 9 ALUMINUM CURTAINWALL SYSTEM-2.5'X7.5' NOM - NATURAL ANODIZED AL - 1" INSUL GLAZING (SOLARBAN T04)
- 10 ALUMINUM STOREFRONT & ENTRY SYSTEM - 2'X6' NOM - NATURAL ANODIZED AL - 1" INSUL GLAZING (SOLARBAN T04)
- 11 EXPOSED HSS STEEL FRAMED CANOPY SYSTEM - HPC COATING - COLOR (TBD)
- 12 FIBER CEMENT ARCHITECTURAL WALL PANEL (AWP) SOFFIT - NICHHA - VINTAGEWOOD AWP - 3030-HORIZ - CEDAR
- 13 LOUVERED MECHANICAL SCREEN-WALL (DK-GRAY) - MATCH IMWP COLOR 3
- 14 LOUVERED MECHANICAL SCREEN-WALL (DIVINE WHITE) - MATCH PWP COLOR 4
- 15 SITE ENCLOSURE WALLS - ROCKFACE CMU - AMCON CLAY BUFF, CEDAR

1 NOT USED	2 INSULATED METAL WALL PANEL (IMWP) MANUFACTURER: CENTRA KINGSPAN COLOR: (TBD) LIGHT GRAY HORIZONTAL INSTALLATION TYPICAL PANEL SIZE: 96" W X 24" H X 3" D
3 INSULATED METAL WALL PANEL (IMWP) MANUFACTURER: CENTRA KINGSPAN COLOR: (TBD) SLATE GRAY GRAYTES VERTICAL INSTALLATION TYPICAL PANEL SIZE: 96" W X 96" X 3" D	4 PORCELAIN WALL PANEL (PWP) MANUFACTURER: FLOREN PACKAGES COLOR: (TBD) CALCITTA GOLD STATUARIO VERTICAL INSTALLATION TYPICAL PANEL SIZE: 36" W X 48" H X 3/8" (INCL. SUPPORTS)
5 BRICK MASONRY VENEER (BRK) MANUFACTURER: GLEN-GERY BELDEN INTERSTATE BRICK COLOR: (TBD) BELDEN BRK-ENGLISH GRAY RUNNING BOND INSTALLATION TYPICAL UNIT SIZE: 16" W X 4" H X 4" D	5A BRICK MASONRY VENEER ACCENT (BRK) MANUFACTURER: GLEN-GERY BELDEN INTERSTATE BRICK COLOR: (TBD) BELDEN BRK-TITANIUM STACK BOND RUNNING BOND INSTALLATION TYPICAL UNIT SIZE: 16" W X 4" H X 4" D
6 CAST STONE VENEER ACCENT (STO) MANUFACTURER: EDWARDS CAST STONE COLOR: (TBD) EDWARDS - COLOR TBD COLUMN INSET ACCENT & COPING CAP TYPICAL UNIT SIZE: 8" W X 7 1/2" H X 1" D COPING	7 STONE MASONRY VENEER (STO) MANUFACTURER: ESCHERON CORDOVA STONE COLOR: (TBD) MIDNIGHT ROCK FACE RUNNING BOND INSTALLATION TYPICAL UNIT SIZE: 24" W X 16" H X 4" D
8 FIBER CEMENT WALL PANEL (AWP) MANUFACTURER: NICHHA VINTAGEWOOD COLOR: (TBD) VINTAGEWOOD HORIZONTAL INSTALLATION TYPICAL PANEL SIZE: 96" W X 96" H X 3/8" D	9 ALUMINUM CURTAINWALL SYSTEM MANUFACTURER: SOLARBAN COLOR: (TBD) NATURAL ANODIZED ALUMINUM GLAZING: 1" INSUL GLAZING (SOLARBAN T04) 3030 HPC 0.24 TYPICAL MULLION SIZE: 2 1/2" W X 1 1/2" D
10 ALUMINUM STOREFRONT SYSTEM MANUFACTURER: SOLARBAN COLOR: (TBD) NATURAL ANODIZED ALUMINUM GLAZING: 1" INSUL GLAZING (SOLARBAN T04) 3030 HPC 0.24 TYPICAL MULLION SIZE: 2 1/2" W X 1 1/2" D	11 EXPOSED HSS STEEL FRAMED CANOPY MANUFACTURER: TBD COLOR: MATCH PWP COLOR 4 HSS STEEL SUPPORTS PER STRUCTURAL - HPC COLOR: MATCH COLOR 3
12 FIBER CEMENT WALL PANEL (AWP) CEILING MANUFACTURER: NICHHA VINTAGEWOOD COLOR: (TBD) VINTAGEWOOD HORIZONTAL INSTALLATION TYPICAL PANEL SIZE: 96" W X 96" H X 3/8" D	13 LOUVERED MECHANICAL SCREEN WALL MANUFACTURER: TBD COLOR: MATCH PWP COLOR 4 HSS STEEL SUPPORTS PER STRUCTURAL - HPC COLOR: MATCH COLOR 3
14 LOUVERED MECHANICAL SCREEN WALL MANUFACTURER: TBD COLOR: MATCH PWP COLOR 4 HSS STEEL SUPPORTS PER STRUCTURAL - HPC COLOR: MATCH PWP COLOR 4	15 CMU MASONRY EXTERIOR ENCLOSURES MANUFACTURER: AMCON ANCHOR BLOCK COLOR: (TBD) CEDAR CLAY BUFF RUNNING BOND INSTALLATION TYPICAL UNIT SIZE: 16" W X 8" H X 8" D

EXTERIOR MATERIAL PALETTE

NOT FOR CONSTRUCTION DESIGN DEVELOPMENT - CORE & SHELL

RDG
PLANNING • DESIGN

THE IOWA CLINIC

Kettlestone Development
SE Tallgrass Lane
Waukee, IA 50263
THE IOWA CLINIC

EXTERIOR ELEVATIONS SITE PLAN SUBMITTAL

A05.01-SP

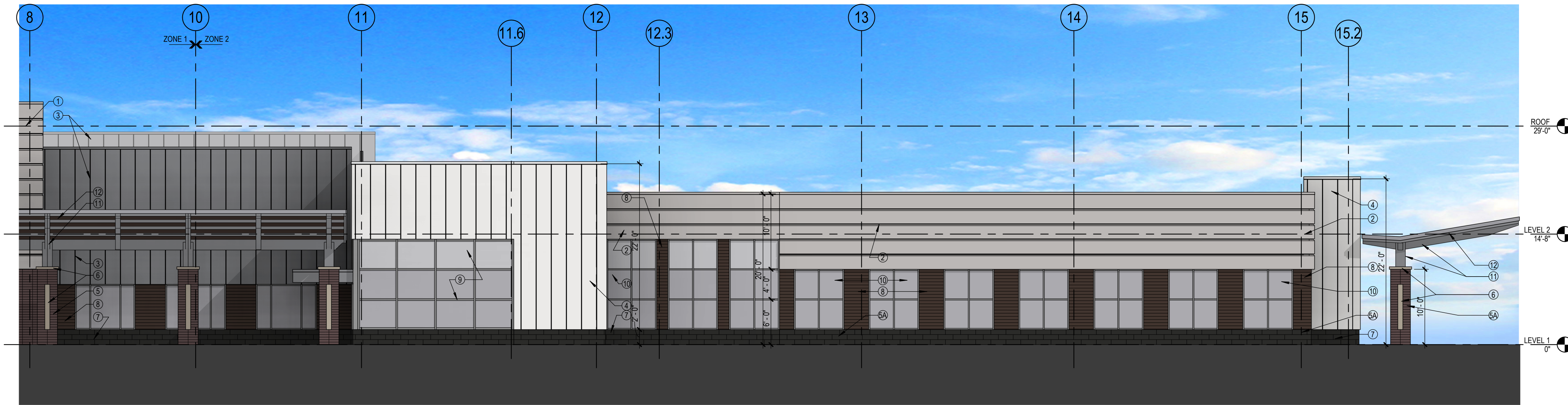
DATE PRINTED: 14/02/2022 4:55:57PM

EXTERIOR MATERIAL PERCENTAGES - SOUTH ZONE 2:

EXTERIOR AREA ZONE 2: 3,402 SF

EXTERIOR MATERIALS:

2 - IMWP LT GRAY:	848 SF	24.92%
3 - IMWP DK GRAY:	373 SF	10.96%
4 - PWP WHITE:	586 SF	17.22%
7 - STO MASONRY:	309 SF	09.08%
8 - AWP BARK:	290 SF	08.52%
9 - CURTAINWALL:	248 SF	07.28%
10 - STOREFRONT:	1,093 SF	32.13%



(C1) SOUTH ELEVATION ZONE 2
1/8" = 1'-0" (1/A-WP01.10)

EXTERIOR MATERIAL PERCENTAGES - SOUTH ZONE 1:

EXTERIOR AREA ZONE 1: 5,147 SF

EXTERIOR MATERIALS:

2 - IMWP LT GRAY:	1,295 SF	25.16%
3 - IMWP DK GRAY:	370 SF	07.19%
4 - PWP WHITE:	612 SF	11.89%
5 - BRK TITANIUM:	290 SF	05.63%
7 - STO TITANIUM:	256 SF	04.97%
8 - AWP BARK:	505 SF	09.81%
9 - CURTAINWALL:	517 SF	10.04%
10 - STOREFRONT:	1,304 SF	25.33%

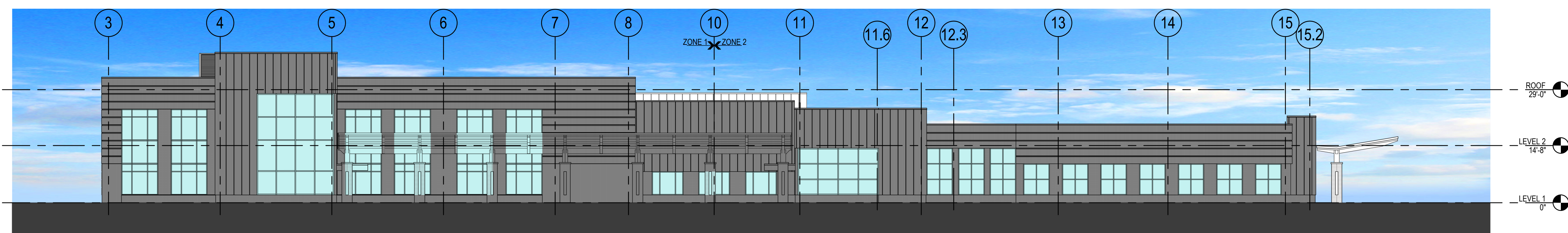


(B1) SOUTH ELEVATION ZONE 1
1/8" = 1'-0"

FENESTRATION CALCULATIONS SOUTH ELEVATION:

EXTERIOR WALL: 8,549 SF
OPENINGS: 2,754 SF

32.21% OPENINGS



NOTE: MATERIALS HIDDEN FOR ELEVATION CLARITY

(A1) SOUTH ELEVATION OVERALL
1/8" = 1'-0" (A1/A01.11)

EXTERIOR ELEVATION MATERIALS - REVISED

- NOT USED
- INSULATED METAL WALL PANEL (IMWP) COLOR 2 (LT GRAY) HORIZONTAL 24"W - 3" NOM THICKNESS
- INSULATED METAL WALL PANEL (IMWP) COLOR 3 (DK GRAY) VERTICAL 24"W - 3" NOM THICKNESS
- PORCELAIN WALL PANEL (PWP) COLOR 4 (TBD) VERTICAL 24"W - 3" NOM THICKNESS
- BRICK MASONRY VENEER (BRK) COLOR (INTERSTATE BRK-TITANIUM) 16X44 STACK BOND
- NOT USED
- CAST STONE VENEER (STO) COLOR (EDWARDS - COLOR TBD) 8"W X 27"H COLUMN INSET AND COLUMN COPING CAPS
- STONE MASONRY VENEER (STO) COLOR MIDNIGHT ROCK FACE (ESCHELON CORDOVA STONE) 24WBR4XD RUNNING BOND
- FIBER CEMENT ARCHITECTURAL WALL PANEL (AWP) - NICHHA - VINTAGEWOOD AWP-3033-HORIZ - BARK
- ALUMINUM CURTAINWALL SYSTEM-2.5'X7.5' NOM - NATURAL ANODIZED AL - 1" INSUL GLAZING (SOLARBAN 70XL)
- ALUMINUM STOREFRONT & ENTRY SYSTEM - 2'X8' NOM - NATURAL ANODIZED AL - 1" INSUL GLAZING (SOLARBAN 70XL)
- EXPOSED HSS STEEL FRAMED CANOPY SYSTEM - HPC COATING - COLOR (TBD)
- FIBER CEMENT ARCHITECTURAL WALL PANEL (AWP) SOFFIT - NICHHA - VINTAGEWOOD AWP - 3030-HORIZ - BARK
- LOUVERED MECHANICAL SCREEN-WALL (DK-GRAY) - MATCH IMWP COLOR 3
- LOUVERED MECHANICAL SCREEN-WALL (DIVINE WHITE) - MATCH PWP COLOR 4
- SITE ENCLOSURE WALLS - ROCKFACE CMU - AMCON CLAY BUFF. CEDAR

1 NOT USED	2 INSULATED METAL WALL PANEL (IMWP) MANUFACTURER: CENTRIA KINGSPAN COLOR: (TBD) LIGHT GRAY HORIZONTAL INSTALLATION TYPICAL PANEL SIZE: 96" X 24" X 1/2"
3 INSULATED METAL WALL PANEL (IMWP) MANUFACTURER: CENTRIA KINGSPAN COLOR: (TBD) SLATE GRAY (GRAPHITE) VERTICAL INSTALLATION TYPICAL PANEL SIZE: 24" X 96" X 1/2"	4 PORCELAIN WALL PANEL (PWP) MANUFACTURER: FLORIM FACADES COLOR: (TBD) CALIFORNIA GOLD (STATUS) HORIZ VERTICAL INSTALLATION TYPICAL PANEL SIZE: 24" X 96" X 1/2" (INCL. SUPPORTS)
5 BRICK MASONRY VENEER (BRK) MANUFACTURER: EDWARDS HILLTOP INTERSTATE BRICK COLOR: (INTERSTATE TITANIUM) STACK BOND INSTALLATION TYPICAL UNIT SIZE: 16"W X 4"H X 1/2"	6 CAST STONE VENEER ACCENT (STO) MANUFACTURER: EDWARDS CAST STONE COLOR: (TBD) GRANITE MIDNIGHT COLUMN INSET & COPING CAP TYPICAL UNIT SIZE: 8"W X 27"H X 1/2" H COPING
7 STONE MASONRY VENEER (STO) MANUFACTURER: EDWARDS CORDOVA STONE COLOR: (TBD) MIDNIGHT RUNNING BOND INSTALLATION TYPICAL UNIT SIZE: 24"W X 8"H X 1/2"	8 FIBER CEMENT WALL PANEL (AWP) MANUFACTURER: NICHHA - VINTAGEWOOD COLOR: BARK HORIZONTAL INSTALLATION TYPICAL UNIT SIZE: 24"W X 96" PANELS - REVEALS @ 9"
9 ALUMINUM CURTAINWALL SYSTEM MANUFACTURER: KAWNEER ERCO, YKK, WAJISAU COLOR: BARKING NATURAL ANODIZED ALUMINUM GLAZING: 1" INSUL GLAZING (SOLARBAN 70XL) SHGC 0.27, NFRC 0.24 TYPICAL MILLION SIZE: 2' X 7' 0"	10 ALUMINUM STOREFRONT SYSTEM MANUFACTURER: KAWNEER ERCO, YKK, WAJISAU COLOR: BARKING NATURAL ANODIZED ALUMINUM GLAZING: 1" INSUL GLAZING (SOLARBAN 70XL) SHGC 0.27, NFRC 0.24 TYPICAL MILLION SIZE: 2' X 7' 0"
11 EXPOSED HSS STEEL FRAMED CANOPY MANUFACTURER: TBC COLOR: MATCH PWP COLOR 4 HSS STEEL SUPPORTS PER STRUCTURAL HPC COLOR: MATCH PWP COLOR 4	12 FIBER CEMENT WALL PANEL (AWP) CEILING MANUFACTURER: TBC COLOR: MATCH PWP COLOR 4 HSS STEEL SUPPORTS PER STRUCTURAL HPC COLOR: MATCH PWP COLOR 4
13 LOUVERED MECHANICAL SCREEN WALL MANUFACTURER: TBC COLOR: MATCH PWP COLOR 3 (SLATE GRAY - GRAPHITE) HSS STEEL SUPPORTS PER STRUCTURAL HPC COLOR: MATCH PWP COLOR 3	14 LOUVERED MECHANICAL SCREEN WALL MANUFACTURER: TBC COLOR: MATCH PWP COLOR 4 HSS STEEL SUPPORTS PER STRUCTURAL HPC COLOR: MATCH PWP COLOR 4
15 CMU MASONRY EXTERIOR ENCLOSURES MANUFACTURER: AMCON ANCHOR BLOCK COLOR: (TBD) CLAY BUFF RUNNING BOND INSTALLATION TYPICAL UNIT SIZE: 16"W X 8"H X 1/2"	

EXTERIOR MATERIAL PALETTE

IOWA CLINIC - WAUKEE

NOT FOR CONSTRUCTION DESIGN DEVELOPMENT - CORE & SHELL

Kettlestone Development
SE Tallgrass Lane
Waukee, IA 50263
THE IOWA CLINIC

RDG Planning & Design
1000 Westwood Parkway, Suite 100
Waukee, IA 50263
Phone: (515) 223-8104

ARCHITECT OF RECORD
RSD Planning & Design
1000 Westwood Parkway, Suite 100
Waukee, IA 50263
Phone: (515) 277-0275

STRUCTURAL
Riser Proctor Engineering
1000 Westwood Parkway, Suite 100
Waukee, IA 50263
Phone: (515) 277-0275

ELEC / IT / AV
ELEC / IT / AV
1000 Westwood Parkway, Suite 100
Waukee, IA 50263
Phone: (515) 277-0275

ASC DESIGN ARCHITECT
1000 Westwood Parkway, Suite 100
Waukee, IA 50263
Phone: (515) 277-0275

MECH PLUMB
Baird Group
1000 Westwood Parkway, Suite 100
Waukee, IA 50263
Phone: (515) 277-0275

CIVIL / LANDSCAPE
Shiva Hattery
1000 Westwood Parkway, Suite 100
Waukee, IA 50263
Phone: (515) 277-0275

PROJECT: AUGUST 26, 2022
PROJECT NO: R3904.672.00
ISSUE: 02/22
RDG Planning & Design
THIS DOCUMENT HAS BEEN PREPARED BY RDG SPECIFICALLY FOR THE IOWA CLINIC - WAUKEE
PROJECT. IT IS NOT BEING REPRODUCED FOR USE ON OTHER PROJECTS OR IN OTHER LOCATIONS WITHOUT THE EXPRESS WRITTEN APPROVAL AND PARTICIPATION OF RDG PLANNING & DESIGN, INC. REPRODUCTION IS PROHIBITED.
THIS DRAWING MAY BE REPRODUCED AS CHANGES THAT HAVE OCCURRED DURING BID OR CONSTRUCTION PHASES. CONSTRUCTION DOCUMENTS, ADDENDA AND CHANGE DOCUMENTS REVISION THE OFFICIAL CONSTRUCTION DOCUMENTS.

EXTERIOR ELEVATIONS SITE PLAN SUBMITTAL

A05.02-SP

DATE PRINTED: 8/26/2022 8:32:29 AM

EXTERIOR AREA LINK-E ELEV: 1,583 SF

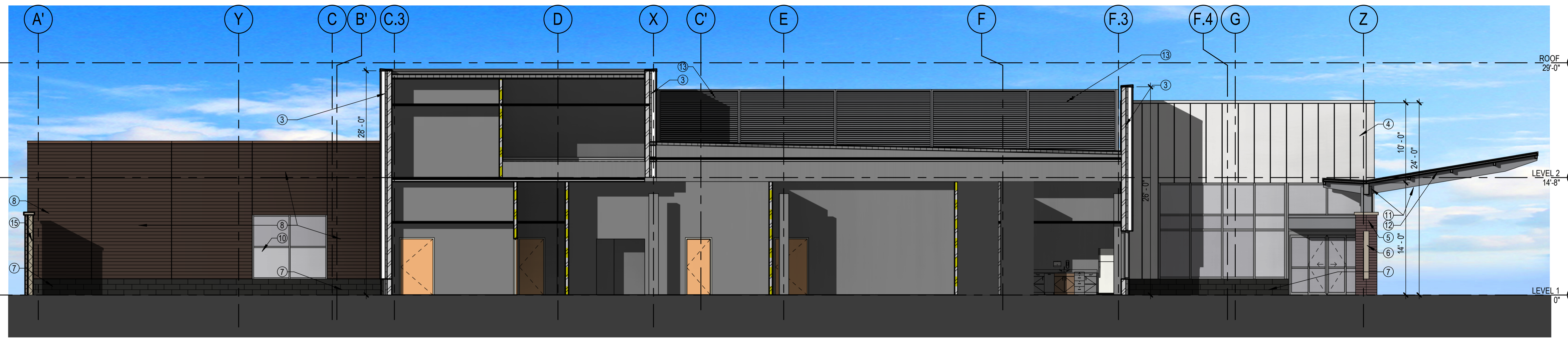
EXTERIOR MATERIALS:

4 - PWP WHITE:	373 SF	23.56%
7 - STO MASONRY:	128 SF	08.08%
8 - AWP BARK:	673 SF	42.51%
9 - CURTAINWALL:	333 SF	21.03%
10 - STOREFRONT:	75 SF	04.73%

FENESTRATION CALCULATIONS LINK EAST ELEVATION:

EXTERIOR WALL: 1,583 SF
OPENINGS: 408 SF

25.77% OPENINGS



D1 BUILDING SECTION THRU LINK TO ASC
1/8" = 1'-0" (A1/A02.03)

EXTERIOR AREA EAST ELEV: 3,517 SF

EXTERIOR MATERIALS:

2 - IMWP LT GRAY:	1,452 SF	41.28%
4 - PWP WHITE:	529 SF	15.04%
7 - STO MASONRY:	296 SF	08.41%
8 - AWP BARK:	337 SF	09.58%
9 - CURTAINWALL:	200 SF	05.68%
10 - STOREFRONT:	660 SF	18.76%

FENESTRATION CALCULATIONS EAST ELEVATION:

EXTERIOR WALL: 3,517 SF
OPENINGS: 860 SF

24.45% OPENINGS



C1 EAST ELEVATION ZONE 2
1/8" = 1'-0" (1A-WP01.10)

EXTERIOR AREA LINK-W ELEV: 2,245 SF

EXTERIOR MATERIALS:

2 - IMWP LT GRAY:	323 SF	14.38%
3 - IMWP DK GRAY:	916 SF	40.80%
4 - PWP WHITE:	333 SF	14.83%
5 - BRK TITANIUM:	130 SF	05.79%
7 - STO MASONRY:	36 SF	01.60%
8 - AWP BARK:	117 SF	05.21%
9 - CURTAINWALL:	420 SF	18.71%

FENESTRATION CALCULATIONS LINK WEST ELEVATION:

EXTERIOR WALL: 2,245 SF
OPENINGS: 420 SF

18.71% OPENINGS



B1 BUILDING SECTION THRU LINK TO MOB
1/8" = 1'-0"

EXTERIOR AREA WEST ELEV: 4,310 SF

EXTERIOR MATERIALS:

2 - IMWP LT GRAY:	1,704 SF	39.53%
4 - PWP WHITE:	492 SF	11.41%
5 - BRK TITANIUM:	376 SF	08.72%
7 - STO MASONRY:	178 SF	04.13%
8 - AWP BARK:	778 SF	18.05%
9 - CURTAINWALL:	120 SF	02.78%
10 - STOREFRONT:	670 SF	15.54%

FENESTRATION CALCULATIONS WEST ELEVATION:

EXTERIOR WALL: 4,310 SF
OPENINGS: 790 SF

18.33% OPENINGS



A1 WEST ELEVATION ZONE 1
1/8" = 1'-0" (A1/A11.10)

EXTERIOR ELEVATION MATERIALS - REVISED

- NOT USED
- INSULATED METAL WALL PANEL (IMWP) COLOR 2 (LT GRAY) HORIZONTAL 24" H - 3" NOM THICKNESS
- INSULATED METAL WALL PANEL (IMWP) COLOR 3 (DK GRAY) VERTICAL 24" H - 3" NOM THICKNESS
- PORCELAIN WALL PANEL (PWP) COLOR 4 (TBD) VERTICAL 24" W - 3" NOM THICKNESS
- BRICK MASONRY VENEER (BRK) COLOR (INTERSTATE BRK-TITANIUM) 16X44X4 STACK BOND
- NOT USED
- CAST STONE VENEER (STO) COLOR (EDWARDS - COLOR TBD) 8" W X 7 1/2" H COLUMN INSET AND COLUMN COPING CAPS
- STONE MASONRY VENEER (STO) COLOR MIDNIGHT ROCK FACE (ESCHELON CORDOVA STONE) 24" W X 8" H 40D RUNNING BOND
- FIBER CEMENT ARCHITECTURAL WALL PANEL (AWP) - NICHHA - VINTAGEWOOD AWP-3030-HORIZ - BARK
- ALUMINUM CURTAINWALL SYSTEM-2.5'X7.5' NOM - NATURAL ANODIZED AL - 1" INSUL GLAZING (SOLARBAN 70XL)
- ALUMINUM STOREFRONT & ENTRY SYSTEM - 2'X6' NOM - NATURAL ANODIZED AL - 1" INSUL GLAZING (SOLARBAN 70XL)
- EXPOSED HSS STEEL FRAMED CANOPY SYSTEM - HPC COATING - COLOR (TBD)
- FIBER CEMENT ARCHITECTURAL WALL PANEL (AWP) SOFFIT - NICHHA - VINTAGEWOOD AWP - 3030-HORIZ - BARK
- LOUVERED MECHANICAL SCREEN-WALL (DK-GRAY) - MATCH IMWP COLOR 3
- LOUVERED MECHANICAL SCREEN-WALL (DIVINE WHITE) - MATCH PWP COLOR 4
- SITE ENCLOSURE WALLS - ROCKFACE CMU - AMCON CLAY BUFF, CEDAR

1 NOT USED

2 INSULATED METAL WALL PANEL (IMWP)
MANUFACTURER: CENTRA KINGSPAN
COLOR: (TBD) LIGHT GRAY
HORIZONTAL INSTALLATION
TYPICAL PANEL SIZE: 96" X 120" X 3/8" X 3" D

3 INSULATED METAL WALL PANEL (IMWP)
MANUFACTURER: CENTRA KINGSPAN
COLOR: (TBD) SLATE GRAY (BRICKS)
VERTICAL INSTALLATION
TYPICAL PANEL SIZE: 24" W X 96" H X 3/8" X 3" D

4 PORCELAIN WALL PANEL (PWP)
MANUFACTURER: FLORINA FACADES
COLOR: (TBD) CAKATIA GOLD (SILKROAD)
VERTICAL INSTALLATION
TYPICAL PANEL SIZE: 24" W X 96" H X 3/8" (INCL. SUPPORTS)

5 BRICK MASONRY VENEER (BRK)
MANUFACTURER: GLEN ZEVE; BELDEN INTERSTATE BRICK
COLOR: INTERSTATE TITANIUM
STACK BOND INSTALLATION
TYPICAL UNIT SIZE: 16" W X 4" H X 4" D

6 CAST STONE VENEER ACCENT (STO)
MANUFACTURER: EDWARDS-LINE STONE
COLOR: (TBD) 16-05 (16-01)
COLUMN INSET AND COPING CAP
TYPICAL UNIT SIZE: 8" W X 12" H INSET 4" H COPING

7 STONE MASONRY VENEER (STO)
MANUFACTURER: EDWARDS-LINE STONE
COLOR: (TBD) GRAYE MIDNIGHT
RUNNING BOND INSTALLATION
TYPICAL UNIT SIZE: 24" W X 8" H X 4" D

8 FIBER CEMENT WALL PANEL (AWP)
MANUFACTURER: NICHHA - VINTAGEWOOD
COLOR: (TBD) BARK
HORIZONTAL INSTALLATION
TYPICAL UNIT SIZE: 120" W X 96" H PANELS: REVEALS @ 8"

9 ALUMINUM CURTAINWALL SYSTEM
MANUFACTURER: KAMMERLE (FPC) INC. WILSON
COLOR MILLIONS: NATURAL ANODIZED ALUMINUM
GLAZING: 1" INSUL GLAZING (SOLARBAN 70XL) 1/2" HPC COATING
TYPICAL MILLION SIZE: 2' 0" W X 7' 0" D

10 ALUMINUM STOREFRONT SYSTEM
MANUFACTURER: KAMMERLE (FPC) INC. WILSON
COLOR MILLIONS: NATURAL ANODIZED ALUMINUM
GLAZING: 1" INSUL GLAZING (SOLARBAN 70XL) 1/2" HPC COATING
TYPICAL MILLION SIZE: 2' 0" W X 6' 0" D

11 EXPOSED HSS STEEL FRAMED CANOPY
MANUFACTURER: TBO
COLOR: MATCH IMWP COLOR 3
HSS STEEL SUPPORTS PER STRUCTURAL - HPC COLOR: MATCH PWP COLOR 4

12 FIBER CEMENT WALL PANEL (AWP) CEILING
MANUFACTURER: NICHHA - VINTAGEWOOD
COLOR: (TBD) BARK
HORIZONTAL INSTALLATION
TYPICAL UNIT SIZE: 120" W X 96" H

13 LOUVERED MECHANICAL SCREEN WALL
MANUFACTURER: TBO
COLOR: MATCH IMWP COLOR 3
HSS STEEL SUPPORTS PER STRUCTURAL - HPC COLOR: MATCH PWP COLOR 4

14 LOUVERED MECHANICAL SCREEN WALL
MANUFACTURER: TBO
COLOR: MATCH IMWP COLOR 3
HSS STEEL SUPPORTS PER STRUCTURAL - HPC COLOR: MATCH PWP COLOR 4

15 CMU MASONRY EXTERIOR ENCLOSURES
MANUFACTURER: AMCON AND/OR BRICK
COLOR: (TBD) CEDAR CLAY BUFF
RUNNING BOND INSTALLATION
TYPICAL UNIT SIZE: 16" W X 8" H X 8" D

EXTERIOR MATERIAL PALETTE

NOT FOR CONSTRUCTION DESIGN DEVELOPMENT - CORE & SHELL

RDG
PLANNING • DESIGN

ARCHITECT OF RECORD
RSD Planning & Design
1000 Westwood Parkway, Suite 100
Waukee, IA 50263
Phone: (515) 277-0275

STRUCTURAL
Riser Proctor Engineering
204 Moore, IA 50242
Phone: (515) 277-0275

ELEC/IT/AV
COMMUNICATIONS ENGINEERING, INC.
1000 Westwood Parkway, Suite 100
Waukee, IA 50263
Phone: (515) 288-3383

MECH/PLUMB
Baker Group
204 Moore, IA 50242
Phone: (515) 282-2400

CIVIL/LANDSCAPE
Shiva Heblery
1000 Westwood Parkway, Suite 100
Waukee, IA 50263
Phone: (515) 282-3383

THE IOWA CLINIC

Kettlestone Development
SE Tallgrass Lane
Waukee, IA 50263

THE IOWA CLINIC

KEY PLAN
ZONE 1 ZONE 2

ISSUANCE: AUGUST 26, 2022
PROJECT NO: R3904.672.00

RDG Planning & Design
THIS DOCUMENT HAS BEEN PREPARED BY RDG SPECIFICALLY FOR THE IOWA CLINIC - WAUKEE

PROJECT: THIS SET OF DRAWINGS IS FOR USE ON OTHER PROJECTS OR IN OTHER LOCATIONS WITHOUT THE EXPRESS WRITTEN APPROVAL AND PARTICIPATION OF RDG PLANNING & DESIGN, INC. REPRODUCTION OR CHANGES THAT HAVE OCCURRED DURING BID OR CONSTRUCTION PHASES. CONSTRUCTION DOCUMENTS, SPECIFICATIONS AND CHANGE DOCUMENTS REMAIN THE OFFICIAL CONSTRUCTION DOCUMENTS.

EXTERIOR ELEVATIONS SITE PLAN SUBMITTAL

A05.03-SP

DATE PRINTED: 8/29/2022 13:45 AM