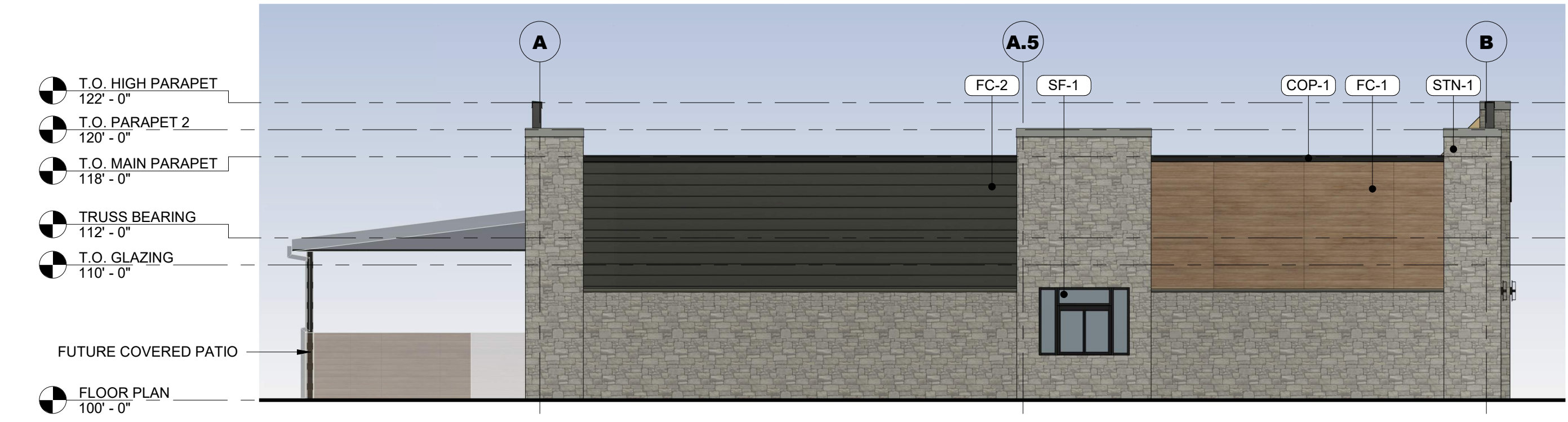
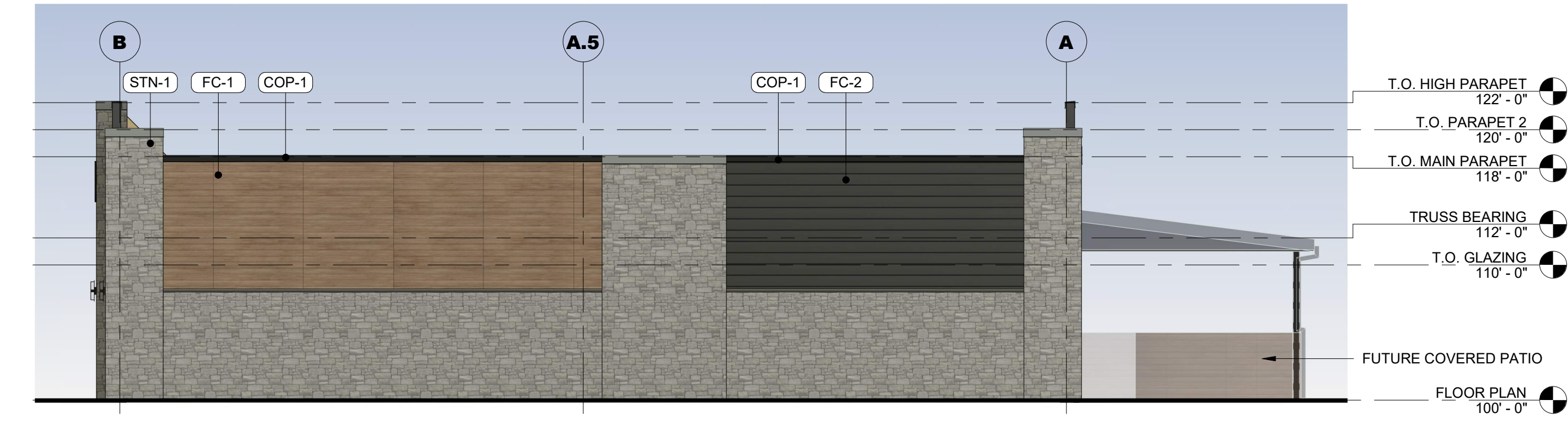


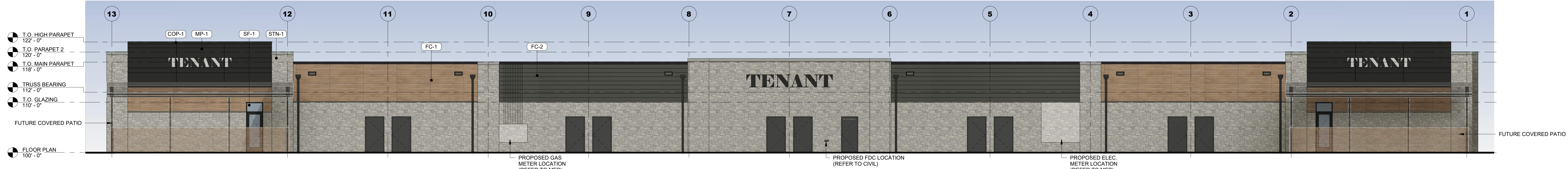
1 SOUTH ELEVATION
SCALE: 1/8" = 1'-0"



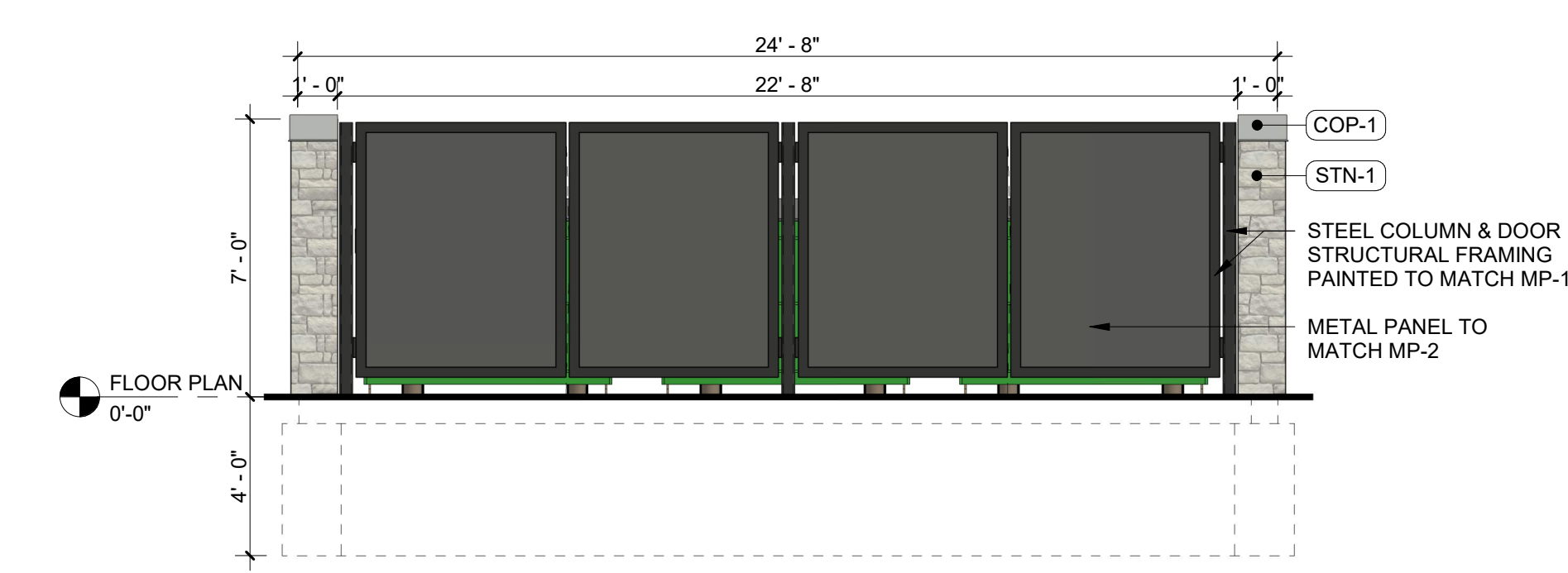
2 WEST ELEVATION
SCALE: 1/8" = 1'-0"



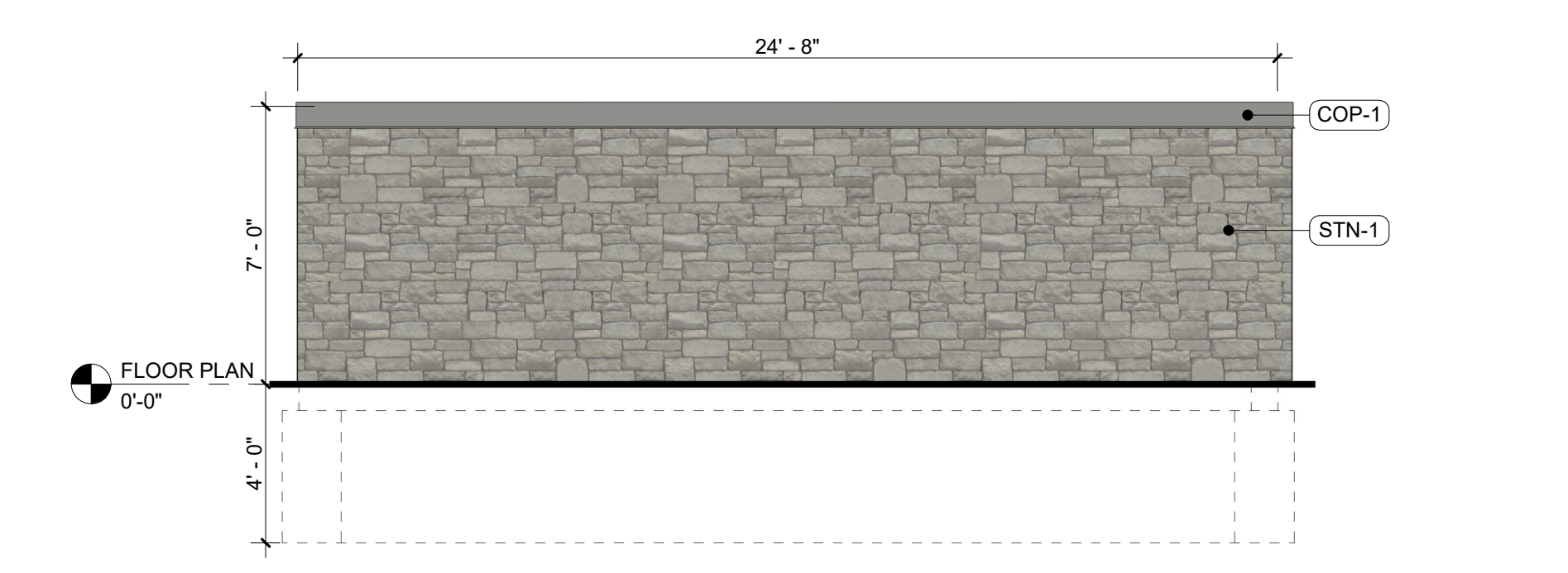
3 EAST ELEVATION
SCALE: 1/8" = 1'-0"



4 NORTH ELEVATION
SCALE: 1/8" = 1'-0"

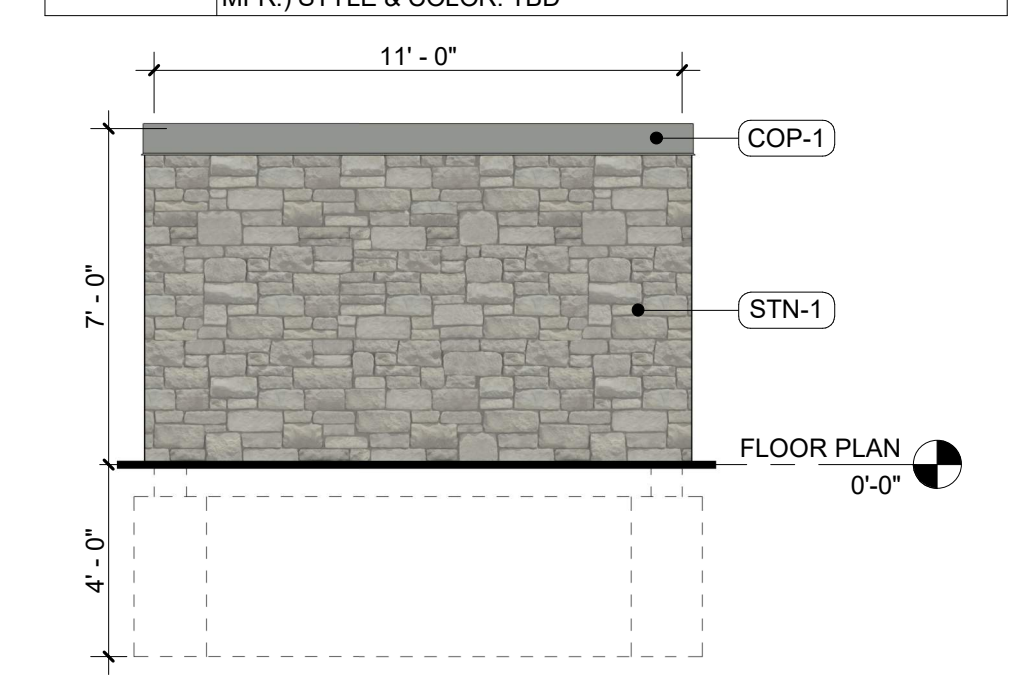


5 FRONT ELEVATION
SCALE: 1/4" = 1'-0"



6 REAR ELEVATION
SCALE: 1/4" = 1'-0"

EXTERIOR MATERIAL LEGEND	
MAT. LABEL	MATERIAL DESCRIPTION
COP-1	PRE-FINISHED METAL COPING SYSTEM; COLOR: MATCH ADJACENT MATERIAL
FC-1	FIBER CEMENT PANEL SYSTEM (INSTALLED PER MFR.); INSTALLED HORIZONTALLY; NICHHA VINTAGEWOOD (OR APPROVED EQUAL) COLOR: SPRUCE; TRIM: MATCH FIBER CEMENT MATERIAL
FC-2	FIBER CEMENT LAP SIDING SYSTEM (INSTALLED PER MFR.); INSTALLED HORIZONTALLY; HARDIEPLANK LAP SIDING (OR APPROVED EQUAL); FINISH: SMOOTH; COLOR: SLATE GRAY TO MATCH MP-2
MP-1	METAL CLADDING SYSTEM (INSTALLED PER MFR.); INSTALLED HORIZONTALLY W/ CONCEALED FASTENERS & JOINTS ALIGNED AS SHOWN; COLOR: BLACK
MP-2	METAL CLADDING SYSTEM (INSTALLED PER MFR.); INSTALLED HORIZONTALLY W/ CONCEALED FASTENERS & JOINTS ALIGNED AS SHOWN; COLOR: DARK GRAY
SF-1	T.B. ALUMINUM STOREFRONT FRAMING SYSTEM; COLOR: BLACK W/ 1" INSULATED VISION GLASS; CLEAR W/ LOW-E COATING
SILL-1	STONE SILL SYSTEM (INSTALLED PER MFR.); PROFILE: REFER TO DETAILS; SLOPED AWAY FROM BUILDING; COLOR: TBD
STN-1	MANUFACTURED STONE VENEER SYSTEM (INSTALLED PER MFR.); STYLE & COLOR: TBD



7 SIDE ELEVATION
SCALE: 1/4" = 1'-0"

MATERIAL CALCULATIONS			
SOUTH ELEVATION: 5,466 SF TOTAL			
PRIMARY MATERIALS:			
MP-1	=	523 SF	9.6%
MP-2	=	878 SF	16.1%
STN-1	=	1,292 SF	23.6%
SF-1	=	2,080 SF	38.1%
SECONDARY MATERIALS:			
FC-1	=	893 SF	12.6%
FC-2	=	0 SF	0%
WEST ELEVATION: 1,343 SF TOTAL			
PRIMARY MATERIALS:			
MP-1	=	0 SF	0%
MP-2	=	0 SF	0%
STN-1	=	768 SF	57.2%
SF-1	=	34 SF	2.5%
SECONDARY MATERIALS:			
FC-1	=	217 SF	16.2%
FC-2	=	324 SF	24.1%
NORTH ELEVATION: 5,172 SF TOTAL			
PRIMARY MATERIALS:			
MP-1	=	640 SF	12.4%
MP-2	=	0 SF	0%
STN-1	=	3,178 SF	61.4%
SF-1	=	67 SF	1.3%
SECONDARY MATERIALS:			
FC-1	=	677 SF	13.1%
FC-2	=	610 SF	11.8%
EAST ELEVATION: 1,323 SF TOTAL			
PRIMARY MATERIALS:			
MP-1	=	0 SF	0%
MP-2	=	0 SF	0%
STN-1	=	776 SF	58.7%
SF-1	=	0 SF	0%
SECONDARY MATERIALS:			
FC-1	=	327 SF	24.7%
FC-2	=	220 SF	16.6%
BUILDING TOTAL			
TOTAL AREA	=	13,304 SF	
SECONDARY MATERIALS	=	3,068 SF	23.1% (23%)