



**MOVING & STORAGE OF WAUKEE**  
1100 E Hickman Rd, Waukee, Iowa 50263



# MOVING & STORAGE OF WAUKEE

1100 E Hickman Rd, Waukee, Iowa 50263

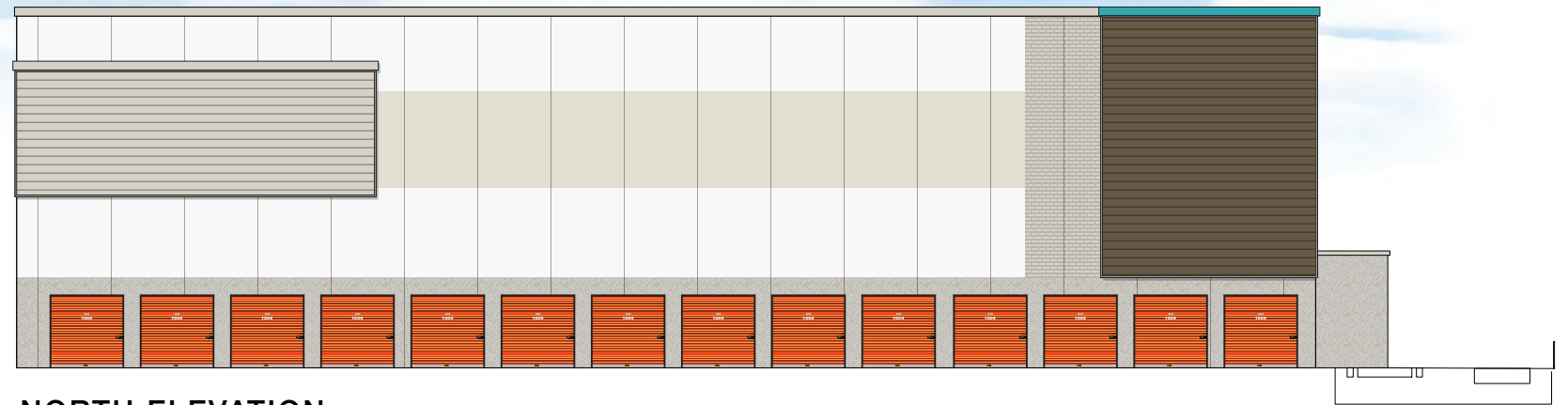


LOCALLY SOURCED PRE-CAST PANELS WITH LOWER AGGREGATE TEXTURE, UPPER BRICK IN-LAID PATTERN AND STUCCO WITH REVEALS

ARCHITECTURAL PANELING 2" PROFILE, PROVIDES ARTICULATION, DEPTH AND TEXTURE TO THE BUILDING

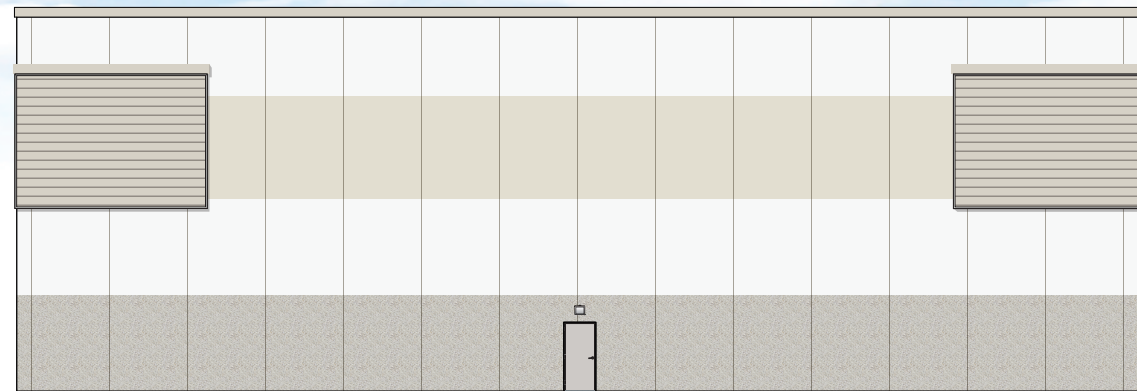
PAINT COLORS USED TO MAINTAIN THE SAME LEVEL OF NEIGHBORHOOD CONSISTENCY AND MATCH EXISTING BUILDING

ARCHITECTURAL FENESTRATION TO ENHANCE RETAIL UNIFORMITY IN THE AREA



**NORTH ELEVATION**

Scale: 1" = 20'



**EAST ELEVATION**

Scale: 1" = 20'



**WEST ELEVATION**

Scale: 1" = 20'

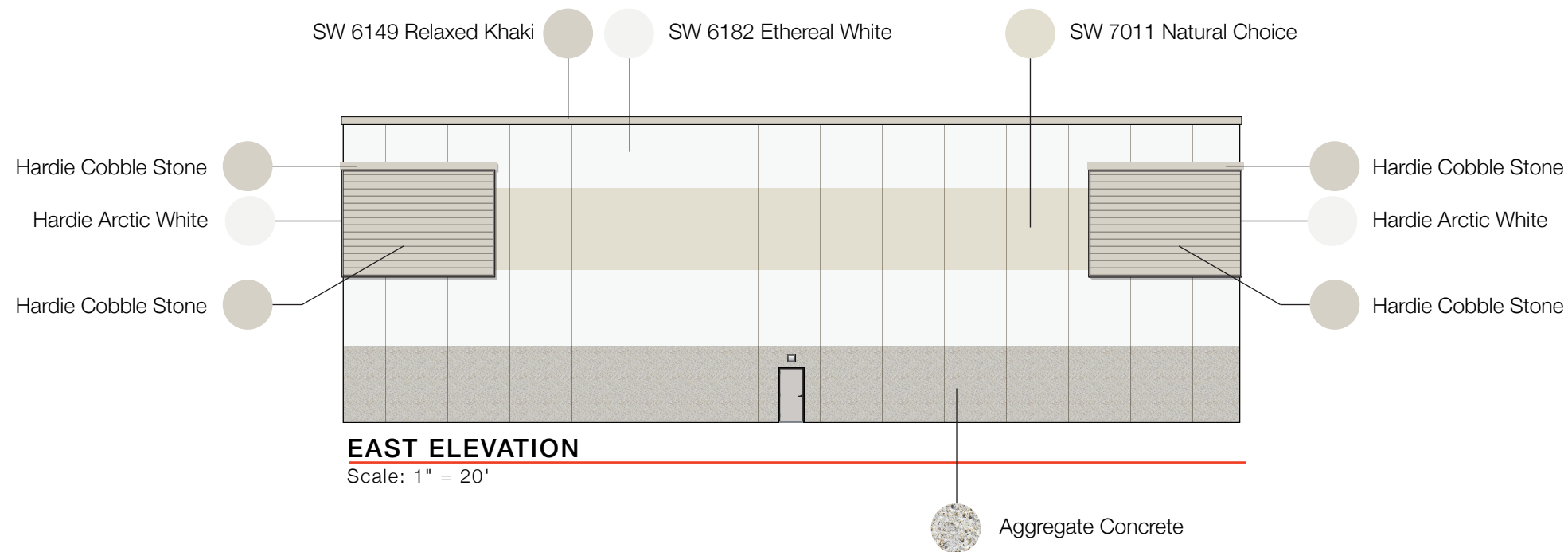
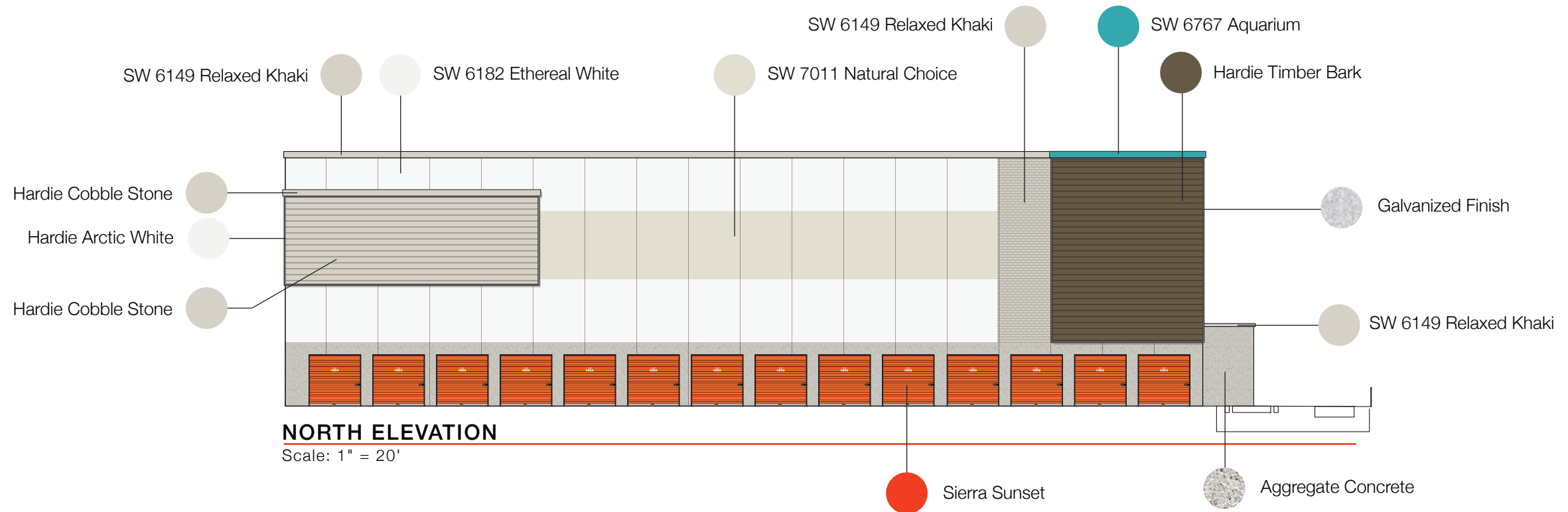


**SOUTH ELEVATION**

Scale: 1" = 20'

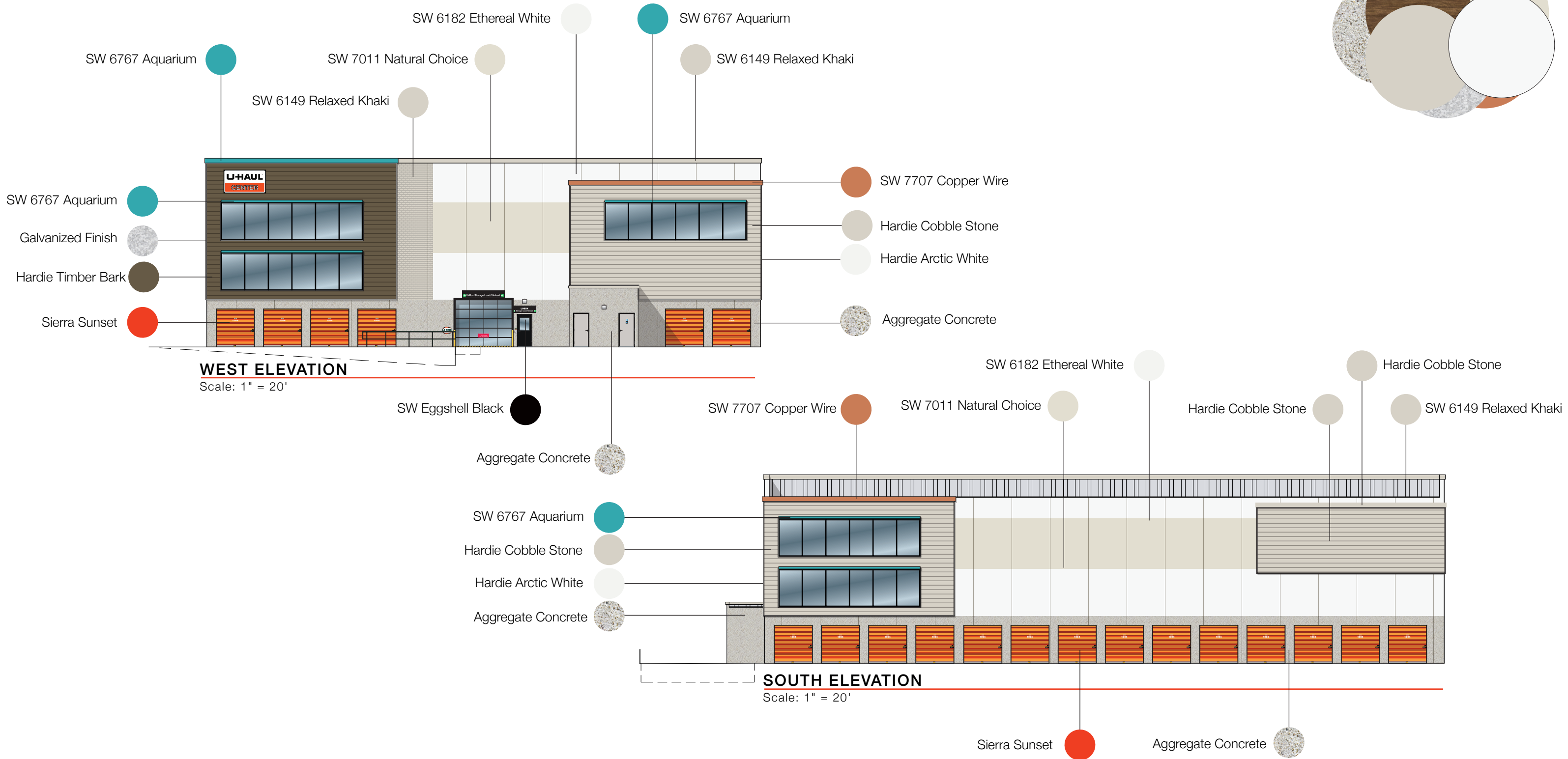
# MOVING & STORAGE OF WAUKEE

1100 E Hickman Rd, Waukee, Iowa 50263



# MOVING & STORAGE OF WAUKEE

1100 E Hickman Rd, Waukee, Iowa 50263



# MOVING & STORAGE OF WAUKEE

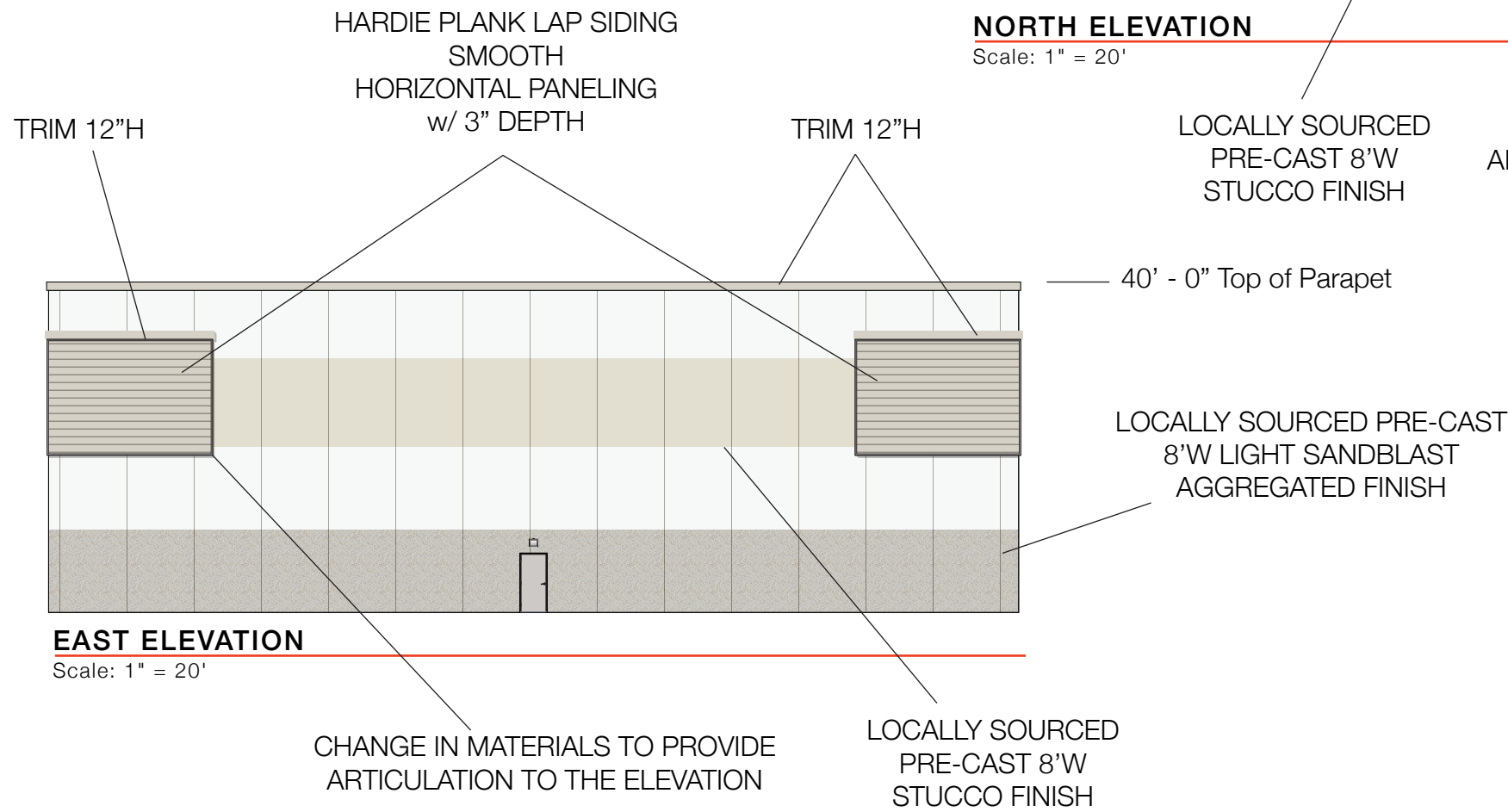
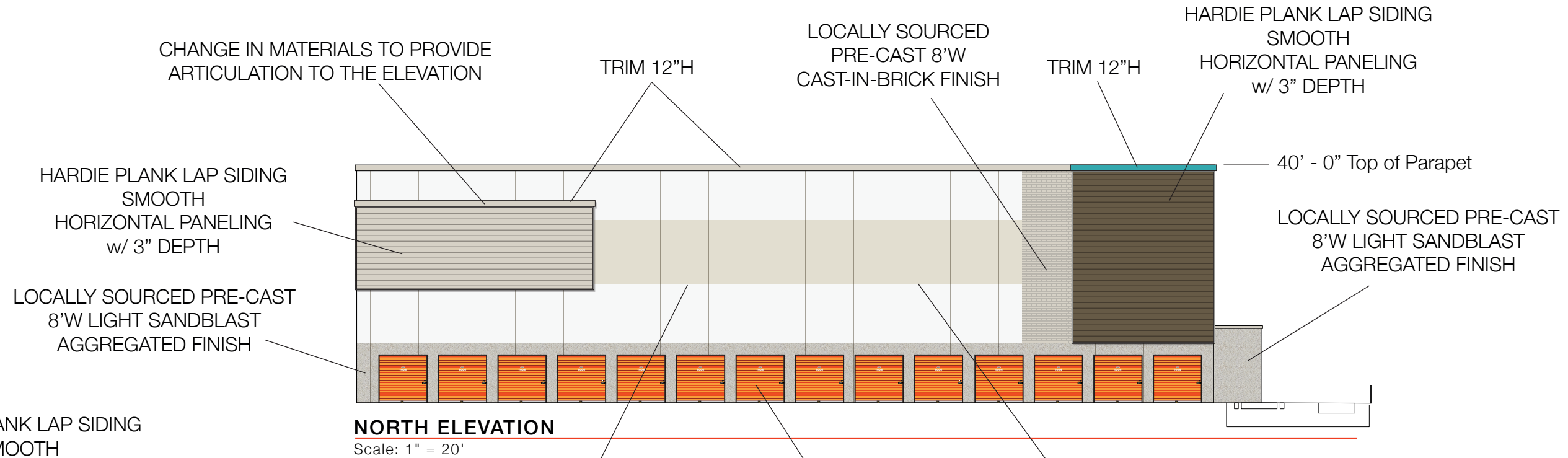
1100 E Hickman Rd, Waukee, Iowa 50263

## NORTH CALCULATIONS

TOTAL FACADE - 5868 SF  
 HARDIE PLANK - 560 SF - 9.54%  
 PRE-CAST CONCRETE - 4227 SF - 72.03%  
 WINDOWS - 0 SF - 0%  
 REAL DOORS - 0 SF - 0%  
 TRIM/DETAIL - 185 SF - 3.15%  
 ARCH PANEL DOORS - 896 SF - 15.27%

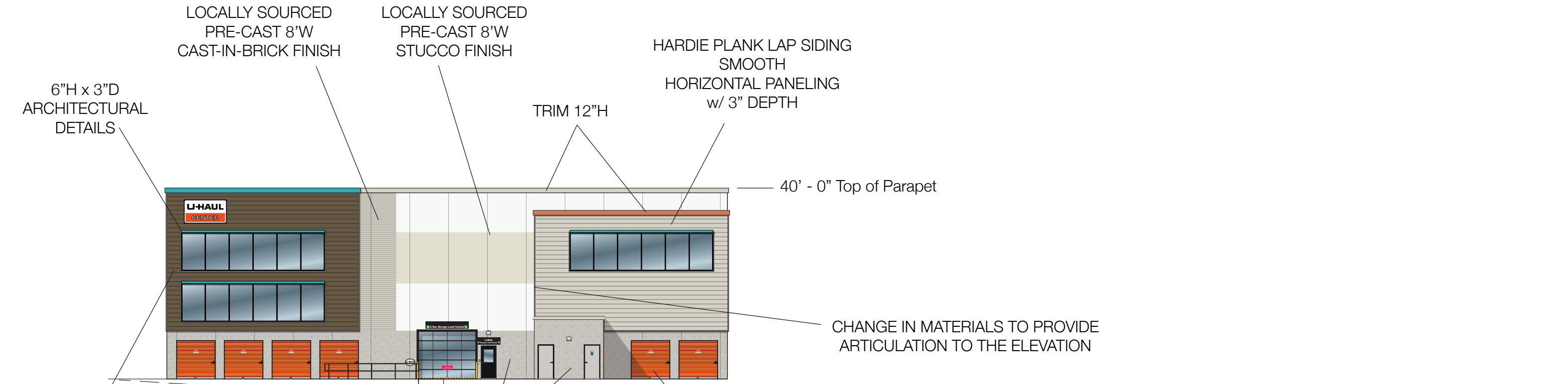
## EAST CALCULATIONS

TOTAL FACADE - 4693 SF  
 HARDIE PLANK - 560 SF - 11.93%  
 PRE-CAST CONCRETE - 3950 SF - 84.17%  
 WINDOWS - 0 SF - 0%  
 REAL DOORS - 24 SF - 0.5%  
 TRIM/DETAIL - 159 SF - 3.38%  
 ARCH PANEL DOORS - 0 SF - 0%



**MOVING & STORAGE OF WAUKEE**

1100 E Hickman Rd, Waukee, Iowa 50263



**WEST ELEVATION**

Scale: 1" = 20'

HARDIE PLANK LAP SIDING  
SMOOTH  
HORIZONTAL PANELING  
w/ 3" DEPTH

LOCALLY SOURCED PRE-CAST  
8'W LIGHT SANDBLAST  
AGGREGATED FINISH

ARCHITECTURAL DETAILS

6"H x 3"D  
ARCHITECTURAL DETAILS

40' - 0" Top of Parapet

LOCALLY SOURCED PRE-CAST  
8'W LIGHT SANDBLAST  
AGGREGATED FINISH

HARDIE PLANK LAP SIDING  
SMOOTH  
HORIZONTAL PANELING  
w/ 3" DEPTH

TRIM 12"H

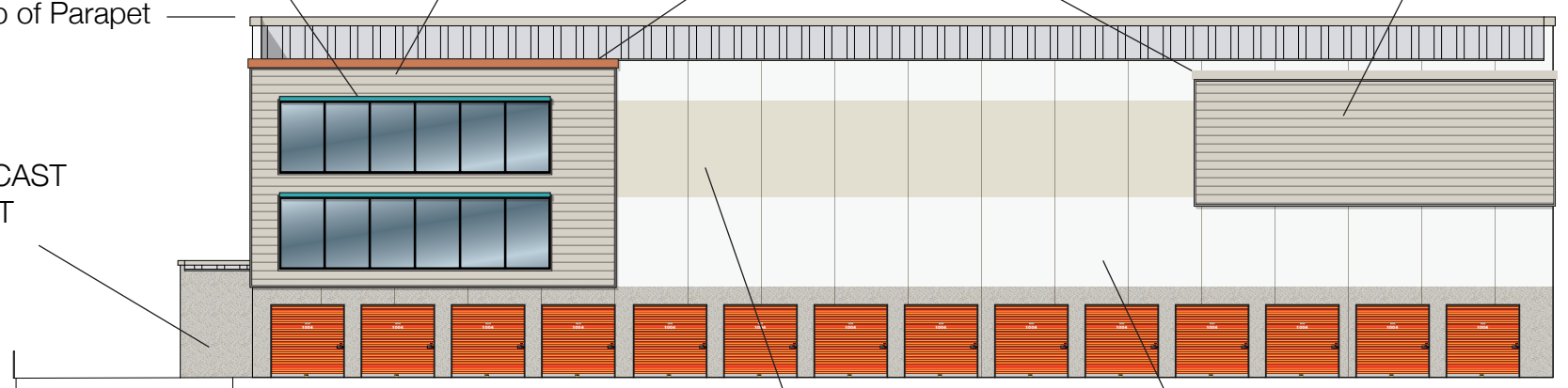
HARDIE PLANK LAP SIDING  
SMOOTH  
HORIZONTAL PANELING  
w/ 3" DEPTH

**WEST CALCULATIONS**

- TOTAL FACADE - 4693 SF
- HARDIE PLANK - 1401.31 SF - 29.86%
- PRE-CAST CONCRETE - 2227 SF - 39.13%
- WINDOWS - 720 SF - 15.34%
- REAL DOORS - 192 SF - 4.09%
- TRIM/DETAIL - 158.98 SF - 3.38%
- ARCH PANEL DOORS - 384 SF - 8.18%

**SOUTH CALCULATIONS**

- TOTAL FACADE - 5188 SF
- HARDIE PLANK - 1052 SF - 20.27%
- PRE-CAST CONCRETE - 2534 SF - 48.84%
- WINDOWS - 480 SF - 9.25%
- REAL DOORS - 0 SF - 0%
- TRIM/DETAIL - 226 SF - 3.47%
- ARCH PANEL DOORS - 896 SF - 17.27%



**SOUTH ELEVATION**

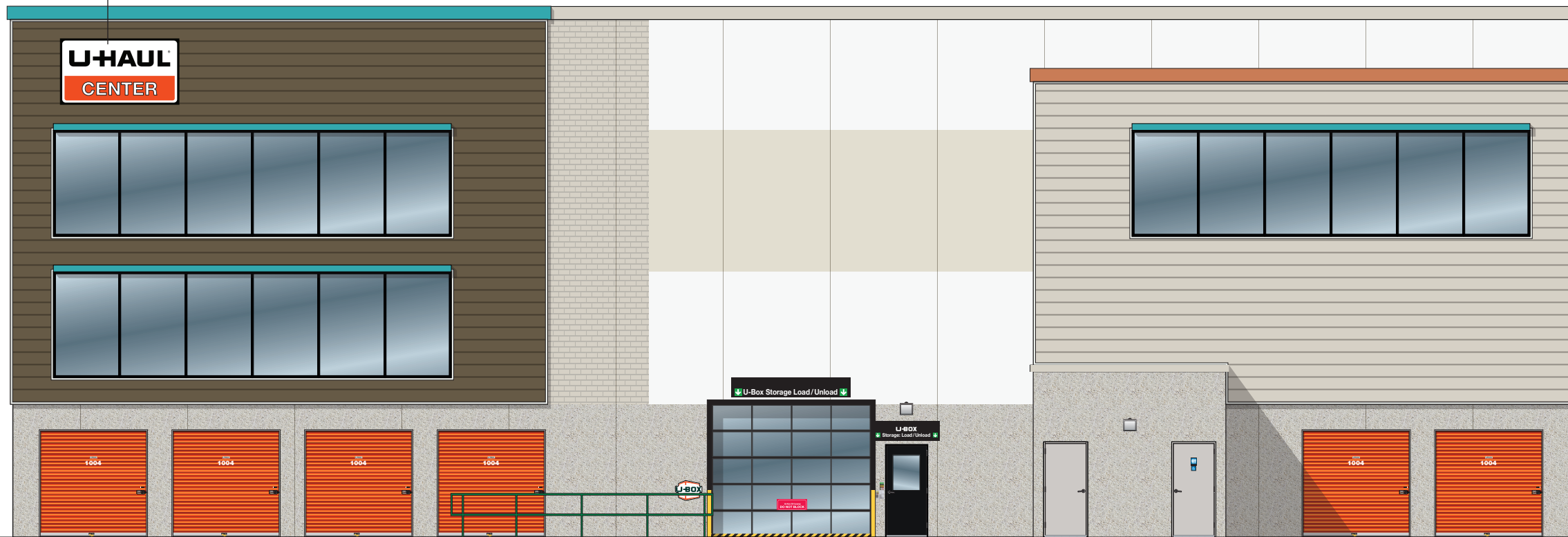
Scale: 1" = 20'

CHANGE IN PAINT TO PROVIDE  
ARTICULATION TO THE ELEVATION

LOCALLY SOURCED  
PRE-CAST 8'W  
STUCCO FINISH



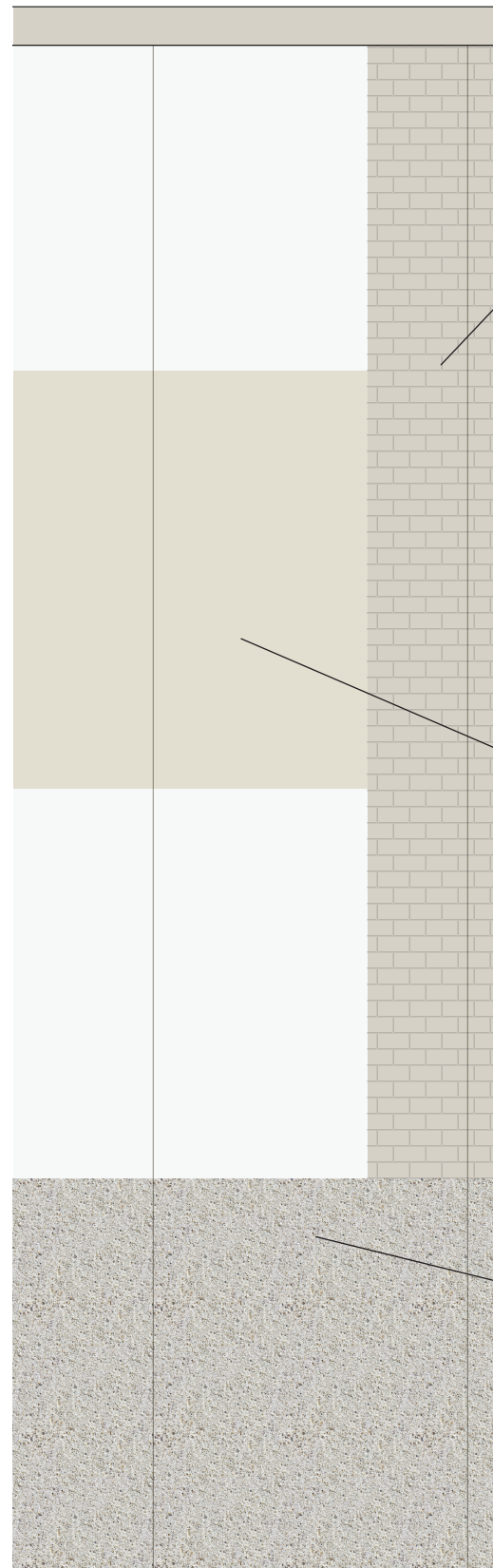
LIT CABINET SIGN  
9'W X 5'H  
45 SQFT



**WEST ELEVATION**  
Scale: 1" = 10'

# MOVING & STORAGE OF WAUKEE

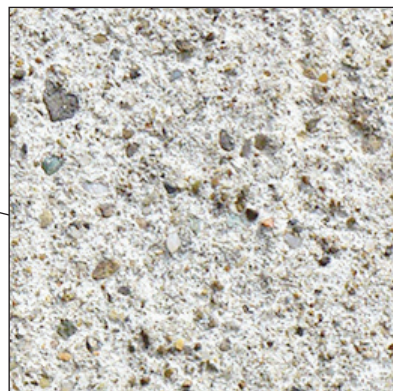
1100 E Hickman Rd, Waukee, Iowa 50263



CAST-IN BRICK  
PRE-CAST CONCRETE EXAMPLE



LOCALLY SOURCED  
PRE-CAST 8'W  
STUCCO FINISH



LIGHT SANDBLAST AGGREGATED  
PRE-CAST CONCRETE EXAMPLE



HARDIEPLANK® LAP SIDING  
**SELECT CEDARMILL®**

Our natural cedar look has a soft texture that mimics wood.



HARDIETRIM® BOARDS  
**4/4 RUSTIC**

With a wood-like texture, this trim has vintage appeal—and it's warp- and rot-resistant. Available in Statement Collection products, Dream Collection products, or primed for paint.

