

PLAN VIEW

FOR NEW MANHOLE CONSTRUCTION, CONTRACTOR TO MINIMIZE PIPE PROTRUSION (L)

REFER TO MANHOLE SIZING CHART TO ENSURE PROJECT SPECIFIC DESIGN FEASIBILITY

ENERGY DISSIPATOR

SKIMMER

INLET

OUTLET

STRUCTURE DIAMETER	MAXIMUM PIPE DIAMETER*		
	DISSIPATOR ONLY	SKIMMER ONLY	DISSIPATOR & SKIMMER
48"	27"	24"	12"
60"	36"	30"	24"
72"	48"	42"	36"
84"	60"	48"	36"
96"	72"	60"	48"

NOTE 1: THE PRESERVER ENERGY DISSIPATOR WAS DESIGNED AND TESTED TO FUNCTION WITH OR WITHOUT A SKIMMER. DISSIPATORS & SKIMMERS CAN BE UTILIZED IN TANDER OR INDEPENDENTLY.

RECOMMENDED TO PROVIDE ADEQUATE SPACING BETWEEN COMPONENTS FOR ACCESS & MAINTENANCE. REFER TO MANHOLE SIZING CHARTS FOR MORE DETAILED STRUCTURE SIZING OR CONTACT MOMENTUM FOR PRODUCT SPECIFIC DETAILS. PRESERVER COMPONENTS ACCOMMODATE PIPE SIZES UP TO 48" DIAMETER.

CROSS SECTION AA

ENERGY DISSIPATOR

SKIMMER

INLET

OUTLET

SUMP MANHOLE

NOTE 2: MINIMIZE ELEVATION DIFFERENCE BETWEEN INLET AND OUTLET INLET FOR THE PRESERVER TO FUNCTION AS DESIGNED.

NOTE 3: STOCK SKIMMERS HAVE A MINIMUM FREEBOARD DEPTH OF 1.0'. FOR GREATER FREEBOARD DEPTHS, DESIGNERS CAN USE THE SKIMMER, OR USE A CUSTOMIZED SKIMMER. FOR CUSTOM DESIGNS, AND/OR PROJECT SPECIFIC DETAILS, CONTACT MOMENTUM.

PART NUMBER**	PIPE DIAMETER	ALLOWABLE PEAK FLOW
D15/S15	6"-10"	20 CFS
D21/S21	16"-24"	35 CFS
D27/S27	22"-27"	60 CFS
D36/S36	28"-36"	100 CFS
D48/S48	37"-48"	175 CFS

** 3" - DISSIPATOR PLACED AT INLET(S)
3" - SKIMMER PLACED AT OUTLET

Not to Scale

THE PRESERVER - STANDARD INSTALL DETAIL

ENERGY DISSIPATOR AND/OR SKIMMER

CONCEPTUAL PLAN (SEE DRAWING) THIS DRAWING IS FOR INFORMATION ONLY. IT IS NOT A CONTRACT DOCUMENT. THE USER SHALL BE RESPONSIBLE FOR THE DESIGN AND CONSTRUCTION OF THE SYSTEM. PRESERVER ENVIRONMENTAL, LLC DOES NOT WARRANT THE ACCURACY OF THE INFORMATION PROVIDED HEREIN. PRESERVER ENVIRONMENTAL, LLC DOES NOT WARRANT THE ACCURACY OF THE INFORMATION PROVIDED HEREIN. PRESERVER ENVIRONMENTAL, LLC DOES NOT WARRANT THE ACCURACY OF THE INFORMATION PROVIDED HEREIN.

PRELIMINARY

WAUKEE TOWNE CENTER PLAT 2
WAUKEE, IOWA
DETAILS

DATE: 2022-10-07 - FOURTH SUBMITTAL
2022-09-16 - THIRD SUBMITTAL
2022-08-24 - SECOND SUBMITTAL
2022-07-26 - FIRST SUBMITTAL

DATE OF SURVEY: JAN. 05, 2022

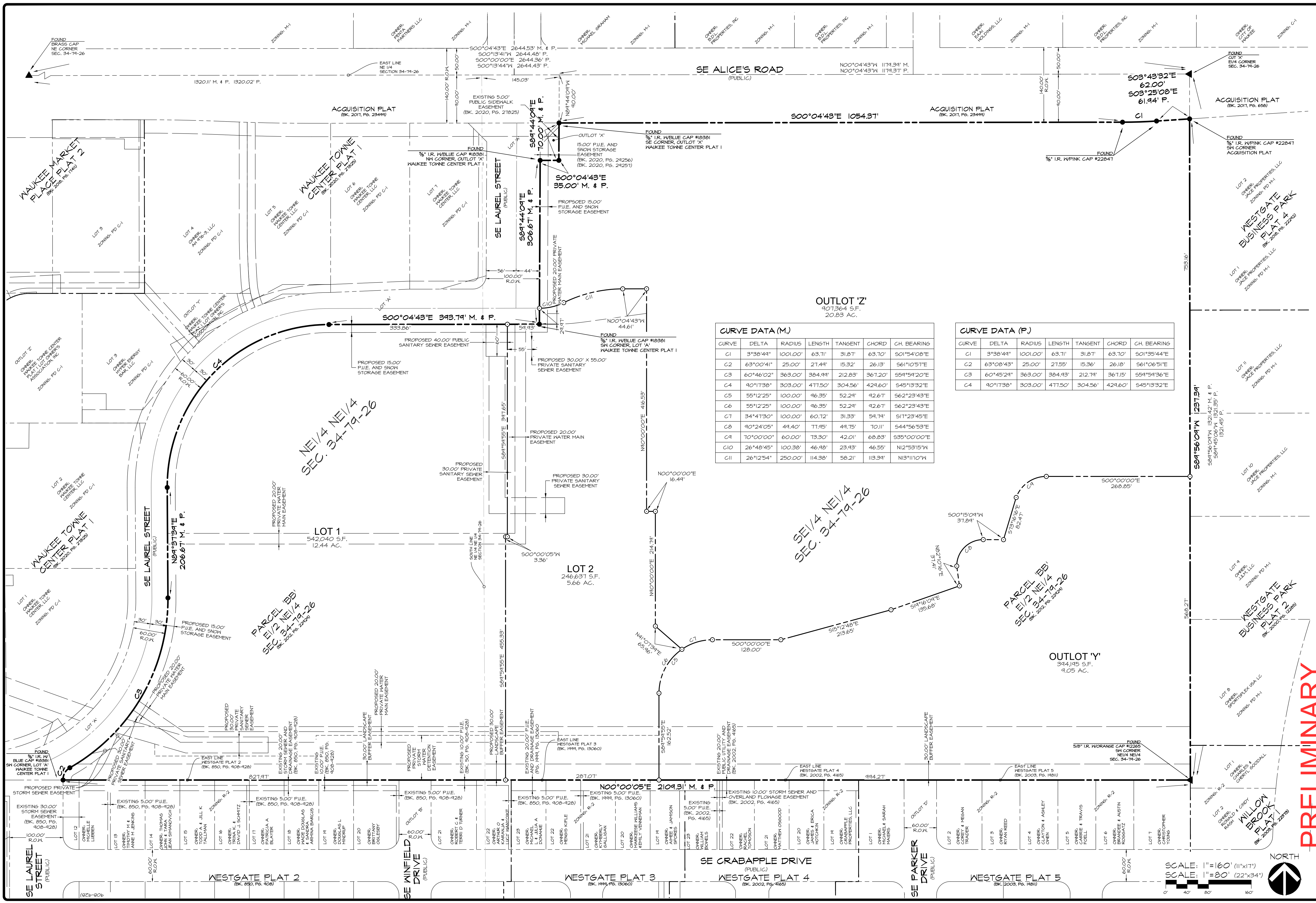
DESIGNED BY: EHA

DRAWN BY: MKI

Civil Engineering Consultants, Inc.
2400 86th Street Unit 12 · Des Moines, Iowa 50322
515.276.4884 · mail@cecinc.com

CEC

Q:\A-FILES\A-2100\A2103_1_1.dwg, 10/7/2022 2:56:53 PM, smckinley, 1:1



CURVE DATA (M.)

CURVE	DELTA	RADIUS	LENGTH	TANGENT	CHORD	CH. BEARING
C1	3°38'44"	1001.00'	63.71'	31.81'	63.70'	S01°54'08"E
C2	63°00'41"	25.00'	27.44'	15.32'	26.13'	S61°10'51"E
C3	60°46'02"	363.00'	384.41'	212.83'	367.20'	S54°54'20"E
C4	40°11'38"	303.00'	477.50'	304.56'	424.60'	S45°13'32"E
C5	55°12'25"	100.00'	46.35'	52.24'	42.61'	S62°23'43"E
C6	55°12'25"	100.00'	46.35'	52.24'	42.61'	S62°23'43"E
C7	34°41'30"	100.00'	60.72'	31.33'	54.71'	S17°23'45"E
C8	40°24'05"	44.40'	71.45'	44.75'	70.11'	S44°56'53"E
C9	70°00'00"	60.00'	73.30'	42.01'	68.83'	S35°00'00"E
C10	26°48'45"	100.38'	46.48'	23.43'	46.55'	N12°53'15"W
C11	26°12'54"	250.00'	114.38'	58.21'	113.34'	N13°11'10"W

CURVE DATA (P.)

CURVE	DELTA	RADIUS	LENGTH	TANGENT	CHORD	CH. BEARING
C1	3°38'44"	1001.00'	63.71'	31.81'	63.70'	S01°54'08"E
C2	63°00'43"	25.00'	27.55'	15.36'	26.18'	S61°06'51"E
C3	60°45'21"	363.00'	384.43'	212.74'	367.15'	S54°54'36"E
C4	40°11'38"	303.00'	477.50'	304.56'	424.60'	S45°13'32"E

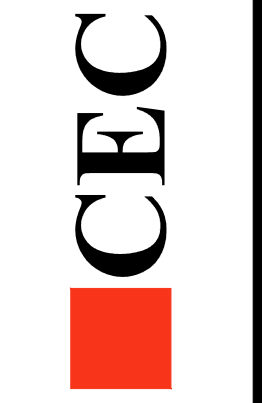
PRELIMINARY

WAUKEE TOWNE CENTER PLAT 2
WAUKEE, IOWA
DIMENSION PLAN

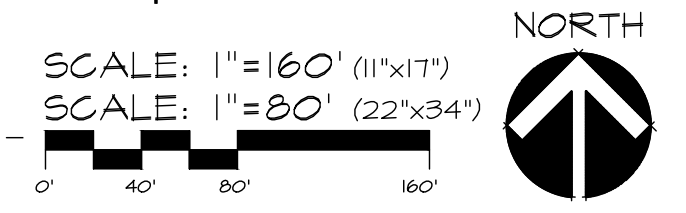
DATE: 2022-10-07 - FOURTH SUBMITTAL
2022-09-16 - THIRD SUBMITTAL
2022-08-24 - SECOND SUBMITTAL
2022-07-26 - FIRST SUBMITTAL

DATE OF SURVEY: JAN. 05, 2022

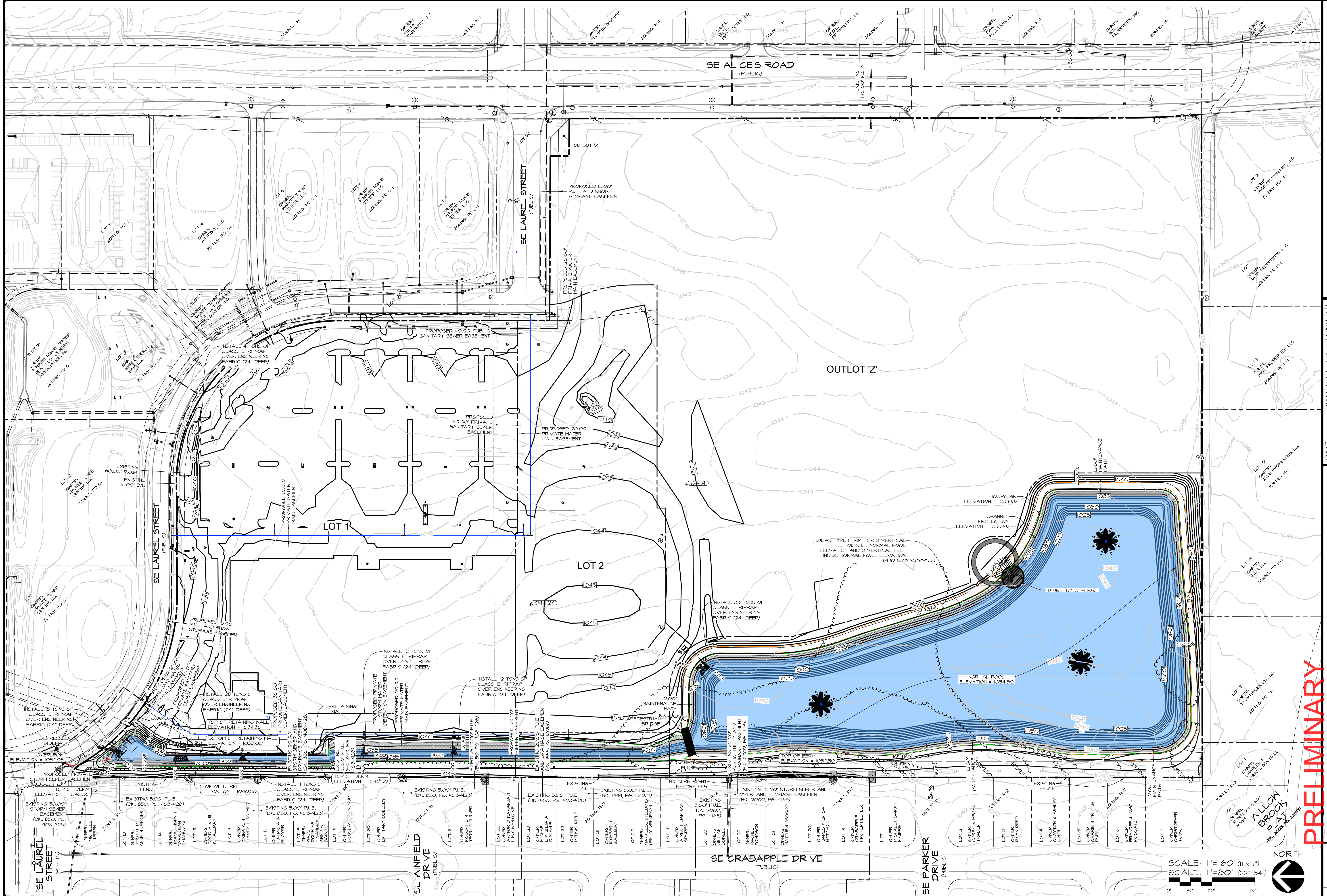
DESIGNED BY: EHA
DRAWN BY: NMI



Civil Engineering Consultants, Inc.
2400 86th Street Unit 12 Des Moines, Iowa 50322
515.276.4884 mail@cecinc.com



q:\A-FILES\A-2100\A2103_c3d drawings\Plan\A2103 (02) PP.dwg, 10/7/2022 2:58:01 PM, smckinley, 1:1



PRELIMINARY

WAUKEE TOWNE CENTER PLAT 2
WAUKEE, IOWA
GRADING PLAN

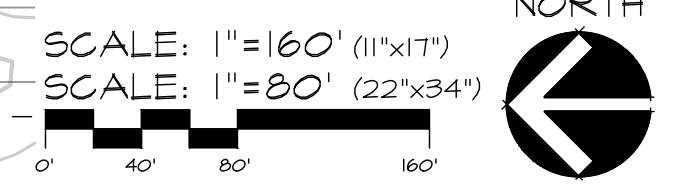
DATE: 2022-10-07 - FOURTH SUBMITTAL
 2022-09-16 - THIRD SUBMITTAL
 2022-08-24 - SECOND SUBMITTAL
 2022-07-26 - FIRST SUBMITTAL

DATE OF SURVEY: JAN. 05, 2022

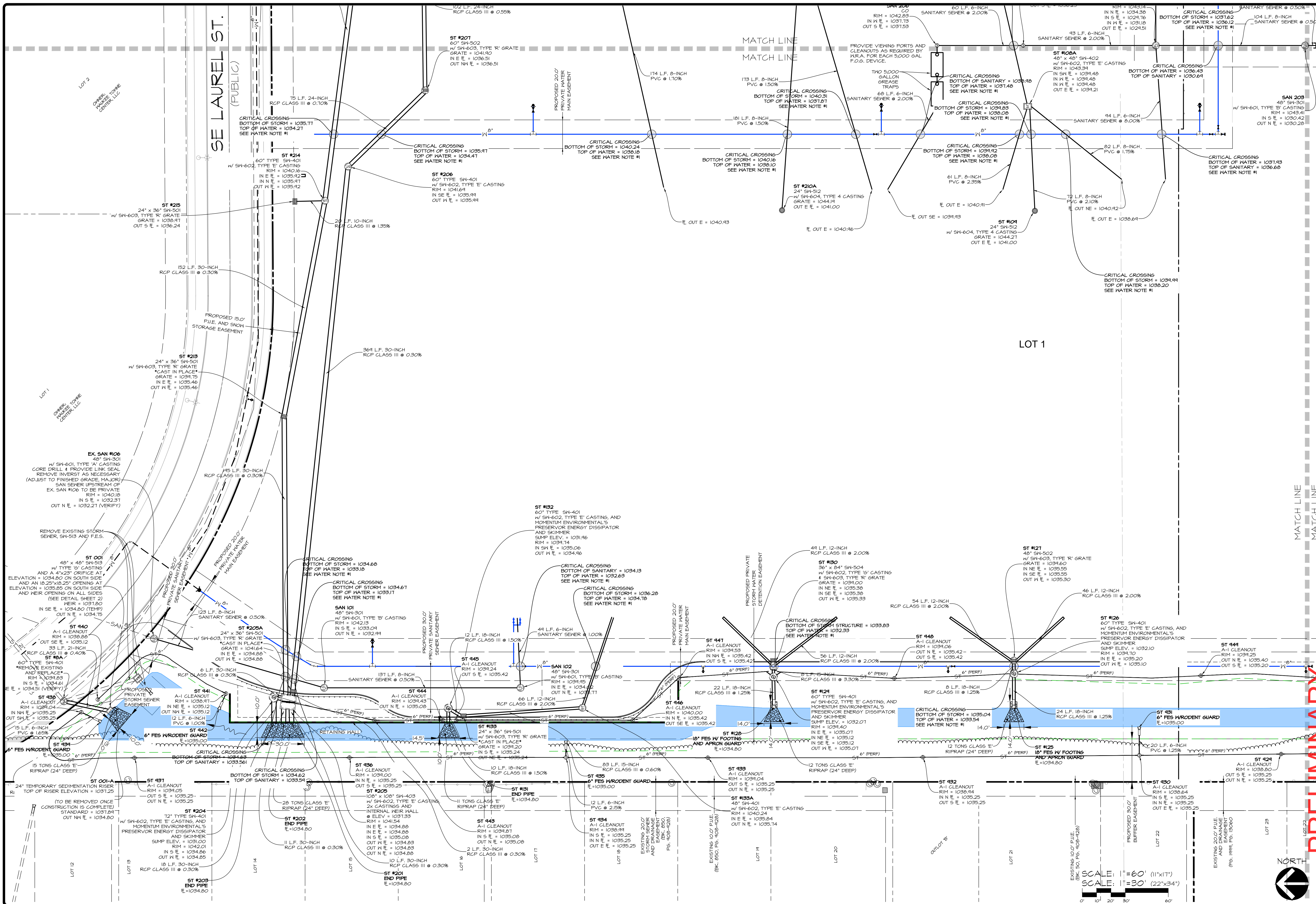
DESIGNED BY: EHA
 DRAWN BY: MKM

SHEET 4 OF 4
A-2103

CEC
 Civil Engineering Consultants, Inc.
 2400 86th Street Unit 12 · Des Moines, Iowa 50322
 515.276.8884 · mail@cecinc.com



Q:\A-FILES\A-2100\A2157_C3D Drawings\Construction Documents\Site Plan\A2157_08 UTILITY - SAN & STORM.dwg, 10/7/2022 2:59:18 PM, sanckmley, 1:1



PRELIMINARY

WAUKEE TOWNE CENTER PLAT 2
UTILITY PLAN - NORTHWEST SANITARY AND STORM SEWER

DATE: 2022-10-07 - FOURTH SUBMITTAL
 2022-09-16 - THIRD SUBMITTAL
 2022-08-24 - SECOND SUBMITTAL
 2022-07-26 - FIRST SUBMITTAL

DATE OF SURVEY: JAN. 05, 2022
 DESIGNED BY: EHA
 DRAWN BY: NMI

Civil Engineering Consultants, Inc.
 2400 86th Street Unit 12 Des Moines, Iowa 50322
 515.276.4884 mail@cecinc.com

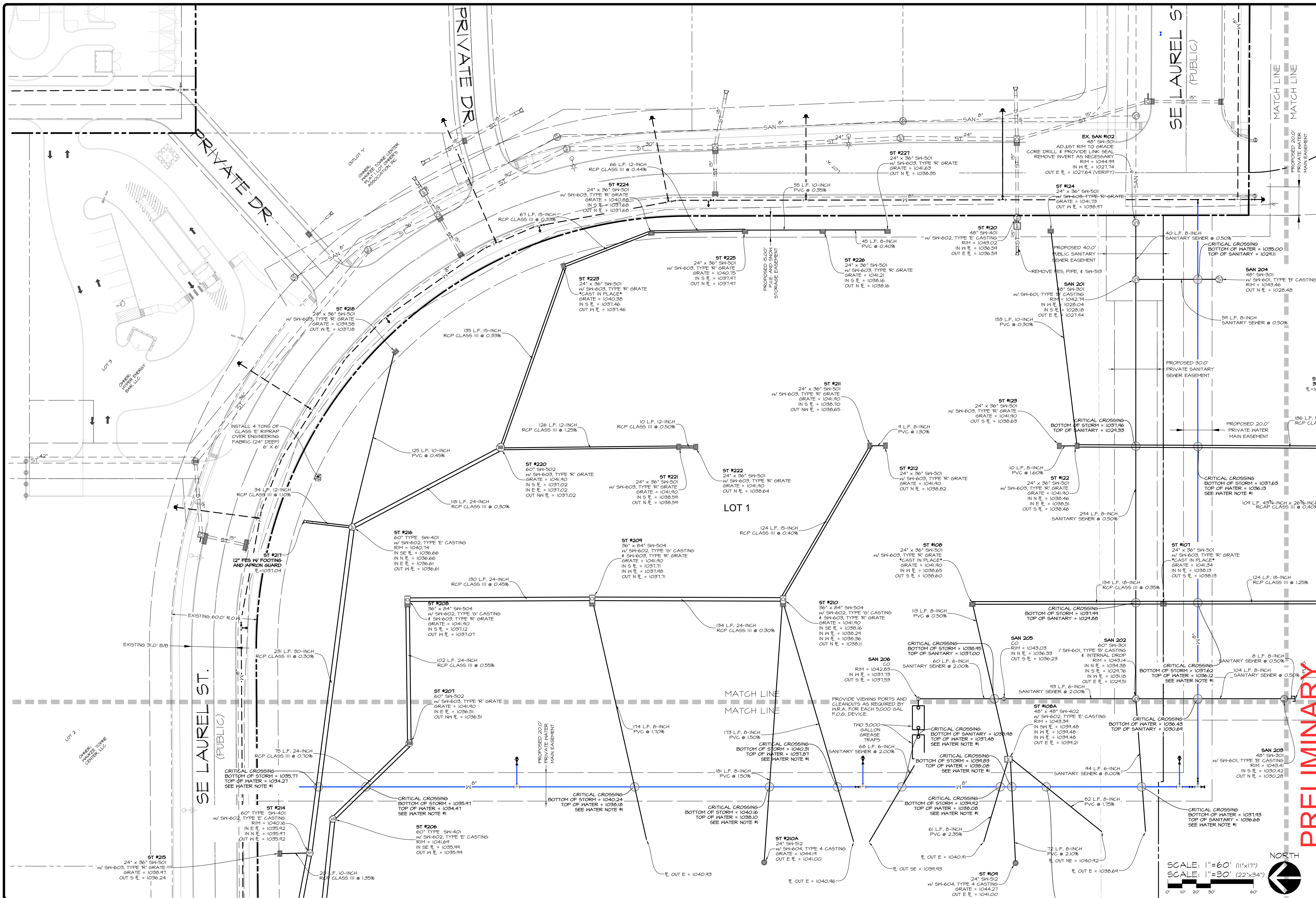
CEC

SHEET 9 OF 9
 A-2163

SCALE: 1" = 60' (11"x17")
 SCALE: 1" = 30' (22"x34")

NORTH

Q:\A-FILES\A-2100\A2157_C3D Drawings\Construction Documents\Site Plan\A2157 (08) UTILITY - SAN & STORM.dwg, 10/7/2022 2:59:33 PM, sanckinley, 1:1



DATE:	2022-10-07 - FOURTH SUBMITTAL	DATE:	JAN. 05, 2022
	2022-09-16 - THIRD SUBMITTAL	DESIGNED BY:	EHA
	2022-08-24 - SECOND SUBMITTAL	DRAWN BY:	NMI
	2022-07-26 - FIRST SUBMITTAL		

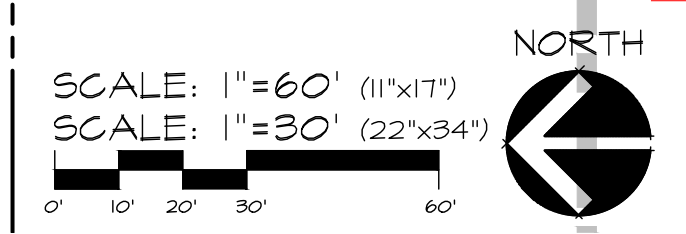
PRELIMINARY

WAUKEE TOWNE CENTER PLAT 2
 WAUKEE, IOWA
 UTILITY PLAN - NORTHEAST SANITARY AND STORM SEWER

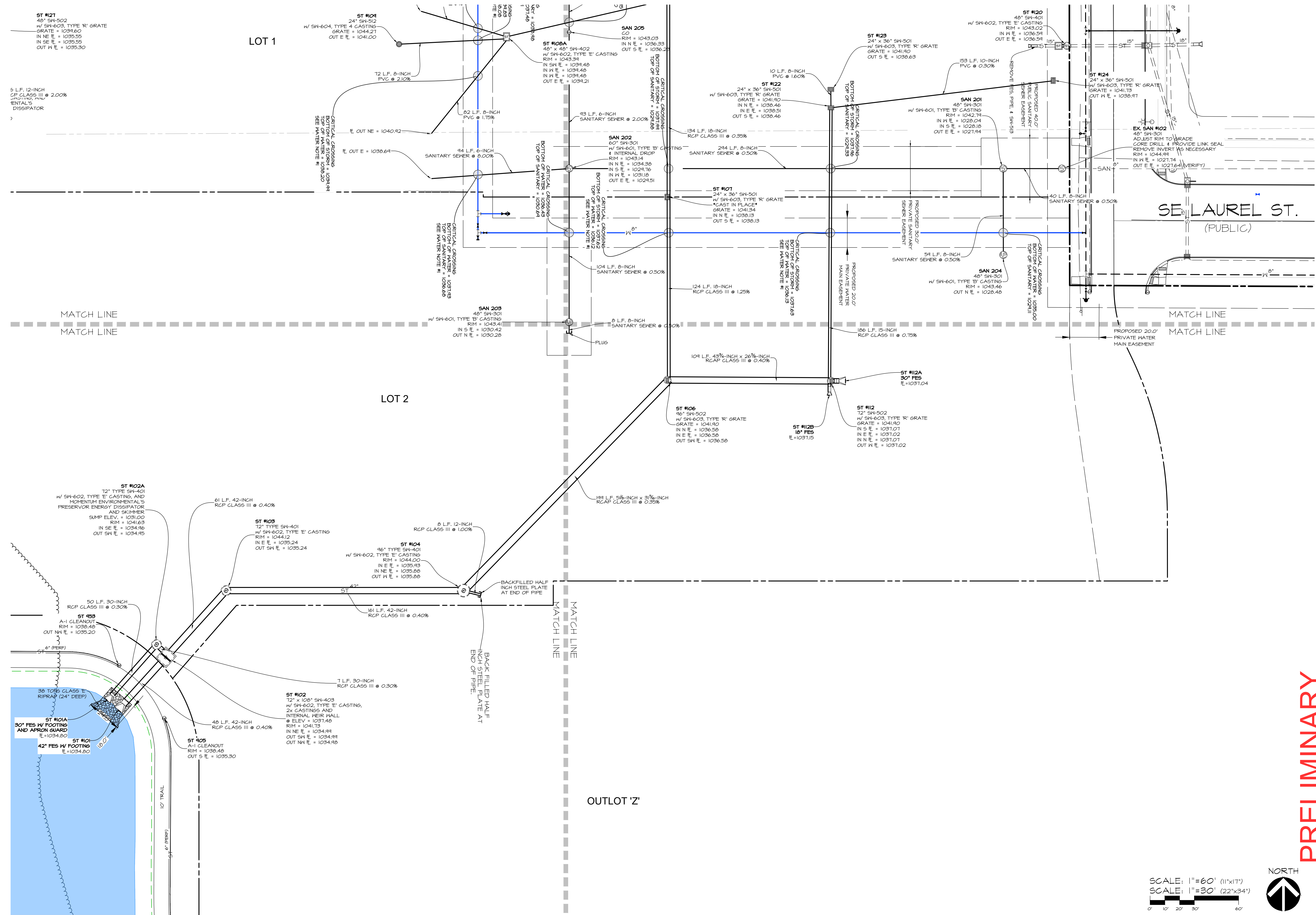
SHEET
 OF 9
 A-2163

Civil Engineering Consultants, Inc.
 2400 86th Street Unit 12 · Des Moines, Iowa 50322
 515.276.4884 · mail@cecinc.com

CEC



q:\A-FILES\A-2100\A2157_C3D Drawings\Construction Documents\Site Plan\A2157 (08) UTILITY - SAN & STORM.dwg, 10/7/2022 2:59:40 PM, sanckinley, 1:1

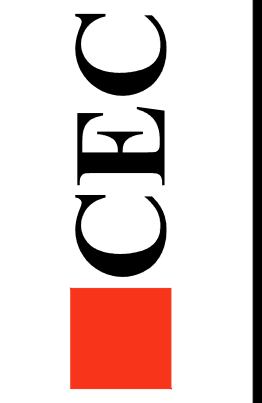


PRELIMINARY

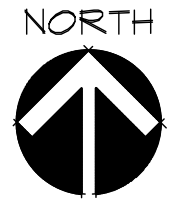
WAUKEE TOWNE CENTER PLAT 2
WAUKEE, IOWA
UTILITY PLAN - CENTRAL SANITARY AND STORM SEWER

DATE:	2022-10-07 - FOURTH SUBMITTAL
	2022-09-16 - THIRD SUBMITTAL
	2022-08-24 - SECOND SUBMITTAL
	2022-07-26 - FIRST SUBMITTAL
DATE OF SURVEY:	JAN. 05, 2022
DESIGNED BY:	EHA
DRAWN BY:	MM

Civil Engineering Consultants, Inc.
2400 86th Street Unit 12 Des Moines, Iowa 50322
515.276.4884 mail@cecinc.com

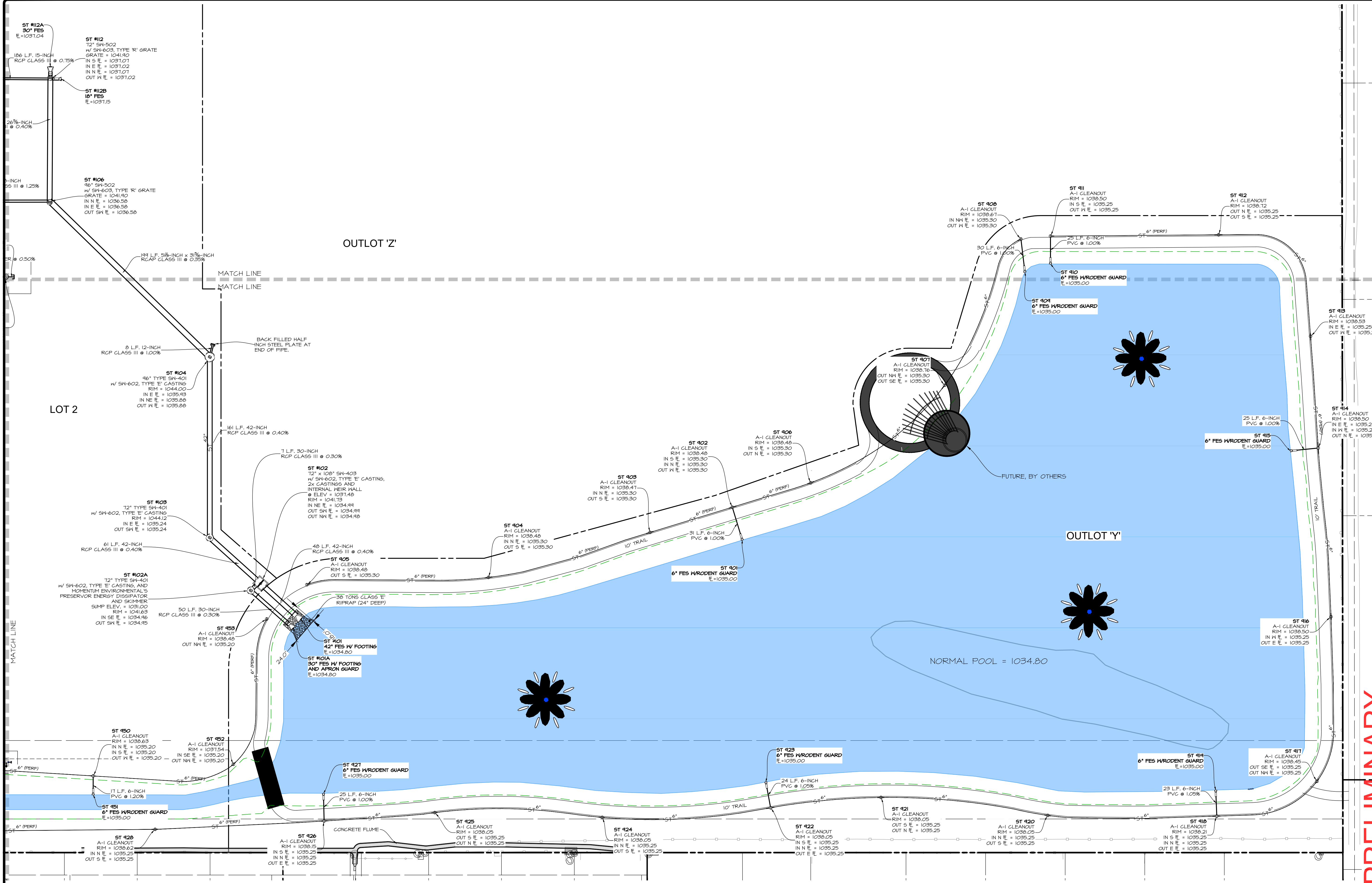


SCALE: 1"=60' (11"x17")
SCALE: 1"=30' (22"x34")



SHEET
OF 9
A-2163

Q:\A-FILES\A-2100\A2157_C3D Drawings\Construction Documents\Site Plan\A2157 (08) UTILITY - SAN & STORM.dwg, 10/7/2022 2:59:48 PM, sanckinley, 1:1

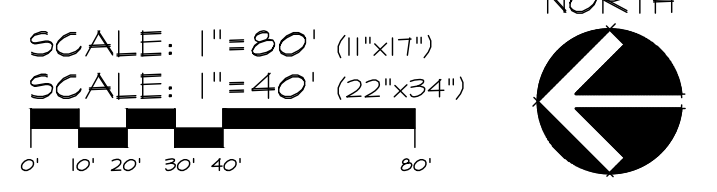


PRELIMINARY

WAUKEE TOWNE CENTER PLAT 2
 WAUKEE, IOWA
UTILITY PLAN - SOUTH SANITARY AND STORM SEWER

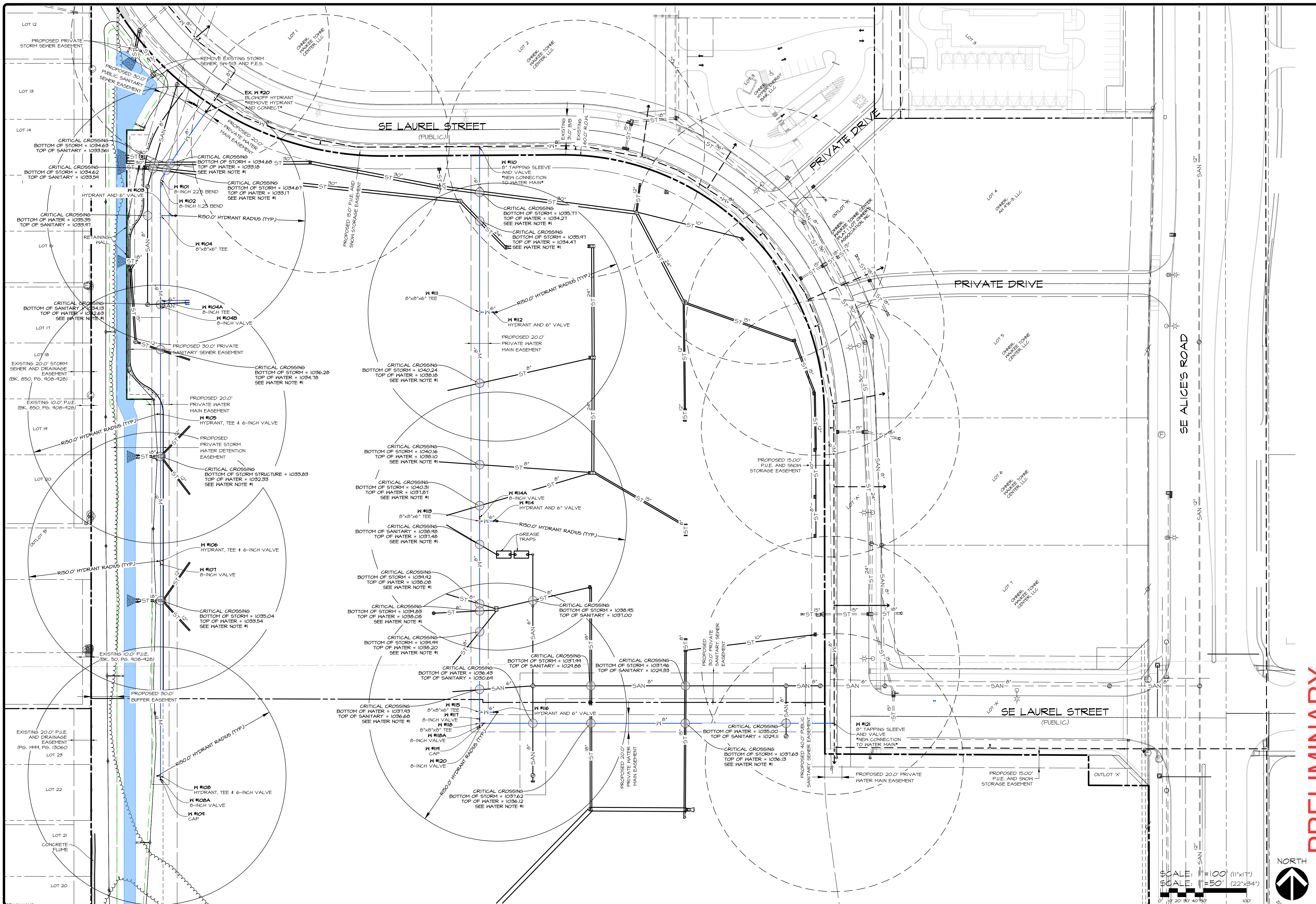
DATE: 2022-10-07 - FOURTH SUBMITTAL
 2022-09-16 - THIRD SUBMITTAL
 2022-08-24 - SECOND SUBMITTAL
 2022-07-26 - FIRST SUBMITTAL
 DATE OF SURVEY: JAN. 05, 2022
 DESIGNED BY: EHA
 DRAWN BY: NMI

CEC
 Civil Engineering Consultants, Inc.
 2400 86th Street Unit 12 Des Moines, Iowa 50322
 515.276.8884 mail@cecinc.com



SHEET
 OF 9
 A-2163

Q:\A-FILES\A-2100\A2157_C3D Drawings\Construction Documents\Site Plan\A2157 (09) UTILITY - WATER.dwg, 10/7/2022, 3:01:02 PM, smckinley, 1:1



PRELIMINARY

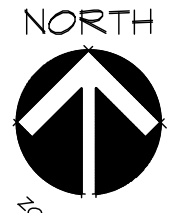
WAUKEE TOWNE CENTER PLAT 2
WAUKEE, IOWA
UTILITY PLAN - WATER MAIN

SHEET
OF 9
A-2163

DATE: 2022-10-07 - FOURTH SUBMITTAL
2022-09-16 - THIRD SUBMITTAL
2022-08-24 - SECOND SUBMITTAL
2022-07-26 - FIRST SUBMITTAL
DATE OF SURVEY: JAN. 05, 2022
DESIGNED BY: EHA
DRAWN BY: NMI



Civil Engineering Consultants, Inc.
2400 86th Street Unit 12 Des Moines, Iowa 50322
515.276.8884 mail@cecinc.com



SCALE: 1" = 100' (11" x 17")
SCALE: 1" = 50' (22" x 34")