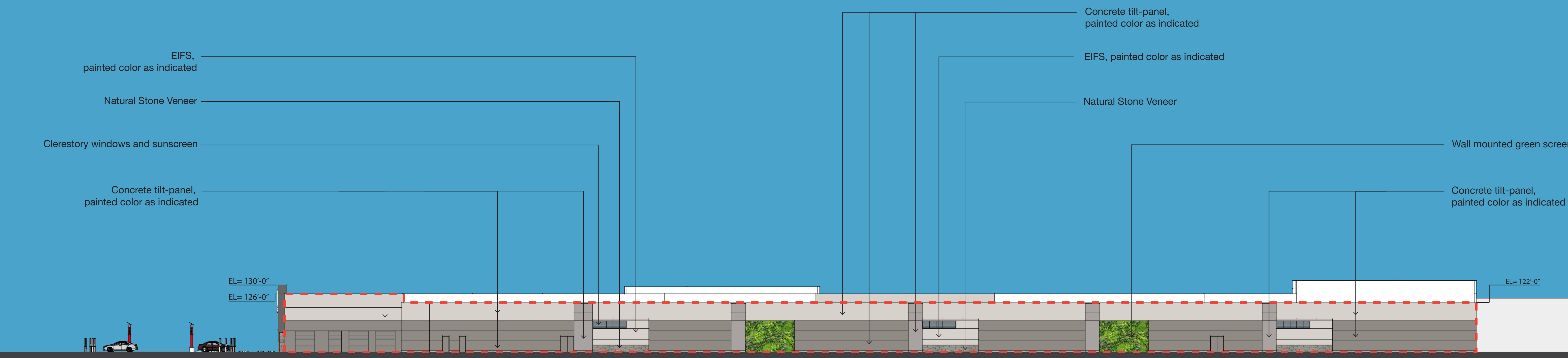


East Elevation

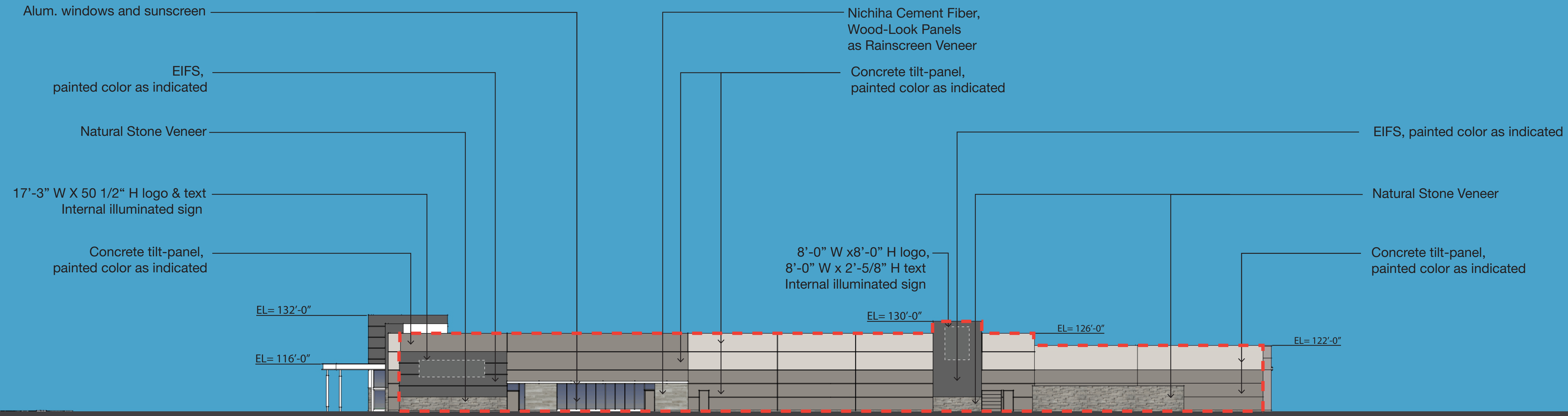


West Elevation

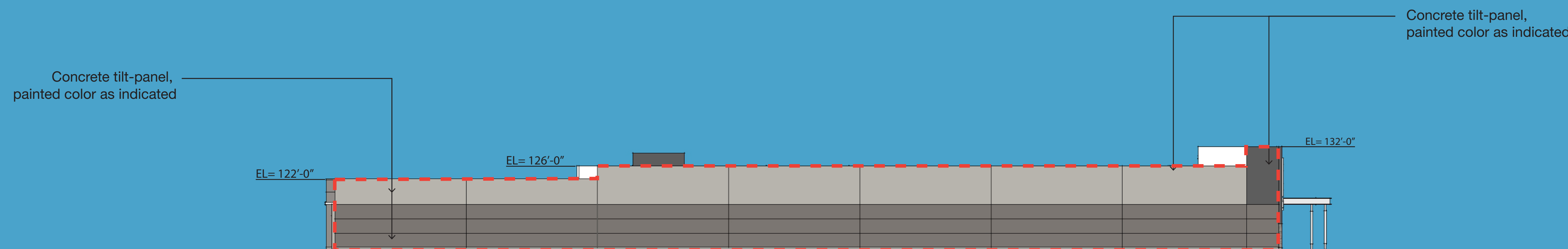
Four elevations total: 41,121 SF
 East:14,665 SF
 North: 7,133 SF
 West : 11,906 SF
 South: 7,417 SF

Primary Materials:
 Concrete Tilt Panels: 28,098 SF
 Glass: 2,914 SF
 Stone Veneer: 3,067 SF

Secondary Materials:(7042 SF @17.1 %)
 EIFS: 5,748 SF @14 %
 Fiber Cement Siding: 1,294 SF



North Elevation



South Elevation

color key



C-36 River Reflectic



C-204 Gauntlet Gray



Stone Veneer - TBD



Branding Color



**Nichiha Fiber Cement
 Wood-Look Panels
 Roughsawn-Smoke**