

HIGHER GROUND WAUKEE

605 E HICKMAN RD.
WAUKEE, IA



LIST OF DRAWINGS

NO.	NAME	DESCRIPTION	CURRENT REVISION	
			NO.	DATE
GENERAL				
1	G1-1	GENERAL BUILDING INFORMATION	1	11/8/22
2	G1-2	SITE PLAN	1	11/8/22
3	G1-3	PHOTOMETRIC		
4	G1-4	CODE STUDY		
5	G1-5	ACCESSIBILITY STANDARDS		
6	G1-6	SPECIFICATIONS		
7	G1-7	SPECIFICATIONS		
8	G1-8	GENERAL NOTES & SPECIFICATIONS		
ARCHITECTURAL				
9	A1-1	FIRST FLOOR PLAN	1	11/8/22
10	A1-2	ENLARGED PLANS	1	11/8/22
11	A1-3	REFLECTED CEILING PLAN	1	11/8/22
12	A1-4	MILLWORK & FINISHES PLAN	1	11/8/22
13	A1-5	ROOF PLAN	1	11/8/22
14	A2-1	EXTERIOR ELEVATIONS	1	11/8/22
15	A3-1	BUILDING SECTIONS	1	11/8/22
16	A3-2	WALL SECTIONS & DETAILS	1	11/8/22
17	A3-3	FRONT ENTRY DETAILS	1	11/8/22
18	A3-4	INTERIOR ELEVATIONS		
19	A3-5	INTERIOR ELEVATIONS	1	11/8/22
20	A4-1	DETAILS	1	11/8/22
21	A5-1	SCHEDULES		
STRUCTURAL				
22	S1-1	SPECIFICATIONS & DETAILS	1	11/8/22
23	S1-2	GENERAL NOTES		
24	S1-3	GENERAL NOTES, TYPICAL DETAILS		
25	S2-1	FOUNDATION PLAN	1	11/8/22
26	S2-2	SECTIONS	1	11/8/22
27	S3-1	FRAMING PLAN	1	11/8/22
28	S4-1	SPECIFICATIONS		
29	S4-2	SPECIFICATIONS		
MECHANICAL				
30	M0-1	GENERAL NOTES + LEGENDS		
31	M1-1	MECHANICAL FLOOR PLAN	1	11/8/22
32	M1-2	UPPER CEILING PLAN		
33	M1-3	MECHANICAL PLAN ROOF		
34	M1-4	GAS PIPING PLAN		
35	M6-1	VENTILATION SCHEDULES	1	11/8/22
36	M5-1	MECHANICAL DETAILS		
37	M6-2	EQUIPMENT SCHEDULES	1	11/8/22
PLUMBING				
38	P0-1	GENERAL NOTES AND LEGENDS		
39	P1-1	PLUMBING WATER DIST. PLAN	1	11/8/22
40	P1-2	PLUMBING SANITARY AND VENT PLAN	1	11/8/22
41	P1-3	PLUMBING STORM PIPING PLAN		
42	P1-4	ROOF PLUMBING PLAN		
43	P6-1	PLUMBING SCHEDULES AND DETAILS	1	11/8/22
44	P9-1	PLUMBING RISER ISOMETRICS	1	11/8/22
ELECTRICAL				
45	E0-1	GENERAL NOTES AND LEGENDS		
46	E1-1	ELECTRICAL LIGHTING FLOOR PLAN	1	11/8/22
47	E1-2	ELECTRICAL POWER PLAN	1	11/8/22
48	E1-3	ELECTRICAL ROOF PLAN		
49	E6-1	ELECTRICAL SCHEDULES	1	11/8/22
50	ES1-1	ELECTRICAL SITE PLAN	1	11/8/22
51	E9-1	ELECTRICAL RISER DIAGRAMS AND DETAILS		

ALLEN PEPA
ARCHITECTS
INFO@ALLENPEPA.COM
TEL: (630) 576-1105
215 FULTON ST., GENEVA, IL 60134

GPC
GLOBAL POWER & CONSTRUCTION
1100 N. UNIVERSITY AVE.
GARDEN CITY, IL 60130

MGN CONSULTING ENGINEERS, INC.
635 BUTTERFIELD ROAD
SUITE #310
OAKBROOK TERRACE, IL 60181
WWW.MGNENGINEERING.COM
DESIGN FIRM # 184001114-0002

SSE
STRUCTURAL ENGINEERS

HIGHER GROUND WAUKEE
605 E HICKMAN RD.
WAUKEE, IA

Schematic Design: 6/21/22
Design Development
Bidding:
Permit: 8/12/22

ISSUE DATE: 11/8/22
POST BID/PERMIT REVISIONS:

No.	Date	Description
1	11/8/22	REVISION 1

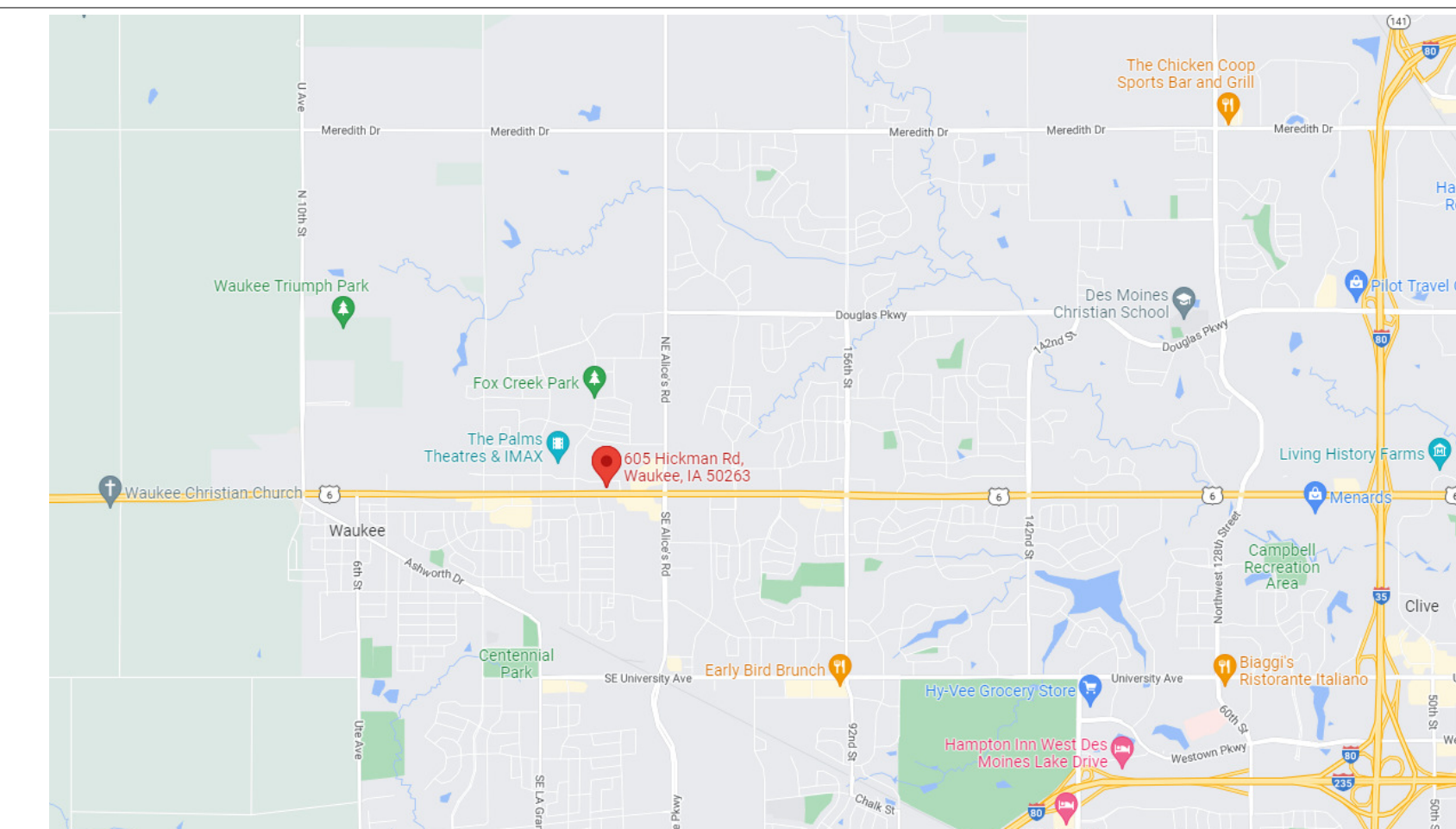
PROJECT NO. 22-014
DRAWN BY AK
CHECKED BY EP
SHEET 1 OF 49

GENERAL BUILDING INFORMATION

CERTIFICATION BLOCK LOCATION	STRUCT. ENGINEER:	MEP ENGINEER:
	SSE STRUCTURAL ENGINEERS, INC.	MGN CONSULTING ENGINEERING, INC.

G1-1

SITE LOCATION



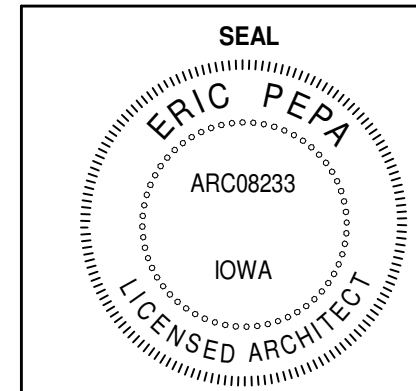
SYMBOLS LEGEND

	BRICK		SECTION NUMBER
	CONCRETE BLOCK		SHEET OF ACTUAL SECTION
	STONE		INTERIOR ELEVATION NUMBER
	RIGID INSULATION		SHEET OF ACTUAL ENLARGEMENT
	CONCRETE		ELEVATION LEVEL
	SAND		REVISION INDICATOR
	WOOD STUD PARTITION		DOOR NUMBER
	DETAIL		WINDOW TYPE
	SHEET OF ACTUAL ENLARGEMENT		COLUMN TYPE
	DETAIL		EXISTING TO REMAIN
	SHEET OF ACTUAL ENLARGEMENT		DEMO WALL
	AREA		NEW WALL

LIST OF ABBREVIATIONS

@	AT (THE RATE OF)	FD	FLOOR DRAIN	PLAS	LAM PLASTIC LAMINATE
AND	AND	FL	FLOOR	PSP	POUNDS PER SQUARE FOOT
#	NUMBER OR POUND	FT	FOOT	PT	PAINT
ACT	ACOUSTIC CEILING TILE	GL	GLASS	PTD	PAINTED
AFF	ABOVE FINISHED FLOOR	GYP BD	GYPSUM WALLBOARD	REQ'D	REQUIRED
ALUM	ALUMINUM	HC	HOLLOW CORE	SC	SOLID CORE
BLDG	BUILDING	HCA	HANDICAP ACCESSIBLE	ST/ST	STAINLESS STEEL
B/O	BOTTOM OF	HT	HEIGHT	SECT	SECTION
CL	CENTER LINE	HM	HOLLOW METAL	SF	SQUARE FOOT
CLG	CEILING	INSUL	INSULATION	SY	SQUARE YARD
COL	COLUMN	JB	JUNCTION BOX	SHT	SHEET
CONC	CONCRETE	LA	LANDSCAPE ARCHITECT	STD	STANDARD
CONST	CONSTRUCTION	LAM	LAMINATE OR LAMINATED	STL	STEEL
CONTR	CONTINUOUS	LAV	LAVATORY	T&B	TOP AND BOTTOM
CONTR	CONTRACTOR	MAX	MAXIMUM	T&G	TONGUE AND GROOVE
CPT	CARPET	MECH	MECHANICAL	THK	THICK, THICKNESS
DET	DETAIL	MO	MASONRY OPENING	T/O	TOP OF
DIA	DIAMETER	MTL	METAL	TYP	TYPICAL
DIAG	DIAGONAL	MFG	MANUFACTURER	UNO	UNLESS NOTED OTHERWISE
DIM	DIMENSION	MIN	MINIMUM	VCT	VINYL COMPOSITION TILE
DWGS	DRAWINGS	MISC	MISCELLANEOUS	VIF	VERIFY IN FIELD
ELECT	ELECTRICAL	NIC	NOT IN CONTRACT	W/	WITH
EL	ELEVATION	NO	NUMBER	W/O	WITHOUT
EQ	EQUAL	NTS	NOT TO SCALE	W/C	WATERCLOSET
EXT	EXTERIOR	OC	ON CENTER	YD	YARD
EXIST	EXISTING	OD	OUTSIDE DIAMETER		
EXP JT	EXPANSION JOINT				

ARCHITECT'S SEAL & STATEMENT



I HEREBY CERTIFY THAT THE PORTION OF THIS TECHNICAL SUBMISSION DESCRIBED BELOW WAS PREPARED BY ME OR UNDER MY DIRECT SUPERVISION AND RESPONSIBLE CHARGE. I AM A DULY LICENSED ARCHITECT UNDER THE LAWS OF THE STATE OF IOWA.

SIGNATURE: *Eric Pepa* DATE: 8/12/22

PRINTED OR TYPED NAME: ERIC PEPA

LICENSE NUMBER: ARC08233

MY LICENSE RENEWAL DATE IS JUNE 30, 2023

PAGES OR SHEETS COVERED BY THIS SEAL: G1-1, G1-2, G1-3, G1-4, G1-5, G1-6, G1-7, G1-8

A1-1, A1-2, A1-3, A1-4, A1-5, A2-1, A3-1, A3-2, A3-3, A3-4, A3-5, A4-1, A5-1

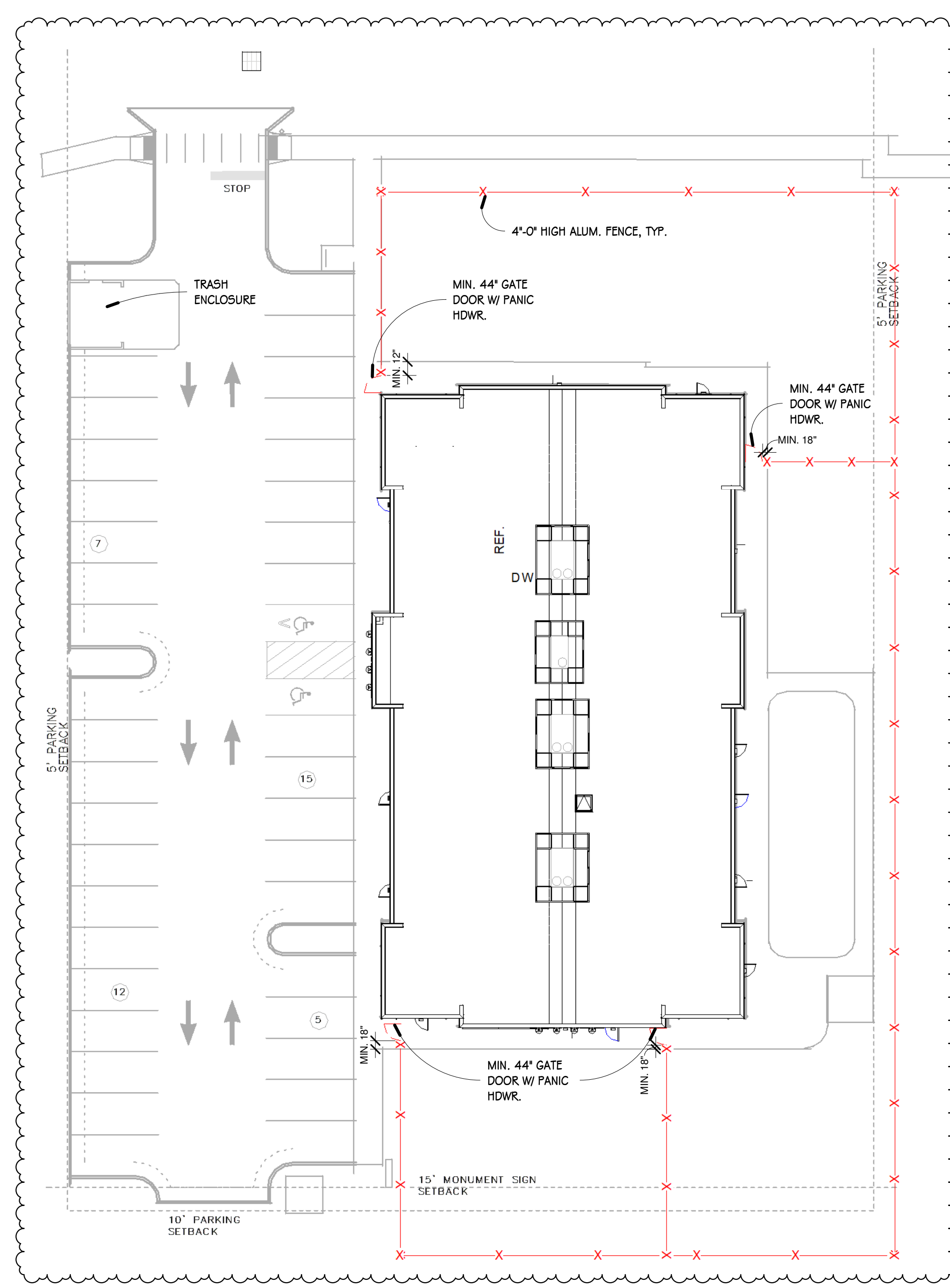
THE ARCHITECT IS NOT RESPONSIBLE FOR THE WORKMANSHIP OF THE CONTRACTOR. ALL LIABILITY OF THE ARCHITECT IS WAIVED WHEN THE CONTRACTOR OR OWNER DEVIATES FROM THESE DOCUMENTS WITHOUT WRITTEN APPROVAL FROM THE ARCHITECT.

DO NOT SCALE THE PLANS. ALL DIMENSIONS SHALL BE CONFIRMED BY THE CONTRACTOR PRIOR TO ASSEMBLY.

THESE PLANS ARE THE SOLE PROPERTY OF ALLEN+PEPA ARCHITECTS ELPN STUDIO, INC. OF GENEVA, ILLINOIS. COPYRIGHT 2022. ANY UNAUTHORIZED USE OF THESE PLANS, IN WHOLE OR IN PART IS STRICTLY PROHIBITED.

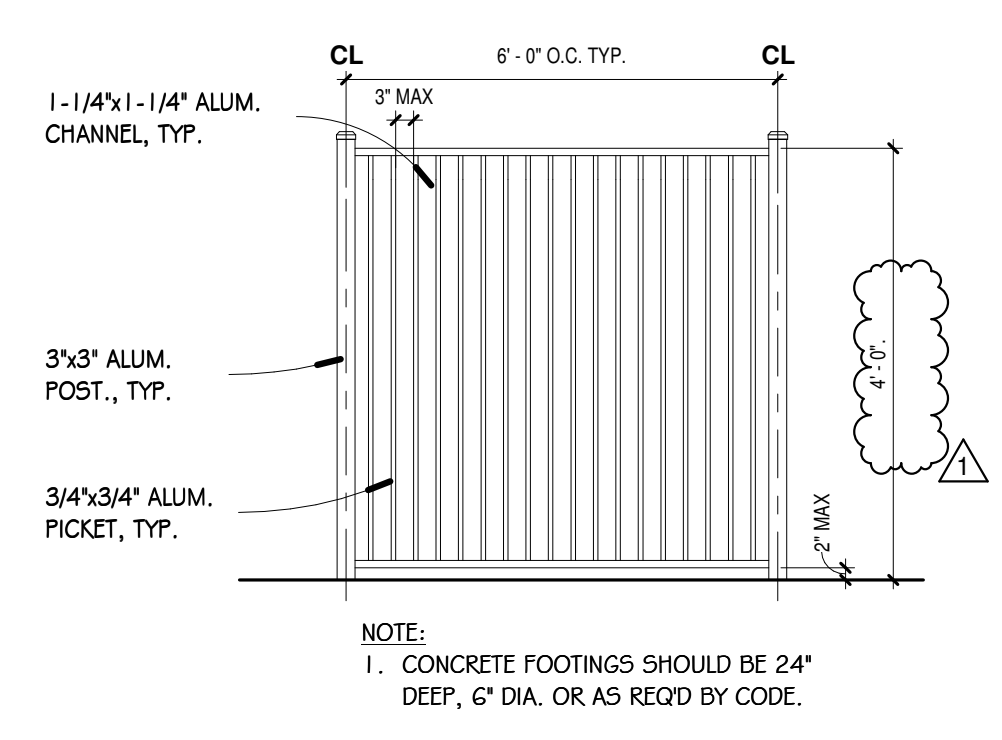
CERTIFICATION BLOCK LOCATION	STRUCT. ENGINEER:	MEP ENGINEER:
	SSE STRUCTURAL ENGINEERS, INC.	MGN CONSULTING ENGINEERING, INC.

REVISION 1 11/8/22

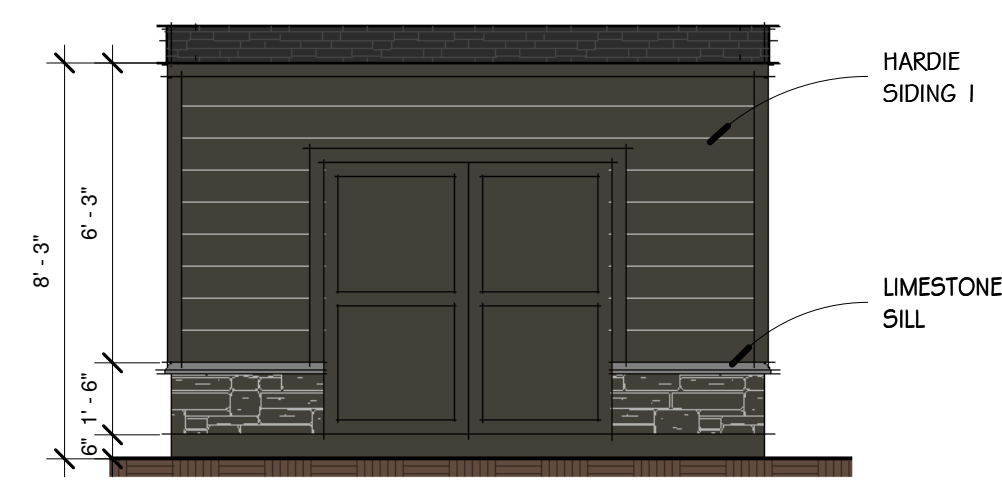
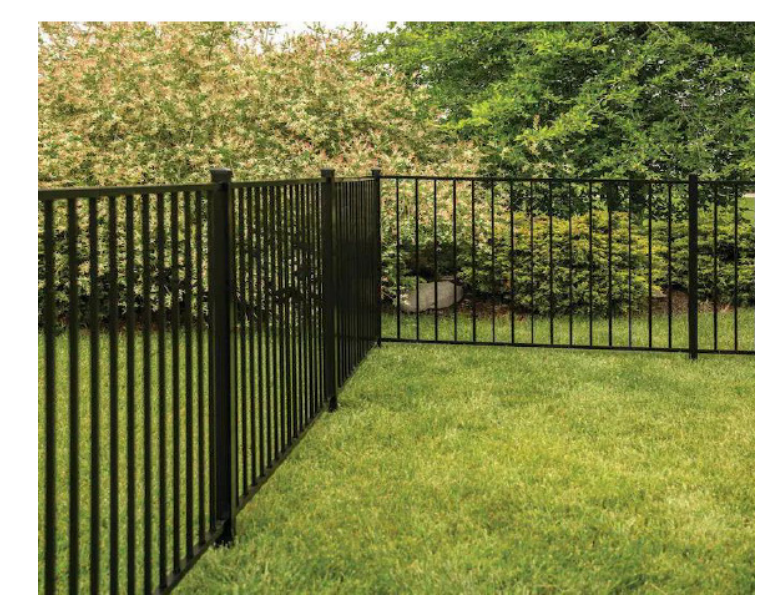


1 SITE PLAN
1" = 20'-0"

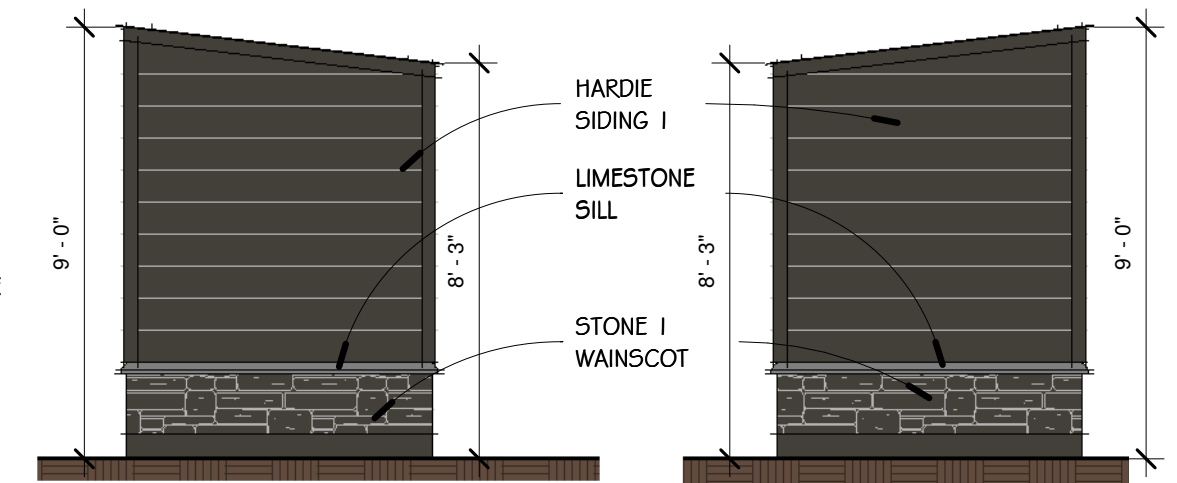
NOTE: SITE PLAN IS FOR REFERENCE ONLY, SEE CIVIL ENGINEERING PLANS FOR SITE GRADING AND BENCHMARKS.



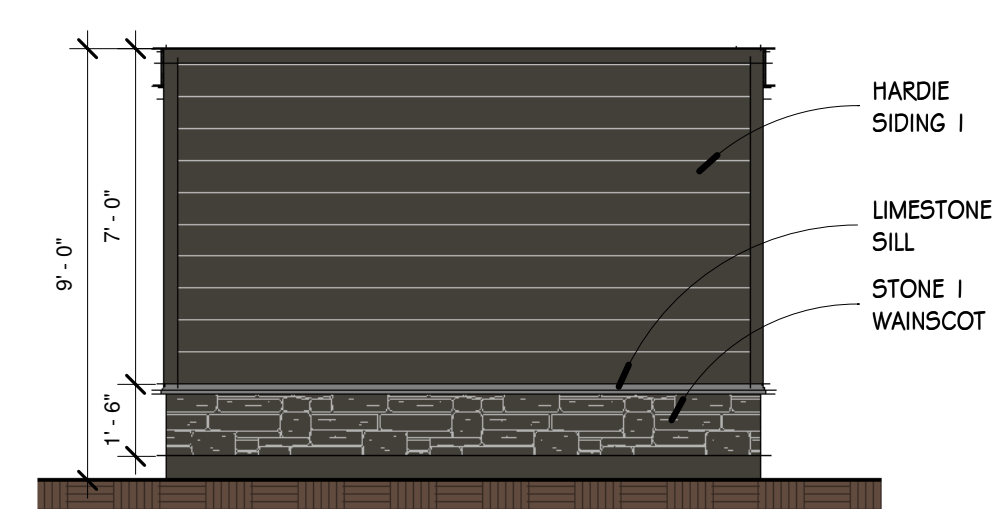
2 ALUMINUM FENCE
3/8" = 1'-0"



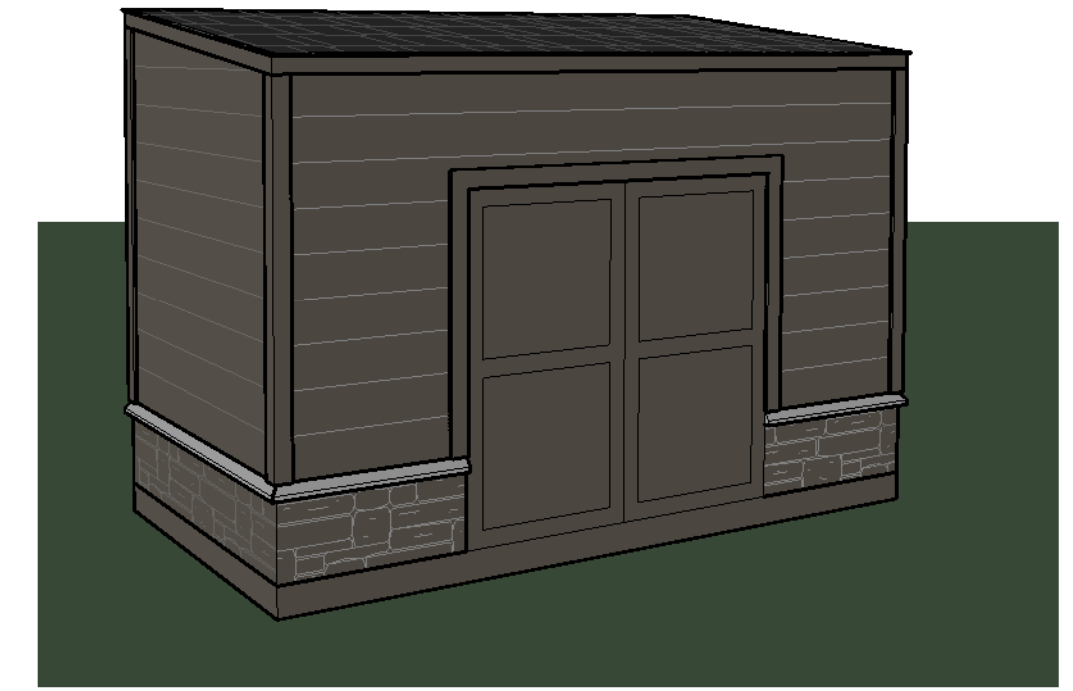
3 SHED FRONT ELEVATION
1/4" = 1'-0"



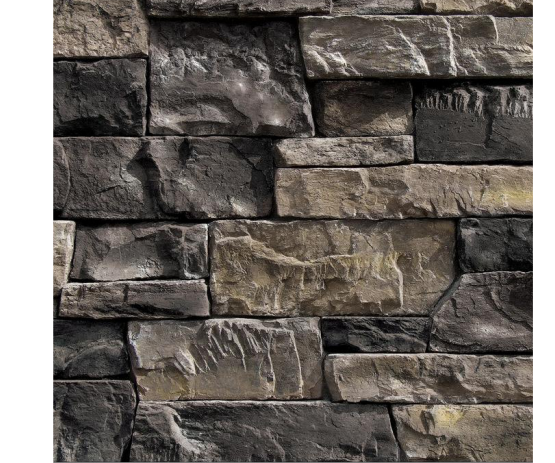
11 SHED SIDE ELEVATIONS
1/4" = 1'-0"



12 SHED BACK ELEVATION
1/4" = 1'-0"



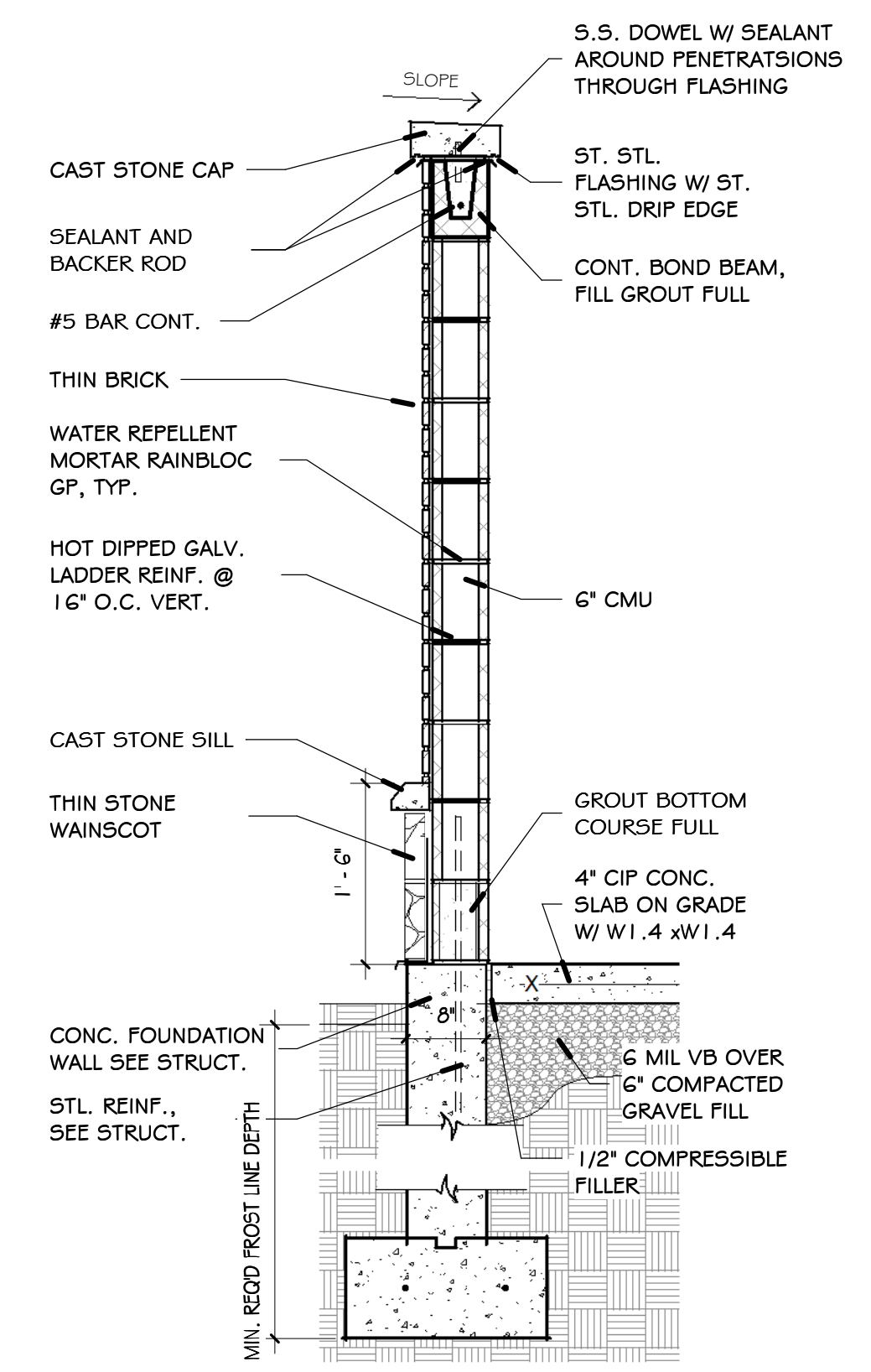
JAMES HARDIE SIDING I: HARDIEPLANK, CEDARMILL COLOR: RICH ESPRESSO



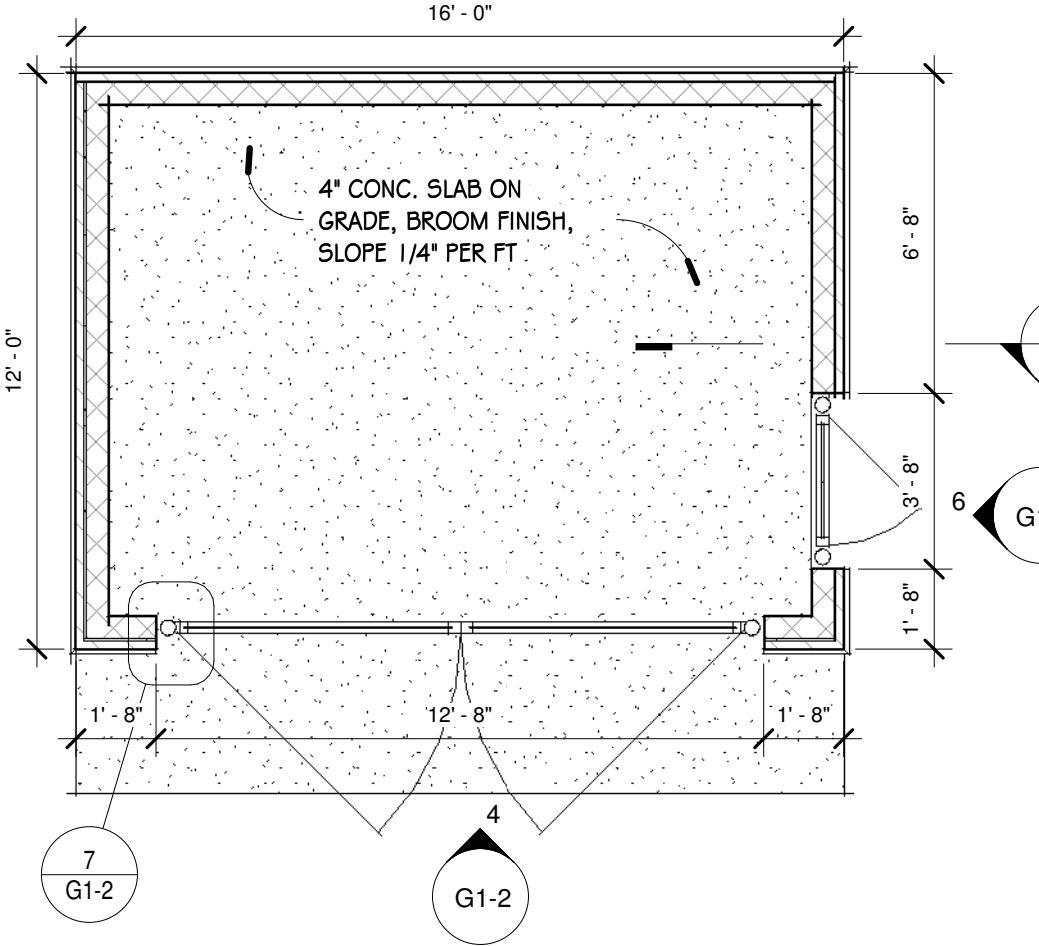
STONE I: CORONADO OLD COUNTY LEDGE BANFF



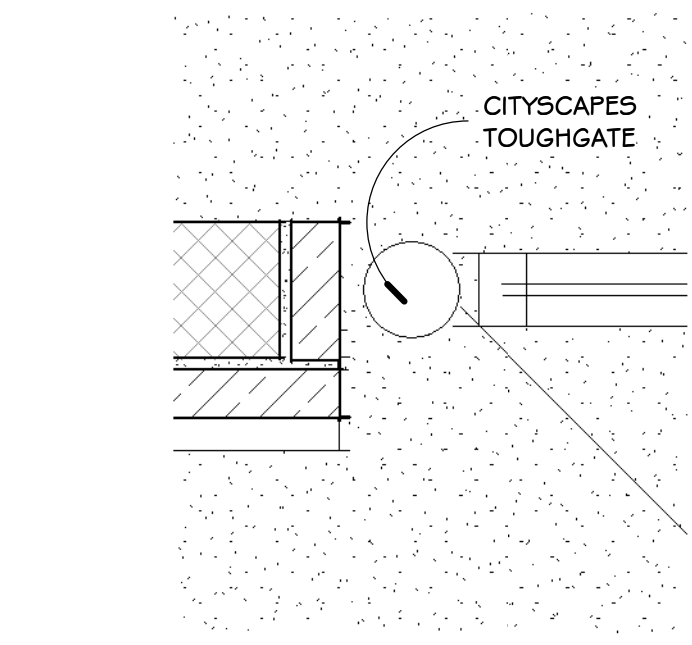
ARCHITECTURAL SHINGLES: CERTAINTEED LANDMARK MOIRE BLACK



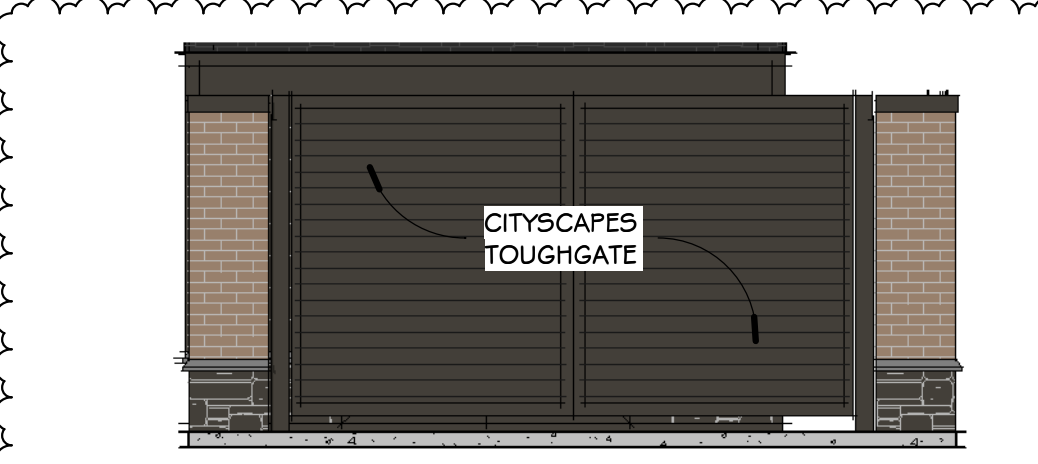
8 DUMPSTER ENCL. SECT.
3/4" = 1'-0"



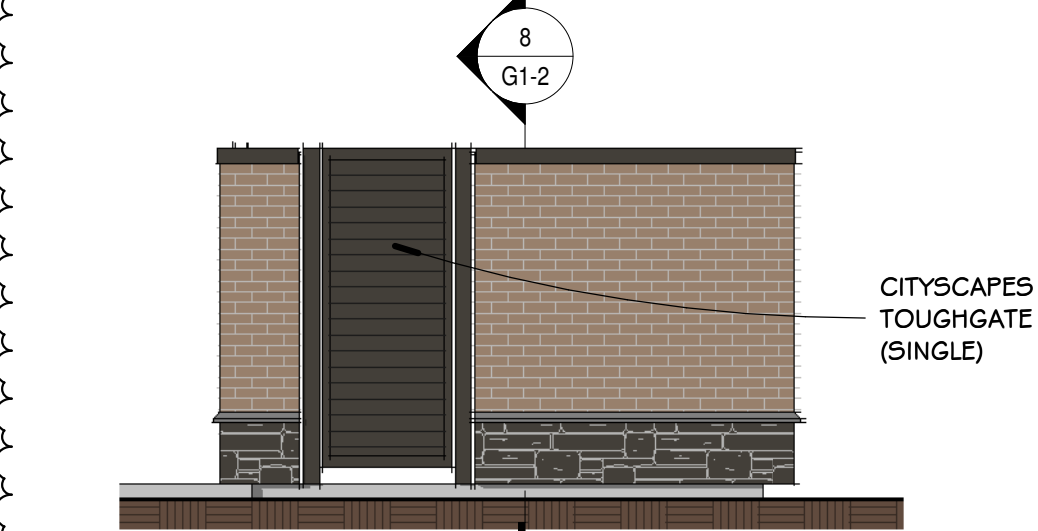
5 DUMPSTER ENCL. PLAN
1/4" = 1'-0"



7 DUMPSTER ENCL. DTL.
1 1/2" = 1'-0"



4 DUMPSTER ELEV. - FRONT
1/4" = 1'-0"



6 DUMPSTER ELEV. - SIDE
1/4" = 1'-0"

GATE:
CITYSCAPES TOUGHGATE
MATERIAL: PVC PLAN INFILL WITH ALUMINUM FRAME
STYLE: MISSION
COLOR: TO MATCH WALL MATERIALS

MISSION
(#1 MOST POPULAR)

GATE PANIC HARDWARE:
6047 Superior Exit Bar Kit - Detex Exit Bar with Alarm
• #6006 or #6008 Detex Alarmed Exit Bar
• 24" Mounting Plate, Adjusts for 29" to 52" Gate Frame
• Adjustable Receiver Bracket for 3" O.D. Latch Post*
• Lock Box - Allows for Entry from Outside of Gate
• Key Cylinder with 2 Keys
• Pre-Drilled Holes for Exit Bar and Lock Box
• Stainless Steel Tek-Screws and Fasteners Included

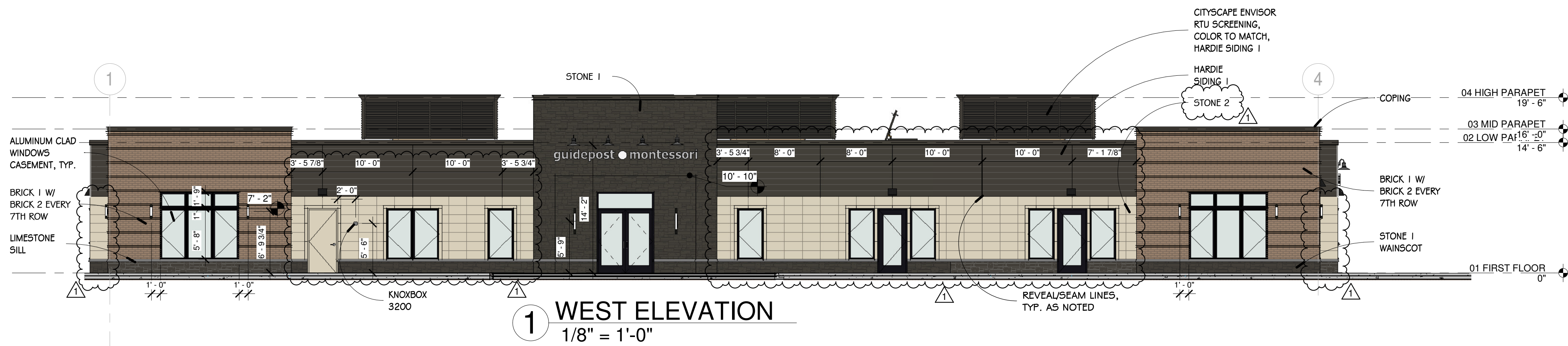
Description	Part no.	Weight ea.	Price ea.
Superior Kit w/ alarm 36" Bar - Silver Plate	6047-B36	43 lbs.	
Superior Kit w/ alarm 48" Bar - Silver Plate	6047-B48	45 lbs.	
Superior Kit w/ alarm 36" Bar - Black Plate	6047-B36	43 lbs.	
Superior Kit w/ alarm 48" Bar - Black Plate	6047-B48	45 lbs.	

V40 x EB x W

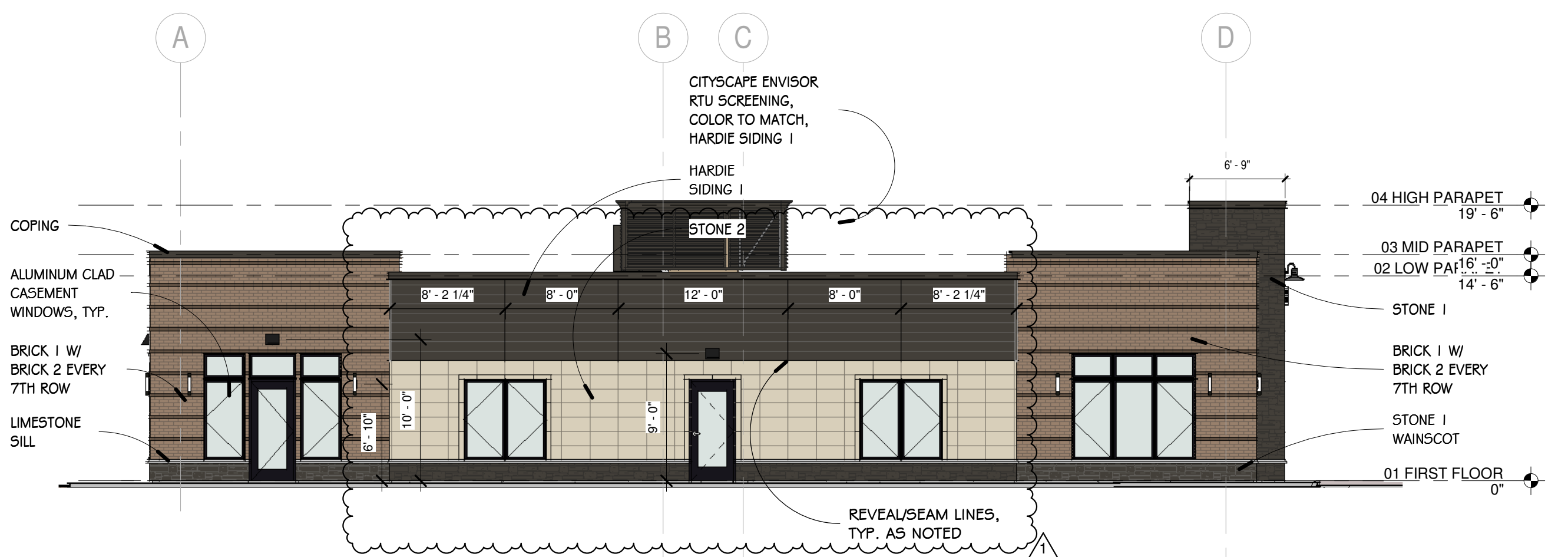
Schematic Design: 6/21/22
Design Development
Bidding:
Permit: 8/12/22
ISSUE DATE: 12/7/22
POST BID/PERMIT REVISIONS:

No.	Date	Description
1	11/8/22	REVISION 1

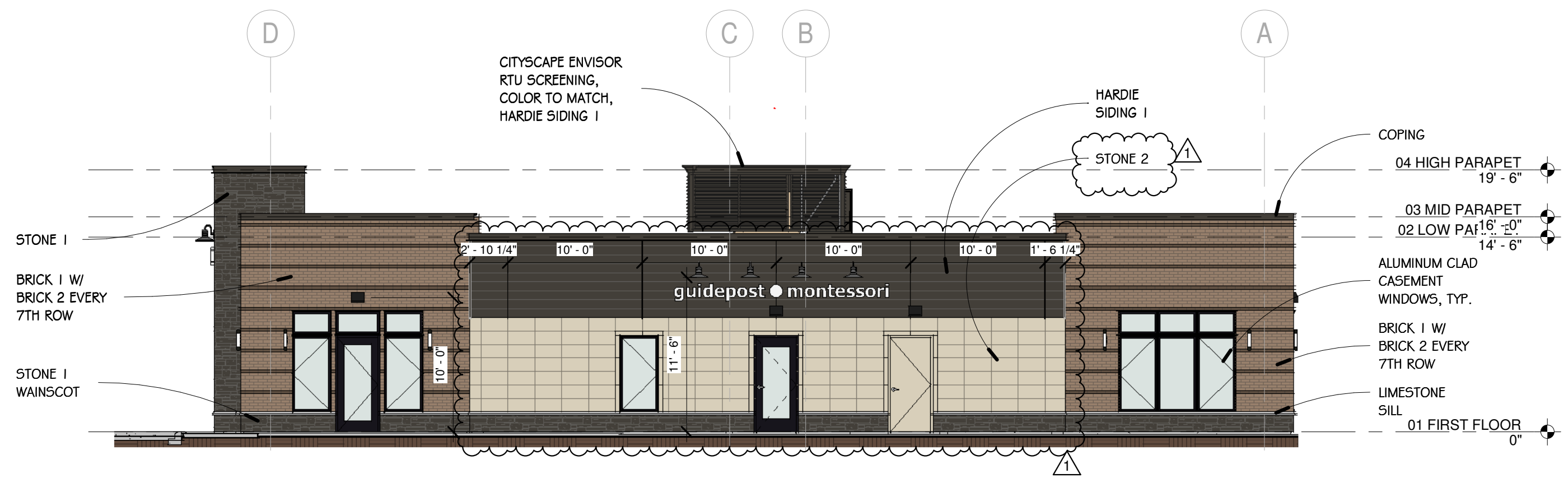
PROJECT NO. 22-014
DRAWN BY AK
CHECKED BY EP
SHEET 2 OF 49



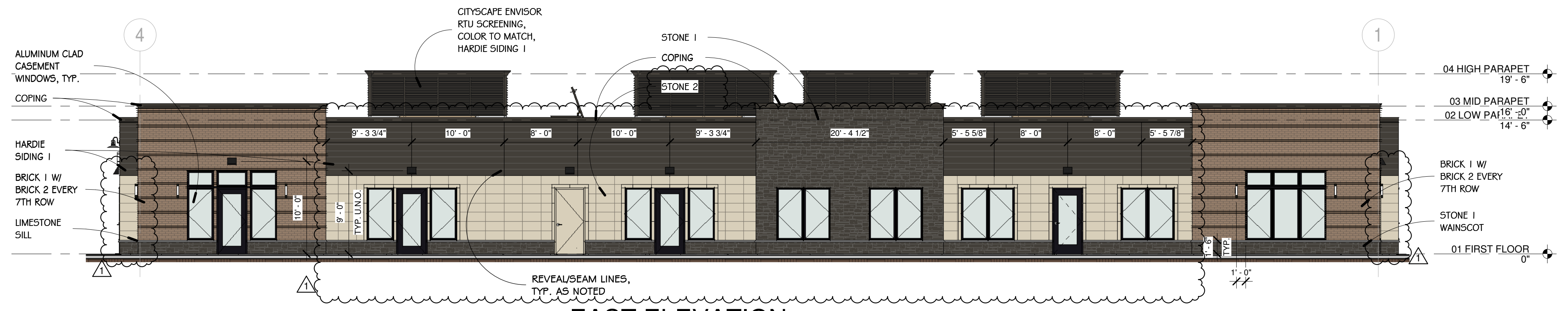
1 WEST ELEVATION
1/8" = 1'-0"



2 NORTH ELEVATION
1/8" = 1'-0"



3 SOUTH ELEVATION
1/8" = 1'-0"



4 EAST ELEVATION
1/8" = 1'-0"

ELEVATION MATERIAL CALCULATIONS:		
BRICK	= 1,662 S.F.	1,662 S.F. / 6,936 S.F. = 24.0%
STONE 1	= 1,310 S.F.	1,310 S.F. / 6,936 S.F. = 18.9%
STONE 2	= 1,127 S.F.	1,127 S.F. / 6,936 S.F. = 16.2%
SIDING 1	= 1,524 S.F.	1,524 S.F. / 6,936 S.F. = 22.0%
GLASS	= 1,313 S.F.	1,313 S.F. / 6,936 S.F. = 18.9%
TOTAL	= 6,936 S.F.	



STONE 1:
CORONADO OLD COUNTY LEDGE
BANFF



JAMES HARDIE SIDING 1:
HARDIEPLANK, CEDAR MILL
COLOR: RICH ESPRESSO



STONE 2:
CORDOVA STONE 1-INCH (12" x 24")
COLOR/TEXTURE: BUFF / GROUND FACE



BRICK 1:
KINGS MATERIAL HERITAGE COLLECTION - TUMBLED
TUSCAN VILLA

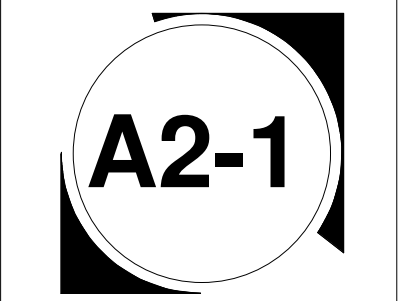


BRICK 2 (HORIZONTAL ACCENT):
GLEN-GERY BRAZILWOOD WIRECUT THIN BRICK

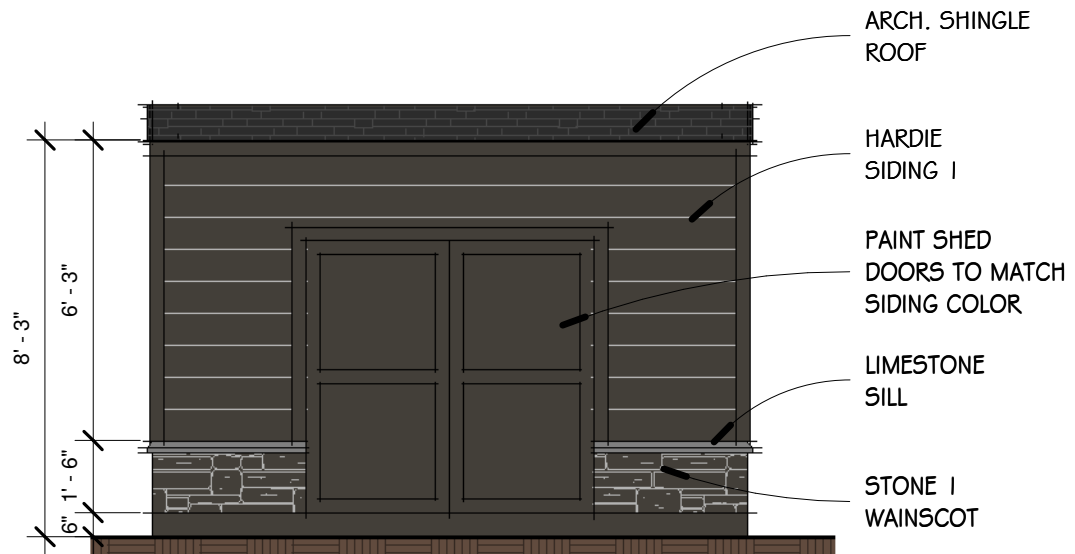
Schematic Design:	6/21/22	
Design Development:		
Bidding:		
Permit:		
ISSUE DATE:	11/8/22	
POST BID/PERMIT REVISIONS:		
No.	Date	Description
1	11/8/22	REVISION 1

PROJECT NO.	22-014
DRAWN BY	AK
CHECKED BY	EP
SHEET	14 OF 49

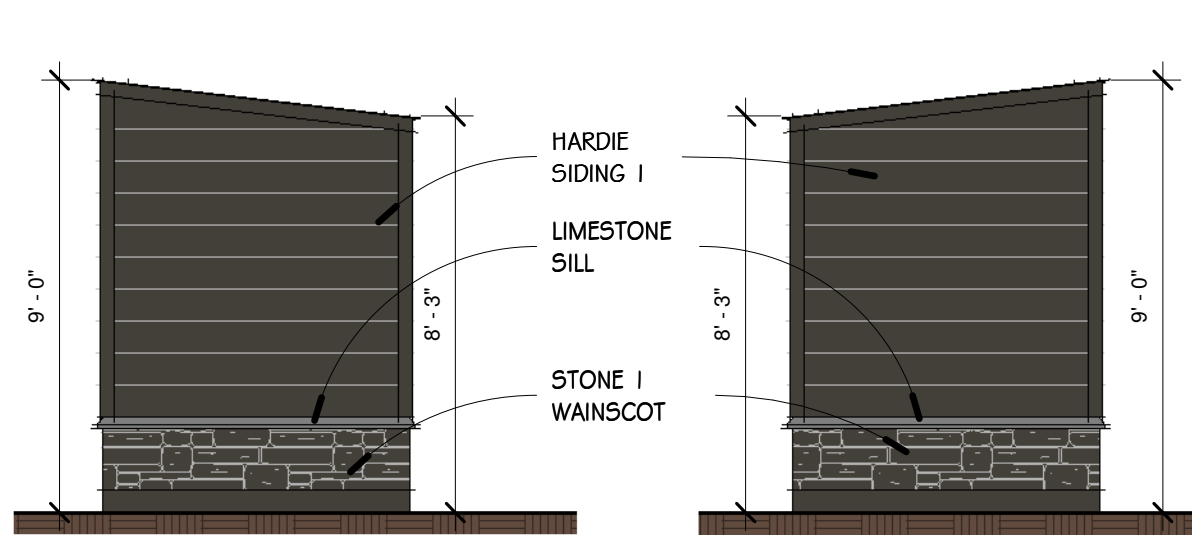
EXTERIOR ELEVATIONS



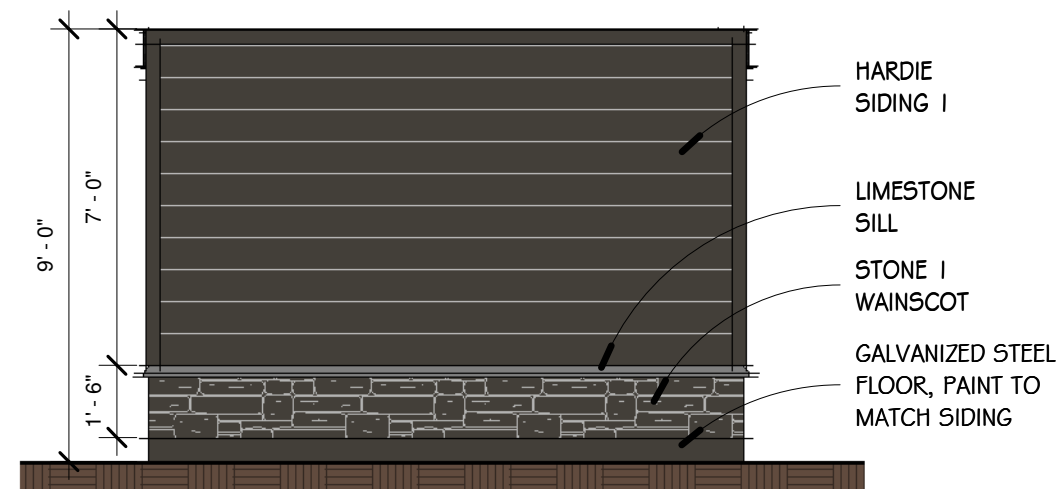
REVISION 1 11/8/22



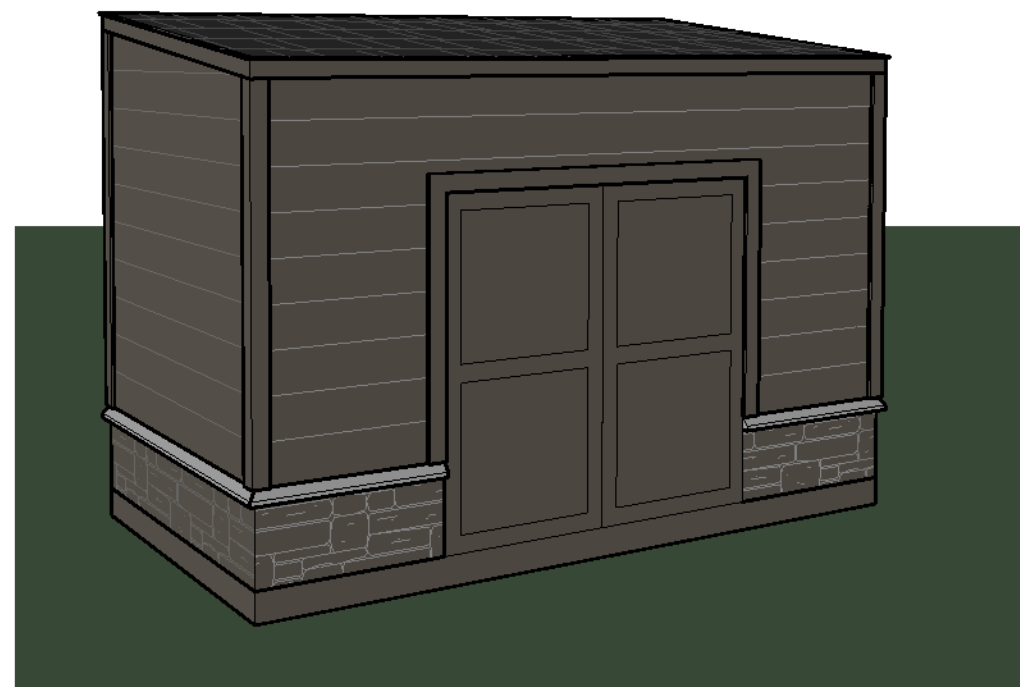
1 SHED FRONT ELEVATION
1/4" = 1'-0"



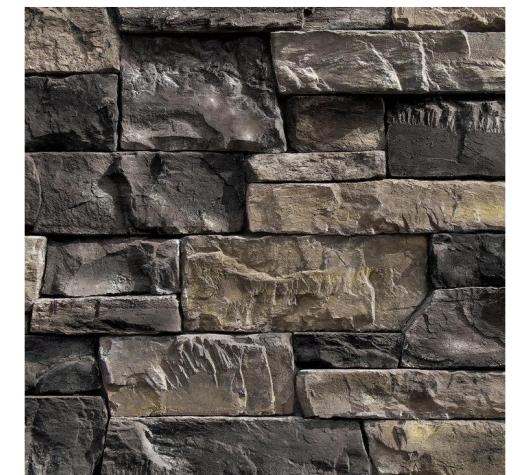
2 SHED SIDE ELEVATIONS
1/4" = 1'-0"



3 SHED BACK ELEVATION
1/4" = 1'-0"



JAMES HARDIE SIDING I:
HARDIEPLANK, CEDARMILL
COLOR: RICH ESPRESSO



STONE I:
CORONADO OLD COUNTY LEDGE
BANFF



ARCHITECTURAL SHINGLES:
CERTAINTEED LANDMARK
MOIRE BLACK

HIGHER GROUND WAUKEE
605 E HICKMAN RD., WAUKEE, IA

DATE:	12/7/22
DRAWN:	AK
SCALE:	As indicated
PROJECT NO.:	22-014

ALLEN PEPA
ARCHITECTS

215 FULTON STREET
GENEVA, IL 60134
Ph. 847.695.7092
www.allenpepa.com

SK-1