

EXTERIOR MATERIAL LEGEND	
MAT. LABEL	MATERIAL DESCRIPTION
BRK	MERIDIAN BRICK, THIN BRICK, COLOR - AMARO, NATURAL MORTAR (CLASS 2)
DS	PREFINISHED METAL DOWNSPOUT, COLOR - WHITE
FAS-1	HARDIE FASCIA BOARD, SMOOTH, COLOR - ARCTIC WHITE
FAS-2	PREFINISHED METAL FASCIA, COLOR - WHITE
FCB-1	FIBER CEMENT LAP SIDING (JAMES HARDIE OR EQUAL), SMOOTH, 6" REVEAL COLOR - ARCTIC WHITE (CLASS 3)
FCP-1	FIBER CEMENT PANEL (JAMES HARDIE OR EQUAL), SMOOTH SIDING, COLOR - COBBLESTONE (CLASS 3)
FCP-2	FIBER CEMENT PANEL (JAMES HARDIE OR EQUAL), SMOOTH SIDING, COLOR - AGED PEWTER (CLASS 3)
RF	ARCHITECTURAL ASPHALT ROOFING SHINGLES, COLOR - CHARCOAL
SF-1	T.B. ALUMINUM STOREFRONT FRAMING, CLEAR ANODIZED FINISH
STN	CENTURION STONE, COASTAL OHIO LIMESTONE (CLASS 2)
TRM	5/8" HARDIE TRIM BOARD, SMOOTH, COLORPLUS, COLOR - ARCTIC WHITE
VIS	INSULATED VISION GLASS: CLEAR W/LOW E COATING IN VINYL, RESIDENTIALSTYLE WINDOW (CLASS 1)

GENERAL EXTERIOR ELEVATION NOTES

- REFER TO ADDITIONAL NOTES AND REQUIREMENTS ON ALL OTHER DOCUMENTS AND OTHER DISCIPLINE DOCUMENTS.
- ALL CONDUIT RUNS & SERVICE LINES SHALL BE GROUPED TOGETHER IN A NEAT & ORDERLY MANNER AND SHOULD PENETRATE THE WALL AT THE LOWEST POINT AND ARE NOT TO RUN OVER THE TOP OF PARAPET. ALL OTHER CONDUITS & JUNCTION BOXES FOR EXTERIOR FIXTURES & EQUIPMENT SHALL BE FULLY CONCEALED WITHIN THE BUILDING CONSTRUCTION.
- ALL HORIZONTAL TRANSITIONS BETWEEN DIFFERENT MATERIALS SHALL BE FLASHED CONTINUOUSLY FROM UP BEHIND UPPER MATERIAL AND EXTEND OVER TO EXTERIOR FACE OF LOWER MATERIAL WITH DRAIN EDGE.
- ANY RETURNS OR BLIND ELEVATIONS NOT SHOWN SHALL BE SIMILAR IN MATERIAL AND MAKEUP TO ADJACENT CONDITIONS OR OTHER SIMILAR CONDITIONS.
- NO EXPOSED MASONRY/MATERIAL CORES, MASONRY RETURNS AT WINDOWS/OPENINGS ARE REQUIRED IF FRAMING IS NOT DEEP ENOUGH TO PROVIDE CLOSURE AT THE BACKSIDE OF MASONRY FOR AN EFFECTIVELY SEALED JOINT.
- MATERIALS ABOVE CANOPIES & AWNINGS TO BE CONTINUED DOWN BEHIND THEM U.O.N., TYP.
- ANY EXPOSED ROOFING MEMBRANE VISIBLE FROM A PUBLIC RIGHT AWAY MUST MATCH THE PRIMARY WALL MATERIAL COLOR.
- INSTALL VERTICAL EXPANSION JOINTS PER STRUCTURAL OR MINIMAL AT COLUMN/GRID LINES AND AT THE HEAD OF DOOR JAMB/OPENINGS OR AS OTHERWISE NOTED OR WHERE REQUIRED PER STANDARD MATERIAL PRACTICE TO REDUCE STRESS CRACKING. NO CONTROL JOINT/EXPANSION JOINT AT MAIN STRUCTURAL BEARING LOCATIONS. VERIFY JOINTS WITH ARCHITECT.
- CAULK & SEAL ALL TRANSITION-CONTROL-EXPANSION AT ALL EXTERIOR MATERIALS.
- PROVIDE CAST REGLETS JUST IN FROM THE OUTER EDGE ON UNDERSIDE OF FACE MATERIAL OR DRIP EDGE AT ALL OVERHANGS & SOFFITS.
- INSULATE AND SEAL TO ENSURE ADEQUATE AIR INFILTRATION BARRIER AROUND ALL EXTERIOR PENETRATIONS TO PREVENT WATER AND SPRINKLER PIPE FREEZING.
- WHERE EXTERIOR PAVING ADJACENT TO BUILDING, TOP OF PAVING TO BE 1/4" LOWER THAN INTERIOR FINISH FLOOR, SLOPING CONTINUOUSLY AWAY FROM BUILDING A MINIMUM OF 5". WHERE DOOR STOOP, 48" OUT FROM DOOR 1/4"(2%) MAX. SLOPE, AFTER 48" AWAY FROM DOOR 1/20(5%) MAXIMUM SLOPE TO PUBLIC WAY. (REFER TO CIVIL)
- WHERE NO EXTERIOR PAVING ADJACENT TO BUILDING, TOP OF FINISHED LANDSCAPE A MINIMUM OF 4" BELOW INTERIOR FINISH FLOOR AND 4" BELOW EXTERIOR WALL FLASHING/WEEPS, SLOPING CONTINUOUSLY AWAY FROM BUILDING A MINIMUM OF 5". (REFER TO CIVIL)
- ADDRESS SHALL BE PROVIDED ON STREET SIDE OF BUILDING AND ON MONUMENT SIGN. NUMBERS A MINIMUM 5 INCH CONTRASTING COLOR NUMBERS WITH MINIMUM 1/2" STROKE.
- IF ANY SIGNAGE OR SIGN BASE IS SHOWN IT IS FOR REFERENCE ONLY. FINAL DESIGNS AND/OR ALLOWANCES SHALL BE DETERMINED WITH APPROVED SIGNAGE PERMIT(S).

EXTERIOR MATERIAL CALCULATIONS:

FRONT ELEVATION EXCLUDING OPENINGS: 7789 SF (TOTAL = 10,442 SF)
STONE/BRICK = 2821 SF (36% >35%)
FIBER CEMENT PANEL & BOARD: 4968 SF
SIDE ELEVATION 1 EXCLUDING OPENINGS: 1808 SF (TOTAL = 2210 SF)
STONE/BRICK = 706 SF (39% >35%)
FIBER CEMENT PANEL & BOARD: 1102 SF
SIDE ELEVATION 2 EXCLUDING OPENINGS: 1933 SF (TOTAL = 2267 SF)
STONE/BRICK = 729 SF (38% >35%)
FIBER CEMENT PANEL & BOARD: 1204 SF

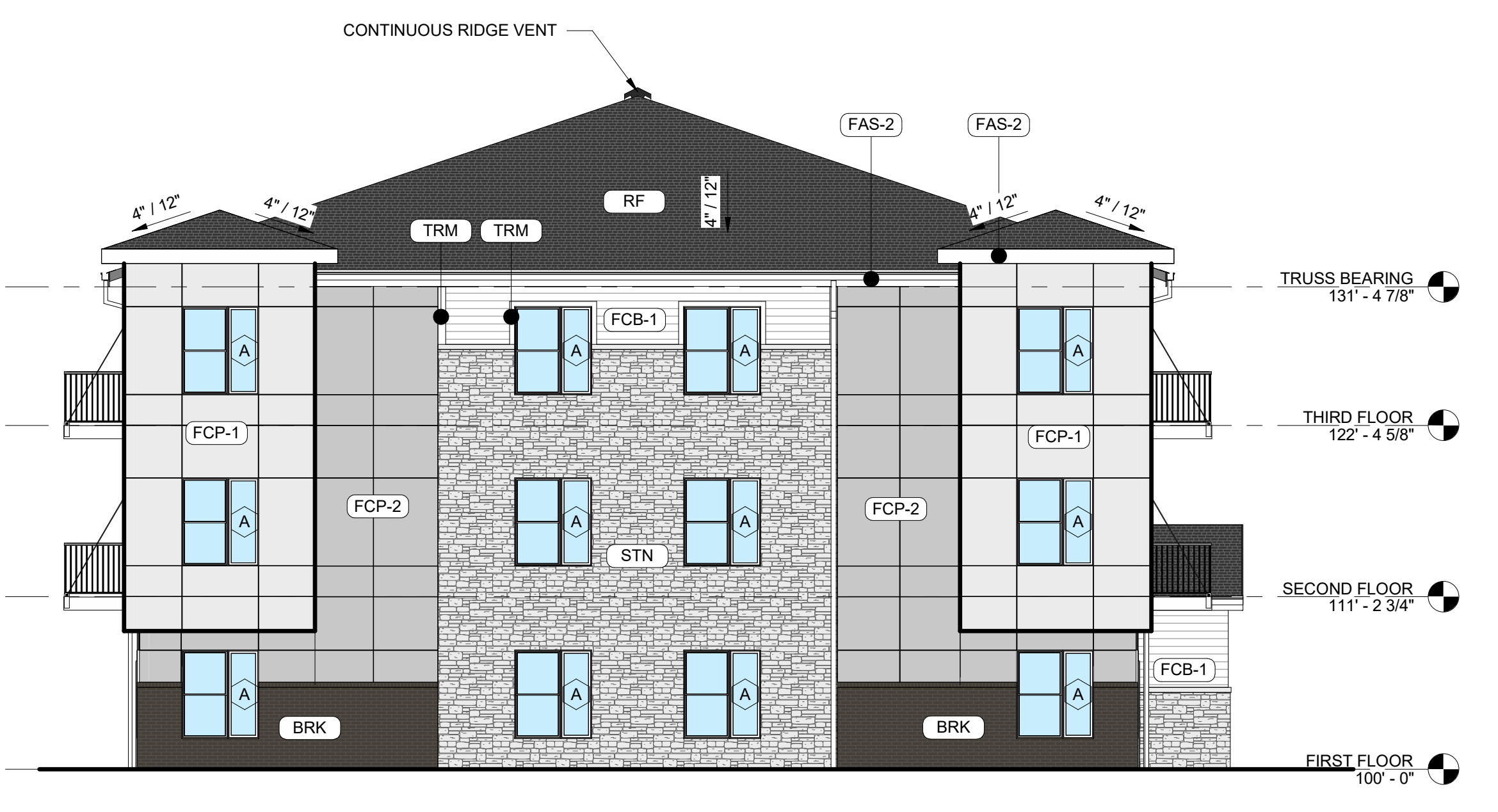
MISC EXTERIOR MATERIAL FINISHES

- TYPICAL U.O.N.
- EXPOSED CONCRETE: GRIND SMOOTH & RUB/COAT WITH CEMENT SLURRY.
 - METAL RAILINGS: GALVANIZED & PAINTED WHITE.
 - FASCIA & SOFFIT: METAL PREFINISHED TO MATCH ADJACENT ROOF COLOR.
 - SCUPPERS, GUTTERS & DOWNSPOUTS: METAL PREFINISHED WHITE.
 - CAULKS & SEALANTS: COLOR MATCHED TO ADJACENT MATERIAL.
 - HOLLOW METAL MAIN DOORS & FRAMES: PAINTED TO MATCH ADJACENT MATERIAL.
 - OVERHEAD PANEL DOORS: METAL PRE-FINISHED WHITE.
 - LOUVERS: METAL PRE-FINISHED TO MATCH ADJACENT MATERIAL COLOR.
 - LIGHT FIXTURES: METAL PRE-FINISHED HOUSINGS TO MATCH ADJ. OPENING FRAMING.
 - MECHANICAL EQUIPMENT: IF NOT SCREENED, COLOR TO MATCH ADJACENT MATERIAL.
 - EXTERIOR UTILITY EQUIPMENT: IF ALLOWED, PAINTED TO MATCH ADJACENT MATERIAL.
- TRIM SIZES, TYP. U.O.N.:
- WINDOWS & DOORS 3-1/2"
 - VERTICAL 3-1/2"
 - HORIZONTAL 5-1/2"

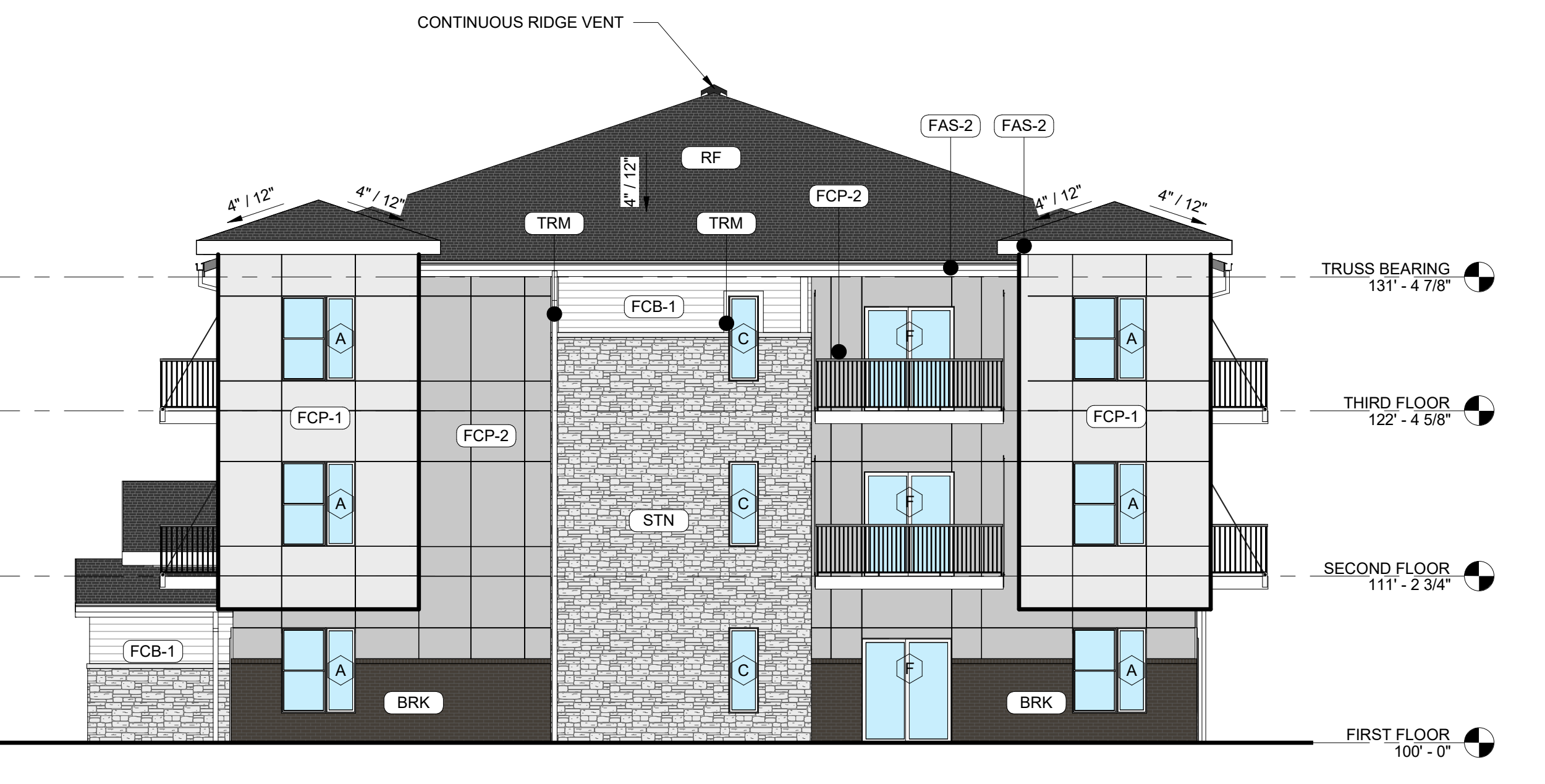


1 BLDG TYPE A - FRONT ELEVATION
SCALE: 1/8" = 1'-0"

SOUTH ELEVATION BUILDING #1
WEST ELEVATION BUILDING #2



2 BLDG TYPE A - SIDE ELEVATION 1
SCALE: 1/8" = 1'-0"



3 BLDG TYPE A - SIDE ELEVATION 2
SCALE: 1/8" = 1'-0"

Rev. #	Issue / Revision	Date
1	30% S&P	12-09-2022
2	60% S&P	01-10-2022
3	ISSUED FOR PERMIT	04-20-2022
4	REVISION	10-17-2022

Job No. **21113** Proj. Mgr. **SP**

Sheet Title
BLDG TYPE A - EXTERIOR ELEVATIONS

Sheet No.
A-A201

EXTERIOR MATERIAL LEGEND	
MAT. LABEL	MATERIAL DESCRIPTION
BRK	MERIDIAN BRICK, THIN BRICK, COLOR - AMARO, NATURAL MORTAR (CLASS 2)
DS	PREFINISHED METAL DOWNSPOUT, COLOR - WHITE
FAS-1	HARDIE FASCIA BOARD, SMOOTH, COLOR - ARCTIC WHITE
FAS-2	PREFINISHED METAL FASCIA, COLOR - WHITE
FCB-1	FIBER CEMENT LAP SIDING (JAMES HARDIE OR EQUAL), SMOOTH, 6" REVEAL, COLOR - ARCTIC WHITE (CLASS 3)
FCP-1	FIBER CEMENT PANEL (JAMES HARDIE OR EQUAL), SMOOTH SIDING, COLOR - COBBLESTONE (CLASS 3)
FCP-2	FIBER CEMENT PANEL (JAMES HARDIE OR EQUAL), SMOOTH SIDING, COLOR - AGED PEWTER (CLASS 3)
RF	ARCHITECTURAL ASPHALT ROOFING SHINGLES, COLOR - CHARCOAL
SF-1	T.B. ALUMINUM STOREFRONT FRAMING, CLEAR ANODIZED FINISH
STN	CENTURION STONE, COASTAL OHIO LIMESTONE (CLASS 2)
TRM	5/4 HARDIE TRIM BOARD, SMOOTH, COLORPLUS, COLOR - ARCTIC WHITE
VIS	INSULATED VISION GLASS, CLEAR W/ LOW E COATING IN VINYL, RESIDENTIALSTYLE WINDOW (CLASS 1)

MISC EXTERIOR MATERIAL FINISHES

- TYPICAL U.O.N.
- EXPOSED CONCRETE: GRIND SMOOTH & RUB/COAT WITH CEMENT SLURRY.
 - METAL RAILINGS: GALVANIZED & PAINTED WHITE.
 - FASCIA & SOFFIT: METAL PREFINISHED TO MATCH ADJACENT ROOF COLOR.
 - SCUPPERS, GUTTERS & DOWNSPOUTS: METAL PREFINISHED WHITE.
 - CAULKS & SEALANTS: COLOR MATCHED TO ADJACENT MATERIAL.
 - HOLLOW METAL MAN DOORS & FRAMES: PAINTED TO MATCH ADJACENT MATERIAL.
 - OVERHEAD PANEL DOORS: METAL PRE-FINISHED WHITE.
 - LOUVERS: METAL PRE-FINISHED TO MATCH ADJACENT MATERIAL COLOR.
 - LIGHT FIXTURES: METAL PRE-FINISHED HOUSINGS TO MATCH ADJ. OPENING FRAMING.
 - MECHANICAL EQUIPMENT: IF NOT SCREENED, COLOR TO MATCH ADJACENT MATERIAL.
 - EXTERIOR UTILITY EQUIPMENT: IF ALLOWED, PAINTED TO MATCH ADJACENT MATERIAL.
- TRIM SIZES, TYP. U.O.N.:
- WINDOWS & DOORS 3-1/2"
 - VERTICAL 3-1/2"
 - HORIZONTAL 5-1/2"

EXTERIOR MATERIAL CALCULATIONS:

REAR ELEVATION: 7 795 SF EXCLUDING GLAZING (TOTAL = 10,429 SF)
 STONE/BRICK = 2738 SF (35%)
 FIBER CEMENT PANEL & BOARD: 5057 SF



1 BLDG TYPE A - REAR ELEVATION
 SCALE: 1/8" = 1'-0"

Rev. #	Date	Issue / Revision
1	12-09-2021	30% S&P
2	01-10-2022	60% S&P
3	04-20-2022	Issued For PERMIT
4	10-17-2022	REVISION

Job No. **21113** Proj. Mgr. **SP**

Sheet Title
BLDG TYPE A - EXTERIOR ELEVATIONS

Sheet No.

A-A202

EXTERIOR MATERIAL LEGEND	
MAT. LABEL	MATERIAL DESCRIPTION
BRK	MERIDIAN BRICK, THIN BRICK, COLOR - AMARO, NATURAL MORTAR (CLASS 2)
DS	PREFINISHED METAL DOWNSPOUT, COLOR - WHITE
FAS-1	HARDIE FASCIA BOARD, SMOOTH, COLOR - ARCTIC WHITE
FAS-2	PREFINISHED METAL FASCIA, COLOR - WHITE
FCB-1	FIBER CEMENT LAP SIDING (JAMES HARDIE OR EQUAL), SMOOTH, 6" REVEAL, COLOR - ARCTIC WHITE (CLASS 3)
FCP-1	FIBER CEMENT PANEL (JAMES HARDIE OR EQUAL), SMOOTH SIDING, COLOR - ARCTIC WHITE (CLASS 3)
FCP-2	FIBER CEMENT PANEL (JAMES HARDIE OR EQUAL), SMOOTH SIDING, COLOR - AGED PEWTER (CLASS 3)
RF	ARCHITECTURAL ASPHALT ROOFING SHINGLES, COLOR - CHARCOAL
SF-1	T.B. ALUMINUM STOREFRONT FRAMING, CLEAR ANODIZED FINISH
STN	CENTURION STONE, COASTAL OHIO LESTONE (CLASS 2)
TRM	5/8" HARDIE TRIM BOARD, SMOOTH, COLORPLUS, COLOR - ARCTIC WHITE
VIS	INSULATED VISION GLASS: CLEAR W/LOW E COATING IN VINYL, RESIDENTIALSTYLE WINDOW (CLASS 1)

- ### GENERAL EXTERIOR ELEVATION NOTES
- REFER TO ADDITIONAL NOTES AND REQUIREMENTS ON ALL OTHER DOCUMENTS AND OTHER DISCIPLINE DOCUMENTS.
 - ALL CONDUIT RUNS & SERVICE LINES SHALL BE GROUPED TOGETHER IN A NEAT & ORDERLY MANNER AND SHOULD PENETRATE THE WALL AT THE LOWEST POINT AND ARE NOT TO RUN OVER THE TOP OF PARAPET. ALL OTHER CONDUITS & JUNCTION BOXES FOR EXTERIOR FIXTURES & EQUIPMENT SHALL BE FULLY CONCEALED WITHIN THE BUILDING CONSTRUCTION.
 - ALL HORIZONTAL TRANSITIONS BETWEEN DIFFERENT MATERIALS SHALL BE FLASHED CONTINUOUSLY FROM UP BEHIND MATERIAL AND EXTEND OVER TO EXTERIOR FACE OF LOWER MATERIAL WITH DRAIN EDGE.
 - ANY RETURNS OR BLIND ELEVATIONS NOT SHOWN SHALL BE SIMILAR IN MATERIAL AND MAKEUP TO ADJACENT CONDITIONS OR OTHER SIMILAR CONDITIONS.
 - NO EXPOSED MASONRY/MATERIAL CORES, MASONRY RETURNS AT WINDOWS/OPENINGS ARE REQUIRED IF FRAMING IS NOT DEEP ENOUGH TO PROVIDE CLOSURE AT THE BACKSIDE OF MASONRY FOR AN EFFECTIVELY SEALED JOINT.
 - MATERIALS ABOVE CANOPIES & AWNINGS TO BE CONTINUED DOWN BEHIND THEM U.O.N., TYP.
 - ANY EXPOSED ROOFING MEMBRANE VISIBLE FROM A PUBLIC RIGHT AWAY MUST MATCH THE PRIMARY WALL MATERIAL COLOR.
 - INSTALL VERTICAL EXPANSION JOINTS PER STRUCTURAL OR MINIMAL AT COLUMN/GRID LINES AND AT THE HEAD OF DOOR JAMB/OPENINGS OR AS OTHERWISE NOTED OR WHERE REQUIRED PER STANDARD MATERIAL PRACTICE TO REDUCE STRESS CRACKING. NO CONTROL JOINT/EXPANSION JOINT AT MAIN STRUCTURAL BEARING LOCATIONS. VERIFY JOINTS WITH ARCHITECT.
 - CAULK & SEAL ALL TRANSITION-CONTROL-EXPANSION AT ALL EXTERIOR MATERIALS.
 - PROVIDE CAST REGLETS JUST IN FROM THE OUTER EDGE ON UNDERSIDE OF FACE MATERIAL OR DRIP EDGE AT ALL OVERHANGS & SOFFITS.
 - INSULATE AND SEAL TO ENSURE ADEQUATE AIR INFILTRATION BARRIER AROUND ALL EXTERIOR PENETRATIONS TO PREVENT WATER AND SPRINKLER PIPE FREEZING.
 - WHERE EXTERIOR PAVING ADJACENT TO BUILDING, TOP OF PAVING TO BE 1/4" LOWER THAN INTERIOR FINISH FLOOR, SLOPING CONTINUOUSLY AWAY FROM BUILDING A MINIMUM OF 5'. WHERE DOOR STOOP, 48" OUT FROM DOOR 1/4"(2%) MAX. SLOPE, AFTER 48" AWAY FROM DOOR 1/20(5%) MAXIMUM SLOPE TO PUBLIC WAY. (REFER TO CIVIL)
 - WHERE NO EXTERIOR PAVING ADJACENT TO BUILDING, TOP OF FINISHED LANDSCAPE A MINIMUM OF 4" BELOW INTERIOR FINISH FLOOR AND 4" BELOW EXTERIOR WALL FLASHING/WEEPS, SLOPING CONTINUOUSLY AWAY FROM BUILDING A MINIMUM OF 5'. (REFER TO CIVIL)
 - ADDRESS SHALL BE PROVIDED ON STREET SIDE OF BUILDING AND ON MONUMENT SIGN. NUMBERS A MINIMUM 5 INCH CONTRASTING COLOR NUMBERS WITH MINIMUM 1/2" STROKE.
 - IF ANY SIGNAGE OR SIGN BASE IS SHOWN IT IS FOR REFERENCE ONLY. FINAL DESIGNS AND/OR ALLOWANCES SHALL BE DETERMINED WITH APPROVED SIGNAGE PERMIT(S).
- ACTUAL DETAILS & DIMENSIONS MAY VARY AND ARE SUBJECT TO CHANGE. ALL DRAWINGS ARE SUBJECT TO AUTHORITY HAVING JURISDICTION APPROVAL. SIGNAGE SHOWN DOES NOT REPRESENT ALLOWABLE SIGNAGE PERMITTING/APPROVAL OF ALL SIGNAGE PER CURRENT CITY ORDINANCE BY OTHERS.

MISC EXTERIOR MATERIAL FINISHES

- TYPICAL U.O.N.
- EXPOSED CONCRETE: GRIND SMOOTH & RUB/COAT WITH CEMENT SLURRY.
 - METAL RAILINGS: GALVANIZED & PAINTED WHITE.
 - FASCIA & SOFFIT: METAL PREFINISHED TO MATCH ADJACENT ROOF COLOR.
 - SCUPPERS, GUTTERS & DOWNSPOUTS: METAL PREFINISHED WHITE.
 - CAULKS & SEALANTS: COLOR MATCHED TO ADJACENT MATERIAL.
 - HOLLOW METAL MAIN DOORS & FRAMES: PAINTED TO MATCH ADJACENT MATERIAL.
 - OVERHEAD PANEL DOORS: METAL PRE-FINISHED WHITE.
 - LOUVERS: METAL PRE-FINISHED TO MATCH ADJACENT MATERIAL COLOR.
 - LIGHT FIXTURES: METAL PRE-FINISHED HOUSINGS TO MATCH ADJ. OPENING FRAMING.
 - MECHANICAL EQUIPMENT: IF NOT SCREENED, COLOR TO MATCH ADJACENT MATERIAL.
 - EXTERIOR UTILITY EQUIPMENT: IF ALLOWED, PAINTED TO MATCH ADJACENT MATERIAL.
- TRIM SIZES, TYP. U.O.N.:
- WINDOWS & DOORS 3-1/2"
 - VERTICAL 3-1/2"
 - HORIZONTAL 5-1/2"

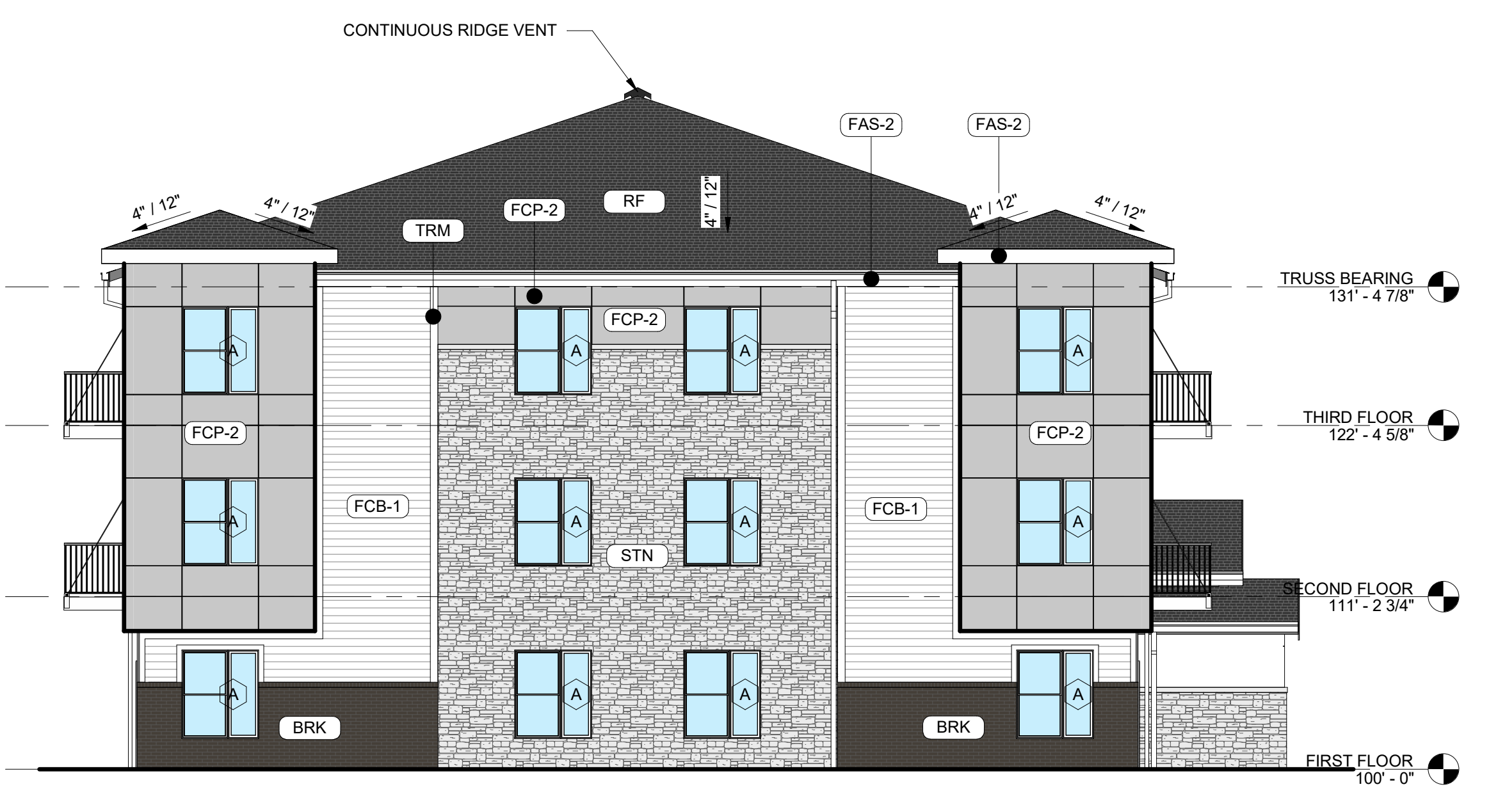


1 BLDG TYPE B - FRONT ELEVATION
SCALE: 1/8" = 1'-0"

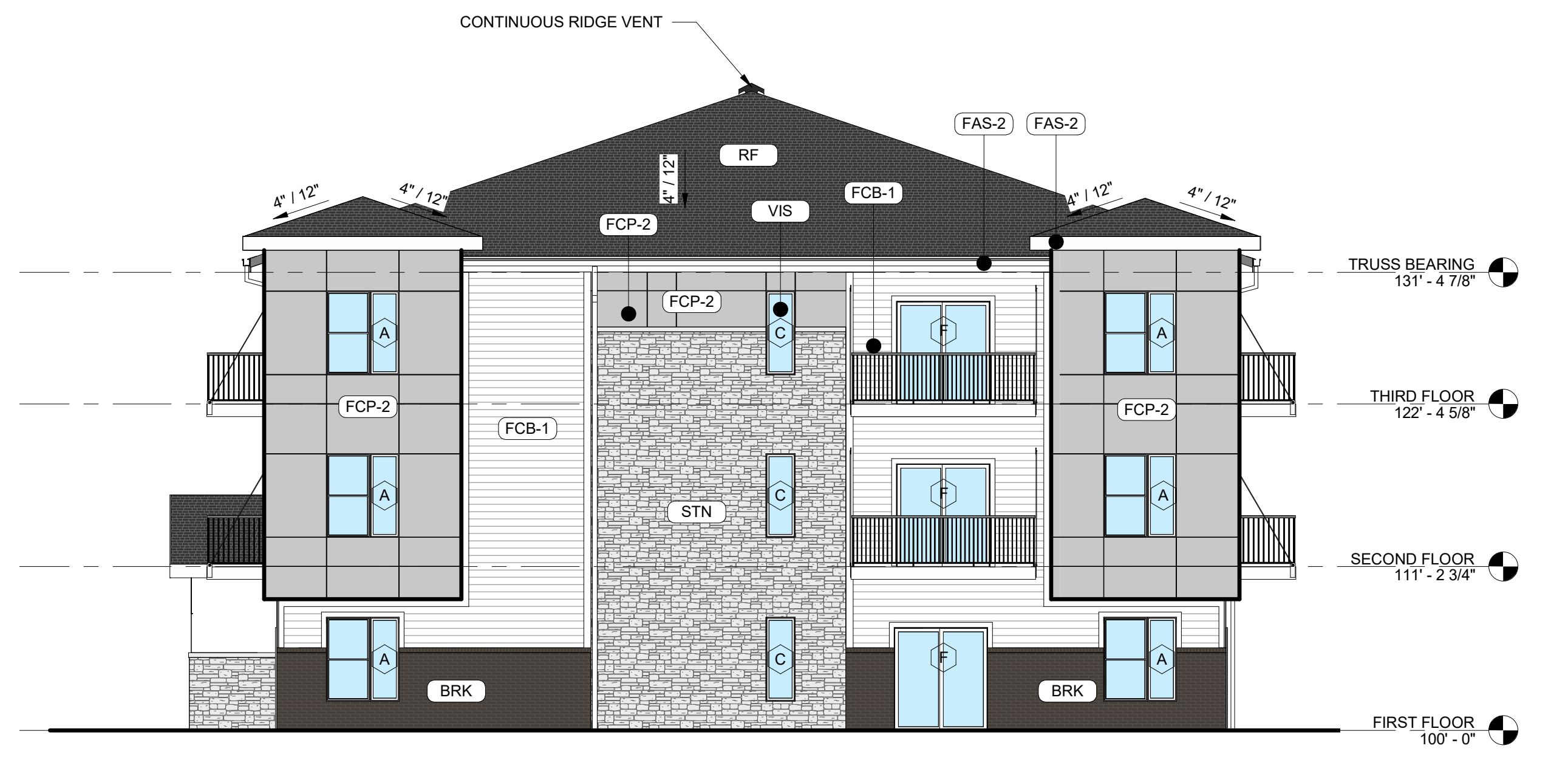
EXTERIOR MATERIAL CALCULATIONS:

FRONT ELEVATION EXCLUDING OPENINGS: 7789 SF (TOTAL = 10,442 SF)
STONE/BRICK = 2821 SF (36% >35%)
FIBER CEMENT PANEL & BOARD: 4968 SF
SIDE ELEVATION 1 EXCLUDING OPENINGS: 1808 SF (TOTAL = 2210 SF)
STONE/BRICK = 706 SF (39% >35%)
FIBER CEMENT PANEL & BOARD: 1102 SF
SIDE ELEVATION 2 EXCLUDING OPENINGS: 1933 SF (TOTAL = 2267 SF)
STONE/BRICK = 729 SF (38% >35%)
FIBER CEMENT PANEL & BOARD: 1204 SF

SOUTH ELEVATION BUILDING #1
WEST ELEVATION BUILDING #2



2 BLDG TYPE B - SIDE ELEVATION 1
SCALE: 1/8" = 1'-0"



3 BLDG TYPE B - SIDE ELEVATION 2
SCALE: 1/8" = 1'-0"

Rev. #	Issue / Revision	Date
1	30% S&P	12-09-2022
2	60% S&P	01-10-2022
3	Issued For PERMIT	04-20-2022
4	REVISION	10-17-2022

Job No. 21113
Proj. Mgr. SP

Sheet Title
BLDG TYPE B - EXTERIOR ELEVATIONS

Sheet No. A-B201

EXTERIOR MATERIAL LEGEND	
MAT. LABEL	MATERIAL DESCRIPTION
BRK	MERIDIAN BRICK, THIN BRICK, COLOR - AMARO, NATURAL MORTAR (CLASS 2)
DS	PREFINISHED METAL DOWNSPOUT, COLOR - WHITE
FAS-1	HARDIE FASCIA BOARD, SMOOTH, COLOR - ARCTIC WHITE
FAS-2	PREFINISHED METAL FASCIA, COLOR - WHITE
FCB-1	FIBER CEMENT LAP SIDING (JAMES HARDIE OR EQUAL), SMOOTH, 6" REVEAL, COLOR - ARCTIC WHITE (CLASS 3)
FCP-1	FIBER CEMENT PANEL (JAMES HARDIE OR EQUAL), SMOOTH SIDING, COLOR - ARCTIC WHITE (CLASS 3)
FCP-2	FIBER CEMENT PANEL (JAMES HARDIE OR EQUAL), SMOOTH SIDING, COLOR - AGED PEWTER (CLASS 3)
RF	ARCHITECTURAL ASPHALT ROOFING SHINGLES, COLOR - CHARCOAL
SF-1	T.B. ALUMINUM STOREFRONT FRAMING: CLEAR ANODIZED FINISH
STN	CENTURION STONE, COASTAL OHIO LIMESTONE (CLASS 2)
TRM	5/4 HARDIE TRIM BOARD, SMOOTH, COLORPLUS, COLOR - ARCTIC WHITE
VIS	INSULATED VISION GLASS, CLEAR W/ LOW E COATING IN VINYL, RESIDENTIALSTYLE WINDOW (CLASS 1)

MISC EXTERIOR MATERIAL FINISHES

- TYPICAL U.O.N.
- EXPOSED CONCRETE: GRIND SMOOTH & RUB/COAT WITH CEMENT SLURRY.
 - METAL RAILINGS: GALVANIZED & PAINTED WHITE
 - FASCIA & SOFFIT: METAL PREFINISHED TO MATCH ADJACENT ROOF COLOR.
 - SCUPPERS, GUTTERS & DOWNSPOUTS: METAL PREFINISHED WHITE
 - CAULKS & SEALANTS: COLOR MATCHED TO ADJACENT MATERIAL.
 - HOLLOW METAL MAN DOORS & FRAMES: PAINTED TO MATCH ADJACENT MATERIAL.
 - OVERHEAD PANEL DOORS: METAL PRE-FINISHED WHITE.
 - LOUVERS: METAL PRE-FINISHED TO MATCH ADJACENT MATERIAL COLOR.
 - LIGHT FIXTURES: METAL PRE-FINISHED HOUSINGS TO MATCH ADJ. OPENING FRAMING.
 - MECHANICAL EQUIPMENT: IF NOT SCREENED, COLOR TO MATCH ADJACENT MATERIAL.
 - EXTERIOR UTILITY EQUIPMENT: IF ALLOWED, PAINTED TO MATCH ADJACENT MATERIAL.
- TRIM SIZES, TYP. U.O.N.:
- WINDOWS & DOORS: 3-1/2"
 - VERTICAL: 3-1/2"
 - HORIZONTAL: 5-1/2"

EXTERIOR MATERIAL CALCULATIONS:

REAR ELEVATION: 7 795 SF EXCLUDING GLAZING (TOTAL = 10,429 SF)
 STONE/BRICK = 2738 SF (35%)
 FIBER CEMENT PANEL & BOARD: 5057 SF



1 BLDG TYPE B - REAR ELEVATION
 SCALE: 1/8" = 1'-0"

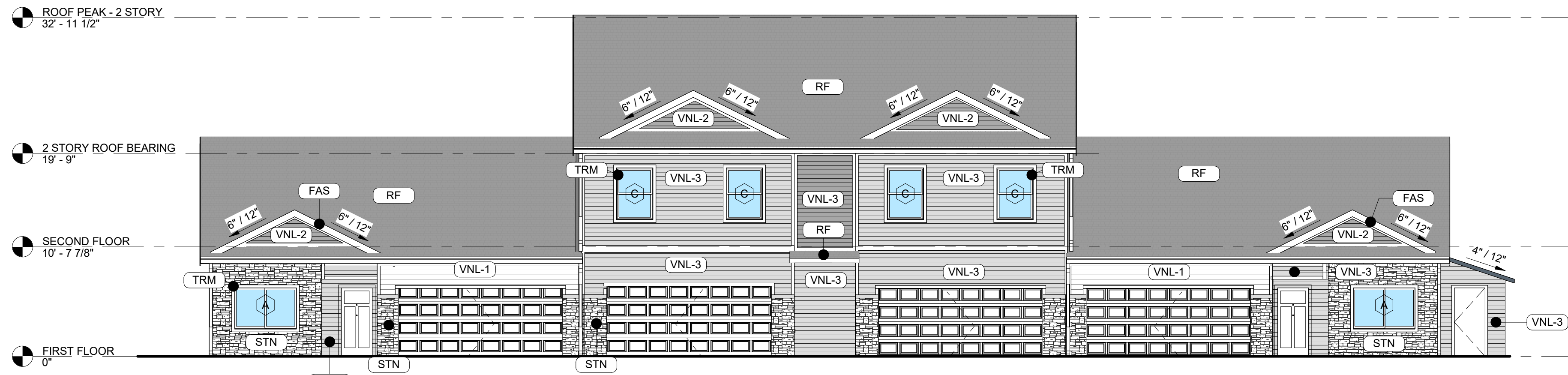
Rev. #	Issue / Revision	Date
1	30% S&P	12-09-2022
2	60% S&P	01-10-2022
3	Issued For PERMIT	04-20-2022
4	REVISION	10-17-2022

Job No. **21113** Proj. Mgr. **SP**

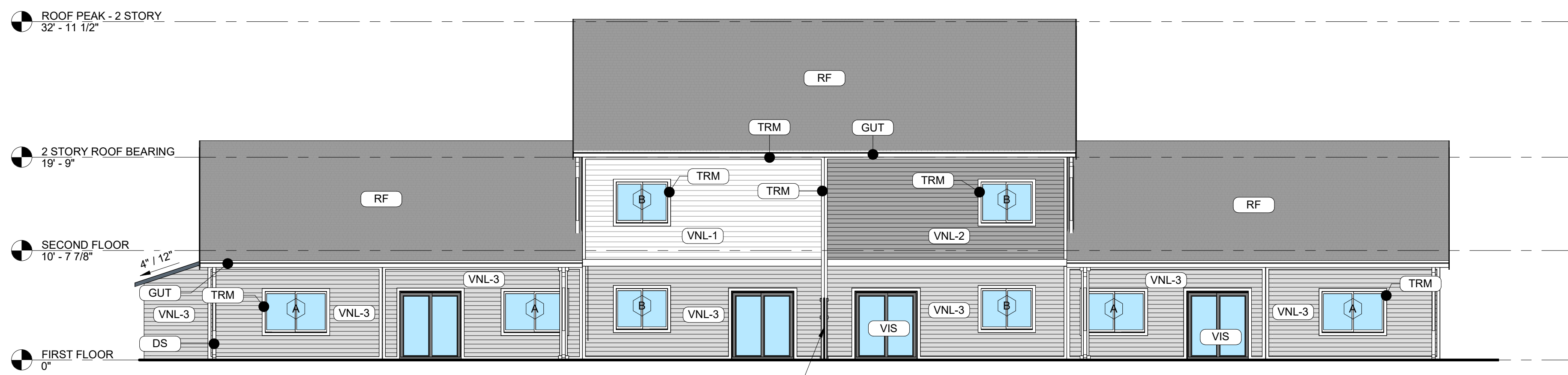
Sheet Title
BLDG TYPE B - EXTERIOR ELEVATIONS

Sheet No.

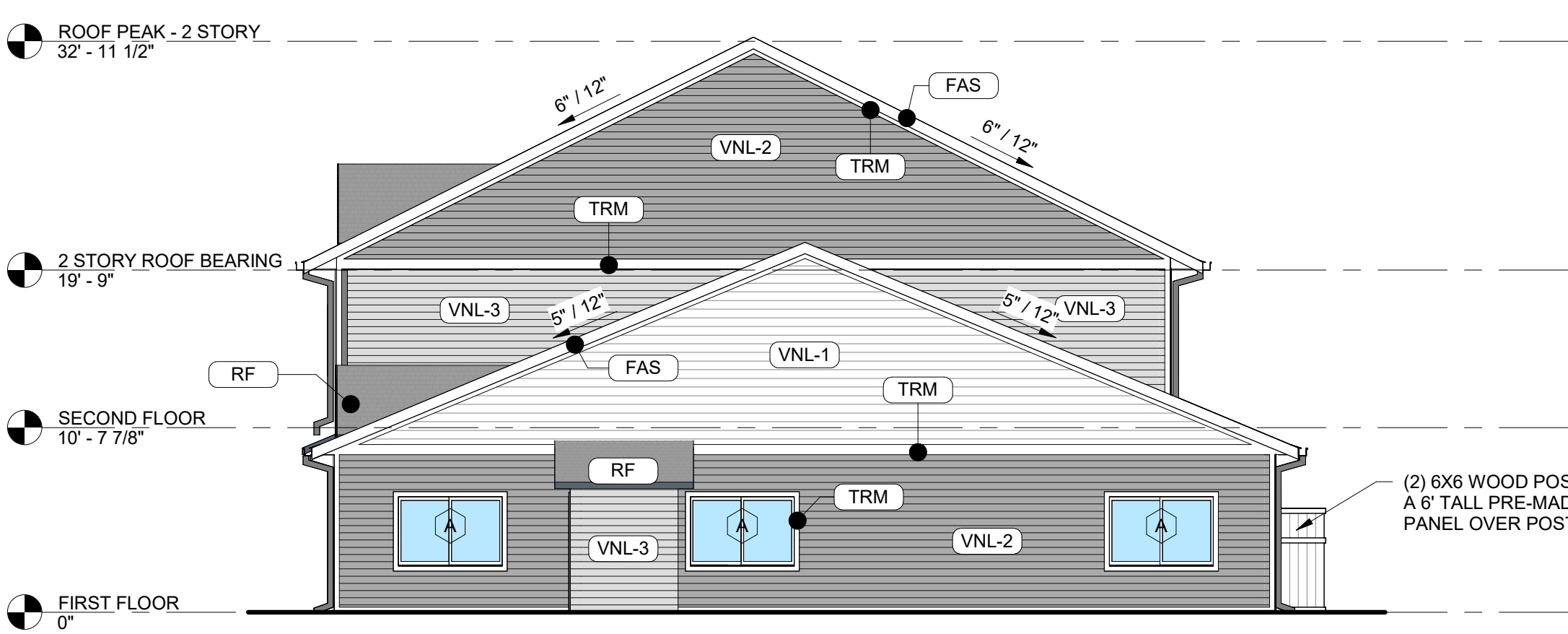
A-B202



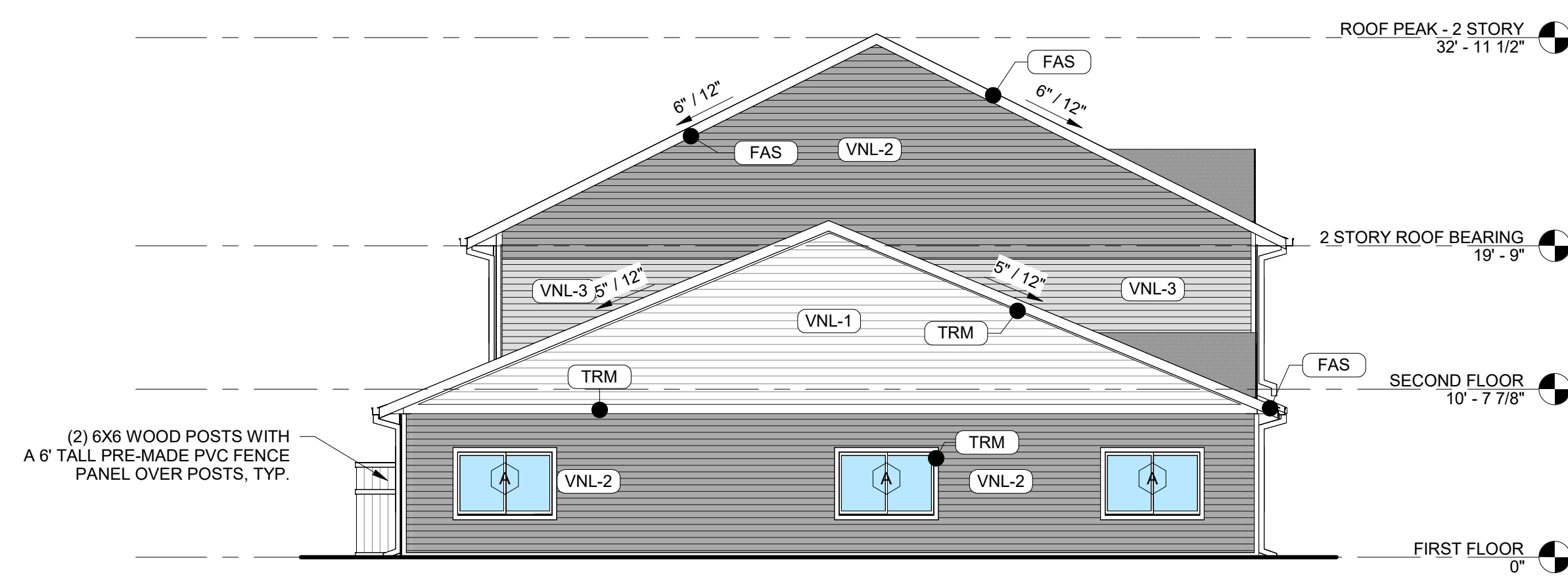
1 FRONT ELEVATION
SCALE: 1/8" = 1'-0"



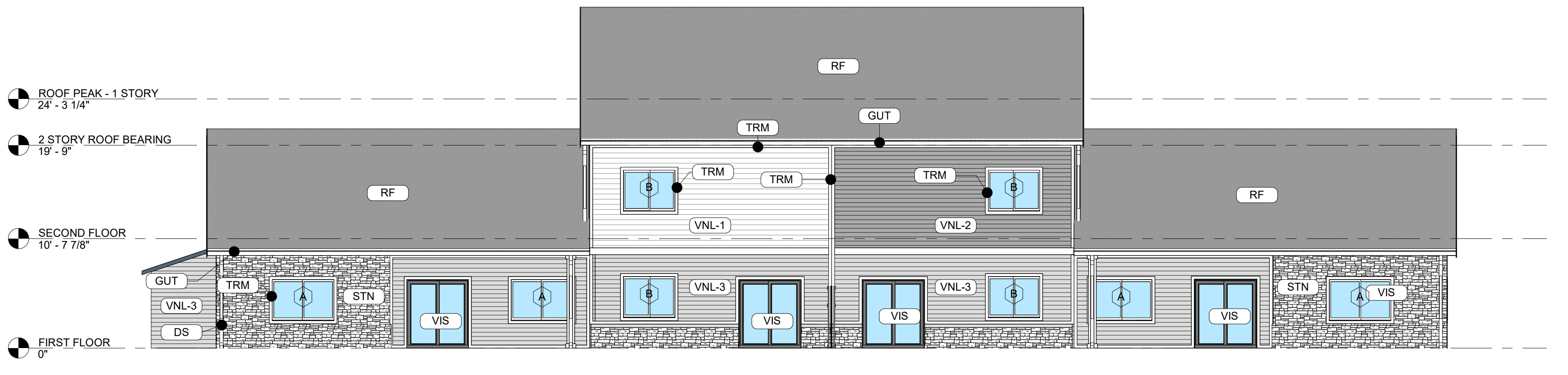
2 REAR ELEVATION
SCALE: 1/8" = 1'-0"



3 RIGHT ELEVATION
SCALE: 1/8" = 1'-0"



4 LEFT ELEVATION
SCALE: 1/8" = 1'-0"



5 REAR ELEVATION - FACING 6TH STREET
SCALE: 1/8" = 1'-0"

GENERAL EXTERIOR ELEVATION NOTES:

- REFER TO ADDITIONAL NOTES AND REQUIREMENTS ON ALL OTHER DOCUMENTS AND OTHER DISCIPLINES DOCUMENTS.
- ALL CONDUIT RUNS & SERVICE LINES SHALL BE GROUPED TOGETHER IN A NEAT & ORDERLY MANNER AND SHOULD PENETRATE THE WALL AT THE LOWEST POINT AND ARE NOT TO RUN OVER THE TOP OF PARAPET. ALL OTHER CONDUITS & JUNCTION BOXES FOR EXTERIOR FIXTURES & EQUIPMENT SHALL BE FULLY CONCEALED WITHIN THE BUILDING CONSTRUCTION.
- ALL HORIZONTAL TRANSITIONS BETWEEN DIFFERENT MATERIALS SHALL BE FLASHED CONTINUOUS FROM UP BEHIND UPPER MATERIAL AND EXTEND OVER TO EXTERIOR FACE OF LOWER MATERIAL WITH DRIP EDGE.
- ANY RETURNS OR BLIND ELEVATIONS NOT SHOWN SHALL BE SIMILAR IN MATERIAL AND MAKEUP TO ADJACENT CONDITIONS OR OTHER SIMILAR CONDITIONS.
- NO EXPOSED MASONRY/MATERIAL CORES. MASONRY RETURNS AT WINDOWS/OPENINGS ARE REQUIRED IF FRAMING IS NOT DEEP ENOUGH TO PROVIDE CLOSURE AT THE BACKSIDE OF MASONRY FOR AN EFFECTIVELY SEALED JOINT.
- CAULK & SEAL ALL TRANSITION-CONTROL-EXPANSION AT ALL EXTERIOR MATERIALS.
- PROVIDE CAST REGLETS JUST IN FROM THE OUTER EDGE ON UNDERSIDE OF FACE MATERIAL OR DRIP EDGE AT ALL OVERHANGS & SOFFITS.
- INSULATE AND SEAL TO ENSURE ADEQUATE AIR INFILTRATION BARRIER AROUND ALL EXTERIOR PENETRATIONS TO PREVENT WATER AND SPRINKLER PIPE FREEZING.
- WHERE EXTERIOR PAVING ADJACENT TO BUILDING, TOP OF PAVING TO BE 1/4" LOWER THAN INTERIOR FINISH FLOOR, SLOPING CONTINUOUSLY AWAY FROM BUILDING A MINIMUM OF 5'. WHERE DOOR STOOP, 48" OUT FROM DOOR 1:48(2%) MAX. SLOPE, AFTER 48" AWAY FROM DOOR 1:20(5%) MAXIMUM SLOPE TO PUBLIC WAY. (REFER TO CIVIL)
- WHERE NO EXTERIOR PAVING ADJACENT TO BUILDING, TOP OF FINISHED LANDSCAPE A MINIMUM OF 4" BELOW INTERIOR FINISH FLOOR AND 4" BELOW EXTERIOR WALL FLASHING/WEEPS, SLOPING CONTINUOUSLY AWAY FROM BUILDING A MINIMUM OF 5'. (REFER TO CIVIL)
- ADDRESS SHALL BE PROVIDED ON STREET SIDE OF BUILDING AND ON MONUMENT SIGN. NUMBERS A MINIMUM 5 INCH CONTRASTING COLOR NUMBERS WITH MINIMUM 1/2" STROKE.

ACTUAL DETAILS & DIMENSIONS MAY VARY AND ARE SUBJECT TO CHANGE. ALL DRAWINGS ARE SUBJECT TO AUTHORITY HAVING JURISDICTION APPROVAL. SIGNAGE SHOWN DOES NOT REPRESENT ALLOWABLE SIGNAGE PERMITTING/APPROVAL OF ALL SIGNAGE PER CURRENT CITY ORDINANCE BY OTHERS.

EXTERIOR MATERIAL LEGEND	
MAT. LABEL	MATERIAL DESCRIPTION
DS	PREFINISHED METAL DOWNSPOUT: WHITE
FAS	VINYL FASCIA BOARD, SMOOTH, COLOR - WHITE
GUT	PREFINISHED METAL GUTTER: WHITE
RF	ARCHITECTURAL ASPHALT ROOFING SHINGLES, COLOR - CHARCOAL
STN	CENTURION STONE, COASTAL OHIO LIMESTONE W/ ASSOCIATED STONE SILL CAP
TRM	VINYL TRIM BOARD, SMOOTH, COLOR - WHITE
VIS	INSULATED VISION GLASS: CLEAR W/ LOW E COATING IN VINYL RESIDENTIAL STYLE WINDOW
VNL-1	VINYL LAP SIDING, 6" REVEAL, COLOR - WHITE
VNL-2	VINYL LAP SIDING, 6" REVEAL, COLOR - GRAY
VNL-3	VINYL LAP SIDING, 6" REVEAL, COLOR - LIGHT GRAY

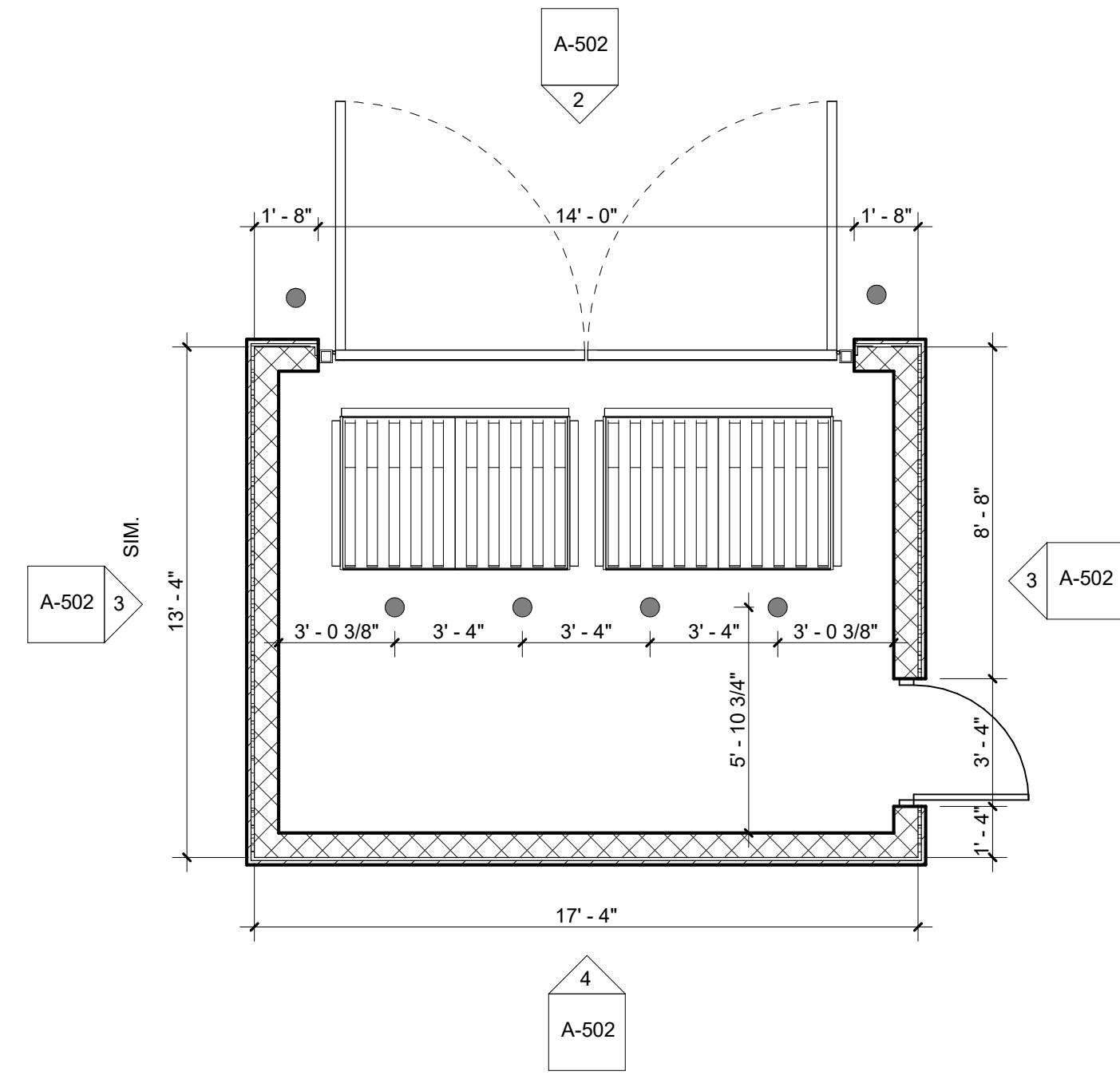
MISCELLANEOUS EXTERIOR MATERIAL FINISHES:

- TYPICAL U.O.N.
- EXPOSED CONCRETE: GRIND SMOOTH & RUB/COAT WITH CEMENT SLURRY.
 - EXPOSED LINTELS: GALVANIZED & PAINTED TO MATCH ADJACENT MATERIAL ABOVE.
 - FASCIA & SOFFIT: METAL PREFINISHED TO MATCH ADJACENT ROOF COLOR.
 - GUTTERS & DOWNSPOUTS: METAL PREFINISHED WHITE.
 - CAULKS & SEALANTS: COLOR MATCHED TO ADJACENT MATERIAL.
 - HOLLOW METAL MAN DOORS & FRAMES: PAINTED TO MATCH ADJACENT MATERIAL.
 - GARAGE DOORS: METAL PRE-FINISHED WHITE.
 - LOUVERS: METAL PRE-FINISHED TO MATCH ADJACENT MATERIAL COLOR.
 - LIGHT FIXTURES: METAL PRE-FINISHED WHITE.
- TRIM SIZES, TYP. U.O.N.:
- WINDOWS & DOORS 5-1/2"
 - VERTICAL 5-1/2"
 - HORIZONTAL 9-1/4"

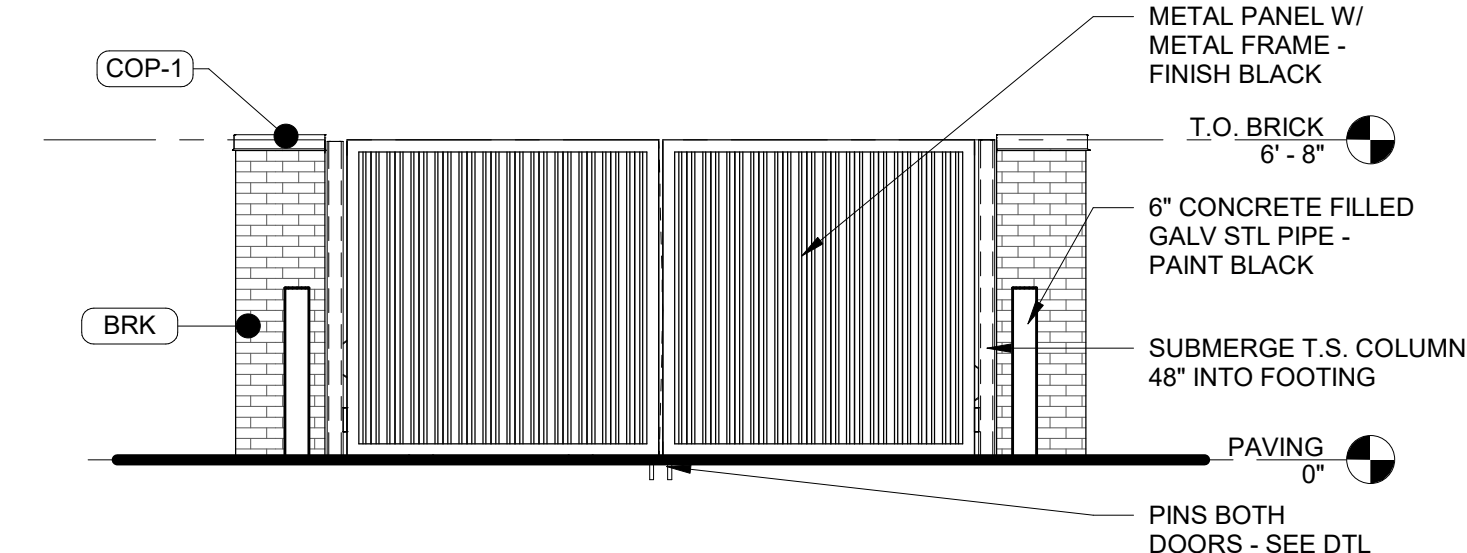
EXTERIOR MATERIAL CALCULATIONS

FRONT ELEVATION = 1,171 SF (EXCLUDING WINDOW AND DOORS)
 BRICK / STONE = 237 SF (20%)
 VINYL SIDING = 934 SF (80%)

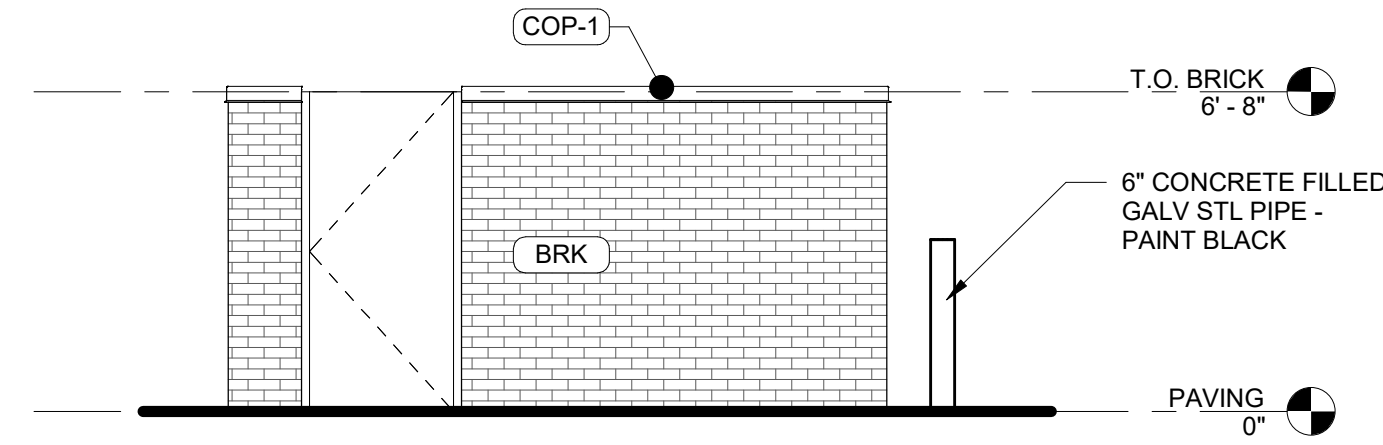
6TH STREET REAR ELEVATION = 1,254 SF (EXCLUDING WINDOW AND DOORS)
 BRICK / STONE = 329 SF (26%)
 VINYL SIDING = 925 SF (74%)



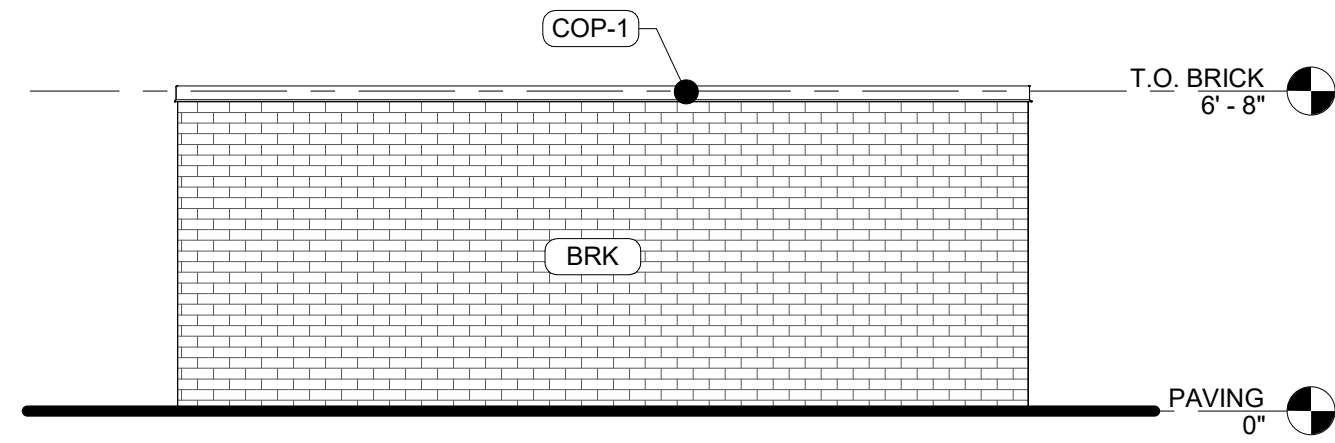
1 TRASH ENCLOSURE PLAN
SCALE: 1/4" = 1'-0"



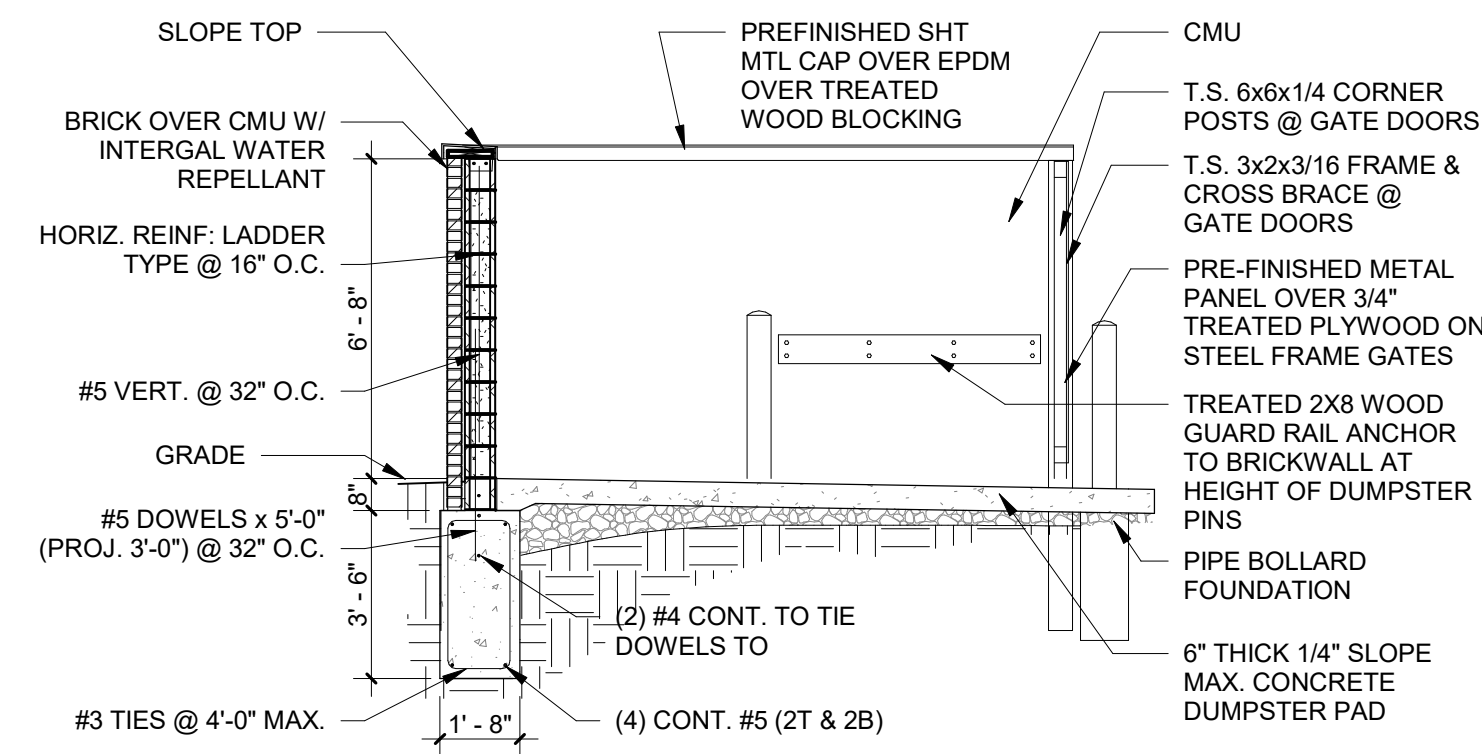
2 TRASH ENCLOSURE FRONT ELEVATION
SCALE: 1/4" = 1'-0"



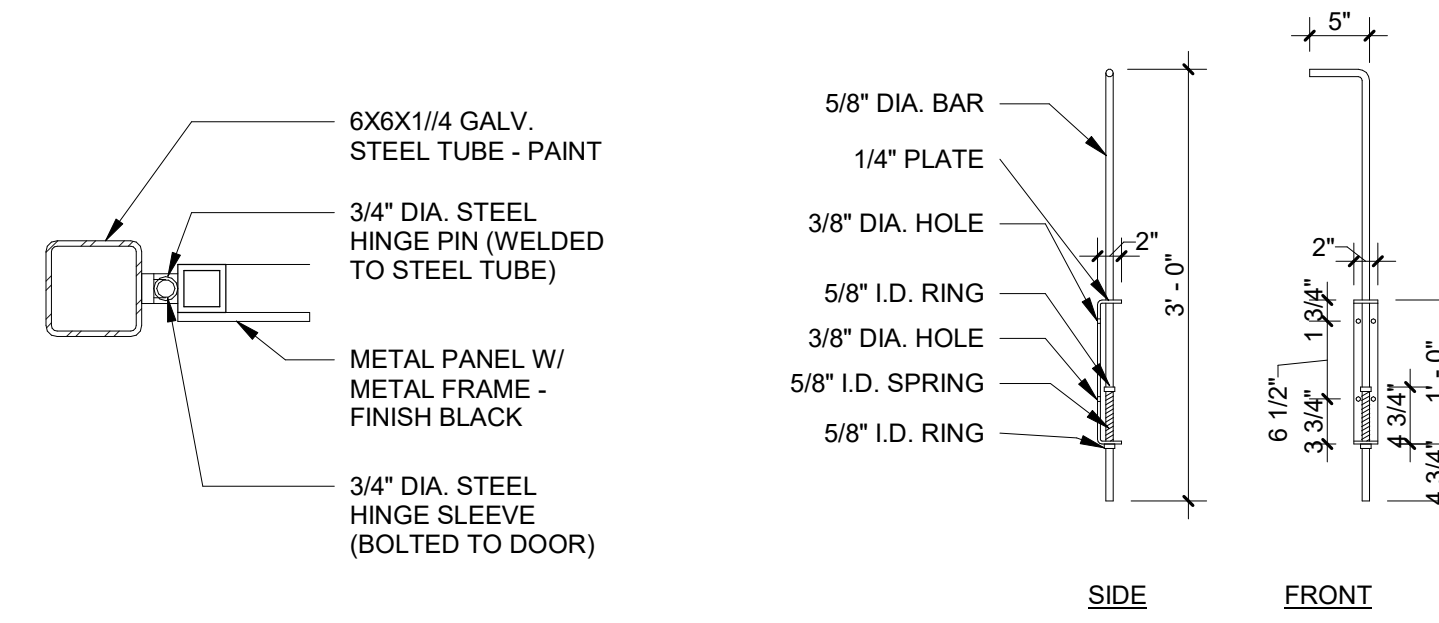
3 TRASH ENCLOSURE SIDE ELEVATION
SCALE: 1/4" = 1'-0"



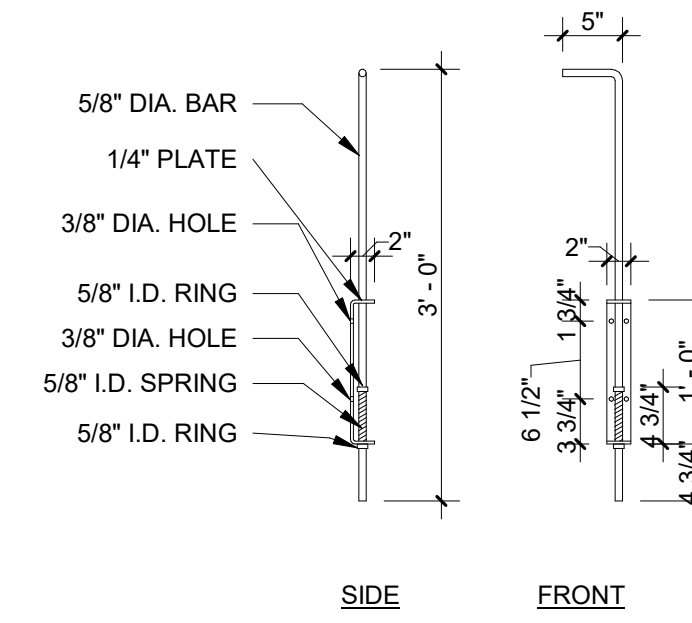
4 TRASH ENCLOSURE BACK ELEVATION
SCALE: 1/4" = 1'-0"



5 TRASH CROSS SECTION
SCALE: 1/4" = 1'-0"



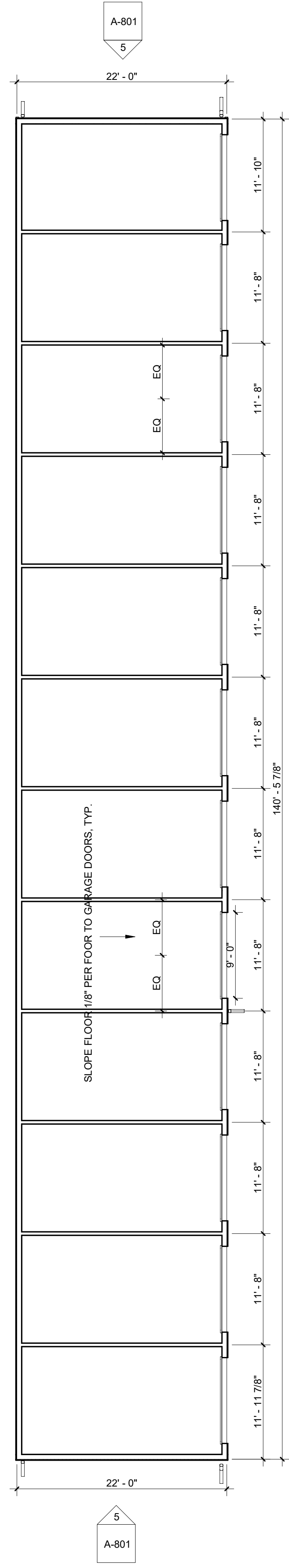
6 TRASH HINGE
SCALE: 1 1/2" = 1'-0"



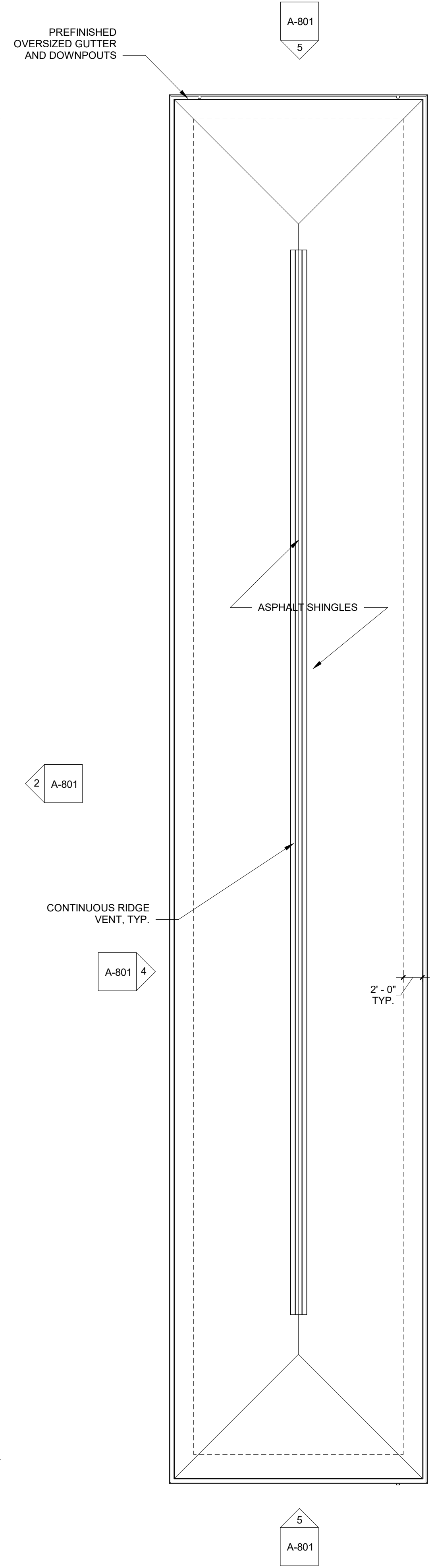
7 TRASH PIN
SCALE: 3/4" = 1'-0"

GENERAL DETAIL NOTES:

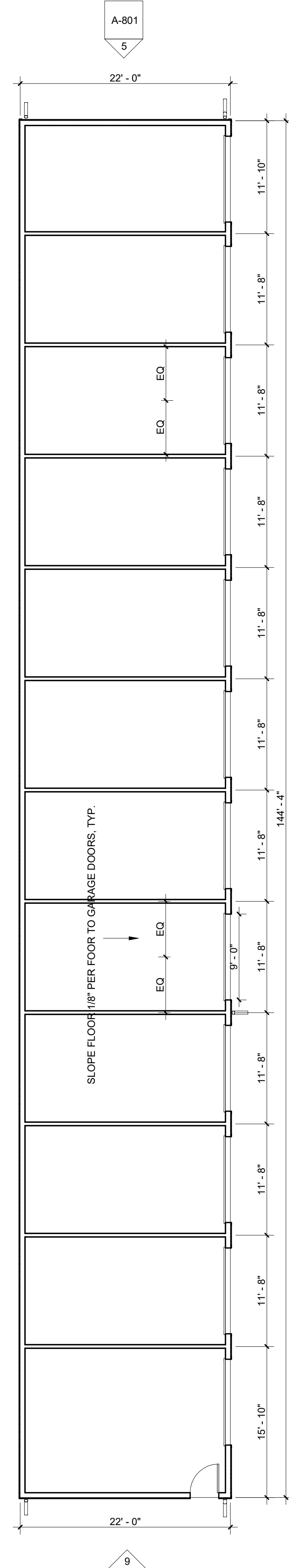
1. REFER TO ADDITIONAL NOTES & REQUIREMENTS ON ALL OTHER DOCUMENTS & OTHER DISCIPLINES DOCUMENTS.
2. ALL HORIZONTAL TRANSITIONS BETWEEN DIFFERENT MATERIALS SHALL BE FLASHED CONTINUOUS FROM UP BEHIND TO UNDER UPPER MATERIAL & EXTEND OVER TO EXTERIOR FACE OF LOWER MATERIAL. SOFT JOINTS REQUIRED BETWEEN DISSIMILAR MATERIALS.
3. INSTALL VERTICAL EXPANSION JOINTS MINIMAL AT COLUMN/GRID LINE AND AT THE HEAD OF DOOR JAMBS/OPENING OR AS OTHERWISE NOTED OR WHERE REQUIRED PER STANDARD MATERIAL PRACTICES TO REDUCE STRESS CRACKING. NO CONTROL JOINTS/ EXPANSION JOINTS AT MAIN STRUCTURAL BEARING. KEEP AWAY 2'-6" MIN.
4. CAULK & SEAL ALL TRANSITION-CONTROL-EXPANSION AT ALL EXTERIOR MATERIALS. ALL SEALANTS SHOULD BE COLOR-MATCHED TO ADJACENT MATERIAL.
5. INSULATE AND SEAL TO ENSURE ADEQUATE AIR INFILTRATION BARRIER AROUND ALL EXTERIOR PENETRATIONS TO PREVENT WATER AND SPRINKLER PIPE FREEZING.
6. ALL METAL EXPOSED TO EXTERIOR OR EXPOSED TO MOISTURE SHALL BE GALVANIZED
7. STAINLESS STEEL CLIPS ARE REQUIRED FOR ANY MASONRY LARGER THAN 8x16 FACE SIZE



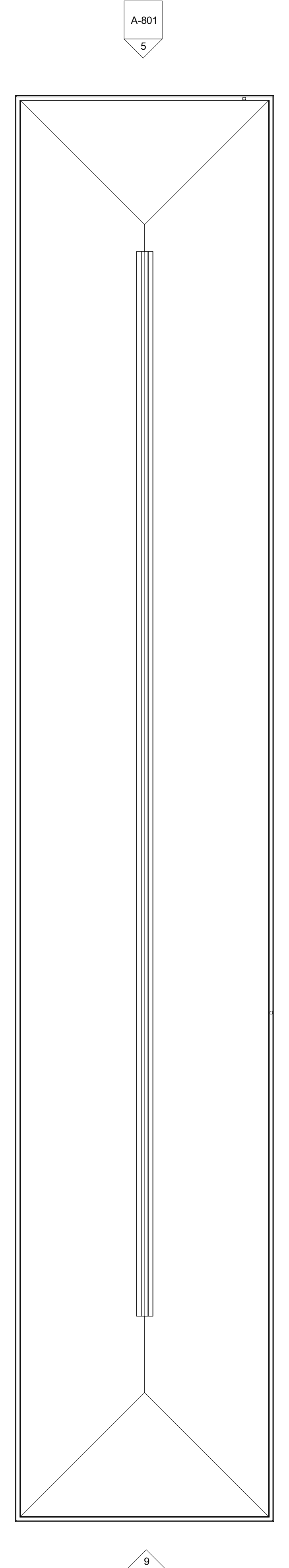
1 GARAGE PLAN
SCALE: 1/8" = 1'-0"



8 GARAGE ROOF PLAN
SCALE: 1/8" = 1'-0"

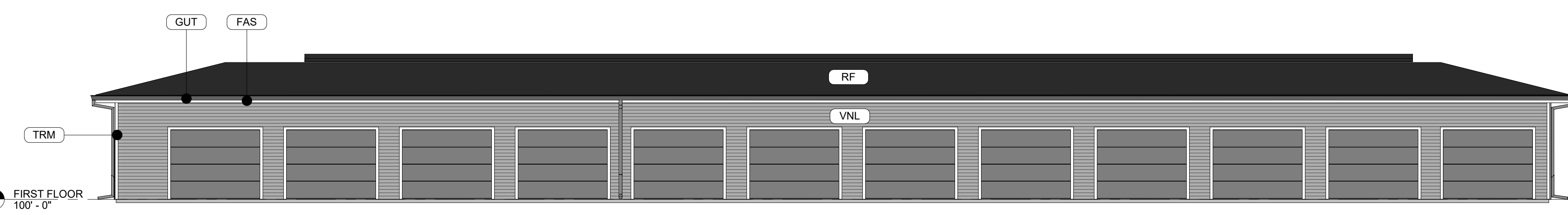


3 GARAGE W. ADA STALL PLAN
SCALE: 1/8" = 1'-0"

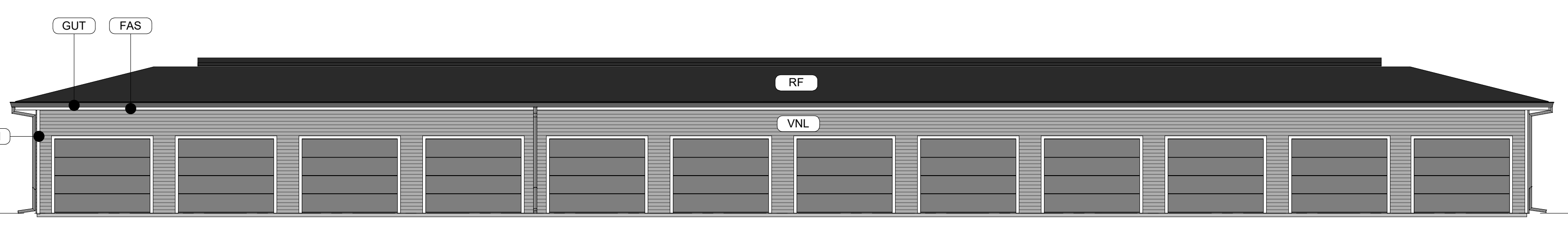


6 GARAGE W. ADA STALL ROOF PLAN
SCALE: 1/8" = 1'-0"

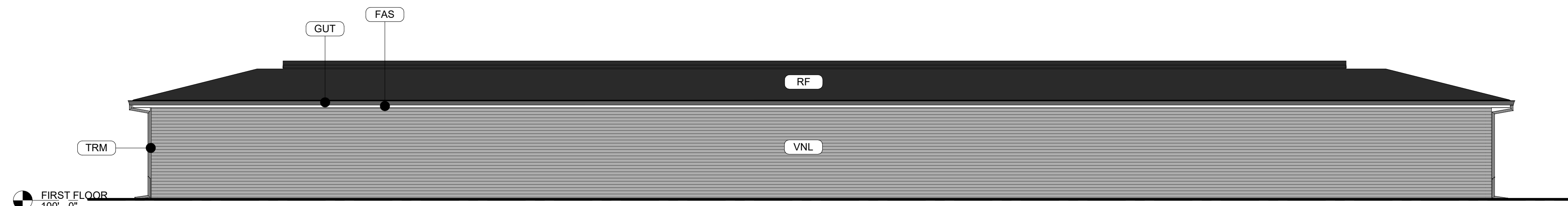
EXTERIOR MATERIAL LEGEND	
MAT. LABEL	MATERIAL DESCRIPTION
FAS	PREFINISHED METAL FASCIA, COLOR - WHITE
GUT	PREFINISHED SEAMLESS GUTTERS, COLOR - WHITE
RF	ARCHITECTURAL ASPHALT ROOFING SHINGLES, COLOR - CHARCOAL
TRM	VINYL TRIM (CRANE, PARKVIEW OR EQUAL), SMOOTH, COLOR - WHITE
VNL	VINYL LAP SIDING (CRANE, PARKVIEW OR EQUAL), SMOOTH, 6" REVEAL, COLOR - DARK GRAY



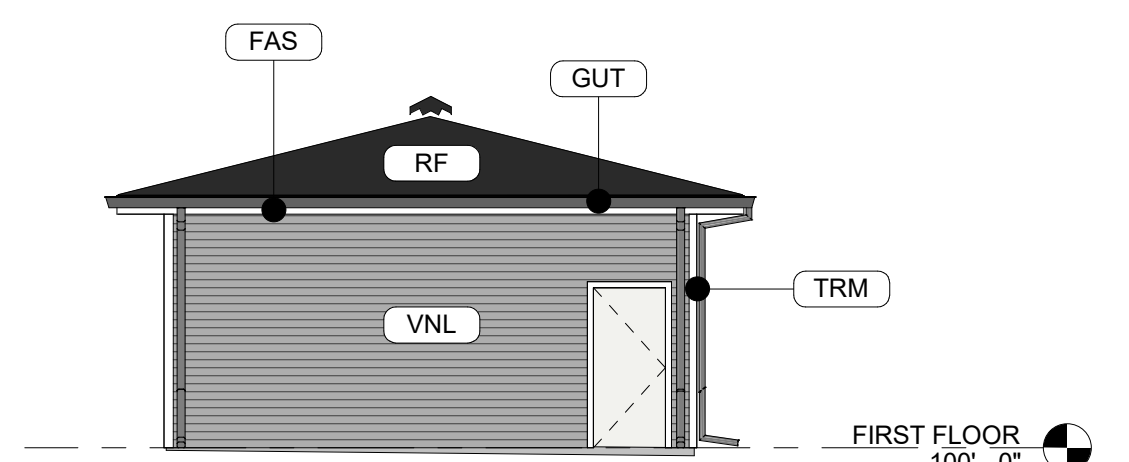
7 GARAGE FRONT ELEVATION W. ADA STALL
SCALE: 1/8" = 1'-0"



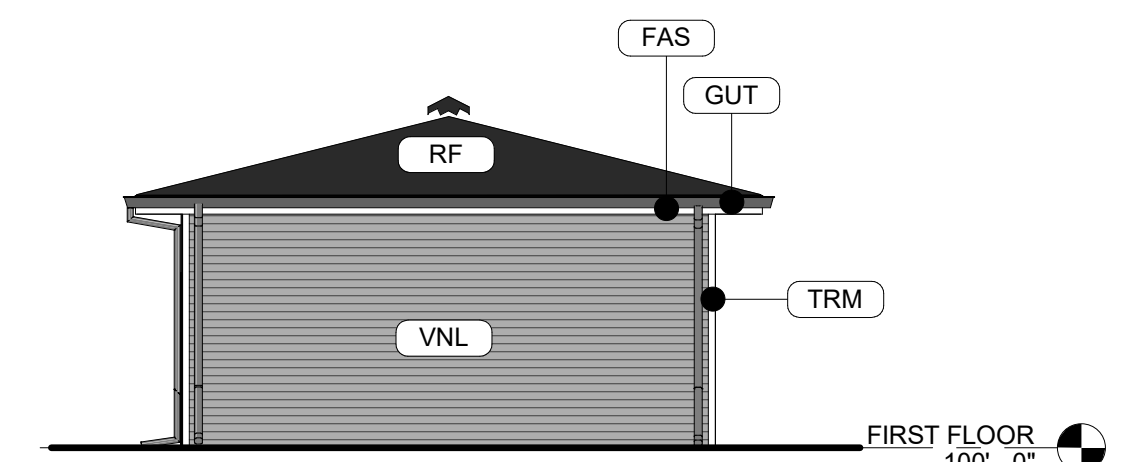
2 GARAGE FRONT ELEVATION
SCALE: 1/8" = 1'-0"



4 TYPICAL GARAGE REAR ELEVATION
SCALE: 1/8" = 1'-0"



9 GARAGE ADA SIDE
SCALE: 1/8" = 1'-0"



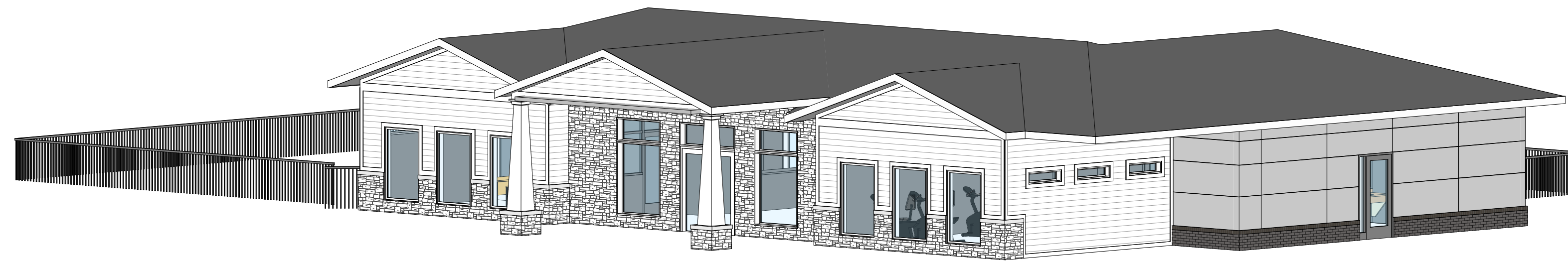
5 GARAGE NON-ADA SIDE
SCALE: 1/8" = 1'-0"

Rev.	Issued For	Site Plan
1	Issued For	Site Plan

Job No. **22XXX** Proj. Mgr. **SP**

Sheet Title **GARAGE PLANS & ELEVATIONS**

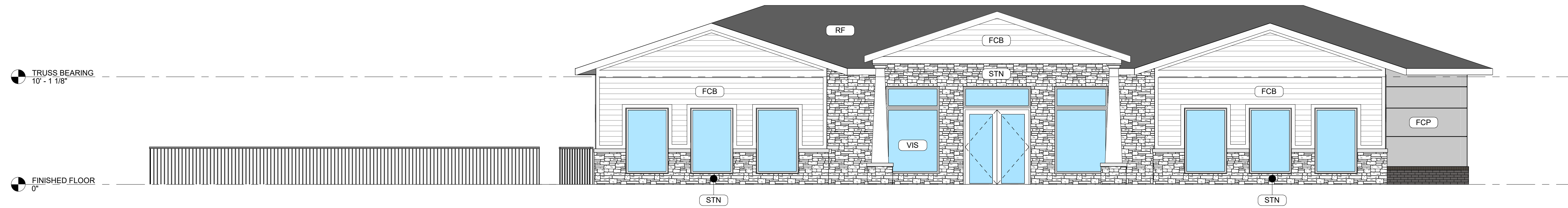
Sheet No. **A-801**



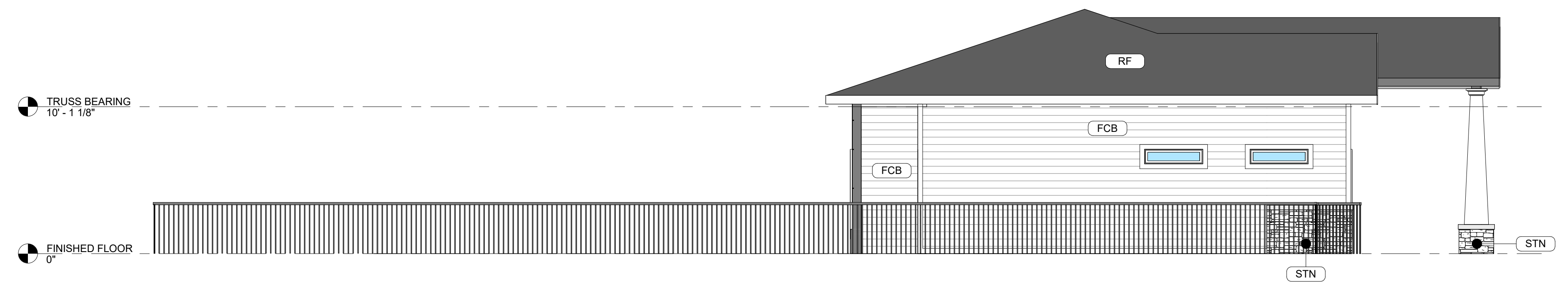
3D VIEW

EXTERIOR MATERIAL LEGEND	
MAT. LABEL	MATERIAL DESCRIPTION
BRK	MERIDIAN THIN BRICK - AMARO; NATURAL MORTAR
FAS	PREFINISHED METAL FASCIA, COLOR - WHITE
FCB	FIBER CEMENT LAP SIDING, 6" REVEAL, COLOR - WHITE
FCP	FIBER CEMENT PANEL SMOOTH SIDING, COLOR - DARK GRAY
FCT	5/4 HARDIE TRIM BOARD, SMOOTH, COLORPLUS, ARCTIC WHITE
RF	ARCHITECTURAL ASPHALT ROOFING SHINGLES, COLOR- CHARCOAL
SF	T.B. ALUMINUM STOREFRONT FRAMING; CLEAR ANODIZED FINISH
STN	MANUFACTURED VENEER STONE (INSTALLED PER MFR.)
VIS	1" INSULATED VISION GLASS; CLEAR W/ LOW E COATING

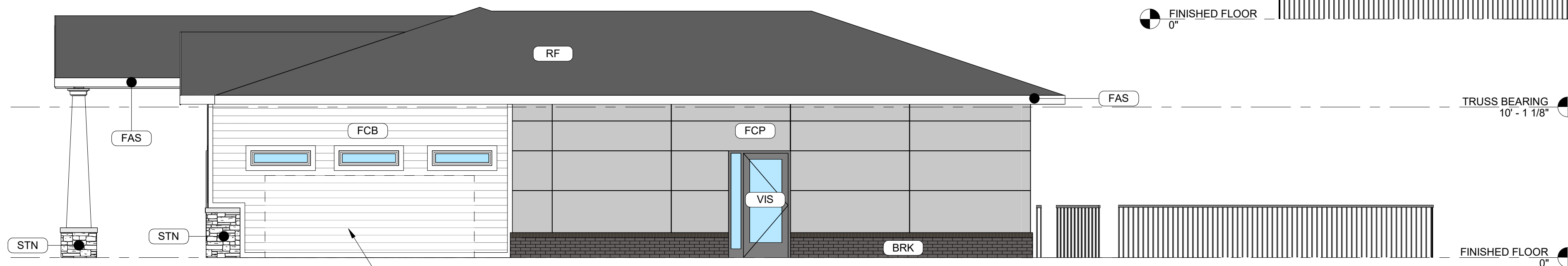
- H. METAL MAN DOORS & FRAMES: PAINTED TO MATCH ADJACENT MATERIAL.
- GUTTERS AND DOWNSPOUTS: METAL PREFINISHED TO MATCH ADJACENT MATERIAL.
- FASCIA AND SOFFIT: METAL PREFINISHED TO MATCH ROOF COLOR.
- CAULKS AND SEALANTS: COLOR MATCHED TO ADJACENT MATERIAL.



1 NORTH ELEVATION
SCALE: 3/16" = 1'-0"



3 EAST ELEVATION
SCALE: 3/16" = 1'-0"



2 WEST ELEVATION
SCALE: 3/16" = 1'-0"



4 SOUTH ELEVATION
SCALE: 3/16" = 1'-0"



This drawing has been prepared by the Architect, or under the Architect's direct supervision. This drawing is provided as an instrument of service by the Designer / Architect and is intended for use on this project only. Any reproduction, use, or disclosure of information contained herein without the prior written consent of the Architect is strictly prohibited. (C) Copyright 2021 by Simonson & Associates Architects, L.L.C.

WAUKEE CROSSING

CLUBHOUSE

WAUKEE, IOWA

11/01/2021

24"x36" SHEET (FULL SIZE)
- SCALE IS AS NOTED
12"x18" SHEET (HALF SIZE)
- SCALE IS ONE-HALF OF WHAT IS NOTED
OTHER SHEET SIZES NOT TO SCALE
SAA JOB #: 21113



simonson & associates architects llc
1717 ingsoll avenue suite 117 des moines ia 50309
phn 515 440 5626 www.simonsonassoc.com