

**PRELIMINARY
 NOT TO BE USED
 FOR CONSTRUCTION**

PROPERTY OF FRK ARCHITECTS + ENGINEERS, P.C. THIS DOCUMENT AND THE INFORMATION CONTAINED HEREIN IS UNCLASSIFIED AND NOT BE REPRODUCED OR EXCERPTED FROM WITHOUT THE EXPRESS WRITTEN PERMISSION OF FRK ARCHITECTS + ENGINEERS, P.C. ANY UNAUTHORIZED COPYING OR DISCLOSURE OF CONSTRUCTION INFORMATION IS PROHIBITED BY THE COPYRIGHT LAW.

RENOVATION TO
BASEBALL/SOFTBALL STADIUM
 WAUKEE COMMUNITY SCHOOL DISTRICT
 WAUKEE, IOWA

PROJECT NO.:
1018D07

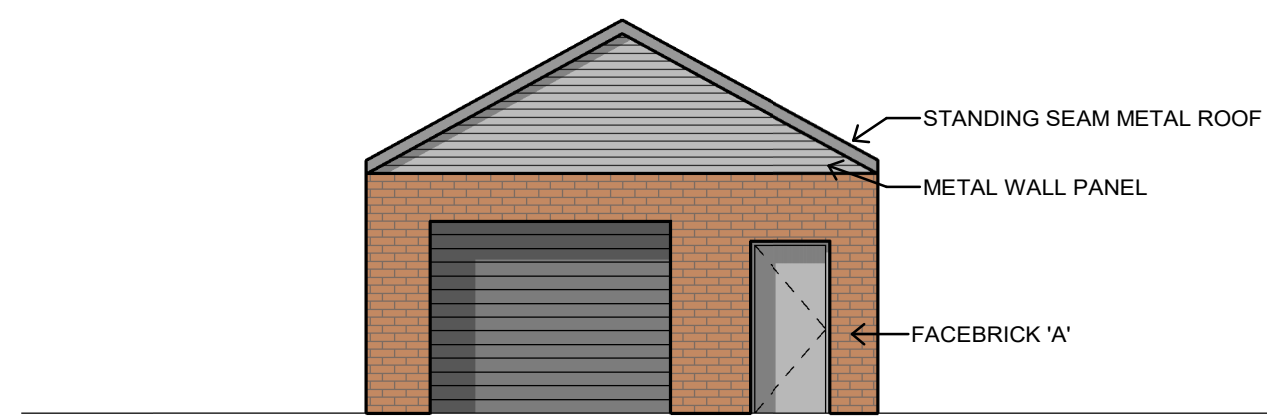
DATE:
FEBRUARY 2023

REVISIONS:

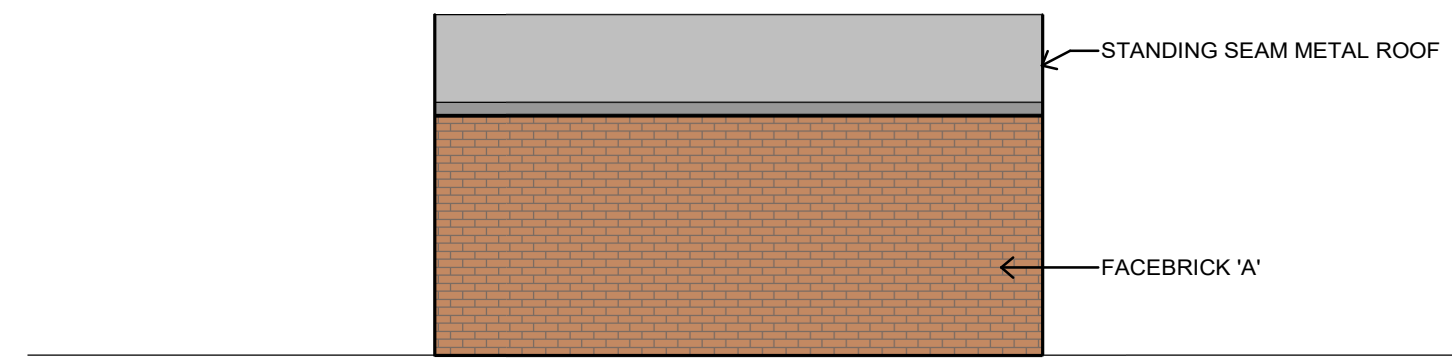
DRAWING TITLE:
COLORLED ELEVATIONS

DRAWING NO.:
A-202

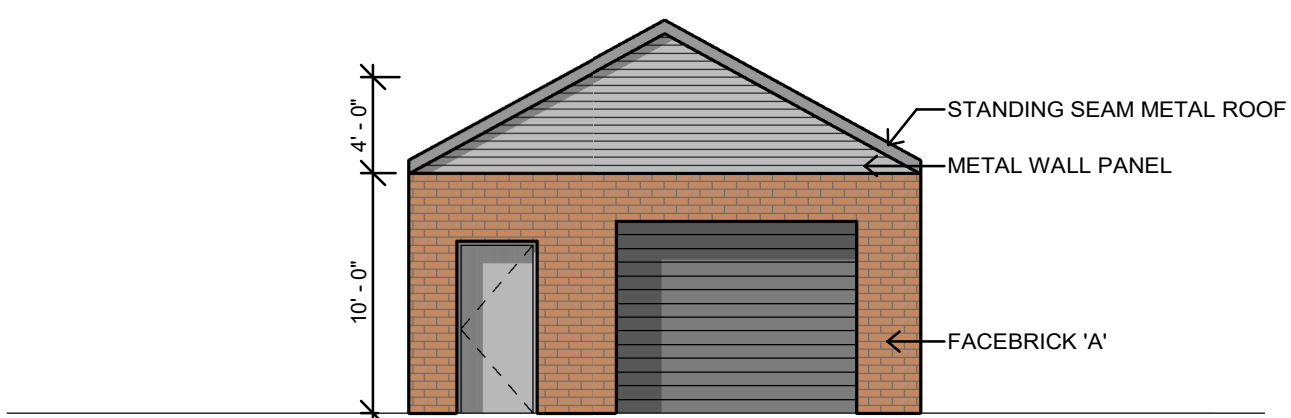
1/24/2023 3:24:34 PM



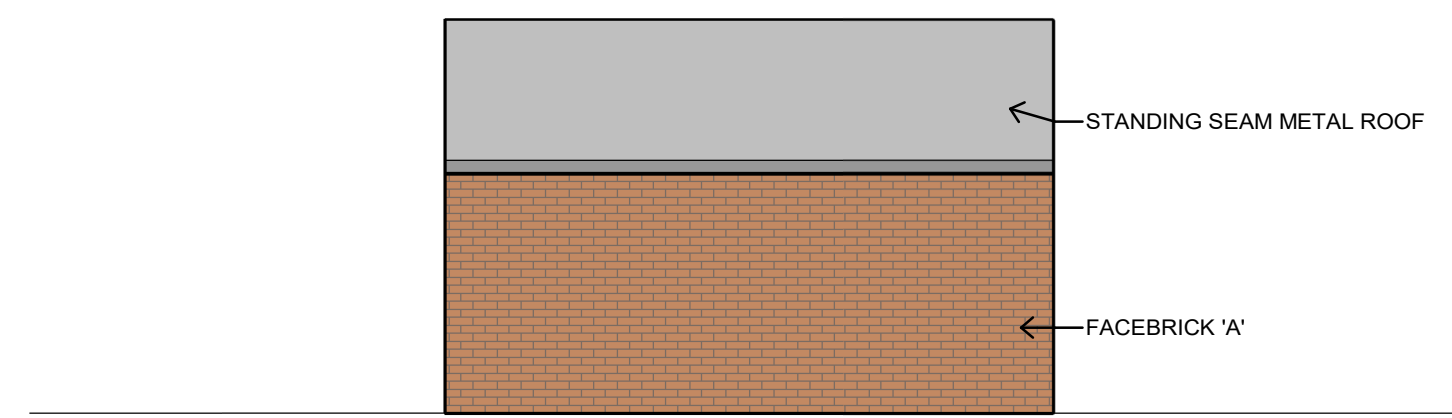
8 STORAGE WEST ELEVATION - ALT
 A-202 1/8" = 1'-0"



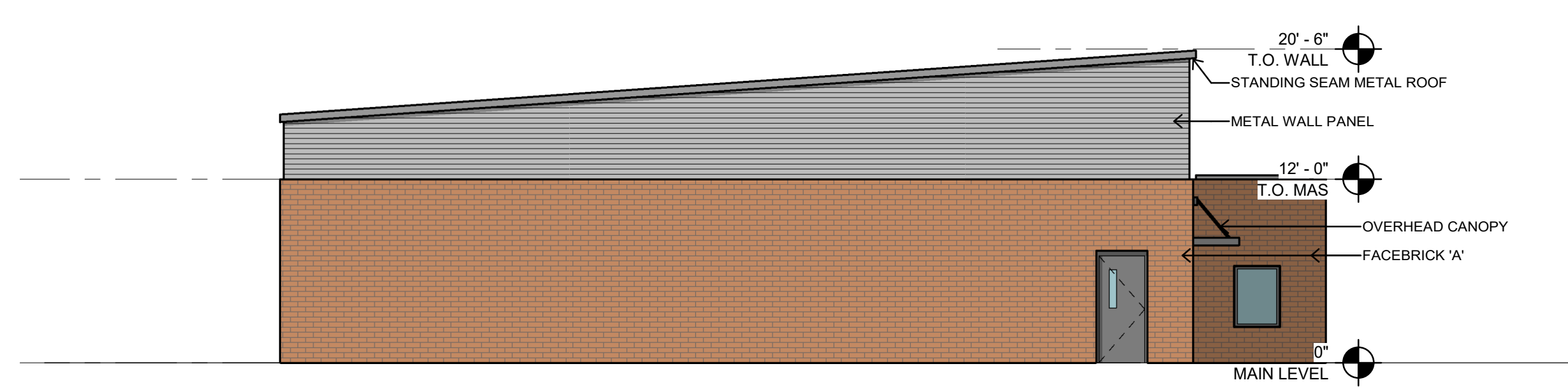
7 STORAGE SOUTH ELEVATION - ALT
 A-202 1/8" = 1'-0"



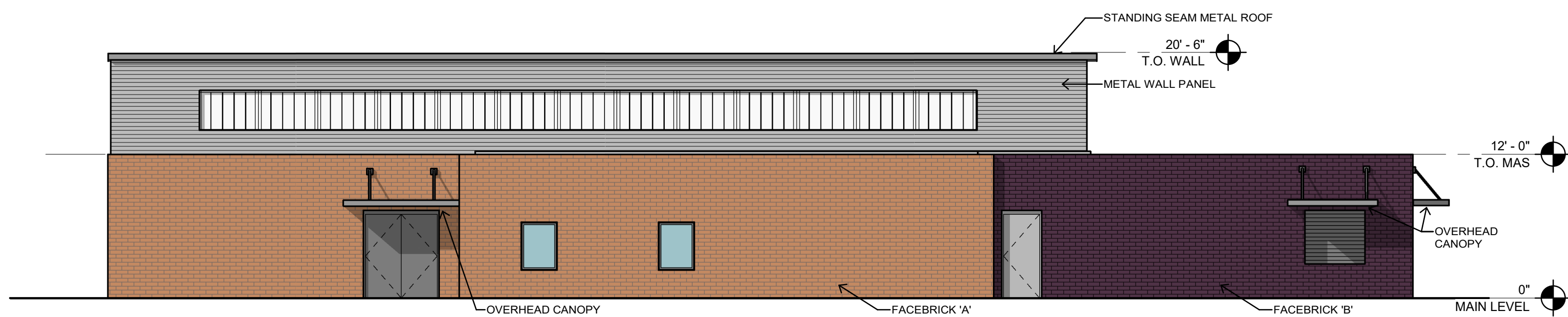
6 STORAGE EAST ELEVATION - ALT
 A-202 1/8" = 1'-0"



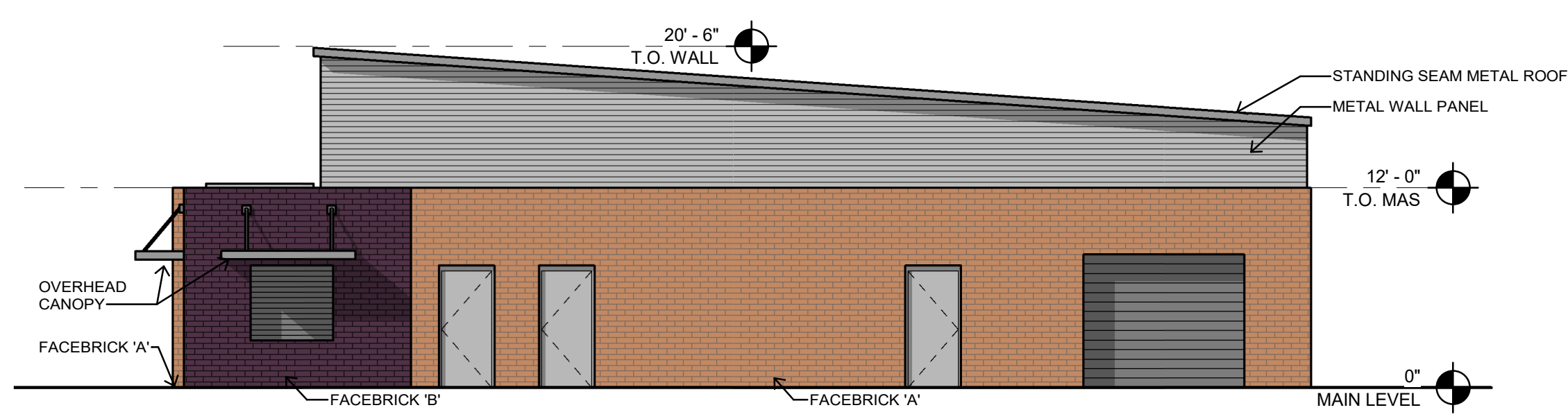
5 STORAGE NORTH ELEVATION - ALT
 A-202 1/8" = 1'-0"



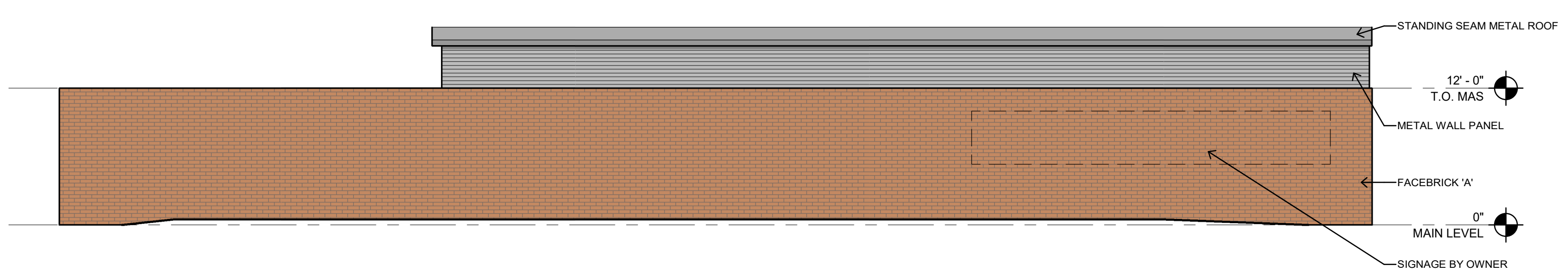
4 WEST ELEVATION
 A-202 1/8" = 1'-0"



3 SOUTH ELEVATION
 A-202 1/8" = 1'-0"



2 EAST ELEVATION
 A-202 1/8" = 1'-0"



1 NORTH ELEVATION
 A-202 1/8" = 1'-0"

MATERIAL BREAKDOWN OF BATTING FACILITY:
 66% BRICK
 23% METAL WALL PANEL
 5% WINDOWS
 6% DOORS (INCLUDING CONCESSIONS)