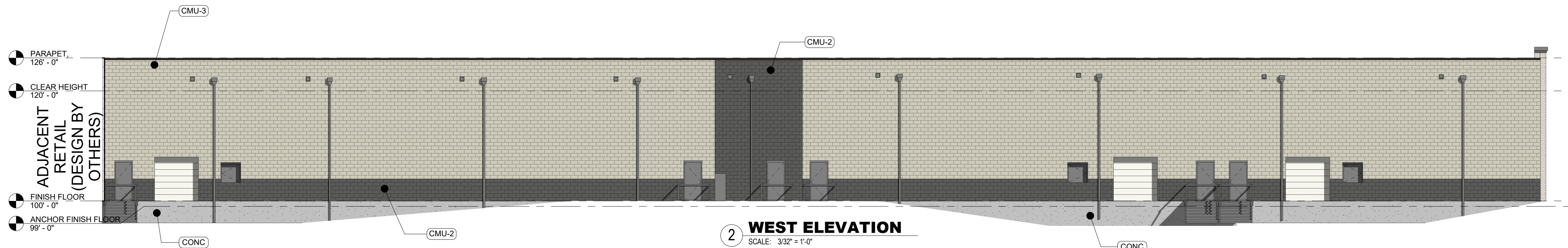
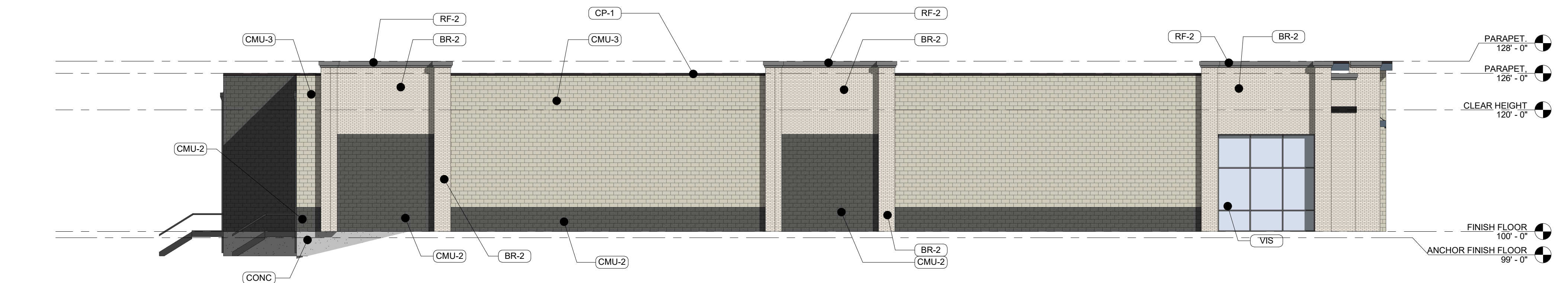


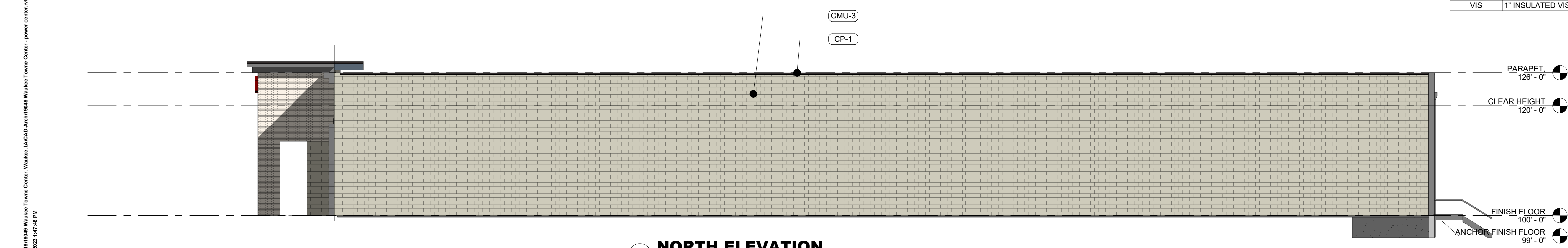
1 EAST ELEVATION
SCALE: 3/32" = 1'-0"



2 WEST ELEVATION
SCALE: 3/32" = 1'-0"



3 SOUTH ELEVATION
SCALE: 3/32" = 1'-0"



4 NORTH ELEVATION
SCALE: 3/32" = 1'-0"

GENERAL EXTERIOR ELEVATION NOTES

- REFER TO ADDITIONAL NOTES AND REQUIREMENTS ON ALL OTHER DOCUMENTS AND OTHER DISCIPLINES DOCUMENTS.
- ALL CONDUIT RUNS & SERVICE LINES SHALL BE GROUPED TOGETHER IN A NEAT & ORDERLY MANNER AND SHOULD PENETRATE THE WALL AT THE LOWEST POINT AND ARE NOT TO RUN OVER THE TOP OF PARAPET. ALL OTHER CONDUITS & JUNCTION BOXES FOR EXTERIOR FIXTURES & EQUIPMENT SHALL BE FULLY CONCEALED WITHIN THE BUILDING CONSTRUCTION.
- ALL HORIZONTAL TRANSITIONS BETWEEN DIFFERENT MATERIALS SHALL BE FLASHED CONTINUOUS FROM UP BEHIND UPPER MATERIAL AND EXTEND OVER TO EXTERIOR FACE OF LOWER MATERIAL WITH DRIP EDGE.
- ANY RETURNS OR BLIND ELEVATIONS NOT SHOWN SHALL BE SIMILAR IN MATERIAL AND MAKEUP TO ADJACENT CONDITIONS OR OTHER SIMILAR CONDITIONS.
- NO EXPOSED MASONRY/MATERIAL CORES. MASONRY RETURNS AT WINDOWS/OPENINGS ARE REQUIRED IF FRAMING IS NOT DEEP ENOUGH TO PROVIDE CLOSURE AT THE BACKSIDE OF MASONRY FOR AN EFFECTIVELY SEALED JOINT.
- MATERIALS ABOVE CANOPIES & AWNINGS TO BE CONTINUED DOWN BEHIND THEM U.O.N. TYP.
- ANY EXPOSED ROOFING MEMBRANE VISIBLE FROM A PUBLIC RIGHT AWAY MUST MATCH THE PRIMARY WALL MATERIAL COLOR.
- INSTALL VERTICAL EXPANSION JOINTS PER STRUCTURAL OR MINIMAL AT COLUMN/GRID LINES AND AT THE HEAD OF DOOR JAMBS/OPENINGS OR AS OTHERWISE NOTED OR WHERE REQUIRED PER STANDARD MATERIAL PRACTICE TO REDUCE STRESS CRACKING. NO CONTROL JOINT/EXPANSION JOINT AT MAIN STRUCTURAL BEARING LOCATIONS. VERIFY JOINTS WITH ARCHITECT.
- CAULK & SEAL ALL TRANSITION-CONTROL-EXPANSION AT ALL EXTERIOR MATERIALS.
- PROVIDE CAST REGLETS JUST IN FROM THE OUTER EDGE ON UNDERSIDE OF FACE MATERIAL OR DRIP EDGE AT ALL OVERHANGS & SOFFITS.
- INSULATE AND SEAL TO ENSURE ADEQUATE AIR INFILTRATION BARRIER AROUND ALL EXTERIOR PENETRATIONS TO PREVENT WATER AND SPRINKLER PIPE FREEZING.
- WHERE EXTERIOR PAVING ADJACENT TO BUILDING, TOP OF PAVING TO BE 1/4" LOWER THAN INTERIOR FINISH FLOOR, SLOPING CONTINUOUSLY AWAY FROM BUILDING A MINIMUM OF 5'. WHERE DOOR STOOP, 48" OUT FROM DOOR 1:48(2%) MAX. SLOPE, AFTER 48" AWAY FROM DOOR 1:20(5%) MAXIMUM SLOPE TO PUBLIC WAY. (REFER TO CIVIL)
- WHERE NO EXTERIOR PAVING ADJACENT TO BUILDING, TOP OF FINISHED LANDSCAPE A MINIMUM OF 4" BELOW INTERIOR FINISH FLOOR AND 4" BELOW EXTERIOR WALL FLASHING/WEEPS, SLOPING CONTINUOUSLY AWAY FROM BUILDING A MINIMUM OF 5'. (REFER TO CIVIL)
- ADDRESS SHALL BE PROVIDED ON STREET SIDE OF BUILDING AND ON MONUMENT SIGN. NUMBERS A MINIMUM 5 INCH CONTRASTING COLOR NUMBERS WITH MINIMUM 1/2" STROKE.
- IF ANY SIGNAGE OR SIGN BASE IS SHOWN IT IS FOR REFERENCE ONLY. FINAL DESIGNS AND/OR ALLOWANCES SHALL BE DETERMINED WITH APPROVED SIGNAGE PERMIT(S).

MISC EXTERIOR MATERIAL FINISHES

- TYPICAL U.O.N.
- EXPOSED CONCRETE: GRIND SMOOTH & RUB/COAT WITH CEMENT SLURRY.
 - BOLLARDS: CONCRETE FILLED STEEL BOLLARDS PAINTED SAFETY YELLOW.
 - EXPOSED LINTELS: GALVANIZED & PAINTED TO MATCH ADJACENT MATERIAL ABOVE.
 - METAL STAIRS & RAILINGS: GALVANIZED & PAINTED.
 - FASCIA & SOFFIT: METAL PREFINISHED.
 - SCUPPERS, GUTTERS & DOWNSPOUTS: METAL PREFINISHED TO MATCH ADJ. MATERIAL.
 - CAULKS & SEALANTS: COLOR MATCHED TO ADJACENT MATERIAL.
 - HOLLOW METAL MAIN DOORS & FRAMES: PAINTED TO MATCH ADJACENT MATERIAL.
 - OVERHEAD PANEL DOORS: METAL PRE-FINISHED TO MATCH ADJACENT MATERIAL.
 - LOUVERS: METAL PRE-FINISHED TO MATCH ADJACENT MATERIAL COLOR.
 - LIGHT FIXTURES: METAL PRE-FINISHED HOUSINGS TO MATCH ADJ. OPENING FRAMING.
 - EXTERIOR UTILITY EQUIPMENT: IF ALLOWED, PAINTED TO MATCH ADJACENT MATERIAL.

EXTERIOR MATERIAL LEGEND

MAT. LABEL	MATERIAL DESCRIPTION
AWN-1	PREFINISHED HORIZONTAL METAL AWNING. FINISH: CHARCOAL GRAY.
BR-1	MODULAR SIZE BRICK, RUNNING BOND, FINISH: WHITE.
BR-2	MODULAR SIZE BRICK, RUNNING BOND, FINISH: TAN.
BR-4	MODULAR SIZE BRICK, RUNNING BOND, FINISH: BLACK.
CL-1	COMPOSITE METAL CLADDING, PANEL SIZE: 16"x32", FINISH: OFF-WHITE. MAC SIDING POLYMAC TITANIUM WHITE OR PRE-APPROVED ALTERNATE.
CL-2	COMPOSITE/METAL CLADDING, PANEL SIZE: FINISH: CHARCOAL GRAY. MAC SIDING POLYMAC DARK BROWN OR PRE-APPROVED ALTERNATE.
CMU-2	CONCRETE MASONRY UNIT, COURSE SIZE: TBD, RUNNING BOND, FINISH: BLACK.
CMU-3	CONCRETE MASONRY UNIT, COURSE SIZE: TBD, RUNNING BOND, FINISH: LIGHT GRAY.
CONC	EXPOSED CONCRETE W/ SLURRY COATING
CP-1	METAL COPINGS: PREFINISHED BRASS METAL; FINISH: FIRESTONE CHARCOAL GRAY OR EQUAL.
MTL-1	PREFINISHED METAL TRIM. FINISH: BLACK.
RF-2	PREFINISHED METAL COPING AND FASCIA. FINISH: CHARCOAL GRAY
SF-1	T.B. ALUMINUM STOREFRONT FRAMING. FINISH: CLEAR ANODIZED.
SP-1	1" INSULATED OPAQUE SPANDREL GLASS. COLOR TO MATCH VIS1 GLASS
VIS	1" INSULATED VISION GLASS. CLEAR W/ LOW E COATING

EXTERIOR MATERIAL PERCENTAGES

TOTAL WALL SQUARE FOOTAGE:	
EAST WALL:	7,204 SF
DOORS/GLAZING:	1,236 SF (17%)
COMPOSITE CLADDING:	2,314 SF (32%)
MASONRY:	2,968 SF (41%)
MISC METAL/TRIM:	686 SF (10%)
SOUTH WALL:	4,464 SF
DOORS/GLAZING:	256 SF (6%)
COMPOSITE CLADDING:	176 SF (4%)
MASONRY:	4,011 SF (90%)
MISC METAL/TRIM:	21 SF (1%)
NORTH WALL:	5,172 SF
DOORS/GLAZING:	0 SF (0%)
COMPOSITE CLADDING:	0 SF (0%)
MASONRY:	5,172 SF (100%)
MISC METAL/TRIM:	0 SF (0%)
WEST WALL:	6,801 SF
DOORS/GLAZING:	378 SF (6%)
COMPOSITE CLADDING:	0 SF (0%)
MASONRY:	6,422 SF (94%)
MISC METAL/TRIM:	0 SF (0%)

Rev. #	Issue / Revision	Date
1	PRELIMINARY PRICING	08-28-2022
2	EXHIBIT	12-09-2022
3	REVISED EXTERIOR ELEVATIONS	01-04-2023
4	REVISED PRELIMINARY PRICING SET	02-15-2023
5	SITE PLAN/EXT. ELEV. SUBMITTAL	

Proj. No. SAA Proj. Mgr. **TKW**
19049
Sheet Title

EXTERIOR ELEVATIONS

Sheet No. **A-201**

NOT FOR CONSTRUCTION

F:\2019\19049 Waukee Towne Center, Waukee, IA\CADD\Arch\19049 Waukee Towne Center - power center.rvt
2/27/2023 1:42:48 PM