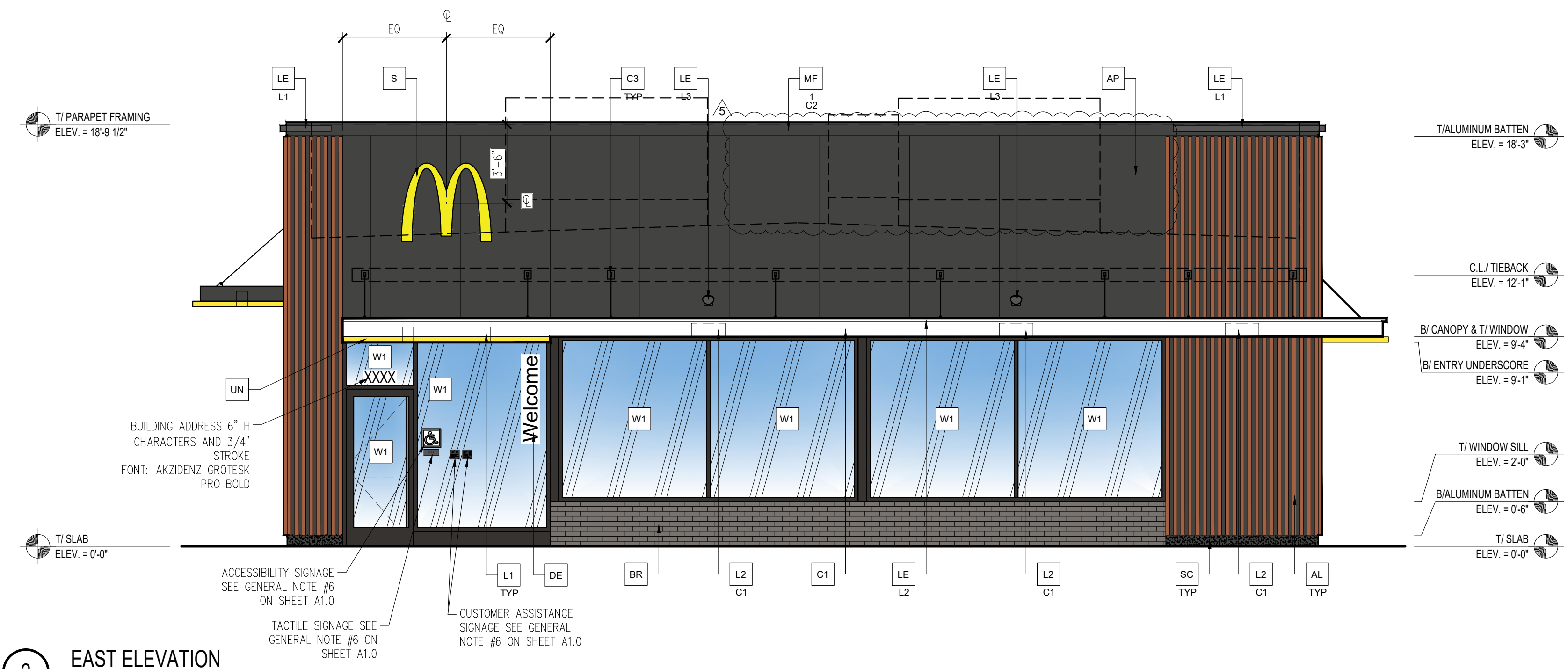


1 NORTH ELEVATION

Scale: 1/4"=1'-0"



2 EAST ELEVATION

Scale: 1/4"=1'-0"

NORTH ELEVATION MATERIAL PERCENTAGE BREAKDOWN:

METAL REVEAL PANEL	681 SF	37%
BRICK	581 SF	31%
FENESTRATION	270 SF	14%
VERTICAL BATTENS	93 SF	5%
PAINTED DELIVERY DOORS	88 SF	5%
ALPOLIC PANEL	71 SF	4%
METAL FACIA	63 SF	3%
STUCCO BASE	3 SF	1%
TOTAL	1,850 SF	100%

TOTAL ELEVATIONS MATERIAL PERCENTAGE BREAKDOWN:

BRICK	1,957 SF	37%
METAL REVEAL PANEL	1,568 SF	28%
FENESTRATION	628 SF	12%
ALPOLIC PANEL	534 SF	10%
VERTICAL BATTENS	449 SF	8%
METAL FACIA	186 SF	3%
PAINTED DELIVERY DOORS	112 SF	2%
STUCCO BASE	14 SF	0%
TOTAL	5,448 SF	100%

EAST ELEVATION MATERIAL PERCENTAGE BREAKDOWN:

ALPOLIC PANEL	327 SF	38%
FENESTRATION	287 SF	33%
VERTICAL BATTENS	170 SF	19%
BRICK	55 SF	6%
METAL FACIA	30 SF	3%
STUCCO BASE	5 SF	1%
TOTAL	874 SF	100%

GC TO PROVIDE SIGNAGE PACKAGE AND INSTALL SIGNS AT LOCATIONS AND POSITIONS INDICATED IN SIGNAGE PACKAGE OR AS REQUIRED BY LOCAL CODES. SIGNAGE PACKAGE SUPPLIED BY: FRANKE SUPPLY 1-800-423-5247, FAX: 1-877-538-6882, WWW.FRANKESUPPLY.COM, EMAIL: fs-frankesupplyus@franke.com

NOTE:
1. TRASH CORRAL INCLUDING DOORS, BOLLARDS ETC. TO MATCH MAIN BUILDING FINISHES AND COLORS.

RAL 7022 COLOR CHART (FOR REFERENCE)
(SEE ELEVATION KEY NOTES AP, C2, C3, MF-1-C2)
HEX CODE: #4C4A44
RGB CODE: RED 76 (30%), GREEN 74 (29%), BLUE 68 (27%)
CMYK CODE: CYAN 40%, MAGENTA 30%, YELLOW 40%, BLACK 80%

ELEVATION KEY NOTES:

<p>COLOR SCHEME: 'STEEL' SCHEME</p> <p>AL ALUMINUM BATTEN SYSTEM MFR: BHV INDUSTRIES SIZE: 2"x2" PROFILE COLOR: FORTINA, WOOD GRAIN, BACKRAIL UNFINISHED, ENDCAP PAINTED TO MATCH SUBSTRATE: 1/2" EXTERIOR HIGH DENSITY OVERLAY (HDO) PLYWOOD, BB, GROUP 1. HDO BOTH FACES, APAP TRADEMARKED, COURSE GRIT SAND SURFACES PRIOR TO PRIMING, PRIME AN DPAINT BOTH SIDES AND ALL EDGES. SUBSTRATE COLOR: "IRON ORE" SW 7069 BY SHERWIN WILLIAMS</p> <p>AP ALPOLIC METAL PANEL COLOR: RAL 7022</p> <p>BM BREAK METAL PANEL COLOR: GOLD PANTONE 123C</p> <p>BR BRICK VENEER BY HEBRON SLATE GRAY - SMOOTH MORTAR: SM750 SILVERSTONE BY SPEC MIX</p>	<p>C1 ALUMINUM CANOPY SYSTEM W/FASCIA COLOR: WHITE</p> <p>C2 ALUMINUM CANOPY SYSTEM COLOR: RAL 7022</p> <p>C3 ALUMINUM CANOPY TIEBACK COLOR: RAL 7022 GC TO PROVIDE CONTINUOUS BLOCKING ON WALL BEHIND TIEBACKS, WHEN TIEBACKS ARE INSTALLED ON METAL PANELING. SEE DETAIL 3/A5.0</p> <p>CM 7" REVEAL METAL WALL PANEL SYSTEM BY METAL ERA COLOR: WEATHERED ZINC</p> <p>D HOLLOW METAL DOOR COLOR: RAL 7022 PAINT: GAUNTLET GRAY SW 7019 BY SHERWIN WILLIAMS</p> <p>DE DECAL BY GRAPHICS SUPPLIER SURFACE APPLIED, FIELD INSTALLED, PRE CUT, PRE SPACED. SUPPLIERS: VOMELA (865) 330-7337, om.bowen@vomela.com GFX INTERNATIONAL (847) 543-4600, mcdonaldsdecor@gfx.com</p>	<p>EJ EXPANSION JOINT, SEE DETAIL 7/A4.1</p> <p>FB FILL BOX ## - TYPE: CO2 = BULK CO2 BO = BULK OIL</p> <p>GR GUARD RAIL - SEE SITE PLAN AND DETAIL 5/A2.1 COLOR: "IRON ORE" SW 7069 BY SHERWIN WILLIAMS</p> <p>L1 RECESSED DOWN LIGHT FIXTURE - SEE ELECTRICAL COLOR: GOLD</p> <p>L2 RADIAL SCONCE LIGHT FIXTURE - SEE ELECTRICAL ## - COLOR: C1 = WHITE C2 = PLATINUM SILVER</p>	<p>LE LED ACCENT LIGHTING - SEE ELECTRICAL ## - TYPE: L1 = SLIM LED (DOWN ONLY) L2 = INTEGRAL CANOPY FIXTURE L3 = UP ONLY FLOOD FIXTURE</p> <p>MF METAL FASCIA ## - TYPE: 1 = PRE-FAB ANCHOR-TITE FASCIA 2 = BOTTOM TRIM AT METAL REVEAL PANEL 3 = VERTICAL TRIM AT METAL REVEAL PANEL CORNERS, CLOSURES COLOR: C1 = WEATHERED ZINC C2 = RAL 7022</p> <p>PB PIPE BOLLARD - PAINTED YELLOW</p> <p>PT (RMHC) COIN COLLECTOR. SEE DETAIL 4/A2.1 MODEL: AMP1 STD CALL 1-888-743-7435 TO ORDER</p> <p>RG CONTINUOUS RAIN GUTTER AT PLAYPLACE ROOF COLOR: WEATHERED ZINC</p>	<p>RO ROOF DRAIN OVERFLOW PIPE PAINT TO MATCH SURROUNDING MATERIAL</p> <p>S McDONALD'S SIGNAGE BY OTHERS - UNDER SEPARATE PERMIT WEATHERED ZINC RACEWAY WHERE OCCURS</p> <p>SC STUCCO PAINT: "IRON ORE" SW 7069 BY SHERWIN WILLIAMS</p> <p>ST CO2 STROBE/ALARM. SEE MECHANICAL DRAWINGS FOR SPECIFICATION.</p> <p>UN METAL UNDERSCORE COLOR: GOLD</p> <p>W1 EXTERIOR WINDOW ASSEMBLY - TEMPERED GLASS COLOR: DARK BRONZE</p> <p>W2 DRIVE-THRU WINDOW BY READY ACCESS MODEL: 600 SERIES, 36" SERVICE HEIGHT WITH TRANSOM, MANUAL OPEN; ELECTRONIC RELEASE COLOR: DEEP BRONZE SLIDE DIRECTION: RL = RIGHT TO LEFT LR = LEFT TO RIGHT</p>
--	---	---	---	---



ALL DRAWINGS AND WRITTEN MATERIAL CONTAINED HEREIN ARE THE PROPERTY OF THE LINGLE DESIGN GROUP, INC. THEY MAY NOT BE REVISED, COPIED, REPRODUCED OR DISCLOSED IN ANY MANNER WITHOUT WRITTEN AUTHORIZATION FROM THE ARCHITECT.



09/21/22

STATE ID:	140360	NATIONAL #:	39633
PROJECT #:	22-496	DATE:	09/21/22
DRAWN BY:	RP	CHECKED BY:	JK

- REVISIONS**
- 1. 10/10/22 - MCDONALD'S COMMENTS
 - 2. 11/15/22 - REV PER CIVIL COORDINATION
 - 3. 02/27/23 - CITY COMMENTS
 - 4. 03/21/23 - WRA COMMENTS
 - 5. 04/05/23 - OWNER COMMENTS

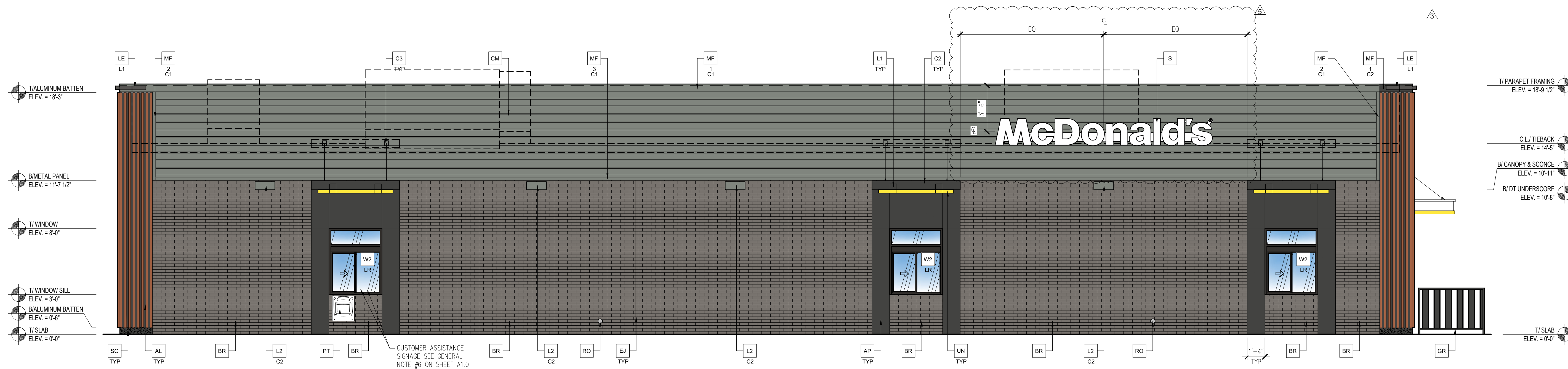
CLIENT

McDonald's USA, LLC

ADDRESS
2820 GRAND PRAIRIE PKWY
WAUKEE, IA 50263

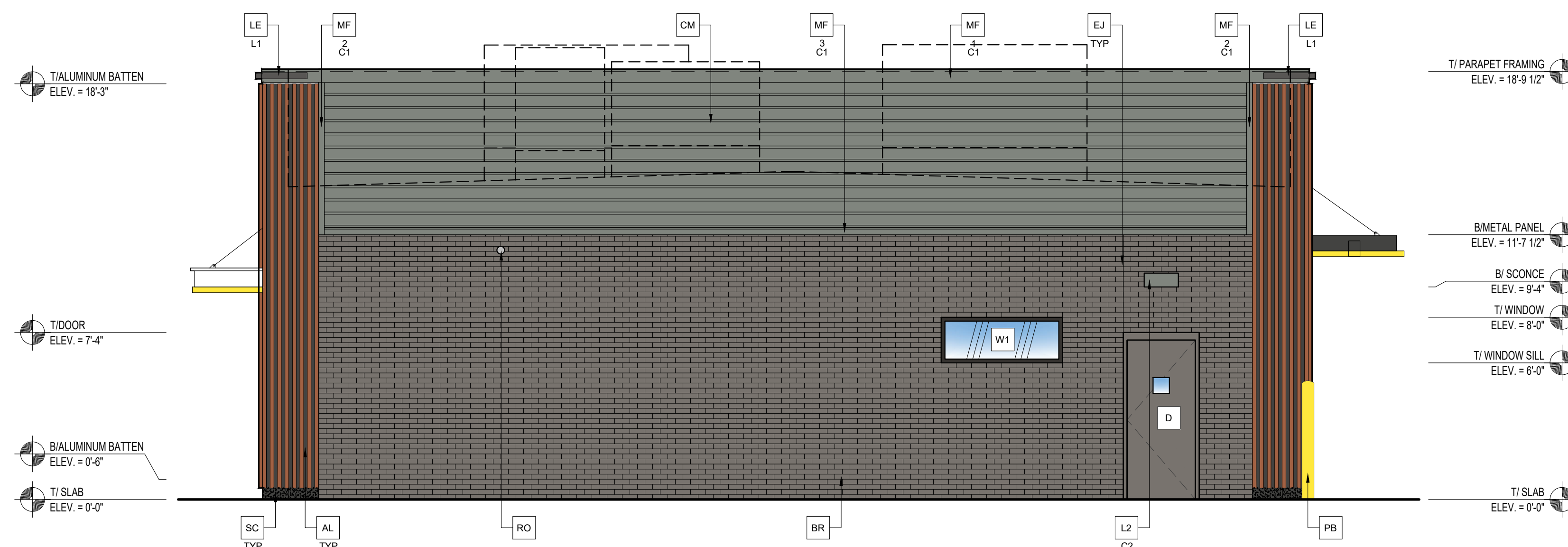
SHEET TITLE
EXTERIOR ELEVATIONS

SHEET NUMBER:
A2.0



1 SOUTH ELEVATION

Scale: 1/4"=1'-0"



2 WEST ELEVATION

Scale: 1/4"=1'-0"

SOUTH ELEVATION MATERIAL PERCENTAGE BREAKDOWN:

BRICK	880 SF	48%
METAL REVEAL PANEL	615 SF	33%
ALPOLIC PANEL	136 SF	7%
VERTICAL BATTENS	93 SF	5%
METAL FACIA	63 SF	3%
FENESTRATION	60 SF	3%
STUCCO BASE	3 SF	1%
TOTAL	1,850 SF	100%

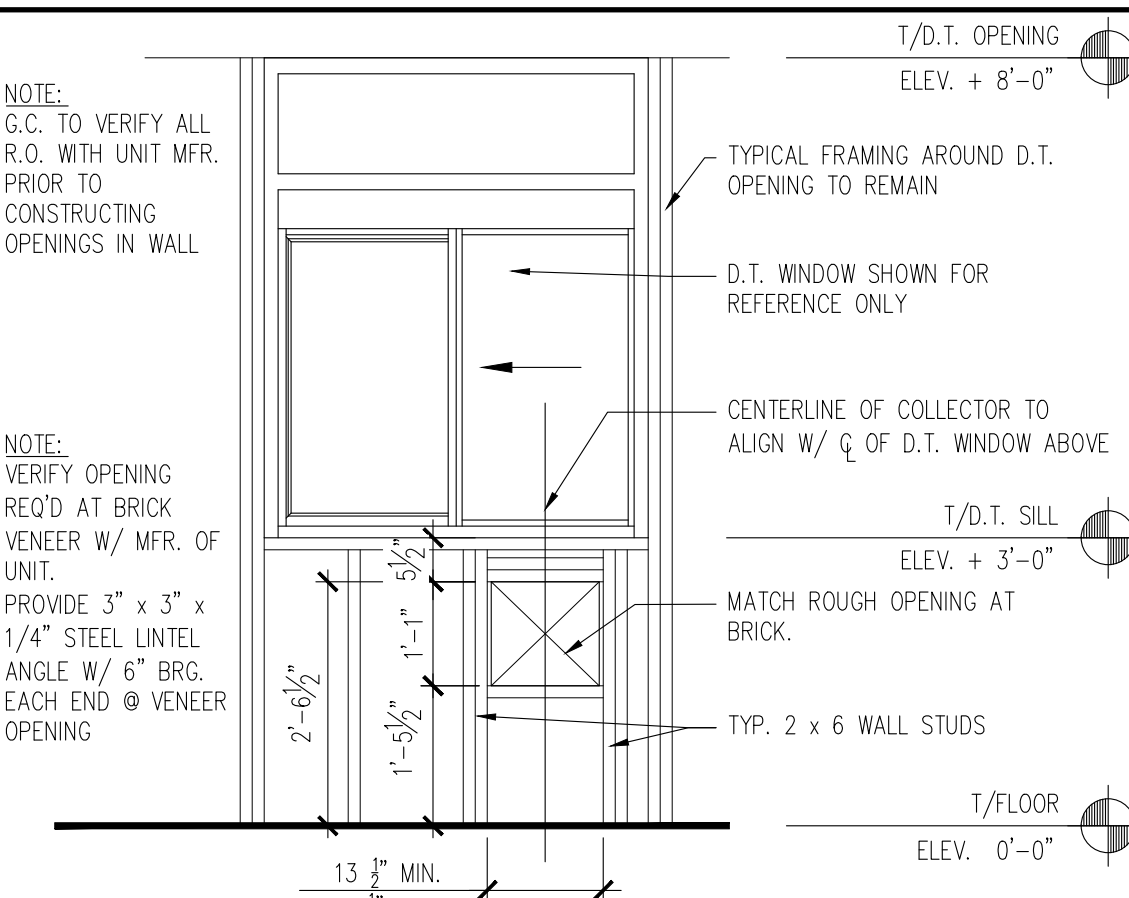
WEST ELEVATION MATERIAL PERCENTAGE BREAKDOWN:

BRICK	441 SF	50%
METAL REVEAL PANEL	272 SF	31%
VERTICAL BATTENS	93 SF	11%
METAL FACIA	30 SF	3%
PAINTED DELIVERY DOORS	24 SF	3%
FENESTRATION	11 SF	1%
STUCCO BASE	3 SF	1%
TOTAL	874 SF	100%

GC TO PROVIDE SIGNAGE PACKAGE AND INSTALL SIGNS AT LOCATIONS AND POSITIONS INDICATED IN SIGNAGE PACKAGE OR AS REQUIRED BY LOCAL CODES. SIGNAGE PACKAGE SUPPLIED BY: FRANKIE SUPPLY 1-800-423-5247, FAX: 1-877-538-6882, WWW.FRANKIESUPPLY.COM, EMAIL: fs-frankiesupplyus@franke.com

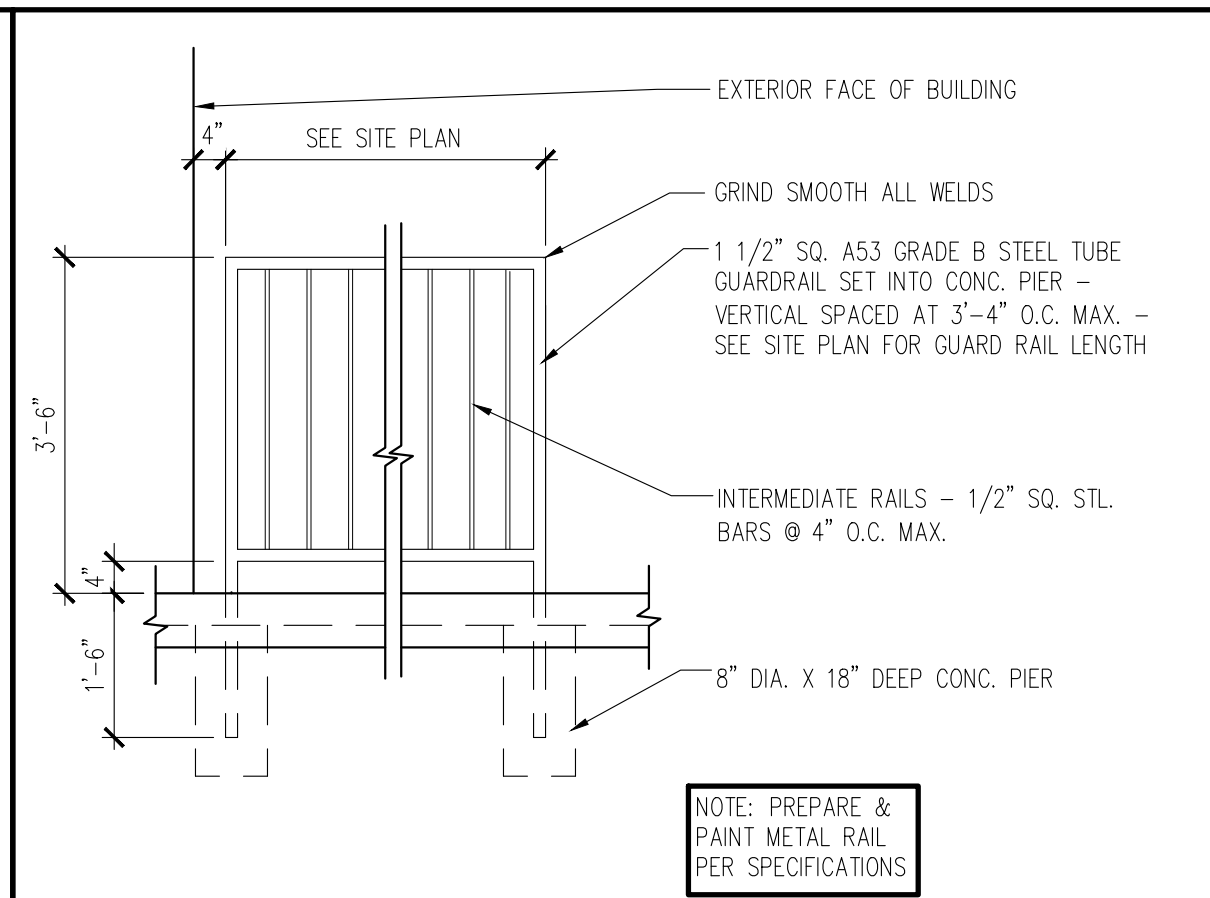
NOTE:
1. TRASH CORRAL INCLUDING DOORS, BOLLARDS ETC. TO MATCH MAIN BUILDING FINISHES AND COLORS.

RAL 7022 COLOR CHART (FOR REFERENCE)
(SEE ELEVATION KEY NOTES AP, C2, C3, MF-1-C2)
HEX CODE: #4C4A44
RGB CODE: RED 76 (30%), GREEN 74 (29%), BLUE 68 (27%)
CMYK CODE: CYAN 40%, MAGENTA 30%, YELLOW 40%, BLACK 80%



4 (RMHC) COIN COLLECTOR @ FRAMED WALL

1/2" = 1'-0"



5 GUARD RAIL DETAIL

1/2" = 1'-0"

ELEVATION KEY NOTES:

COLOR SCHEME: 'STEEL' SCHEME

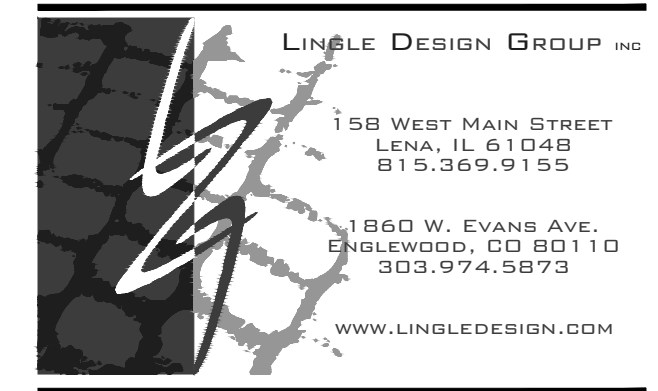
- AL ALUMINUM BATTEN SYSTEM MFR: B+V INDUSTRIES SIZE: 2"x2" PROFILE. COLOR: FORTINA, WOOD GRAIN, BACKRAIL UNFINISHED, ENDCAP PAINTED TO MATCH. SUBSTRATE: 1/2" EXTERIOR HIGH DENSITY OVERLAY (HDO) PLYWOOD, BB, GROUP 1. HDO BOTH FACES. APAP TRADEMARKED, COURSE GRIT SAND SURFACES PRIOR TO PRIMING. PRIME AN DPAINT BOTH SIDES AND ALL EDGES. SUBSTRATE COLOR: "IRON ORE" SW 7069 BY SHERWIN WILLIAMS
- AP ALPOLIC METAL PANEL COLOR: RAL 7022
- BM BREAK METAL PANEL COLOR: GOLD PANTONE 123C
- BR BRICK VENEER BY HEBRON SLATE GRAY - SMOOTH MORTAR: SM750 SILVERSTONE BY SPEC MIX

- C1 ALUMINUM CANOPY SYSTEM W/FASCIA COLOR: WHITE
- C2 ALUMINUM CANOPY SYSTEM COLOR: RAL 7022
- C3 ALUMINUM CANOPY TIEBACK GC TO PROVIDE CONTINUOUS BLOCKING ON WALL BEHIND TIEBACKS, WHEN TIEBACKS ARE INSTALLED ON METAL PANELING. SEE DETAIL 3/A5.0
- CM 7" REVEAL METAL WALL PANEL SYSTEM BY METAL ERA COLOR: WEATHERED ZINC
- D HOLLOW METAL DOOR PAINT: GAUNTLET GRAY SW 7019 BY SHERWIN WILLIAMS
- DE DECAL BY GRAPHICS SUPPLIER SURFACE APPLIED, FIELD INSTALLED, PRE CUT, PRE SPACED. SUPPLIERS: VOMELA (865) 330-7337, am.bowen@vomela.com GEX INTERNATIONAL (847) 543-4600, mcdonaldsdecor@ghl.com

- EJ EXPANSION JOINT, SEE DETAIL 7/A4.1
- FB FILL BOX ## - TYPE: CO2 = BULK CO2 BO = BULK OIL
- GR GUARD RAIL - SEE SITE PLAN AND DETAIL 5/A2.1 COLOR: "IRON ORE" SW 7069 BY SHERWIN WILLIAMS
- L1 RECESSED DOWN LIGHT FIXTURE - SEE ELECTRICAL COLOR: GOLD
- L2 RADIAL SCONCE LIGHT FIXTURE - SEE ELECTRICAL ## - COLOR: C1 = WHITE C2 = PLATINUM SILVER

- LE LED ACCENT LIGHTING - SEE ELECTRICAL ## - TYPE: L1 = SLIM LED (DOWN ONLY) L2 = INTEGRAL CANOPY FIXTURE L3 = UP ONLY FLOOD FIXTURE
- MF METAL FASCIA ## - TYPE: 1 = PRE-FAB ANCHOR-TITE FASCIA 2 = BOTTOM TRIM AT METAL REVEAL PANEL 3 = VERTICAL TRIM AT METAL REVEAL PANEL CORNERS, CLOSURES COLOR: C1 = WEATHERED ZINC C2 = RAL 7022
- PB PIPE BOLLARD - PAINTED YELLOW
- PT (RMHC) COIN COLLECTOR: SEE DETAIL 4/A2.1 MODEL: #MPT STD CALL 1-888-743-7435 TO ORDER
- RG CONTINUOUS RAIN GUTTER AT PLAYPLACE ROOF COLOR: WEATHERED ZINC

- RO ROOF DRAIN OVERFLOW PIPE PAINT TO MATCH SURROUNDING MATERIAL
- S McDONALD'S SIGNAGE BY OTHERS - UNDER SEPARATE PERMIT WEATHERED ZINC RACEWAY WHERE OCCURS L3 = UP ONLY FLOOD FIXTURE
- SC STUCCO PAINT: "IRON ORE" SW 7069 BY SHERWIN WILLIAMS
- ST CO2 STROBE/ALARM. SEE MECHANICAL DRAWINGS FOR SPECIFICATION.
- UN METAL UNDERSCORE COLOR: GOLD
- W1 EXTERIOR WINDOW ASSEMBLY - TEMPERED GLASS COLOR: DARK BRONZE
- W2 DRIVE-THRU WINDOW BY READY ACCESS MODEL: 600 SERIES, 36" SERVICE HEIGHT WITH TRANSOM, MANUAL OPEN; ELECTRONIC RELEASE COLOR: DEEP BRONZE SLIDE DIRECTION: RL = RIGHT TO LEFT LR = LEFT TO RIGHT



ALL DRAWINGS AND WRITTEN MATERIAL CONTAINED HEREIN ARE THE PROPERTY OF THE LINGLE DESIGN GROUP, INC. THEY MAY NOT BE REVISED, COPIED, REUSED OR DISCLOSED IN ANY MANNER WITHOUT WRITTEN AUTHORIZATION FROM THE ARCHITECT.



09/21/22

STATE ID:	140360	NATIONAL #:	39633
PROJECT #:	22-496	DATE:	09/21/22
DRAWN BY:	RP	CHECKED BY:	JK

REVISIONS

1	10/10/22 - MCDONALD'S COMMENTS
2	11/15/22 - REV PER CIVIL COORDINATION
3	02/27/23 - CITY COMMENTS
4	03/21/23 - WRA COMMENTS
5	04/05/23 - OWNER COMMENTS

CLIENT
McDonald's USA, LLC

ADDRESS
2820 GRAND PRAIRIE PKWY WAUKEE, IA 50263

SHEET TITLE
EXTERIOR ELEVATIONS

SHEET NUMBER:
A2.1