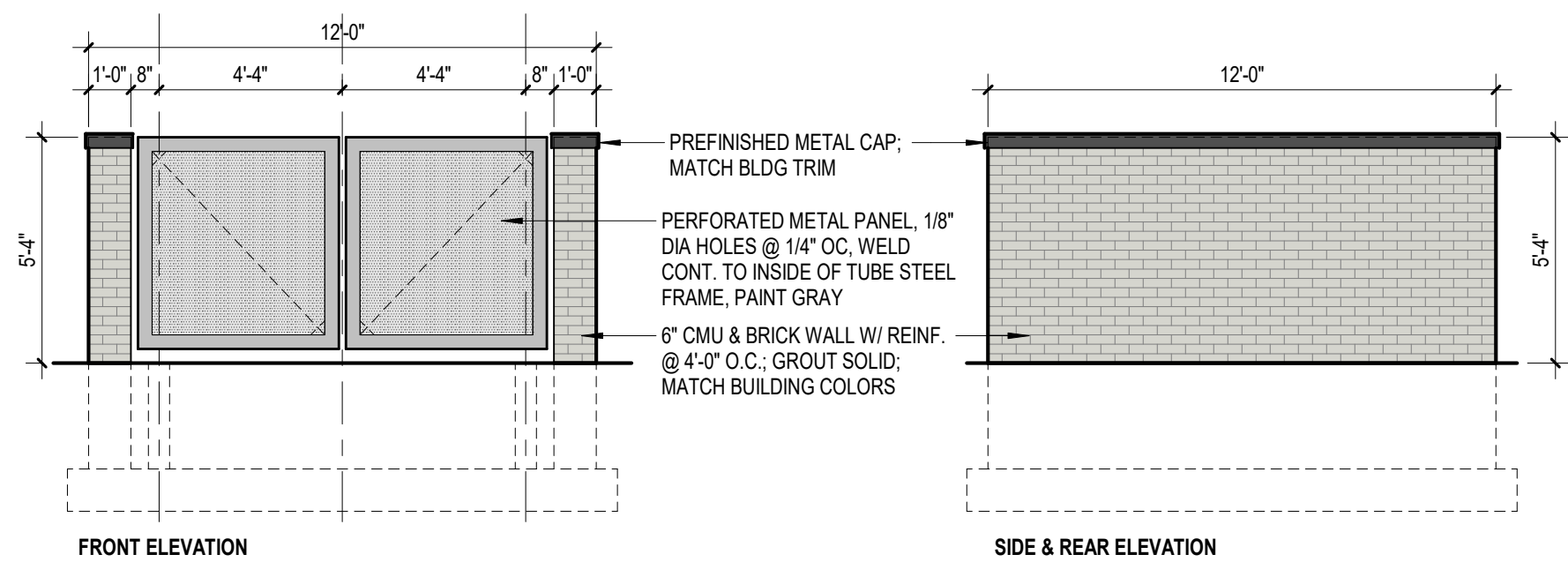
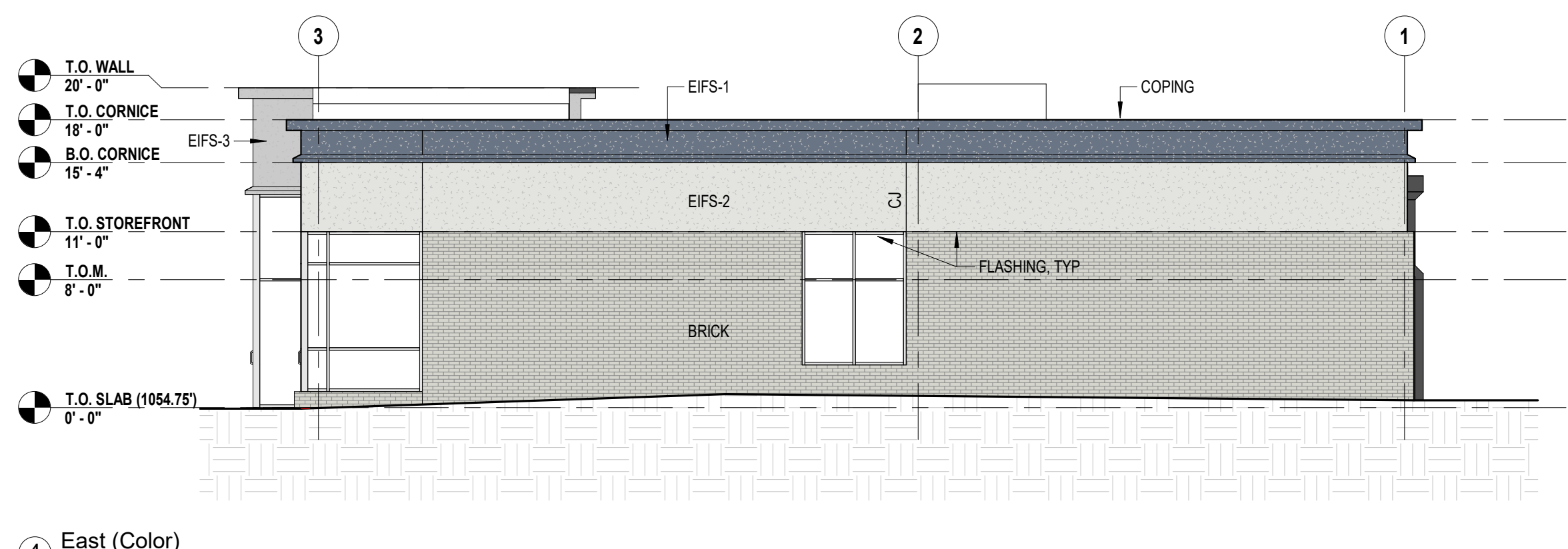


5 Section Site
1/16" = 1'-0"

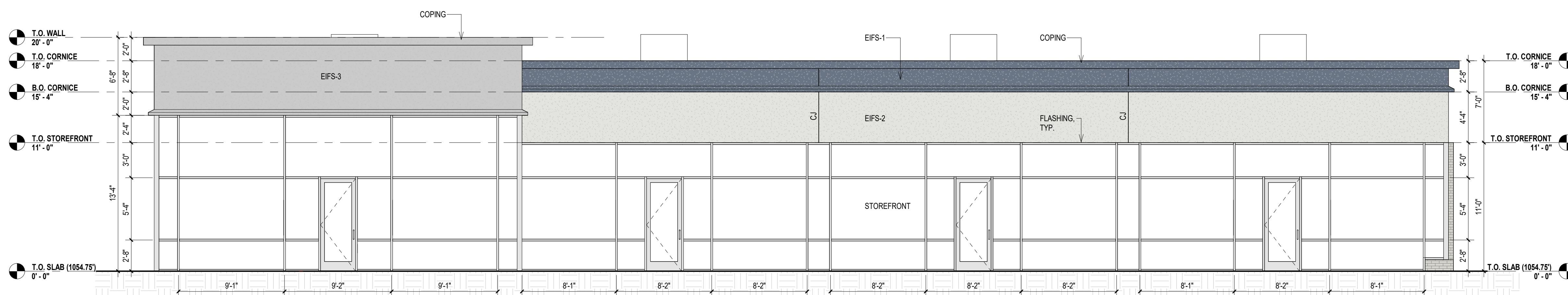


6 Trash Enclosure Elevations
1/4" = 1'-0"

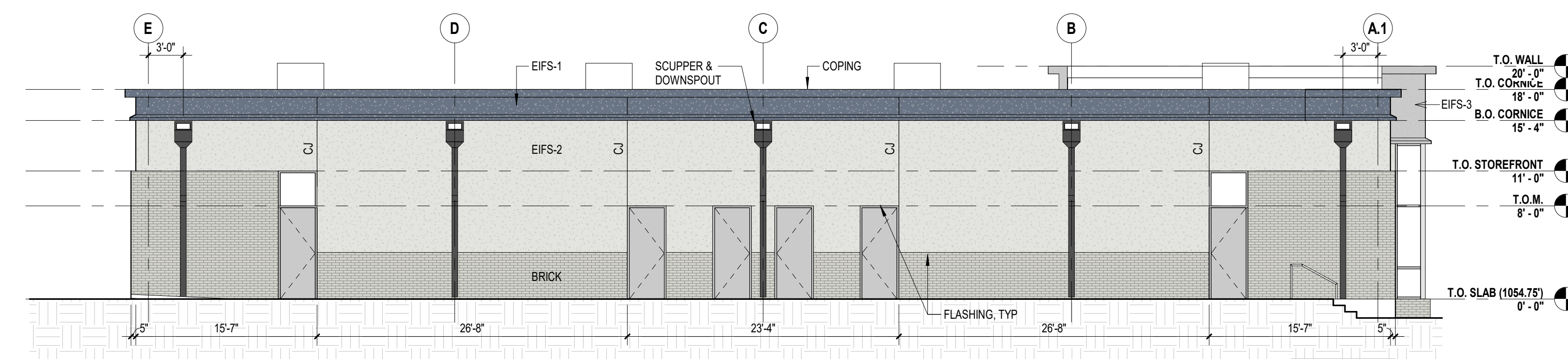
EXTERIOR MATERIALS	SOUTH		EAST		WEST		NORTH		TOTAL (ALL SIDES)			PRIMARY MATERIALS	SECONDARY MATERIALS
	AREA	%	AREA	%	AREA	%	AREA	%	AREA	%	TOTAL		
STOREFRONT/GLAZING	1293	63%	170	13%	345	25%	35	2%	1868	27.1%	52.7%		
BRICK	0	0%	636	48%	562	40%	544	27%	1588	25.6%			
EIFS	767	37%	672	39%	501	36%	1282	63%	3179	45.0%	47.3%		
PAINTED STEEL DOORS	0	0%	0	0%	0	0%	160	8%	160	2.3%			
TOTAL WALL AREA	2060	100%	1313	100%	1408	100%	2021	100%	6795	100%			



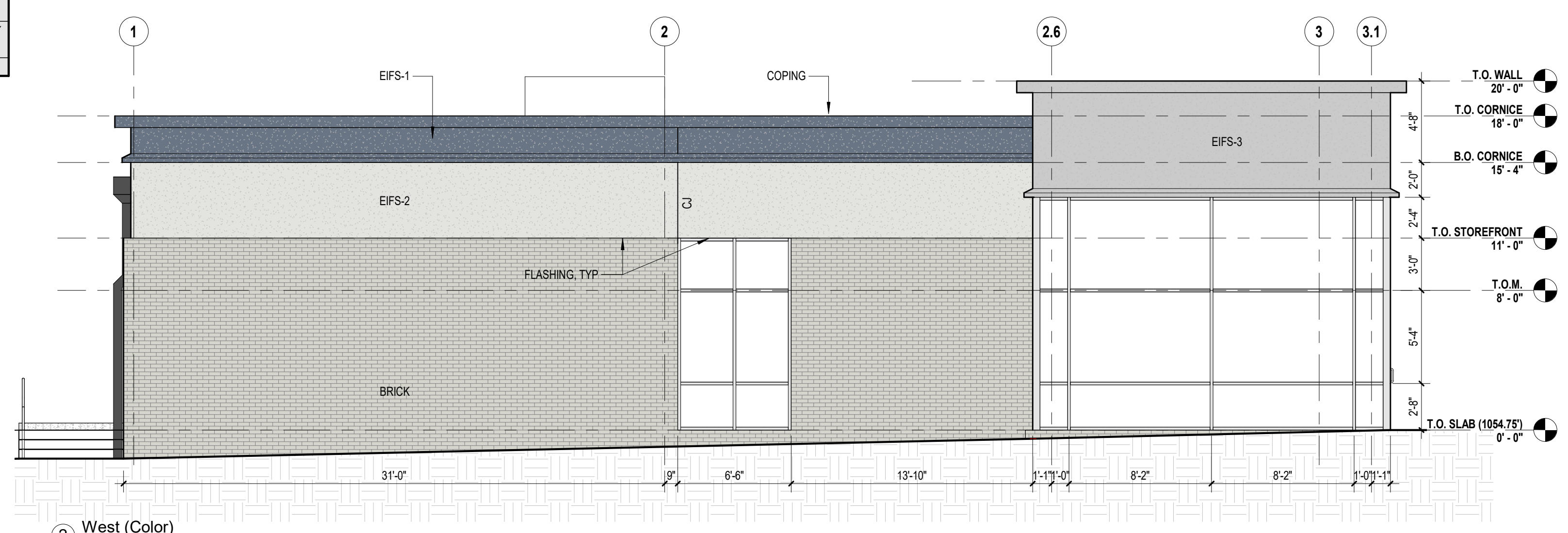
4 East (Color)
1/8" = 1'-0"



1 South (Color)
3/16" = 1'-0"



3 North (Color)
1/8" = 1'-0"



2 West (Color)
3/16" = 1'-0"

- EXTERIOR MATERIALS:**
- BRICK: ACME, MODULAR, MARBLE GRAY
 - EIFS-1: STO. SMOOTH TEXTURE, COLOR 35131, DARK BLUE
 - EIFS-2: STO. SAND TEXTURE, COLOR 37207, LIGHT BEIGE
 - EIFS-3: STO. SAND TEXTURE, COLOR 37306, LIGHT GRAY
 - STOREFRONT: EFCO, FRONT-SET, BLACK
 - STEEL DOOR PAINT: MATCH EIFS-2
 - COPING AND FLASHING: BLACK

CENTRAL PLAZA II
1165 SE UNIVERSITY AVE
WAUKEE, IOWA

THREE-SIXTY GROUP

Revisions	

ISSUE DATE: 0-0-21 PROJ. #: Project Number
Color Elevations

2023-04-20 -- FOR REVIEW