



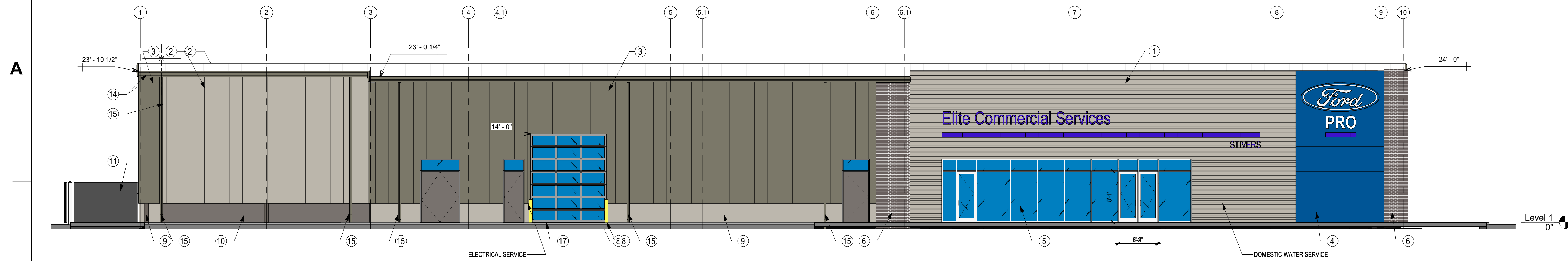
FORD PRO CENTER - STIVERS
WAUKEE, IOWA



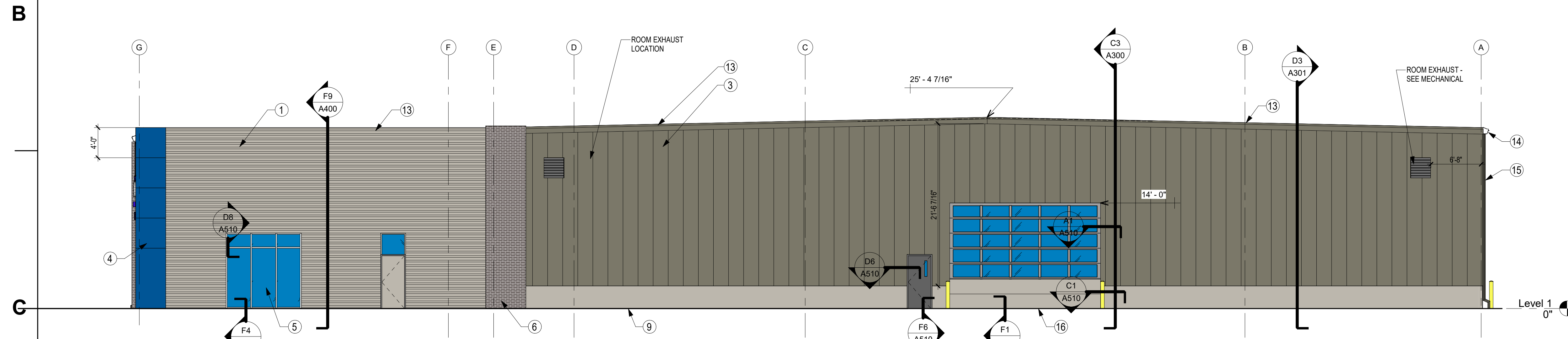


FORD PRO CENTER - STIVERS
WAUKEE, IOWA

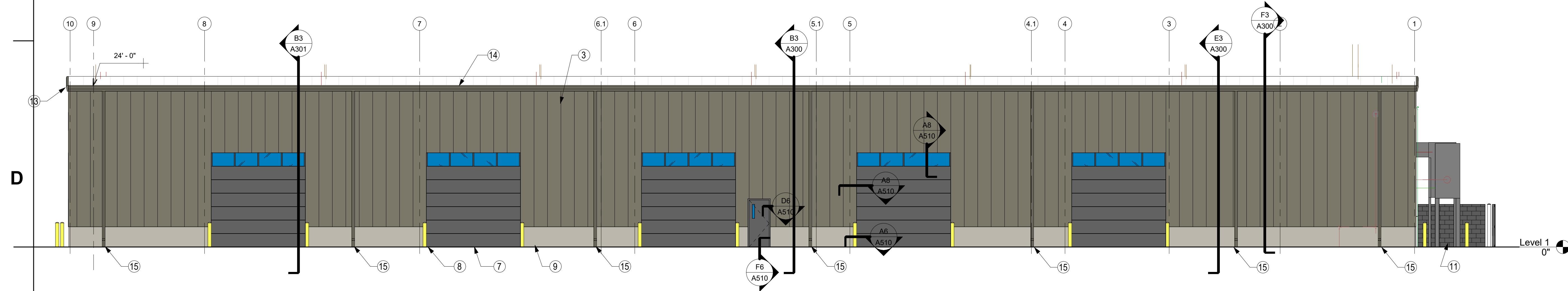




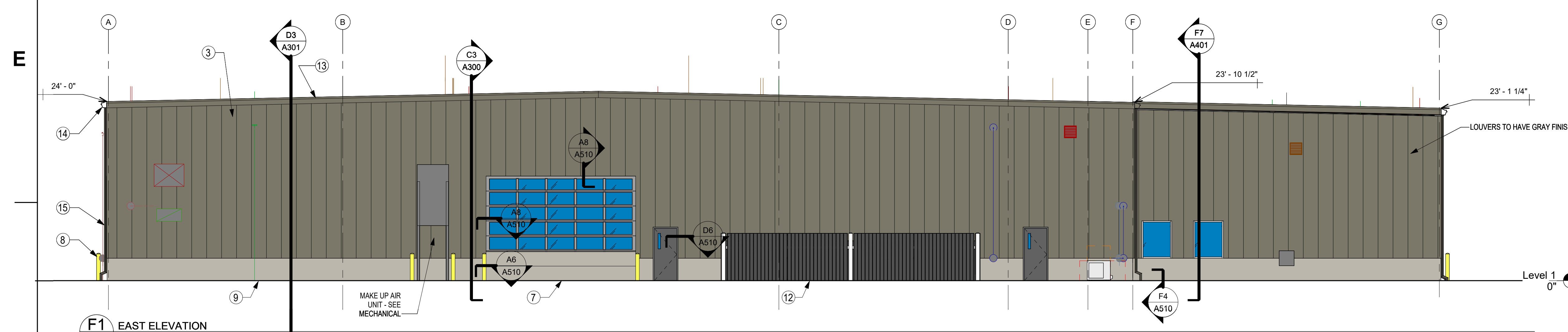
A1 NORTH ELEVATION
A200
1/8" = 1'-0"



C1 WEST ELEVATION
A200
1/8" = 1'-0"



D1 SOUTH ELEVATION
A200
1/8" = 1'-0"



F1 EAST ELEVATION
A200
1/8" = 1'-0"

ELEVATION KEYNOTES	
MARK	DESCRIPTION
1	HORIZONTAL CORRUGATED METAL PANEL, COLOR EQUIVALENT TO SHERWIN WILLIAMS SW7016 MINDFUL GREY; METL-SPAN 7 2 PANEL
2	3" THICK X 36" WIDE INSULATED METAL WALL PANEL W/ 1/2" REVEAL - EQUIVALENT TO SW7016 MINDFUL GRAY
3	3" THICK X 36" WIDE INSULATED METAL WALL PANEL W/ 1/2" REVEAL - SLATE GRAY; METAL SPAN SMOOTH FACED DW-4000 W/ KYNAR FINISH AND MAX U-VALUE OF 0.048
4	FORD BLUE ACM WALL
5	CLEAR ANODIZED THERMAL BREAK STOREFRONT WITH 1" LOW E INSULATED GLASS EQUAL TO KAWNEER 600 SERIES - U-VALUE OF GLAZING: 0.30 OR LOWER
6	MODULAR BRICK: INDULGENCE KLAYCOAT SERIES, STEEL GREY KLAYCOAT BY GLEN-GERY W/GLEN-GERY COLORED MORTAR
7	INSULATED HOLLOW METAL OVERHEAD DOOR W/ INSULATED GLASS TOP PANEL. INSULATED PANEL EQUIVALENT TO GAUNTLET GRAY SW 7019.
8	BOLLARD: 6" DIA GALV. STEEL BOLLARD, CONCRETE FILLED, PAINTED AND MOUNTED TO BUILDING FOOTING BELOW
9	2 5/16" CONCRETE INSULATED PANEL (WALLGUARD BY T-CLEAR OR EQUAL), SW7016 MINDFUL GRAY PAINT FINISH
10	2 5/16" CONCRETE INSULATED PANEL (WALLGUARD BY T-CLEAR OR EQUAL), SW7019 GAUNTLET GRAY PAINT FINISH
11	COLORLED SPLIT FACE CONCRETE BLOCK W/ COLORED MORTAR
12	DUMPSTER GATE: COMPOSITE WOOD VERTICAL SLATS - STAINED & SEALED - ON METAL FRAMING MOUNTED ON CONCRETE FILLED 6" GALVANIZED STEEL POST
13	RAKE FLASHING BY METAL BUILDING MFR.
14	PRE-FINISH ROOF GUTTER BY METAL BUILDING MFR.
15	PRE-FINISHED METAL DOWNSPOUT BY METAL BUILDING MFR. - CONNECTED TO SUBSURFACE DRAINAGE
16	INSULATED GLASS PANEL OVERHEAD DOOR W/ BOTTOM TWO PANELS TO BE INSULATED METAL TO MATCH "MINDFUL GRAY" SW 7016

FIELD BULLETINS ASSOCIATED WITH THIS SHEET:		
ISSUE #	ISSUE DATE	DESCRIPTION

ISSUE #	ISSUE DATE	DESCRIPTION	BUDGET SET (80% DD)
14	1/08/2023	BUDGET SET (80% DD)	

GENERAL CONTRACTOR - ARCHITECT
 NEUMANN BROTHERS, INC. - DESIGNBUILD SOLUTIONS
 1425 1st Ave. S.E., Des Moines, IA 50319
 Phone: (515) 283-0268 Fax: (515) 283-0185

STIVERS
FORD PRO CENTER
 1350 SE Stone Ridge Drive, Waukegan, Iowa 50263

EXTERIOR ELEVATIONS

A200

NOT FOR CONSTRUCTION