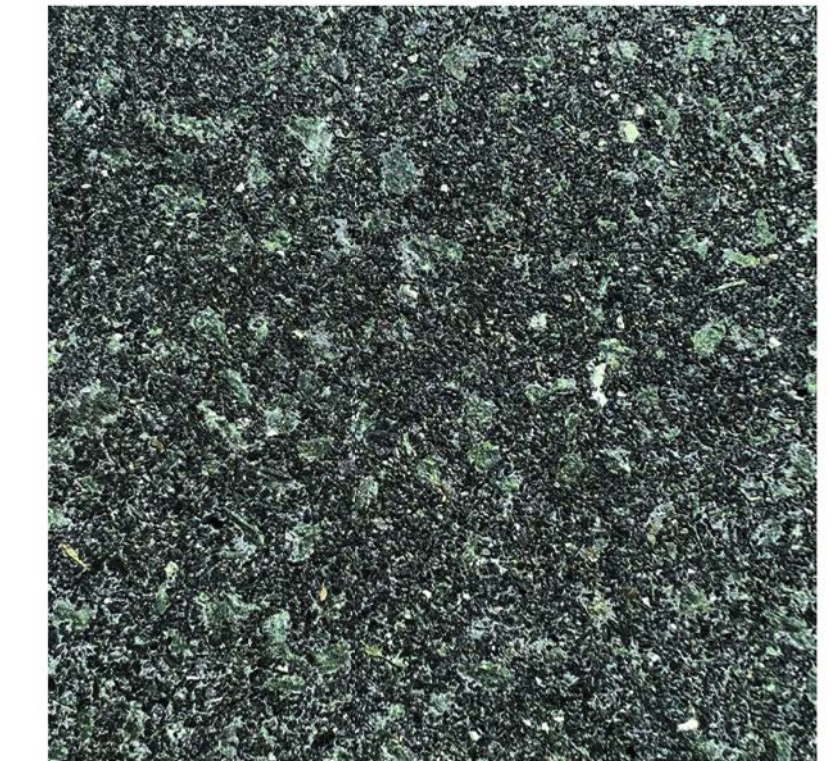


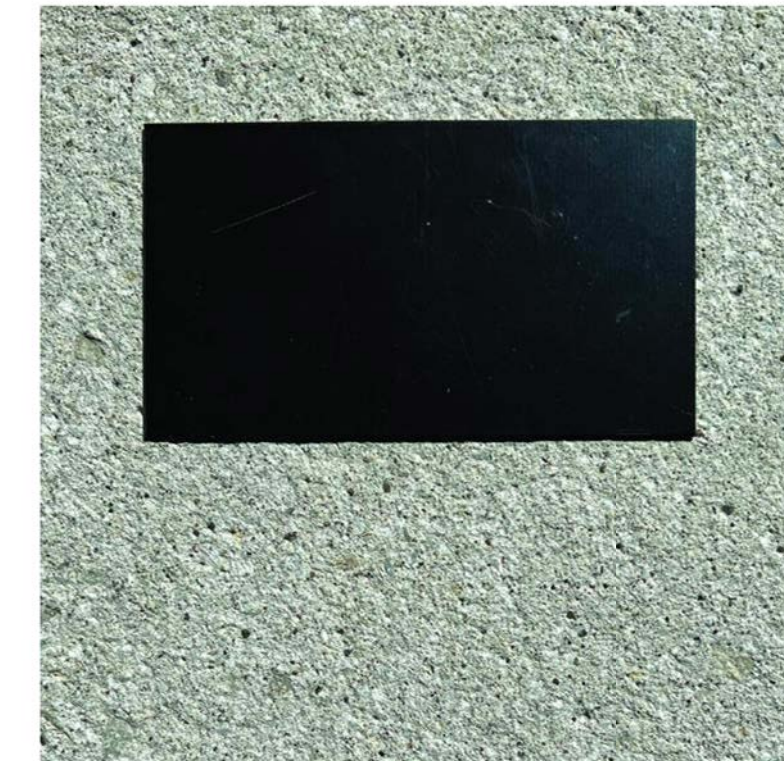
	West Elevation	East Elevation	South Elevation	North Elevation
Glass	4360 sf (45%)	2786 sf (29%)	1757 sf (19%)	1255 sf (14%)
Light Precast	3771 sf (39%)	5370 sf (55%)	6233 sf (66%)	4815 sf (54%)
Dark Precast	894 sf (9%)	894 sf (9%)	665 sf (7%)	2708 sf (29%)
Metal Panel/ Overhead Door	114 sf (1%)	114 sf (1%)	372 sf (4%)	160 sf (2%)
Wood Soffit	537 sf (6%)	539 sf (6%)	360 sf (4%)	52 sf (1%)
Total SF	9678 sf	9703 sf	9387 sf	8959 sf
Wood Screening	1875 sf	1875 sf	2341 sf	0 sf



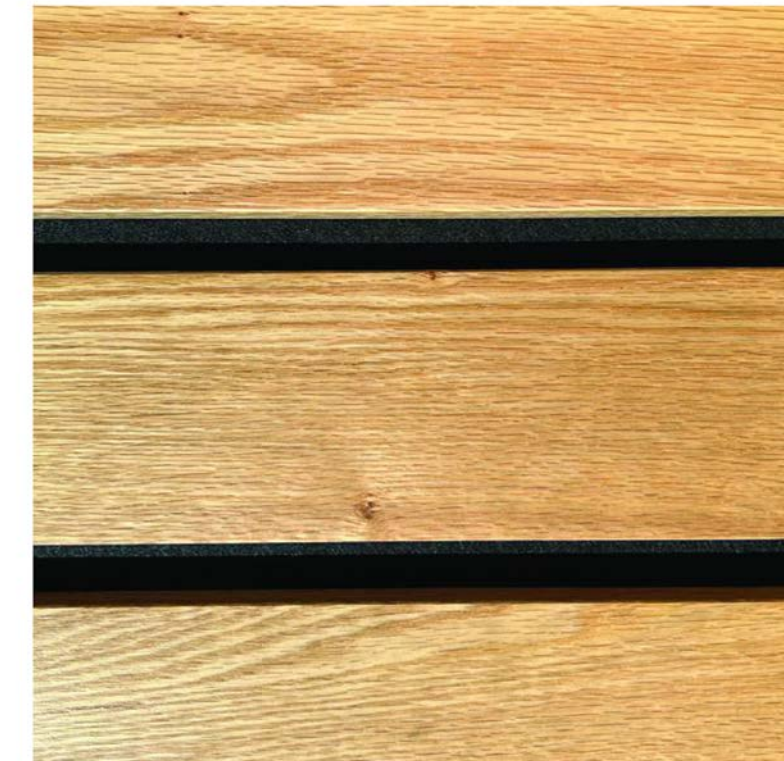
-INTEGRAL COLOR LIGHT PRECAST ACID ETCH FINISH



-INTEGRAL COLOR DARK PRECAST ACID ETCH FINISH



-METAL COPINGS AND FRAMES  
-INSULATED METAL PANELS  
-ALUMINUM STOREFRONT AND CURTAIN WALL  
-EQUIPMENT/GENERATOR SCREEN  
MIDNIGHT BRONZE FINISH



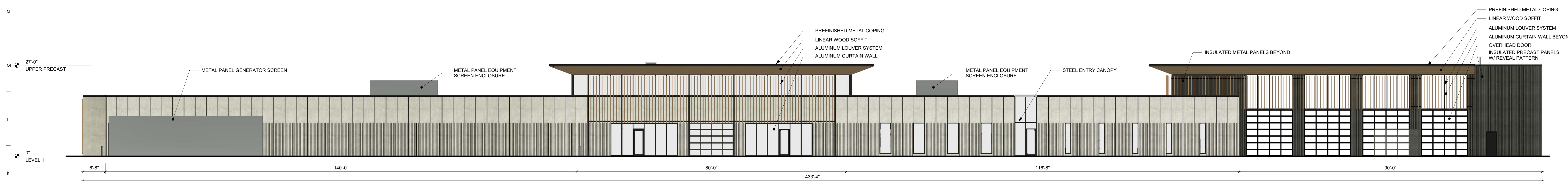
-LINEAR WOOD SOFFIT  
WHITE OAK



-WOOD-LOOK ALUMINUM LOUVER SYSTEM  
WHITE OAK FINISH



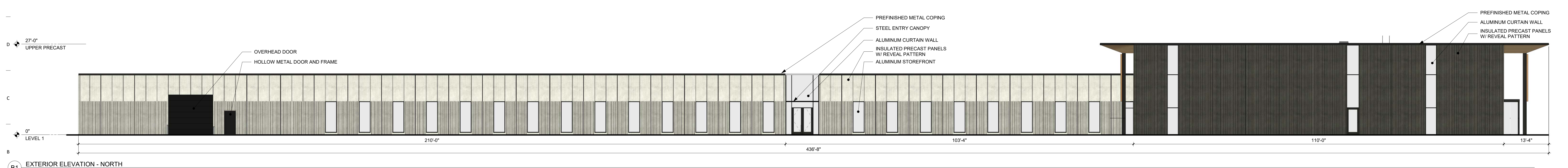
EXTERIOR ELEVATION - WEST  
3/32" = 1'-0"



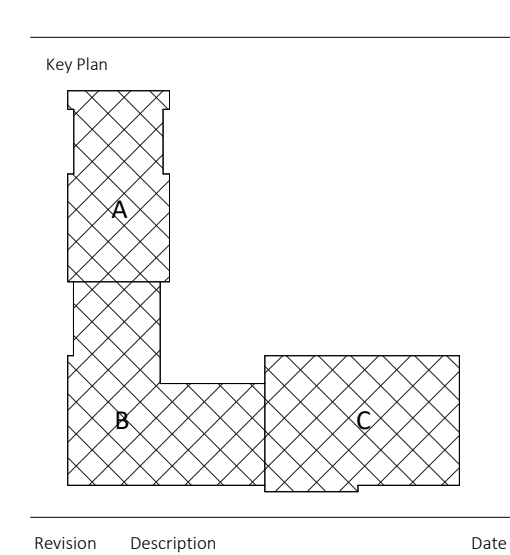
EXTERIOR ELEVATION - EAST  
3/32" = 1'-0"



EXTERIOR ELEVATION - SOUTH  
3/32" = 1'-0"



EXTERIOR ELEVATION - NORTH  
3/32" = 1'-0"



PRINTED: 7/20/2023 9:34:14 AM

PRINTED: 7/20/2023 9:34:56 AM



**OPN ARCHITECTS**  
 100 Court Ave., Suite 100  
 Des Moines, IA 50309  
 P: 515-309-0722  
 www.opnarchitects.com

All reports, plans, specifications, computer files, field data, notes and other documents are the property of OPN Architects, Inc. and shall remain the property of OPN Architects, Inc. All rights reserved. No part of this document may be reproduced or transmitted in any form or by any means, including the copyright owner's rights, without the prior written consent of OPN Architects, Inc.

© 2023 OPN Architects, Inc.

Owner  
**CITY OF WAUKEE**  
 230 W. HICKMAN ROAD  
 WAUKEE, IA 50263

Project  
**WAUKEE PUBLIC SAFETY BUILDING**  
 815 NW 20th STREET  
 WAUKEE, IA 50263

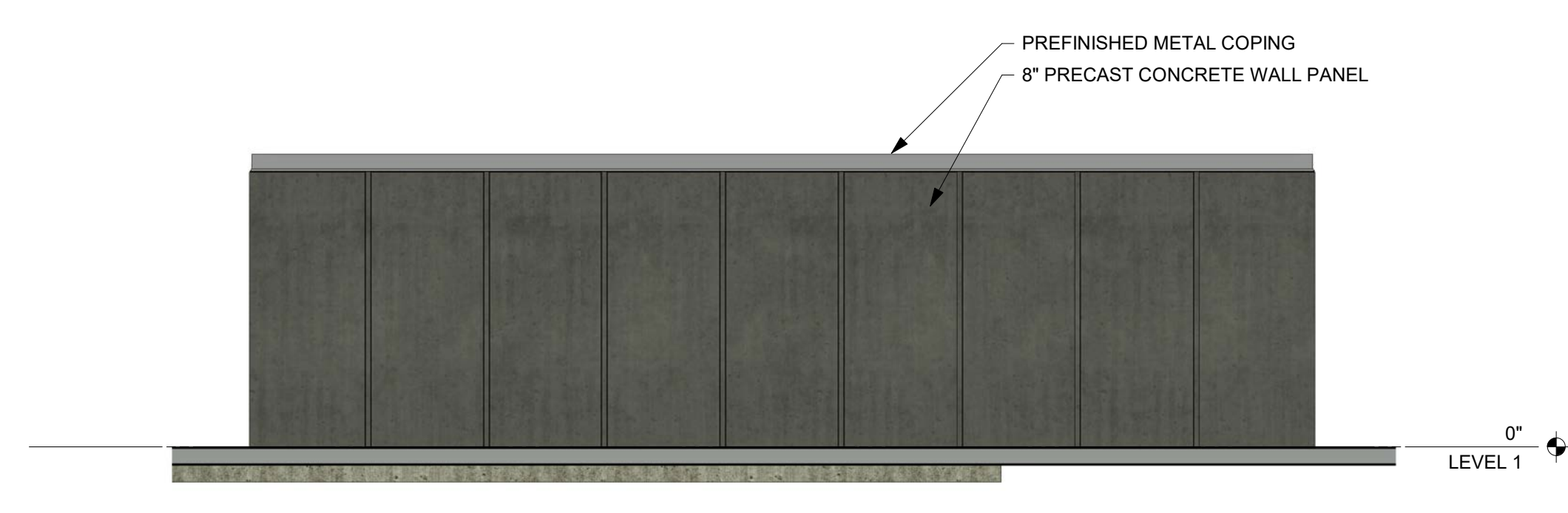
Construction Manager  
**RYAN COMPANIES**  
 111 E GRAND AVENUE, SUITE 200  
 DES MOINES, IA 50309  
 P. 515-309-8500

Civil Engineer  
**FDTH**  
 8191 BIRCHWOOD COURT, SUITE L  
 JOHNSTON, IA 50131  
 P. 515-254-1393

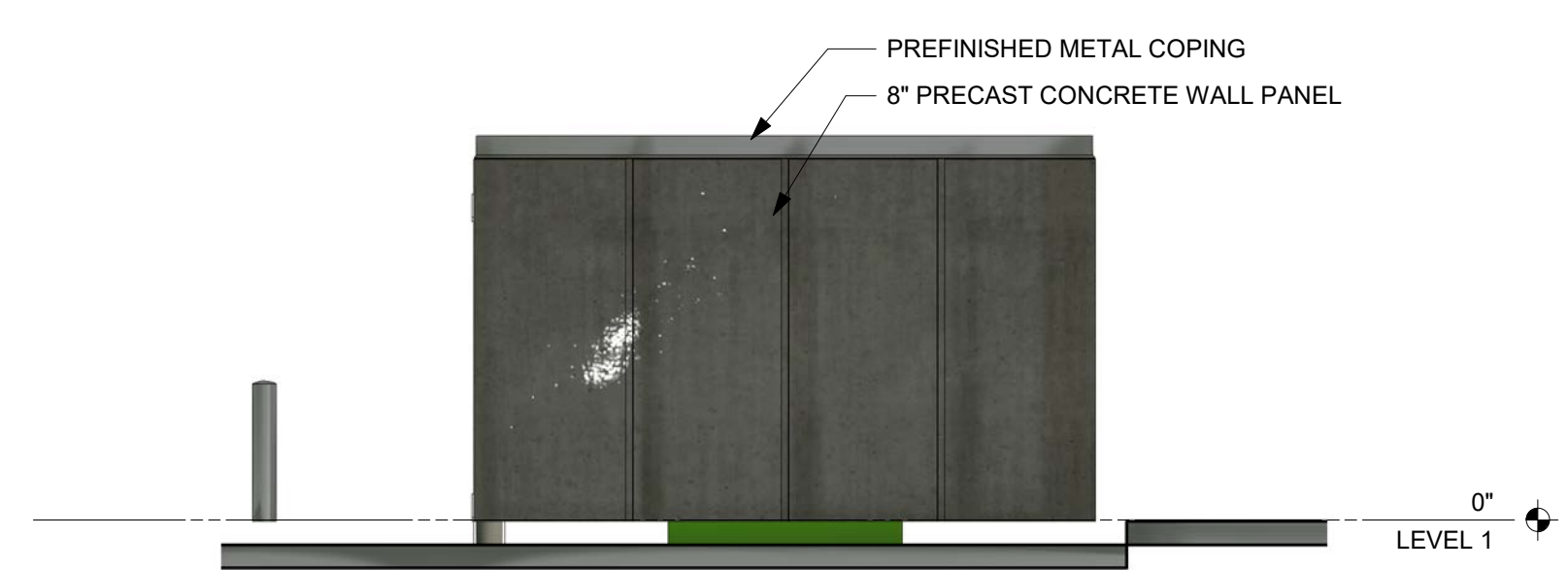
Landscape Architect  
**CONFLUENCE**  
 525 17TH STREET  
 DES MOINES, IA 50309  
 P. 515-288-4875

Structural Engineer  
**RAKER RHODES ENGINEERING**  
 4717 GRAND AVENUE  
 DES MOINES, IA 50313  
 P. 515-277-0275

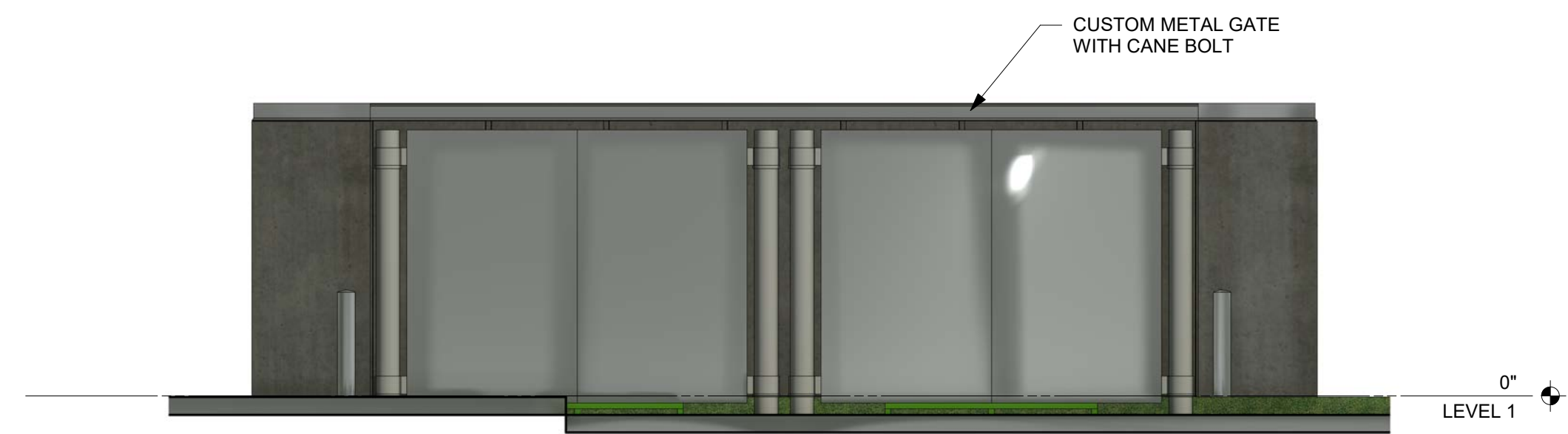
Architectural  
**MORRISSEY ENGINEERING**  
 4940 NORTH 118TH STREET  
 OMAHA, NE 68164  
 P. 402-491-4144



M10 ELEVATION - DUMPSTER ENCLOSURE - NORTH  
1/4" = 1'-0"



H2 ELEVATION - DUMPSTER ENCLOSURE - EAST COLORED  
1/4" = 1'-0"

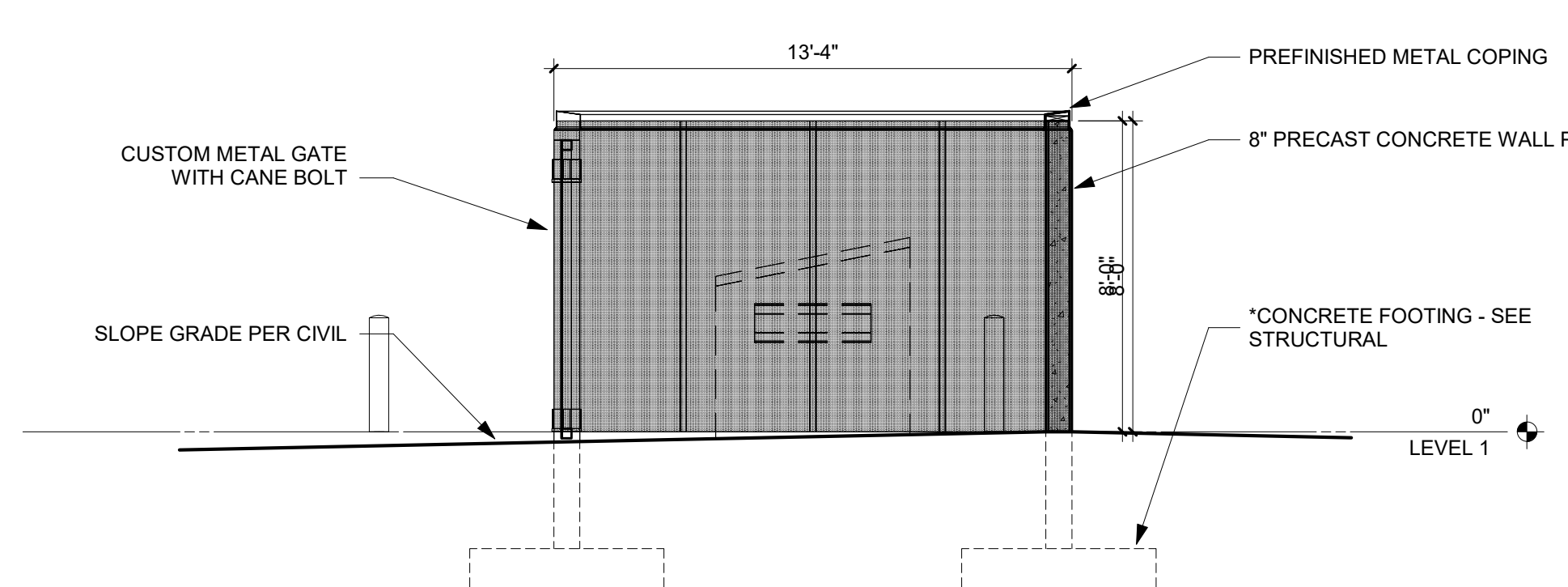


J10 ELEVATION - DUMPSTER ENCLOSURE - SOUTH  
1/4" = 1'-0"

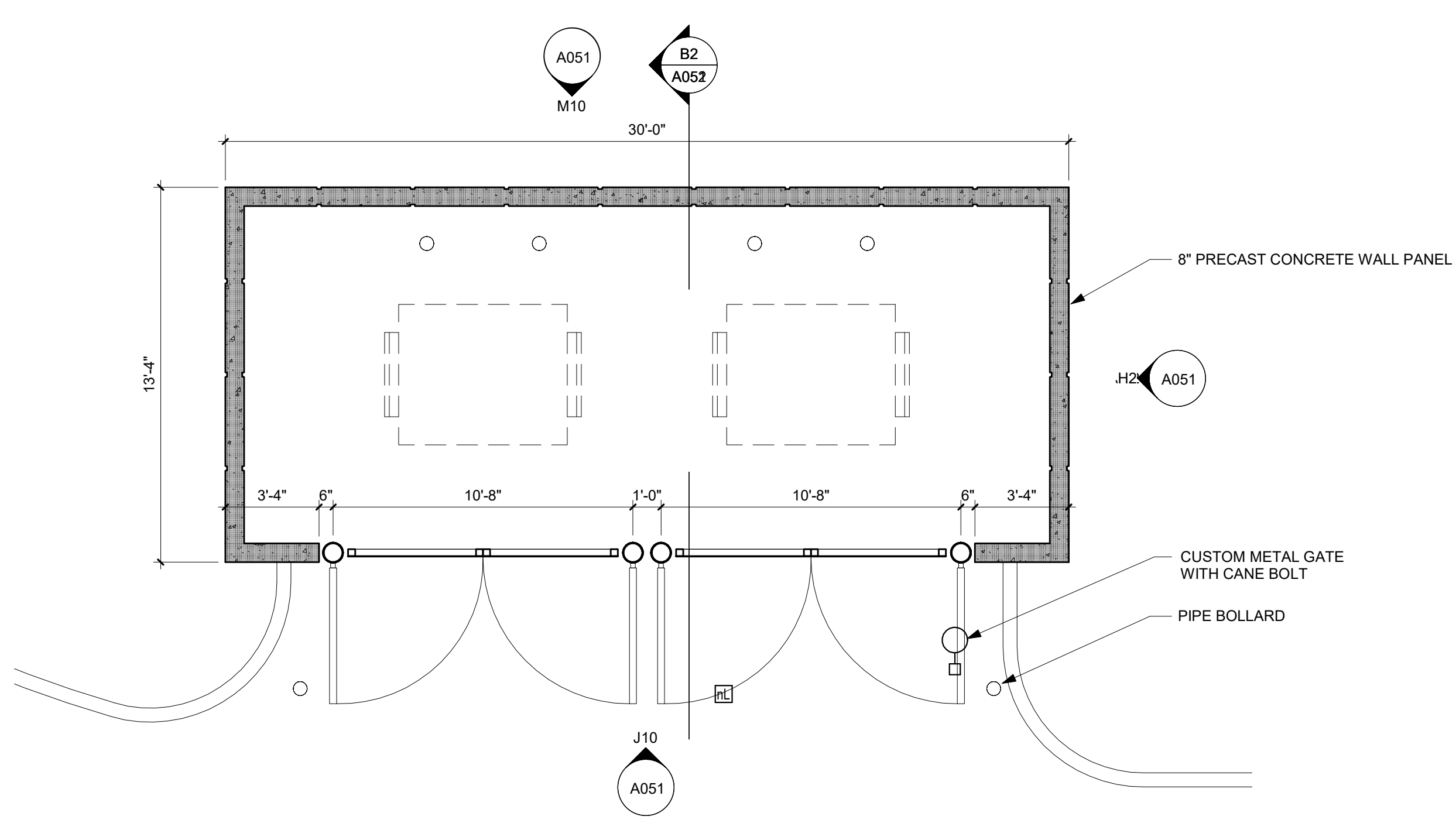


MONUMENT SIGN PRECEDENT (CITY HALL)

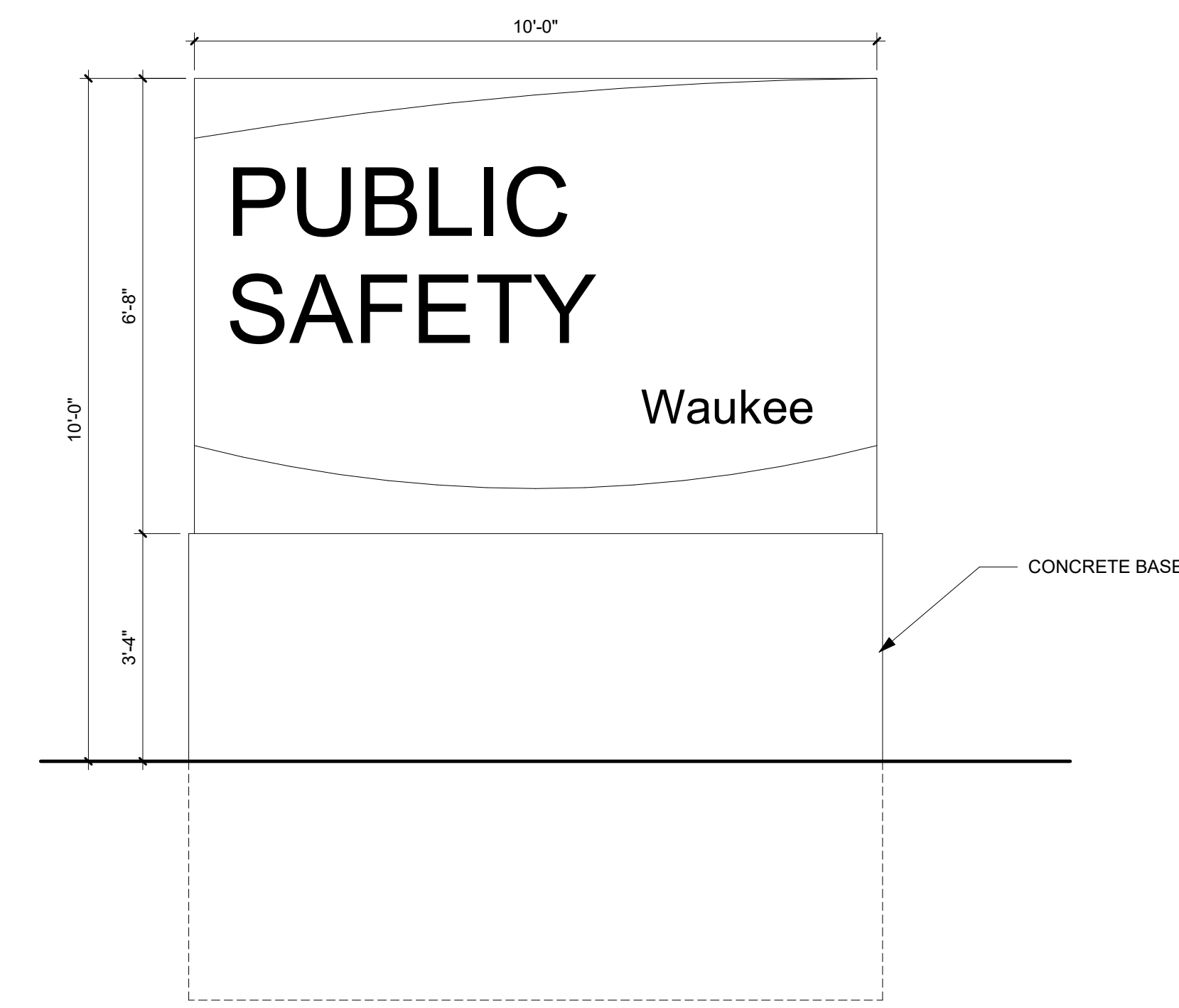
Revision	Description	Date
A		
B		
C		



B2 SECTION - DUMPSTER ENCLOSURE  
1/4" = 1'-0"



B10 ENLARGED PLAN - DUMPSTER ENCLOSURE  
1/4" = 1'-0"



B21 ELEVATION - MONUMENT SIGN  
1/2" = 1'-0"

SITE PLAN SUBMITTAL

OPN Project No.  
**21841001**

Sheet Issue Date  
**SITE PLAN SUBMITTAL 7/20/2023**

Sheet Name  
**ARCHITECTURAL SITE DETAILS**

Sheet Number  
**A051**