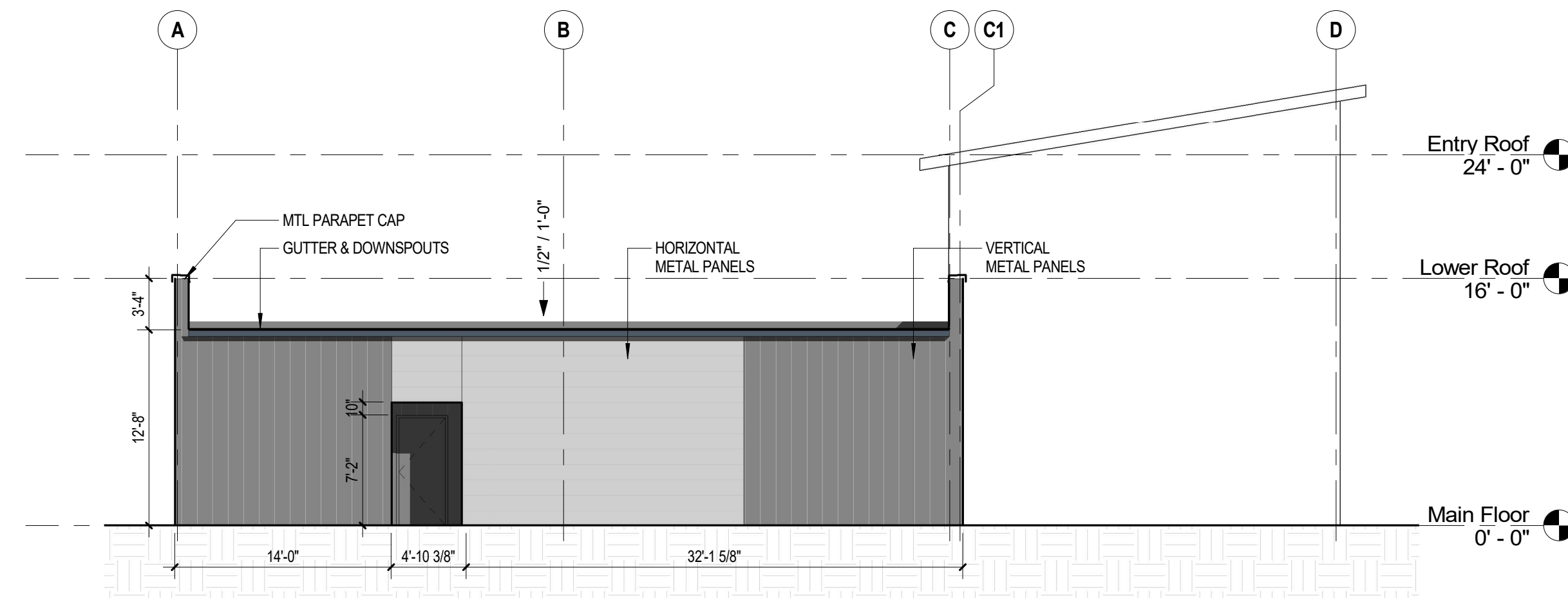


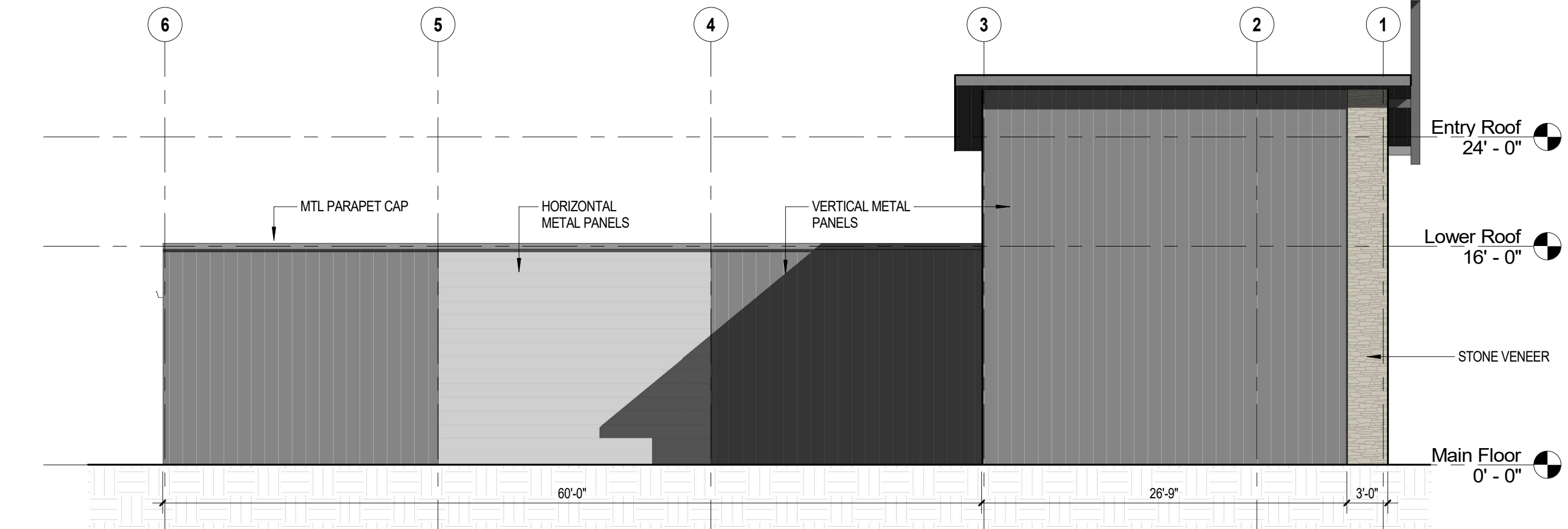
	East (Front)		North (Side)		West (Rear)		South (Side)	
	Area	%	Area	%	Area	%	Area	%
Vertical Metal Siding	212	15%	664	40%	1060	83%	1458	82%
Horizontal Metal Siding	180	12%	175	11%	220	17%	320	18%
Manufactured Stone	391	27%	117	7%	0	0%	0	0%
Stucco	215	15%	595	36%	0	0%	0	0%
Glazing	452	31%	93	6%	0	0%	0	0%
Total Wall Area	1450		1644		1280		1778	

EXTERIOR MATERIALS

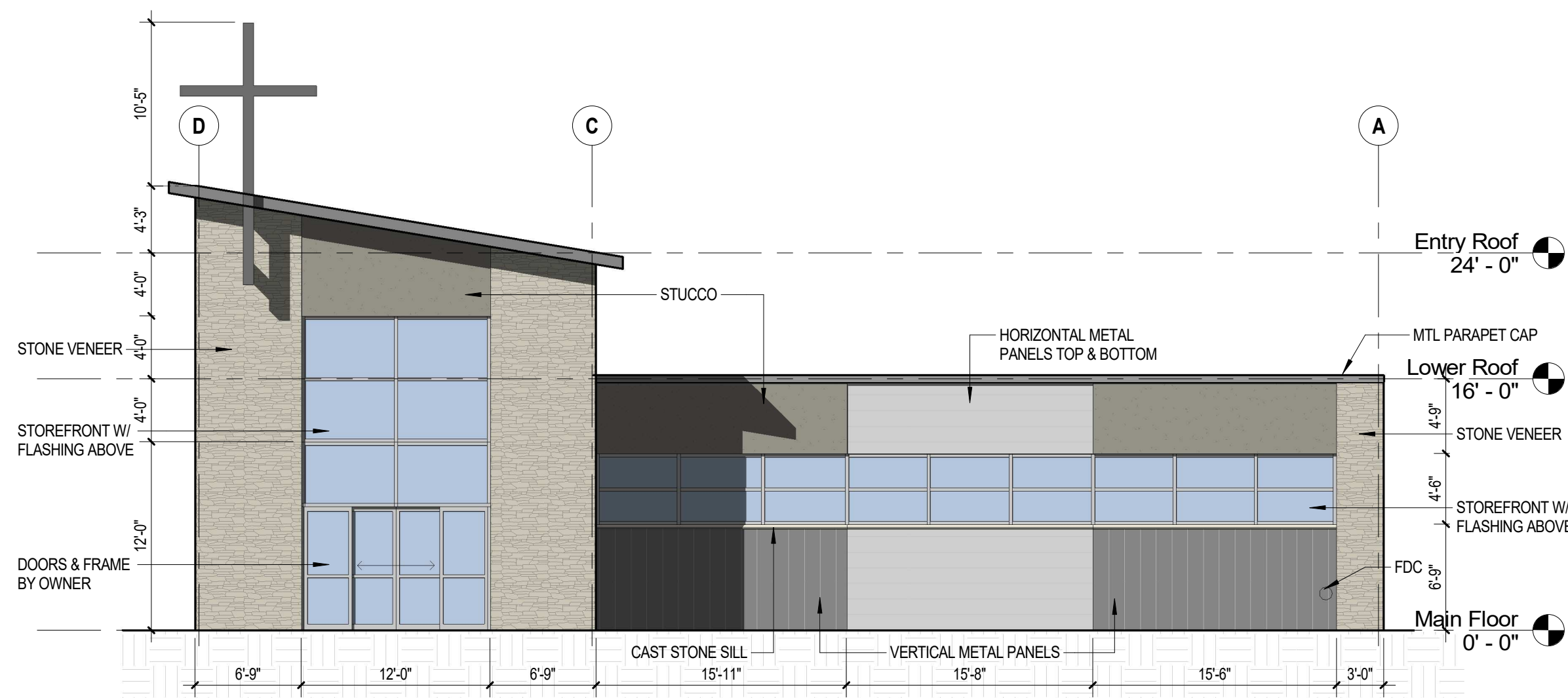
- VERTICAL METAL SIDING: MANUFACTURER - BRIDGER STEEL
 - FLUSH WALL SHIPLAP W/ HIDDEN FASTENER, 12" COVERAGE. COLOR: COAL BLACK RAWHIDE
- HORIZONTAL METAL SIDING: MANUFACTURER - BRIDGER STEEL
 - MODERN ULTRA BATTEN WALL PANEL W/ HIDDEN FASTENER, 13-3/4" COVERAGE. COLOR: GALVALUME
- MANUFACTURED STONE: MANUFACTURER - LITESTONE
 - FLAT SHADOW GREY
- STUCCO: DARK GRAY
- PARAPET CAP AND TRIM: MATCH COAL BLACK RAWHIDE
- WINDOWS AND DOORS: BRUSHED ALUMINUM AND GLASS



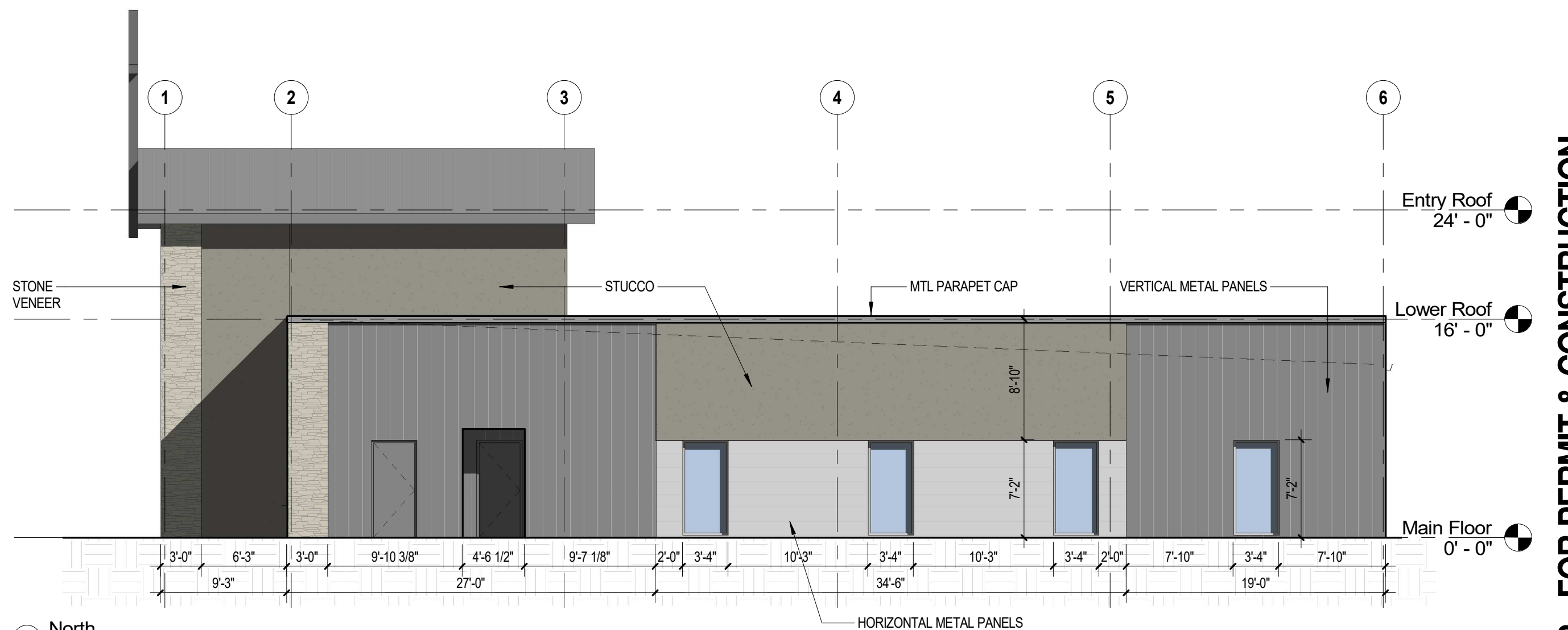
3 West
1/8" = 1'-0"



4 South
1/8" = 1'-0"



1 East
1/8" = 1'-0"



2 North
1/8" = 1'-0"

ABUNDANT LIFE CHURCH

2720 Waco Place, Waukee, IA 50263

Revisions	

ISSUE DATE: 05/25/22 PROJ. #: RA-22004

EXTERIOR ELEVATIONS

06-30-22 - FOR PERMIT & CONSTRUCTION