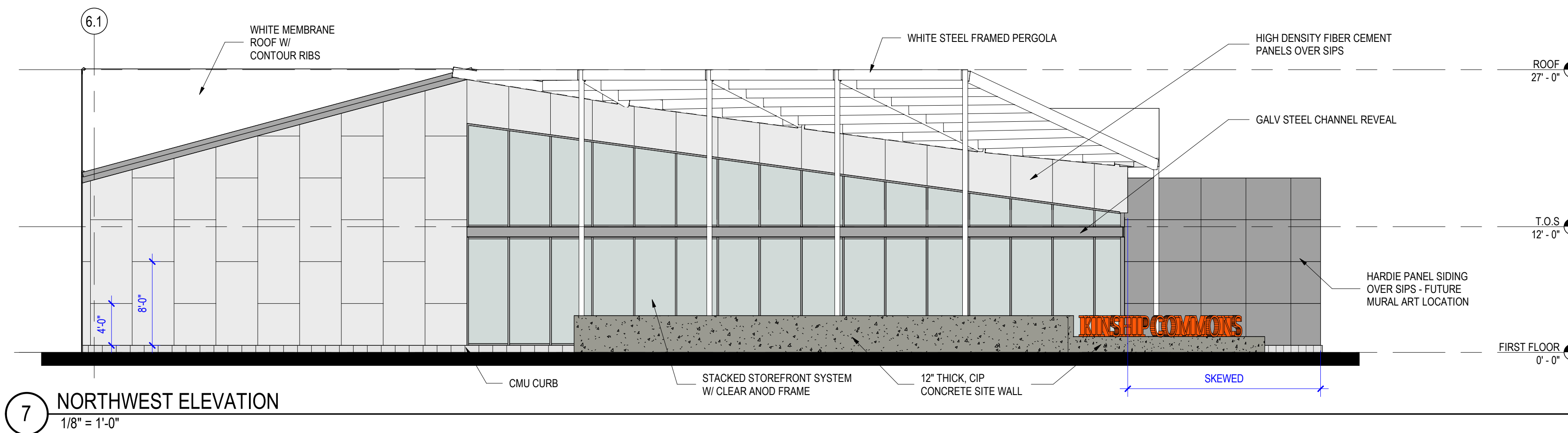


**GENERAL ELEVATION NOTES:**

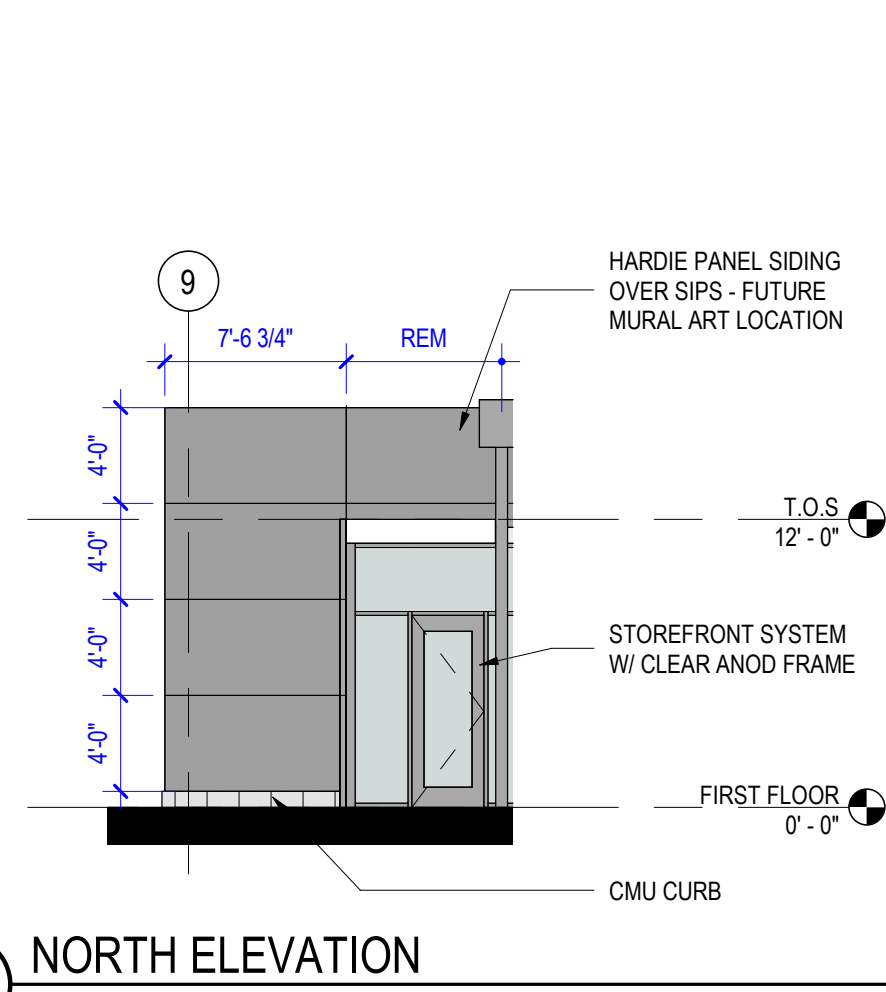
1. SEE ARCHITECTURAL FLOOR PLANS FOR WALL TYPES, WINDOW NUMBERS, DOOR NUMBERS, AND DIMENSIONS.
2. PLACEMENT OF WALL MOUNTED ITEMS (FIRE STROBE, DOOR OPERATOR BUTTON, WALL HYDRANTS, ETC) ARE DIMENSIONED TO CENTERLINE OF ITEM.
3. HATCHED AREA IS FOR REFERENCE ONLY.
4. ANY RETURNS OR BLIND ELEVATIONS NOT SHOWN SHALL BE SIMILAR IN MATERIAL AND MAKEUP TO ADJACENT CONDITIONS OR OTHER SIMILAR CONDITIONS.

**EXTERIOR CLADDING MATERIAL KEY:**

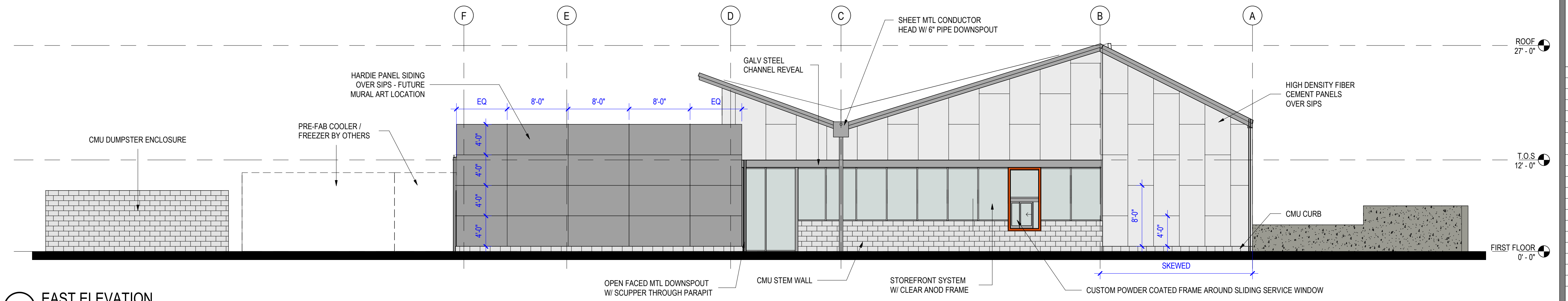
MATERIAL	AREA PERCENTAGE
HIGH DENSITY FIBER CEMENT PANELS	37.1%
HARDIE PANEL SIDING	32.5%
CONCRETE MASONRY UNITS	4.7%
VISION GLASS W/ CLEAR ANOD FRAME	25.6%



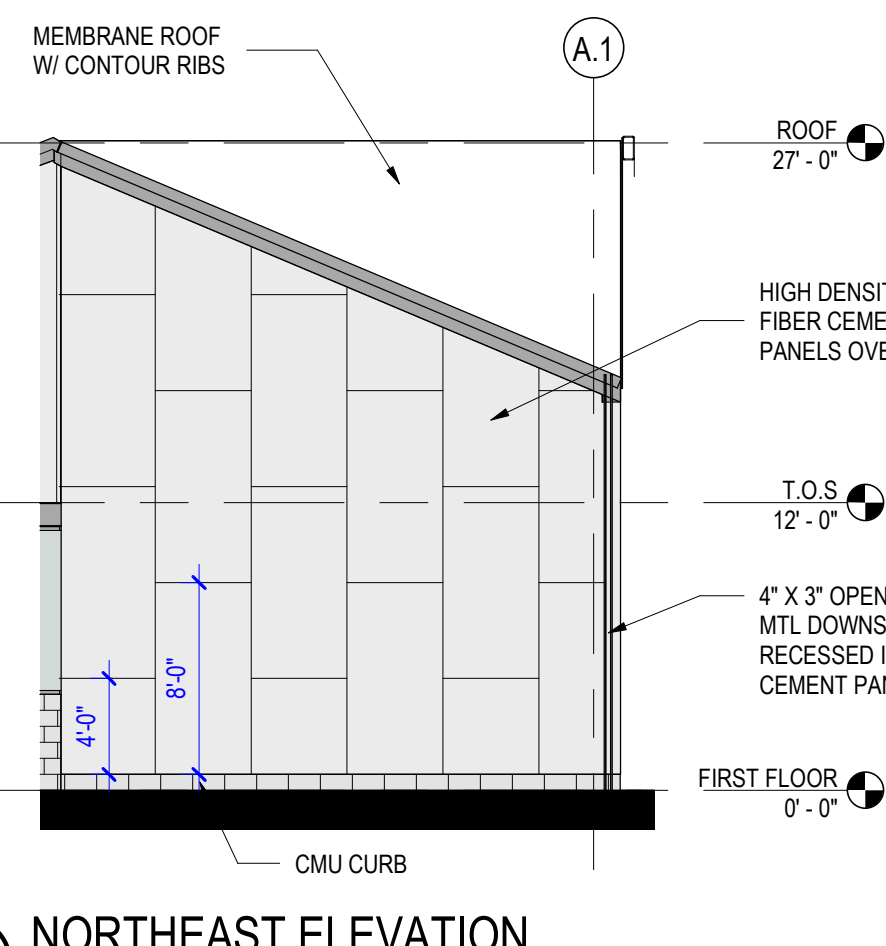
**7 NORTHWEST ELEVATION**  
1/8" = 1'-0"



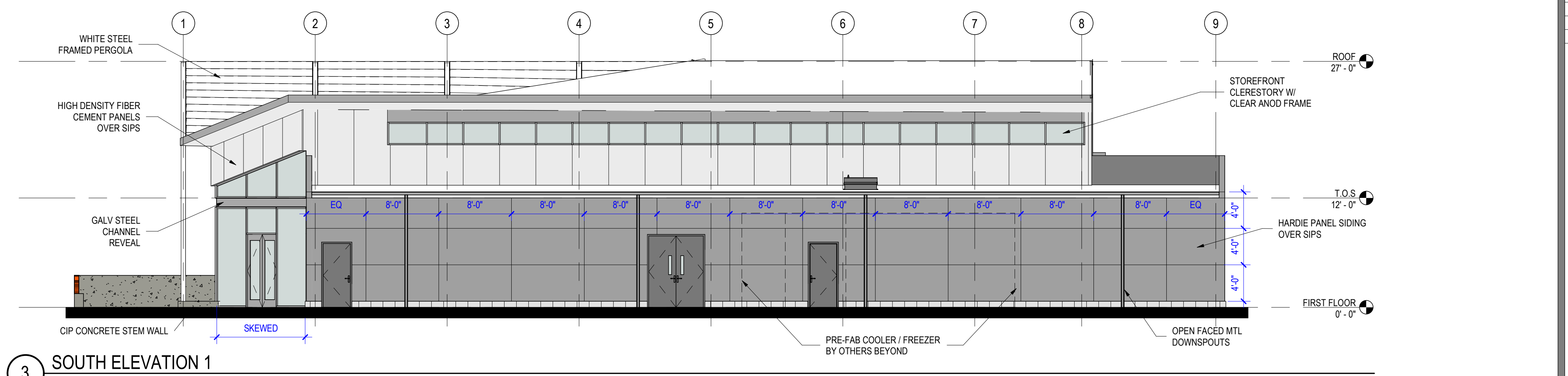
**8 NORTH ELEVATION**  
1/8" = 1'-0"



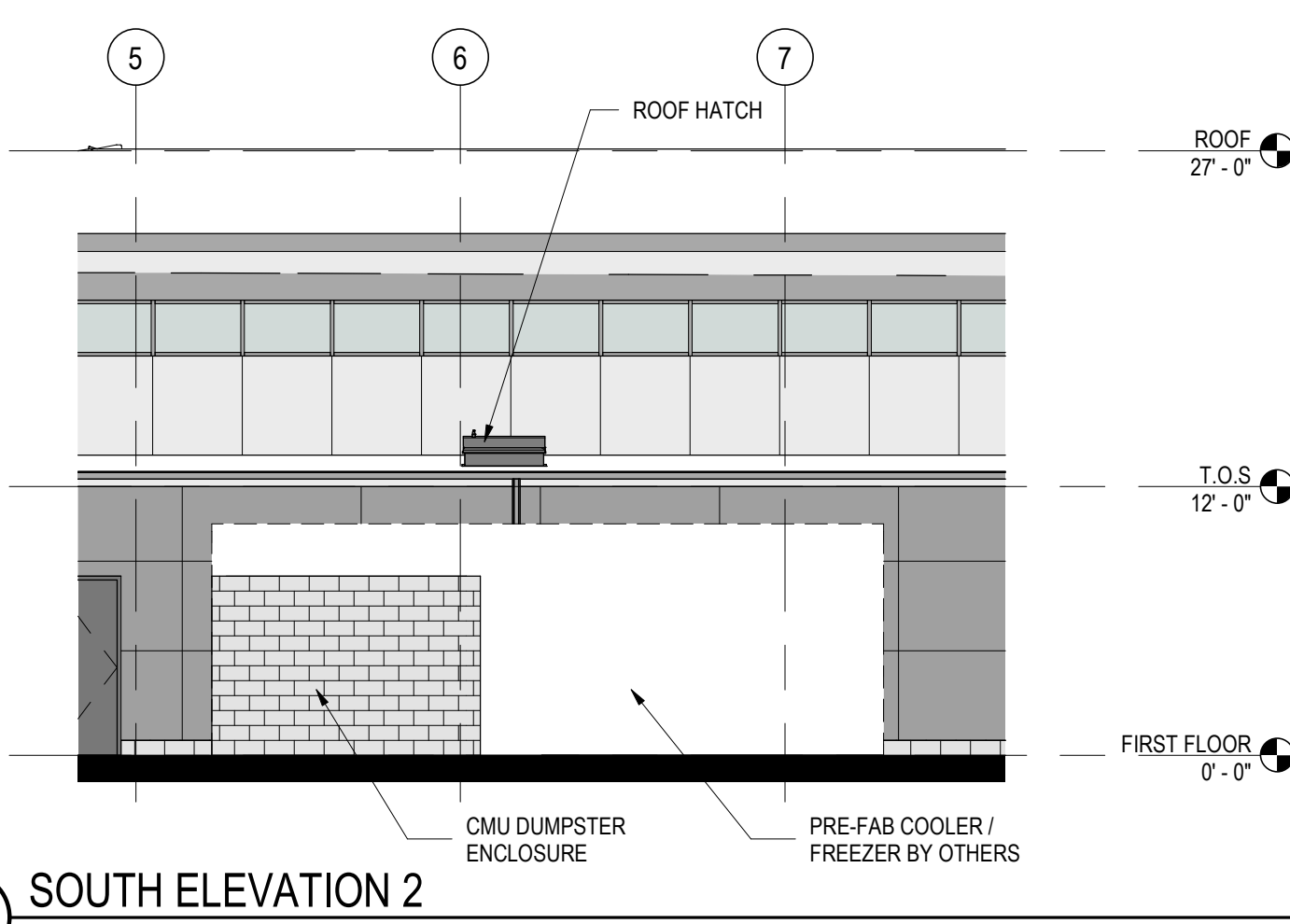
**5 EAST ELEVATION**  
1/8" = 1'-0"



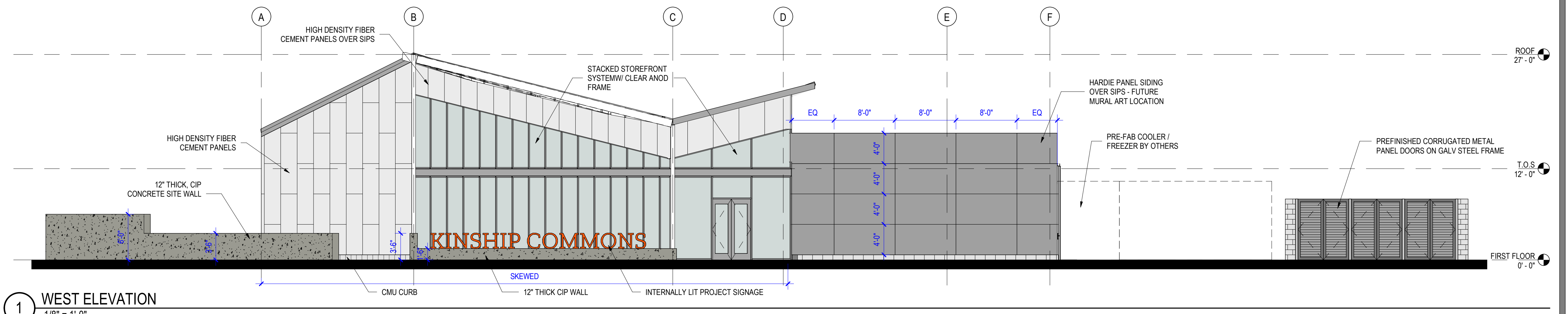
**6 NORTHEAST ELEVATION**  
1/8" = 1'-0"



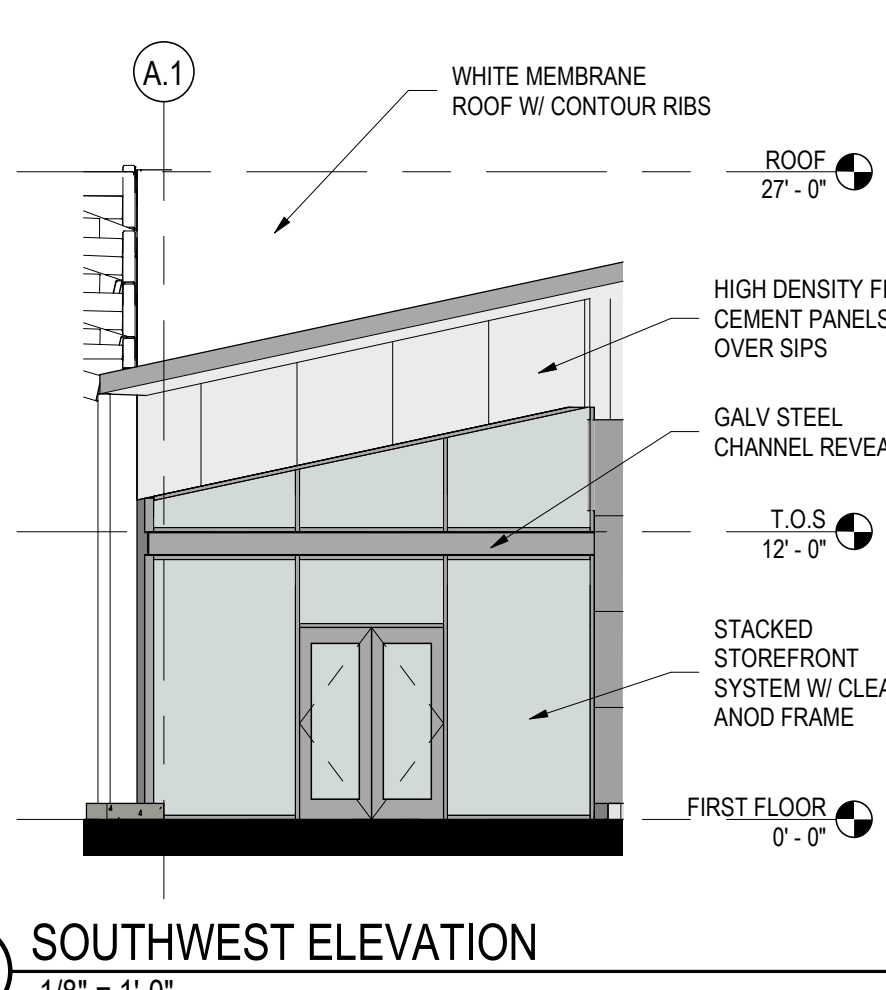
**3 SOUTH ELEVATION 1**  
1/8" = 1'-0"



**4 SOUTH ELEVATION 2**  
1/8" = 1'-0"



**1 WEST ELEVATION**  
1/8" = 1'-0"



**2 SOUTHWEST ELEVATION**  
1/8" = 1'-0"

Autodesk Docs://23054\_Kinship\_Phase 2\_Modern\_Food\_Hall/23054\_Kinship\_Phase 2\_Modern\_Food\_Hall.rvt  
7/5/2023 5:23:04 PM  
SHEET RESPONSIBILITY:INITIAL