

FILE: H:\2023\2304286\DWG\2304286-PLAT.DWG
 DATE: 7/26/2023 1:47 PM
 PLOTTED BY: GUYA SLEBIAN
 TECH: DWG

DATE	07/28/2023
THIRD SUBMITTAL	07/12/2023
SECOND SUBMITTAL	06/20/2023
FIRST SUBMITTAL	

REVISIONS

4121 NW URBANDALE DRIVE
 URBANDALE, IA 50322
 PHONE: (515) 369-4400

TECH: RDR
 ENGINEER: RDR

CSA
 CIVIL DESIGN ADVANTAGE

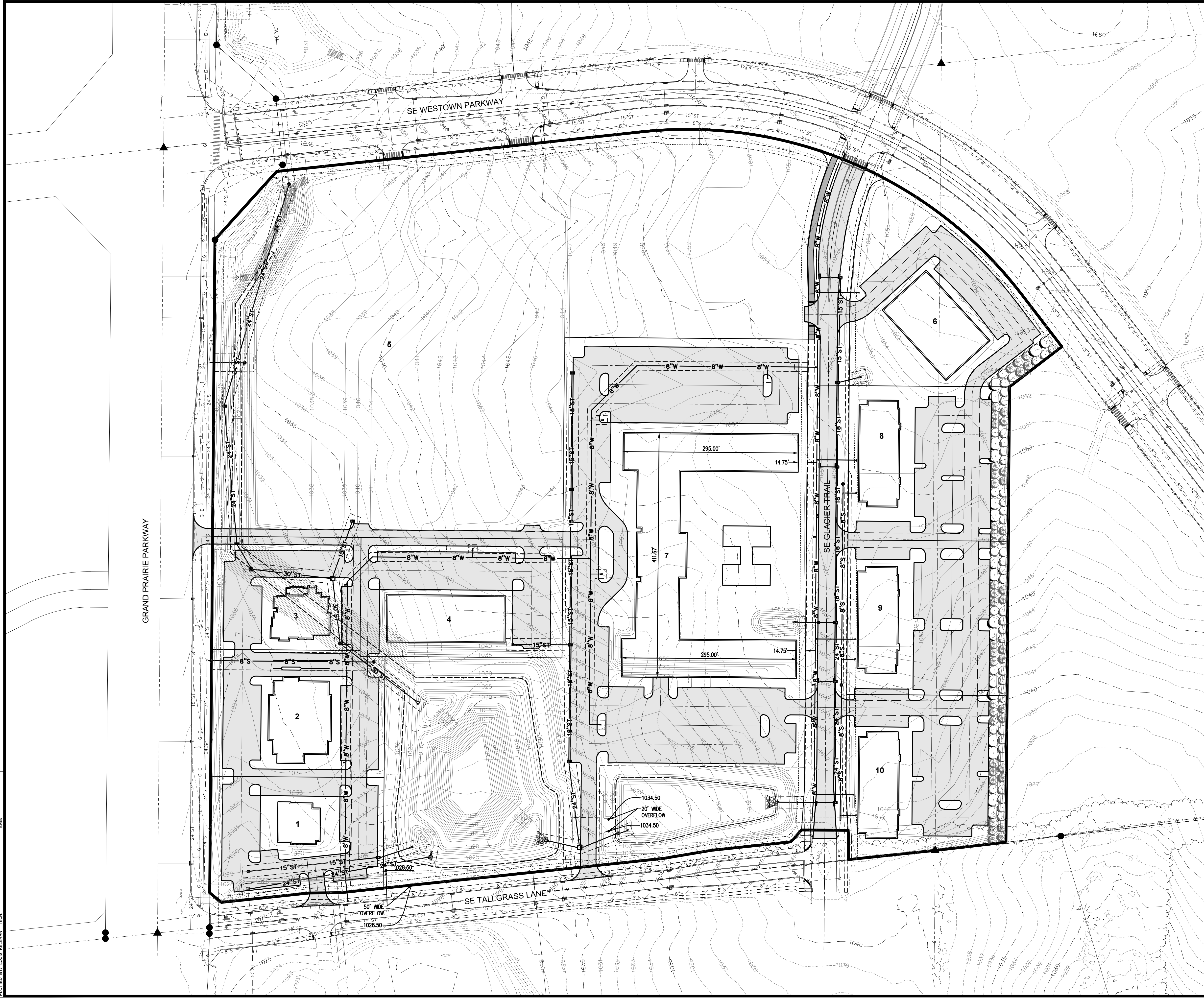
WAUKEE, IOWA

KETTLESTONE CENTRAL - SOUTH
PRELIMINARY PLAT (DIMENSION PLAN)

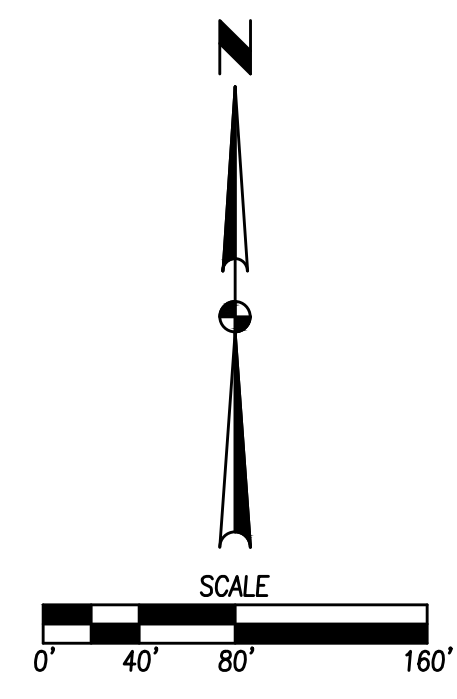
2 / 4

2304.286

FILE: H:\2023\2304286\DWG\2304286- PRELIMINARY-PLAT.DWG
 COMMENT: 7/28/2023 1:47 PM
 PLOTTED BY: AOS/SELEMAN
 TECH: ENR



NOTE
 1. PRELIMINARY CONCEPT PLAN IS SUBJECT TO CHANGE.



	DATE	07/28/2023
	REVISIONS	
	THIRD SUBMITTAL	07/12/2023
	SECOND SUBMITTAL	06/20/2023
	FIRST SUBMITTAL	
4121 NW URBANDALE DRIVE URBANDALE, IA 50322 PHONE: (515) 369-4400		
CIVIL DESIGN ADVANTAGE		ENGINEER: RDR TECH:
KETTLESTONE CENTRAL - SOUTH PRELIMINARY PLAT (PRELIMINARY CONCEPT PLAN) WAUKEE, IOWA		
4	4	2304.286