

NO.	DATE	DESCRIPTION
1	8/11/23	ASI #1

EXTERIOR MATERIAL SELECTIONS
MATERIAL SELECTIONS TO CONVEY GENERAL DESIGN INTENT ONLY. CONFIRM ALL FINAL SELECTIONS WITH TENANT PRIOR TO ORDERING

CLEAR INSULATING GLASS WITH LOW-E COATING (IG-1)
-GLASS PRODUCT:
-BASIS OF DESIGN: OLDCASTLE SNR 43 ON CLEAR
-OVERALL THICKNESS: 1"
-1/4" GUARDIAN SUNGUARD SNR 43 ON CLEAR RADIANT LOW-E
-1/2" CAVITY (90% ARGON / 10% AIR)
-1/4" GUARDIAN CLEAR
-PERFORMANCE:
-VISIBLE LIGHT: 43%
-SOLAR ENERGY: 19%
-U.V: 17%
-VISIBLE LIGHT REFLECTANCE (EXT): 27%
-VISIBLE LIGHT REFLECTANCE (INT): 14%
-SOLAR ENERGY REFLECTANCE: 42%
-WINTER U-FACTOR: 0.24
-SHADING COEFFICIENT: 0.26
-SOLAR HEAT GAIN COEFFICIENT: 0.22
-LIGHT/SOLAR GAIN: 1.94

OPTION 1 EXTERIOR MATERIAL SELECTIONS

ROOFING: GUTTER & FASCIA
FIRESTONE OR SIMILAR
- COLOR: BLACK
- INCLUDES:
- D-EDGE & SOFFIT TRIM

ROOFING: DOWNSPOUTS
FIRESTONE OR SIMILAR
- COLOR: BLACK
- MATCH GUTTERS

BRICK VENEER
MUTUAL MATERIALS
- BRICK COLOR:
- PEWTER MISSION
- MORTAR COLOR:
- SM100 GRAY
- RUNNING BOND

COMPOSITE WOOD CLADDING & CANOPY SOFFIT
IDENTITY WOOD PRODUCTS
- TEXTURE: SANDBLAST
- 1200 PREZTEL MEDIUM
- REVEAL:
- 1/16"

TEXTURED HARDIEPANEL SIDING
JAMES HARDIE
- TEXTURE: FINE SAND
- COLOR INTENT:
- MATCH SW ANEW GRAY

EXTERIOR STOREFRONT FINISH
SEE SPECS
- ANODIZED ALUM
- COLOR INTENT:
- BLACK
- CONFIRM W/ TENANT

OPTION 2 EXTERIOR MATERIAL SELECTIONS

ROOFING: GUTTER & FASCIA
FIRESTONE OR SIMILAR
- COLOR: BLACK
- INCLUDES:
- D-EDGE & SOFFIT TRIM

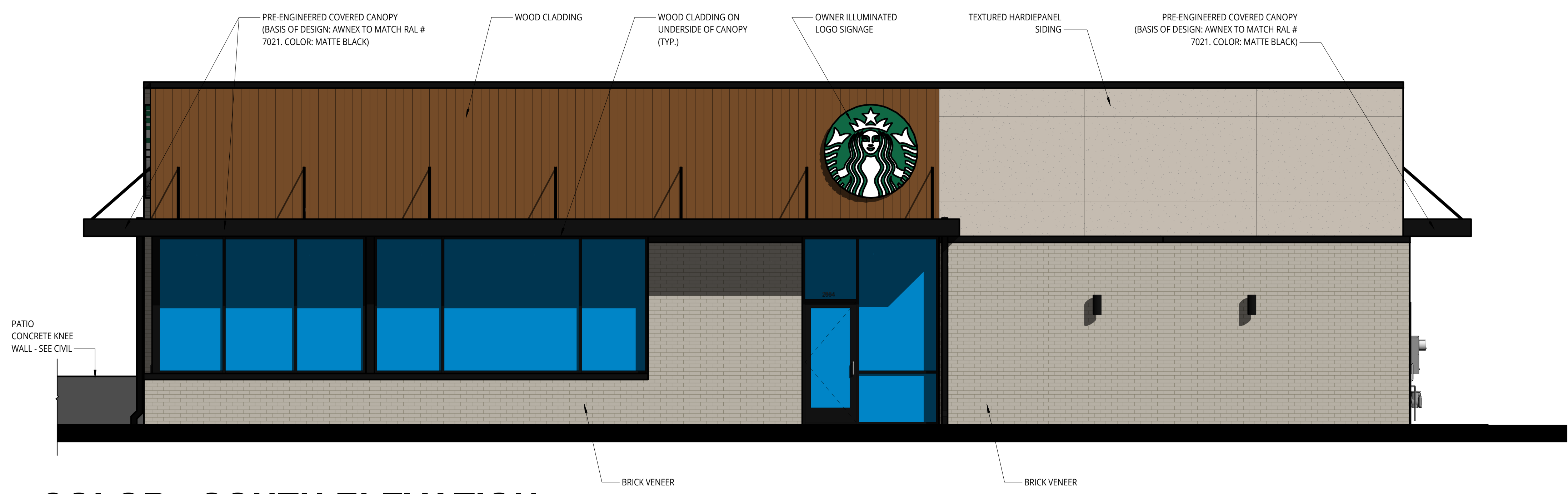
ROOFING: DOWNSPOUTS
FIRESTONE OR SIMILAR
- COLOR: BLACK
- MATCH GUTTERS

BRICK VENEER
GLEN-GARY
- BRICK COLOR:
- CHARCOAL GRAY VELOUR
- MORTAR COLOR:
- SM770 SABLE
- RUNNING BOND

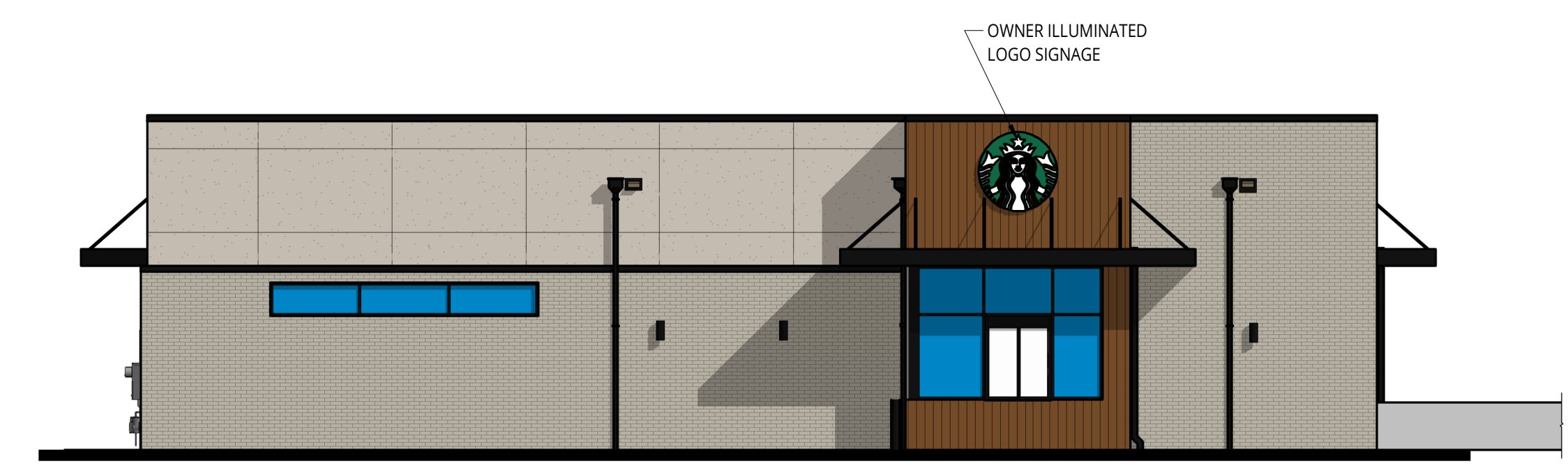
WOOD CLADDING & CANOPY SOFFIT
IDENTITY WOOD PRODUCTS
- TEXTURE: SANDBLAST
- 1204 EXTRA CRISPY
- REVEAL:
- 1/16"

TEXTURED HARDIEPANEL SIDING
JAMES HARDIE
- TEXTURE: FINE SAND
- COLOR INTENT:
- MATCH SW SOFTER TAN

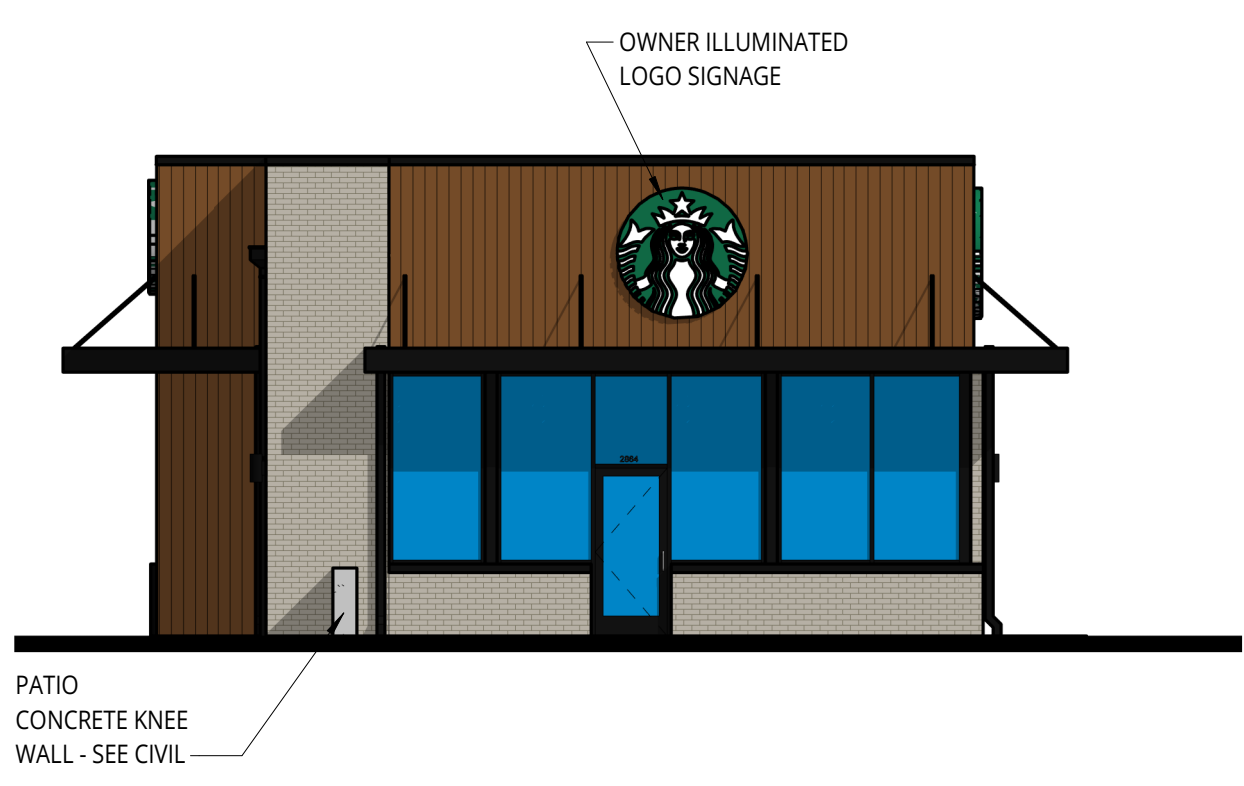
EXTERIOR STOREFRONT FINISH
SEE SPECS
- ANODIZED ALUM
- COLOR INTENT:
- BLACK
- CONFIRM W/ TENANT



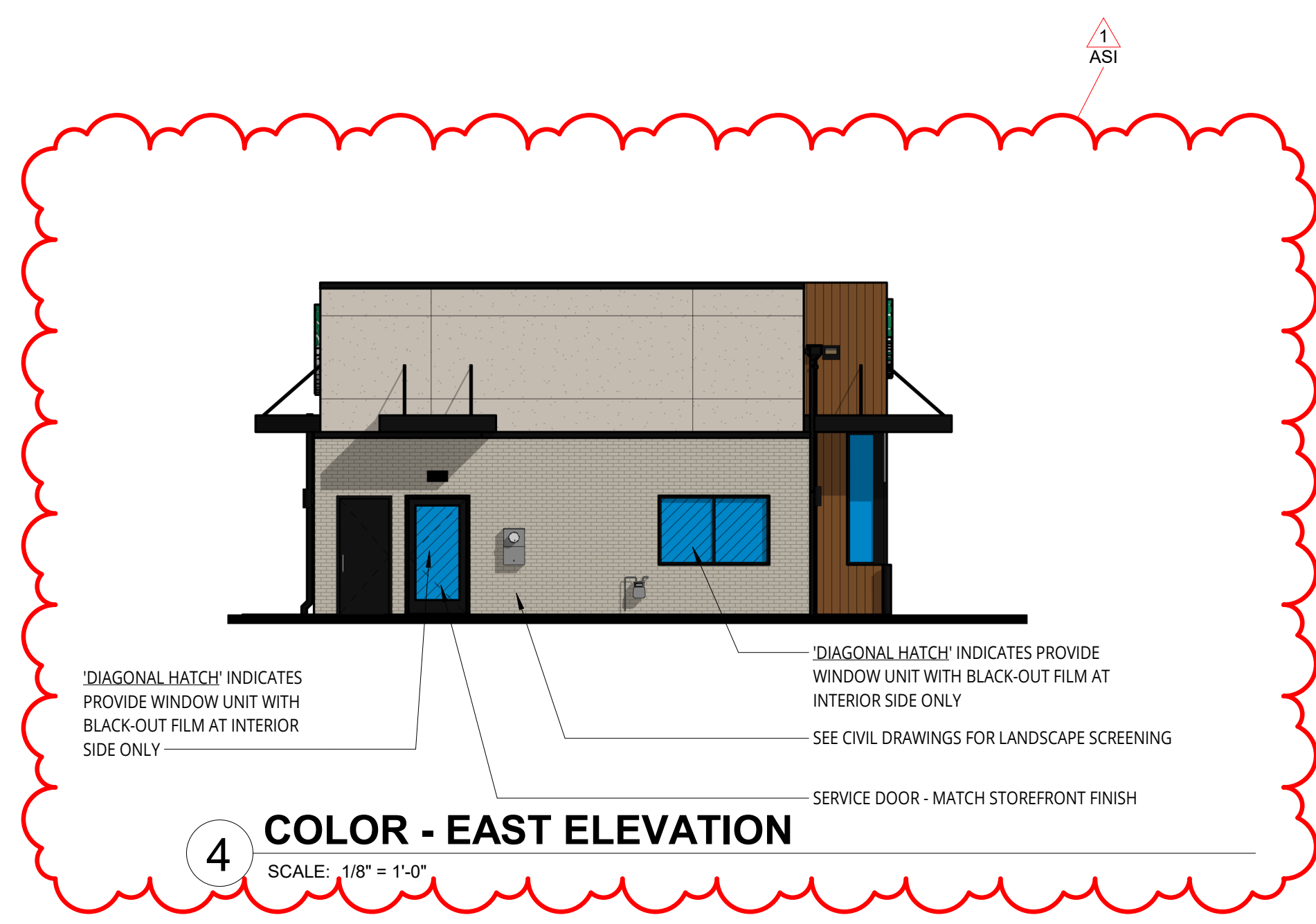
1 COLOR - SOUTH ELEVATION
SCALE: 1/4" = 1'-0"



2 COLOR - NORTH ELEVATION
SCALE: 1/8" = 1'-0"



3 COLOR - WEST LEFT ELEVATION
SCALE: 1/8" = 1'-0"



4 COLOR - EAST ELEVATION
SCALE: 1/8" = 1'-0"

MATERIAL PERCENTAGES

NORTH FACADE

MATERIAL	AREA	PERCENTAGE
BRICK VENEER	414 SF	28%
WOOD CLADDING	760 SF	52%
HARDIEPANEL SIDING	169 SF	12%
GLAZING	117 SF	8%
TOTAL	1,460 SF	100%

EAST FACADE

MATERIAL	AREA	PERCENTAGE
BRICK VENEER	257 SF	39%
WOOD CLADDING	82 SF	12%
HARDIEPANEL SIDING	260 SF	40%
GLAZING	62 SF	9%
TOTAL	661 SF	100%

SOUTH FACADE

MATERIAL	AREA	PERCENTAGE
BRICK VENEER	160 SF	12%
WOOD CLADDING	403 SF	27%
HARDIEPANEL SIDING	495 SF	34%
GLAZING	402 SF	27%
TOTAL	1,460 SF	100%

WEST FACADE

MATERIAL	AREA	PERCENTAGE
BRICK VENEER	157 SF	23%
WOOD CLADDING	321 SF	47%
HARDIEPANEL SIDING	N/A SF	0%
GLAZING	206 SF	30%
TOTAL	684 SF	100%

TOTAL

MATERIAL	AREA	PERCENTAGE
BRICK VENEER	988 SF	23%
WOOD CLADDING	1,566 SF	37%
HARDIEPANEL SIDING	924 SF	21%
GLAZING	787 SF	19%
TOTAL	4,265 SF	100%