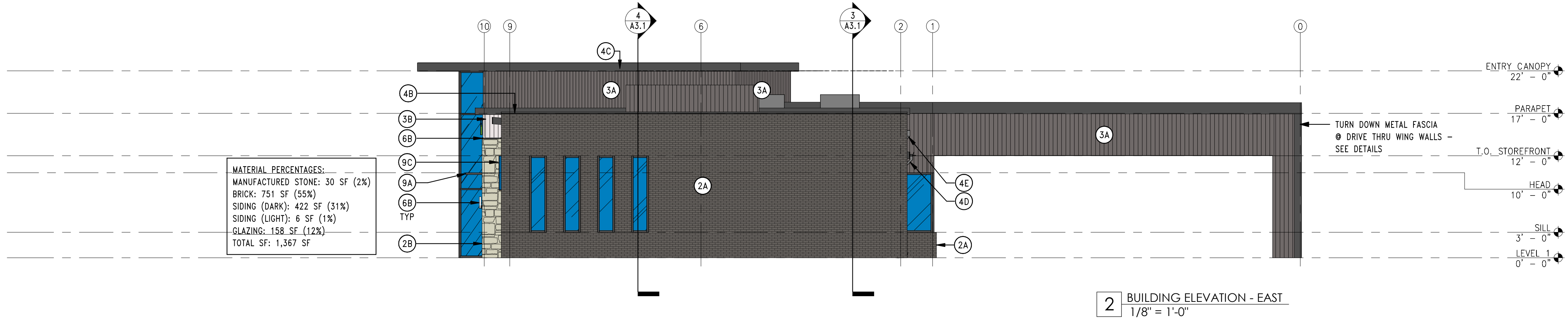
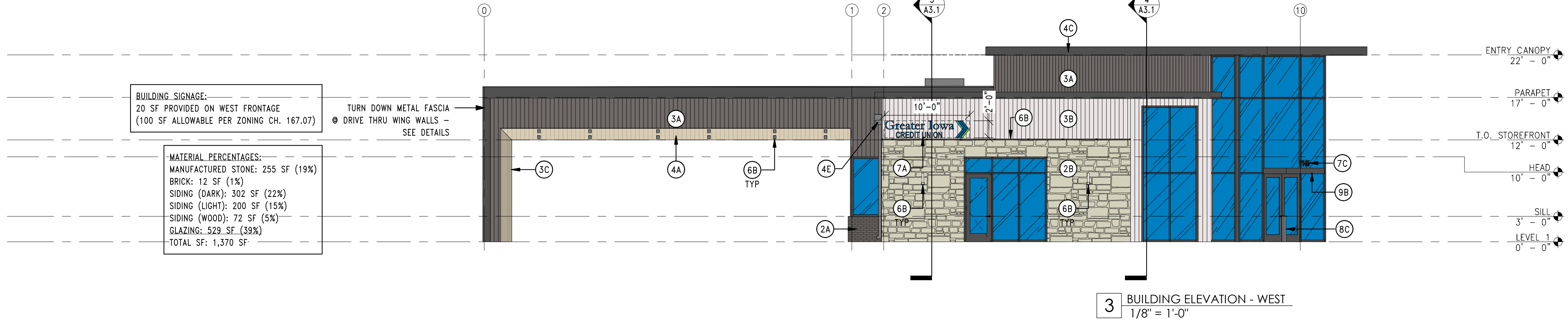


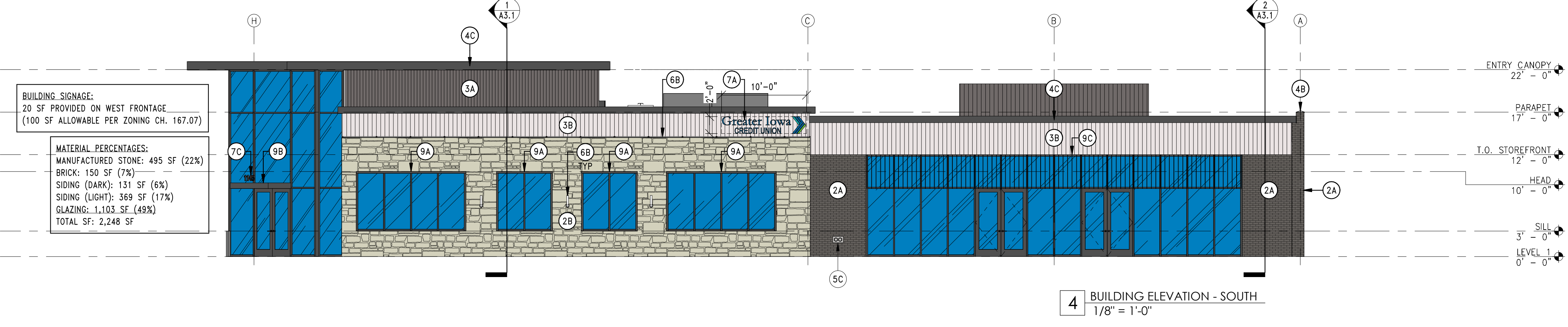
1 BUILDING ELEVATION - NORTH  
1/8" = 1'-0"



2 BUILDING ELEVATION - EAST  
1/8" = 1'-0"



3 BUILDING ELEVATION - WEST  
1/8" = 1'-0"



4 BUILDING ELEVATION - SOUTH  
1/8" = 1'-0"

**MATERIAL PERCENTAGES:**  
MANUFACTURED STONE: 528 SF (23%)  
BRICK: 611 SF (27%)  
SIDING (DARK): 485 SF (21%)  
SIDING (LIGHT): 234 SF (10%)  
GLAZING: 112 SF (5%)  
HM DOORS: 74 SF (3%)  
MEMBRANE ROOF: 237 SF (10%)  
TOTAL SF: 2,281 SF

**MATERIAL PERCENTAGES:**  
MANUFACTURED STONE: 30 SF (2%)  
BRICK: 751 SF (55%)  
SIDING (DARK): 422 SF (31%)  
SIDING (LIGHT): 6 SF (1%)  
GLAZING: 158 SF (12%)  
TOTAL SF: 1,367 SF

**BUILDING SIGNAGE:**  
20 SF PROVIDED ON WEST FRONTAGE  
(100 SF ALLOWABLE PER ZONING CH. 167.07)

**MATERIAL PERCENTAGES:**  
MANUFACTURED STONE: 255 SF (19%)  
BRICK: 12 SF (1%)  
SIDING (DARK): 302 SF (22%)  
SIDING (LIGHT): 200 SF (15%)  
SIDING (WOOD): 72 SF (5%)  
GLAZING: 529 SF (39%)  
TOTAL SF: 1,370 SF

**BUILDING SIGNAGE:**  
20 SF PROVIDED ON WEST FRONTAGE  
(100 SF ALLOWABLE PER ZONING CH. 167.07)

**MATERIAL PERCENTAGES:**  
MANUFACTURED STONE: 495 SF (22%)  
BRICK: 150 SF (7%)  
SIDING (DARK): 131 SF (6%)  
SIDING (LIGHT): 369 SF (17%)  
GLAZING: 1,103 SF (49%)  
TOTAL SF: 2,248 SF

- EXTERIOR ELEVATIONS - KEYED NOTES:**
- CONCRETE SLAB/SLOOP/FOUNDATION:**  
RADIUS-TROWEL ALL EXPOSED 90 DEGREE EDGES.  
PROVIDE SMOOTH FINISH ON VERTICAL SURFACES.  
PROVIDE BROOM FINISH ON HORIZONTAL SURFACES.  
SEE STRUCTURAL.
  - BRICK VENEER (RUNNING BOND):**  
PROVIDE & INSTALL 8" MODULAR BRICK.  
EXPANSION/CONSTRUCTION JOINTS AS INDICATED BY (C.J.).  
PATTERN/JOINT: RUNNING BOND, RAKED JOINT.  
SEE SPECIFICATION.
  - STONE VENEER:**  
PROVIDE & INSTALL STONE VENEER.  
SEE SPECIFICATION.
  - ALUMINUM PLANK SIDING:**  
PROVIDE & INSTALL ALUMINUM SIDING W/ CLIP SYSTEM & ALL ASSOCIATED ACCESSORIES. SEE SPECIFICATION.  
3A. COLOR: DARK  
3B. COLOR: LIGHT  
3C. COLOR: WOOD
  - ALUMINUM PLANK SOFFIT:**  
PROVIDE & INSTALL ALUMINUM PLANK SOFFIT & ALL ASSOCIATED ACCESSORIES. SEE SPECIFICATION.
  - PRE-FINISHED METAL COPING:**  
PROVIDE & INSTALL METAL COPING CAP. SEE SPECIFICATION.
  - PRE-FINISHED METAL FASCIA:**  
PROVIDE & INSTALL METAL FASCIA. SEE SPECIFICATION.
  - PRE-FINISHED METAL GUTTER & DOWNSPOUT:**  
PROVIDE & INSTALL GUTTER AND DOWNSPOUT TO MATCH PRE-FINISHED METAL FASCIA. ATTACH TO DOWNSPOUT BOOT. SEE SPECIFICATION. SEE CIVIL FOR BELOW GRADE DRAINAGE.
  - PRE-FINISHED METAL SCUPPER/COLLECTOR & DOWNSPOUT:**  
PROVIDE & INSTALL SCUPPER & DOWNSPOUT TO MATCH PRE-FINISHED METAL FASCIA. ATTACH TO DOWNSPOUT BOOT. SEE SPECIFICATION. SEE CIVIL FOR BELOW GRADE DRAINAGE.
  - GAS METER:**  
PROVIDE & INSTALL GAS METER, PIPING & ALL ASSOCIATED ACCESSORIES. SEE MECHANICAL. COORDINATE WITH SERVICE PROVIDER.
  - HOSE BIB CONNECTION:**  
PROVIDE & INSTALL HOSE BIB CONNECTION. HEIGHT AS SHOWN ON ELEVATIONS. SEE PLUMBING.
  - FIRE DEPARTMENT CONNECTION:**  
PROVIDE & INSTALL FIRE DEPARTMENT CONNECTION. COORDINATE FINAL LOCATION WITH LOCAL FIRE DEPARTMENT. SEE PLUMBING.
  - LAMB'S TONGUE DRAIN:**  
PROVIDE & INSTALL LAMB'S TONGUE DRAIN. SEE PLUMBING.
  - STOREFRONT WINDOW SYSTEM:**  
THERMALLY-BROKEN STOREFRONT SYSTEM.  
FINISH: BLACK ANODIZED  
SEE WINDOW ELEVATIONS. SEE SPECIFICATIONS.
  - MECHANICAL LOUVER:**  
PROVIDE & INSTALL MECHANICAL LOUVER. SEE MECHANICAL.
  - ROOFTOP MECHANICAL UNIT:**  
PROVIDE & INSTALL ROOFTOP MECHANICAL UNIT & ASSOCIATED ACCESSORIES. SEE MECHANICAL.
  - ELECTRICAL METERS:**  
PROVIDE & INSTALL ELECTRICAL METERS, CONDUIT, WIRING ALL ASSOCIATED ACCESSORIES. SEE ELECTRICAL. COORDINATE WITH SERVICE PROVIDER.
  - LIGHT FIXTURE:**  
PROVIDE & INSTALL EXTERIOR LIGHT FIXTURE. SEE ELECTRICAL.
  - BUILDING SIGNAGE:**  
PROVIDE & INSTALL EXTERIOR BUILDING SIGNAGE. COORDINATE WITH OWNER. SIZE AS INDICATED ON ELEVATIONS. SEE SPECIFICATION.  
FINISH: TO BE SELECTED BY ARCHITECT
  - ROOM SIGNAGE:**  
PROVIDE AND INSTALL ROOM SIGNAGE. COORDINATE WITH OWNER. SEE TYPICAL MOUNTING HEIGHTS. SEE SPECIFICATION.
  - ADDRESS SIGNAGE:**  
PROVIDE AND INSTALL EXTERIOR ADDRESS SIGNAGE (8" TALL). COORDINATE WITH OWNER. SEE SPECIFICATION.  
FINISH: TO BE SELECTED BY ARCHITECT
  - RAPID ACCESS ENTRY KEY BOX:**  
PROVIDE & INSTALL NEW RAPID ACCESS ENTRY KEYBOX (KNOX BOX). COORDINATE FINAL LOCATION WITH LOCAL FIRE DEPARTMENT. SEE SPECIFICATION. COLOR: BLACK
  - NIGHT DROP:**  
PROVIDE & INSTALL PRE-FABRICATED SECURE NIGHT DROP. SEE SPECIFICATION.
  - ADA PUSH BUTTON BOLLARD:**  
PROVIDE & INSTALL BOLLARD STYLE ADA PUSH BUTTON FOR ADA ACTUATOR. SEE SPECIFICATION.
  - METAL AWNING:**  
PROVIDE & INSTALL CUSTOM METAL WINDOW AWNINGS. SEE DETAILS & SPECIFICATION.
  - BUILDING CANOPY:**  
PROVIDE & INSTALL ALUMINUM EXTERIOR BUILDING CANOPY. COLOR AS SELECTED BY ARCHITECT. SEE SPECIFICATION, SECTIONS & DETAILS.
  - METAL FINIS:**  
PROVIDE & INSTALL PRE-FINISHED METAL VERTICAL FINIS. INSTALL EASTERN FACE TO HAVE CUSTOM 'GREATER IOWA BLUE' FINISH & WESTERN FACE TO HAVE CUSTOM 'GREATER IOWA GREEN' FINISH.
  - ROOFING MEMBRANE:**  
PROVIDE & INSTALL SELF-ADHERED ROOFING MEMBRANE, SEE ASSEMBLIES & SPECIFICATION.

**DESIGN AND ENGINEERING BY OTHERS:**  
THE DESIGN AND ENGINEERING OF ALL MECHANICAL, ELECTRICAL AND PLUMBING SYSTEMS SHALL BE PROVIDED BY A SEPARATE LICENSED DESIGN-BUILD CONTRACTOR WHO IS SOLELY RESPONSIBLE FOR THE DESIGN AND ENGINEERING OF A FULLY COMPLIANT SYSTEM. ANY MECHANICAL, ELECTRICAL AND PLUMBING ITEMS SHOWN ON THESE DRAWINGS ARE PROVIDED TO THE CONTRACTOR FOR THE ARCHITECT AND OWNER'S PRACTICAL AND AESTHETIC PREFERENCES ONLY. THE LICENSED DESIGN-BUILD CONTRACTOR SHALL PROVIDE A SEPARATE SET OF DRAWINGS AND CALCULATIONS TO THE ARCHITECT FOR REVIEW.

**OVERALL BUILDING MATERIAL PERCENTAGES:**  
MANUFACTURED STONE: 1,308 SF (18%)  
BRICK: 1,524 SF (21%)  
SIDING (DARK): 1,340 SF (18%)  
SIDING (LIGHT): 809 SF (11%)  
SIDING (WOOD): 72 SF (1%)  
HM DOORS: 74 SF (1%)  
MEMBRANE ROOF: 237 SF (3%)  
GLAZING: 1,902 SF (26%)  
TOTAL BUILDING: 7,266 SF

**EXTERIOR MATERIALS LEGEND:**

**BRICK VENEER:**  
MFG: GLEN-GERY  
PRODUCT: EBONITE VELOUR

**STONE VENEER:**  
MFG: EDEN STONE  
PRODUCT: ROYAL CHATEAU TUMBLED

**ALUMINUM PLANK SIDING (DARK):**  
MFG: MAC METAL ARCHITECTURAL  
PRODUCT: HARRYWOOD  
COLOR: SMOKY QUARTZ

**ALUMINUM PLANK SIDING (LIGHT):**  
MFG: MAC METAL ARCHITECTURAL  
PRODUCT: HARRYWOOD  
COLOR: WHITE OAK

**ALUMINUM PLANK SIDING (WOOD):**  
MFG: MAC METAL ARCHITECTURAL  
PRODUCT: HARRYWOOD  
COLOR: SMOKED BIRCH

**ALUMINUM PLANK SOFFIT:**  
MFG: MAC METAL ARCHITECTURAL  
PRODUCT: HARRYWOOD, VENTED  
COLOR: SMOKED BIRCH

**METAL TRIMS/FASCIAS/ETC:**  
KYNAR 500 FINISH, 'BLACK'

**STOREFRONT WINDOWS:**  
BLACK ANODIZED FRAMES W/ DOUBLE-PANE, CLEAR, ARGON-FILLED PANES

**EXTERIOR ELEVATIONS - GENERAL NOTES:**

- DIMENSIONS SHOWN ARE BASED ON ACTUAL WALL THICKNESS. SEE WALL TYPES AND DETAILS FOR MORE INFORMATION.
- DIMENSIONS AND ELEVATIONS AT WINDOWS AND DOORS ARE SHOWN AS ROUGH OPENING SILL/HEADER DIMENSIONS. CONTRACTOR SHALL COORDINATE ACTUAL ROUGH OPENINGS WITH BOTH THE WINDOW AND DOOR ELEVATIONS, ALONG WITH THE CLADDING MANUFACTURERS' REQUIREMENTS PRIOR TO ORDER & INSTALLATION.
- CONTRACTOR SHALL PROVIDE BACKER RODS & SEALANT AROUND THE PERIMETER OF ALL WINDOWS, DOORS, OPENINGS, PENETRATIONS AND AT ALL JOINTS BETWEEN DISSIMILAR EXTERIOR FINISH/CLADDING MATERIALS, TYPICAL AT MASONRY VENEER WALLS. THE FINISHED FACE SHALL WRAP ALL CORNERS AND BE PROVIDED ON ALL VISIBLE FACES OF PILASTERS, INSETS, WING WALLS, AND RETURNS. NO UNFINISHED FACES SHALL BE EXPOSED TO VIEW.
- CONTRACTOR SHALL PROVIDE VERTICAL CONTROL JOINTS IN BRICK VENEER WALLS OVER 24'-0" LONG. SEE LOCATIONS INDICATED ON THE EXTERIOR ELEVATIONS AS 'C.J.'. COORDINATE EXACT LOCATIONS W/ ARCHITECT.
- PROVIDE EXTERIOR SIGNAGE & ATTACHMENTS AS REQUIRED BY AUTHORITY HAVING JURISDICTION. CONTRACTOR SHALL COORDINATE WITH THE REQUIREMENTS PRIOR TO CONSTRUCTION, SIZE, LOCATION AND QUANTITY OF BUILDING SIGNS, MONUMENT SIGNS AND DESIGNER / ARCHITECT / ENGINEER UNDER A SEPARATE SET OF PERMIT DOCUMENTS.
- ALL EXTERIOR CONCRETE STOODS TO SLOPE 1/4" PER FOOT MAXIMUM AND 1/8" PER FOOT MINIMUM AWAY FROM THE BUILDING.
- CONTRACTOR SHALL ELIMINATE THE RISK OF GALVANIC CORROSION BY PROVIDING ADDITIONAL COMPOSITE SHIMS, RUBBER STRIPS, GASKETS, AND/OR OTHER GAP-FILLING MATERIALS, AS REQUIRED, AT ALL LOCATIONS WHERE DISSIMILAR MATERIALS AND METALS (INCLUDING BUT NOT LIMITED TO THE EXTERIOR FINISH/CLADDING MATERIALS) ARE SHOWN TO BE FASTENED TOGETHER OR DIRECTLY ADJACENT TO EACH OTHER.
- MECHANICAL PIPES, PLUMBING VENTS, EXHAUST FANS, LOUVERS, REGISTERS AND ALL OTHER PENETRATIONS SHALL NOT PASS THROUGH EXTERIOR WALLS UNLESS SHOWN ON THESE ELEVATIONS OR DISCUSSED WITH THE OWNER AND ARCHITECT PRIOR TO INSTALLATION.

PRELIMINARY - NOT FOR CONSTRUCTION

PRINT DATE:  
22 JUNE 2023

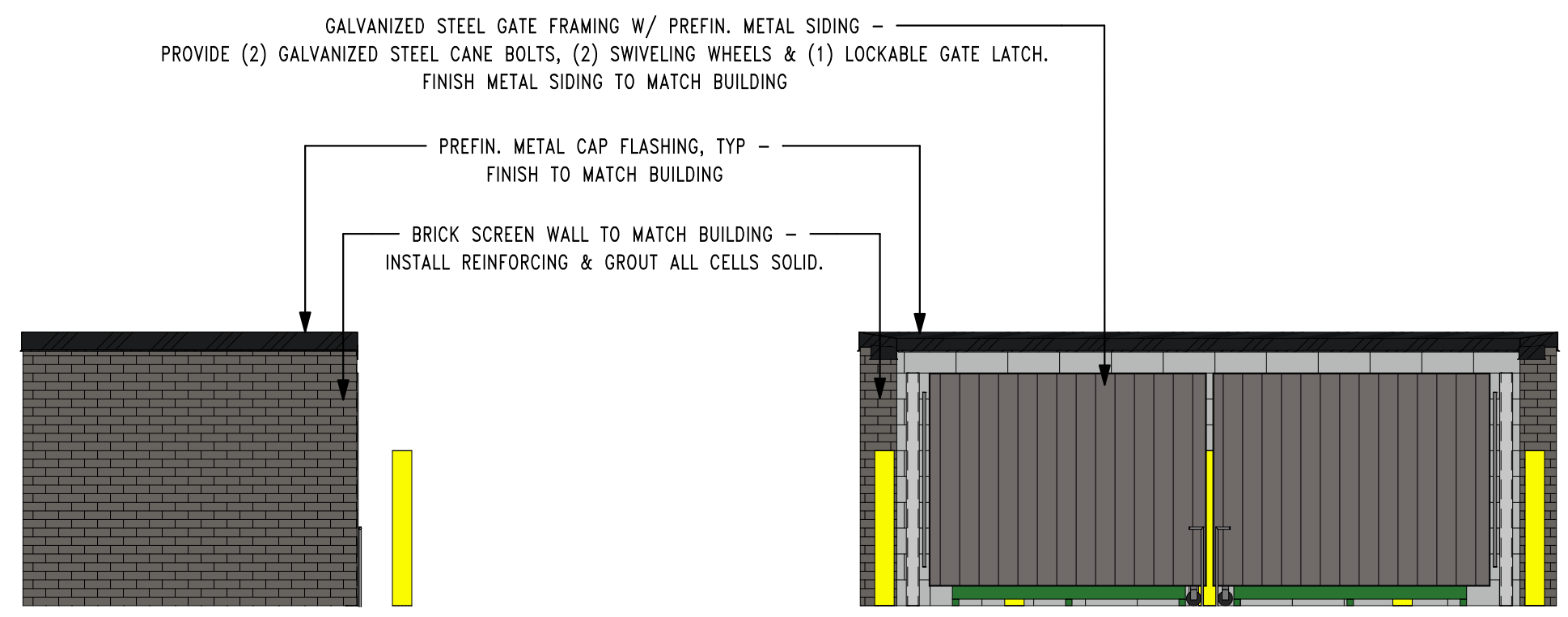
SHEET NAME:  
EXTERIOR ELEVATIONS

GREATER IOWA CREDIT UNION  
WAUKEE BRANCH  
1145 SE UNIVERSITY AVENUE  
WAUKEE, IOWA 50263

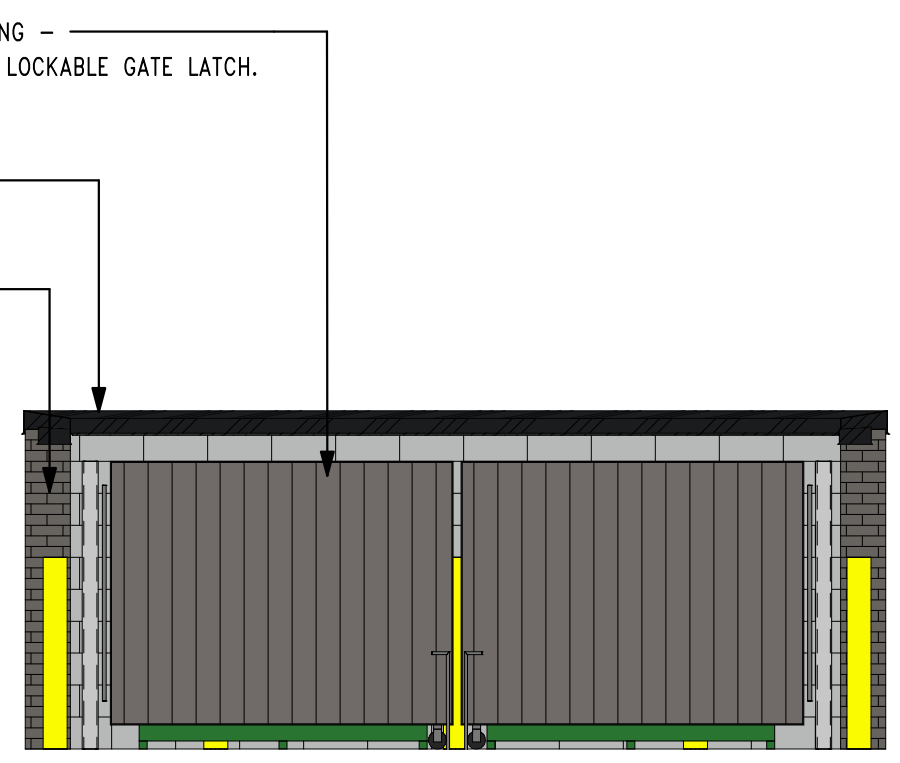
STUDIO MELEE  
139 4TH STREET  
WEST DES MOINES, IOWA 50265

THIS DOCUMENT IS THE PROPERTY OF STUDIO MELEE. IT IS TO BE USED ONLY FOR THE PROJECT AND SITE SPECIFICALLY IDENTIFIED HEREIN. IT IS NOT TO BE REPRODUCED, COPIED, OR TRANSMITTED IN ANY FORM OR BY ANY MEANS, ELECTRONIC OR MECHANICAL, INCLUDING PHOTOCOPYING, RECORDING, OR BY ANY INFORMATION STORAGE AND RETRIEVAL SYSTEM. WITHOUT THE WRITTEN PERMISSION OF STUDIO MELEE.

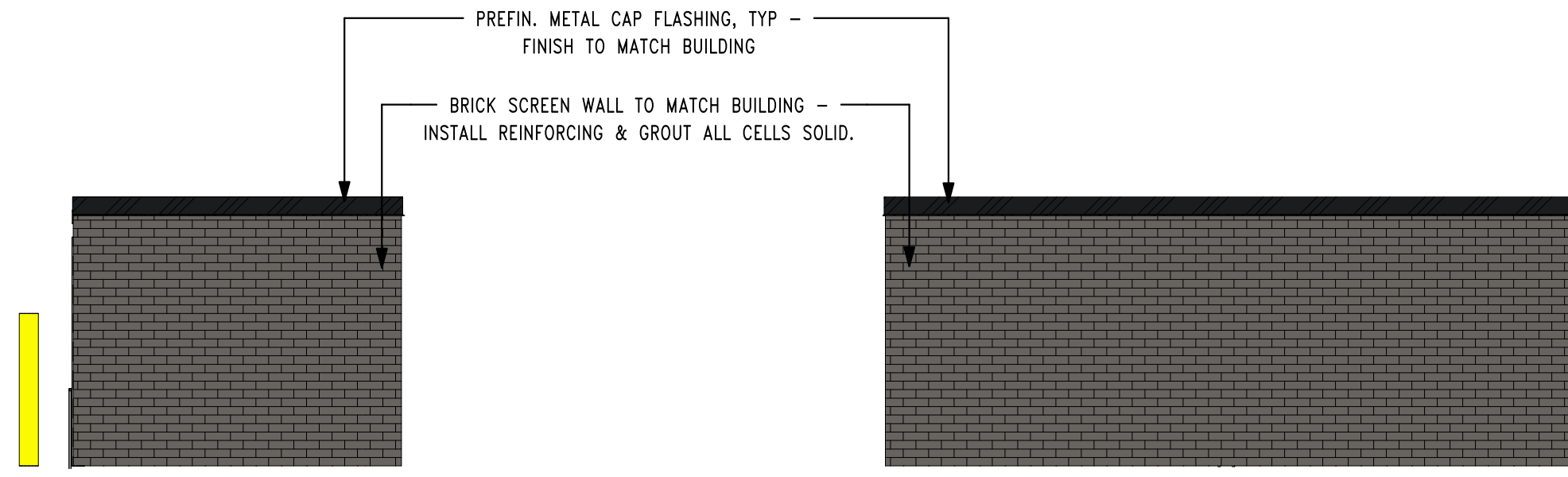
A2.1



5 EXTERIOR ELEVATION - TRASH ENCLOSURE - WEST  
1/4" = 1'-0"

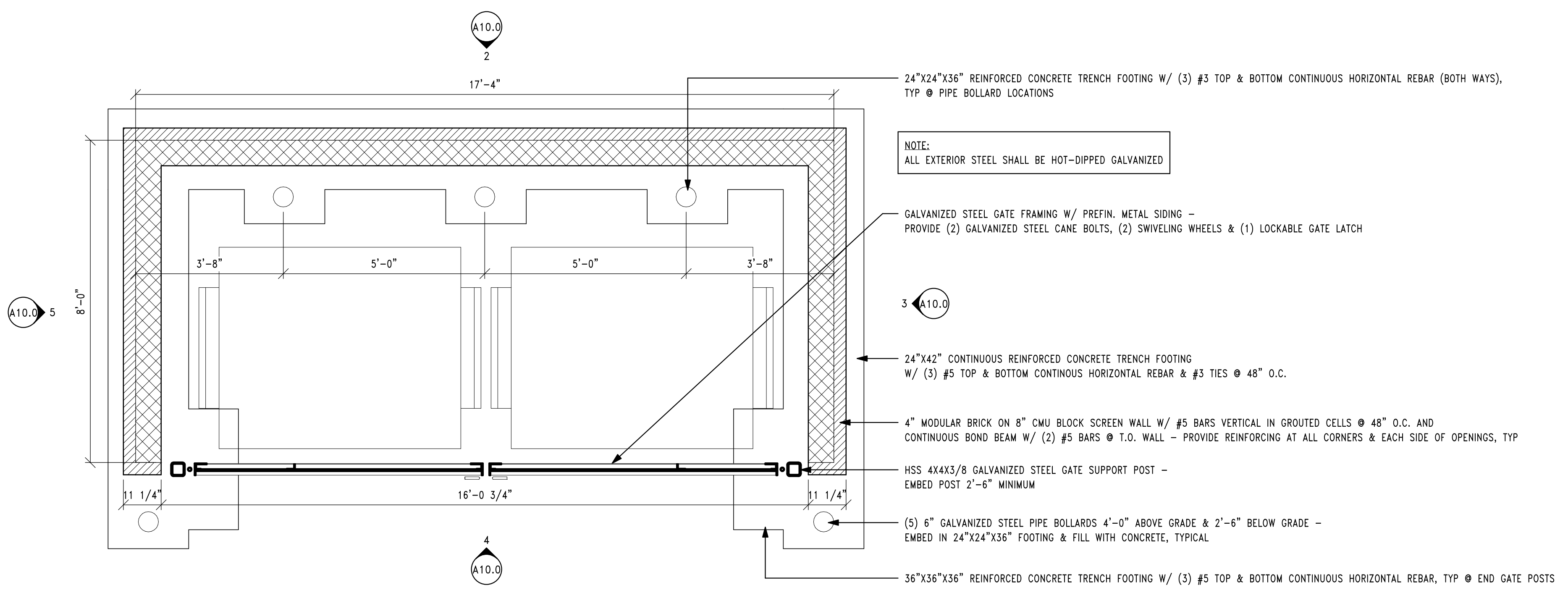


4 EXTERIOR ELEVATION - TRASH ENCLOSURE - SOUTH  
1/4" = 1'-0"



3 EXTERIOR ELEVATION - TRASH ENCLOSURE - EAST  
1/4" = 1'-0"

2 EXTERIOR ELEVATION - TRASH ENCLOSURE - NORTH  
1/4" = 1'-0"



1 ENLARGED FLOOR PLAN - TRASH ENCLOSURE  
1/2" = 1'-0"

PRELIMINARY - NOT FOR CONSTRUCTION

PRINT DATE:  
22 JUNE 2023  
SHEET NAME:  
TRASH ENCLOSURE

GREATER IOWA CREDIT UNION  
WAUKEE BRANCH  
1145 SE UNIVERSITY AVENUE  
WAUKEE, IOWA 50263

STUDIO MELEE  
139 4TH STREET  
WEST DES MOINES, IOWA 50265

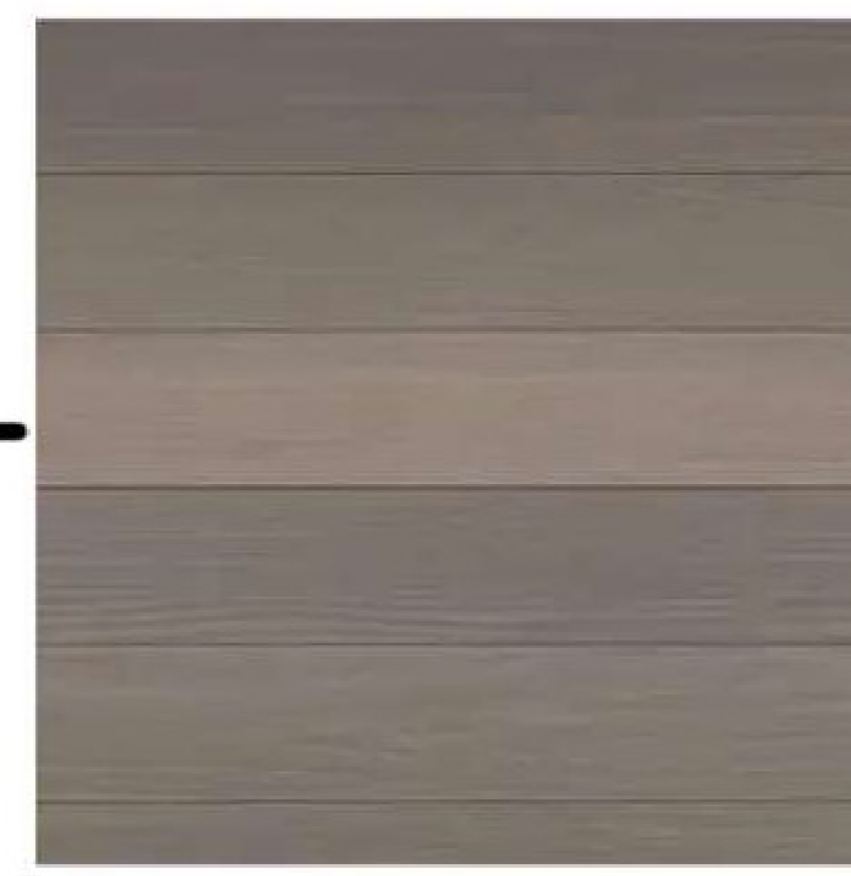
THESE DOCUMENTS ARE THE PROPERTY OF  
STUDIO MELEE. THEY ARE NOT TO BE  
REPRODUCED OR TRANSMITTED IN ANY  
FORM OR BY ANY MEANS, ELECTRONIC  
OR MECHANICAL, INCLUDING PHOTOCOPYING,  
RECORDING, OR BY ANY INFORMATION  
SYSTEMS WITHOUT THE WRITTEN  
CONSENT OF STUDIO MELEE. UNAUTHORIZED  
REPRODUCTION IS PROHIBITED.

A10.0

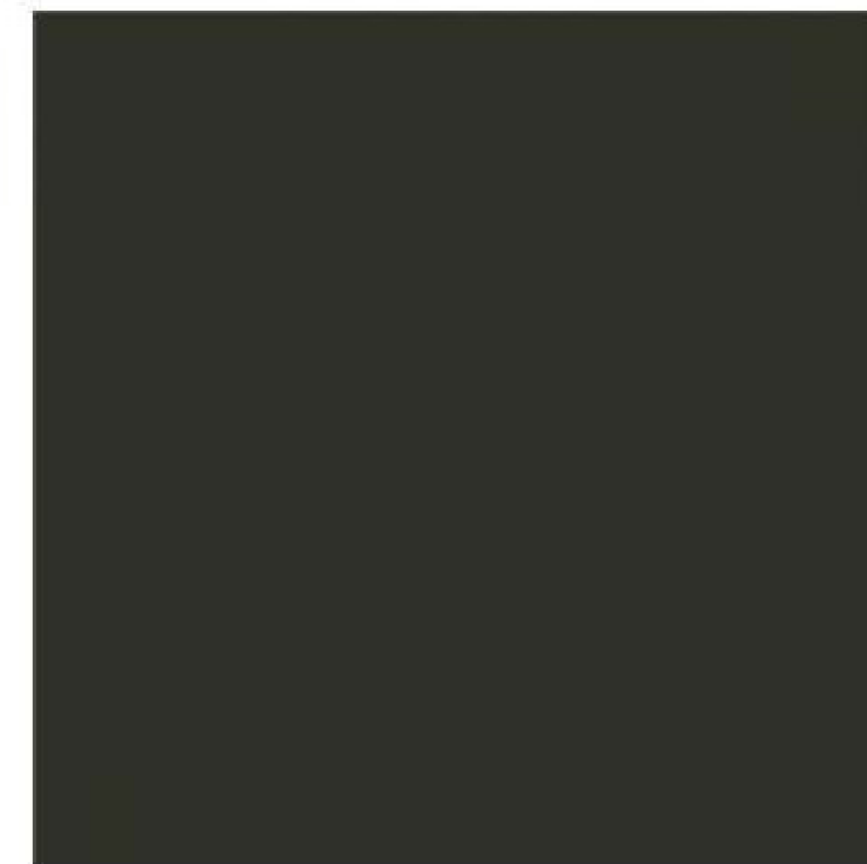


**1**  
Brick Veneer

**5,6**  
Aluminum Plank Siding, Aluminum Plank Soffit



**2**  
Stone Veneer



**7**  
Metal Trim/Fascias



**3**  
Aluminum Plank Siding (Dark)



**8**  
Storefront Windows

**4**  
Aluminum Plank Siding (Light)



# Exterior

1. Brick Veneer:  
Mfg: Glen-Gery  
Product: Ebonite Velour
2. Stone Veneer:  
Mfg: Eden Stone  
Product: Royal Chateau Tumbled
3. Aluminum Plank Siding (Dark):  
Mfg: Mac Metal Architectural  
Product: Harrywood  
Color: Smoky Quartz
4. Aluminum Plank Siding (Light):  
Mfg: Mac Metal Architectural  
Product: Harrywood  
Color: White Oak
5. Aluminum Plank Siding (Wood):  
Mfg: Mac Metal Architectural  
Product: Harrywood  
Color: Smoked Birch
6. Aluminum Plank Soffit:  
Mfg: Mac Metal Architectural  
Product: Harrywood, Vented  
Color: Smoked Birch
7. Metal Trims/Fascias/Etc:  
Kynar 500 Finish, 'Black'
8. Storefront Windows: Black Anodized  
Frames W/ Double-Pane, Clear, Argon-Filled Panes

