

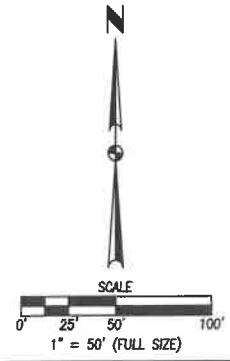
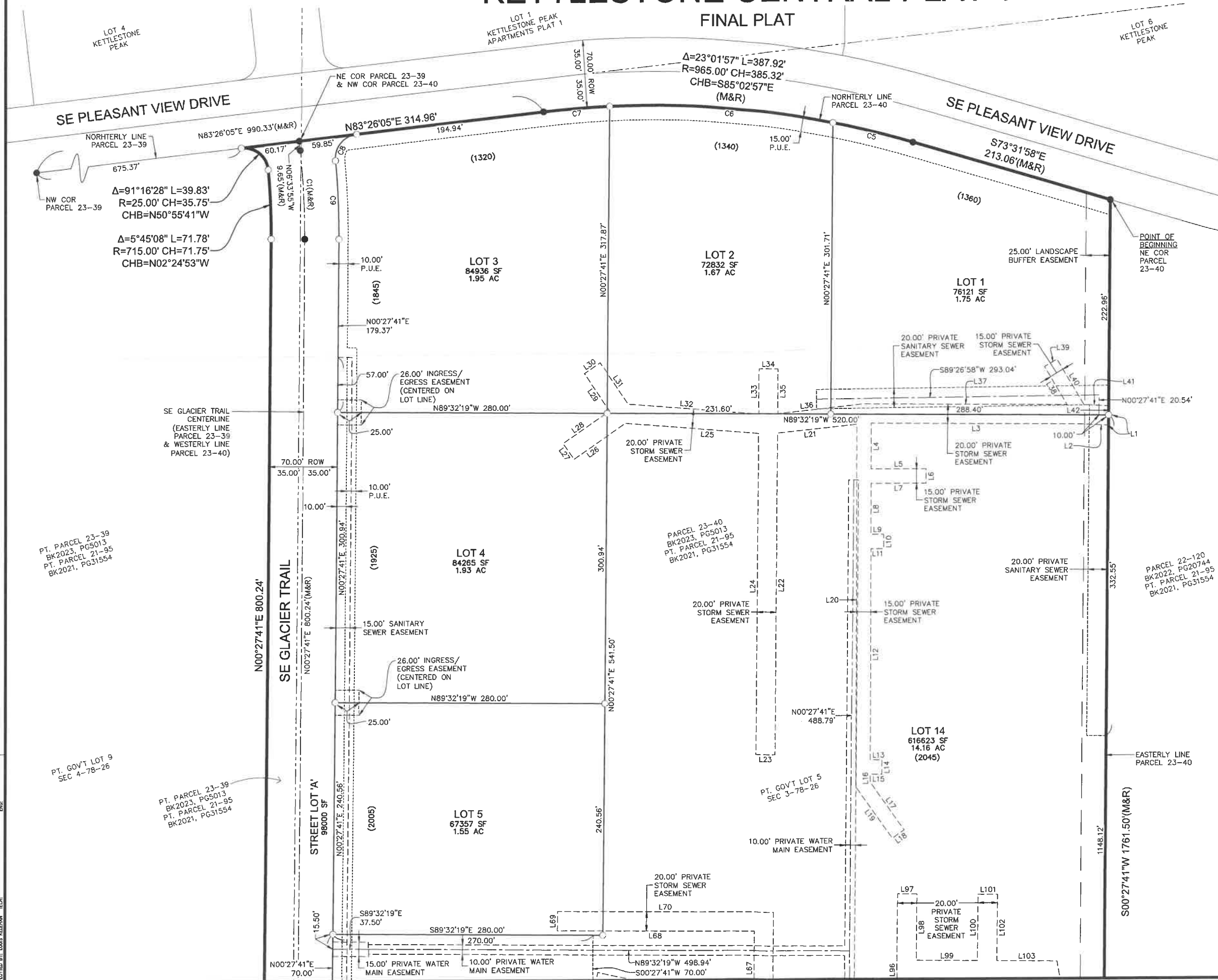


# KETTLESTONE CENTRAL PLAT 1

FINAL PLAT

## LINE DATA

LINE	BEARING	LENGTH	LINE	BEARING	LENGTH
L1	S00°27'41"W	10.53'	L61	N17°39'25"E	20.00'
L2	N87°24'03"W	28.71'	L62	S72°20'35"E	203.82'
L3	N89°32'18"W	217.04'	L63	N00°27'41"E	278.30'
L4	S00°09'48"W	47.32'	L64	N77°43'45"W	169.42'
L5	S89°50'09"E	56.94'	L65	N12°16'15"E	20.00'
L6	S00°09'51"W	15.00'	L66	S77°43'45"E	165.24'
L7	N89°50'09"W	56.94'	L67	N00°27'41"E	77.08'
L8	S00°09'48"W	52.75'	L68	N89°32'19"W	204.19'
L9	S89°32'19"E	13.39'	L69	N00°27'41"E	20.00'
L10	S00°27'41"W	15.00'	L70	S89°32'19"E	224.19'
L11	N89°32'19"W	13.31'	L71	S00°27'41"W	618.31'
L12	S00°09'48"W	218.91'	L72	S88°03'12"E	84.09'
L13	S89°32'19"E	12.22'	L73	N00°27'41"E	377.24'
L14	S00°27'41"W	15.00'	L74	N41°20'06"E	60.22'
L15	N89°32'19"W	12.14'	L75	S48°39'54"E	15.00'
L16	S00°09'48"W	8.21'	L76	S41°20'06"W	54.64'
L17	S35°25'18"E	61.00'	L77	S00°27'41"W	263.15'
L18	S54°34'42"W	15.00'	L78	S89°32'19"E	12.13'
L19	N35°25'18"W	65.81'	L79	S00°27'41"W	15.00'
L20	N00°09'48"E	376.15'	L80	N89°32'19"W	12.13'
L21	S83°51'11"W	82.74'	L81	S00°27'41"W	37.60'
L22	S00°27'41"W	333.41'	L82	S89°32'19"E	55.34'
L23	N89°32'19"W	20.00'	L83	S00°27'41"W	15.00'
L24	N00°27'41"E	333.02'	L84	N89°32'19"W	55.34'
L25	N85°21'23"W	138.05'	L85	S00°27'41"W	41.51'
L26	S55°27'41"W	65.42'	L86	S86°20'44"E	216.04'
L27	N34°32'19"W	20.00'	L87	N00°17'38"W	392.91'
L28	N55°27'41"E	59.04'	L88	N10°17'34"W	173.61'
L29	N34°09'14"W	46.87'	L89	N89°30'07"W	45.24'
L30	N55°50'46"E	20.00'	L90	S00°27'41"W	68.91'
L31	S34°09'14"E	52.01'	L91	N89°32'19"W	20.00'
L32	S85°21'23"E	135.35'	L92	N00°27'41"E	68.92'
L33	N00°27'41"E	46.74'	L93	N89°30'07"W	63.02'
L34	S89°32'19"E	20.00'	L94	S00°27'41"W	68.96'
L35	S00°27'41"W	46.27'	L95	N89°32'19"W	20.00'
L36	N83°51'11"E	89.65'	L96	N00°27'41"E	157.93'
L37	S89°32'18"E	210.50'	L97	S89°32'19"E	20.00'
L38	N30°49'57"W	45.87'	L98	S00°27'41"W	68.97'
L39	N58°10'03"E	15.00'	L99	S89°30'07"E	63.02'
L40	S30°49'57"E	55.10'	L100	N00°27'41"E	69.01'
L41	S87°24'03"E	25.76'	L101	S89°32'19"E	20.00'
L42	S00°27'41"W	9.48'	L102	S00°27'41"W	69.03'
L43	S89°32'19"E	386.82'	L103	S89°30'07"E	61.81'
L44	S00°28'14"W	474.72'	L104	S10°17'34"E	191.90'
L45	N89°31'46"W	20.00'	L105	S00°17'38"E	405.39'
L46	N00°28'14"E	462.22'	L106	S00°06'43"E	370.56'
L47	N89°32'19"W	371.02'	L107	S89°32'19"E	4.30'
L48	S00°27'41"W	48.67'	L108	S00°27'41"W	7.50'
L49	N89°32'19"W	20.00'			
L50	N00°27'41"E	58.45'			
L51	N00°06'43"W	371.21'			
L52	N86°20'44"W	224.19'			
L53	N88°03'12"W	99.61'			
L54	N89°42'30"W	147.74'			
L55	N74°51'42"W	87.76'			
L56	N15°08'18"E	20.00'			
L57	S74°51'42"E	85.15'			
L58	S89°42'30"E	133.61'			
L59	N00°27'41"E	201.38'			
L60	N72°20'35"W	210.01'			



**2 / 4**

**KETTLESTONE CENTRAL PLAT 1**  
FINAL PLAT

4121 NW URBANDALE DRIVE  
URBANDALE, IA 50322  
PHONE: (515) 369-4400

WAUKEE, IOWA

DATE: 09/20/23  
09/15/23  
08/04/23

REVISIONS: SIGNED SUBMITTAL, SECOND SUBMITTAL, FIRST SUBMITTAL

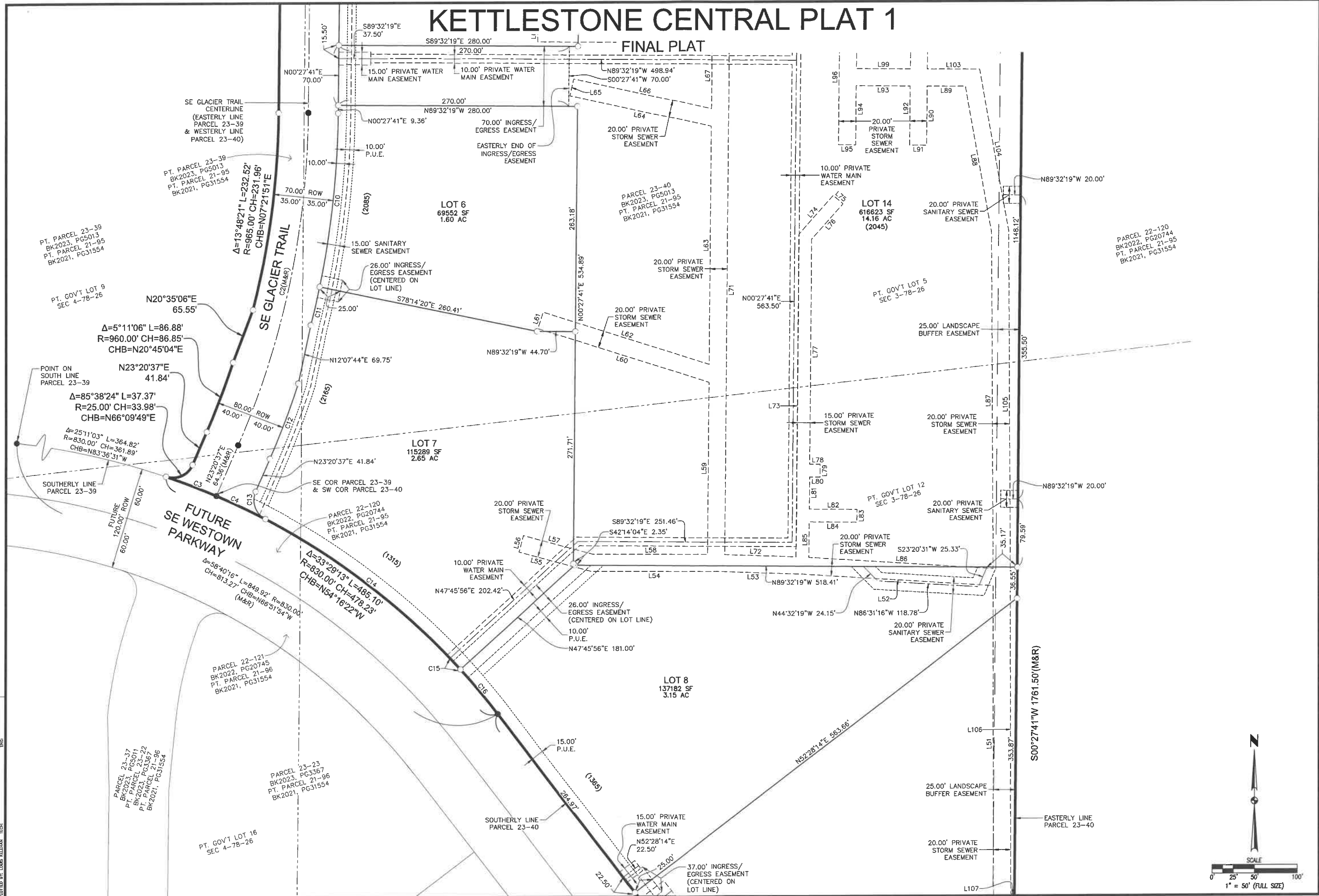
ENGINEER: REVIEW: TECH: ENGINEER: REVIEW:

2302.086

FILE: H:\2023\2302086\2302086-FINAL PLAT.DWG  
DATE PLOTTED: 9/20/2023 1:04 PM  
PLOTTER: HP  
SCALE: AS SHOWN

# KETTLESTONE CENTRAL PLAT 1

FINAL PLAT



DATE	REVISIONS
09/20/23	SIGNED SUBMITTAL
09/15/23	SECOND SUBMITTAL
08/04/23	FIRST SUBMITTAL

4121 NW URBANDALE DRIVE  
 URBANDALE, IA 50322  
 PHONE: (515) 369-4400



CIVIL DESIGN ADVANTAGE  
 WAUKEE, IOWA

**KETTLESTONE CENTRAL PLAT 1**  
**FINAL PLAT**

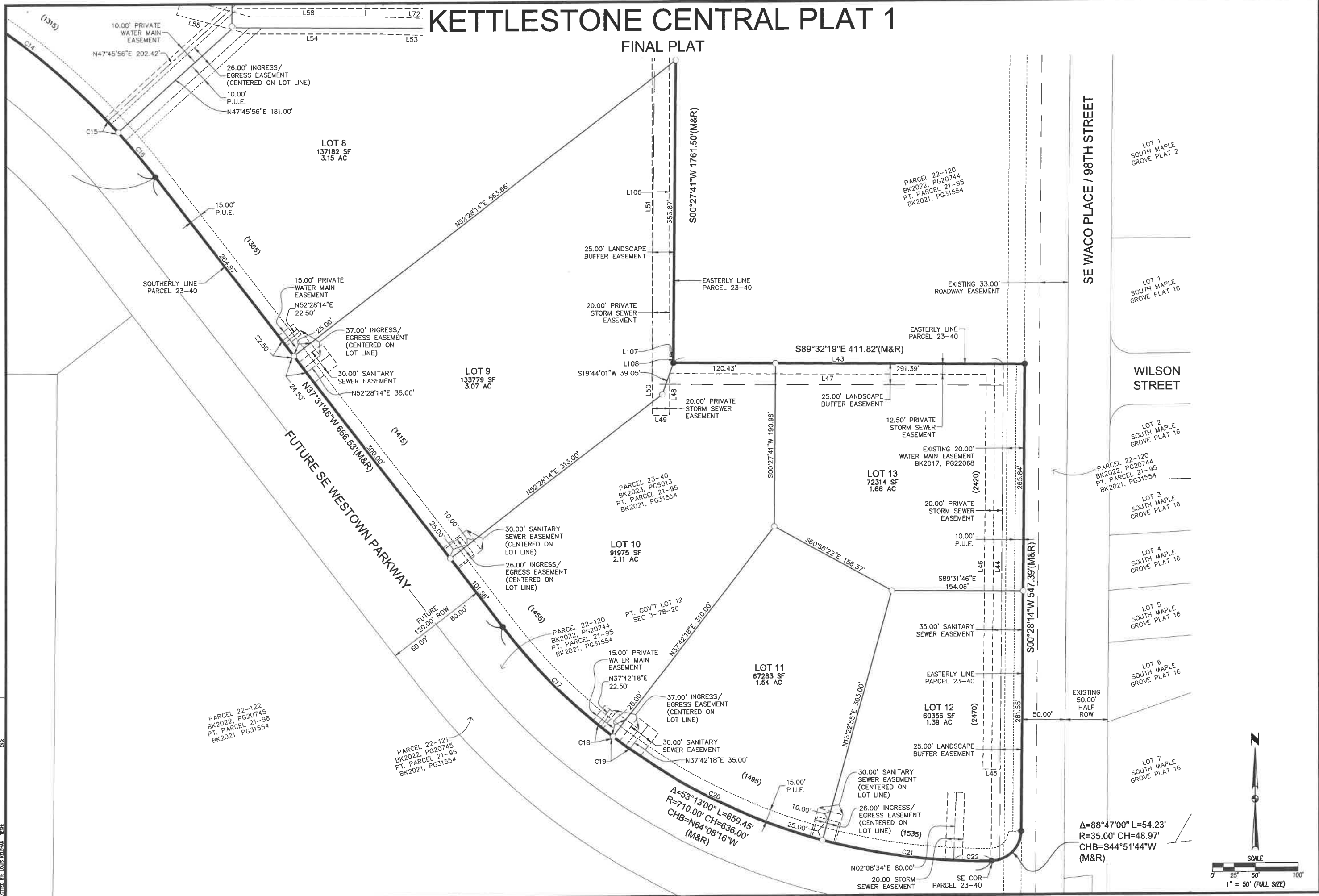
3 / 4

2302.086

FILE: H:\2023\2302086\2302086-FINAL PLAT.DWG  
 PLOT DATE: 9/20/23 1:04 PM  
 PLOT BY: J. GILMAN

# KETTLESTONE CENTRAL PLAT 1

FINAL PLAT



FILE: H:\2023\2302086\000\2302086-FINAL PLAT.DWG  
 DATE PLOTTED: 9/29/2023 1:04 PM  
 COMMENT: EIR  
 PLOTTED BY: LINDS REISMAN, TECH

PARCEL 22-122  
 BK2022, PG20745  
 PT. PARCEL 21-96  
 BK2021, PG31554

PARCEL 22-121  
 BK2022, PG20745  
 PT. PARCEL 21-96  
 BK2021, PG31554

PARCEL 22-120  
 BK2022, PG20744  
 PT. PARCEL 21-95  
 BK2021, PG31554

PARCEL 23-40  
 BK2023, PG5013  
 PT. PARCEL 21-95  
 BK2021, PG31554

PARCEL 22-120  
 BK2022, PG20744  
 PT. PARCEL 21-95  
 BK2021, PG31554

PARCEL 22-120  
 BK2022, PG20744  
 PT. PARCEL 21-95  
 BK2021, PG31554

$\Delta=53^{\circ}13'00''$  L=659.45'  
 $R=710.00'$  CH=636.00'  
 $CHB=N64^{\circ}08'16''W$   
 (M&R)

$\Delta=88^{\circ}47'00''$  L=54.23'  
 $R=35.00'$  CH=48.97'  
 $CHB=S44^{\circ}51'44''W$   
 (M&R)



DATE	REVISIONS
09/20/23 <td>SIGNED SUBMITTAL</td>	SIGNED SUBMITTAL
09/15/23 <td>SECOND SUBMITTAL</td>	SECOND SUBMITTAL
08/04/23 <td>FIRST SUBMITTAL</td>	FIRST SUBMITTAL

4121 NW URBANDALE DRIVE  
 URBANDALE, IA 50322  
 PHONE: (515) 369-4400

**ESA**  
 CIVIL DESIGN ADVANTAGE

WAUKEE, IOWA

**KETTLESTONE CENTRAL PLAT 1**  
**FINAL PLAT**

4 4

2302.086