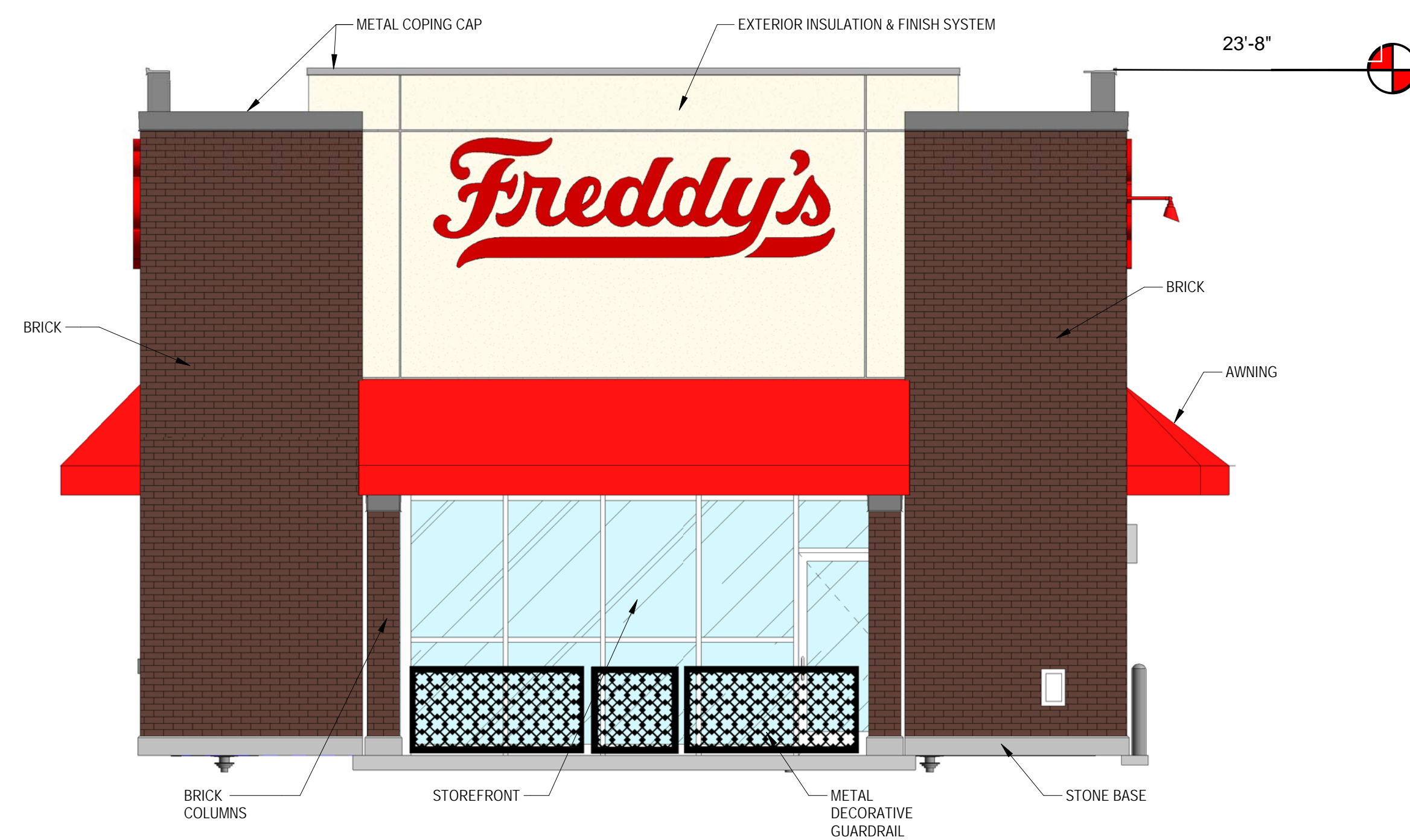


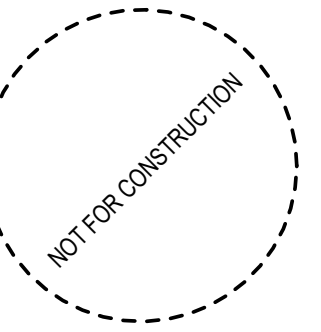
1 NORTH ELEVATION



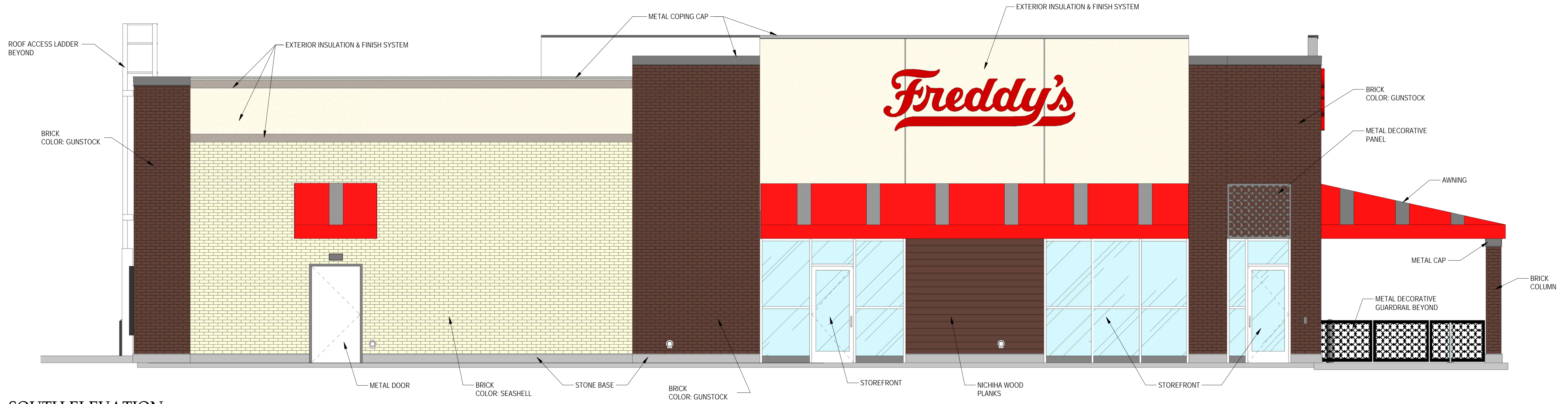
2 EAST ELEVATION

MATERIAL COMPOSITION					
MATERIAL	NORTH	EAST	SOUTH	WEST	TOTAL
BRICK	1,285 SF (67%)	340 SF (39%)	888 SF (46%)	554 SF (78%)	3,067 SF (57%)
E.I.F.S.	421 SF (22%)	201 SF (23%)	470 SF (25%)	119 SF (17%)	1,211 SF (22%)
METALS	64 SF (3%)	142 SF (17%)	203 SF (11%)	10 SF (2%)	419 SF (8%)
STOREFRONT	88 SF (5%)	169 SF (20%)	232 SF (12%)		489 SF (9%)
STONE BASE	58 SF (3%)	11 SF (1%)	38 SF (2%)	23 SF (3%)	130 SF (2%)
NICHIHA WALL PANELS			83 SF (4%)		83 SF (2%)
TOTAL	1,924 SF	863 SF	1,913 SF	706 SF	

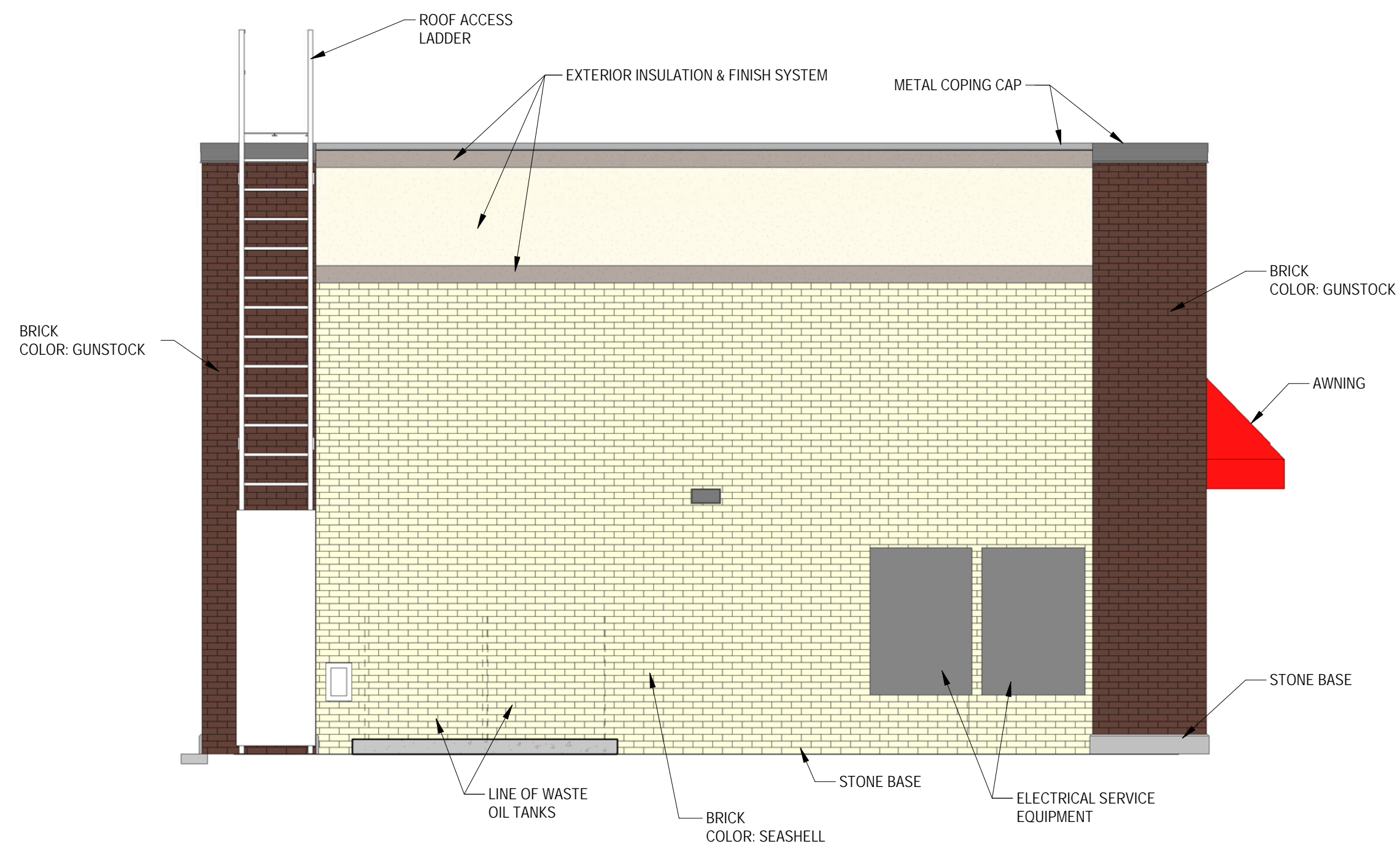
MATERIAL LEGEND



DESCRIPTION	DATE
PROJECT NO:	23234
STORE NO:	XXXX
DATE:	10.06.2023
DRAWN BY:	Author
CHECKED BY:	Checker



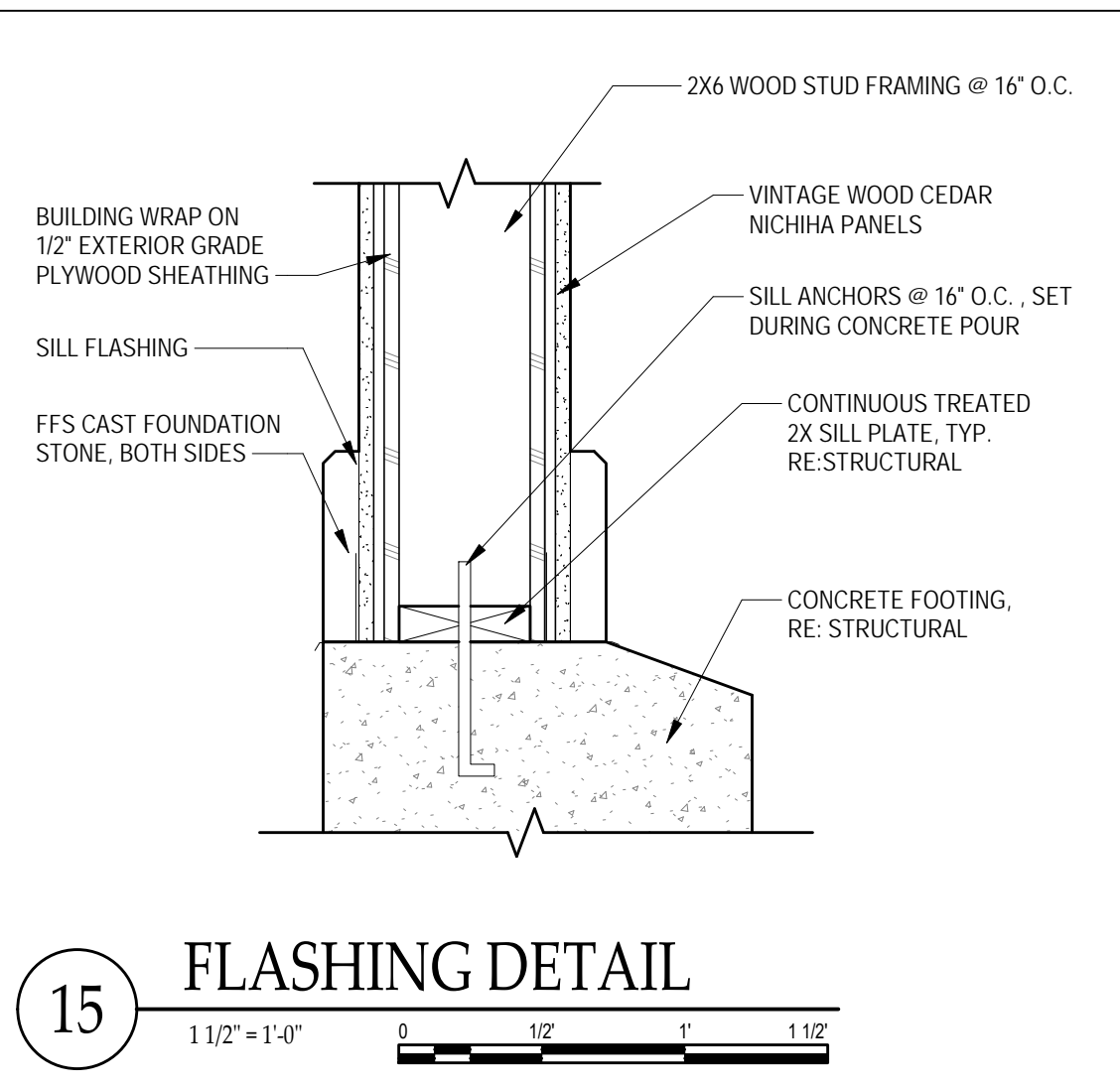
1 SOUTH ELEVATION



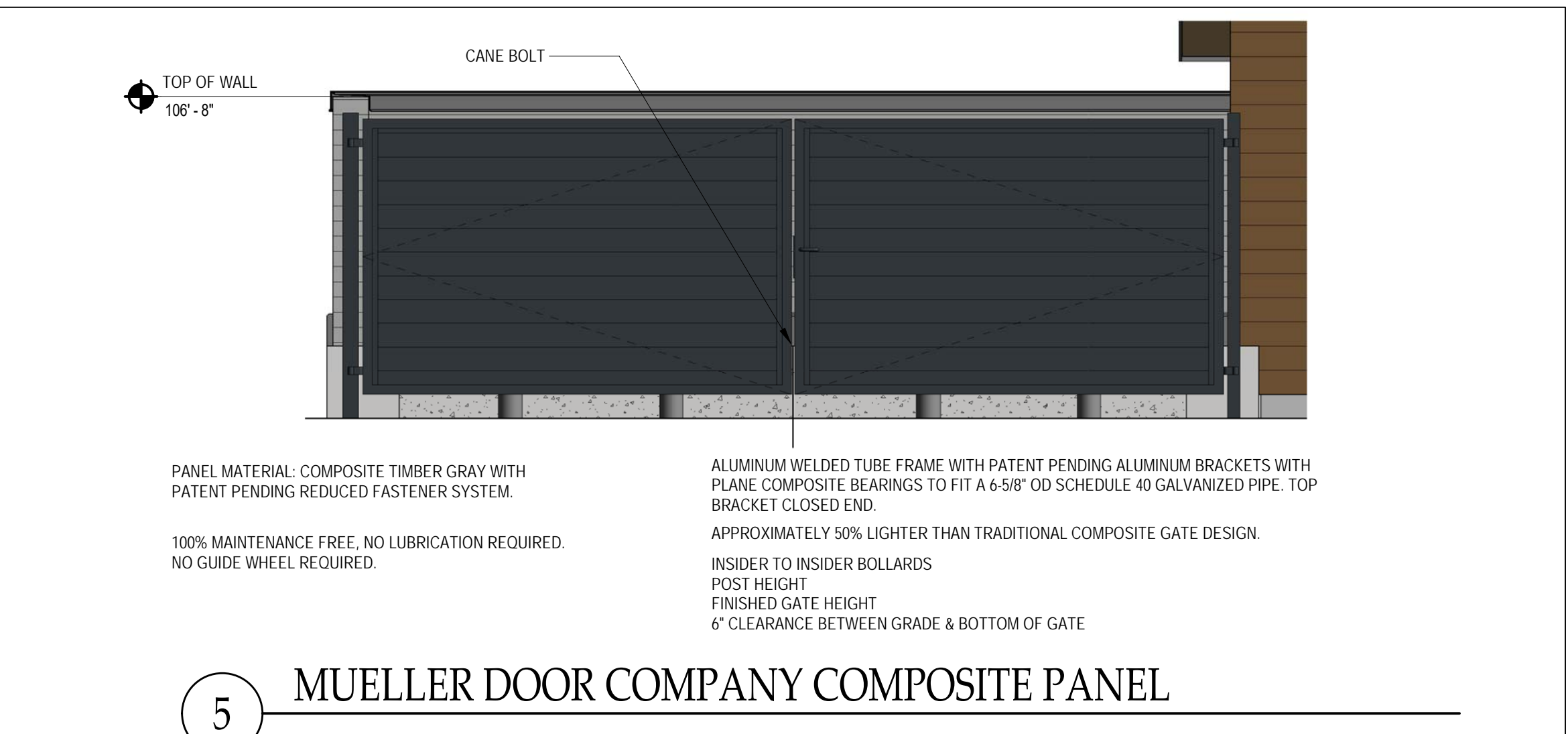
2 WEST ELEVATION

MATERIAL COMPOSITION					
MATERIAL	NORTH	EAST	SOUTH	WEST	TOTAL
BRICK	1,285 SF (67%)	340 SF (39%)	888 SF (46%)	554 SF (78%)	3,067 SF (57%)
E.I.F.S.	421 SF (22%)	201 SF (23%)	470 SF (25%)	119 SF (17%)	1,211 SF (22%)
METALS	64 SF (3%)	142 SF (17%)	203 SF (11%)	10 SF (2%)	419 SF (8%)
STOREFRONT	88 SF (5%)	169 SF (20%)	232 SF (12%)		489 SF (9%)
STONE BASE	58 SF (3%)	11 SF (1%)	38 SF (2%)	23 SF (3%)	130 SF (2%)
NICHIIA WALL PANELS			83 SF (4%)		83 SF (2%)
TOTAL	1,924 SF	863 SF	1,913 SF	706 SF	

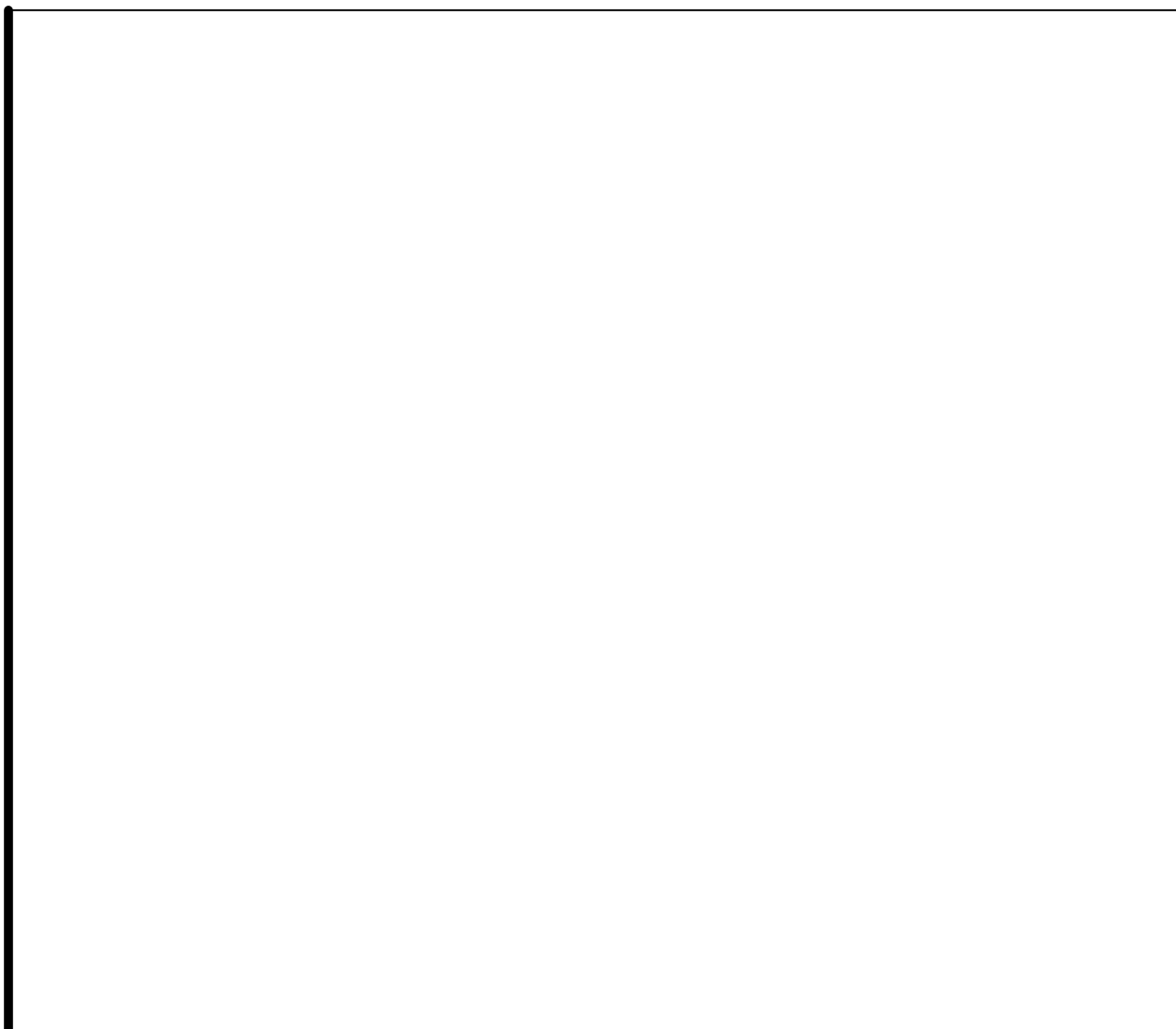
MATERIAL LEGEND	
	DRYVIT 386 A Pure Cream
	DRYVIT 614 Smoke Signal
	MARION CERAMICS 410 Gunstock Brown
	MARION CERAMICS 710 Seashell
	NICHIIA VINTAGEWOOD CEDAR



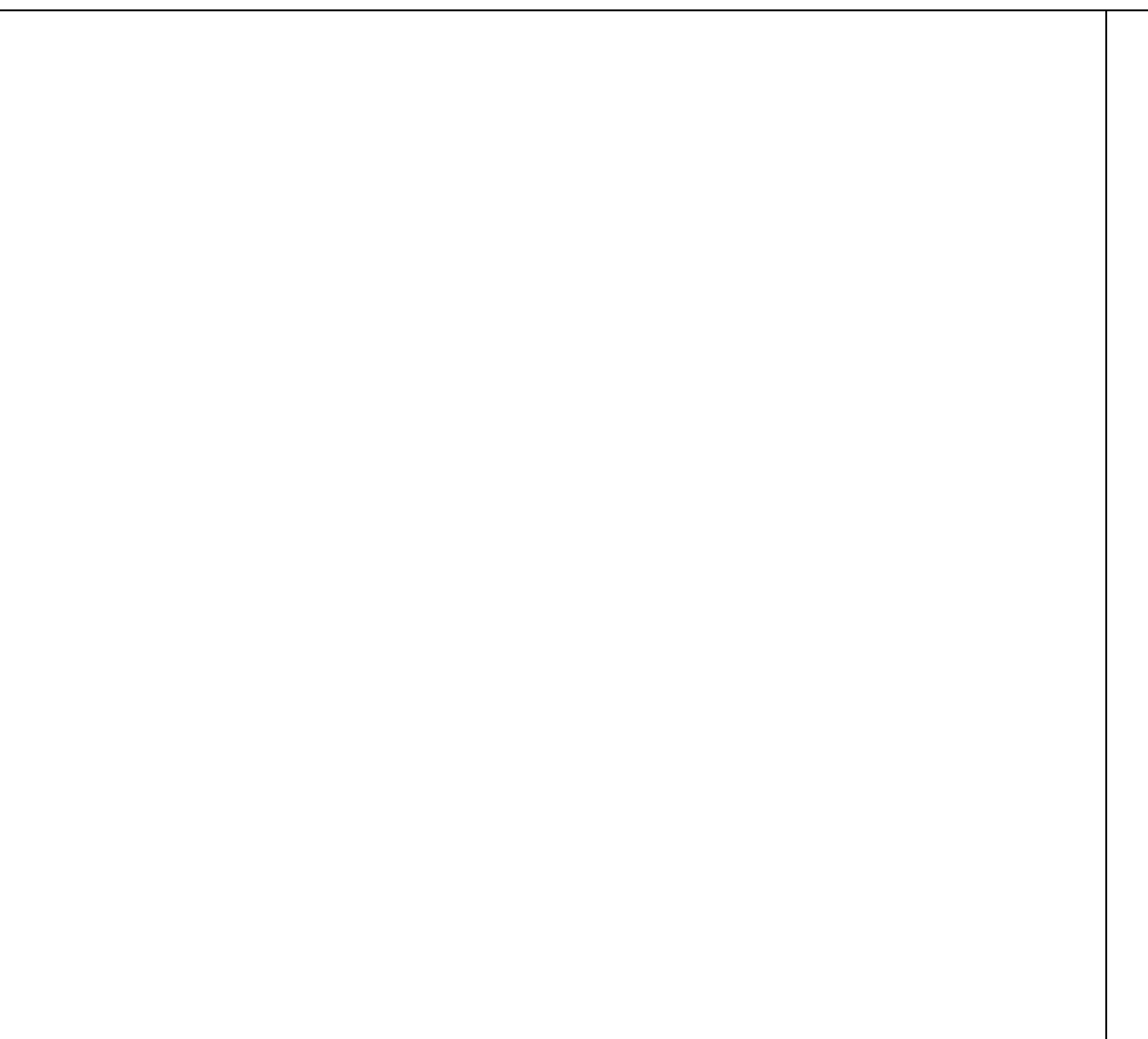
15 FLASHING DETAIL
 1 1/2" = 1'-0"



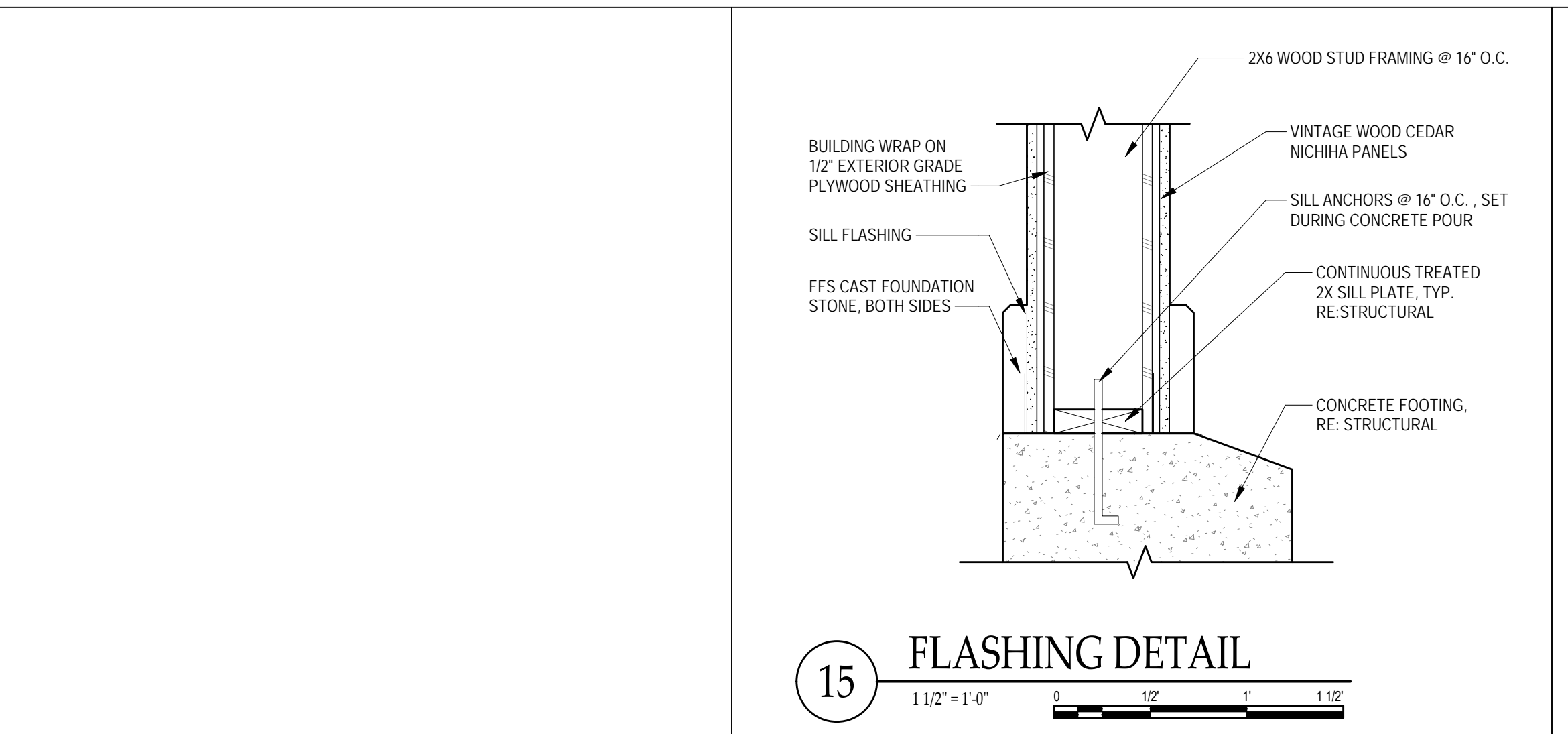
5 MUELLER DOOR COMPANY COMPOSITE PANEL
 1 1/2" = 1'-0"



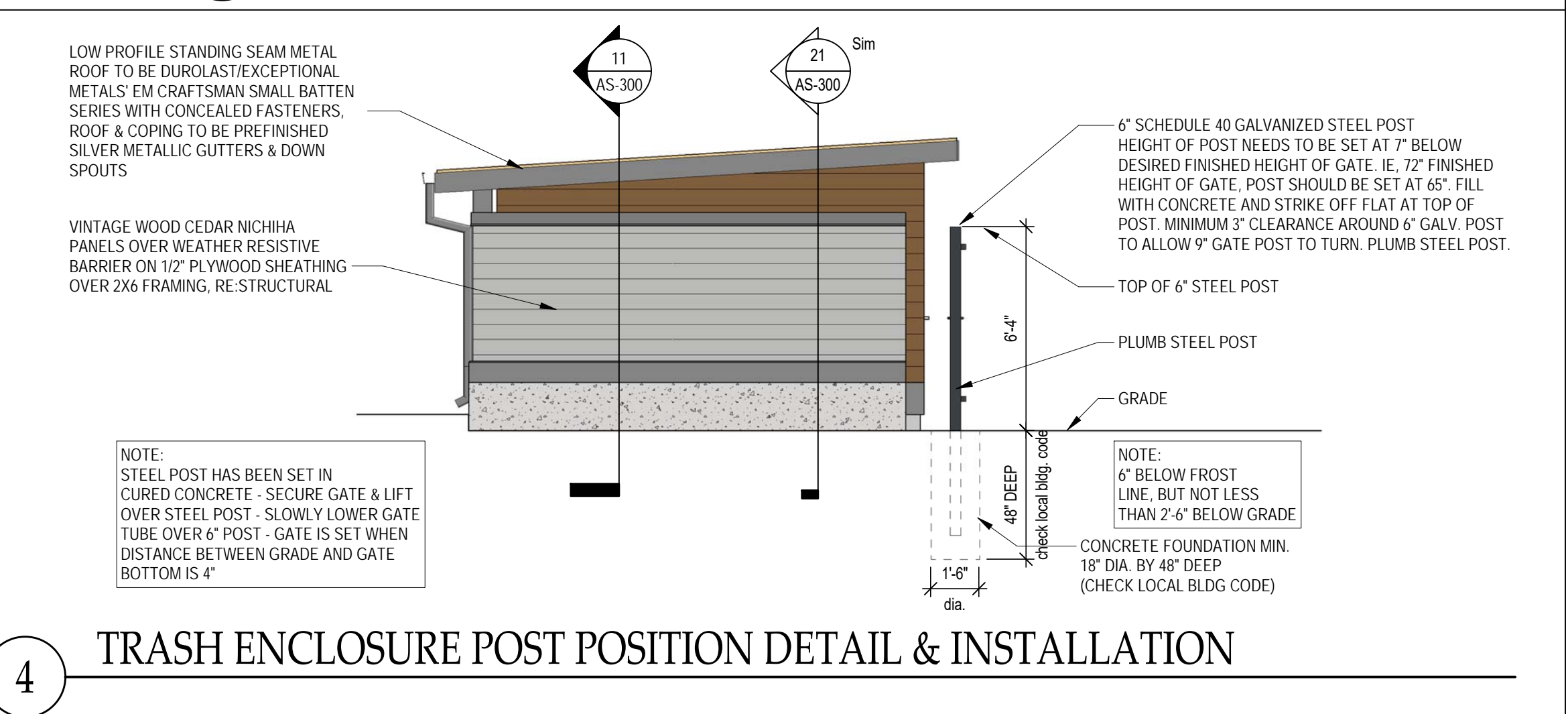
29 ENLARGED SOFFIT & GUTTER DTL.
 1 1/2" = 1'-0"



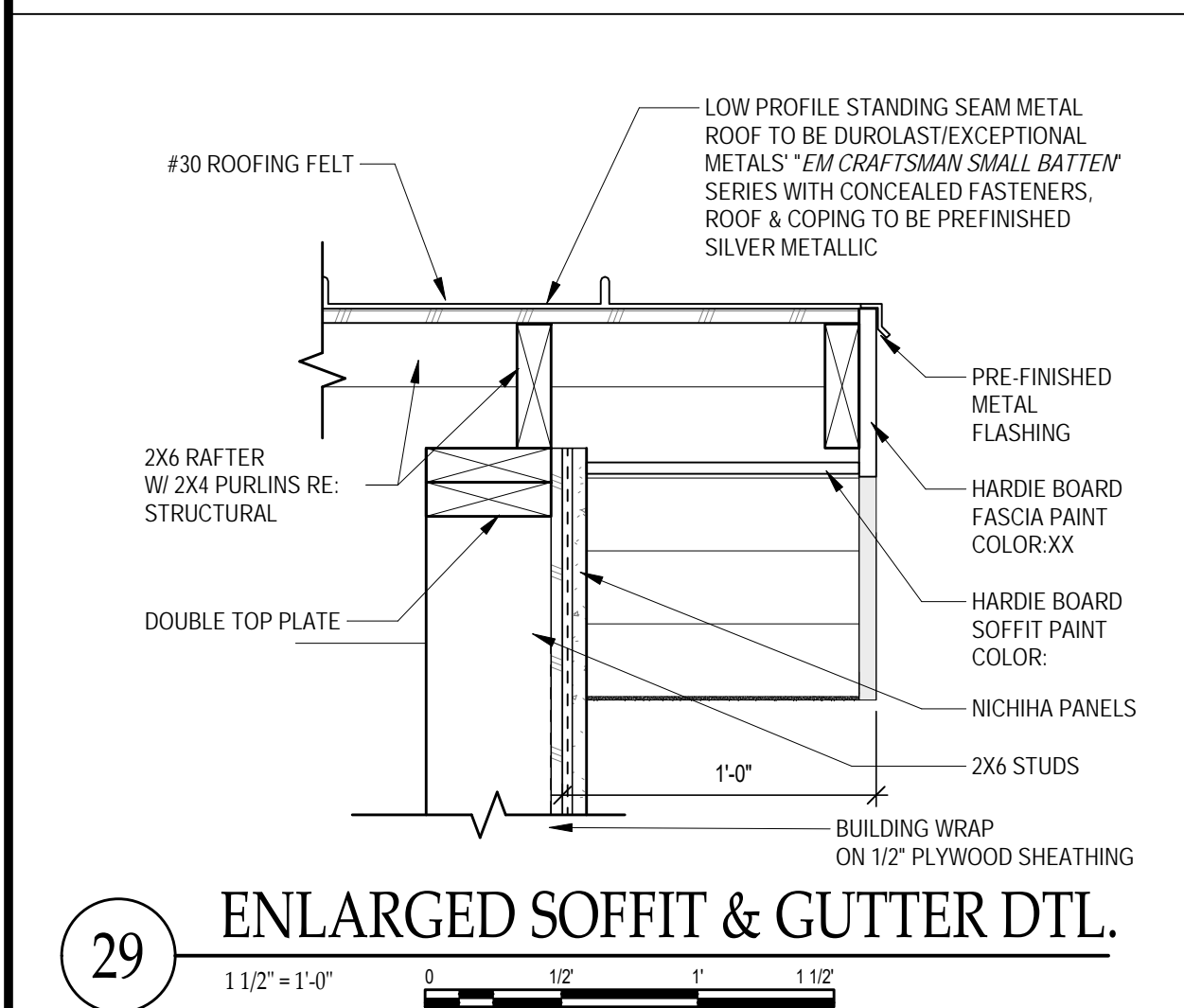
24 FOOTING DETAIL
 1 1/2" = 1'-0"



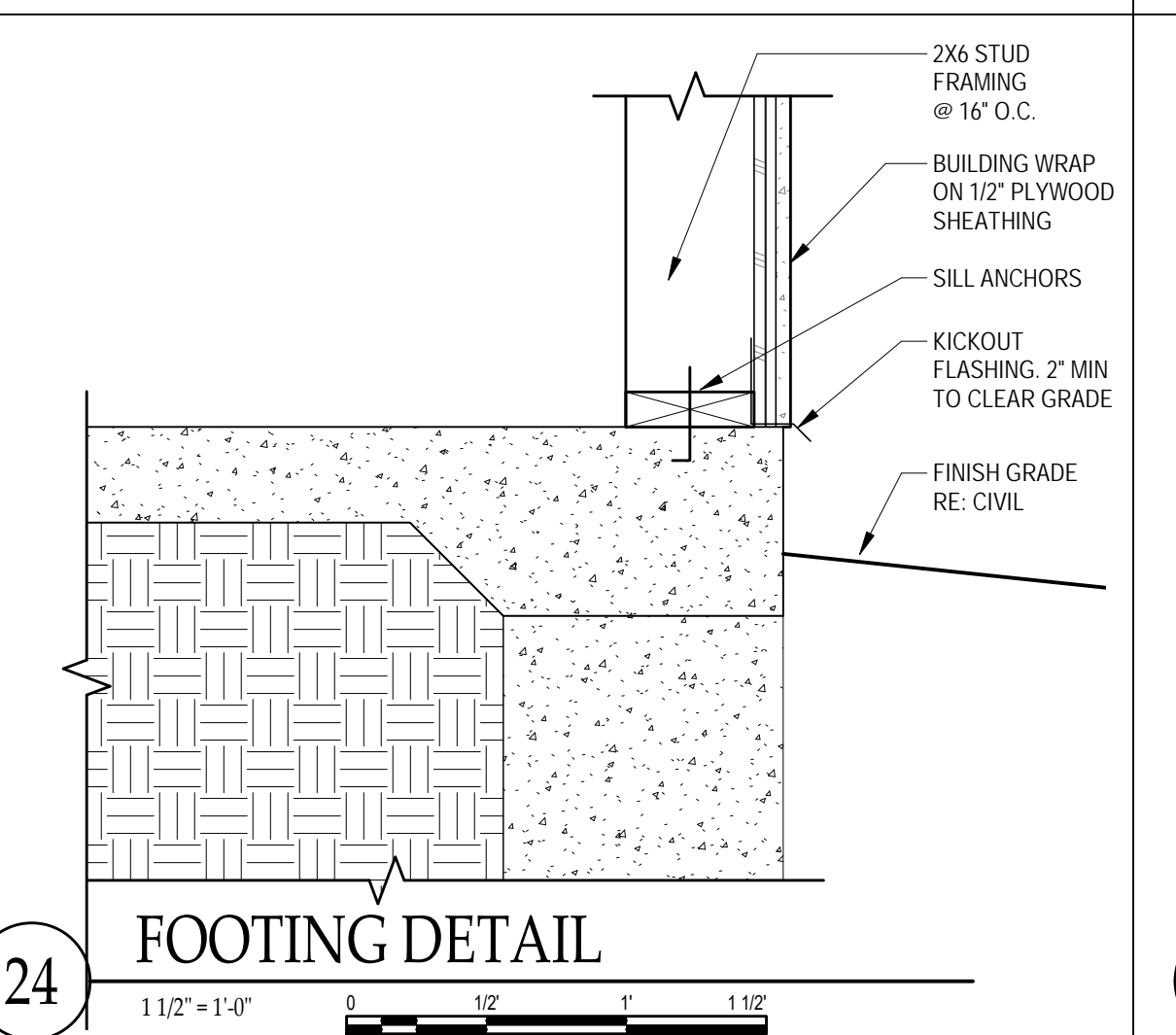
19 TRASH ENCLOSURE FRONT ELEVATION
 1 1/2" = 1'-0"



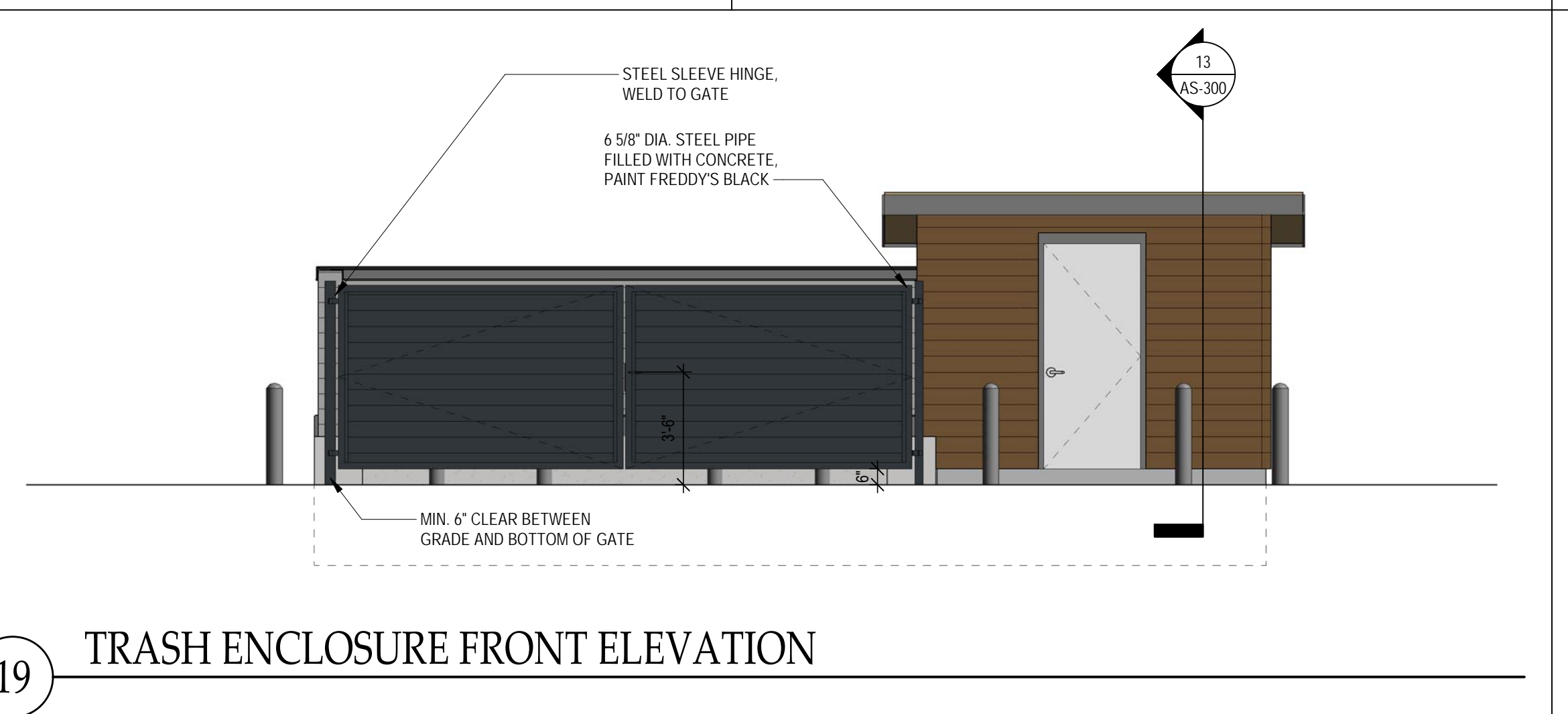
4 TRASH ENCLOSURE POST POSITION DETAIL & INSTALLATION
 1 1/2" = 1'-0"



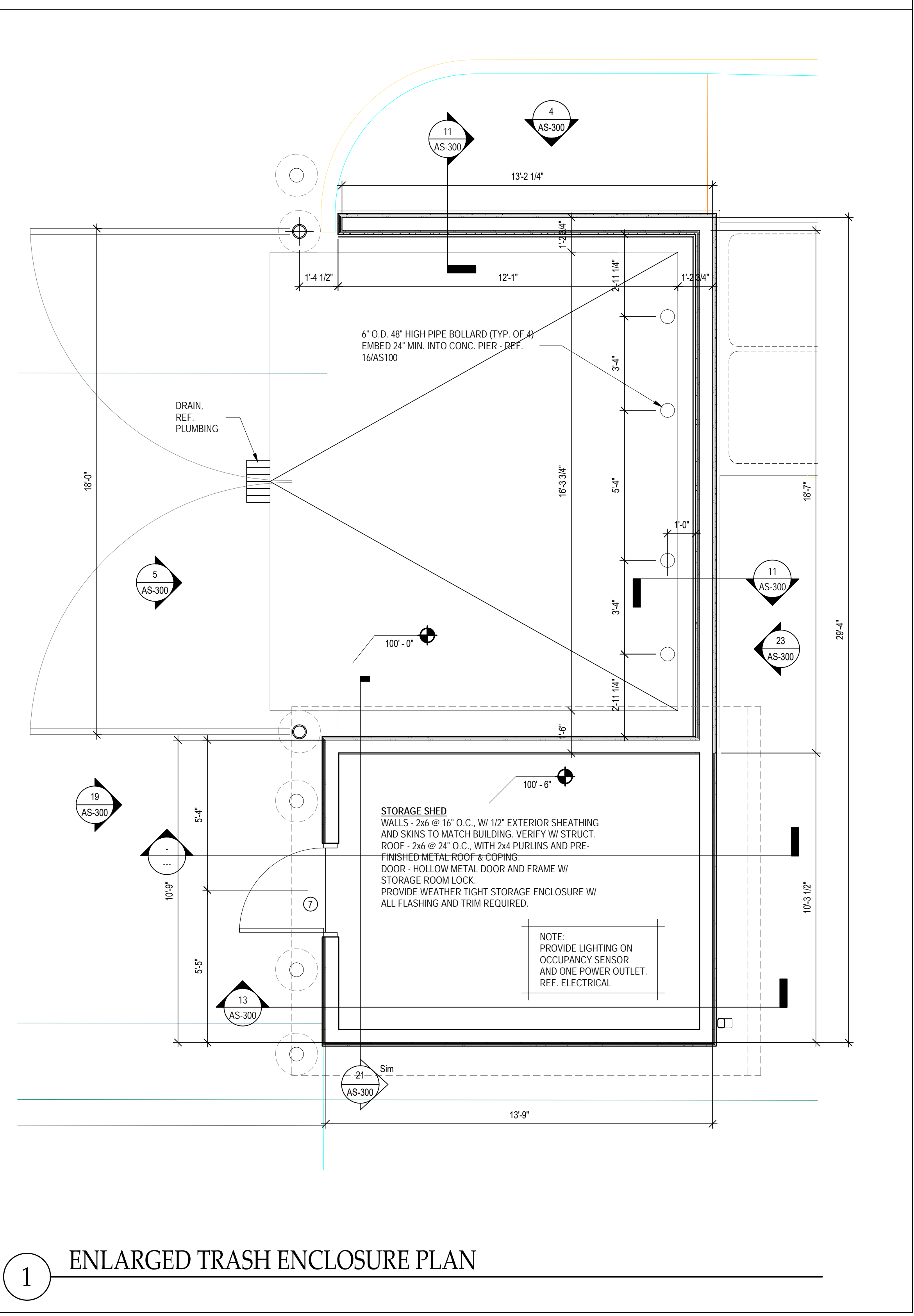
27 ENLARGED SOFFIT & GUTTER DTL.
 1 1/2" = 1'-0"



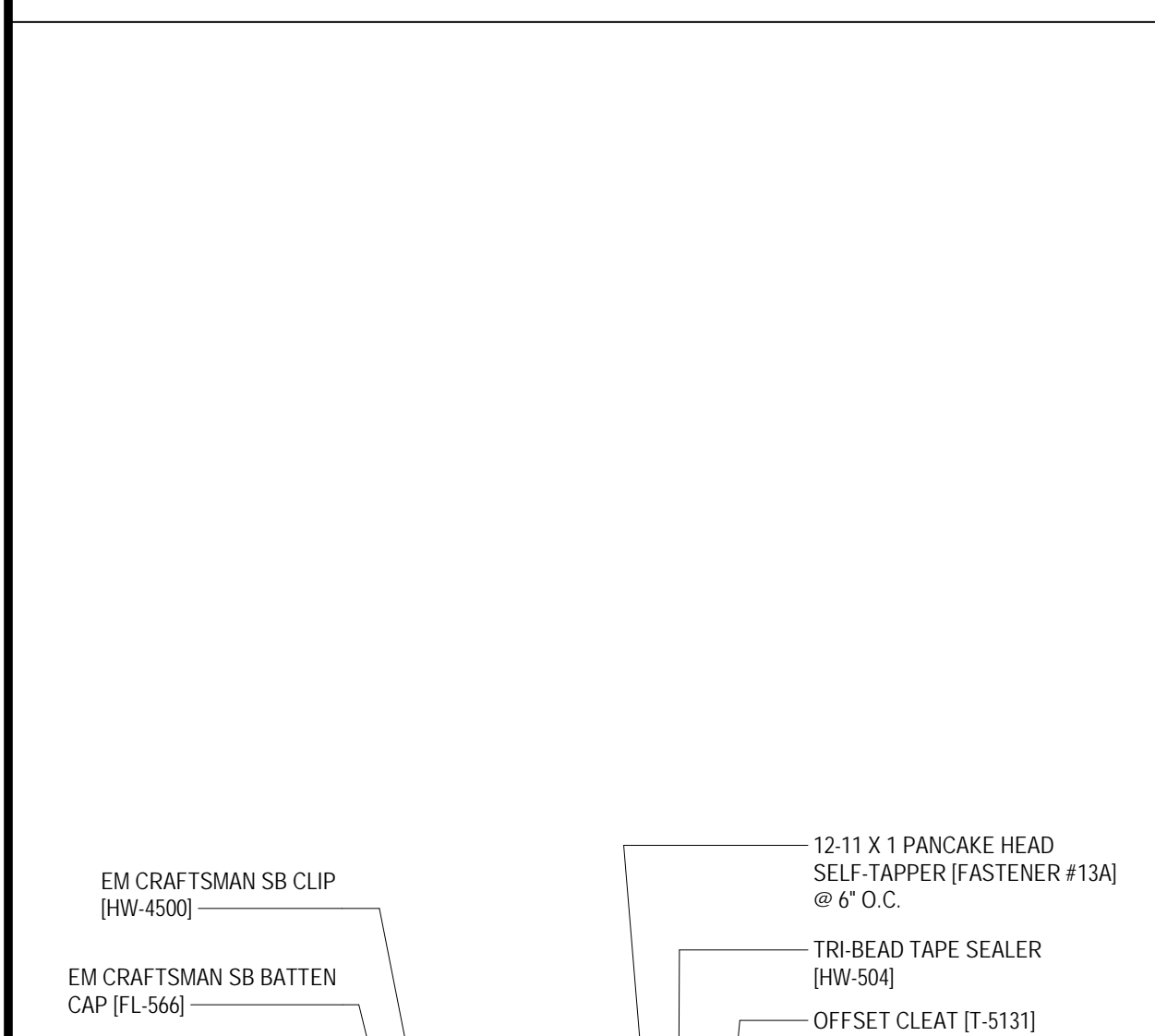
23 TRASH ENCLOSURE REAR ELEVATION
 1/4" = 1'-0"



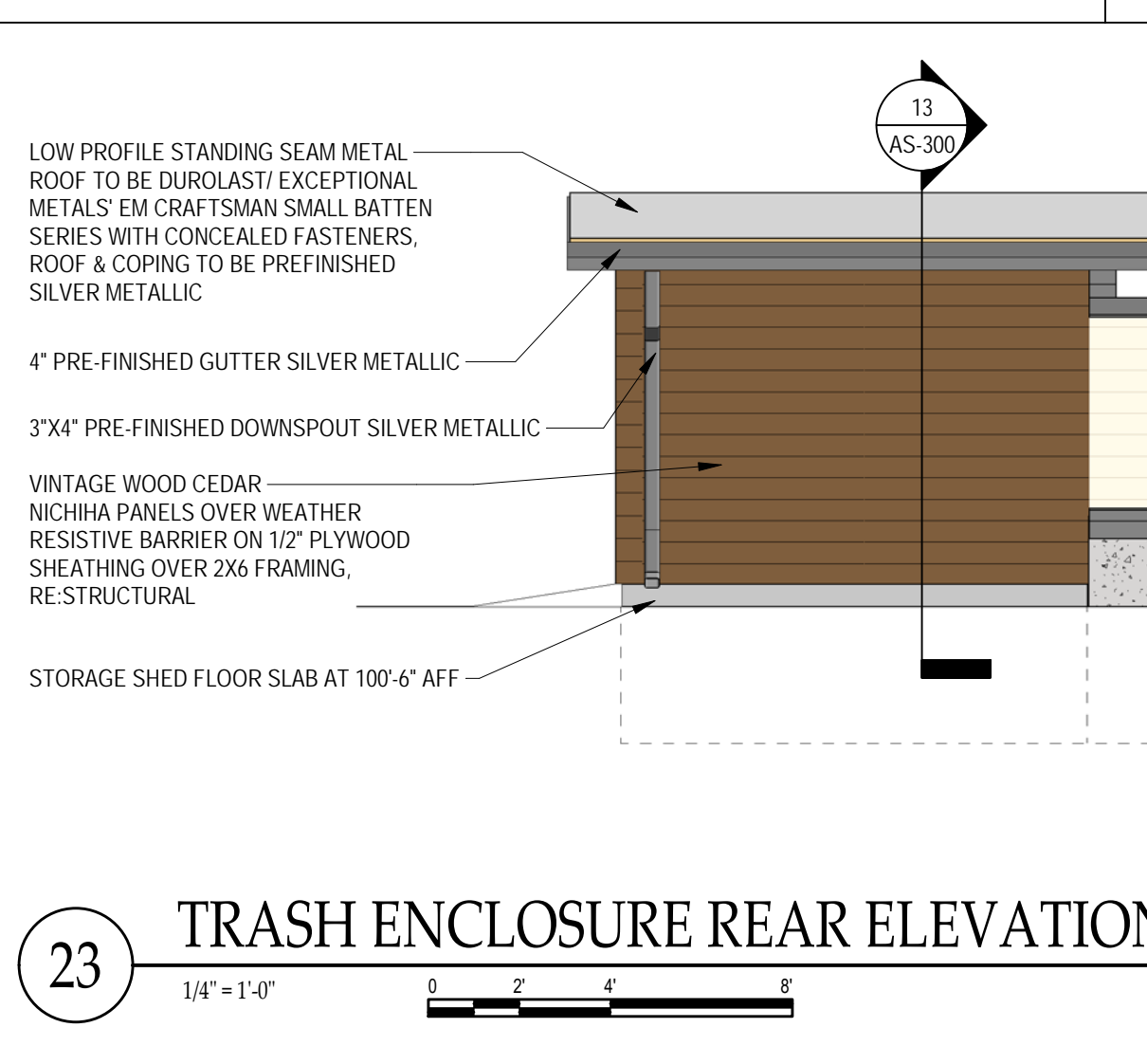
13 STORAGE SHED SECTION
 1/4" = 1'-0"



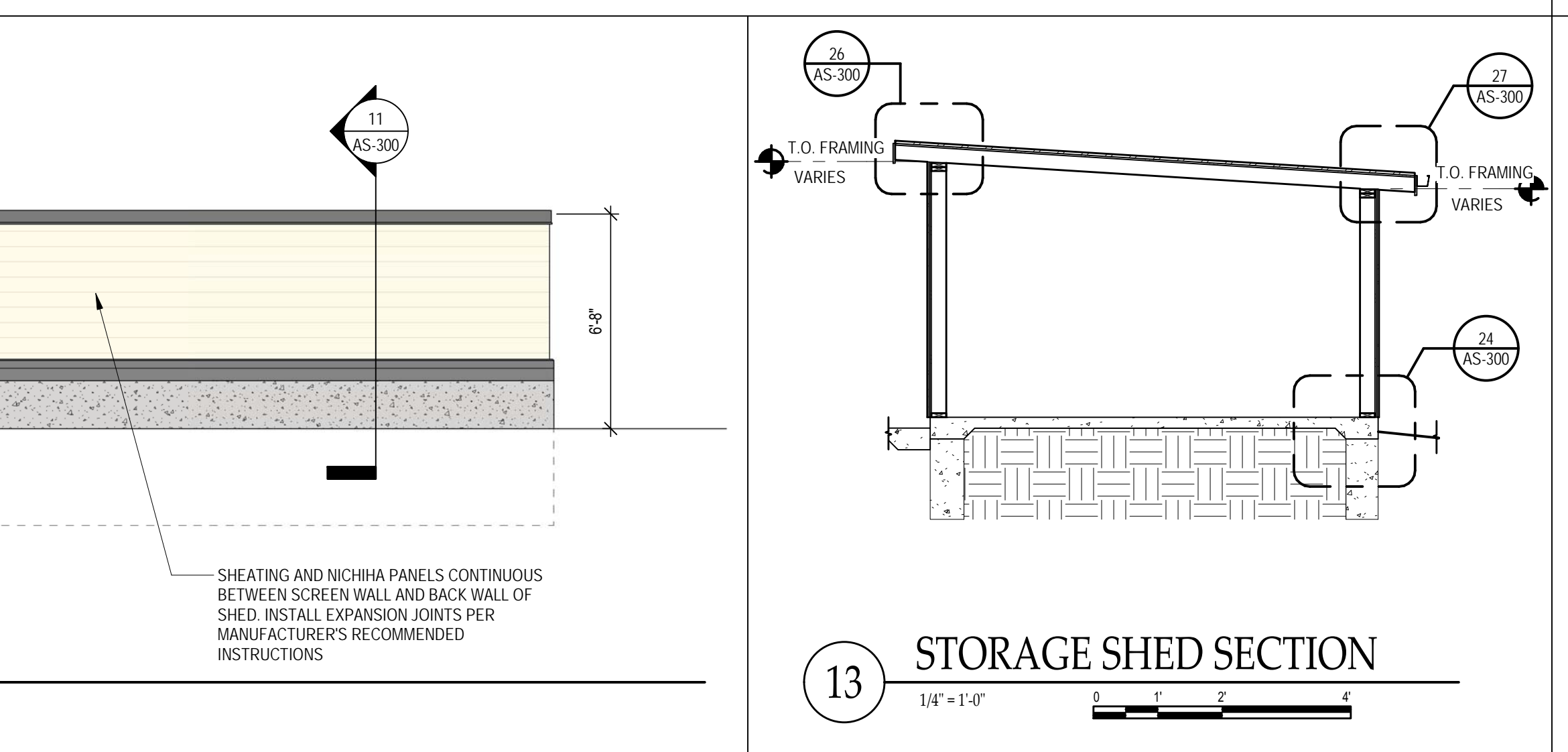
1 ENLARGED TRASH ENCLOSURE PLAN
 1 1/2" = 1'-0"



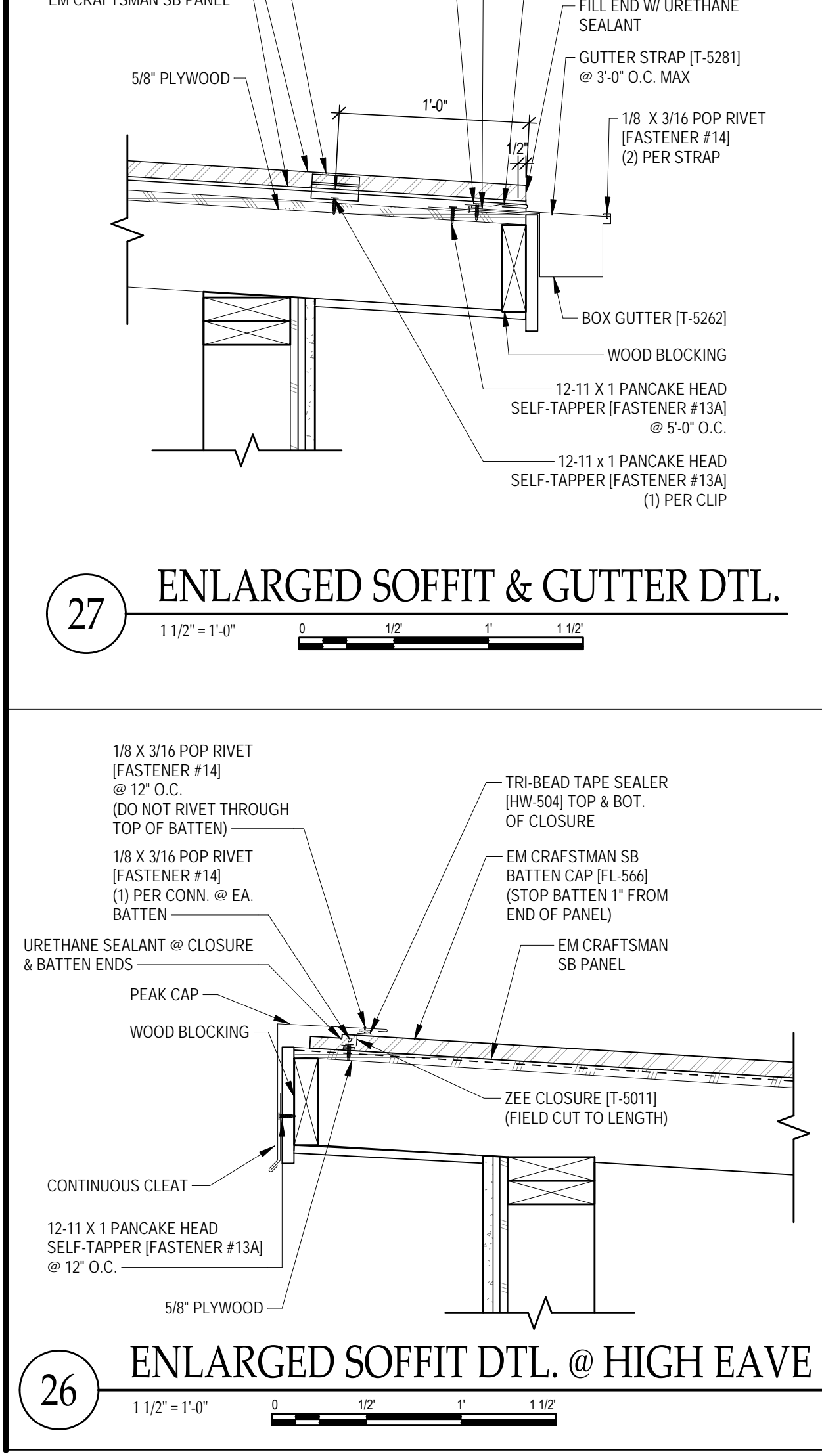
26 ENLARGED SOFFIT DTL. @ HIGH EAVE
 1 1/2" = 1'-0"



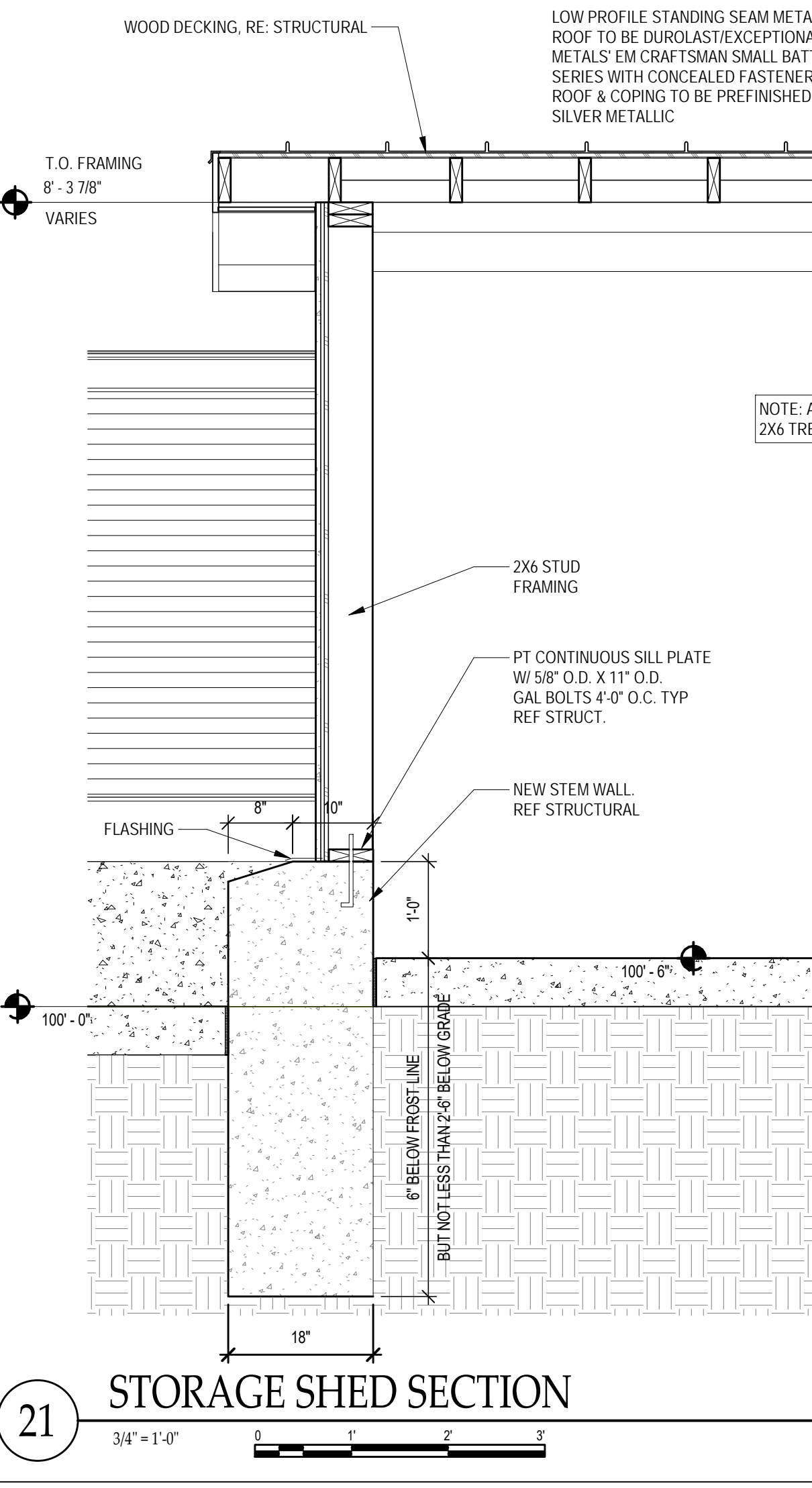
21 STORAGE SHED SECTION
 3/4" = 1'-0"



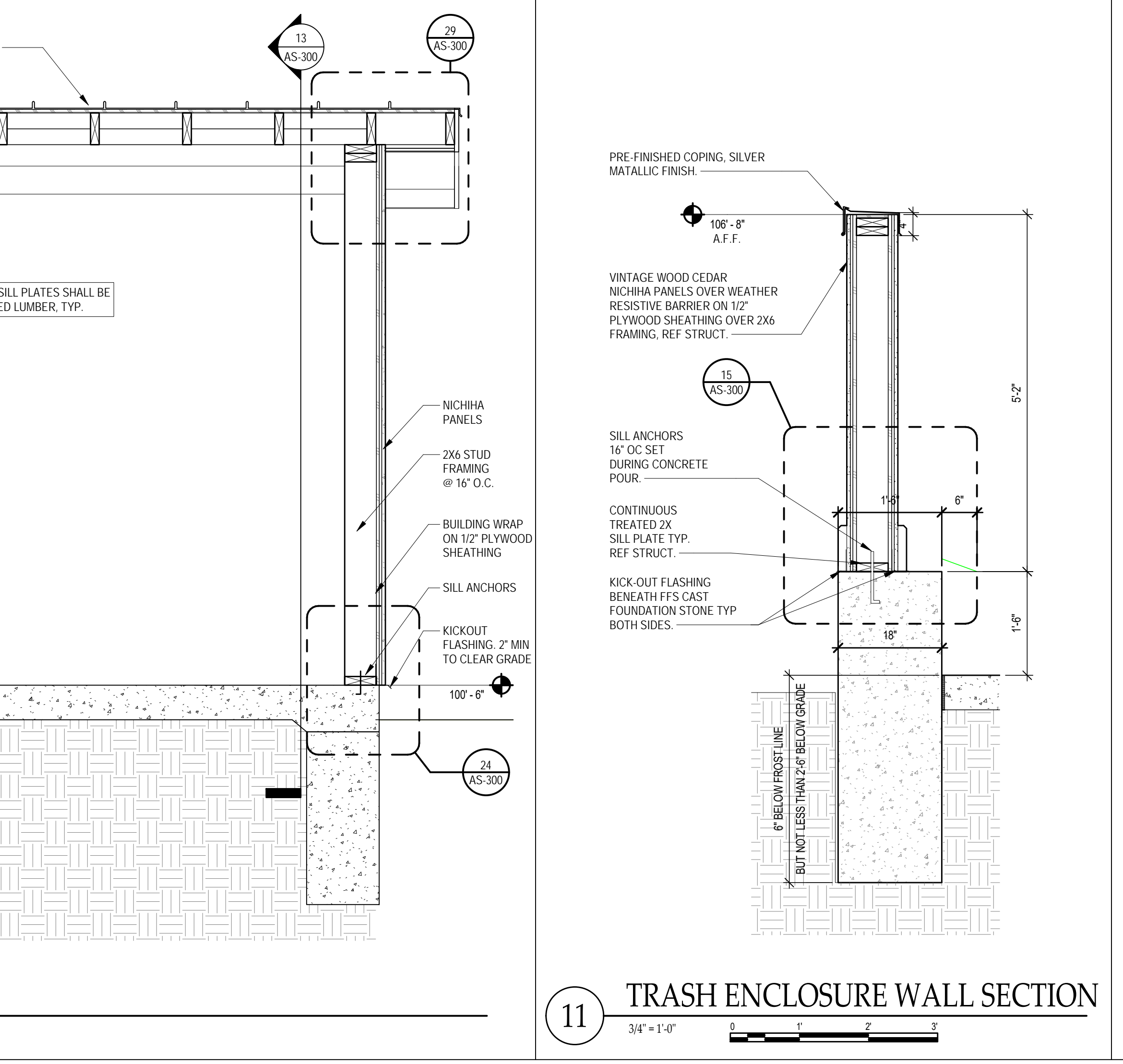
11 TRASH ENCLOSURE WALL SECTION
 3/4" = 1'-0"



25 ENLARGED SOFFIT & GUTTER DTL.
 1 1/2" = 1'-0"



20 STORAGE SHED SECTION
 3/4" = 1'-0"



13 STORAGE SHED SECTION
 1/4" = 1'-0"

DESCRIPTION	DATE
PROJECT NO:	23234
STORE NO:	XXXX
DATE:	10.08.2023
DRAWN BY:	Author
CHECKED BY:	Checker