

INDI RUN PLAT 5 FINAL PLAT

DATE	02/06/23
REVISIONS	PREPARED
REVIEWED	PREPARED

4121 NW URBANDALE DRIVE
URBANDALE, IA 50322
PHONE: (515) 369-4400

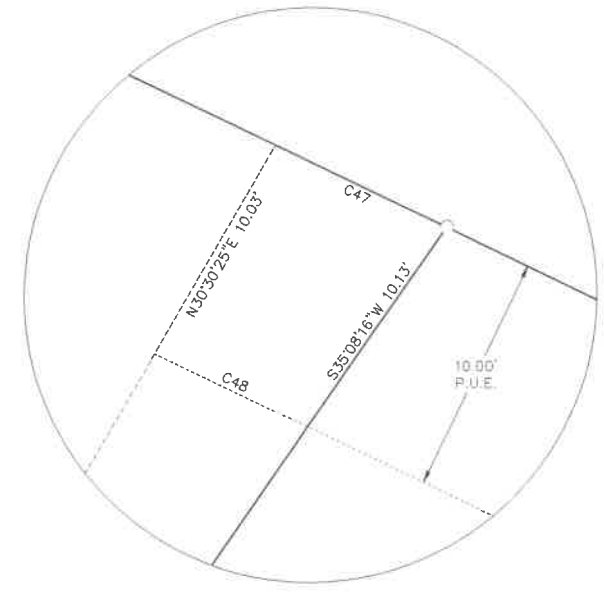


WAUKEE, IOWA

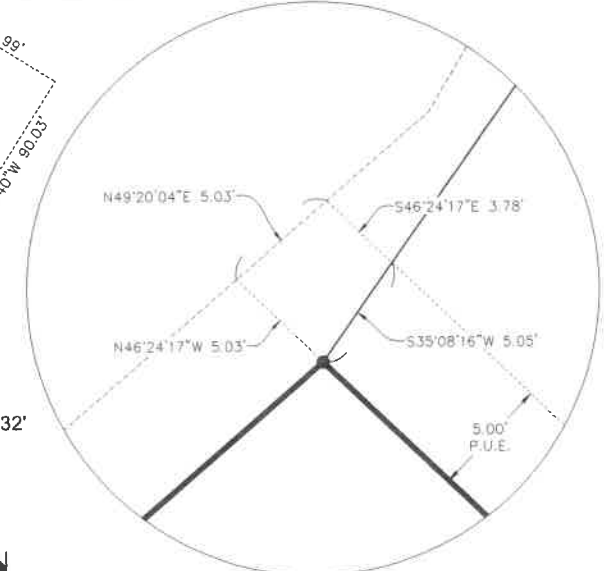
INDI RUN PLAT 5 FINAL PLAT

1806.355

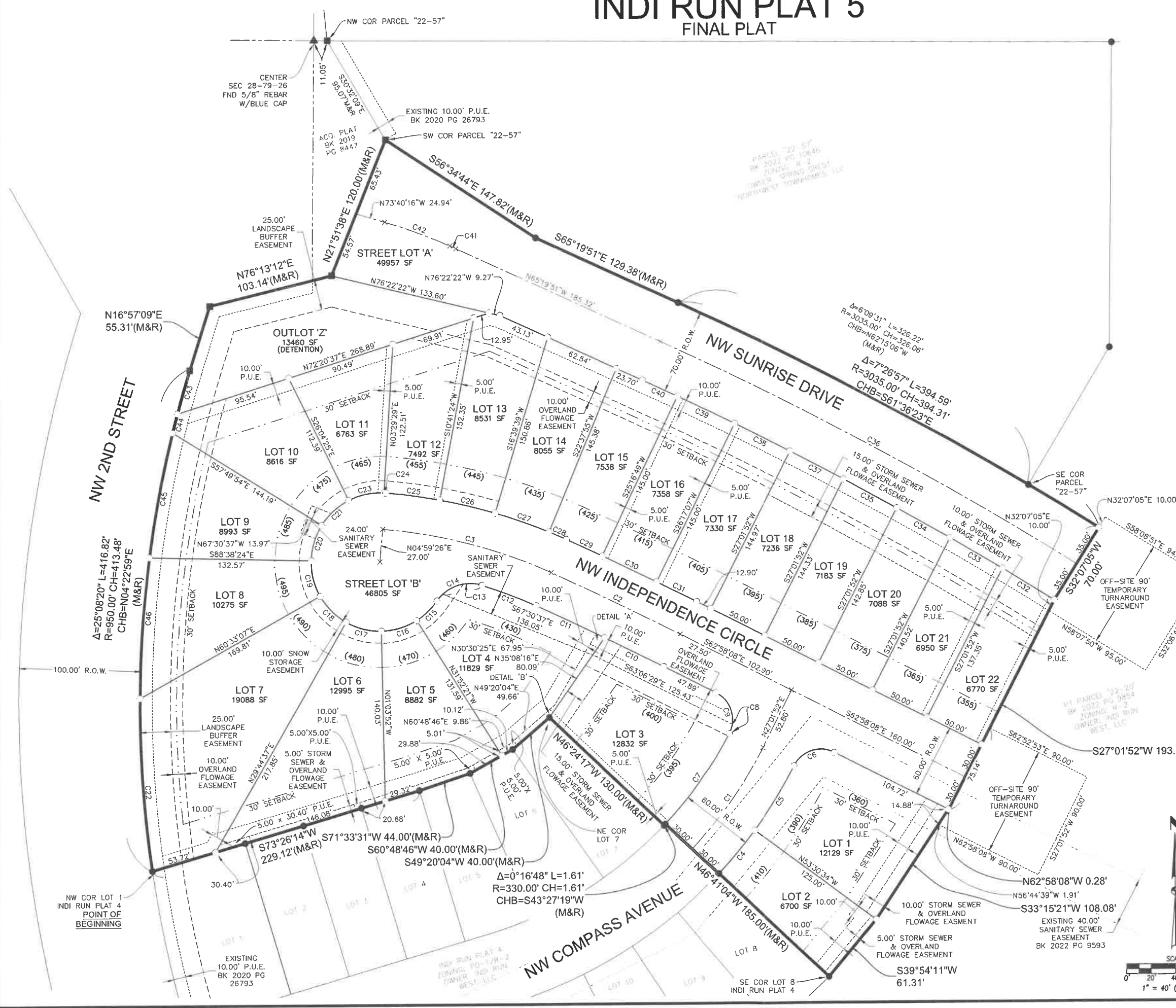
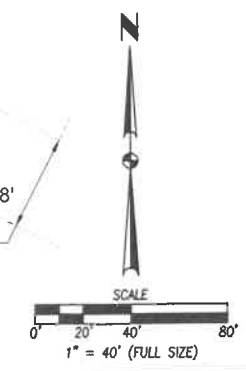
DETAIL 'A'



DETAIL 'B'



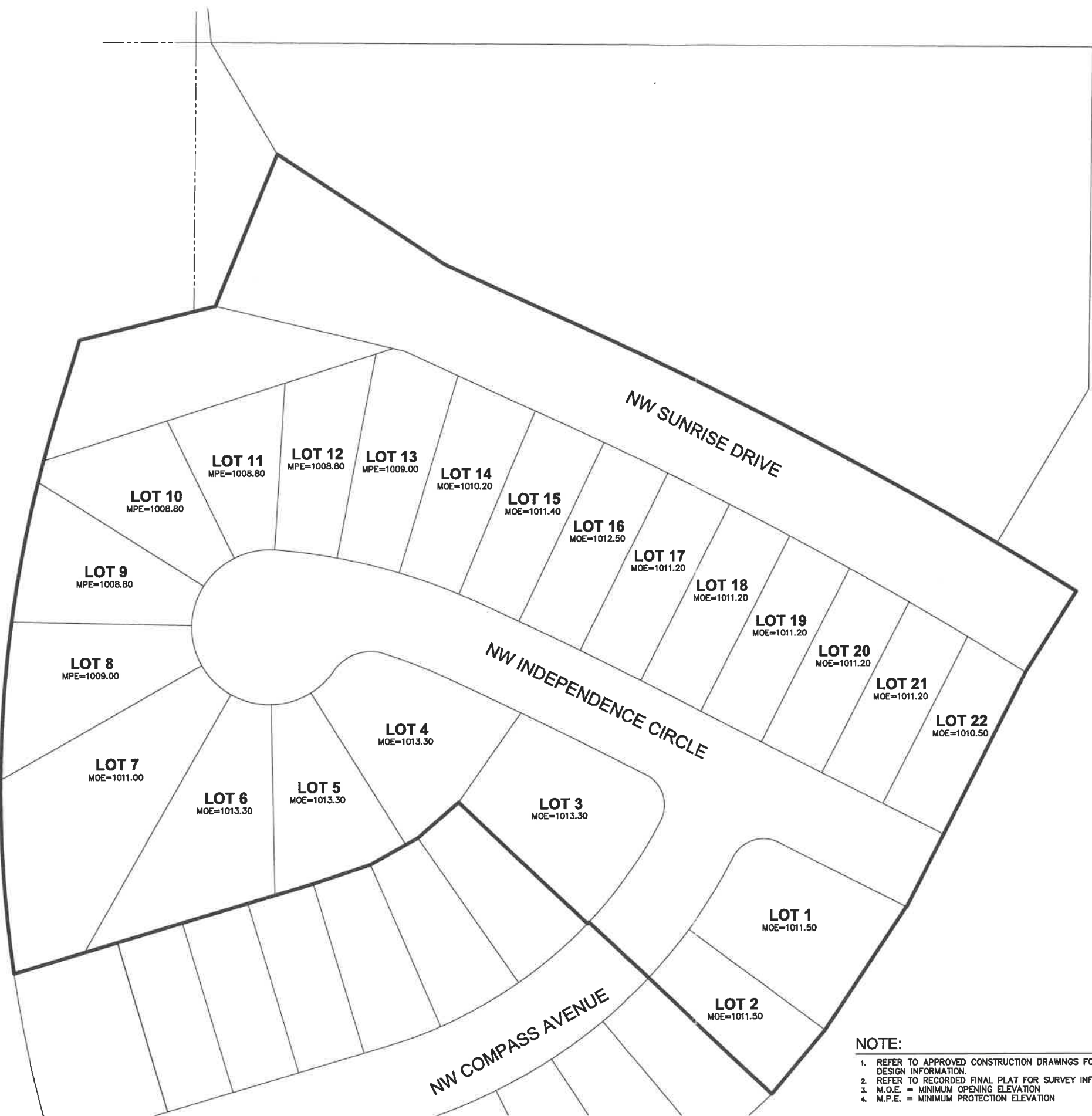
LEGEND	FOUND	SET
SECTION CORNER AS NOTED	▲	△
1/2" REBAR W/RED PLASTIC CAP#19968 (UNLESS OTHERWISE NOTED)	●	○
5/8" REBAR W/BLUE CAP#18381	■	□
MEASURED BEARING & DISTANCE	M	R
RECORDED BEARING & DISTANCE	D	D
CENTERLINE	---	---
SECTION LINE	---	---
EASEMENT LINE	---	---
BUILDING SETBACK LINE	---	---
PLAT BOUNDARY	---	---



FILE: H:\2018\INDI RUN PLAT 5\INDI RUN PLAT 5 FINAL PLAT.dwg
 DATE: 02/06/23 10:23 AM
 PLOTTER: HP DesignJet 5000PS

PLAT 1806.355
 FILE NO. 1806.355
 DATE 11/02/2023
 DRAWN BY: JEFF NESVIK
 CHECKED BY: JEFF NESVIK

NW 2ND STREET



- NOTE:**
- REFER TO APPROVED CONSTRUCTION DRAWINGS FOR COMPLETE DESIGN INFORMATION.
 - REFER TO RECORDED FINAL PLAT FOR SURVEY INFORMATION.
 - M.O.E. = MINIMUM OPENING ELEVATION
 - M.P.E. = MINIMUM PROTECTION ELEVATION



JEFFREY J. NESVIK
23810
IOWA

I HEREBY CERTIFY THAT THIS ENGINEERING DOCUMENT WAS PREPARED BY ME OR UNDER MY DIRECT PERSONAL SUPERVISION AND THAT I AM A DULY LICENSED PROFESSIONAL ENGINEER UNDER THE LAWS OF THE STATE OF IOWA.

Jeff Nesvik
JEFFREY J. NESVIK, P.E. 11/02/2023
DATE

LICENSE NUMBER 23810
MY LICENSE RENEWAL DATE IS DECEMBER 31, 2024
PAGES OR SHEETS COVERED BY THIS SEAL:
THIS SHEET

DATE: 10/17/23

REVISIONS:

PREPARED:

4121 NW URBANDALE DRIVE
URBANDALE, IA 50322
PHONE: (515) 369-4400

TECH:

ENGINEER:

REVIEW:

CIVIL DESIGN ADVANTAGE

WAUKEE, IOWA

INDI RUN PLAT 5
ENGINEER EXHIBIT

1 / 1
1806.355