

1 FLOOR ONE  
1/8" = 1'-0"

Area Schedule - Floor 1	
Name	Area
Suite 1	1960 SF
Suite 2	1766 SF
Suite 3	1846 SF
Suite 4	1133 SF
Suite 5	1990 SF
Lobby-Stair 1	767 SF
Electrical	64 SF
Sprinkler	81 SF
Stair 2	194 SF
	<b>9800 SF</b>

**OFFICE BLDG**  
KEETOWN LOT 13  
WAUKEE, IOWA

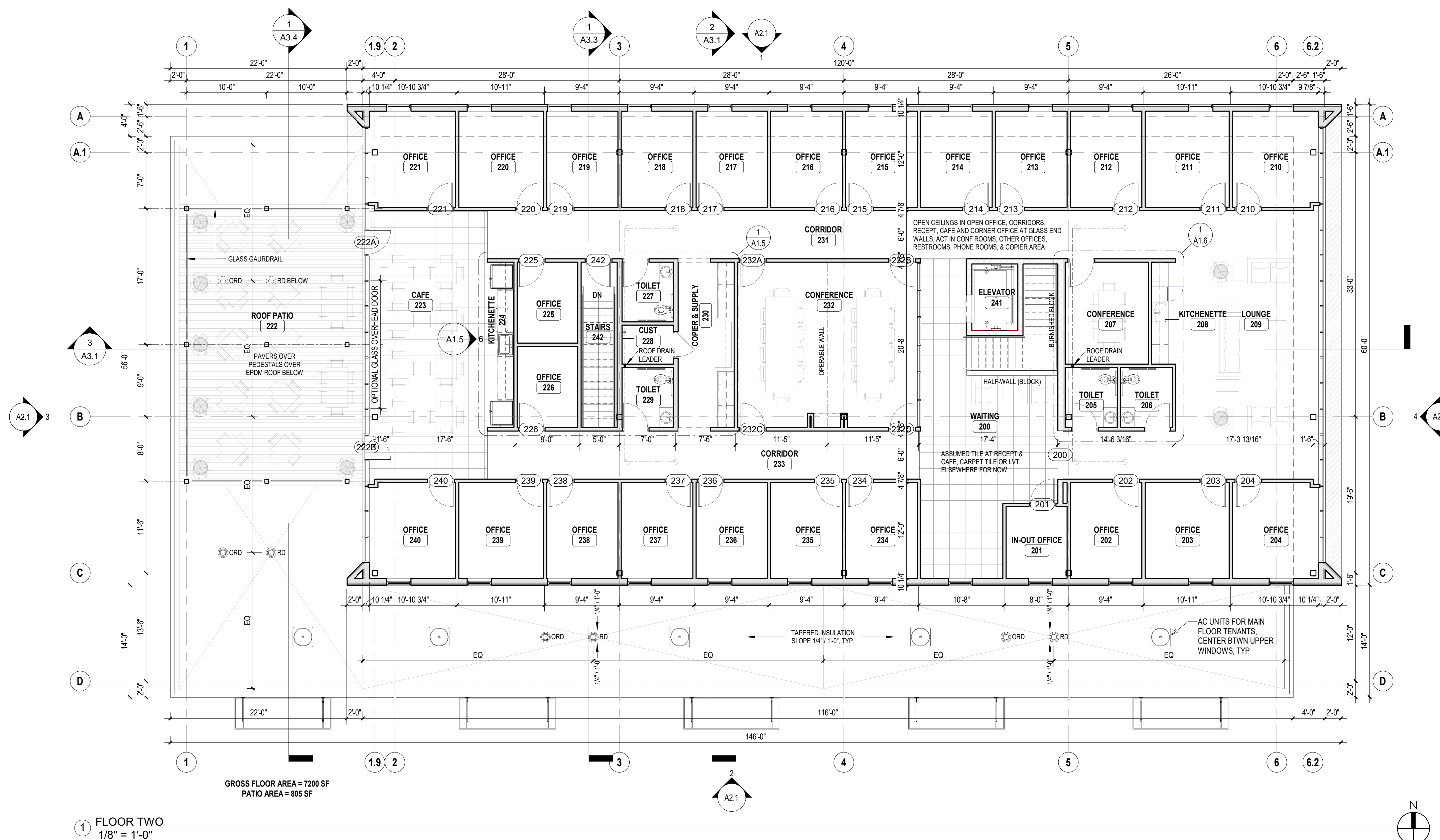
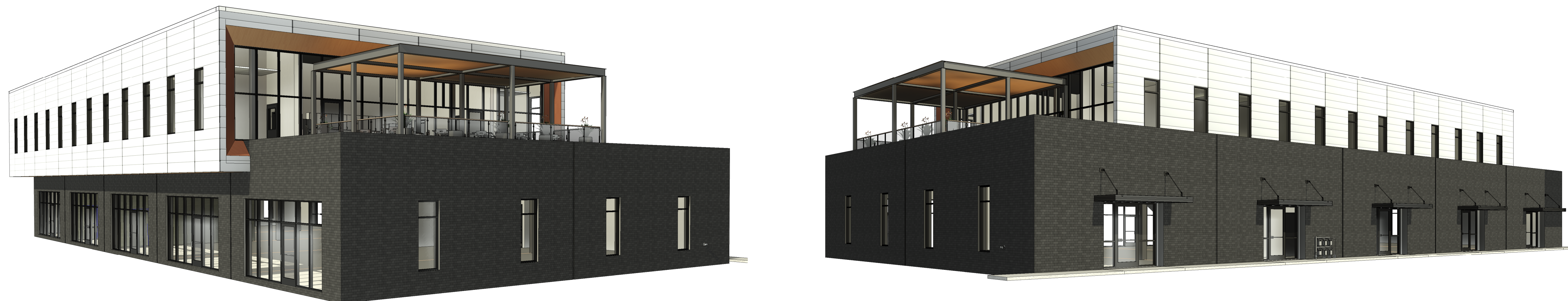
RE/MAX PRECISION

Revisions	

ISSUE DATE: 06/05/23 PROJ. #: RA-23020  
FLOOR PLANS

2023-11-01 -- FOR REVIEW

**A1.1**



Area Schedule - Floor 2	
Name	Area
Gross Office	7140 SF
Roof Patio	820 SF
	7960 SF

**OFFICE BLDG**  
KEETOWN LOT 13  
WAUKEE, IOWA

RE/MAX PRECISION

Revisions	

ISSUE DATE: 06/05/23 PROJ. #: RA-23020

FLOOR PLANS

2023-11-01 -- FOR REVIEW

**A1.2**

1 FLOOR TWO  
1/8" = 1'-0"

Exterior Materials	East		North		West		South		Total	
	Area	%	Area	%	Area	%	Area	%	Area	%
Brick	902	39%	2171	42%	902	44%	2052	46%	6027	43%
Architectural Metal Panels	267	11%	1723	33%	116	6%	1723	39%	3829	27%
Wood-look Siding	421	18%	0	0%	275	14%	0	0%	696	5%
Storefront & Entrances	744	32%	1288	25%	744	37%	662	15%	3438	25%
<b>Total Wall Area</b>	<b>2334</b>	<b>100%</b>	<b>5182</b>	<b>100%</b>	<b>2037</b>	<b>100%</b>	<b>4437</b>	<b>100%</b>	<b>13990</b>	<b>100%</b>

THESE PLANS AND SPECIFICATIONS ARE PROTECTED UNDER FEDERAL COPYRIGHT LAWS. © ARCHITECT MAINTAINS OWNERSHIP OF SUCH AND ALL RIGHTS AND PRIVILEGES.

**RAINS ARCHITECTURE**

3820 79TH ST, URBANDALE, IOWA 50322  
515-314-8696 jeff@rainsarch.com

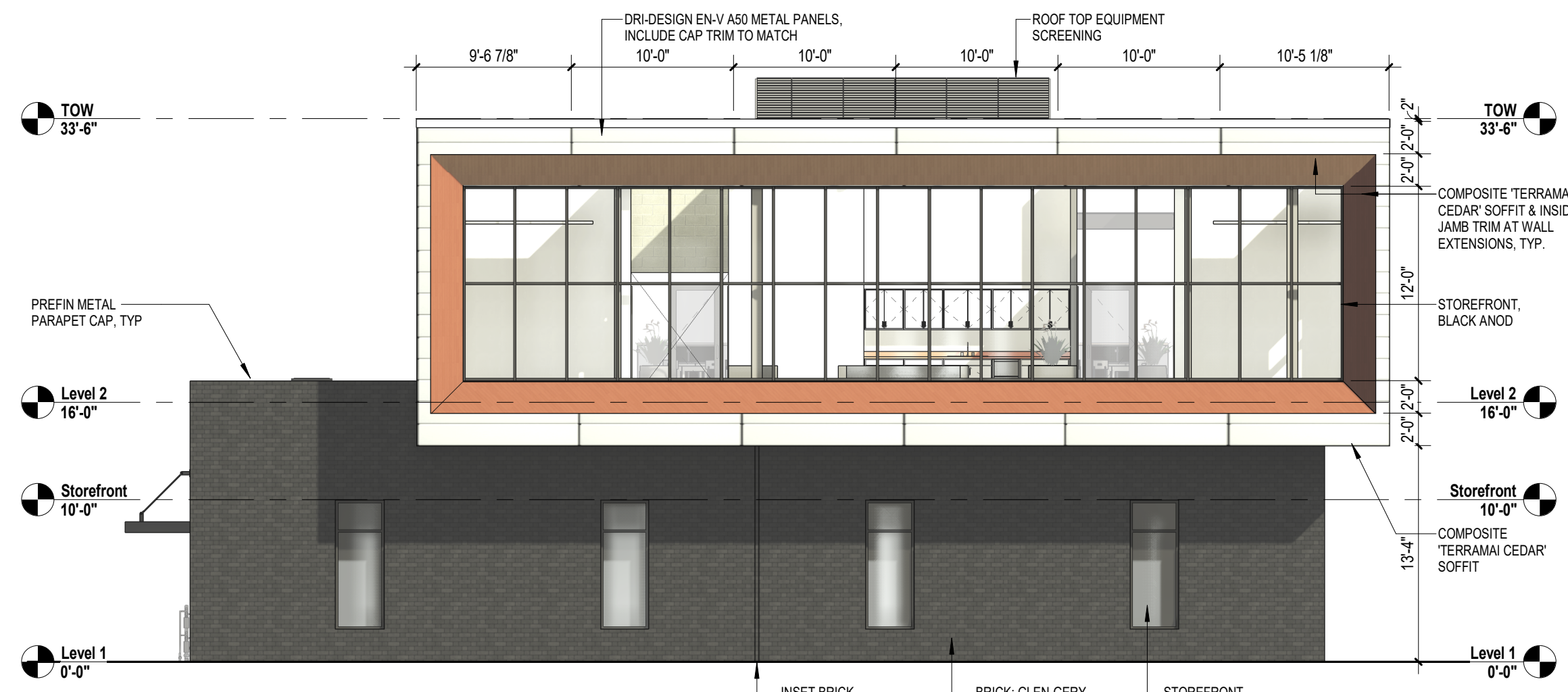
**INTERIOR DESIGN**  
BLUE DOOR DESIGNS, LLC  
515-975-5934 traci@bluedoor designs.studio

**STRUCTURAL ENGINEERING**  
STRUCTUREFY ENGINEERING, INC.  
5550 Wild Rose Ln, Suite 400  
West Des Moines, IA 50266  
515-991-4176 bjb@structurefy.com

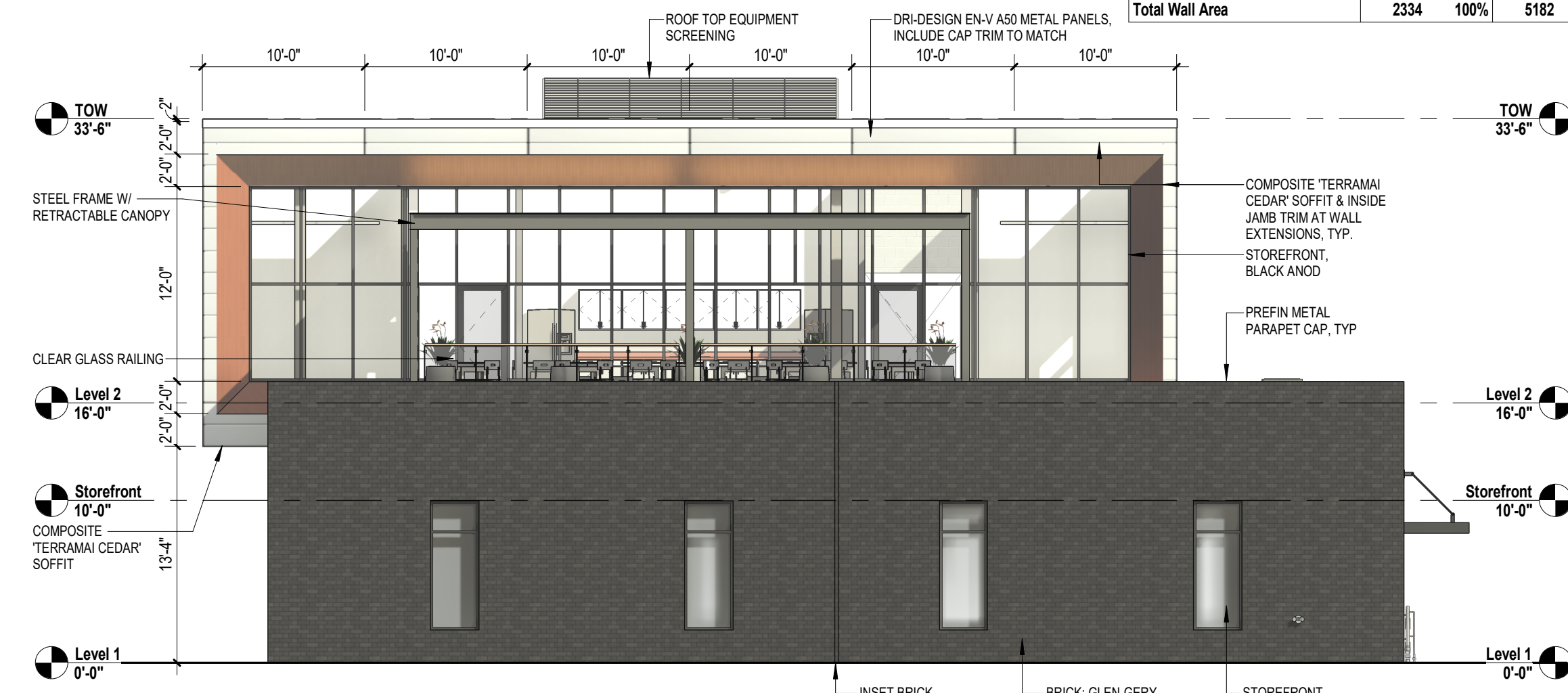
**CIVIL ENGINEERING**  
CONFLUENCE  
525 17th Street, Des Moines, IA 50309  
515-288-4875 mcarlile@thinkconfluence.com

**DESIGN NOTES**

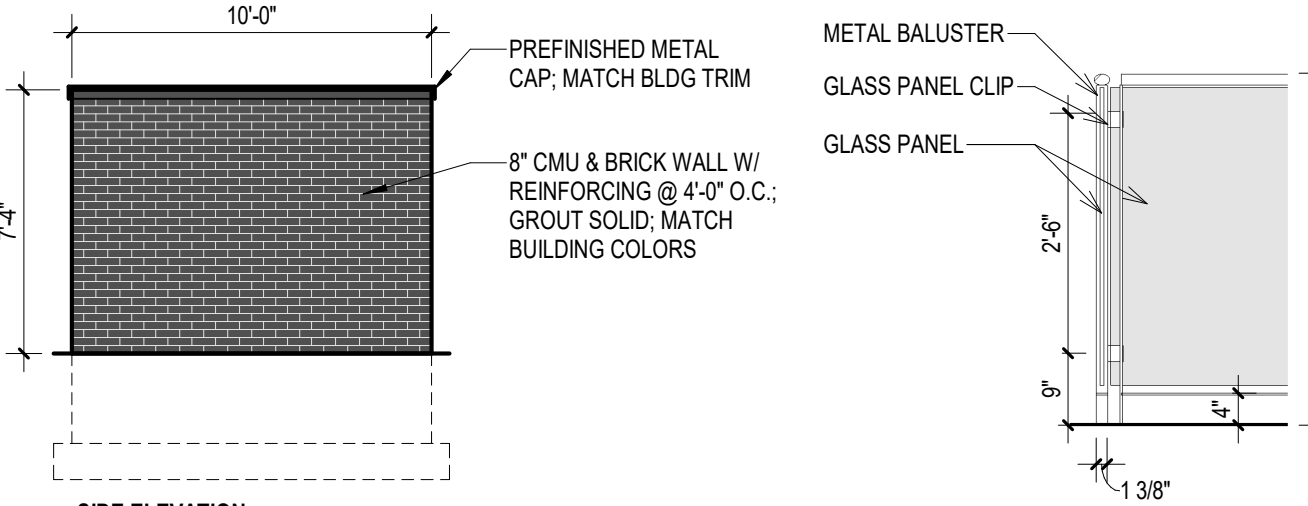
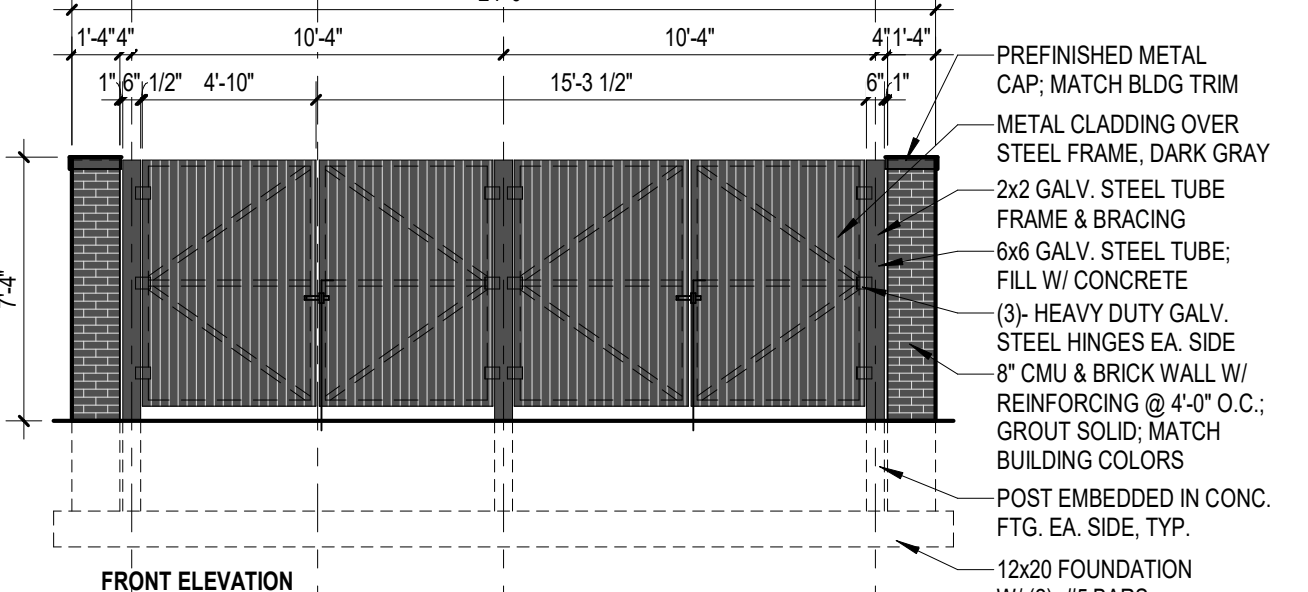
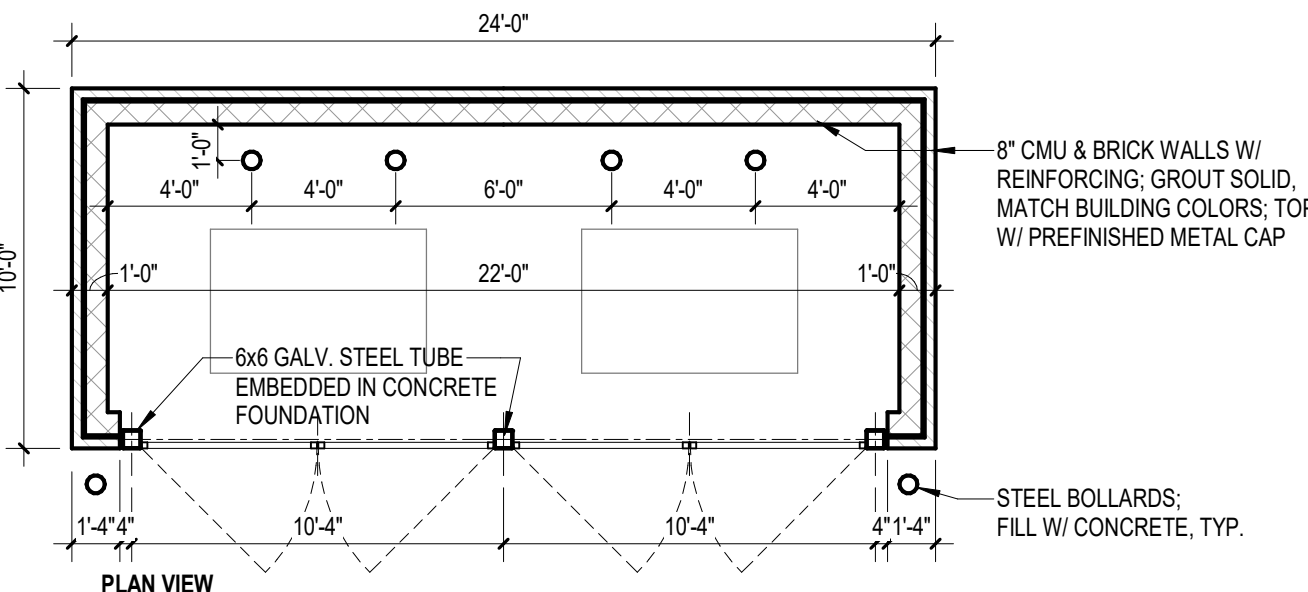
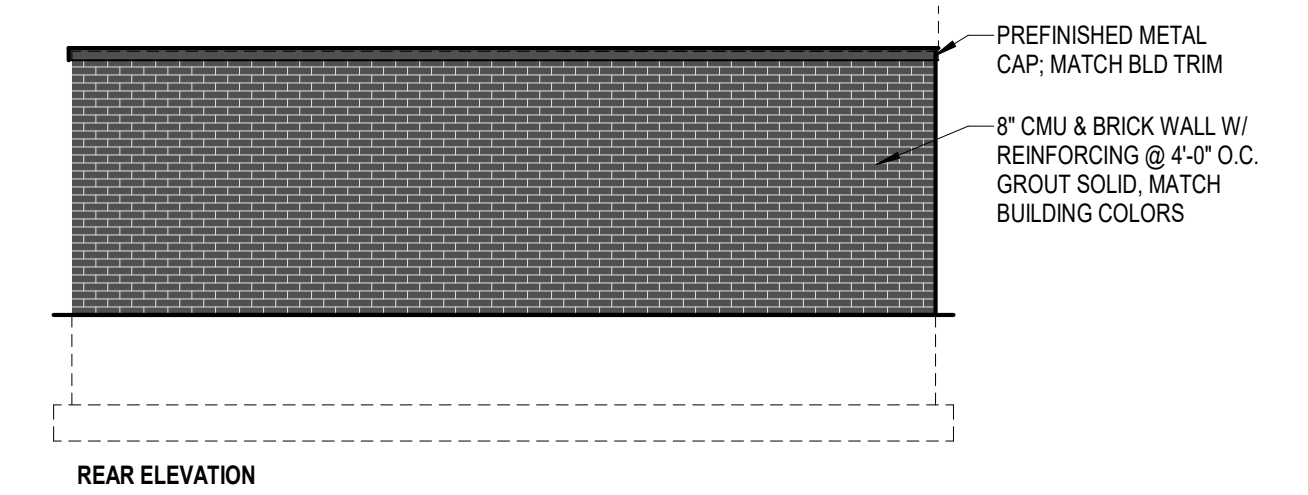
- ALL CONDUITS, PIPES, WIRING, ROUGH-IN, ETC. SHOULD BE HELD AS TIGHT AS POSSIBLE TO THE ROOF OR FLOOR DECK OR SHOULD BE KEPT WITHIN INTERIOR WALL CAVITIES. NOTHING SHALL PREVENT A SMOOTH CONTINUOUS FINISHED WALL OR CEILING AS NOTED ON THE DRAWINGS AND NO PLUMBING RUN IN EXTERIOR WALLS UNLESS PRE-APPROVED. THE ARCHITECT OR OWNER PLACEMENT COORDINATION BETWEEN TRADES IS REQUIRED.
- CAULK & SEAL ALL CONTROL-EXPANSION, SAW-CUT JOINTS AT ALL INTERIOR CONCRETE.
- PROVIDE DEEP LEG TOP TRACK NOT FASTENED TO STUDS TO ALLOW FOR VERTICAL DEFLECTION OF ROOF STRUCTURE.
- ALL GYPSUM BOARD SURFACES TO BE SANDED SMOOTH, PRIMED AND FINISH PAINTED WITH HIGH QUALITY LATEX PAINT. PROVIDE INTEGRAL METAL REINFORCED G.W.B CORNERS, TYP. PROVIDE MOISTURE RESISTANT DRYWALL AT ALL WET WALL LOCATIONS AND ENTIRE RESTROOM, TYP.
- PROVIDE VERTICAL & HORIZONTAL EXPANSION JOINTS AS REQUIRED TO PREVENT CRACKS IN WALLS. TRY TO LOCATE AT STRESS POINTS AND AT THE HEAD OF DOOR JAMBS/OPENINGS OR AS OTHERWISE NOTED OR WHERE REQUIRED PER STANDARD MATERIAL PRACTICE TO ELIMINATE STRESS CRACKING.
- PROVIDE ADEQUATE BLOCKING FOR MILLWORK, FIXTURES, EQUIPMENT, PLUMBING FIXTURES AND ACCESSORIES, ELECTRIC PANELS, ROOF ACCESS LADDER, FUTURE OR BY OWNER ITEMS, ETC.
- ALL PENETRATIONS THRU DEMISING WALL MUST BE PROTECTED BY APPROVED FIRE RATED ASSEMBLIES AND FIRE STOPPING MATERIALS.
- INSULATE AND SEAL TO ENSURE ADEQUATE AIR INFILTRATION BARRIER AROUND ALL EXTERIOR PENETRATIONS TO PREVENT FREEZING.
- FE = FIRE EXTINGUISHER ON BRACKETS
- FEC = FIRE EXTINGUISHER CABINET, SEMI-RECESSED



4 East  
1/8" = 1'-0"

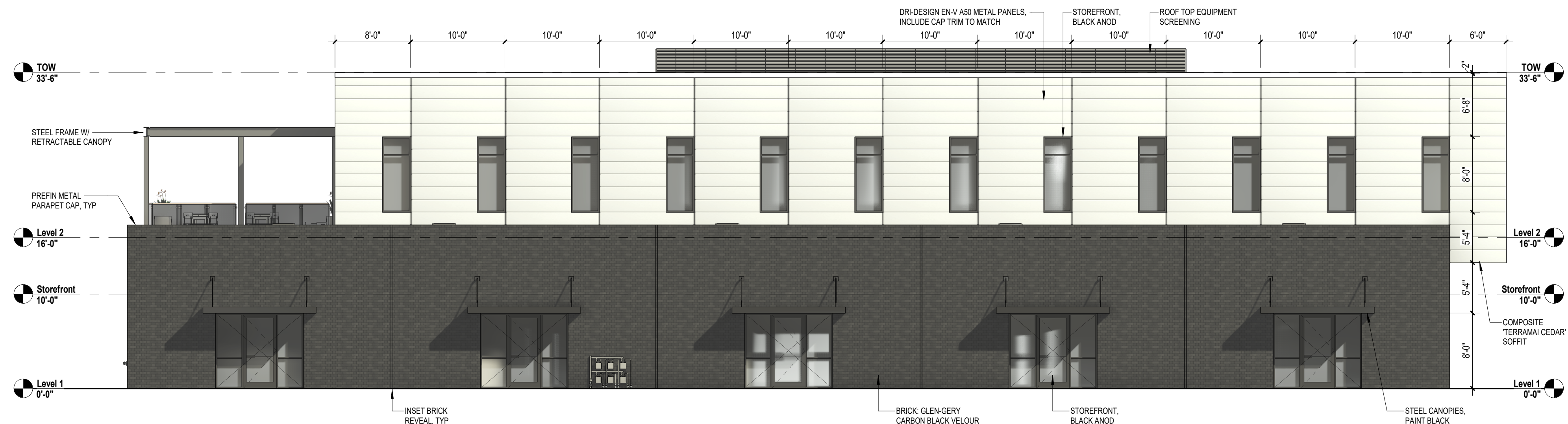


3 West  
1/8" = 1'-0"

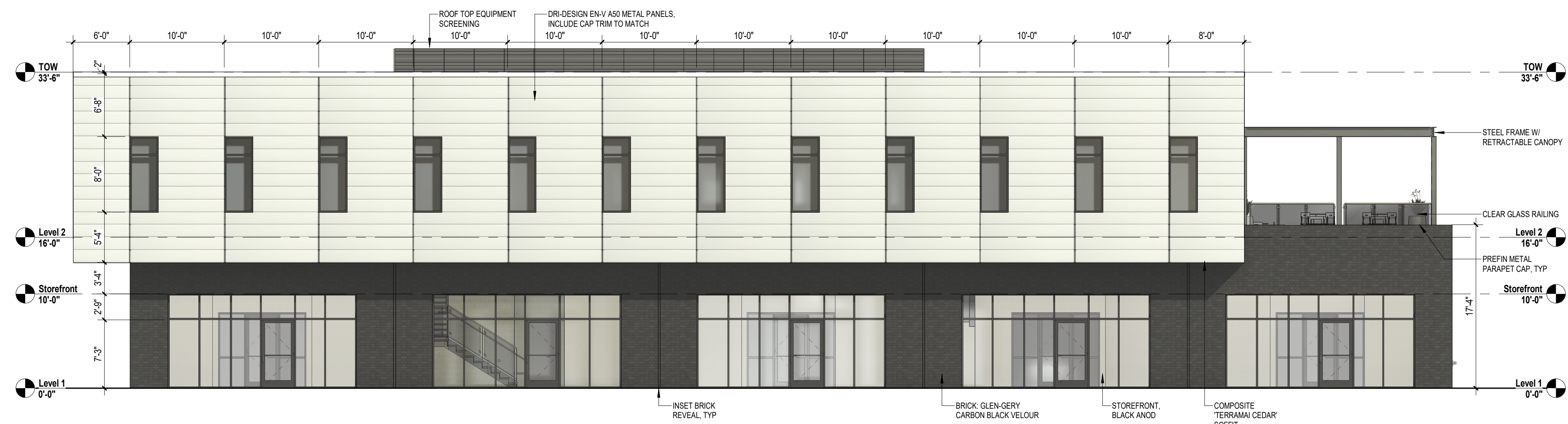


5 Trash Enclosure  
3/16" = 1'-0"

6 GLASS RAILING DETAIL  
1/2" = 1'-0"



2 South  
1/8" = 1'-0"



1 North  
1/8" = 1'-0"

**OFFICE BLDG**  
KEETOWN LOT 13  
WAUKEE, IOWA

**RE/MAX PRECISION**

Revisions	

ISSUE DATE: 06/05/23 PROJ. #: RA-23020

EXTERIOR ELEVATIONS

2023-11-01 -- FOR REVIEW

**A2.1**