

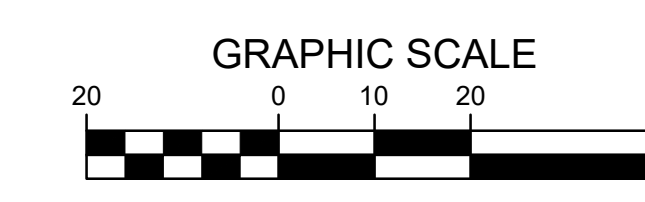
DEMO NOTES:

1. SAWCUT & REMOVE ALL PAVEMENT TO FULL DEPTH OF SLAB.
2. PROTECT ALL TREES NOT CALLED OUT FOR REMOVAL WITH ORANGE CONSTRUCTION FENCE AT THE DRIP LINE.
3. PRIOR TO REMOVING TREE IN 8' WATER, VALVES #1, 2 AND 3 SHALL BE TURNED OFF.

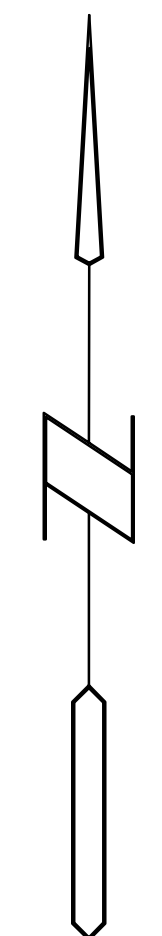
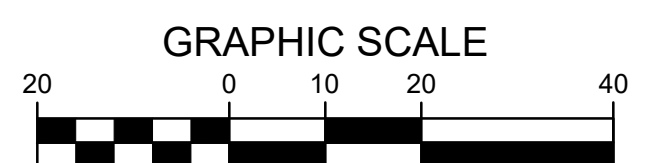
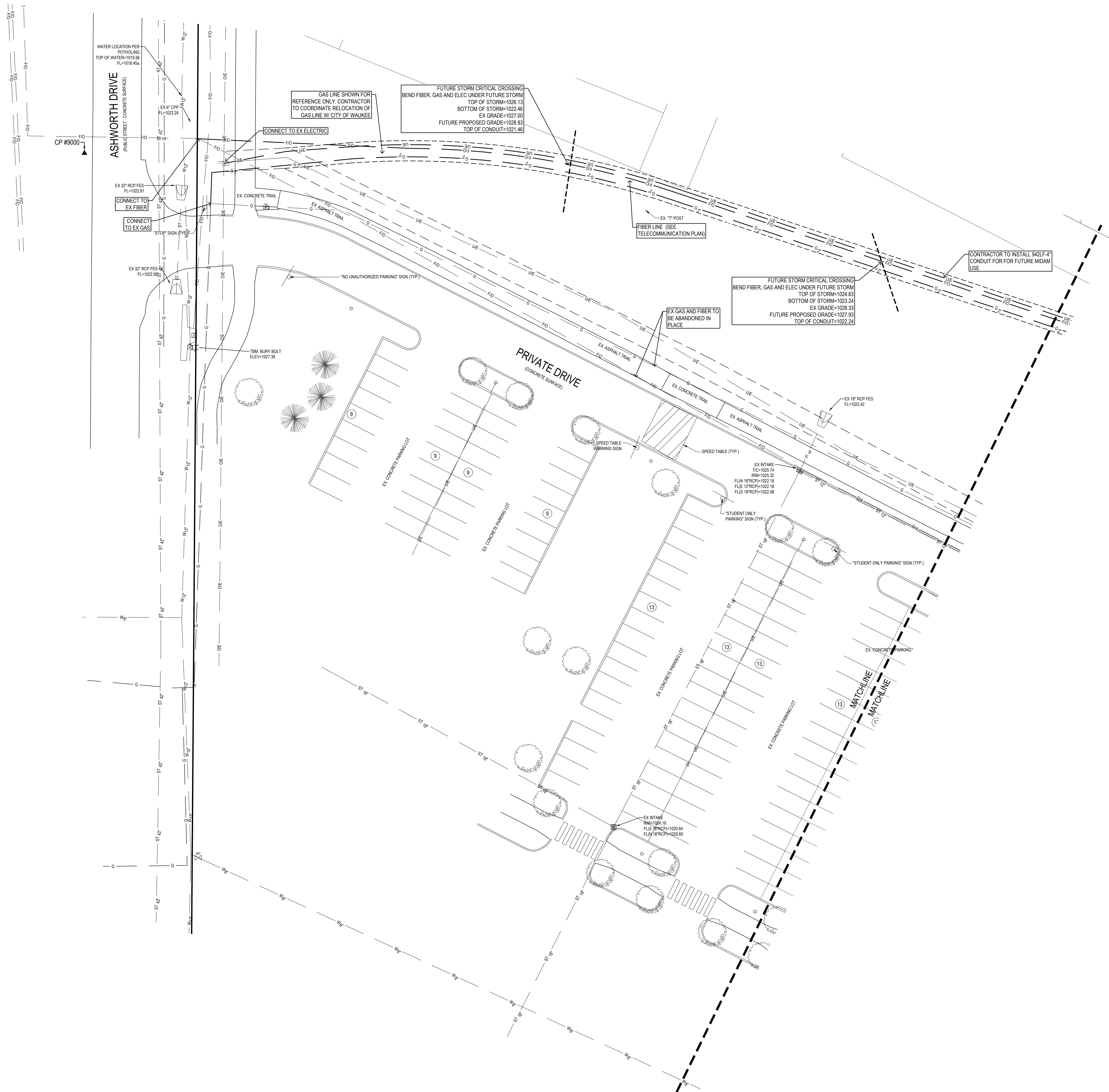
WATER REMOVAL NOTES:

CONTRACTOR TO PLAN WATER REMOVAL WORK FOR EITHER A NIGHT OR A WEEKEND. CONTRACTOR RESPONSIBLE FOR COORDINATING TIME AND DATE WITH THE SCHOOL DISTRICT. WATER CAN ONLY BE TURNED OFF FOR A MAXIMUM OF 4 HOURS AT A TIME. THE FOLLOWING STEPS SHALL BE TAKEN:

1. CONTRACTOR TO TURN OFF VALVES 1, 2 AND 3.
2. CONTRACTOR TO DISCONNECT SECTION OF WATER TO BE ABANDONED AND INSTALL TEE AND VALVE FOR NEW SECTION OF WATER.
3. ONCE OLD CONNECTION IS REMOVED AND NEW CONNECTION IS INSTALLED ON EAST END, TURN BACK ON VALVES 2 AND 3 WHILE LEAVING VALVE 1 AND THE NEW VALVE CLOSED.
4. WITHIN 72 HOURS CONNECT WEST END OF NEW WATER TO EXISTING WATER AND TURN BACK ON VALVE 1 AND THE NEW VALVE.



2/14/2024 8:05:57 AM L:\LAND PROJECTS\2023\20115-2 WAUKEE HIGH SCHOOL ADDITION\UTILITY\RELOCATION\DWG\4 UTILITY.DWG



frk architects + engineers
2600 westown parkway, suite 340, west des moines, iowa 50266
p 515.225.5100 f 515.223.7226 www.frk-ia.com

BISHOP
ENGINEERING +
3501 104th Street, Urbandale, IA 50322 Ph: 515-276-0467

ADDITION AND RENOVATIONS TO
WAUKEE HIGH SCHOOL SITE UTILITIES
WAUKEE COMMUNITY SCHOOL DISTRICT
WAUKEE, IOWA

PROJECT NO.:	1018B12A
DATE:	FEBRUARY 2024
REVISIONS:	
DRAWING TITLE:	UTILITY PLAN
DRAWING NO.:	C-401

