



15225 Broadmoor Street
Overland Park, KS 66223
hd Architecture, LLC

9/12/2023
Architect - Gregory D. Higharger
License - STATE - NUMBER

The record copy of this drawing is on file at the offices of hd Architecture, LLC, 15225 Broadmoor Street, Overland Park, Kansas. This electronic document is released for the purposes of reference, coordination, and/or facility management. This electronic document of modifications thereof shall not be used for construction.

CIVIL CONSULTANT
Renaissance Infrastructure Consulting
8653 Penrose Ln
Lenexa, KS, 66219
913-317-9500

STRUCTURAL CONSULTANT
Apex Engineers, Inc
1625 Locust St
Kansas City, MO 64108
816-421-3222

MEP CONSULTANT
5BYS Engineers, LLC
1100 Main Street, Floor 4
Kansas City, MO 64105
(913) 689-9449

A New Retail Location For:

PLANNING

North of 1145 SE Alice's Rd
Waukee, IA 50263

Date: 10/19/2023
Job Number: 20-003.xx
Drawn By: JS
Checked By: GH
Type: 3A-L-4

Revisions	Number	Date	Description
1	12.21.23		2nd Planning Comments

A5.0
© 2023 hd Architecture, LLC
EXTERIOR ELEVATIONS & BUILDING SECTION

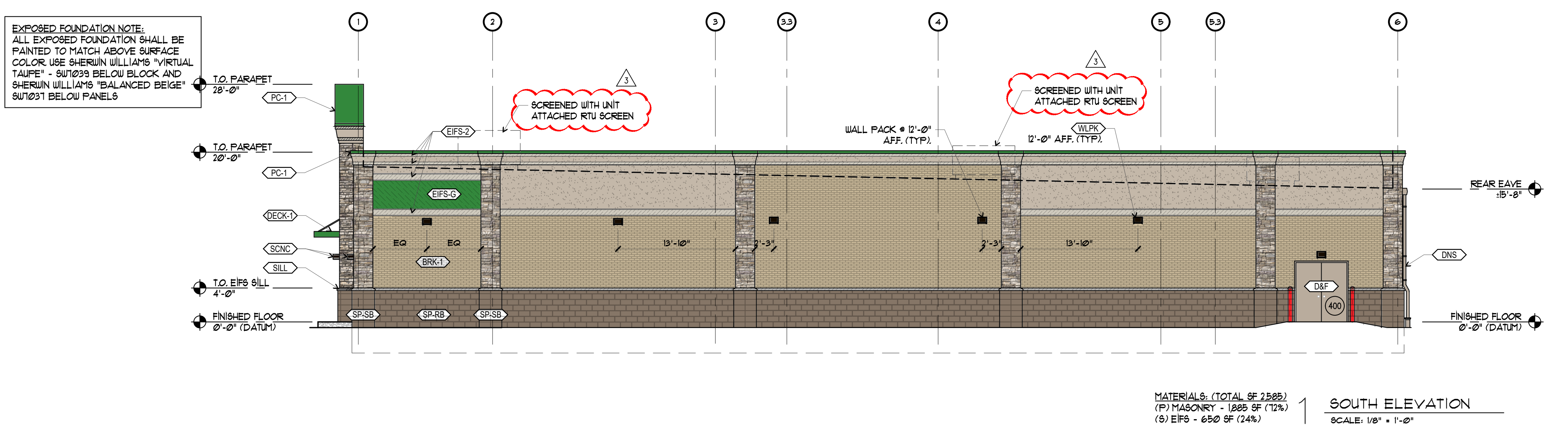
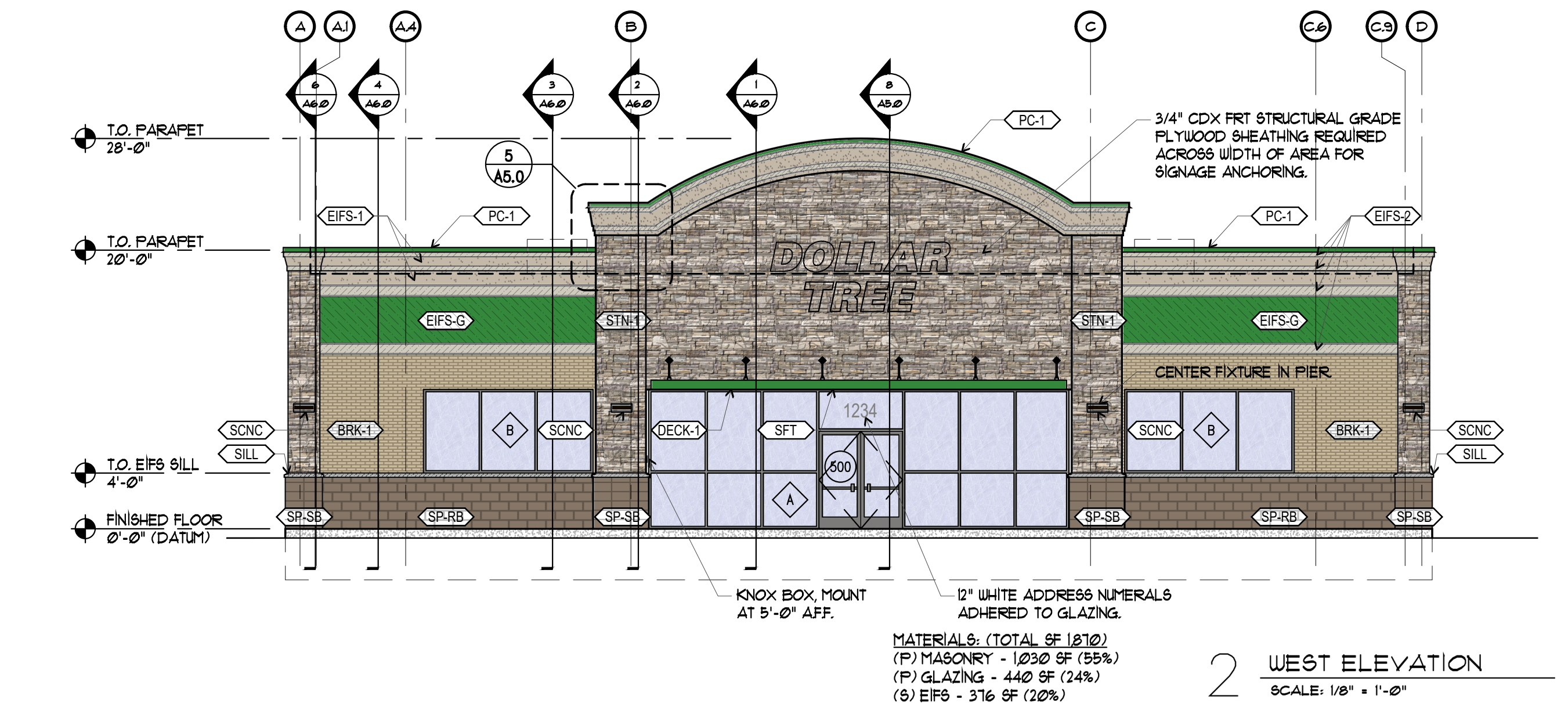
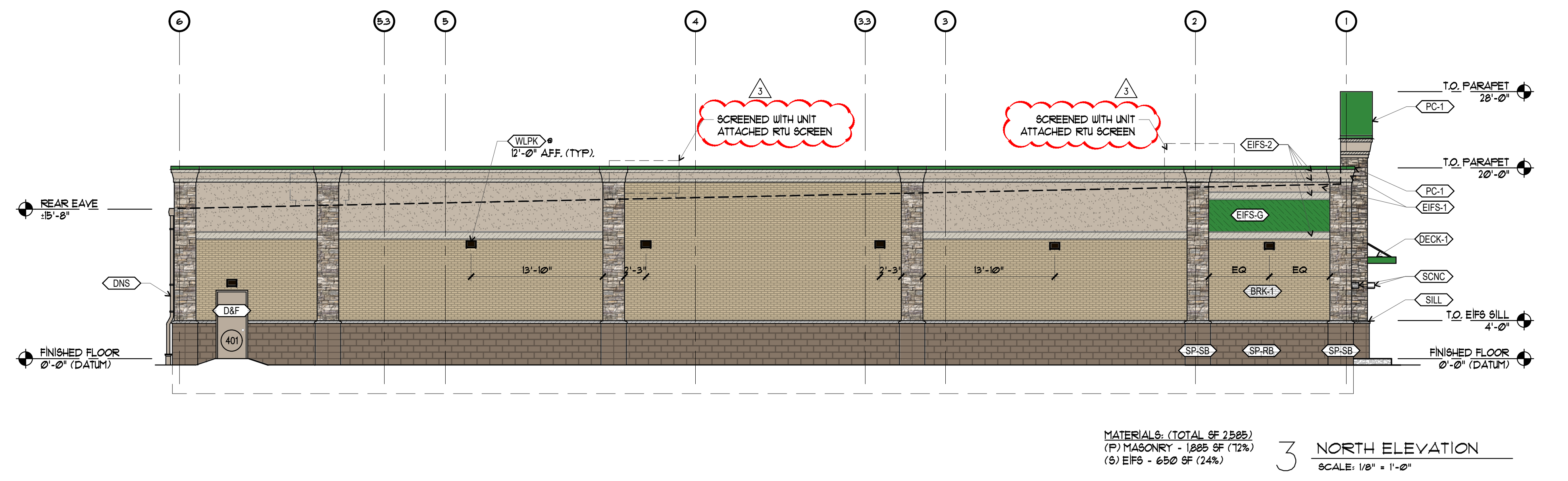
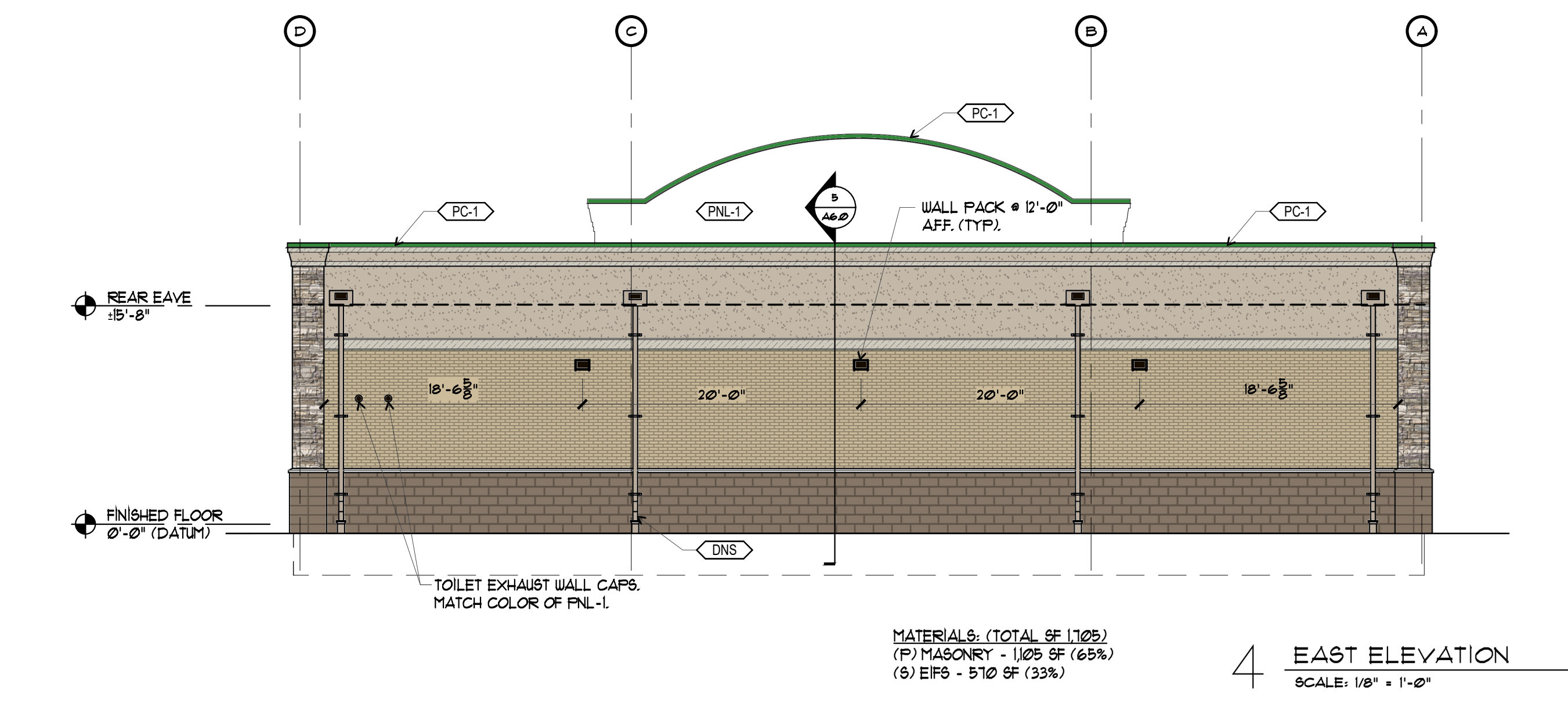
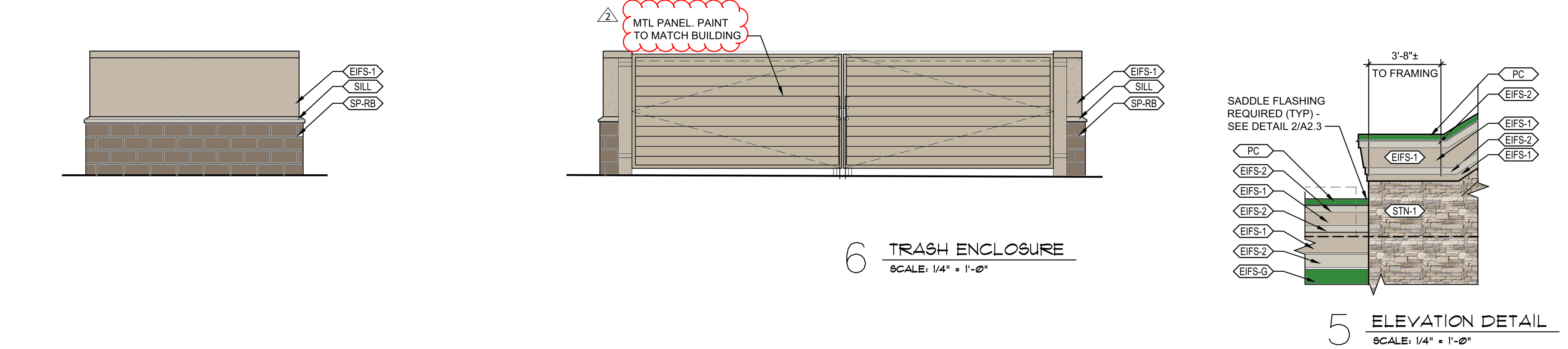
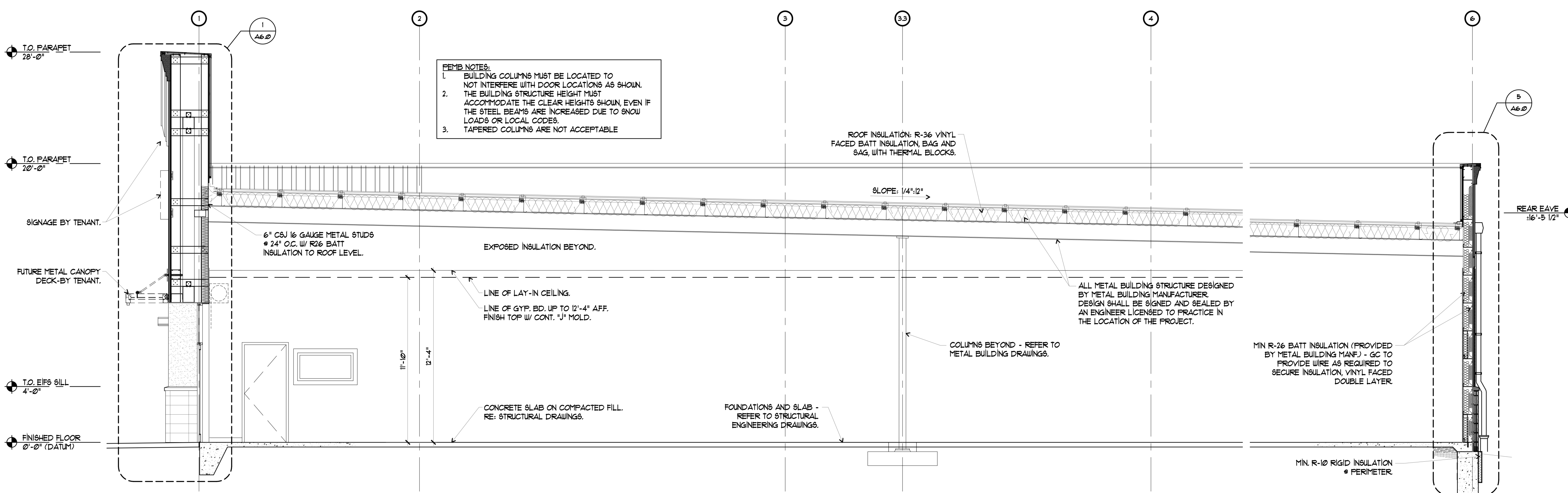
ELEVATION LEGEND

KEYNOTE	HATCH	DESCRIPTION	COLOR
SP-RB	[Hatch]	SPLIT FACED CMU VENEER - RUNNING BOND	SHERWIN WILLIAMS - 'VIRTUAL TAUPE' - SW7039
SP-SB	[Hatch]	SPLIT FACED CMU VENEER - STACKED BOND	SHERWIN WILLIAMS - 'VIRTUAL TAUPE' - SW7039
EFS-1	[Hatch]	EIFS - COLOR 1 (FINISH - PRODUCT STO 310)	STO 'SANDSTONE' 93860 (NA10-0052)
EFS-2	[Hatch]	EIFS - COLOR 2 (FINISH - PRODUCT STO 310)	STO 'SMOKED PUTTY' 93240 (NA10-0053)
EFS-3	[Hatch]	EIFS - ACCENT COLOR (FINISH - PRODUCT STOUT 1300)	STO SW 'ENVY' SW6925 (NA10-0054)
BRK-1	[Hatch]	THIN BRICK	GLEN-GERY ROME GREY SMOOTH OR EQ
STN-1	[Hatch]	CULTURED STONE	COUNTRY LEDGESTONE - ASHFALL OR EQ
RE-1	[Hatch]	3"-24 GAUGE DOUBLE LOK GALVALUME METAL ROOF SYSTEM	SOLAR WHITE
SLL	[Hatch]	3 3/8" x 3 5/8" EIFS SILL W/ BEVEL - SEE DETAIL 1A2.3	STO 'SMOKED PUTTY' 93240 (NA10-0053)
PC-1	[Hatch]	24 GAUGE KYMAR COATED METAL COPING (PROVIDED BY METAL BUILDING MANF.)	SHERWIN WILLIAMS 'ENVY' SW6925 LVR 18%
DNS	[Hatch]	GALVANIZED METAL DOWNSPOUT (SIZED & PROVIDED BY METAL BUILDING MANF.)	MBCI SIGNATURE 200 - 'LIGHT STONE'
DECK	[Hatch]	3'-0" METAL DECK CANOPY - HANGER ROD SUPPORTED W/ 8" FASCIA - SUPPLIED & INSTALLED BY SIGN VENDOR - CONTRACTOR TO PROVIDE & INSTALL WALL BOLTS (SEE A6.0)	SHERWIN WILLIAMS 'ENVY' SW6925 LVR 18%
SCNC	[Hatch]	LSI LED PATRIOT WALL SCONCE @ 8'-8" A.F.F. (SEE ELECTRICAL)	BRZ - 'BRONZE'
WLPK	[Hatch]	LED EXTERIOR WALL PAK LIGHT @ 12'-0" F.F.F. (SEE ELECTRICAL)	
D&F	[Hatch]	STEEL DOOR & HOLLOW METAL FRAME	SHERWIN WILLIAMS 'BALANCED BEIGE' SW7037
XX		STOREFRONT TYPE (REFER TO SHEET A2.0)	PAINTING NOTES: CMU - (1) COAT OF S-W LOXON BLOCK SURFACER A24W200 (OR EQUAL), (DUMPSTER) (2) COATS OF S-W CONFLX XL ELASTOMERIC HIGH BUILD ENCLOSURE COATING, AS-400 SERIES (OR EQUAL)
XXX		DOOR NUMBER (REFER TO SHEET A2.0)	METAL - (2) COATS OF S-W METALTEX ACRYLIC SEMI-GLOSS (B42 SERIES)
			LINTELS - PAINT STOREFRONT LINTELS PER 'METAL' NOTE ABOVE WITH SHERWIN WILLIAMS 'BALANCED BEIGE' SW7037 AFTER PRIMING WITH (1) COAT OF S-W PRO INDUSTRIAL PRO-CRYL UNIVERSAL PRIMER (B66-310 SERIES)

GENERAL NOTES:

- METAL PANELS, SOFFITS, GUTTERS, AND DOWNSPOUTS ARE TO BE MBCI OR EQUAL. SUBSTITUTED COLORS ARE TO MATCH PROTOTYPE STANDARDS.
- ALL EXPOSED FOUNDATION SHALL BE PAINTED TO MATCH ABOVE SURFACE COLOR. USE SHERWIN WILLIAMS - 'VIRTUAL TAUPE' - SW7039 BELOW BLOCK & SHERWIN WILLIAMS 'BALANCED BEIGE' SW7037 BELOW METAL PANELS.

MATERIALS TOTAL: 8,145 SF
(P) MASONRY - 5,305 SF (65%)
(P) GLAZING - 440 SF (5%)
(S) EIFS - 2,440 SF (29%)



EXPOSED FOUNDATION NOTE:
ALL EXPOSED FOUNDATION SHALL BE PAINTED TO MATCH ABOVE SURFACE COLOR. USE SHERWIN WILLIAMS 'VIRTUAL TAUPE' - SW7039 BELOW BLOCK AND SHERWIN WILLIAMS 'BALANCED BEIGE' SW7037 BELOW PANELS.