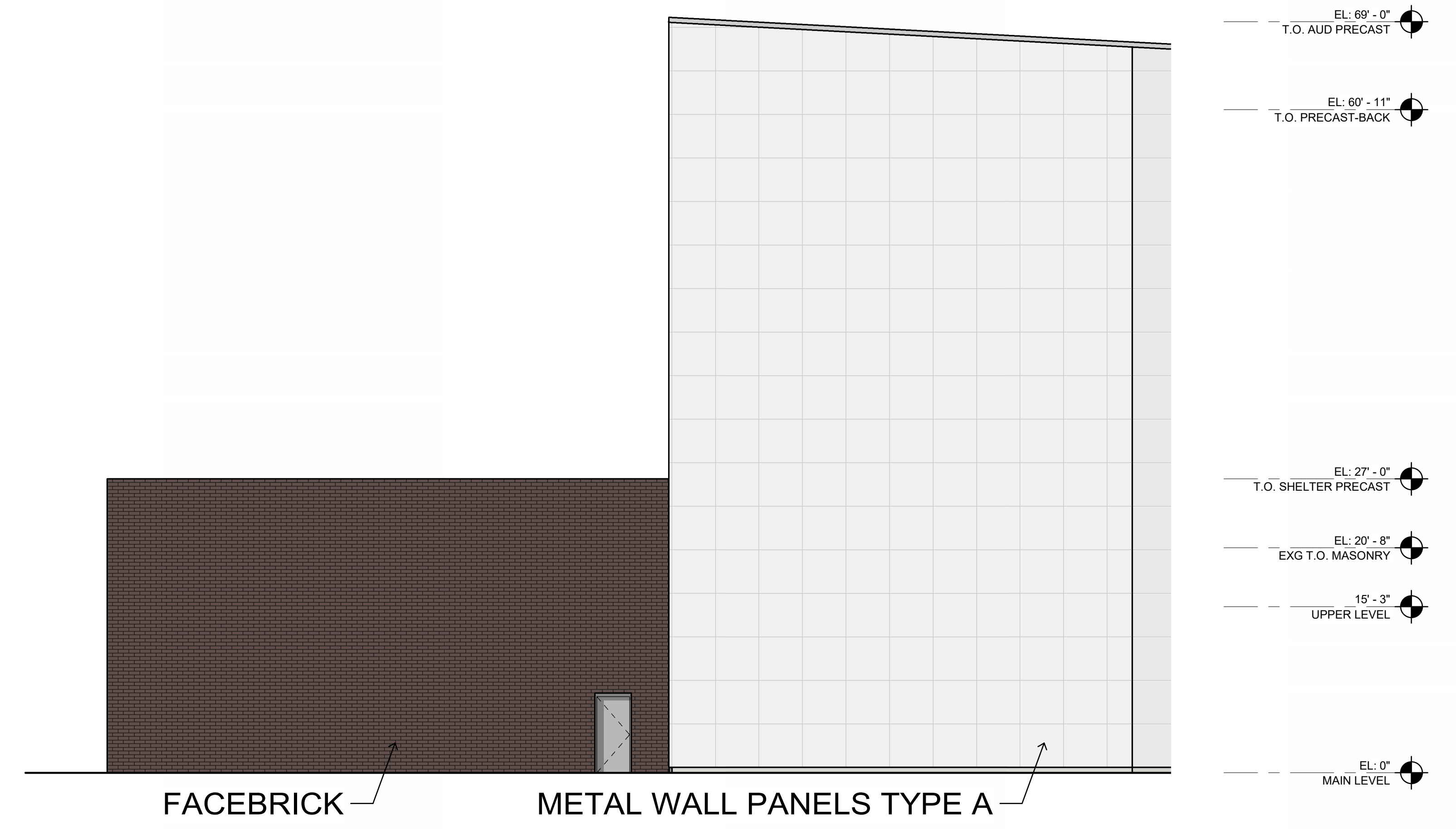
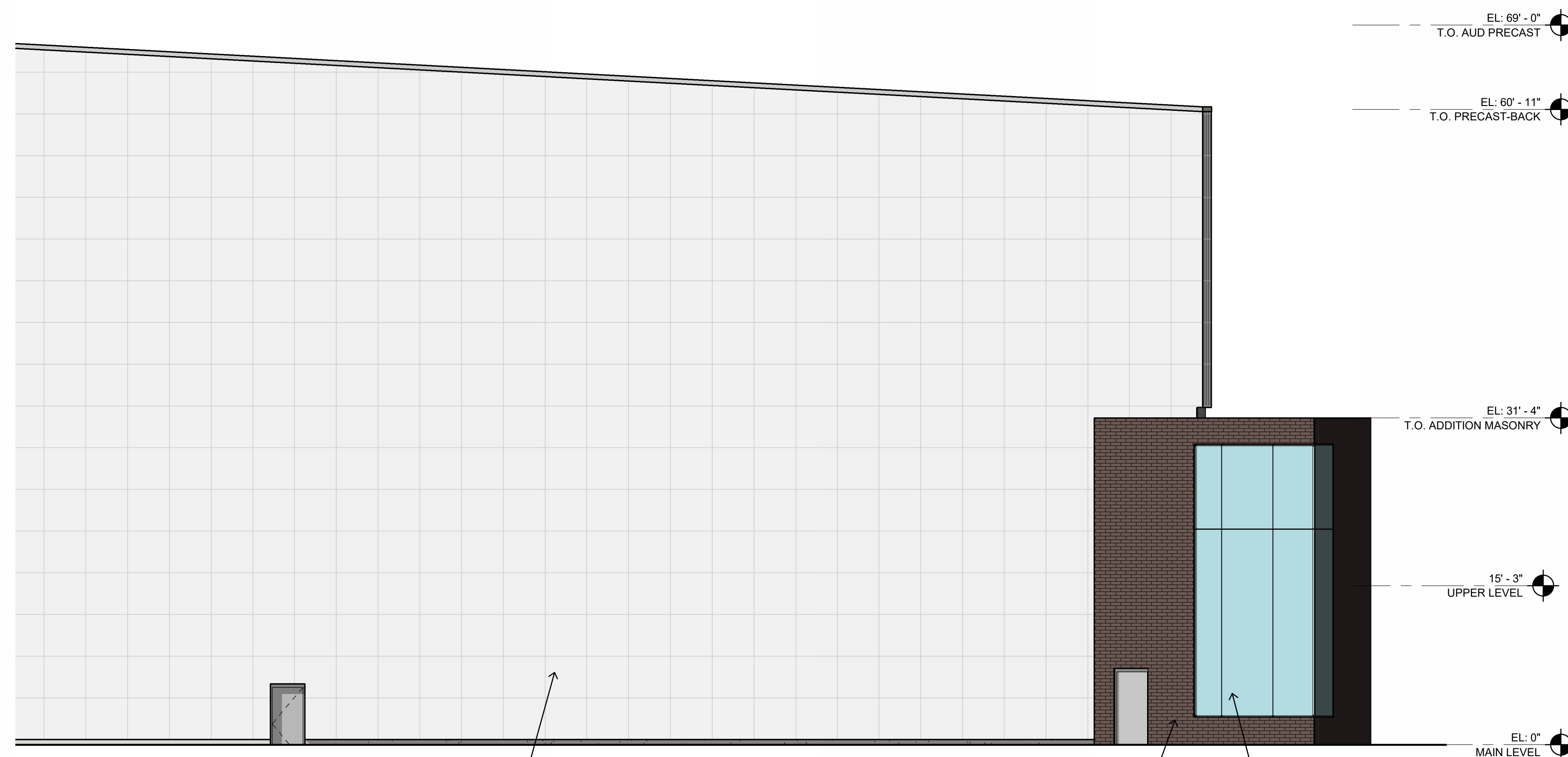


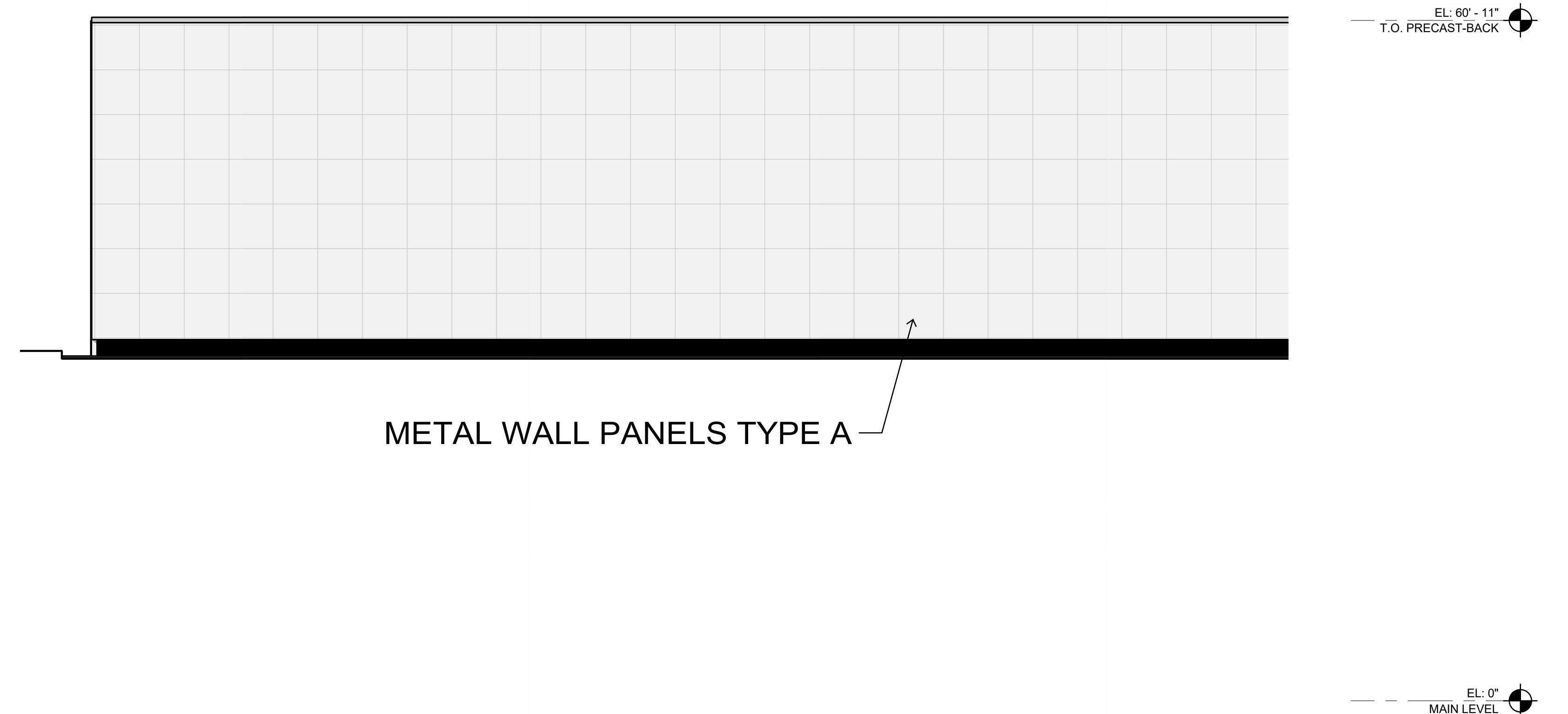
6 EAST ELEVATION  
DD101/ 1/8" = 1'-0"



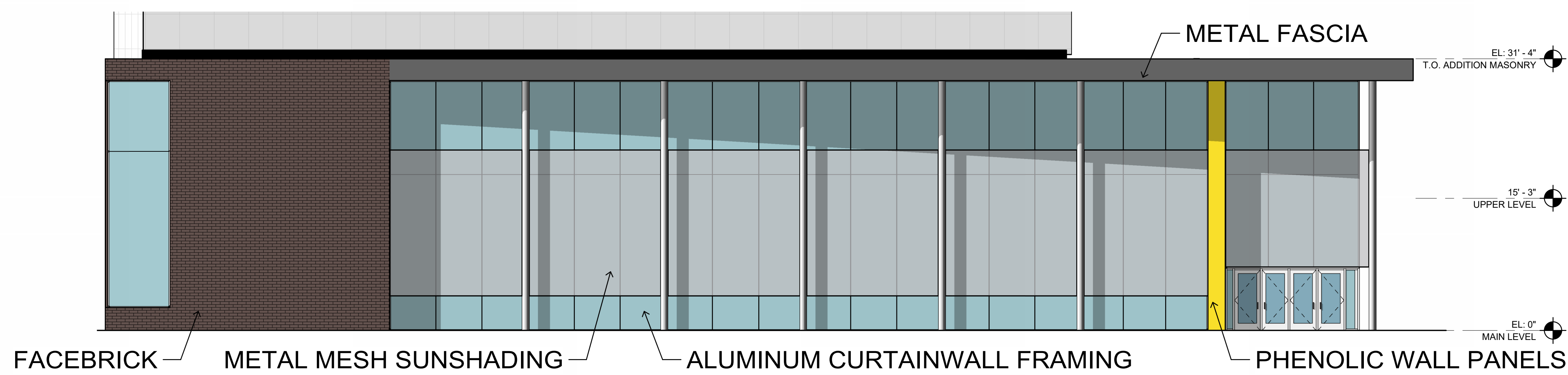
4 NORTH ELEVATION - EAST  
DD101/ 1/8" = 1'-0"



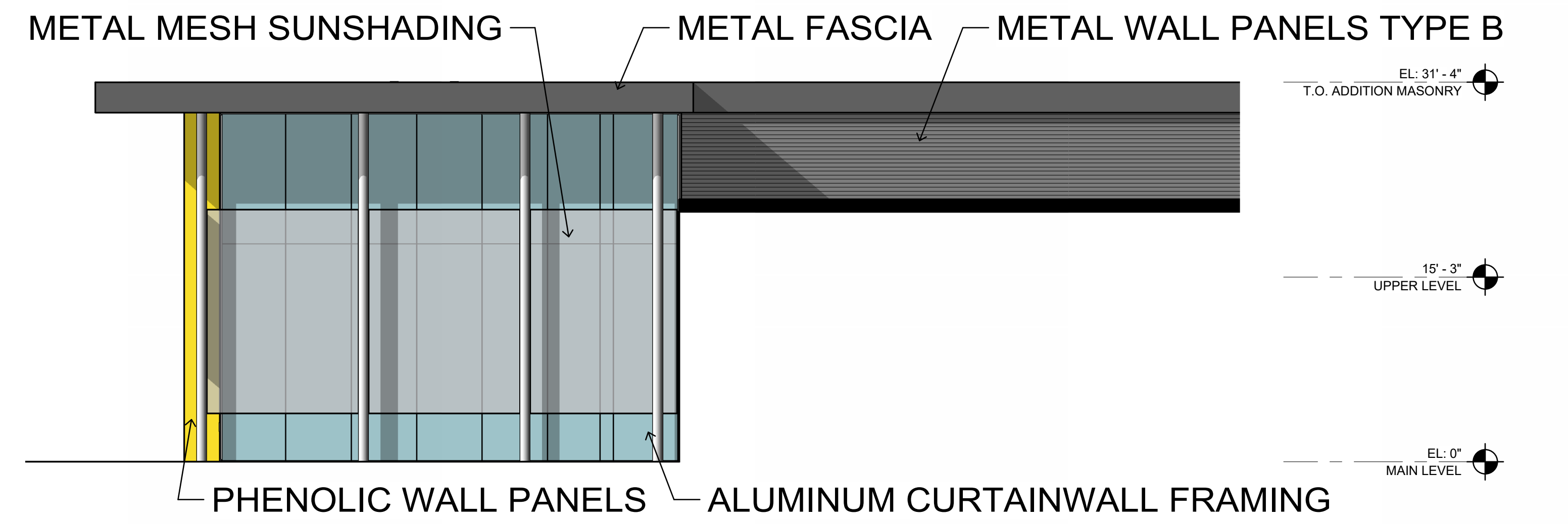
5 NORTH ELEVATION - WEST  
DD101/ 1/8" = 1'-0"



3 WEST ELEVATION  
DD101/ 1/8" = 1'-0"



2 WEST ELEVATION  
DD101/ 1/8" = 1'-0"



1 SOUTH ELEVATION  
DD101/ 1/8" = 1'-0"

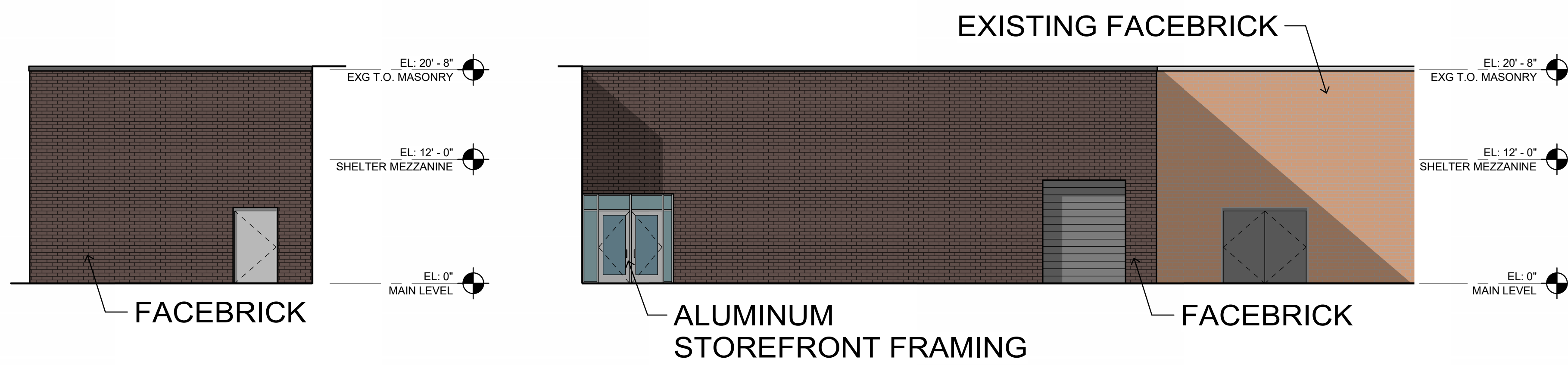
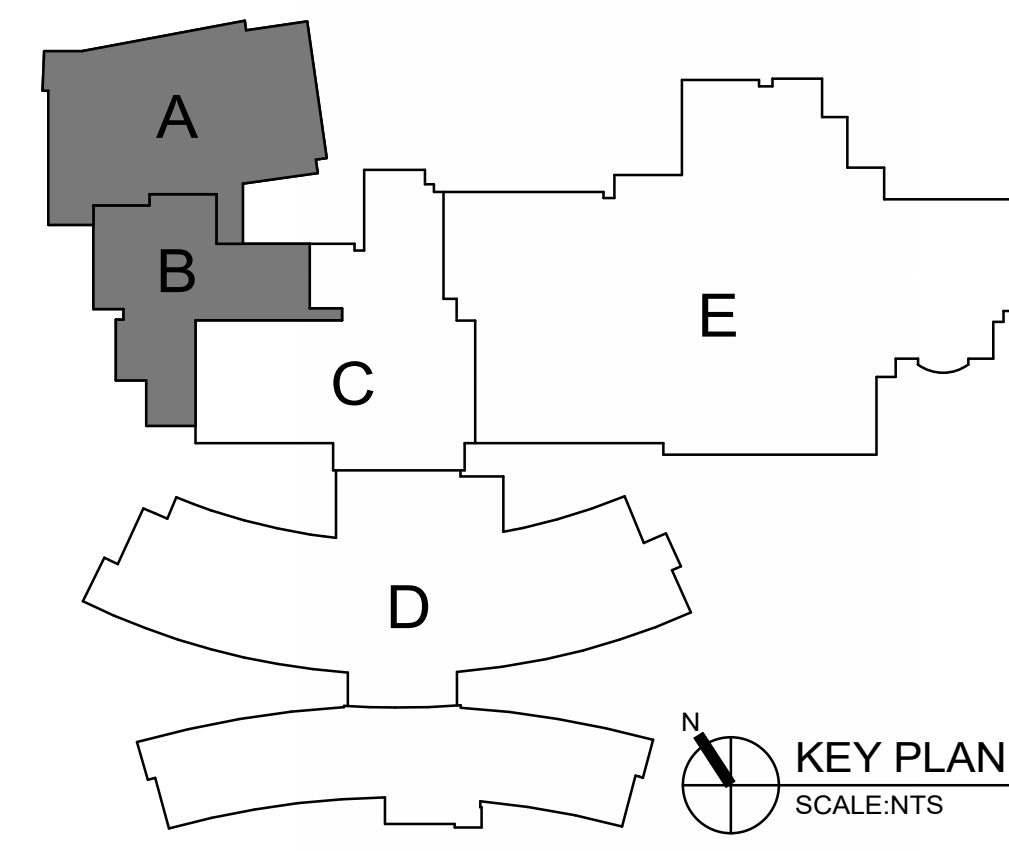
**MATERIAL PERCENTAGES FOR ALL ELEVATIONS**

METAL PANELS & FASCIA - 53.5%

FACEBRICK - 33%

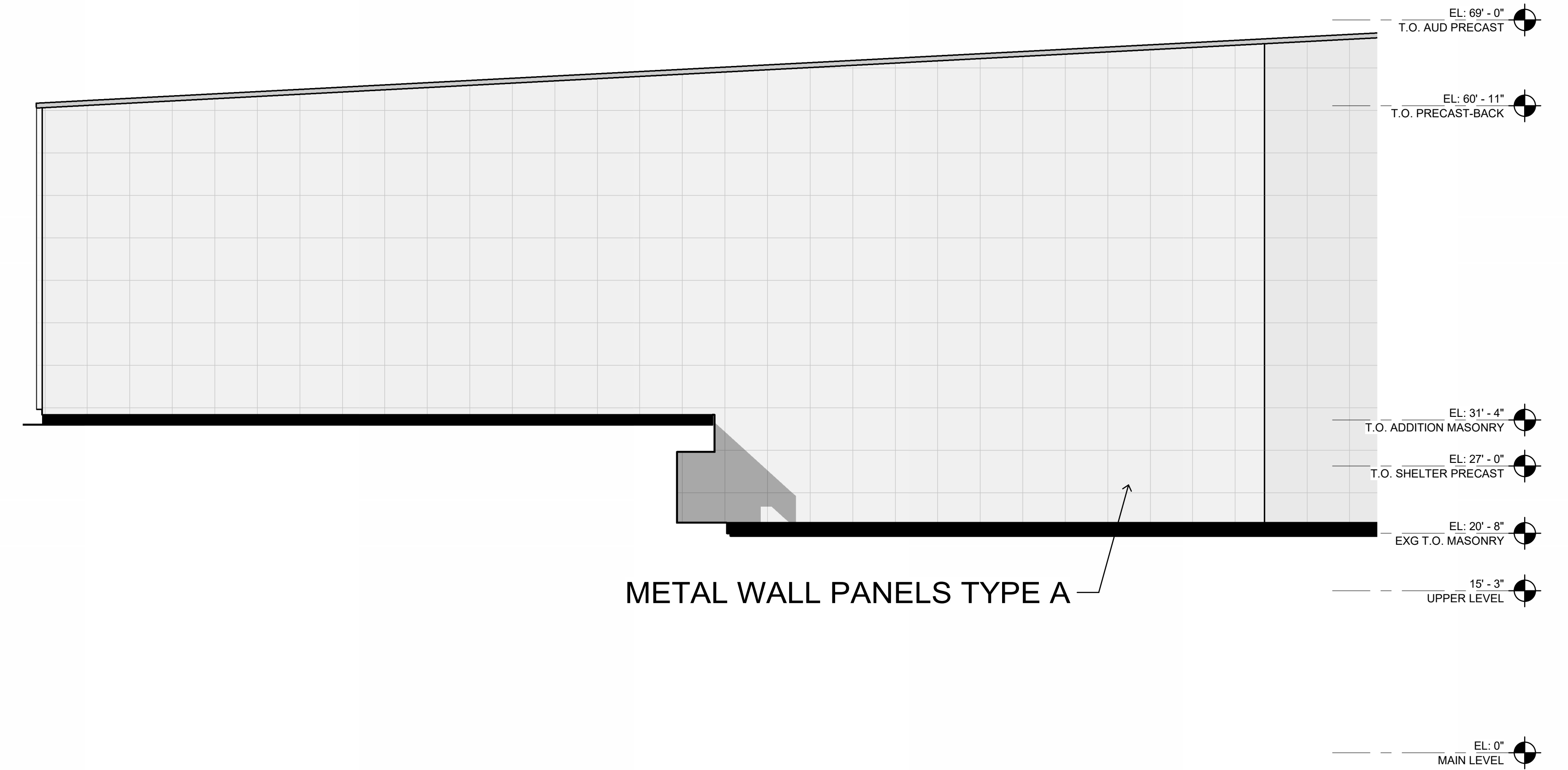
GLAZING - 13.2%

PHENOLIC PANEL - 0.3%

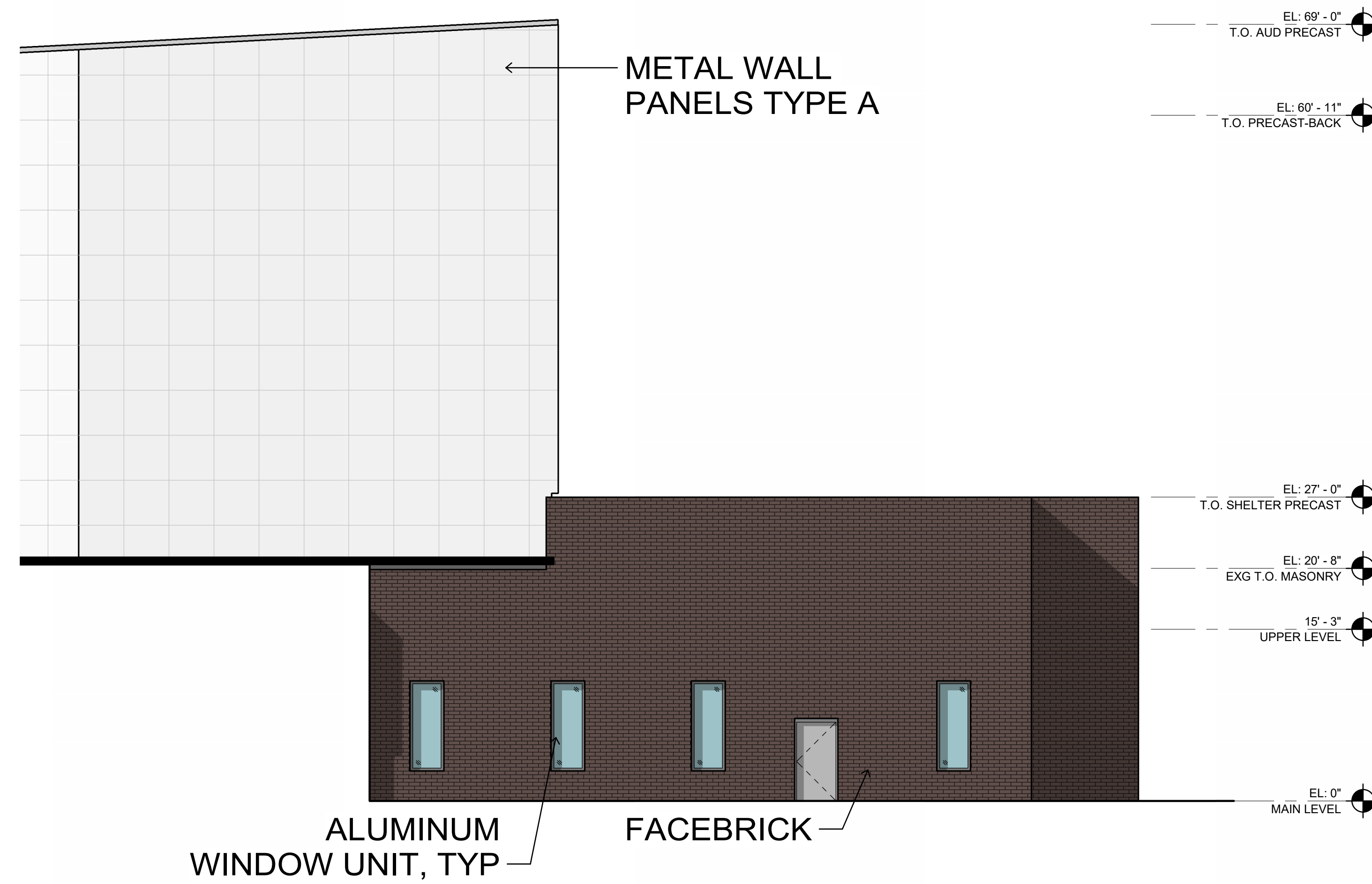


5 SOUTH ELEVATION-ALTERNATE BID  
DD102/ 1/8" = 1'-0"

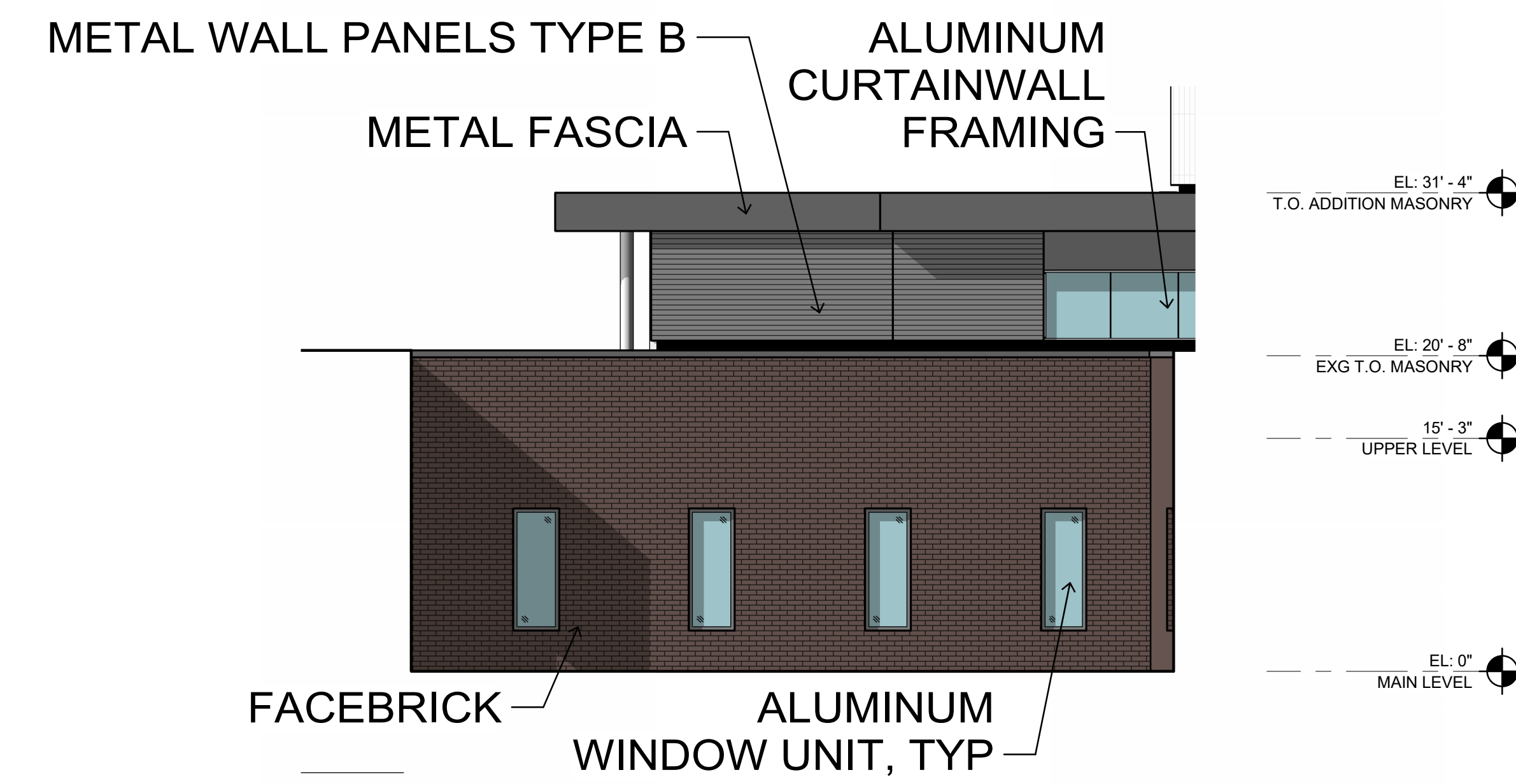
4 WEST ELEVATION - ALT BID  
DD102/ 1/8" = 1'-0"



3 SOUTH ELEVATION  
DD102/ 1/8" = 1'-0"



2 SOUTH ELEVATION  
DD102/ 1/8" = 1'-0"



1 EAST ELEVATION  
DD102/ 1/8" = 1'-0"