



EXTERIOR MATERIALS

- WAUKEE ZONING SECTION 160.07 SITE AND BUILDING DESIGN STANDARDS
- BUILDINGS SHALL BE COMPATIBLE IN ARCHITECTURAL STYLE OR THEME WITH SURROUNDING BUILDINGS.
 - BUILDINGS SHALL BE DESIGNED WITH EMPHASIS PLACED UPON PROMOTING INTEREST ON THOSE FACADES FACING A PUBLIC STREET RIGHT-OF-WAY AND BREAKING UP LONG EXPANSES OF CONTINUOUS WALLS WITH SPECIFIC CONSIDERATION GIVEN TO THE TREATMENT OF ENTRANCES, DOORS, AND WINDOW AREAS.
 - BUILDINGS WITHIN THE INDUSTRIAL DISTRICT SHALL BE DESIGNED UTILIZING PRIMARY MATERIALS ON THOSE ELEVATIONS FACING A PUBLIC STREET RIGHT-OF-WAY INCLUDING:
 - ALUMINUM COMPOSITE MATERIALS
 - BRICK
 - CAST STONE
 - GLASS
 - PLATE CLADDING SYSTEM
 - PRECAST CONCRETE PANELS
 - FIBER CEMENT SIDING
 - SECONDARY MATERIALS USED ON THE REMAINDER OF THE BUILDING AND COMPROMISING NOT MORE THAN 40 PERCENT OF ALL ELEVATIONS SHALL INCLUDE BUT NOT BE LIMITED TO:
 - ARCHITECTURAL METALS (INSULATED METAL PANELS, CORRUGATED METAL PANELS OR SIMILAR MATERIALS)
 - EIFS
 - SPLIT FACED BRICK
 - STRUCTURAL COMPOSITE SANDWICH PANELING
 - TLING
 - THOSE MATERIALS LISTED AS PRIMARY MATERIALS

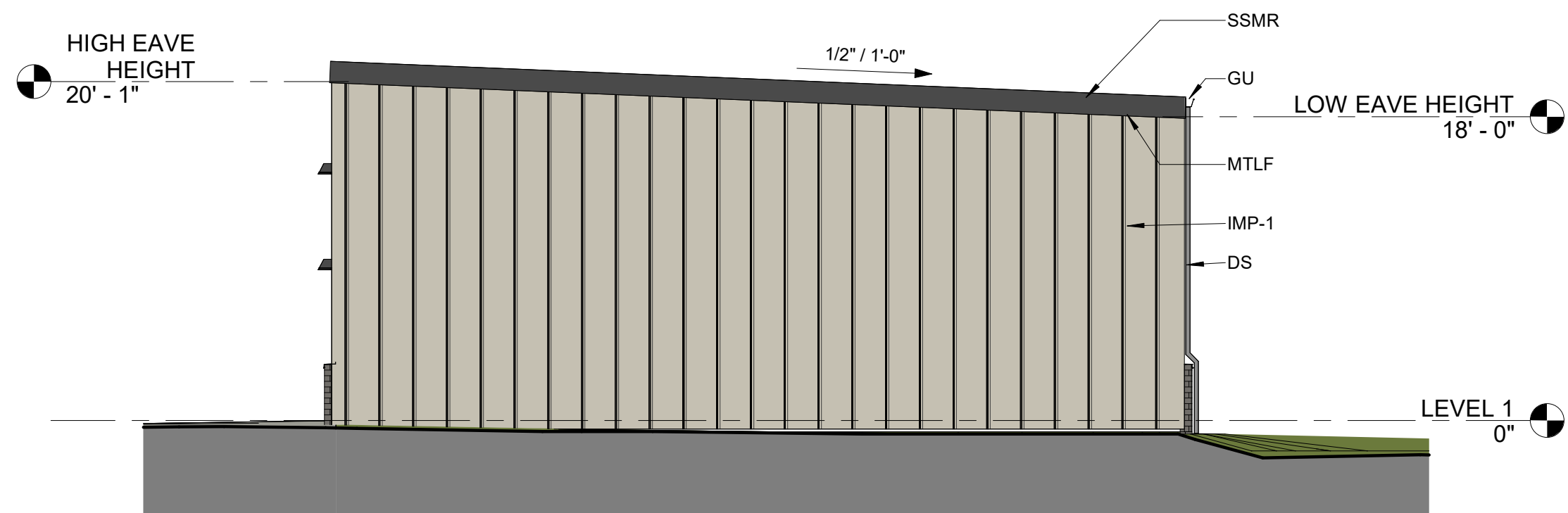
EXTERIOR MATERIALS: SF & PERCENTAGE

	NORTH			SOUTH			EAST			WEST		
	SF	%	CLASS	SF	%	CLASS	SF	%	CLASS	SF	%	CLASS
BRICK VENEER				171	18	P	199	12	P	337	19	P
INSULATED METAL PANELS	962	100	S	730	76	S	1308	81	S	1474	81	S
GLASS				64	6	P	100	7	P			
TOTALS	962	100		965	100		1607	100		1811	100	

EXTERIOR MATERIALS

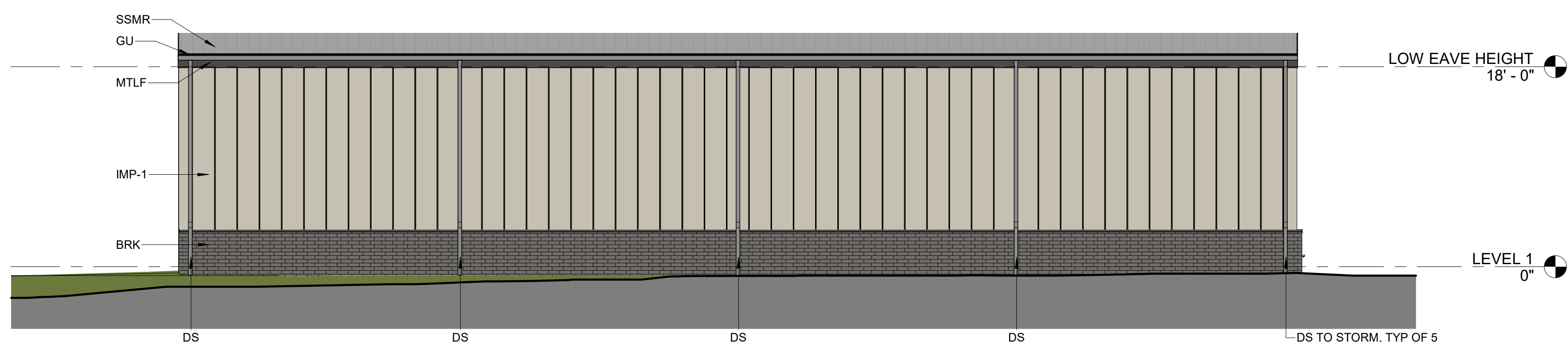
ABBREVIATION	MATERIAL	COLOR	MODEL/STYLE	MANUFACTURER*
BRK	BRICK MASONRY	EBONITE VELOUR	UTILITY	SIoux CITY BRICK
IMP-1	INSULATED METAL PANEL	LIMESTONE	FORMAWALL DIMENSION	CENTRIA
IMP-2	INSULATED METAL PANEL	CHARCOAL GRAY	FORMAWALL DIMENSION	CENTRIA
WDW	ALUMINUM FRAMED WINDOW	BLACK	2" X 4 1/2" FRAMING	KAWNEER
SF	ALUMINUM FRAMED STOREFRONT	BLACK	2" X 4 1/2" FRAMING	KAWNEER
SSMR	STANDING SEAM METAL ROOF	CHARCOAL	CFR	NUCOR
OHD	OVERHEAD DOOR	GRAY	THERMACORE 596	OVERHEAD DOOR
MTLF	METAL FASCIA	CHARCOAL	COLOR TO MATCH ROOF	
H MDF	HOLLOW METAL DOOR AND FRAME	CHARCOAL	COLOR TO MATCH ROOF	
GU	METAL GUTTER	CHARCOAL	COLOR TO MATCH ROOF	
DS	METAL DOWNSPOUT	CHARCOAL	COLOR TO MATCH ROOF	

*MANUFACTURERS LISTED ARE BASIS OF DESIGN. OTHER EQUIVALENT MANUFACTURERS MAY BE USED.



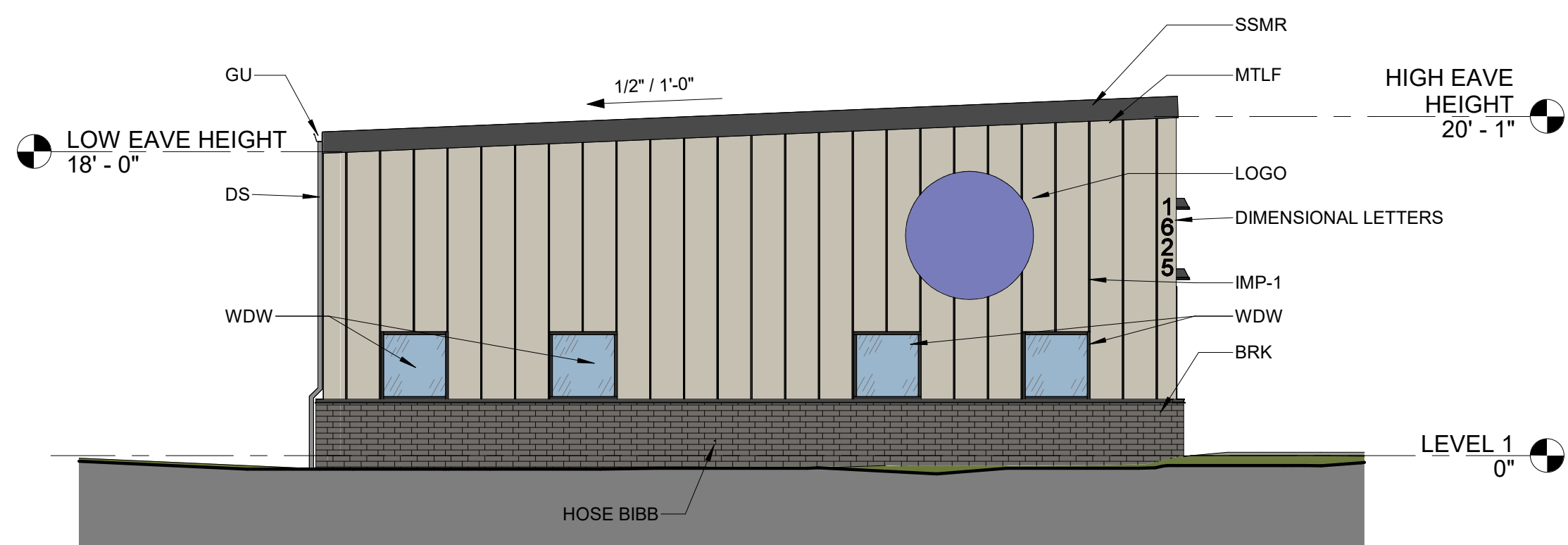
4 EXTERIOR ELEVATION - NORTH

SCALE: 1/8" = 1'-0"



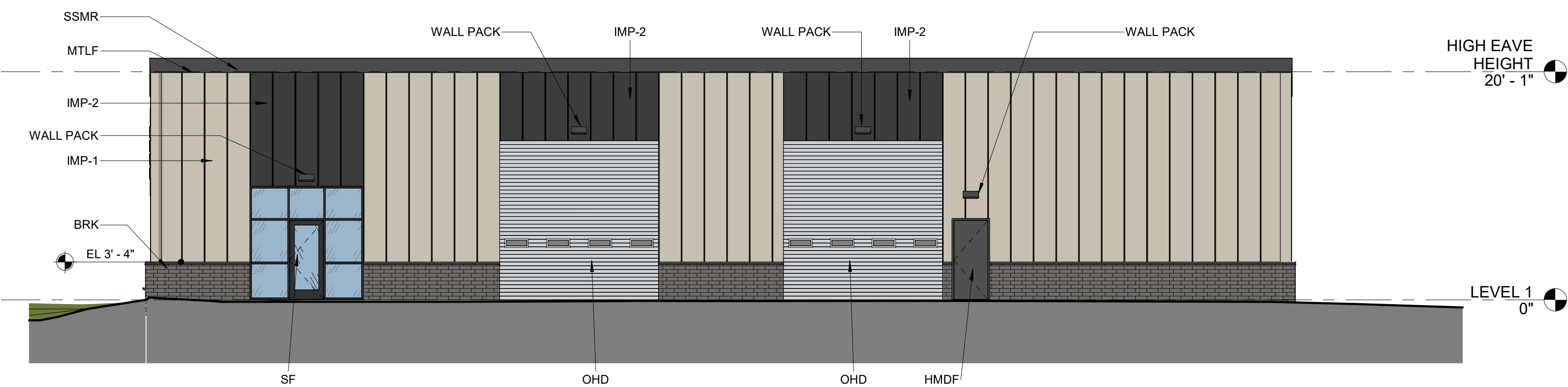
3 EXTERIOR ELEVATION - WEST

SCALE: 1/8" = 1'-0"



2 EXTERIOR ELEVATION - SOUTH

SCALE: 1/8" = 1'-0"



1 EXTERIOR ELEVATION - EAST

SCALE: 1/8" = 1'-0"



ABOVE PAR TECH WAREHOUSE

1625 NW GETTYSBURG LN
WAUKEE, IA 50263

ISSUANCE

CITY SUBMITTAL
02/02/2024

REVISIONS
02/21/2024 2ND CITY SUBMITTAL
03/07/2024 3RD CITY SUBMITTAL

NOT FOR CONSTRUCTION

THESE DOCUMENTS HAVE BEEN PREPARED SPECIFICALLY FOR THE ABOVE REFERENCED PROJECT. THEY ARE NOT SUITABLE FOR USE ON OTHER PROJECTS OR IN OTHER LOCATIONS WITHOUT THE EXPRESS WRITTEN APPROVAL AND PARTICIPATION OF SVPA ARCHITECTS INC. REPRODUCTION IS PROHIBITED.

© 2024

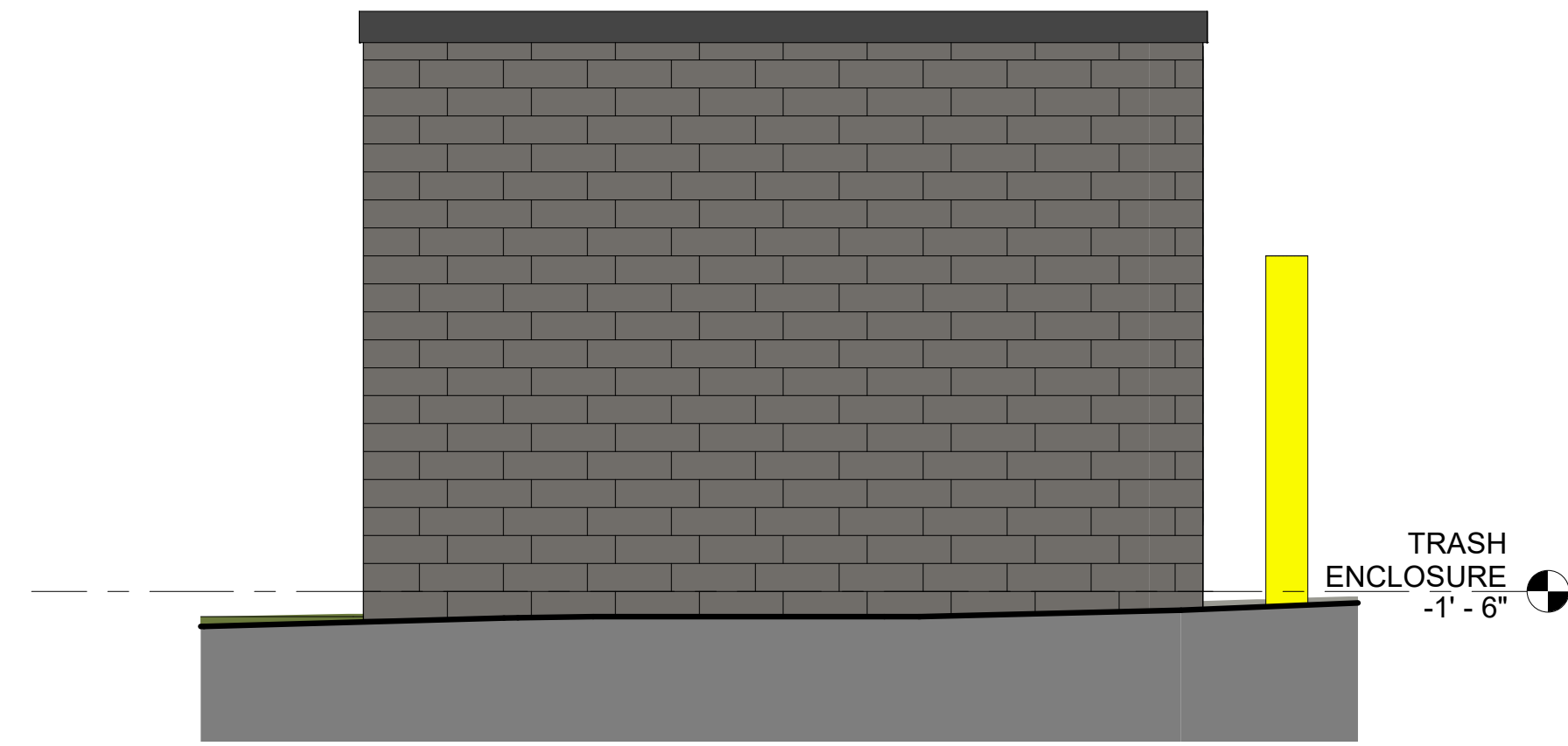
PROJECT NUMBER

24003

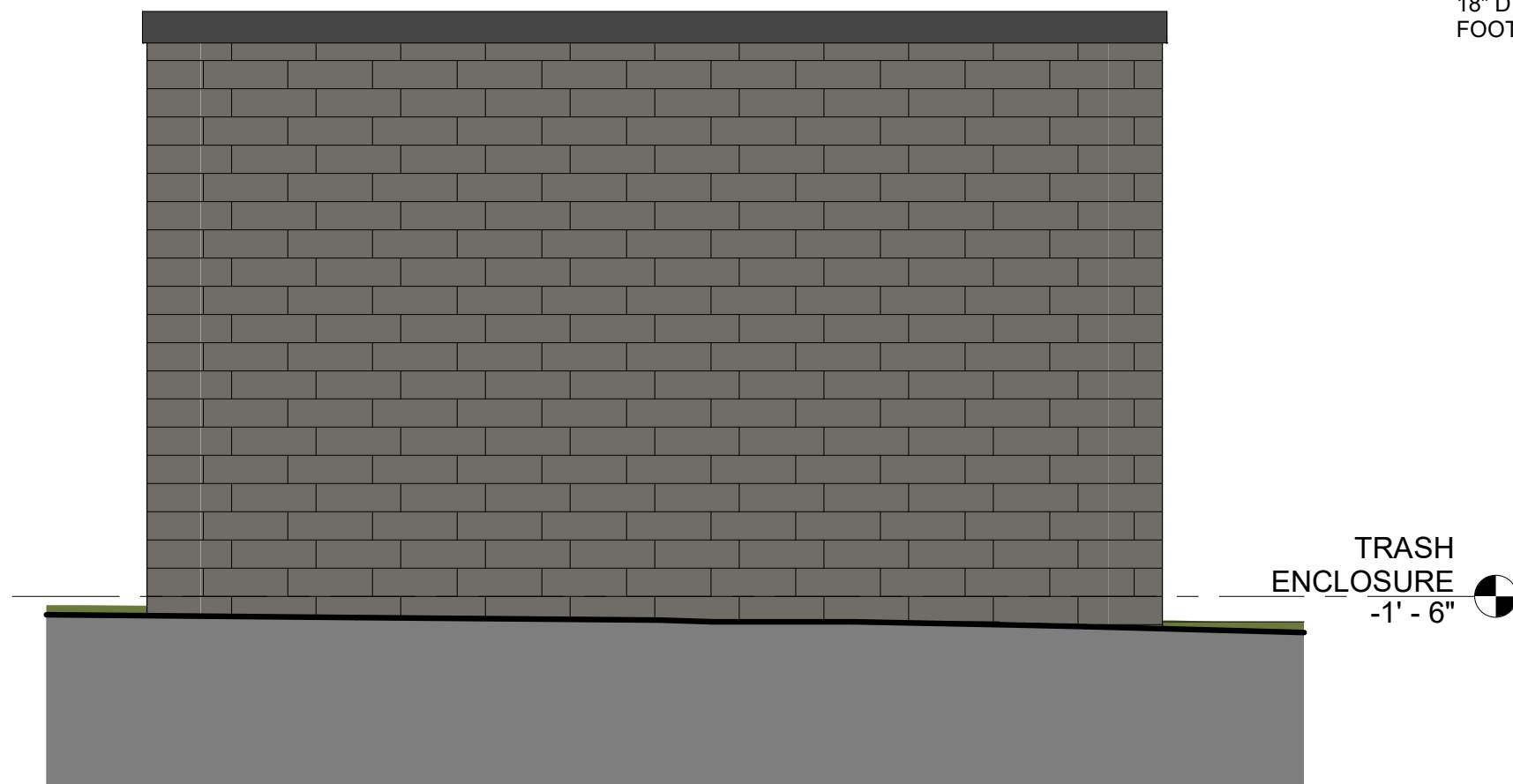
EXTERIOR ELEVATIONS

A200

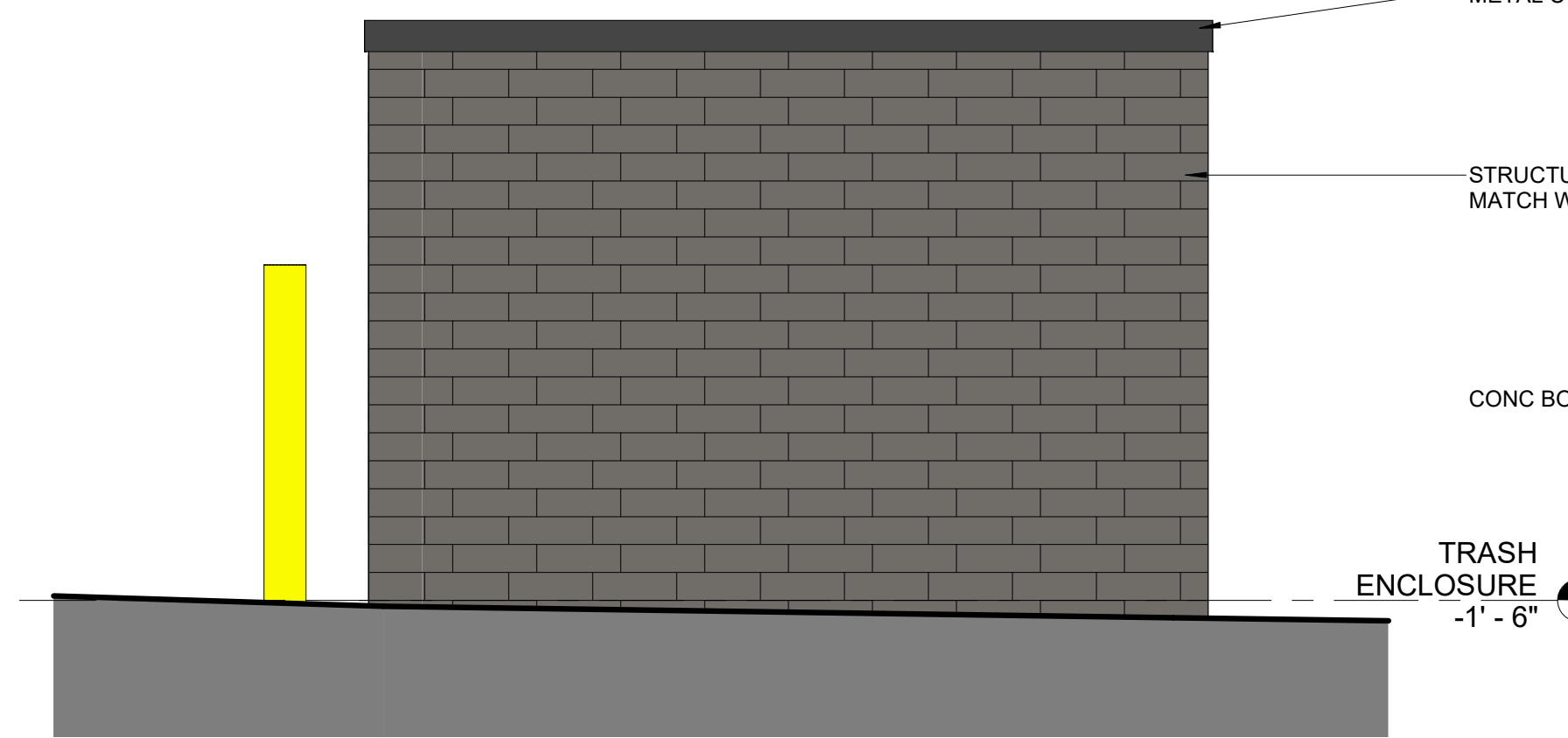
3/7/2024 2:28:37 PM
Autodesk Docs://24003_Above Par Tech/24003_Above Par Tech_ARCH_R23.rvt



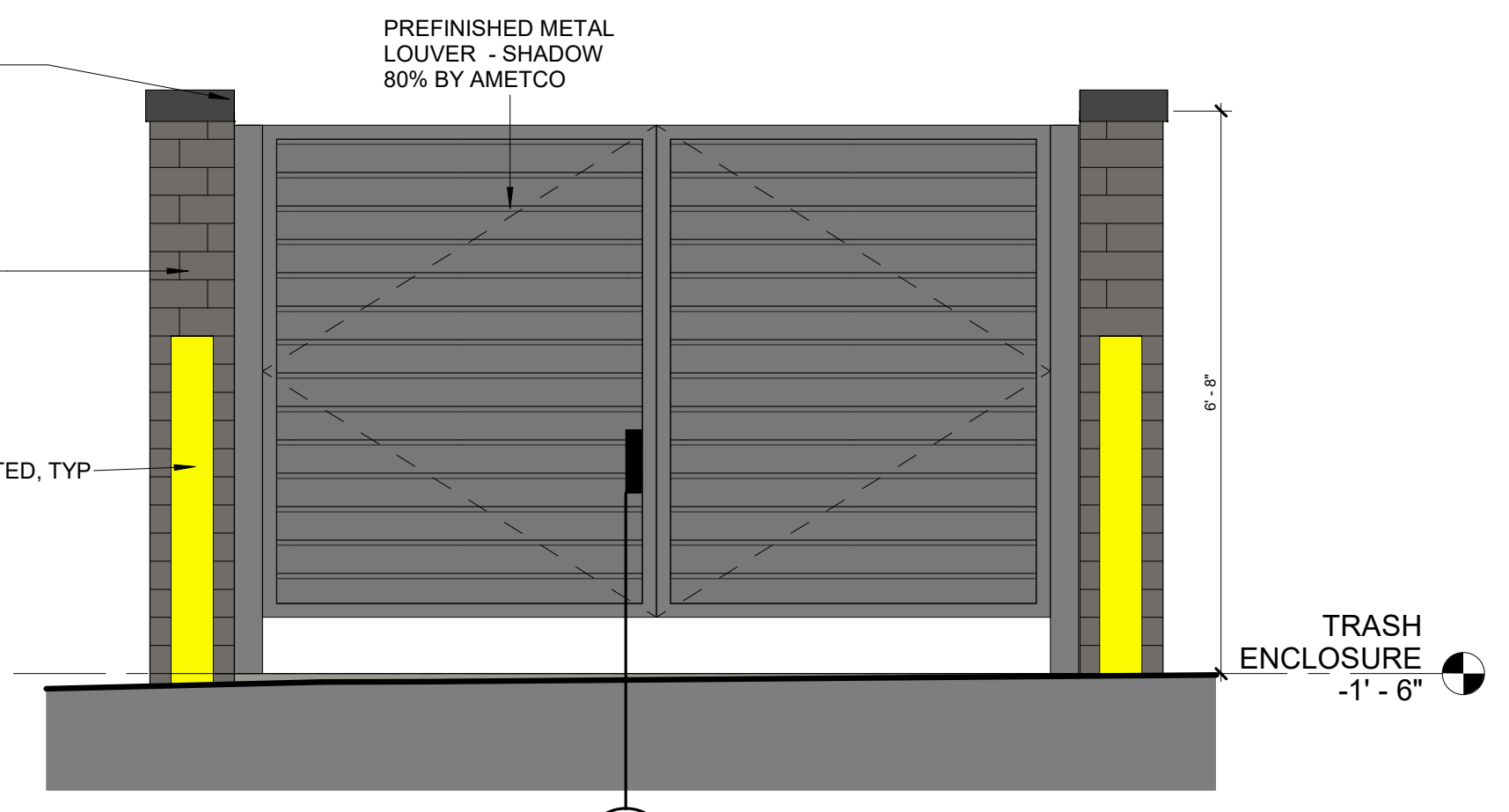
4 NORTH ELEVATION
SCALE: 1/2" = 1'-0"



5 EAST ELEVATION
SCALE: 1/2" = 1'-0"

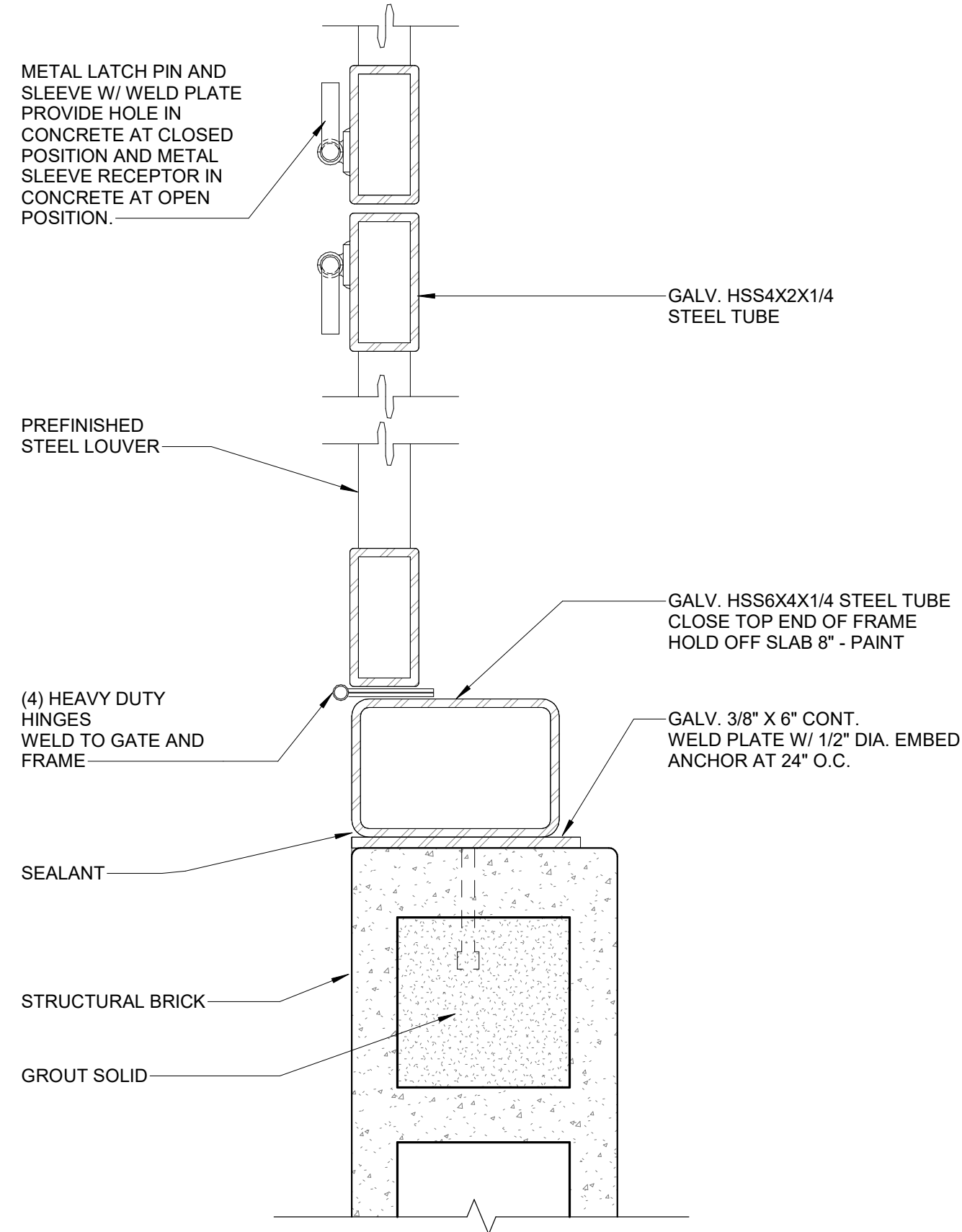


3 SOUTH ELEVATION
SCALE: 1/2" = 1'-0"

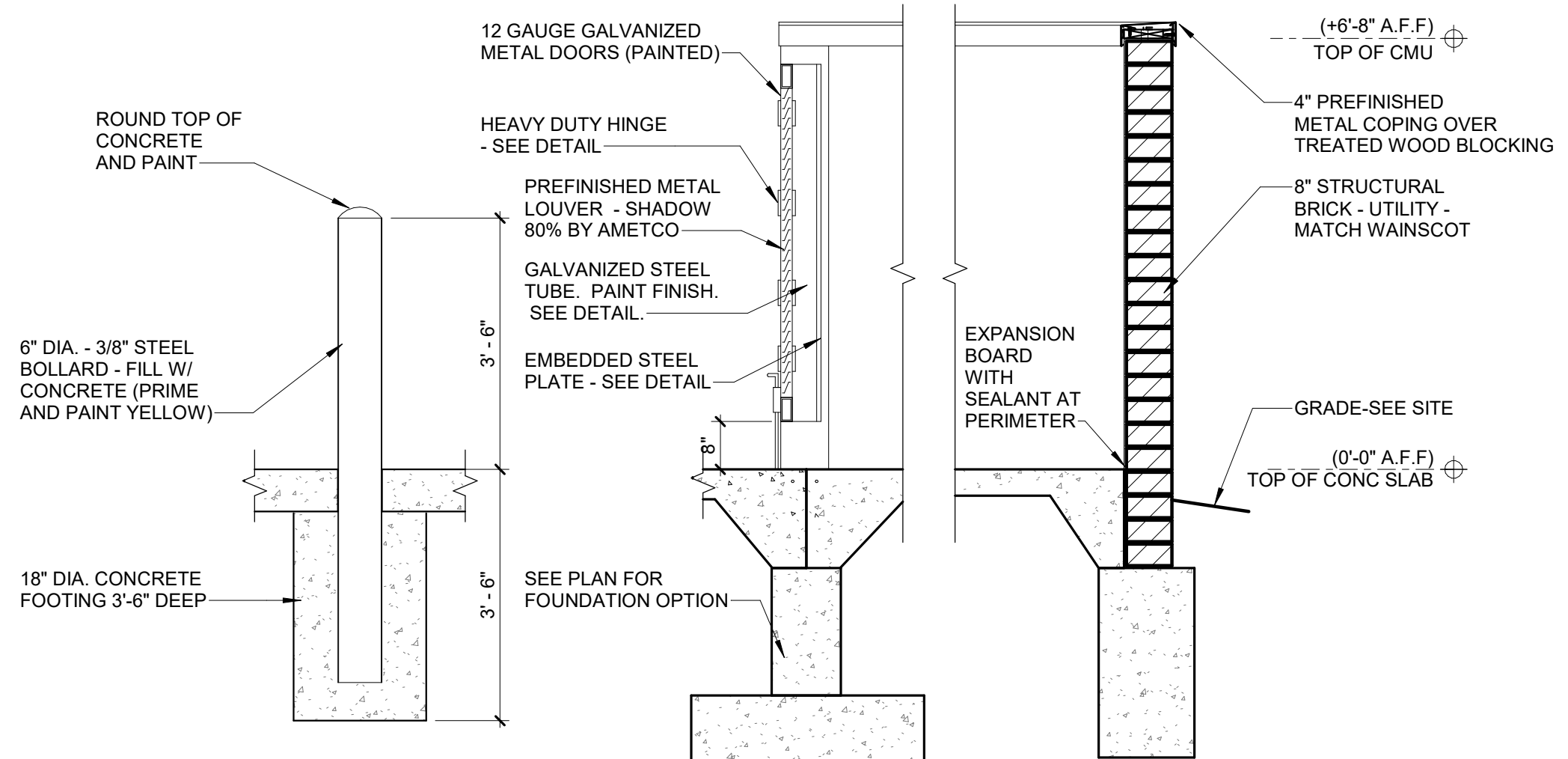
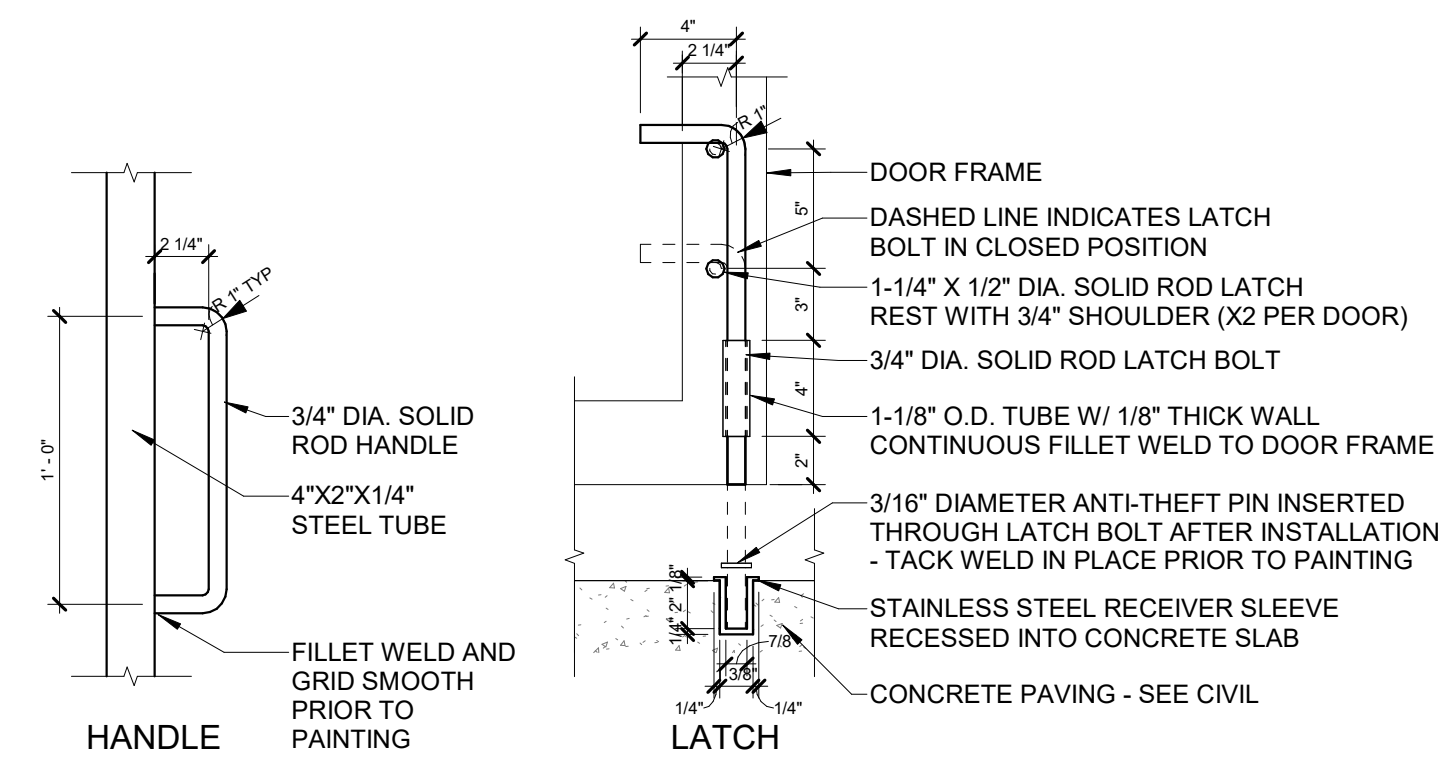


2 WEST ELEVATION
SCALE: 1/2" = 1'-0"

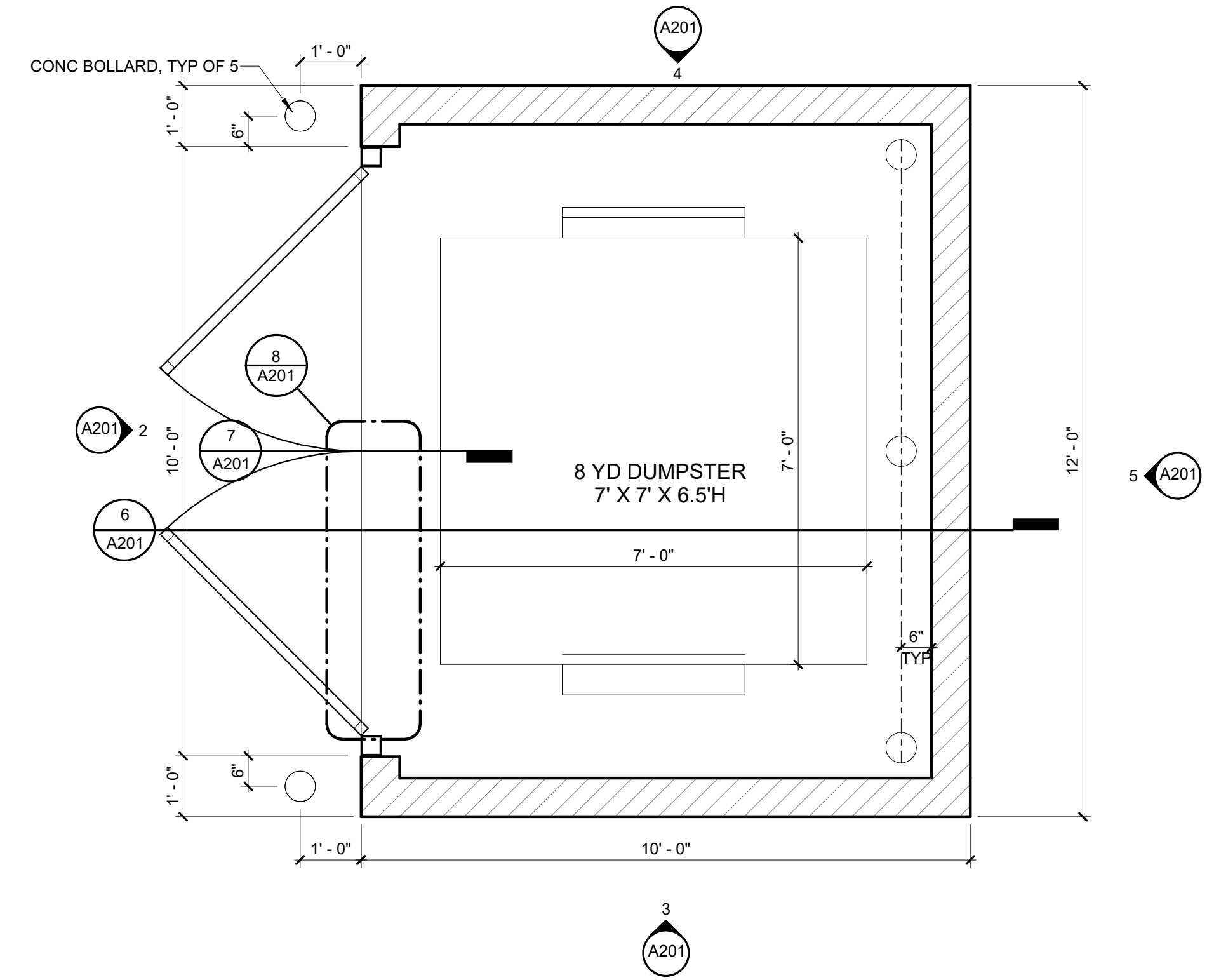
8 TRASH ENCLOSURE DOOR DETAILS
SCALE: 3" = 1'-0"



7 HANDLE / LATCH DETAILS
SCALE: 1 1/2" = 1'-0"



6 TRASH ENCLOSURE SECTION
SCALE: 1/2" = 1'-0"



1 TRASH ENCLOSURE FLOOR PLAN
SCALE: 1/2" = 1'-0"



ABOVE PAR TECH WAREHOUSE

1625 NW GETTYSBURG LN
WAUKEE, IA 50263

ISSUANCE

CITY SUBMITTAL
02/02/2024

REVISIONS
02/21/2024 2ND CITY SUBMITTAL
03/07/2024 3RD CITY SUBMITTAL

NOT FOR CONSTRUCTION

THESE DOCUMENTS HAVE BEEN PREPARED SPECIFICALLY FOR THE ABOVE REFERENCED PROJECT. THEY ARE NOT SUITABLE FOR USE ON OTHER PROJECTS OR IN OTHER LOCATIONS WITHOUT THE EXPRESS WRITTEN APPROVAL AND PARTICIPATION OF SVPA ARCHITECTS INC. REPRODUCTION IS PROHIBITED.

© 2024
PROJECT NUMBER
24003

TRASH ENCLOSURE PLAN, ELEVATIONS AND DETAILS

A201

1466 28th Street, Suite 200 | West Des Moines, Iowa 50266 | 515.327.5990