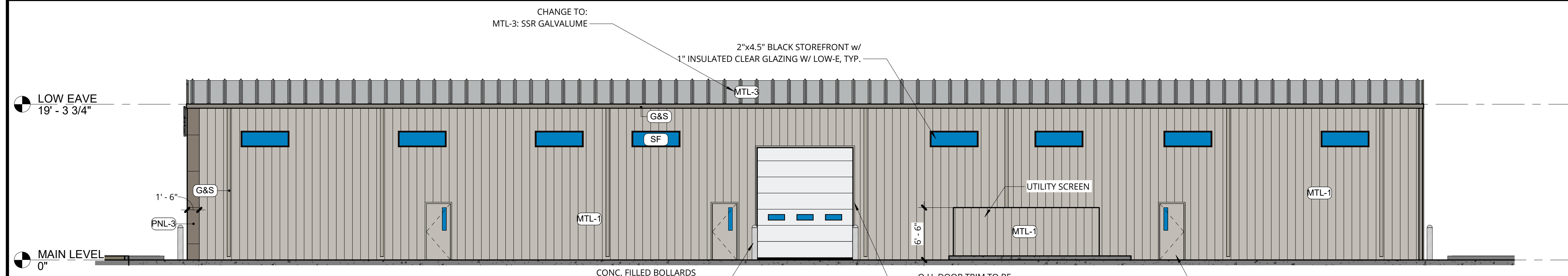
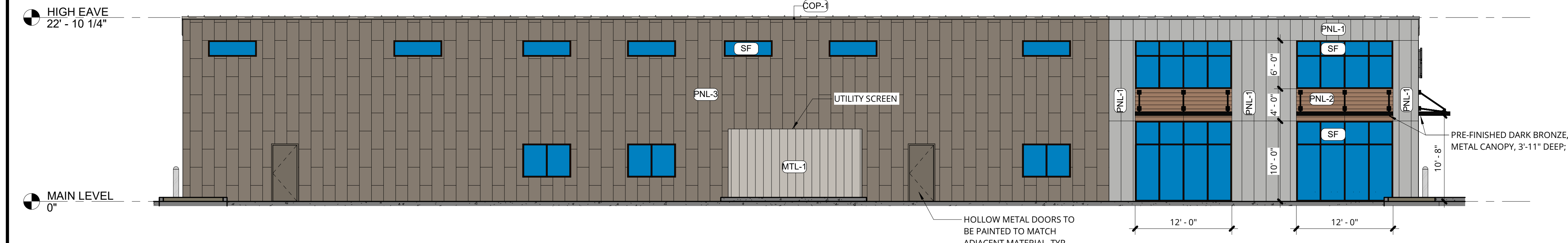


REV #	DESCP.	DATE



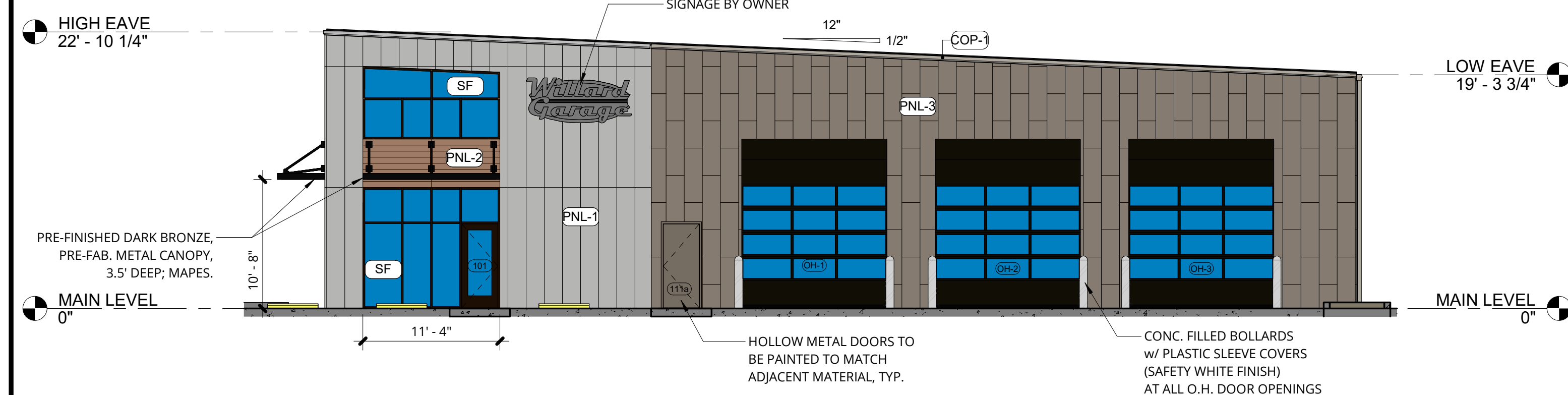
COLOR - EAST ELEVATION

SCALE: 1/8" = 1'-0"



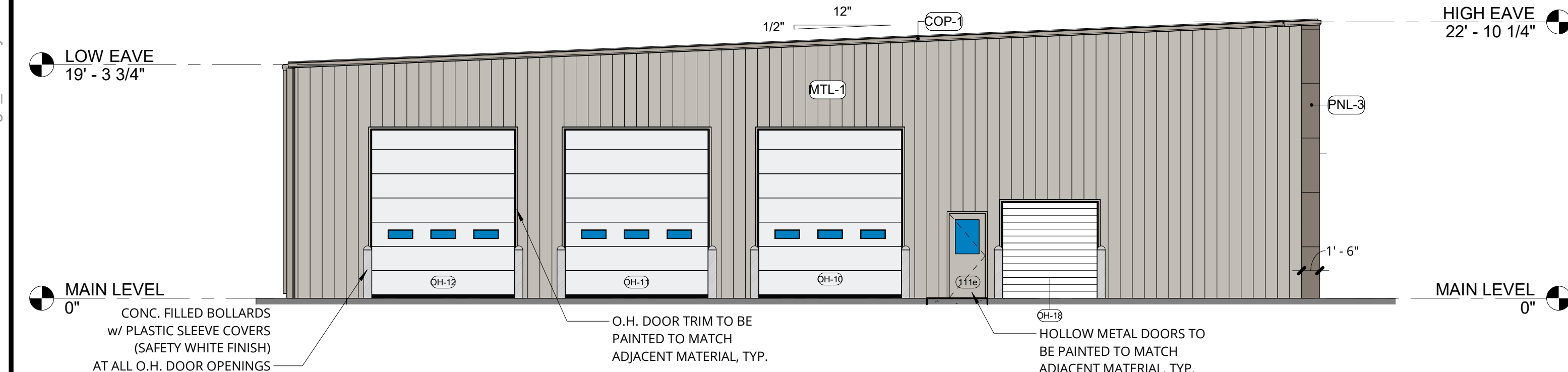
COLOR - WEST ELEVATION

SCALE: 1/8" = 1'-0"



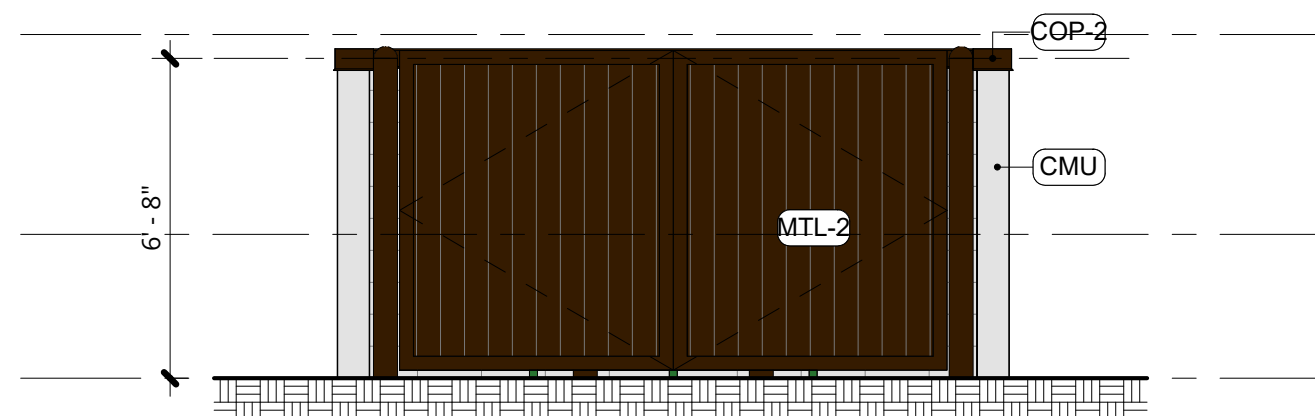
COLOR - SOUTH ELEVATION

SCALE: 1/8" = 1'-0"



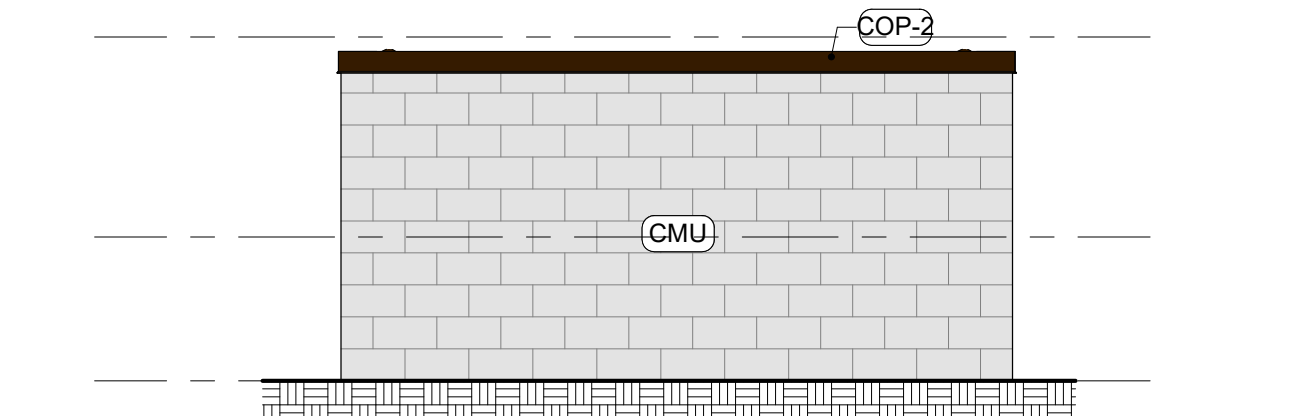
COLOR - NORTH ELEVATION

SCALE: 1/8" = 1'-0"



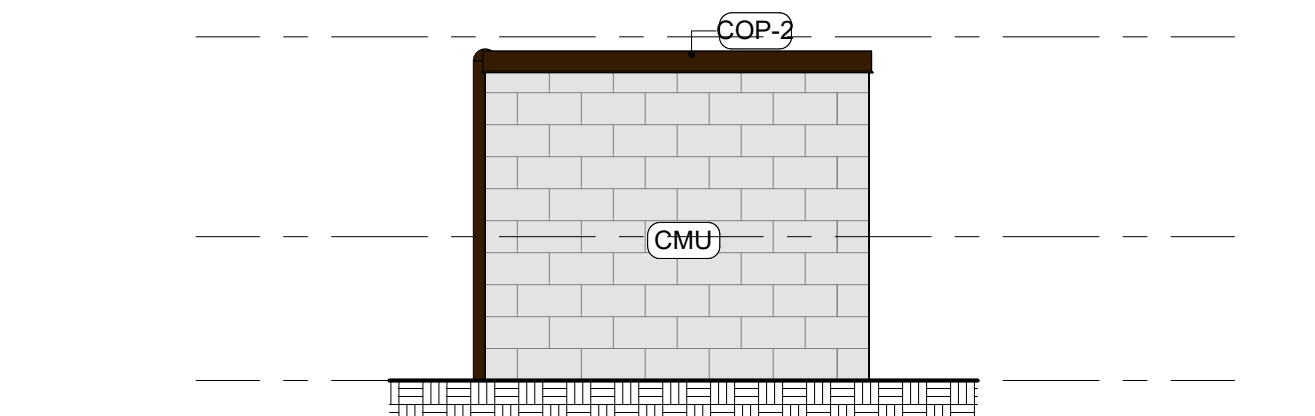
TRASH ENCLOSURE - COLOR ELEVATION - FRONT

SCALE: 1/4" = 1'-0"



TRASH ENCLOSURE - COLOR ELEVATION - BACK

SCALE: 1/4" = 1'-0"



TRASH ENCLOSURE - COLOR ELEVATION - SIDE

SCALE: 1/4" = 1'-0"

MATERIAL LEGEND	
MARK	MATERIAL DESCRIPTION
CMU	SPLIT FACE CMU; 8"x8"x16"; INSTALLED: RUNNING BOND; COLOR: TBD
COP-1	COPING: PRE-FINISHED METAL COPING; COLOR: TO MATCH ADJACENT FACADE MATERIAL
COP-2	COPING: PRE-FINISHED METAL COPING; COLOR: DARK BRONZE
G&S	GUTTER & DOWNSPOUT; PRE-FINISHED METAL TO MATCH "MTL-1"
MTL-1	METAL PANEL: PRE-FINISHED, 26GA. VEE RIBBED METAL PANEL; MANUF.:VP; COLOR: COOL GRANITE GRAY
MTL-2	METAL PANEL: METAL DECK GALVANIZED; INSTALLED: VERTICAL; COLOR: DARK BRONZE
MTL-3	METAL PANEL: STANDING SEAM METAL ROOFING PANELS; COLOR: GALVALUME
PNL-1	CONCRETE PANEL: MANUF.: NICHHA; SERIES: INDUSTRIAL BLOCK; INSTALLED: STACKED; VERTICALLY
PNL-2	CONCRETE PANEL: MANUF.: NICHHA; SERIES: VINTAGEWOOD; COLOR: SPRUCE; INSTALLED: STACKED; HORIZONTAL
PNL-3	CONCRETE PANEL: MANUF.: NICHHA; SERIES: ARCHITECTURAL BLOCK; COLOR: MOCHA; INSTALLED: STAGGERED; VERTICALLY
SF	STOREFRONT: PRE-FINISHED ALUMINUM STOREFRONT; COLOR: DARK BRONZE; GLAZING: CLEAR W/ LOW E

PEMB FINISH NOTE:
ALL PEMB EXTERIOR FINISHES TO BE KYMAR FINISH

EXTERIOR MATERIAL CALCS.

EAST ELEVATION:
TOTAL SF: 2,960
TOTAL SF OF PRIMARY MATERIAL: 125
- MTL-1 @ 1,767 SF = 99% (OF THIS SIDE OF BUILDING)
- PNL-3 @ 28 SF = 1% (OF THIS SIDE OF BUILDING)

WEST ELEVATION:
TOTAL SF: 3,500
TOTAL SF OF PRIMARY MATERIAL: 3,500
- PNL-1 @ 808 SF = 23% (OF THIS SIDE OF BUILDING)
- PNL-2 @ 96 SF = 3% (OF THIS SIDE OF BUILDING)
- PNL-3 @ 2,596 SF = 74% (OF THIS SIDE OF BUILDING)

SOUTH ELEVATION:
TOTAL SF: 1,795
TOTAL SF OF PRIMARY MATERIAL: 31
- PNL-1 @ 567 SF = 32% (OF THIS SIDE OF BUILDING)
- PNL-2 @ 45 SF = 2% (OF THIS SIDE OF BUILDING)
- PNL-3 @ 1,183 SF = 66% (OF THIS SIDE OF BUILDING)

NORTH ELEVATION:
TOTAL SF: 1,795
TOTAL SF OF PRIMARY MATERIAL: 1,795
- MTL-1 @ 1,767 SF = 98% (OF THIS SIDE OF BUILDING)
- PNL-3 @ 34 SF = 2% (OF THIS SIDE OF BUILDING)

TOTAL SF: 10,050
TOTAL SF OF PRIMARY MATERIAL: 5,451
BUILDING TOTAL PERCENTAGE OF PRIMARY MATERIAL: 54%