

PROJECT INFORMATION

NEW BUILDING FOR:
DSDH WAUKEE LLC
 965 SE ALICE'S RD • WAUKEE, IA 50263

PROFESSIONAL SEAL

PRELIMINARY DATES

FEB. 16, 2024
 MAR. 5, 2024
 APR. 3, 2024

JOB NUMBER

240027100

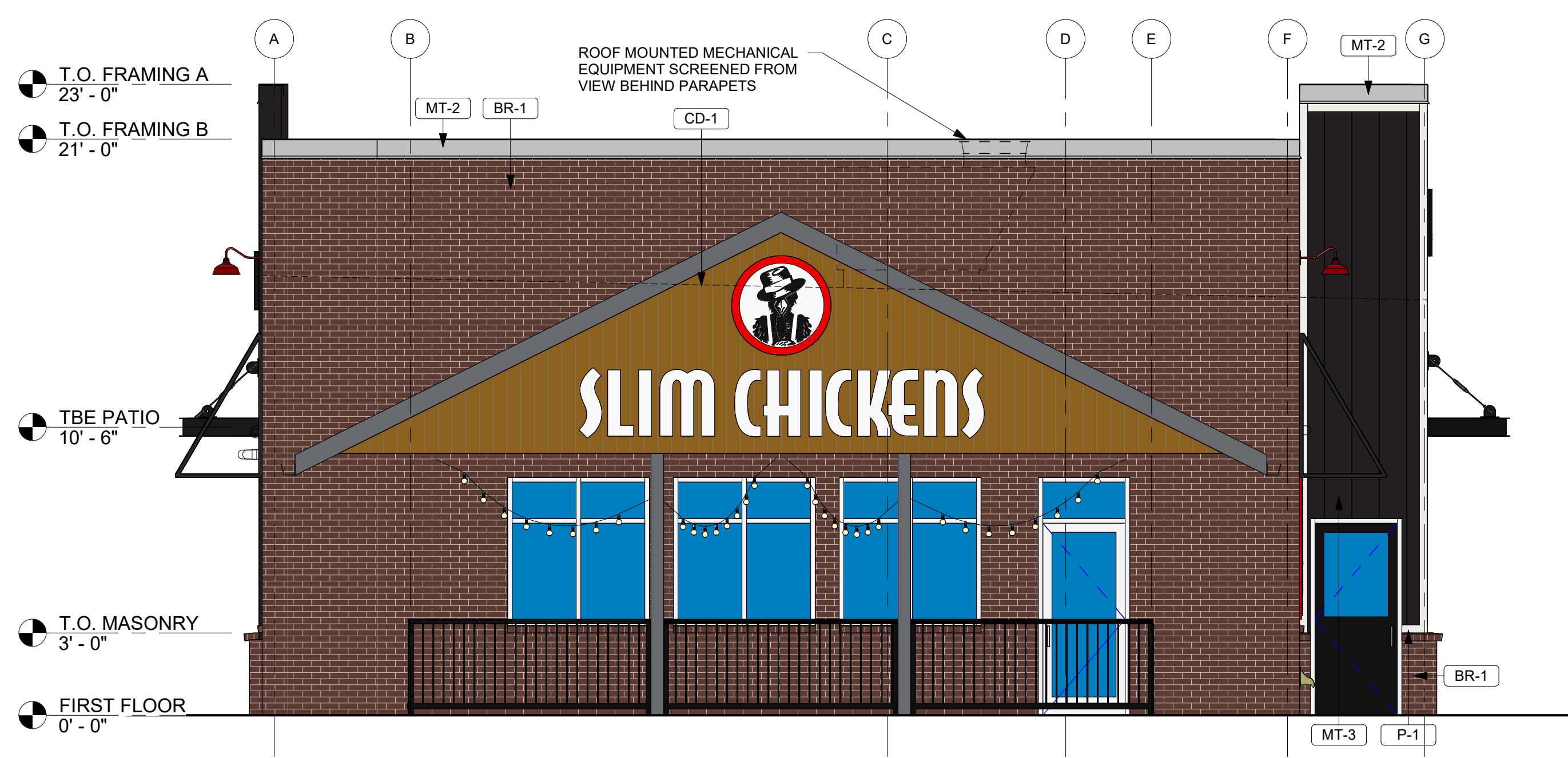
SHEET NUMBER

X2.1

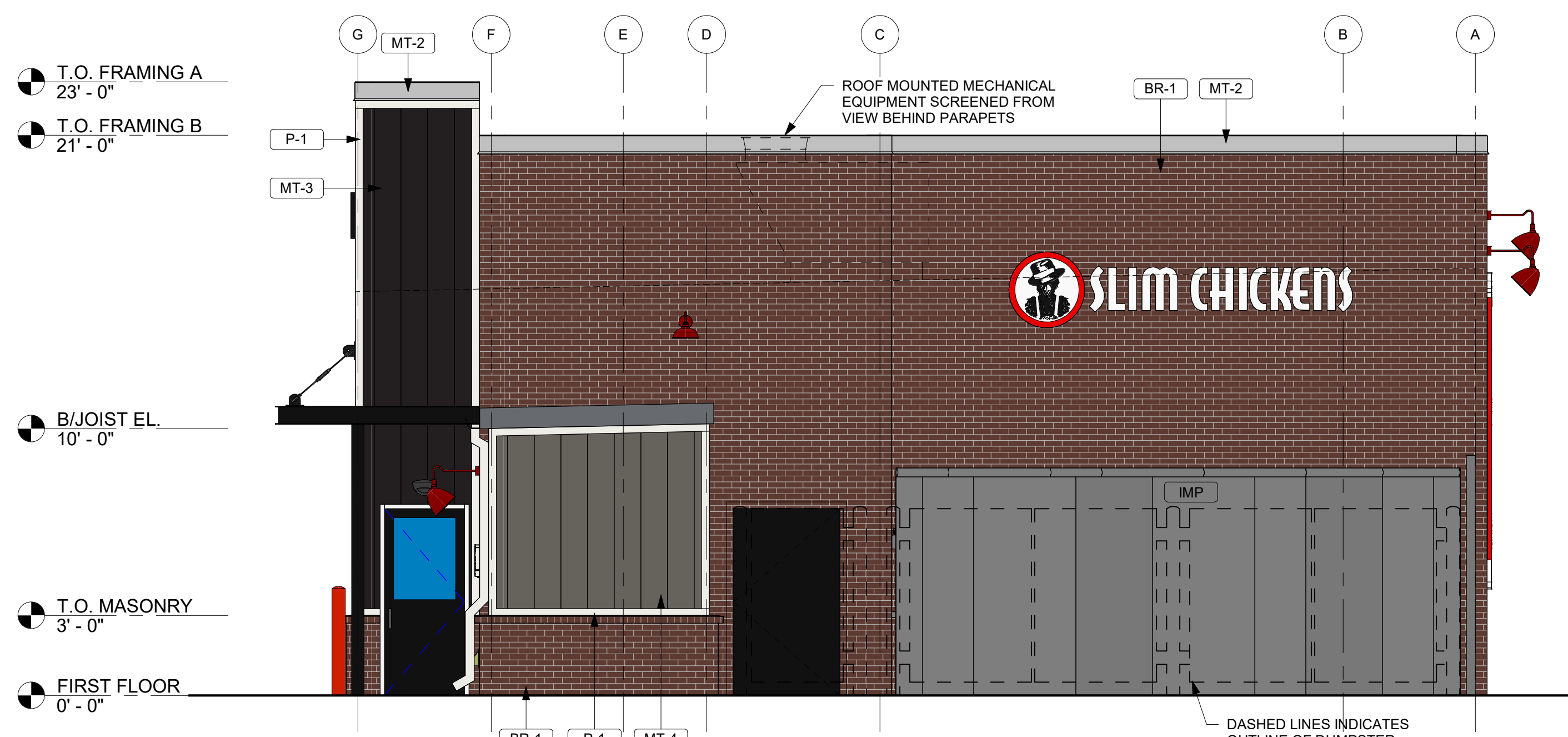
NOT FOR CONSTRUCTION

EXTERIOR MATERIAL KEY

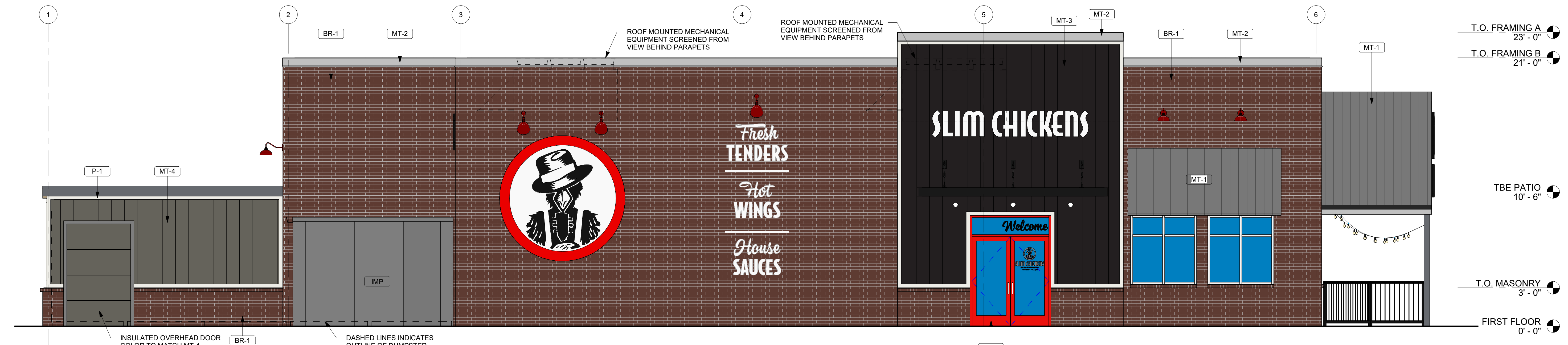
IMP	INSULATED METAL PANEL BY MFR
PRE	PRE-FINISHED ALUMINUM STOREFRONT SHERWIN WILLIAMS 866R308 SW PRIMER: BASE TINT 50% PRO-CRYL UNIVERSAL PRIMER / OFF-WHITE
CD-1	COMPOSITE DECKING BOARDS LOCAL SUPPLIER REGIONAL SELECTION
BR-1	BRICK ACME BRICK (OR APPROVED EQUAL) REGIONAL SELECTION
GLASS-2	GLASS - CLEAR SEE GLAZING SPEC
P-1	FIBER CEMENT BOARD SHERWIN WILLIAMS SW7005 - PURE WHITE - SEMI GLOSS SW PRIMER - QUICK DRY STAIN-BLOCKING PRIMER
MT-1	METAL ROOFING METAL SALES MANUFACTURING CORP. CLEAR
MT-2	PRE-FINISHED METAL COPING FIRESTONE UNA-CLAD / CLEAR ANODIZED KYNAR 500 FINISH
MT-3	STANDING SEAM METAL PANEL METAL SALES MANUFACTURING CORP. PRE-FINISHED MATTE BLACK VERTICAL STANDING SEAM
MT-4	STANDING SEAM METAL PANEL METAL SALES MANUFACTURING CORP. PRE-FINISHED CHARCOAL GRAY VERTICAL STANDING SEAM
P-2	PAINT SHERWIN WILLIAMS IRON MOUNTAIN - CUSTOM FORMULA FINISH NOTE 2 / SATIN



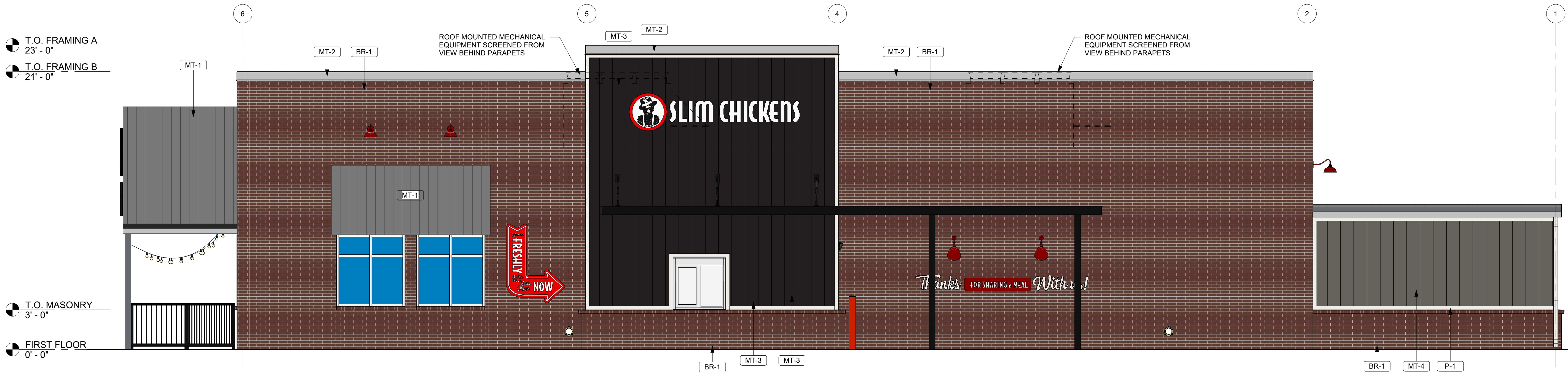
WEST ELEVATION
 1/4" = 1'-0"



EAST ELEVATION
 1/4" = 1'-0"



NORTH ELEVATION
 1/4" = 1'-0"



SOUTH ELEVATION
 1/4" = 1'-0"

GENERAL NOTES

1. ALL SIGNAGE SHOWN IS TO BE REVIEWED AND APPROVED WITH A SEPARATE SIGNAGE PERMIT PER AHJ.
2. BUILDING SIGNAGE IS SUBJECT TO AHJ TO DETERMINE FINAL SIZES. SIZES SHOWN ARE STANDARD AND CAN BE CHANGED AS NEEDED. DESIGN FOR MAXIMUM ALLOWABLE SIGNAGE AREA. IF AHJ DOES NOT ALLOW ALL SIGNAGE, PRIORITY SHOULD BE PLACED ON INTERNALLY LIT SIGNAGE AND THEN BUILDING GRAPHICS AS ALLOWED.

MATERIAL CALCULATIONS

WEST ELEVATION		
503 SF	BRICK - PRIMARY	(56%)
63 SF	STANDING SEAM METAL PANEL	(7%)
136 SF	STOREFRONT/GLAZING - PRIMARY	(15%)
130 SF	COMPOSITE DECKING BOARDS	(14%)
15 SF	FIBER CEMENT BOARD TRIM	(2%)
55 SF	PRE-FINISHED METAL COPING, FASCIA, ETC.	(6%)
0 SF	STANDING SEAM METAL AWNINGS/ROOF	(0%)
902 SF TOTAL		= (100%)
EAST ELEVATION		
496 SF	BRICK - PRIMARY	(55%)
114 SF	STANDING SEAM METAL PANEL	(13%)
21 SF	STOREFRONT/GLAZING - PRIMARY	(2%)
21 SF	FIBER CEMENT BOARD TRIM	(2%)
42 SF	PRE-FINISHED METAL COPING, FASCIA, ETC.	(5%)
28 SF	HOLLOW METAL DOOR	(3%)
180 SF	INSULATED METAL PANEL	(20%)
902 SF TOTAL		= (100%)
NORTH ELEVATION		
1,139 SF	BRICK - PRIMARY	(56%)
372 SF	STANDING SEAM METAL PANEL	(16%)
111 SF	STOREFRONT/GLAZING - PRIMARY	(6%)
107 SF	INSULATED METAL PANEL	(5%)
36 SF	FIBER CEMENT BOARD TRIM	(2%)
80 SF	PRE-FINISHED METAL COPING, FASCIA, ETC.	(4%)
139 SF	STANDING SEAM METAL AWNINGS/ROOF	(7%)
45 SF	OVERHEAD INSULATED DOOR	(2%)
2,029 SF TOTAL		= (100%)
SOUTH ELEVATION		
1,257 SF	BRICK - PRIMARY	(62%)
447 SF	STANDING SEAM METAL PANEL	(22%)
72 SF	STOREFRONT/GLAZING - PRIMARY	(3%)
36 SF	FIBER CEMENT BOARD TRIM	(2%)
79 SF	PRE-FINISHED METAL COPING, FASCIA, ETC.	(4%)
139 SF	STANDING SEAM METAL AWNINGS/ROOF	(7%)
2,032 SF TOTAL		= (100%)
OVERALL BUILDING CALCULATIONS		
3,395 SF	BRICK	(59%)
998 SF	STANDING SEAM METAL PANEL	(16%)
340 SF	STOREFRONT/GLAZING	(6%)
110 SF	FIBER CEMENT BOARD TRIM	(2%)
256 SF	PRE-FINISHED METAL COPING, FASCIA, ETC.	(4%)
278 SF	STANDING SEAM METAL AWNINGS/ROOF	(5%)
45 SF	OVERHEAD INSULATED DOOR	(+1%)
287 SF	INSULATED METAL PANEL	(5%)
130 SF	COMPOSITE DECKING BOARDS	(2%)
28 SF	HOLLOW METAL DOOR	(+1%)
5,865 SF TOTAL		= (100%)