

PROJECT INFORMATION

PROPOSED QUICK SERVE RESTAURANT FOR:
HAWAIIAN BROS - STR: ###
1005 SE ALICE'S RD • WAUKEE, IA 50263

PROFESSIONAL SEAL

PRELIMINARY DATES
MAR. 1, 2024
MAR. 27, 2024

NOT FOR CONSTRUCTION

JOB NUMBER
230265600

SHEET NUMBER
X2.0

EXTERIOR MATERIAL KEY

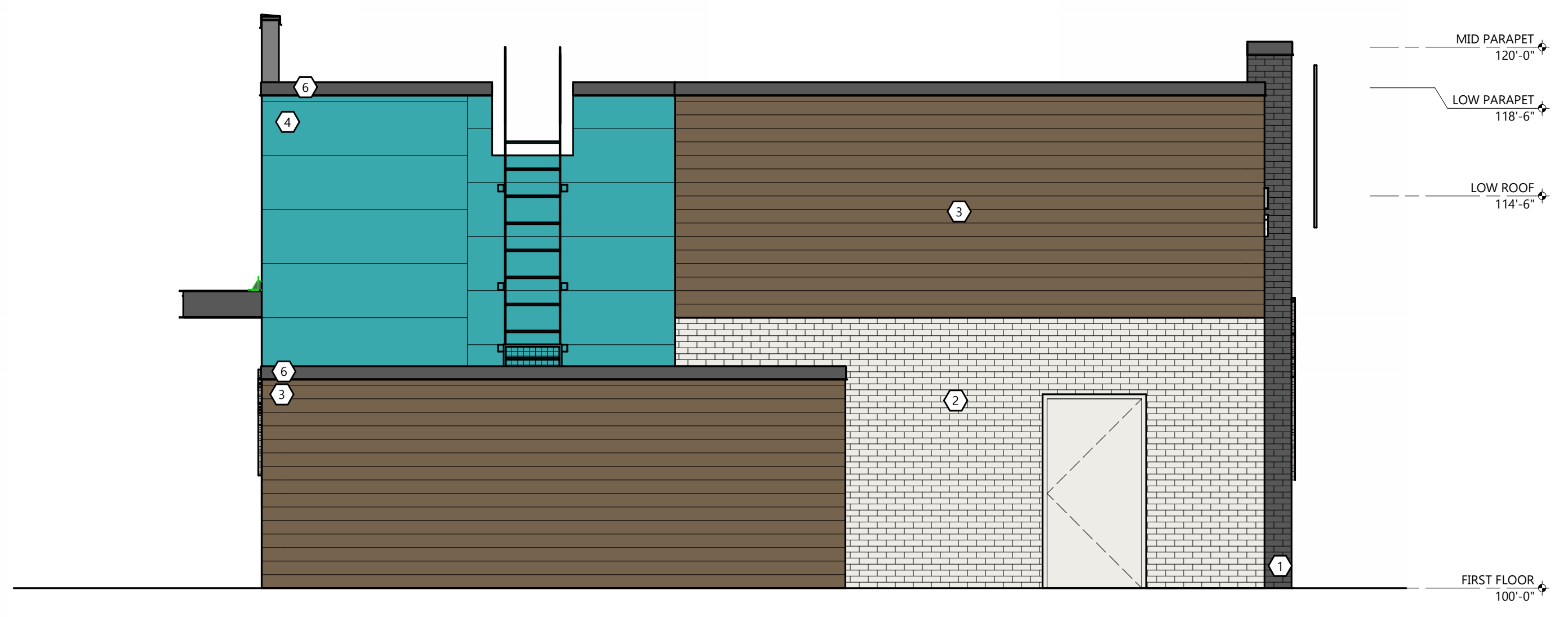
1	THIN BRICK MFR. GLEN-GERY STYLE: EXTRUDED TEXTURE: SMOOTH COLOR: ROMERO (GROUT COLOR: G-501)
2	THIN BRICK MFR. GLEN-GERY STYLE: EXTRUDED TEXTURE: SMOOTH COLOR: ASPEN WHITE (GROUT COLOR: G-501)
3	WOOD LOOK ALUMINUM SIDING & SOFFIT (LONGBOARD) PRODUCT: LONGBOARD 4" V-GROOVE SIDING PANEL MATERIAL: HEAVY GAUGE ALUMINUM COLOR: DARK NATIONAL WALNUT
4	EFS MFR. STOCAS TEXTURE: SANDBLAST (SEE DETAIL ON SHEET FOR REVEALS) COLOR: PAINTED SW6767 AQUARIUM
5	VINYL SCREEN PATTERN: WAVE GRAPHIC FRAME AND SIGNAGE PROVIDED BY SIGNAGE VENDOR COLOR: WHITE/GRAY
6	METAL STRUCTURE COLOR: PAINTED SW6764 PEPPERCORN
7	METAL COPING MATERIAL: PAC CLAD 24 GAUGE STEEL COLOR: CHARCOAL

GENERAL NOTES

1. ALL SIGNAGE SHOWN IS TO BE REVIEWED AND APPROVED WITH A SEPARATE SIGNAGE PERMIT PER AHI.

MATERIAL CALCULATIONS

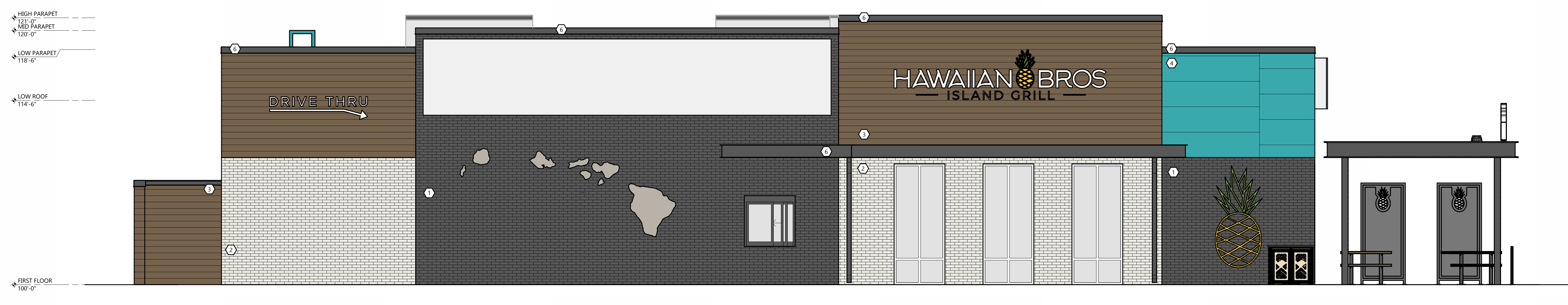
WEST ELEVATION SE ALICE'S RD		
199 SF	THIN BRICK VENEER (GRAY)	(27%)
41 SF	THIN BRICK VENEER (WHITE)	(6%)
102 SF	LONGBOARD	(14%)
199 SF	EFS	(27%)
176 SF	STOREFRONT/GLAZING	(24%)
19 SF	PRE-FINISHED METAL COPING, ETC.	(3%)
736 SF TOTAL		= (100%)
EAST ELEVATION		
20 SF	THIN BRICK VENEER (GRAY)	(2%)
139 SF	THIN BRICK VENEER (WHITE)	(20%)
28 SF	HOLLOW METAL DOOR	(4%)
345 SF	LONGBOARD	(49%)
146 SF	EFS	(21%)
29 SF	PRE-FINISHED METAL COPING, ETC.	(4%)
707 SF TOTAL		= (100%)
SOUTH ELEVATION		
437 SF	THIN BRICK VENEER (GRAY)	(25%)
195 SF	THIN BRICK VENEER (WHITE)	(11%)
381 SF	LONGBOARD	(22%)
538 SF	EFS	(30%)
149 SF	STOREFRONT/GLAZING	(9%)
50 SF	PRE-FINISHED METAL COPING, ETC.	(3%)
1,750 SF TOTAL		= (100%)
NORTH ELEVATION		
761 SF	THIN BRICK VENEER (GRAY)	(43%)
293 SF	THIN BRICK VENEER (WHITE)	(16%)
452 SF	LONGBOARD	(25%)
99 SF	EFS	(6%)
130 SF	STOREFRONT/GLAZING	(7%)
45 SF	PRE-FINISHED METAL COPING, ETC.	(3%)
1,780 SF TOTAL		= (100%)
TOTAL BUILDING		
1,417 SF	THIN BRICK VENEER (GRAY)	(29%)
668 SF	THIN BRICK VENEER (WHITE)	(13%)
1,280 SF	LONGBOARD	(26%)
982 SF	EFS	(20%)
455 SF	STOREFRONT/GLAZING	(9%)
143 SF	PRE-FINISHED METAL COPING, ETC.	(3%)
28 SF	HOLLOW METAL DOOR	(> 1%)
4,973 SF TOTAL		= (100%)



EAST ELEVATION
SCALE: 1/4" = 1'-0"



WEST ELEVATION
SE ALICE'S RD
SCALE: 1/4" = 1'-0"



NORTH ELEVATION
SCALE: 1/4" = 1'-0"



SOUTH ELEVATION
SCALE: 1/4" = 1'-0"

© 2024 EXCEL ENGINEERING, INC. ALL RIGHTS RESERVED. 3/27/2024 4:54:44 PM