

KETTLESTONE CENTRAL TOWNHOMES PLAT 1

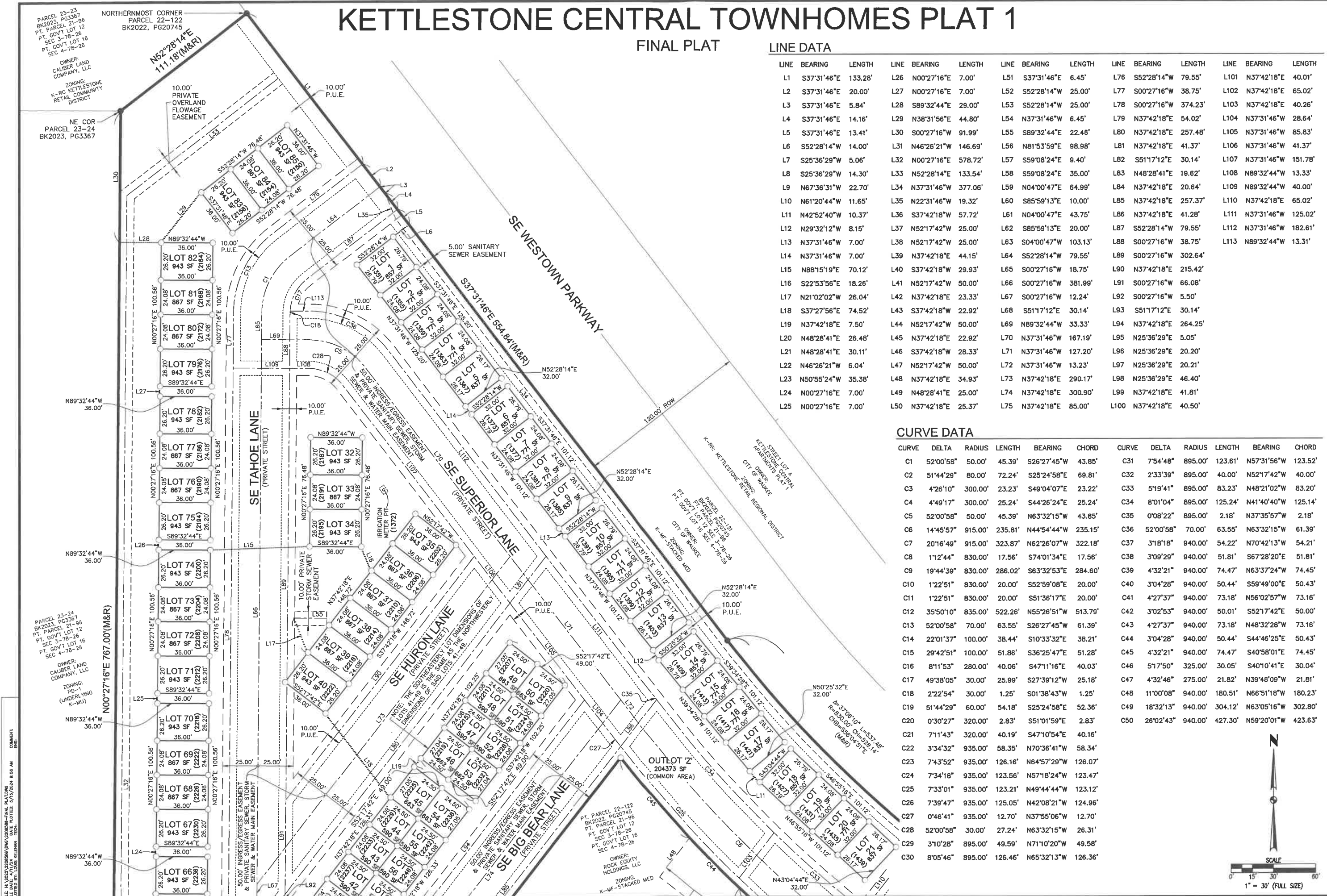
FINAL PLAT

LINE DATA

LINE	BEARING	LENGTH	LINE	BEARING	LENGTH	LINE	BEARING	LENGTH	LINE	BEARING	LENGTH	LINE	BEARING	LENGTH
L1	S37°31'46"E	133.28'	L26	N00°27'16"E	7.00'	L51	S37°31'46"E	6.45'	L76	S52°28'14"W	79.55'	L101	N37°42'18"E	40.01'
L2	S37°31'46"E	20.00'	L27	N00°27'16"E	7.00'	L52	S52°28'14"W	25.00'	L77	S00°27'16"W	38.75'	L102	N37°42'18"E	65.02'
L3	S37°31'46"E	5.84'	L28	S89°32'44"E	29.00'	L53	S52°28'14"W	25.00'	L78	S00°27'16"W	374.23'	L103	N37°42'18"E	40.26'
L4	S37°31'46"E	14.16'	L29	N38°31'56"E	44.80'	L54	N37°31'46"W	6.45'	L79	N37°42'18"E	54.02'	L104	N37°31'46"W	28.64'
L5	S37°31'46"E	13.41'	L30	S00°27'16"W	91.99'	L55	S89°32'44"E	22.46'	L80	N37°42'18"E	257.48'	L105	N37°31'46"W	85.83'
L6	S52°28'14"W	14.00'	L31	N46°26'21"W	146.69'	L56	N81°53'59"E	98.98'	L81	N37°42'18"E	41.37'	L106	N37°31'46"W	41.37'
L7	S25°36'29"W	5.06'	L32	N00°27'16"E	578.72'	L57	S59°08'24"E	9.40'	L82	S51°17'12"E	30.14'	L107	N37°31'46"W	151.78'
L8	S25°36'29"W	14.30'	L33	N52°28'14"E	133.54'	L58	S59°08'24"E	35.00'	L83	N48°28'41"E	19.62'	L108	N89°32'44"W	13.33'
L9	N67°36'31"W	22.70'	L34	N37°31'46"W	377.06'	L59	N04°00'47"E	64.99'	L84	N37°42'18"E	20.64'	L109	N89°32'44"W	40.00'
L10	N61°20'44"W	11.65'	L35	N22°31'46"W	19.32'	L60	S85°59'13"E	10.00'	L85	N37°42'18"E	257.37'	L110	N37°42'18"E	65.02'
L11	N42°52'40"W	10.37'	L36	S37°42'18"W	57.72'	L61	N04°00'47"E	43.75'	L86	N37°42'18"E	41.28'	L111	N37°31'46"W	125.02'
L12	N29°32'12"W	8.15'	L37	N52°17'42"W	25.00'	L62	S85°59'13"E	20.00'	L87	S52°28'14"W	79.55'	L112	N37°31'46"W	182.61'
L13	N37°31'46"W	7.00'	L38	N52°17'42"W	25.00'	L63	S04°00'47"W	103.13'	L88	S00°27'16"W	38.75'	L113	N89°32'44"W	13.31'
L14	N37°31'46"W	7.00'	L39	N37°42'18"E	44.15'	L64	S52°28'14"W	79.55'	L89	S00°27'16"W	302.64'			
L15	N88°15'19"E	70.12'	L40	S37°42'18"W	29.93'	L65	S00°27'16"W	18.75'	L90	N37°42'18"E	215.42'			
L16	S22°53'56"E	18.26'	L41	N52°17'42"W	50.00'	L66	S00°27'16"W	381.99'	L91	S00°27'16"W	66.08'			
L17	N21°02'02"W	26.04'	L42	N37°42'18"E	23.33'	L67	S00°27'16"W	12.24'	L92	S00°27'16"W	5.50'			
L18	S37°27'56"E	74.52'	L43	S37°42'18"W	22.92'	L68	S51°17'12"E	30.14'	L93	S51°17'12"E	30.14'			
L19	N37°42'18"E	7.50'	L44	N52°17'42"W	50.00'	L69	N89°32'44"W	33.33'	L94	N37°42'18"E	264.25'			
L20	N48°28'41"E	26.48'	L45	N37°42'18"E	22.92'	L70	N37°31'46"W	167.19'	L95	N25°36'29"E	5.05'			
L21	N48°28'41"E	30.11'	L46	S37°42'18"W	28.33'	L71	N37°31'46"W	127.20'	L96	N25°36'29"E	20.20'			
L22	N46°26'21"W	6.04'	L47	N52°17'42"W	50.00'	L72	N37°31'46"W	13.23'	L97	N25°36'29"E	20.21'			
L23	N50°55'24"W	35.38'	L48	N37°42'18"E	34.93'	L73	N37°42'18"E	290.17'	L98	N25°36'29"E	46.40'			
L24	N00°27'16"E	7.00'	L49	N48°28'41"E	25.00'	L74	N37°42'18"E	300.90'	L99	N37°42'18"E	41.81'			
L25	N00°27'16"E	7.00'	L50	N37°42'18"E	25.37'	L75	N37°42'18"E	85.00'	L100	N37°42'18"E	40.50'			

CURVE DATA

CURVE	DELTA	RADIUS	LENGTH	BEARING	CHORD	CURVE	DELTA	RADIUS	LENGTH	BEARING	CHORD
C1	52°00'58"	50.00'	45.39'	S26°27'45"W	43.85'	C31	7°54'48"	895.00'	123.61'	N57°31'56"W	123.52'
C2	51°44'29"	80.00'	72.24'	S25°24'58"E	69.81'	C32	2°33'39"	895.00'	40.00'	N52°17'42"W	40.00'
C3	4°26'10"	300.00'	23.23'	S49°04'07"E	23.22'	C33	5°19'41"	895.00'	83.23'	N48°21'02"W	83.20'
C4	4°49'17"	300.00'	25.24'	S44°26'24"E	25.24'	C34	8°01'04"	895.00'	125.24'	N41°40'40"W	125.14'
C5	52°00'58"	50.00'	45.39'	N63°32'15"W	43.85'	C35	0°08'22"	895.00'	2.18'	N37°35'57"W	2.18'
C6	14°45'57"	915.00'	235.81'	N44°54'44"W	235.15'	C36	52°00'58"	70.00'	63.55'	N63°32'15"W	61.39'
C7	20°16'49"	915.00'	323.87'	N62°26'07"W	322.18'	C37	3°18'18"	940.00'	54.22'	N70°42'13"W	54.21'
C8	11°24'44"	830.00'	17.56'	S74°01'34"E	17.56'	C38	3°09'29"	940.00'	51.81'	S67°28'20"E	51.81'
C9	19°44'39"	830.00'	286.02'	S63°32'53"E	284.60'	C39	4°32'21"	940.00'	74.47'	N63°37'24"W	74.45'
C10	1°22'51"	830.00'	20.00'	S52°59'08"E	20.00'	C40	3°04'28"	940.00'	50.44'	S59°49'00"E	50.43'
C11	1°22'51"	830.00'	20.00'	S51°36'17"E	20.00'	C41	4°27'37"	940.00'	73.18'	N56°02'57"W	73.16'
C12	35°50'10"	835.00'	522.26'	N55°26'51"W	513.79'	C42	3°02'53"	940.00'	50.01'	S52°17'42"E	50.00'
C13	52°00'58"	70.00'	63.55'	S26°27'45"W	61.39'	C43	4°27'37"	940.00'	73.18'	N48°32'28"W	73.16'
C14	22°01'37"	100.00'	38.44'	S10°33'32"E	38.21'	C44	3°04'28"	940.00'	50.44'	S44°46'25"E	50.43'
C15	29°42'51"	100.00'	51.86'	S36°25'47"E	51.28'	C45	4°32'21"	940.00'	74.47'	S40°58'01"E	74.45'
C16	8°11'53"	280.00'	40.06'	S47°11'16"E	40.03'	C46	5°17'50"	325.00'	30.05'	S40°10'41"E	30.04'
C17	49°38'05"	30.00'	25.99'	S27°39'12"W	25.18'	C47	4°32'46"	275.00'	21.82'	N39°48'09"W	21.81'
C18	2°22'54"	30.00'	1.25'	S01°38'43"W	1.25'	C48	11°00'08"	940.00'	180.51'	N68°51'18"W	180.23'
C19	51°44'29"	60.00'	54.18'	S25°24'58"E	52.36'	C49	18°32'13"	940.00'	304.12'	N63°05'16"W	302.80'
C20	0°30'27"	320.00'	2.83'	S51°01'59"E	2.83'	C50	26°02'43"	940.00'	427.30'	N59°20'01"W	423.63'
C21	7°11'43"	320.00'	40.19'	S47°10'54"E	40.16'						
C22	3°34'32"	935.00'	58.35'	N70°36'41"W	58.34'						
C23	7°43'52"	935.00'	126.16'	N64°57'29"W	126.07'						
C24	7°34'18"	935.00'	123.56'	N57°18'24"W	123.47'						
C25	7°33'01"	935.00'	123.21'	N49°44'44"W	123.12'						
C26	7°39'47"	935.00'	125.05'	N42°08'21"W	124.96'						
C27	0°46'41"	935.00'	12.70'	N37°55'06"W	12.70'						
C28	52°00'58"	30.00'	27.24'	N63°32'15"W	26.31'						
C29	3°10'28"	895.00'	49.59'	N71°10'20"W	49.58'						
C30	8°05'46"	895.00'	126.46'	N65°32'13"W	126.36'						



DATE
05/15/24
04/02/24
03/19/24
02/29/24

REVISIONS
SIGNED SUBMITTAL
THIRD SUBMITTAL
SECOND SUBMITTAL
FIRST SUBMITTAL

4121 NW URBANDALE DRIVE
URBANDALE, IA 50322
PHONE: (515) 369-4400

TECH: REVIEW:
ENGINEER:

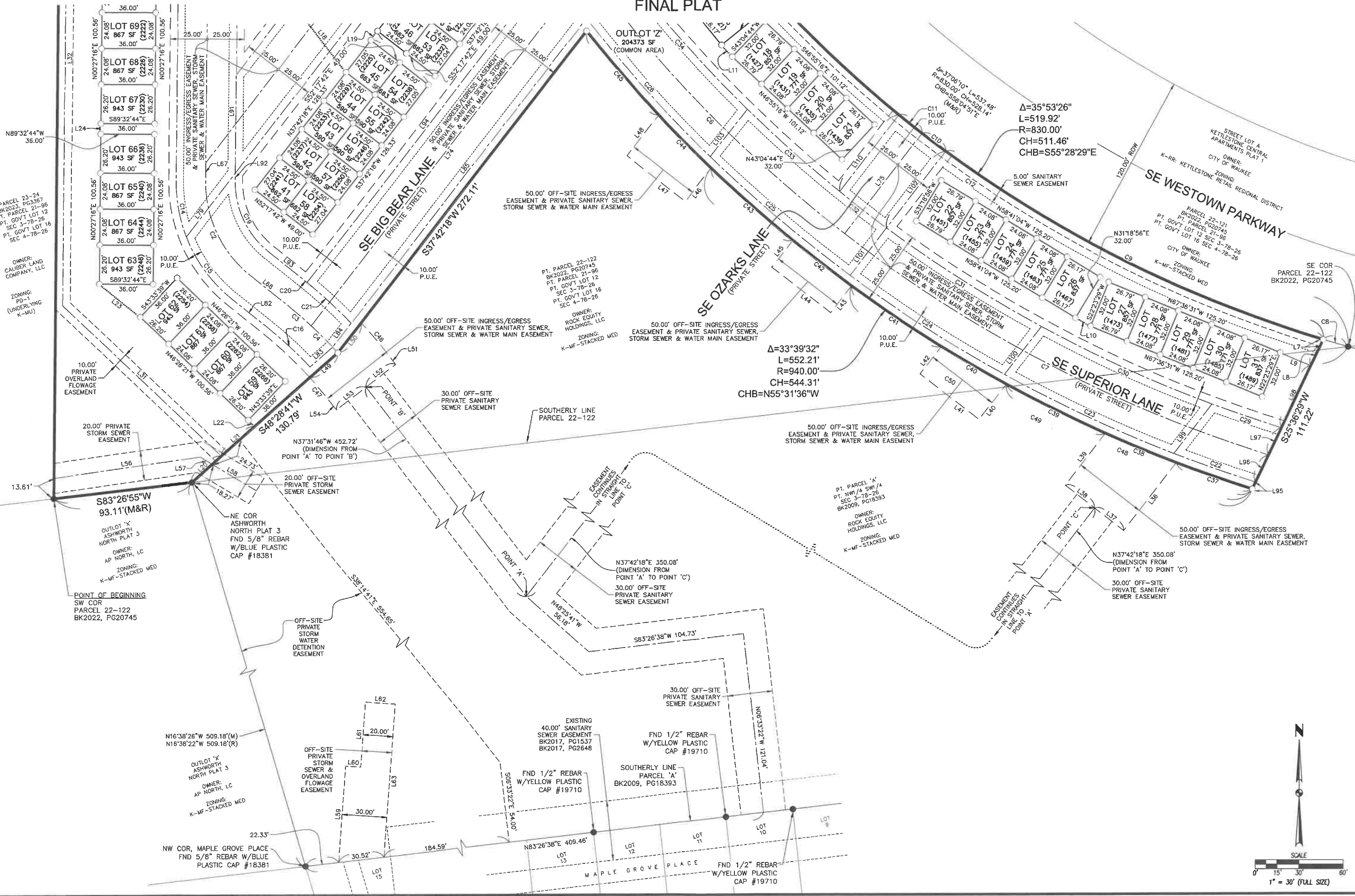
CIVIL DESIGN ADVANTAGE
WAUKEE, IOWA

KETTLESTONE CENTRAL TOWNHOMES PLAT 1
FINAL PLAT

2
3
2208.586

KETTLESTONE CENTRAL TOWNHOMES PLAT 1

FINAL PLAT



DATE	REVISIONS
05/15/24	SIGNED SUBMITTAL
04/02/24	THIRD SUBMITTAL
03/19/24	SECOND SUBMITTAL
02/20/24	FIRST SUBMITTAL

4121 NW URBANDALE DRIVE
 URBANDALE, IA 50322
 PHONE: (515) 369-4400

TECH: [Blank]
 ENGINEER: [Blank]
 REVIEW: [Blank]



CIVIL DESIGN ADVANTAGE
 WAUKEE, IOWA

KETTLESTONE CENTRAL TOWNHOMES PLAT 1
 FINAL PLAT

3/3

2208.586

FILE: N:\2024\2208586\DWG\2208586-FINAL PLATING.dwg
 PLOTTED BY: LOUIS KLEBAN
 DATE: 5/15/2024 9:08 AM