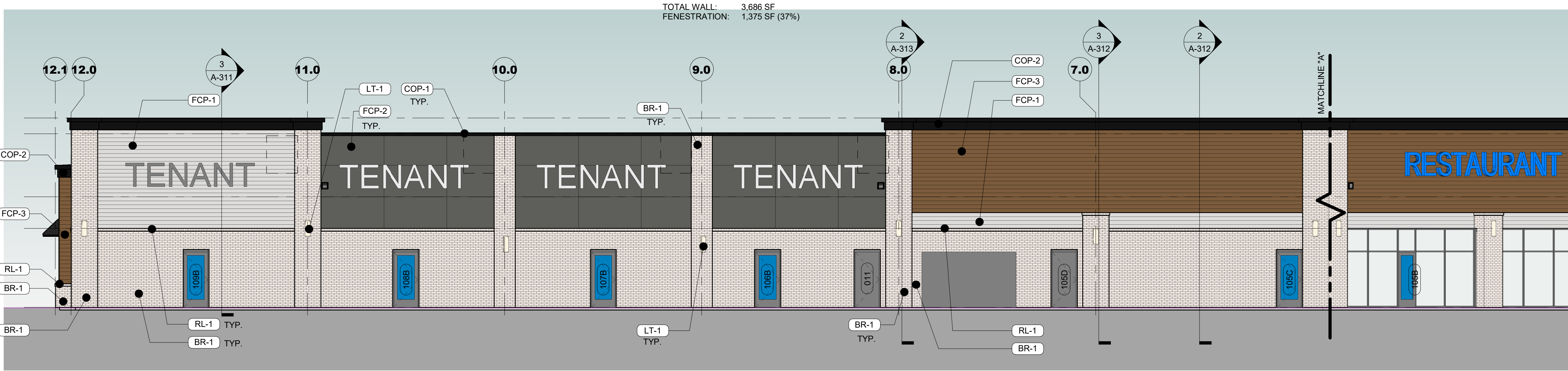
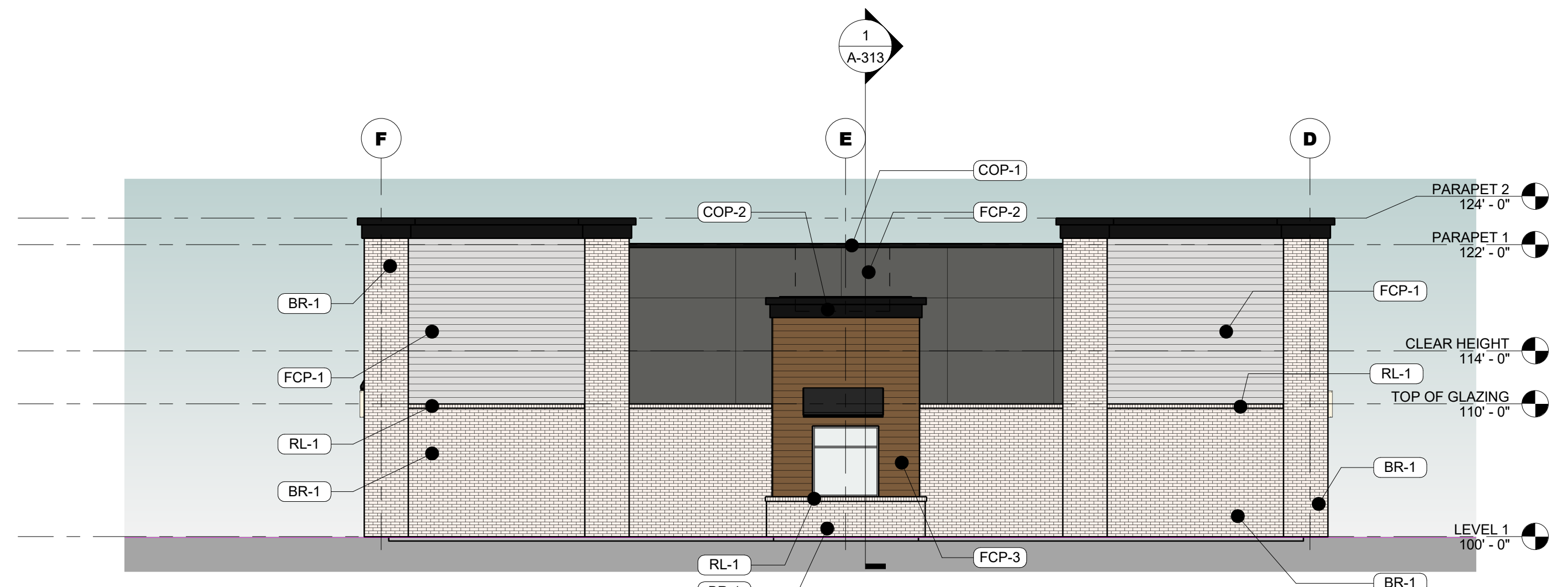


1 WEST ELEVATION
SCALE: 1/8" = 1'-0"



2 NORTHWEST ELEVATION
SCALE: 1/8" = 1'-0"



3 NORTHEAST ELEVATION
SCALE: 1/8" = 1'-0"

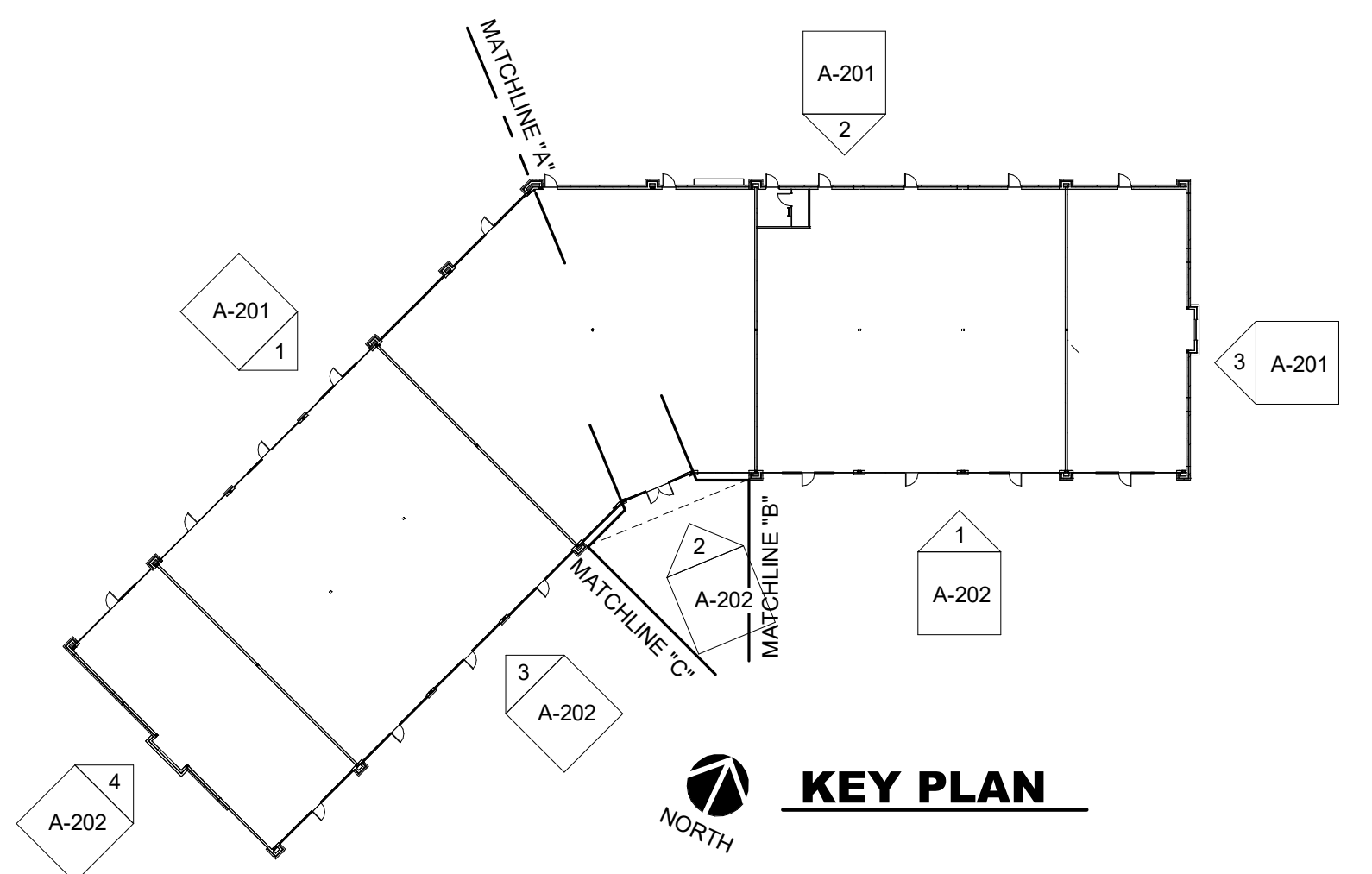
GENERAL EXTERIOR ELEVATION NOTES

- REFER TO ADDITIONAL NOTES AND REQUIREMENTS ON ALL OTHER DOCUMENTS AND OTHER DISCIPLINES DOCUMENTS.
- ALL CONDUIT RUNS & SERVICE LINES SHALL BE GROUPED TOGETHER IN A NEAT & ORDERLY MANNER AND SHOULD PENETRATE THE WALL AT THE LOWEST POINT AND ARE NOT TO RUN OVER THE TOP OF PARAPET. ALL OTHER CONDUITS & JUNCTION BOXES FOR EXTERIOR FIXTURES & EQUIPMENT SHALL BE FULLY CONCEALED WITHIN THE BUILDING CONSTRUCTION.
- ALL HORIZONTAL TRANSITIONS BETWEEN DIFFERENT MATERIALS SHALL BE FLASHED CONTINUOUS FROM UP BEHIND UPPER MATERIAL AND EXTEND OVER TO EXTERIOR FACE OF LOWER MATERIAL WITH DRIP EDGE.
- ANY RETURNS OR BLIND ELEVATIONS NOT SHOWN SHALL BE SIMILAR IN MATERIAL AND MAKEUP TO ADJACENT CONDITIONS OR OTHER SIMILAR CONDITIONS.
- NO EXPOSED MASONRY/MATERIAL CORES. MASONRY RETURNS AT WINDOWS/OPENINGS ARE REQUIRED IF FRAMING IS NOT DEEP ENOUGH TO PROVIDE CLOSURE AT THE BACKSIDE OF MASONRY FOR AN EFFECTIVELY SEALED JOINT.
- MATERIALS ABOVE CANOPIES & AWNINGS TO BE CONTINUED DOWN BEHIND THEM U.O.N., TYP.
- ANY EXPOSED ROOFING MEMBRANE VISIBLE FROM A PUBLIC RIGHT AWAY MUST MATCH THE PRIMARY WALL MATERIAL COLOR.
- INSTALL VERTICAL EXPANSION JOINTS PER STRUCTURAL OR MINIMAL AT COLUMN/GRID LINES AND AT THE HEAD OF DOOR JAMB/OPENINGS OR AS OTHERWISE NOTED OR WHERE REQUIRED PER STANDARD MATERIAL PRACTICE TO REDUCE STRESS CRACKING. NO CONTROL JOINT/EXPANSION JOINT AT MAIN STRUCTURAL BEARING LOCATIONS. VERIFY JOINTS WITH ARCHITECT.
- CAULK & SEAL ALL TRANSITION-CONTROL-EXPANSION AT ALL EXTERIOR MATERIALS.
- INSULATE AND SEAL TO ENSURE ADEQUATE AIR INFILTRATION BARRIER AROUND ALL EXTERIOR PENETRATIONS TO PREVENT WATER AND SPRINKLER PIPE FREEZING.
- WHERE EXTERIOR PAVING ADJACENT TO BUILDING, TOP OF PAVING TO BE 1/4" LOWER THAN INTERIOR FINISH FLOOR, SLOPING CONTINUOUSLY AWAY FROM BUILDING A MINIMUM OF 5'. WHERE DOOR STOOP, 48" OUT FROM DOOR 1:48(2%) MAX. SLOPE, AFTER 48" AWAY FROM DOOR 1:20(5%) MAXIMUM SLOPE TO PUBLIC WAY. (REFER TO CIVIL)
- WHERE NO EXTERIOR PAVING ADJACENT TO BUILDING, TOP OF FINISHED LANDSCAPE A MINIMUM OF 4" BELOW INTERIOR FINISH FLOOR AND 4" BELOW EXTERIOR WALL FLASHING/WEEPS, SLOPING CONTINUOUSLY AWAY FROM BUILDING A MINIMUM OF 5'. (REFER TO CIVIL)
- ADDRESS SHALL BE PROVIDED ON STREET SIDE OF BUILDING AND ON MONUMENT SIGN. NUMBERS A MINIMUM 5 INCH CONTRASTING COLOR NUMBERS WITH MINIMUM 1/2" STROKE.
- IF ANY SIGNAGE OR SIGN BASE IS SHOWN IT IS FOR REFERENCE ONLY. FINAL DESIGNS AND/OR ALLOWANCES SHALL BE DETERMINED WITH APPROVED SIGNAGE PERMITTING/APPROVAL OF ALL SIGNAGE PER CURRENT CITY ORDINANCE BY OTHERS.

EXTERIOR MATERIAL LEGEND	
MAT. LABEL	MATERIAL DESCRIPTION
AWN-1	AWNING, PRE-ENGINEERED, FABRIC AWNING ON ALUMINUM FRAME; COLOR: BLACK
BR-1	FULL BED, MODULAR SIZE BRICK; FINISH: WHITE W/ NATURAL MORTAR; GLEN GERY ASPEN WHITE WIRECUT OR EQUAL.
COP-1	METAL COPING SYSTEM; PRE-FINISHED BREAK METAL; COLOR: FIRESTONE MATTE BLACK OR SIM.
COP-2	FIBER-CEMENT PANEL CORNICE; COLOR: BLACK
FCP-1	FIBER-CEMENT SMOOTH LAP SIDING, NOMINAL 6" EXPOSURE. PAINTED: OFF-WHITE. ALTERNATIVE: STEEL SIDING, INSTALLED HORIZONTALLY. QUALITY EDGE VESTA SIDING, #280 WHITE.
FCP-2	FIBER-CEMENT SMOOTH PANEL SIDING, 4X8" W/ ALUMINUM FLASHING. PAINTED: DARK GRAY.
FCP-3	NICHIHA VINTAGE WOOD; CEDAR; ALTERNATE: QUALITY EDGE VESTA SIDING #482 GILDED GRAIN.
LT-1	EXTERIOR WALL SCONCE LIGHT FIXTURE. FINISH: MATTE BLACK.
RL-1	BRICK ROWLOCK. MATCH BR-1.
SF-1	T.B. ALUMINUM STOREFRONT FRAMING; CLEAR ANODIZED FINISH
TR-1	ACCENT TRIM. FINISH: BLACK.
VIS	1" INSULATED VISION GLASS; CLEAR W/ LOW E COATING

MISC EXTERIOR MATERIAL FINISHES

- TYPICAL U.O.N.
- EXPOSED CONCRETE: GRIND SMOOTH & RUB/COAT WITH CEMENT SLURRY.
 - EXPOSED LINTELS: GALVANIZED & PAINTED TO MATCH ADJACENT MATERIAL ABOVE.
 - FASCIA & SOFFIT: METAL PRE-FINISHED TO MATCH ADJACENT ROOF COLOR.
 - SCUPPERS, GUTTERS & DOWNSPOUTS: METAL PRE-FINISHED TO MATCH ADJ. MATERIAL.
 - CAULKS & SEALANTS: COLOR MATCHED TO ADJACENT MATERIAL.
 - HOLLOW METAL MAN DOORS & FRAMES: PAINTED TO MATCH ADJACENT MATERIAL.
 - LOUVERS: METAL PRE-FINISHED TO MATCH ADJACENT MATERIAL COLOR.



KEY PLAN

This drawing has been prepared by the Architect or under supervision of the Architect direct supervision. This drawing is not to be used for any other project without the written consent of the Architect. Any information contained herein is for informational purposes only. © Copyright 2024 by Simonson + Associates Architects, L.L.C.

LARSON KETTLESTONE RETAIL
SE Pleasant View Dr./Grand Prairie Pkwy
Waukee, IA

NOT FOR CONSTRUCTION

Rev. #	Issue / Revision	Date
1	PRELIMINARY EXT ELEVATIONS	08-29-2024
2	ISSUED FOR BUDGET PRICING	09-10-2024
3	SITE PLAN SUBMITTAL	09-16-2024
4	SITE PLAN SUBMITTAL	10-11-2024

Proj. No. SAA Proj. Mgr.
24068 TKW
Sheet Title
EXTERIOR ELEVATIONS
Sheet No.

A-201

2/20/2024 10:10 AM Larson Kettlestone Retail, Waukee, IACAD, ARCH/24068 Larson Kettlestone.rvt

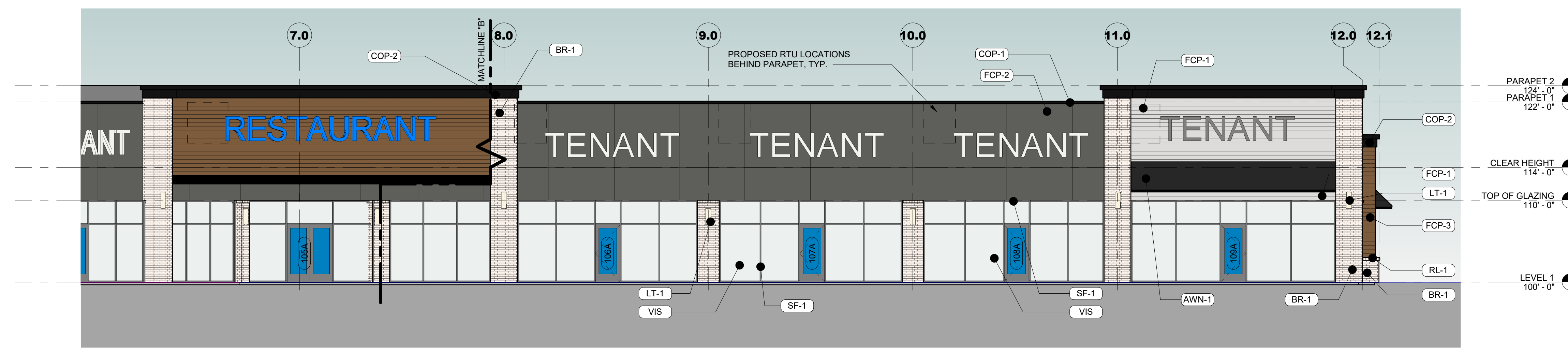
GENERAL EXTERIOR ELEVATION NOTES

- REFER TO ADDITIONAL NOTES AND REQUIREMENTS ON ALL OTHER DOCUMENTS AND OTHER DISCIPLINES DOCUMENTS.
- ALL CONDUIT RUNS & SERVICE LINES SHALL BE GROUPED TOGETHER IN A NEAT & ORDERLY MANNER AND SHOULD PENETRATE THE WALL AT THE LOWEST POINT AND ARE NOT TO RUN OVER THE TOP OF PARAPET. ALL OTHER CONDUITS & JUNCTION BOXES FOR EXTERIOR FIXTURES & EQUIPMENT SHALL BE FULLY CONCEALED WITHIN THE BUILDING CONSTRUCTION.
- ALL HORIZONTAL TRANSITIONS BETWEEN DIFFERENT MATERIALS SHALL BE FLASHED CONTINUOUS FROM UP BEHIND UPPER MATERIAL AND EXTEND OVER TO EXTERIOR FACE OF LOWER MATERIAL WITH DRIP EDGE.
- ANY RETURNS OR BLIND ELEVATIONS NOT SHOWN SHALL BE SIMILAR IN MATERIAL AND MAKEUP TO ADJACENT CONDITIONS OR OTHER SIMILAR CONDITIONS.
- NO EXPOSED MASONRY/MATERIAL CORES. MASONRY RETURNS AT WINDOWS/OPENINGS ARE REQUIRED IF FRAMING IS NOT DEEP ENOUGH TO PROVIDE CLOSURE AT THE BACKSIDE OF MASONRY FOR AN EFFECTIVELY SEALED JOINT.
- MATERIALS ABOVE CANOPIES & AWNINGS TO BE CONTINUED DOWN BEHIND THEM U.O.N., TYP.
- ANY EXPOSED ROOFING MEMBRANE VISIBLE FROM A PUBLIC RIGHT AWAY MUST MATCH THE PRIMARY WALL MATERIAL COLOR.
- INSTALL VERTICAL EXPANSION JOINTS PER STRUCTURAL OR MINIMAL AT COLUMN/GRID LINES AND AT THE HEAD OF DOOR JAMBS/OPENINGS OR AS OTHERWISE NOTED OR WHERE REQUIRED PER STANDARD MATERIAL PRACTICE TO REDUCE STRESS CRACKING. NO CONTROL JOINT/EXPANSION JOINT AT MAIN STRUCTURAL BEARING LOCATIONS. VERIFY JOINTS WITH ARCHITECT.
- CAULK & SEAL ALL TRANSITION-CONTROL-EXPANSION AT ALL EXTERIOR MATERIALS.
- INSULATE AND SEAL TO ENSURE ADEQUATE AIR INFILTRATION BARRIER AROUND ALL EXTERIOR PENETRATIONS TO PREVENT WATER AND SPRINKLER PIPE FREEZING.
- WHERE EXTERIOR PAVING ADJACENT TO BUILDING, TOP OF PAVING TO BE 1/4" LOWER THAN INTERIOR FINISH FLOOR, SLOPING CONTINUOUSLY AWAY FROM BUILDING A MINIMUM OF 5'. WHERE DOOR STOOP, 48" OUT FROM DOOR 1:48(2%) MAX. SLOPE, AFTER 48" AWAY FROM DOOR 1:20(5%) MAXIMUM SLOPE TO PUBLIC WAY. (REFER TO CIVIL)
- WHERE NO EXTERIOR PAVING ADJACENT TO BUILDING, TOP OF FINISHED LANDSCAPE A MINIMUM OF 4" BELOW INTERIOR FINISH FLOOR AND 4" BELOW EXTERIOR WALL FLASHING/WEEPS, SLOPING CONTINUOUSLY AWAY FROM BUILDING A MINIMUM OF 5'. (REFER TO CIVIL)
- ADDRESS SHALL BE PROVIDED ON STREET SIDE OF BUILDING AND ON MONUMENT SIGN. NUMBERS A MINIMUM 5 INCH CONTRASTING COLOR NUMBERS WITH MINIMUM 1/2" STROKE.
- IF ANY SIGNAGE OR SIGN BASE IS SHOWN IT IS FOR REFERENCE ONLY. FINAL DESIGNS AND/OR ALLOWANCES SHALL BE DETERMINED WITH APPROVED SIGNAGE PERMIT(S).

EXTERIOR MATERIAL LEGEND	
MAT. LABEL	MATERIAL DESCRIPTION
AWN-1	AWNING, PRE-ENGINEERED, FABRIC AWNING ON ALUMINUM FRAME; COLOR: BLACK
BR-1	FULL BED, MODULAR SIZE BRICK - FINISH: WHITE W/ NATURAL MORTAR. GLEN GERY ASPEN WHITE WIRECUT OR EQUAL.
COP-1	METAL COPING SYSTEM: PRE-FINISHED BREAK METAL; COLOR: FIRESTONE MATTE BLACK OR SIM.
COP-2	FIBER-CEMENT PANEL CORNICE; COLOR: BLACK
FCP-1	FIBER-CEMENT SMOOTH LAP SIDING, NOMINAL 6" EXPOSURE. PAINTED: OFF-WHITE. ALTERNATIVE: STEEL SIDING, INSTALLED HORIZONTALLY. QUALITY EDGE VESTA SIDING, #280 WHITE.
FCP-2	FIBER-CEMENT SMOOTH PANEL SIDING, 4'x8' W/ ALUMINUM FLASHING. PAINTED: DARK GRAY.
FCP-3	NICHIHA VINTAGE WOOD; CEDAR. ALTERNATE: QUALITY EDGE VESTA SIDING #482 GILDED GRAIN.
LT-1	EXTERIOR WALL SCONCE LIGHT FIXTURE. FINISH: MATTE BLACK.
RL-1	BRICK ROWLOCK. MATCH BR-1.
SF-1	T.B. ALUMINUM STOREFRONT FRAMING: CLEAR ANODIZED FINISH
TR-1	ACCENT TRIM. FINISH: BLACK.
VIS	1" INSULATED VISION GLASS: CLEAR W/ LOW E COATING

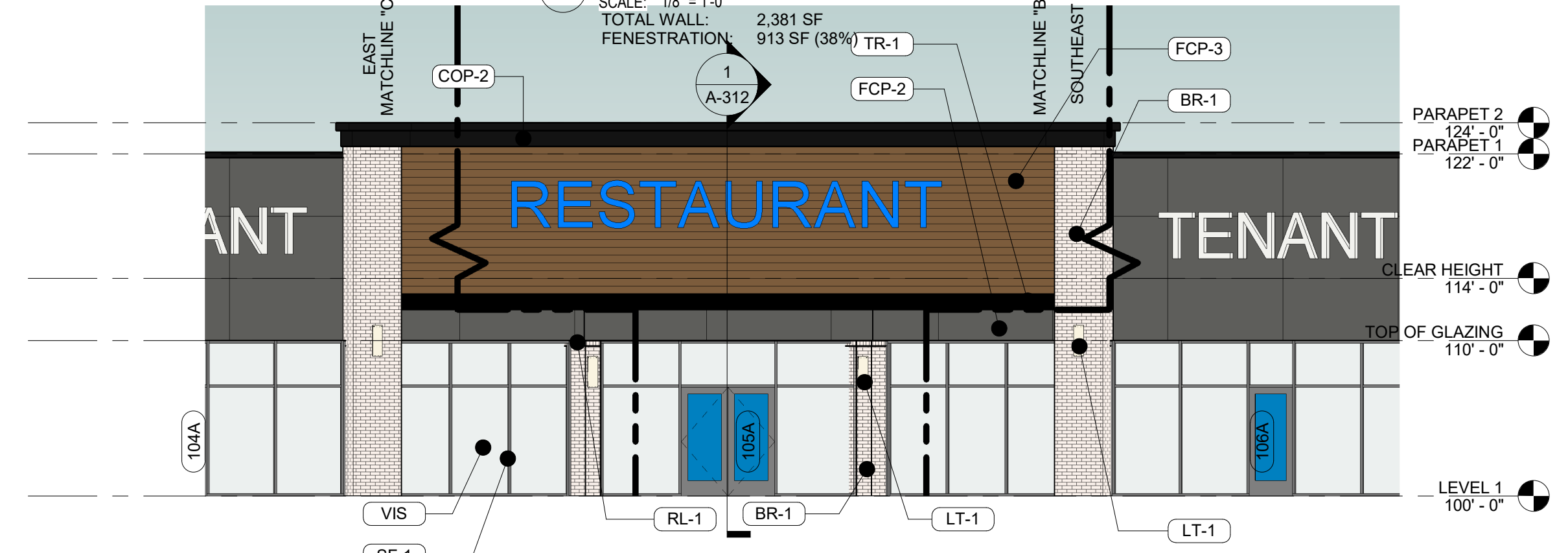
MISC EXTERIOR MATERIAL FINISHES

- TYPICAL U.O.N.
- EXPOSED CONCRETE: GRIND SMOOTH & RUB/COAT WITH CEMENT SLURRY.
 - EXPOSED LINTELS: GALVANIZED & PAINTED TO MATCH ADJACENT MATERIAL ABOVE.
 - FASCIA & SOFFIT: METAL PREFINISHED TO MATCH ADJACENT ROOF COLOR.
 - SCUPPERS, GUTTERS & DOWNSPOUTS: METAL PREFINISHED TO MATCH ADJ. MATERIAL.
 - CAULKS & SEALANTS: COLOR MATCHED TO ADJACENT MATERIAL.
 - HOLLOW METAL MAN DOORS & FRAMES: PAINTED TO MATCH ADJACENT MATERIAL.
 - LOUVERS: METAL PREFINISHED TO MATCH ADJACENT MATERIAL COLOR.



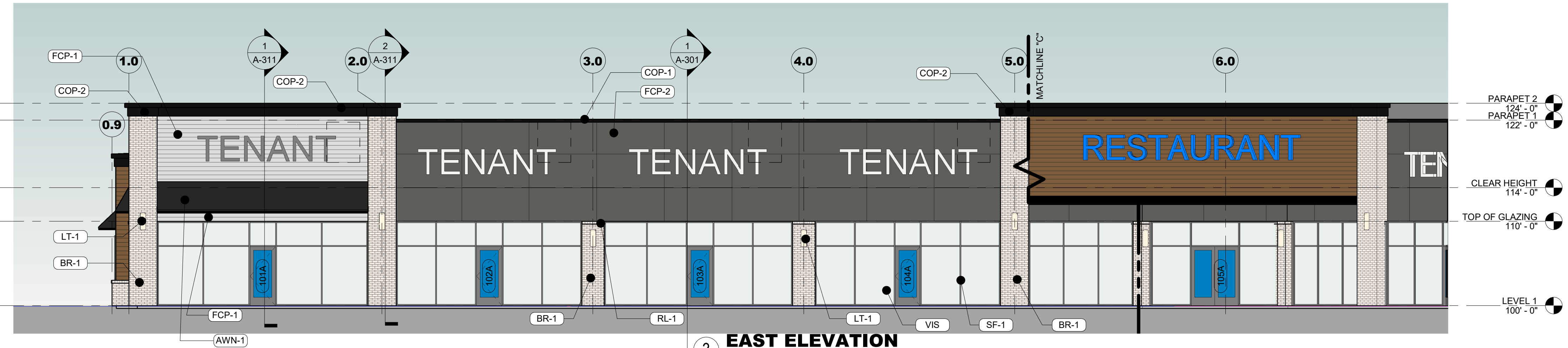
1 SOUTHEAST ELEVATION

SCALE: 1/8" = 1'-0"
TOTAL WALL: 2,381 SF
FENESTRATION: 913 SF (38%)



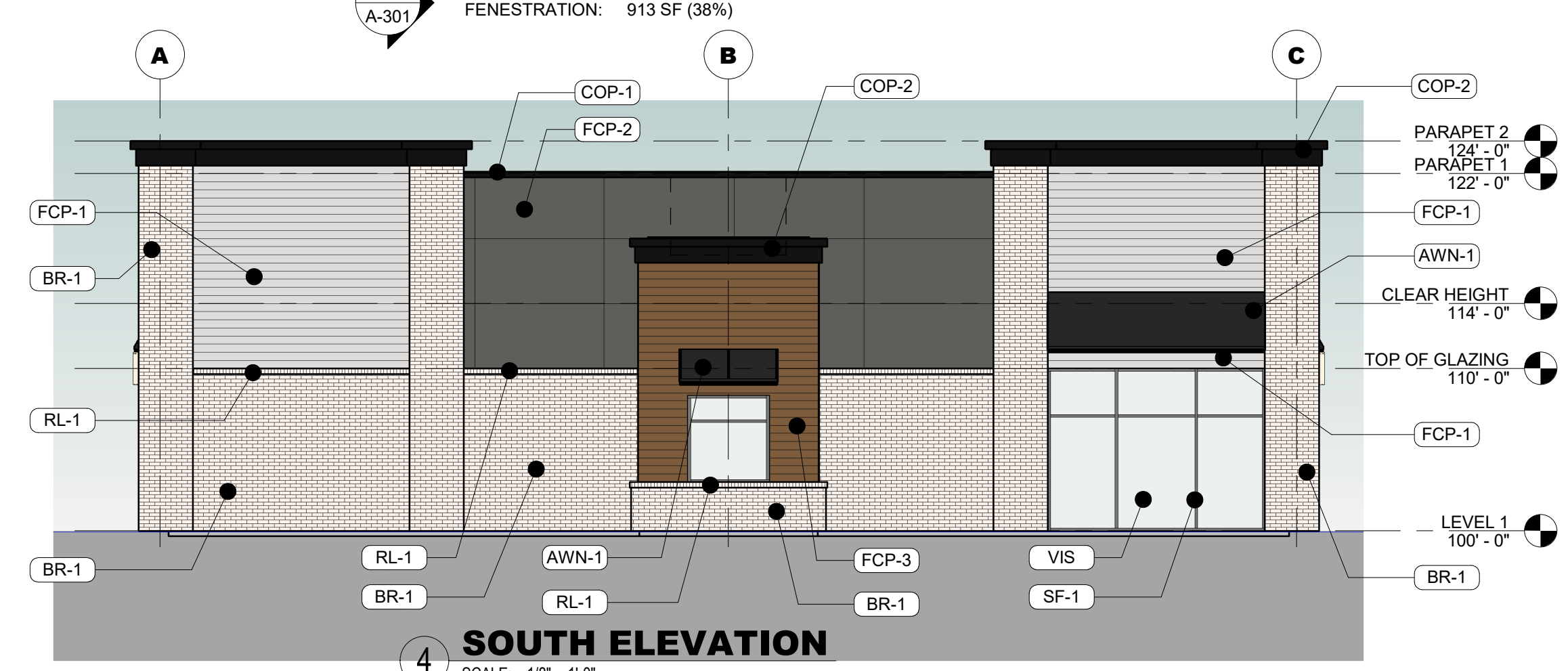
2 CENTER ELEVATION

SCALE: 1/8" = 1'-0"
TOTAL WALL: 1,173 SF
FENESTRATION: 380 SF (32%)



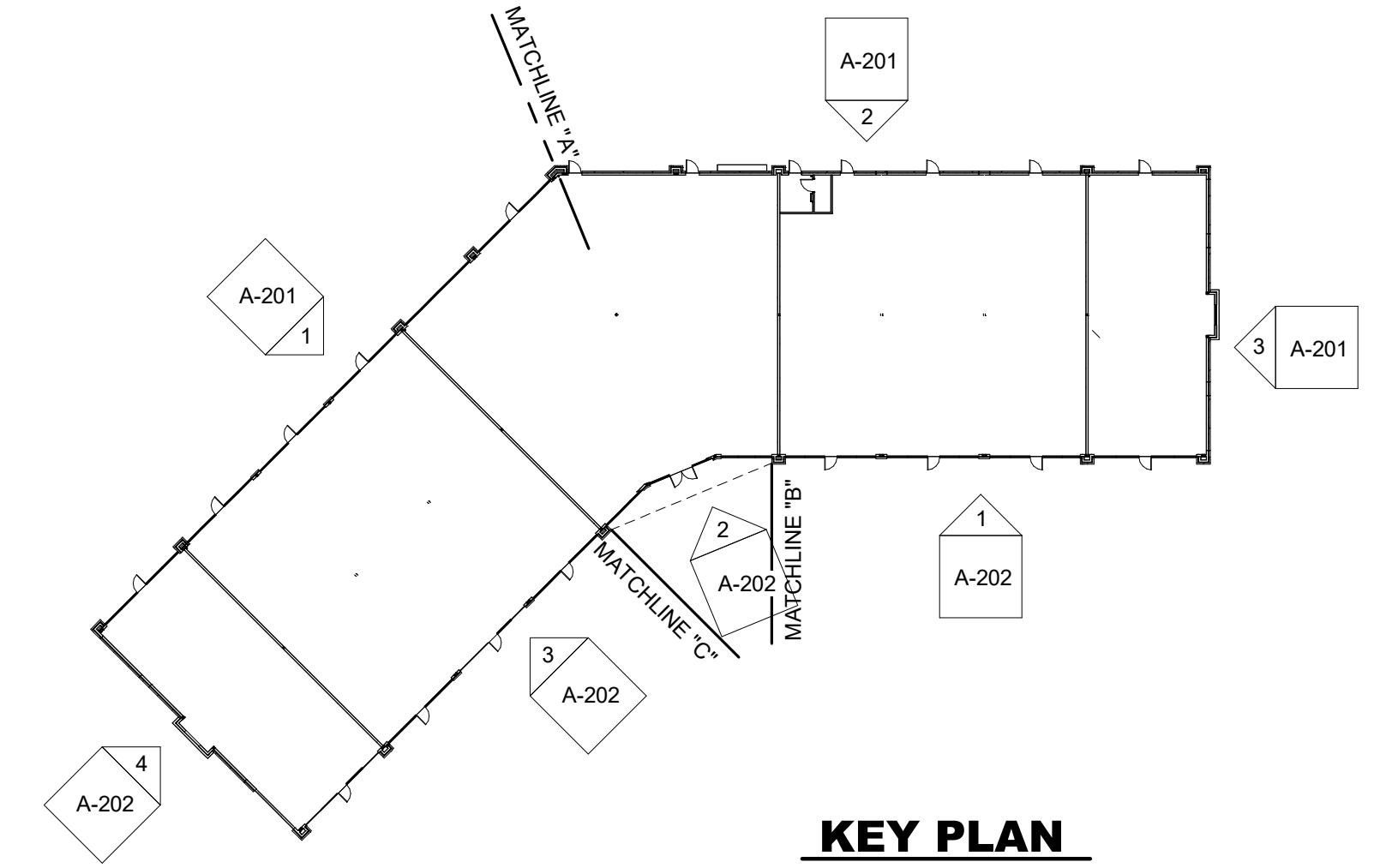
3 EAST ELEVATION

SCALE: 1/8" = 1'-0"
TOTAL WALL: 2,377 SF
FENESTRATION: 913 SF (38%)



4 SOUTH ELEVATION

SCALE: 1/8" = 1'-0"
TOTAL WALL: 1,680 SF
FENESTRATION: 158 SF (10%)



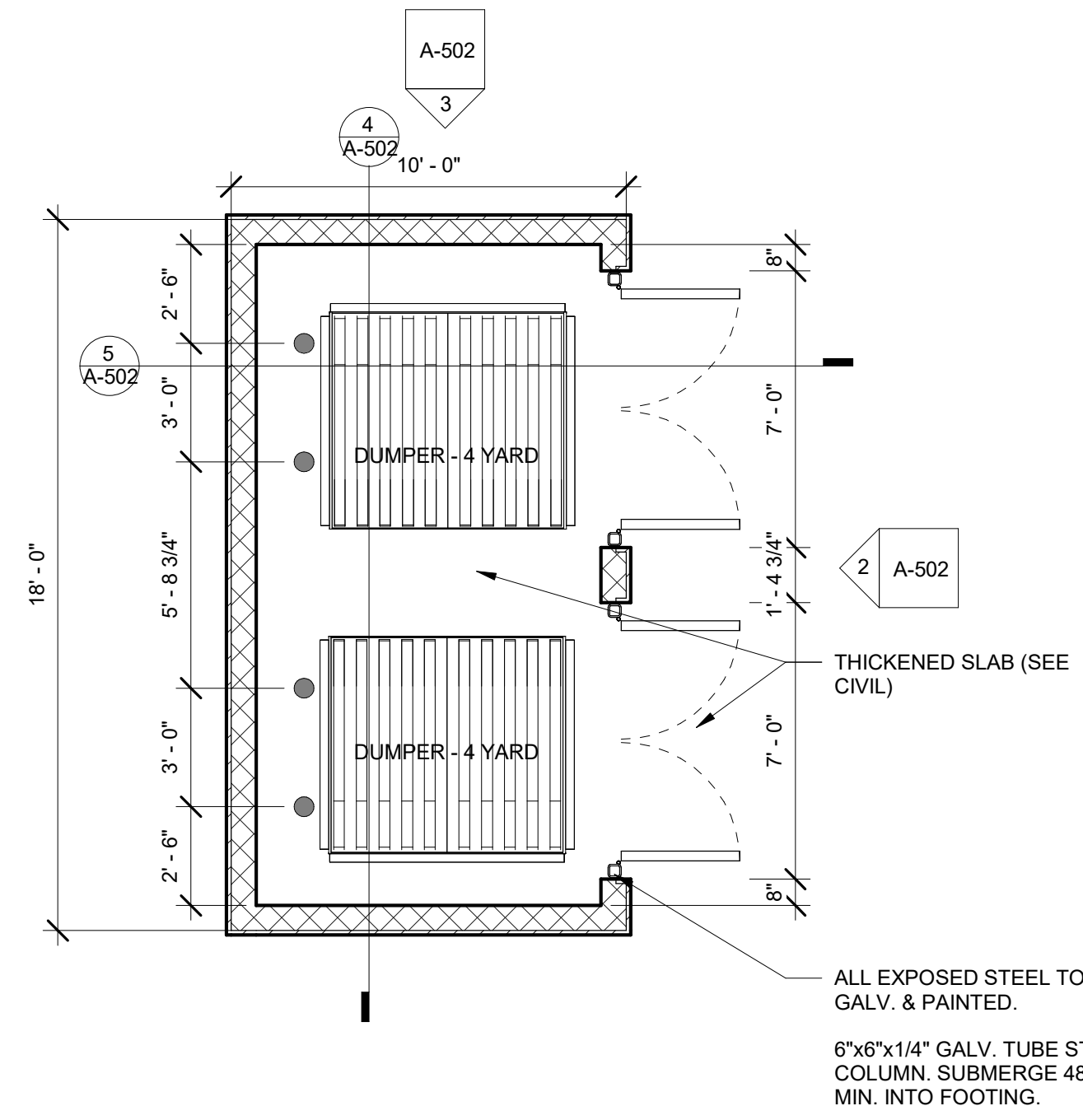
KEY PLAN

NOT FOR CONSTRUCTION

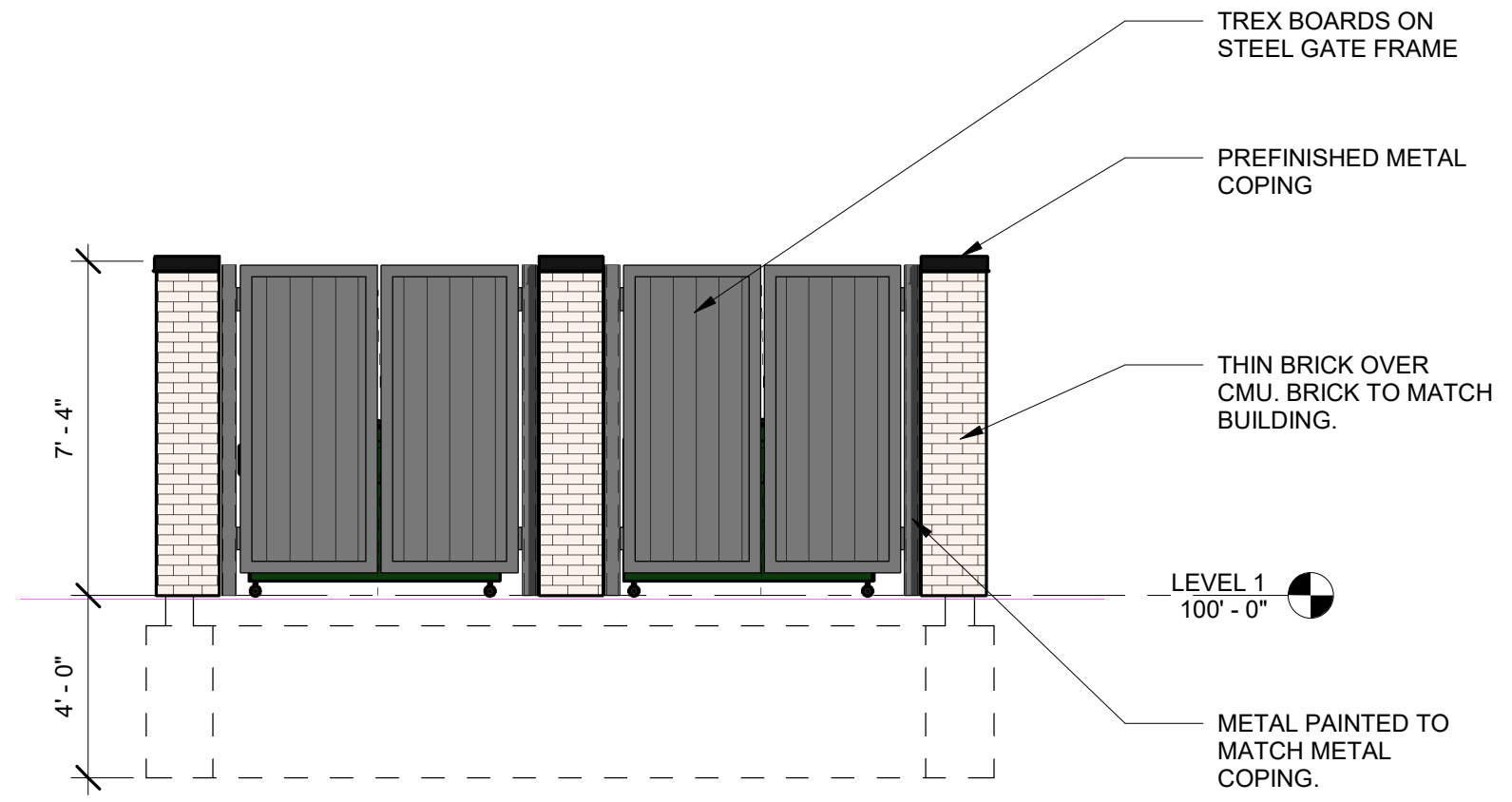
Rev. #	Issue / Revision	Date
1	PRELIMINARY EXT ELEVATIONS	08-29-2024
2	ISSUED FOR BUDGET PRICING	09-10-2024
3	SITE PLAN SUBMITTAL	09-16-2024
4	SITE PLAN SUBMITTAL	10-11-2024

Proj. No. SAA Proj. Mgr.
24068 TKW
Sheet Title
EXTERIOR ELEVATIONS
Sheet No.
A-202

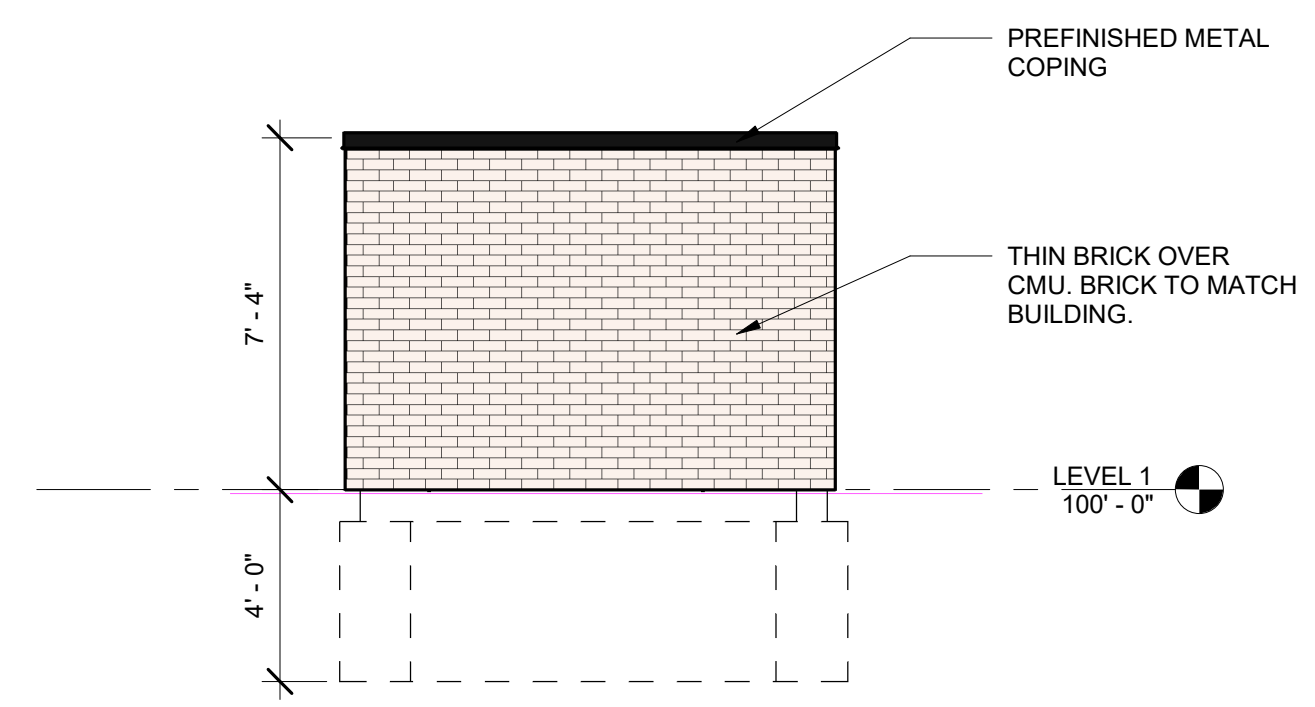
2/20/2024 10:00 AM Larson Kettlestone Retail, Waukee, IACAD: arch1204681 Larson Kettlestone.rvt
10/10/2024 11:12:17 AM



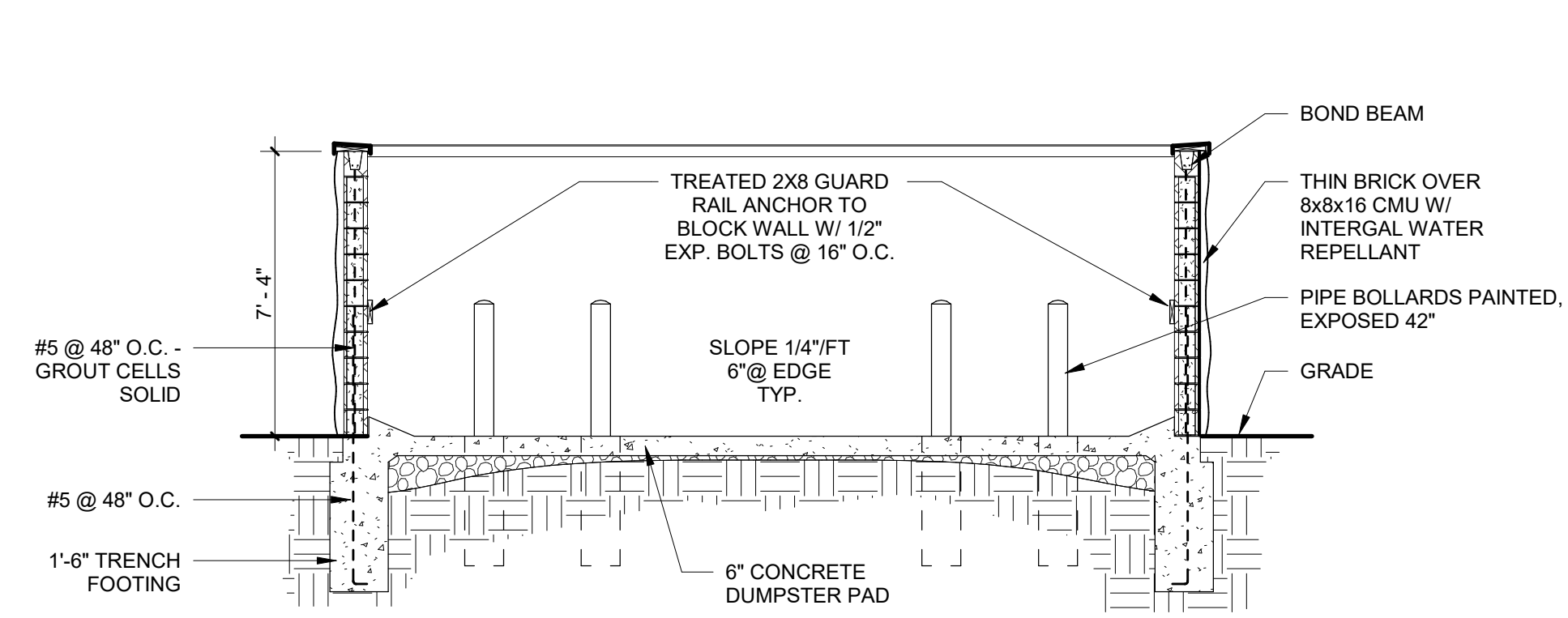
1 TRASH ENCLOSURE FLOOR PLAN
SCALE: 1/4" = 1'-0"



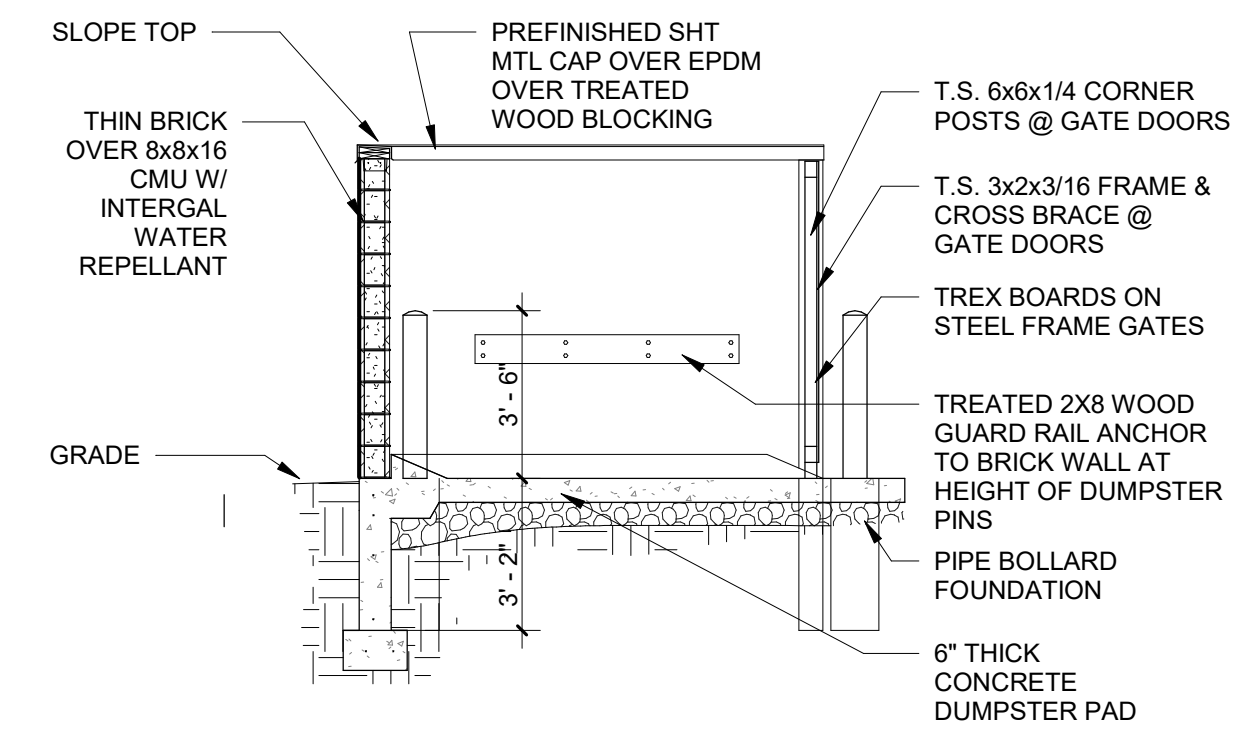
2 FRONT ELEVATION
SCALE: 1/4" = 1'-0"



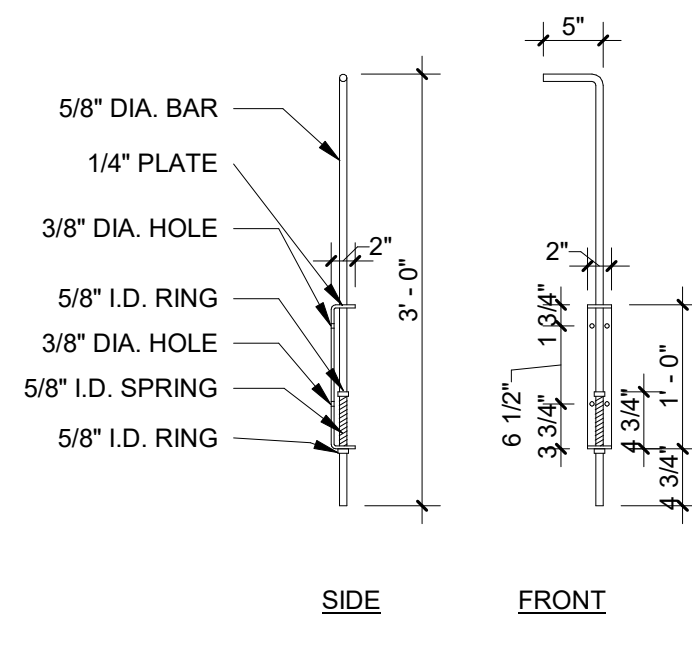
3 SIDE ELEVATION (REAR SIMILAR)
SCALE: 1/4" = 1'-0"



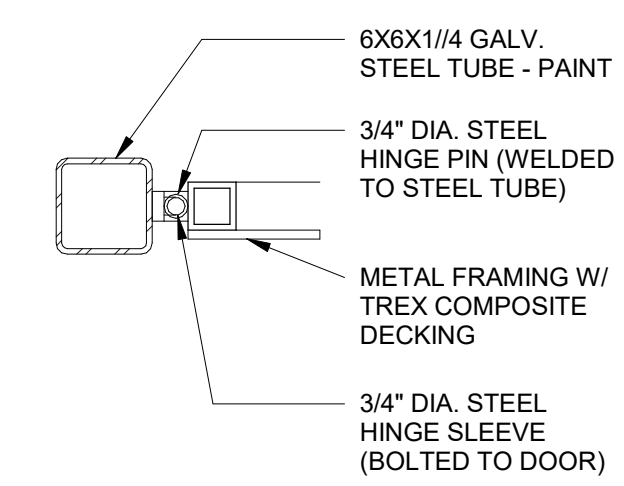
4 TRASH ENCLOSURE SECTION
SCALE: 1/4" = 1'-0"



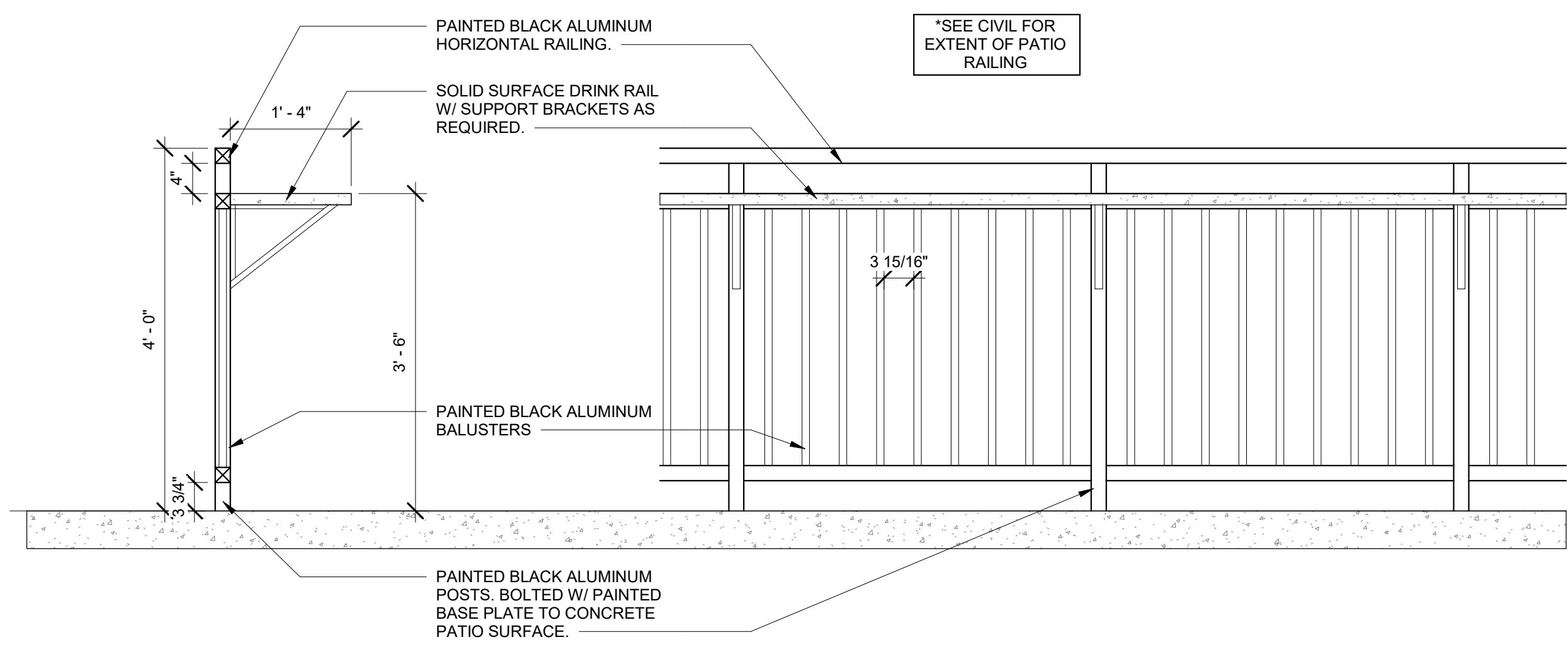
5 ENCLOSURE CROSS SECTION
SCALE: 1/4" = 1'-0"



6 TRASH PIN
SCALE: 3/4" = 1'-0"



7 TRASH HINGE
SCALE: 1 1/2" = 1'-0"



8 PATIO RAILING DETAIL
SCALE: 3/4" = 1'-0"

This drawing has been prepared by the Architect's direct supervision. This drawing is provided as an advisory only and is intended for use on this project only. Any information contained herein without the prior written consent of the Architect, Simonson + Associates Architects, LLC.

NOT FOR CONSTRUCTION

Rev. #	Issue / Revision	Date
3	SITE PLAN SUBMITTAL	09-16-2024

Proj. No. SAA 24068 Proj. Mgr. TKW
Sheet Title
TRASH ENCLOSURE
Sheet No.

J:\2024\24068 Larson Kettlestone Retail, Waukee, IA\CAD\Arch\24068 Larson Kettlestone.rvt
9/16/2024 10:52:39 AM