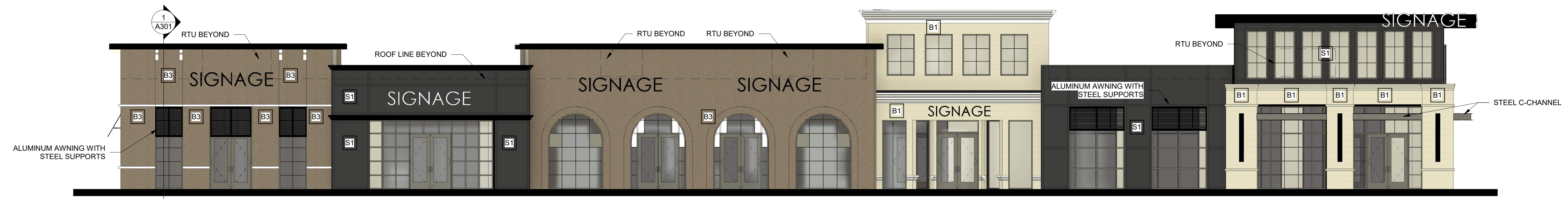


MATERIAL SCHEDULE - WEST

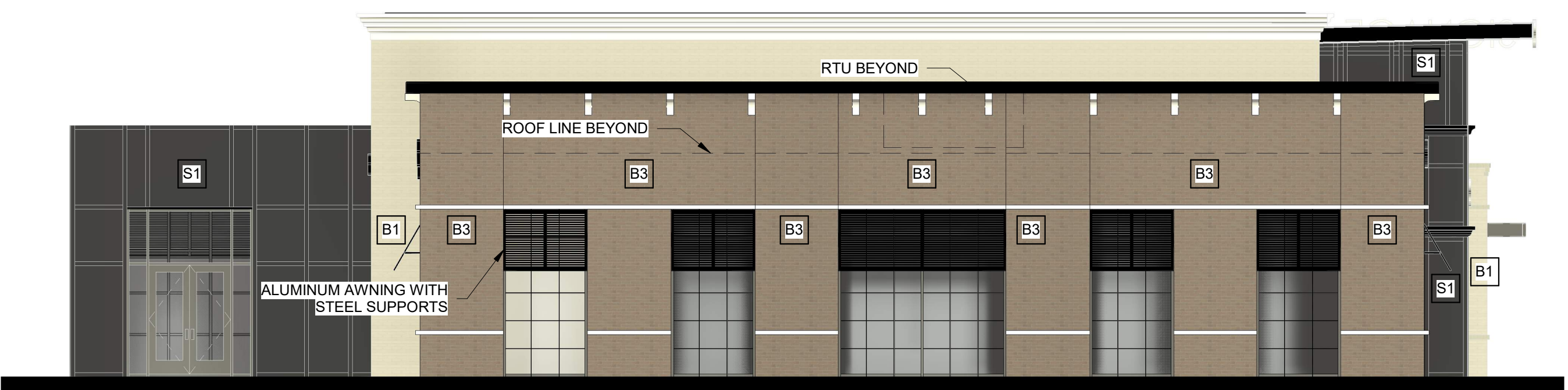
Type Mark	Description	Area	Percentage
	Glazing	1504 SF	32%
B1	Modular Brick - Light	1221 SF	26%
B3	Modular Brick - Red	1250 SF	26%
S1	Fiber Cement Panel Siding - Black	760 SF	16%



1 WEST ELEVATION
SCALE: 1/8" = 1'-0"

MATERIAL SCHEDULE - NORTH

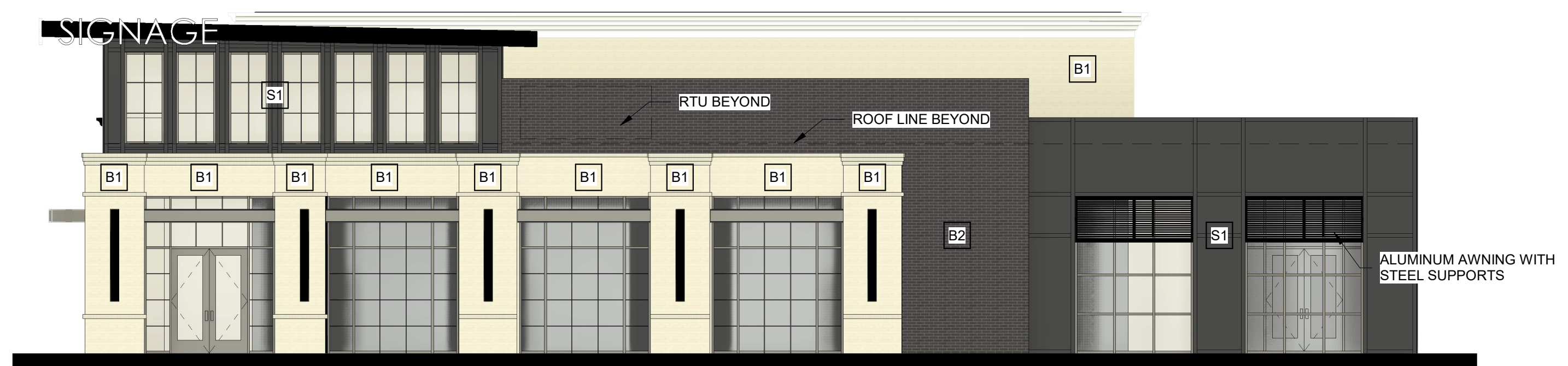
Type Mark	Description	Area	Percentage
	Glazing	540 SF	21%
B1	Modular Brick - Light	461 SF	18%
B3	Modular Brick - Red	1042 SF	40%
S1	Fiber Cement Panel Siding - Black	568 SF	22%



2 NORTH ELEVATION
SCALE: 1/8" = 1'-0"

MATERIAL SCHEDULE - SOUTH

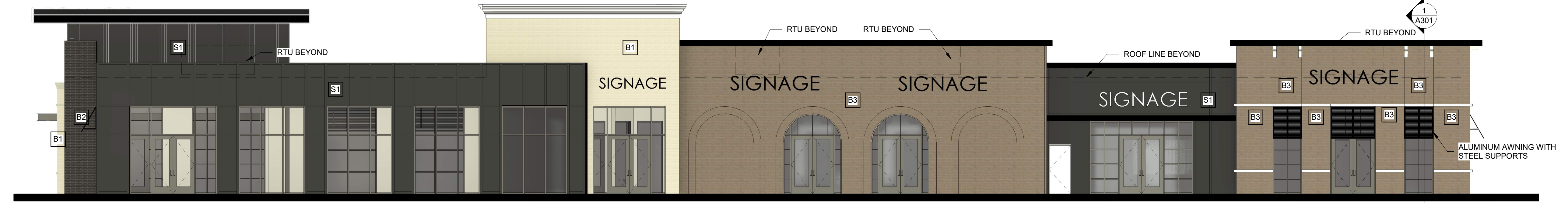
Type Mark	Description	Area	Percentage
	Glazing	796 SF	39%
B1	Modular Brick - Light	432 SF	21%
B2	Modular Brick - Dark	378 SF	19%
S1	Fiber Cement Panel Siding - Black	435 SF	21%



3 SOUTH ELEVATION
SCALE: 1/8" = 1'-0"

MATERIAL SCHEDULE - EAST

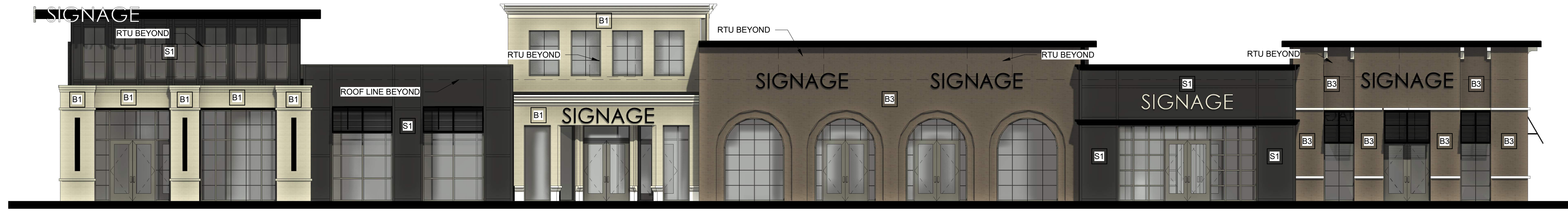
Type Mark	Description	Area	Percentage
	Glazing	1077 SF	26%
B1	Modular Brick - Light	331 SF	8%
B2	Modular Brick - Dark	85 SF	2%
B3	Modular Brick - Red	1478 SF	36%
S1	Fiber Cement Panel Siding - Black	1135 SF	28%



4 EAST ELEVATION
SCALE: 1/8" = 1'-0"

MATERIAL SCHEDULE - WEST

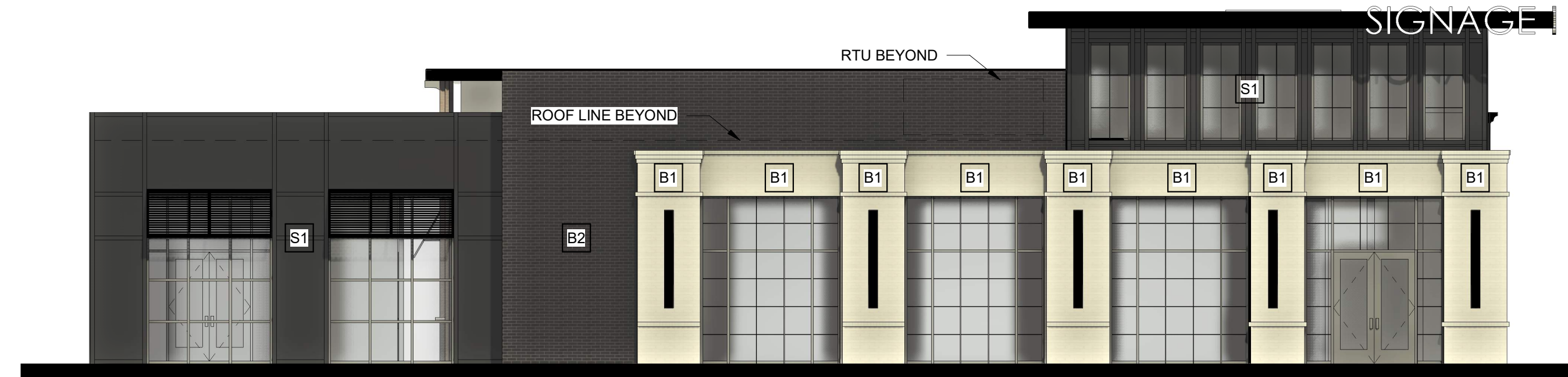
Type Mark	Description	Area	Percentage
	Glazing	1504 SF	36%
B1	Modular Brick - Light	668 SF	16%
B3	Modular Brick - Red	1254 SF	30%
S1	Fiber Cement Panel Siding - Black	752 SF	18%



1 WEST ELEVATION
SCALE: 1/8" = 1'-0"

MATERIAL SCHEDULE - NORTH

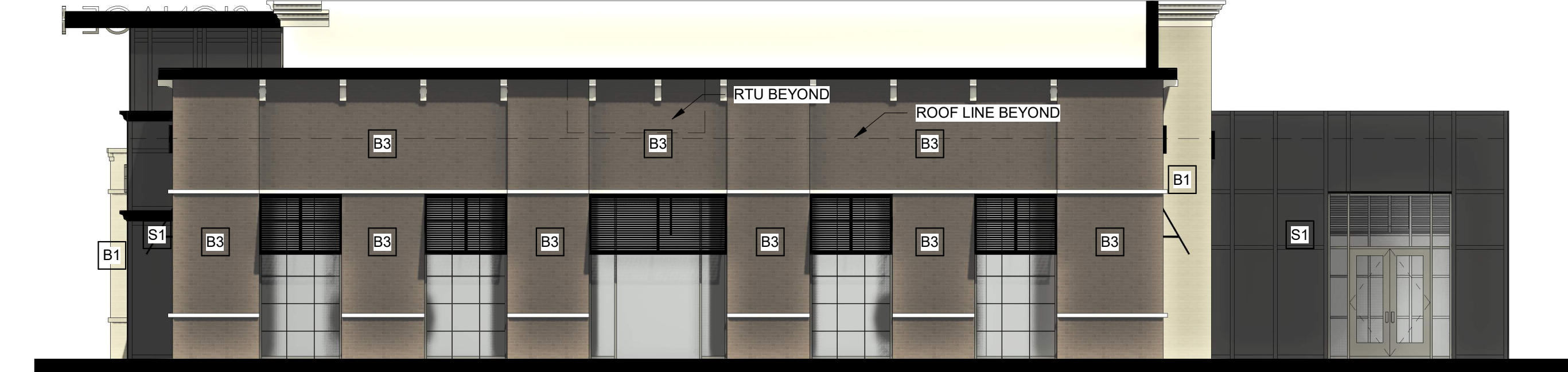
Type Mark	Description	Area	Percentage
	Glazing	796 SF	39%
B1	Modular Brick - Light	432 SF	21%
B2	Modular Brick - Dark	379 SF	18%
S1	Fiber Cement Panel Siding - Black	442 SF	22%



2 NORTH ELEVATION
SCALE: 1/8" = 1'-0"

MATERIAL SCHEDULE - SOUTH

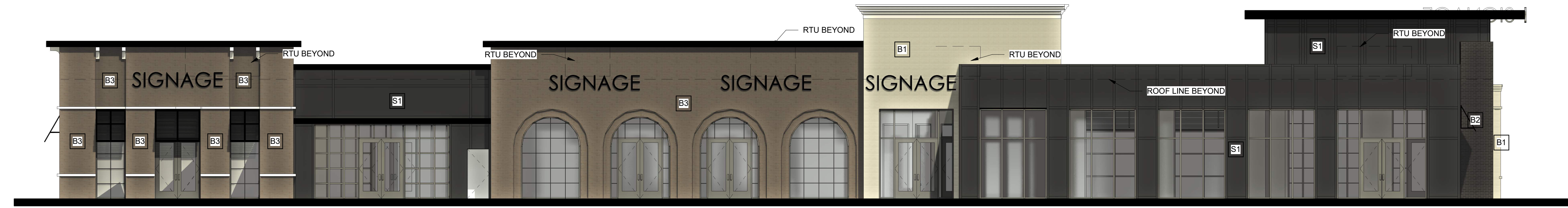
Type Mark	Description	Area	Percentage
	Glazing	516 SF	20%
B1	Modular Brick - Light	151 SF	6%
B3	Modular Brick - Red	1318 SF	50%
S1	Fiber Cement Panel Siding - Black	629 SF	24%



3 SOUTH ELEVATION
SCALE: 1/8" = 1'-0"

MATERIAL SCHEDULE - EAST

Type Mark	Description	Area	Percentage
	Glazing	1279 SF	31%
B1	Modular Brick - Light	336 SF	8%
B2	Modular Brick - Dark	85 SF	2%
B3	Modular Brick - Red	1279 SF	31%
S1	Fiber Cement Panel Siding - Black	1170 SF	28%



4 EAST ELEVATION
SCALE: 1/8" = 1'-0"

