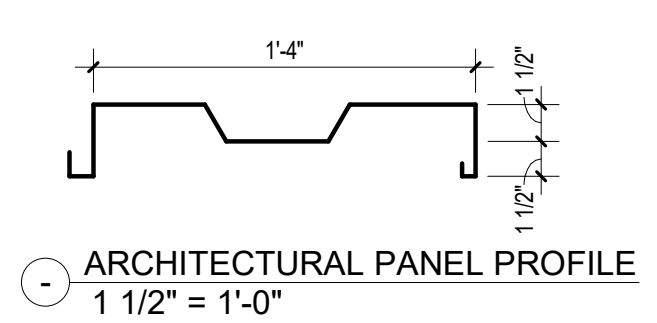
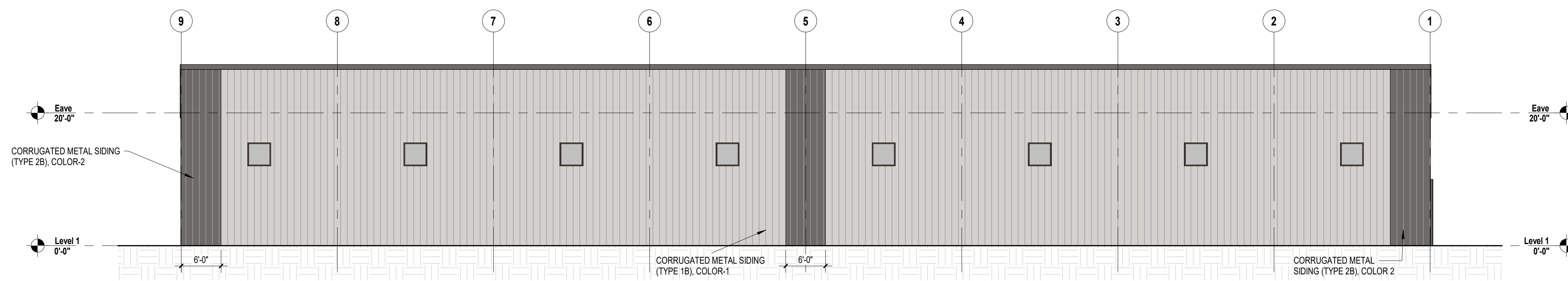


**EXTERIOR MATERIAL SELECTIONS**

- METAL SIDING, COLOR-1:** METALLIC BUILDING SYSTEMS, ASH GRAY
  - TYPE 1A: ARCHITECTURAL METAL PANELS, 26-GAUGE AVP PANEL, SHADOW RIB PANEL, WITH CONCEALED FASTENERS
  - TYPE 1B: CORRUGATED METAL PANELS W/ MATCHING COLOR FASTENERS
- METAL SIDING, COLOR-2:** METALLIC BUILDING SYSTEMS, CHARCOAL GRAY
  - TYPE 2A: ARCHITECTURAL METAL PANELS, 26-GAUGE AVP PANEL, SHADOW RIB PANEL, WITH CONCEALED FASTENERS
  - TYPE 2B: CORRUGATED METAL PANELS W/ MATCHING COLOR FASTENERS
- ROOFING:** METALLIC BUILDING SYSTEMS, 26-GAUGE, STANDING SEAM, GALVALUME
  - OVERHANG: 10" SHEET METAL FASCIA / GUTTER, 9" PROJECTION, MATCH SIDING COLOR 2
- BRICK, COLOR-1:** COUNTY MATERIALS HERITAGE COLLECTION, UTILITY SIZE, COLOR GRAYSTONE
- BRICK, COLOR-2:** COUNTY MATERIALS HERITAGE COLLECTION, UTILITY SIZE, COLOR SLATE
- STOREFRONT / WINDOWS:** ALUMINUM FRAMES, DARK BRONZE ANODIZED, GRAY TINT GLASS
  - RECESS 2" FROM FACE OF WALL
  - GLAZING 50% MIN TRANSMITTANCE FACTOR, 0.25 MAX REFLECTANCE FACTOR



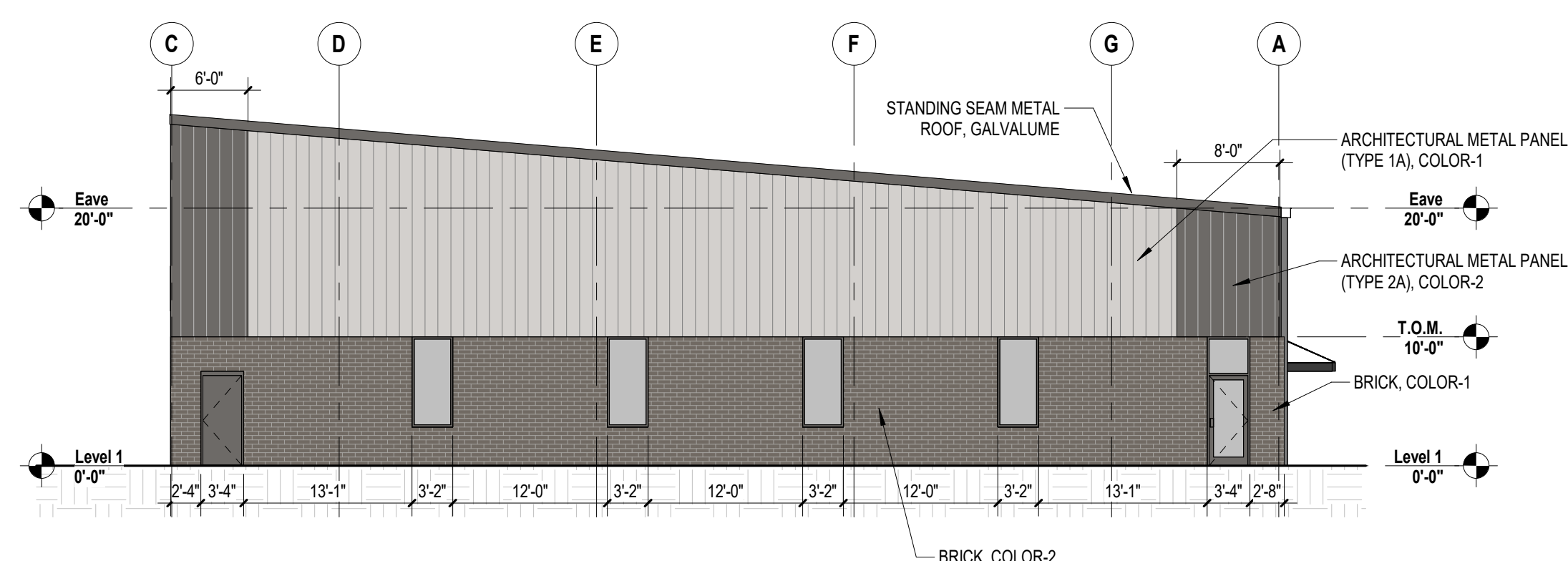
5 3D View SW



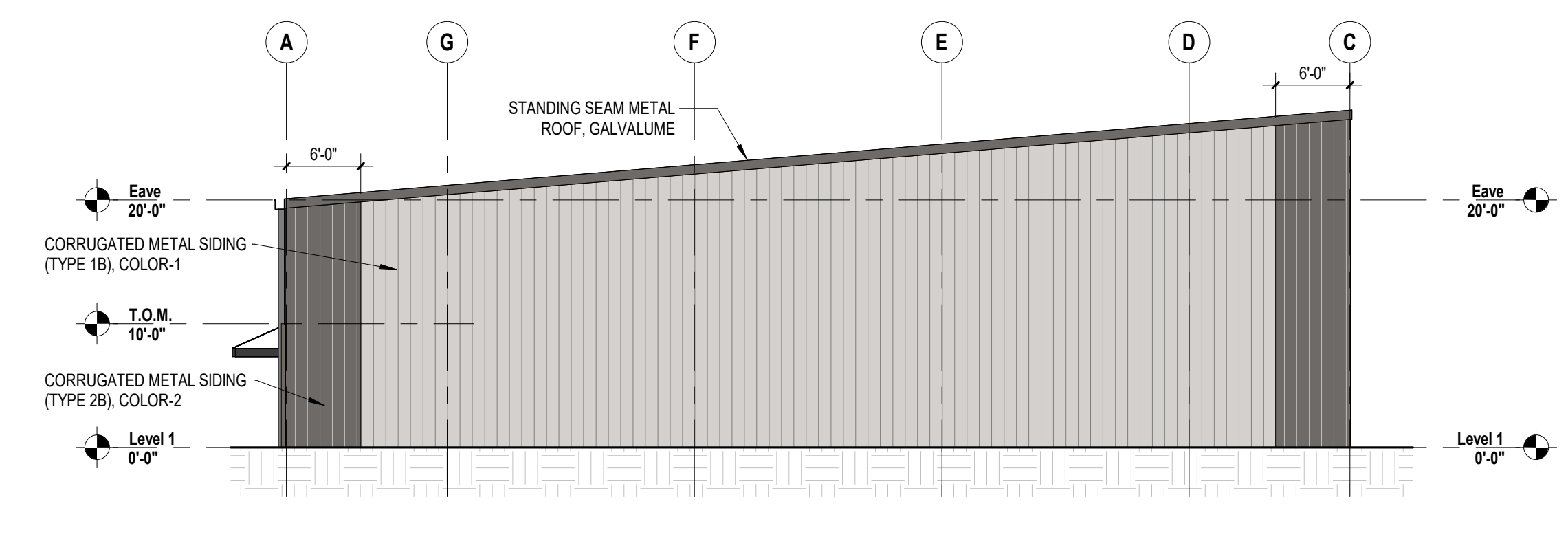
4 WEST ELEVATION  
3/32" = 1'-0"

EXTERIOR MATERIALS	EAST		SOUTH		WEST		NORTH		SUMMARY (ALL SIDES)			
	AREA	%	AREA	%	AREA	%	AREA	%	AREA	%	SUBTOTAL	
MAJOR FACADE MATERIALS												
STOREFRONT/GLAZING	0	0%	122	6%	98	2%	0	0%	220	2%		OF WALL COVERING AREA
BRICK	605	32%	718	37%	0	0%	0	0%	1,323	12%	37%	
ARCHITECTURAL METAL PANELS	1,308	68%	1,120	57%	0	0%	0	0%	2,428	22%		
MINOR FACADE MATERIALS												OF WALL COVERING...
CORRUGATED METAL PANELS	0	0%	0	0%	4,895	98%	1,982	100%	6,877	63%	63%	
OPENINGS												OF TOTAL WALL
DOORS	1,714	47%	24	1%	0	0%	0	0%	1,738	14%	14%	
WALL COVERING AREA LESS DOORS	1,913		1,960		4,993		1,982		10,848			
TOTAL WALL AREA INCL OPENINGS	3,627		1,984		4,993		1,982		12,586			

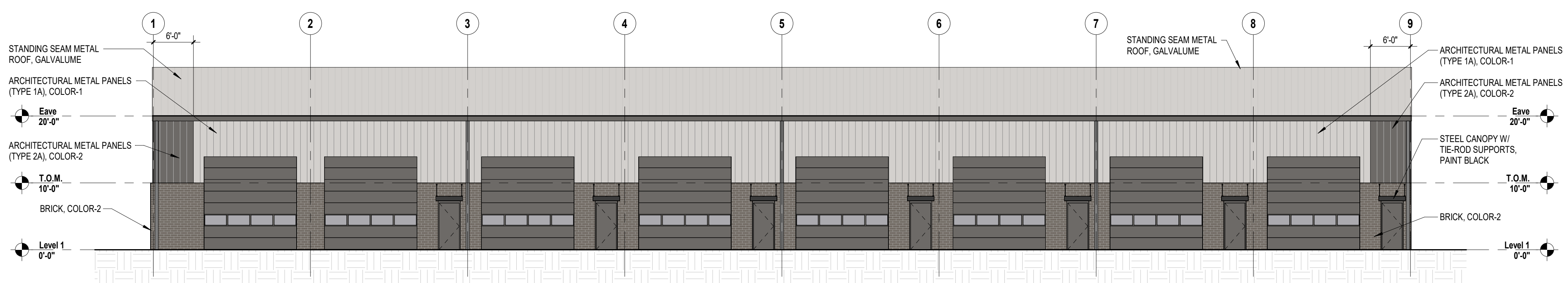
NOTE: ARCHITECTURAL METAL PANELS HAVE CONCEALED FASTENERS AND ARE NOT CORRUGATED



3 SOUTH ELEVATION  
3/32" = 1'-0"



1 NORTH ELEVATION  
3/32" = 1'-0"



2 EAST ELEVATION  
3/32" = 1'-0"

**Frontier Ave Warehouse**  
1035 Frontier Ave  
Waukee, IA

Next Phase Development, LLC

Revisions	

ISSUE DATE: - PROJ. #: 24025  
EXTERIOR ELEVATIONS

2024-07-15 - FOR SITE PLAN REVIEW