

NOTE: ALL SIGNAGE IS TO BE REVIEWED AND APPROVED WITH A SEPERATE SIGN PERMIT BY THE CITY OF WAUKEE COMMUNITY DEVELOPMENT DEPARTMENT.

KEYNOTES

Keynote	Description
401	SIGN BY VENDOR. POWER REQUIRED
404	YKK ALUMINUM STOREFRONT SYSTEM. GLAZING TO BE GL-1 OR GL-1A. SEE SHEET A601 FOR DETAILS.
405	FIBER CEMENT 2X6 PAINTED PT-4 FINISH. SEE STRUCTURAL FOR DETAILS.
406	PORCELAIN TILE WAINSCOT. B-2, T-8, & T-7 FINISH.
407	BREAK METAL COLUMN ENCLOSURE. MTL-1 FINISH.
408	BREAK METAL ROOF OVERHANG ENCLOSURE. MTL-1 FINISH. SEE SHEET A121 FOR LIGHT COVE LOCATION.
409	EIFS WITH DRAINAGE SYSTEM. DRY-1 FINISH.
410	HARDIE SIDING. COOLER/FREEZER SCREEN. HDP-2 FINISH.
418	FASCIA SIGN BY VENDOR. NO POWER REQUIRED.
419	ROOF BLADE CLAD IN BREAK METAL. SEE STRUCTUAL FOR CONSTRUCTION DETAILS.



10700 E Research Drive
Suite 250
Milwaukee, WI
53226

T (262) 373-8880
acs-architects.com

NPB | MKE | CIN

NOT PUBLISHED. ALL RIGHTS RESERVED. THE ABOVE DRAWINGS, SPECIFICATION, IDEAS, DESIGNS, AND ARRANGEMENTS REPRESENTED THEREBY ARE AND SHALL REMAIN THE PROPERTY OF THE ARCHITECT. NO PART THEREOF SHALL BE REPRODUCED, COPIED, ADAPTED, DISCLOSED OR DISTRIBUTED TO OTHERS, SOLD, PUBLISHED OR OTHERWISE USED WITHOUT PRIOR WRITTEN CONSENT OF AND APPROPRIATE COMPENSATION TO THE ARCHITECT. VISUAL CONTACT WITH THESE DRAWINGS OR SPECIFICATIONS SHALL CONSTITUTE CONCLUSIVE EVIDENCE OF ACCEPTANCE OF THESE RESTRICTIONS. COPYRIGHT ACS, INC. 2018

Stamp:

I HEREBY CERTIFY THAT THIS PLAN AND SPECIFICATION WAS PREPARED BY ME OR UNDER MY DIRECT SUPERVISION AND THAT I AM A DULY REGISTERED ARCHITECT OR ENGINEER UNDER THE LAWS OF THE STATE OF PROJECT STATE AS SIGNIFIED BY MY HAND AND SEAL.

Owner's Project Number:

Project Owner:

STEAK 'N SHAKE

Project Address:



1045 SE ALICE'S RD
WAUKEE, IA 50263

Issue For:

WAUKEE SET

Issue Date:

01/22/2025

DATE	REVISION
1 12/17/2024	ENTITLEMENT RESUBMITTAL
2 01/09/2025	ENTITLEMENT RESUBMITTAL

1 12/17/2024

ENTITLEMENT RESUBMITTAL

2 01/09/2025

ENTITLEMENT RESUBMITTAL

PRINCIPAL IN CHARGE: DAVID RHODES

PROJECT MANAGER: JERRY WICK

DRAWN BY: T.KASPER

ACS PROJECT NUMBER:

SS3A0002.00

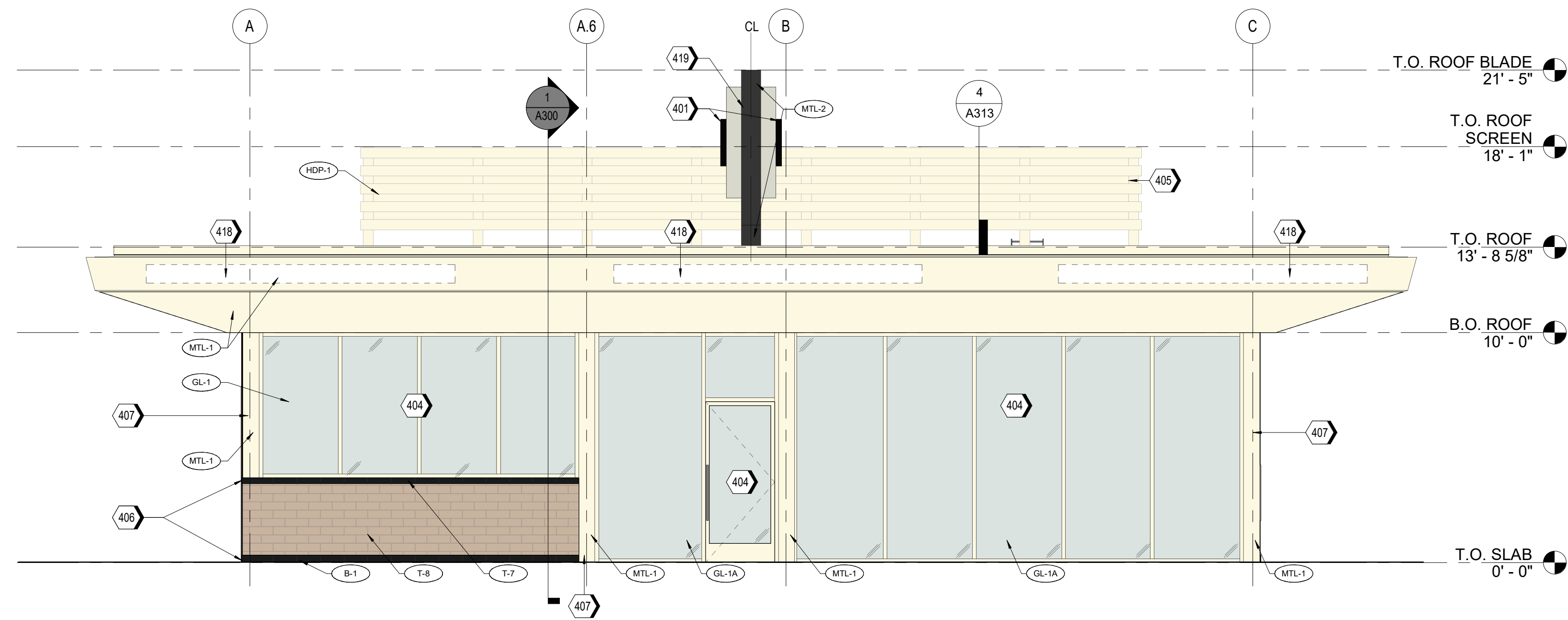
SHEET TITLE:

EXTERIOR ELEVATIONS

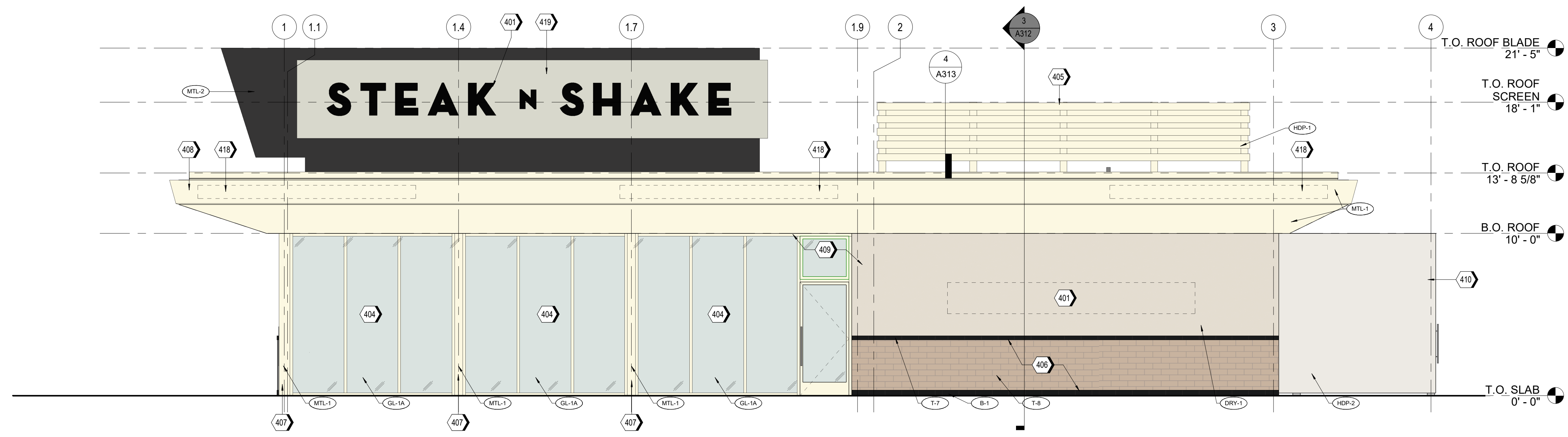
SCALE: 1/4" = 1'-0"

SHEET NUMBER:

A200

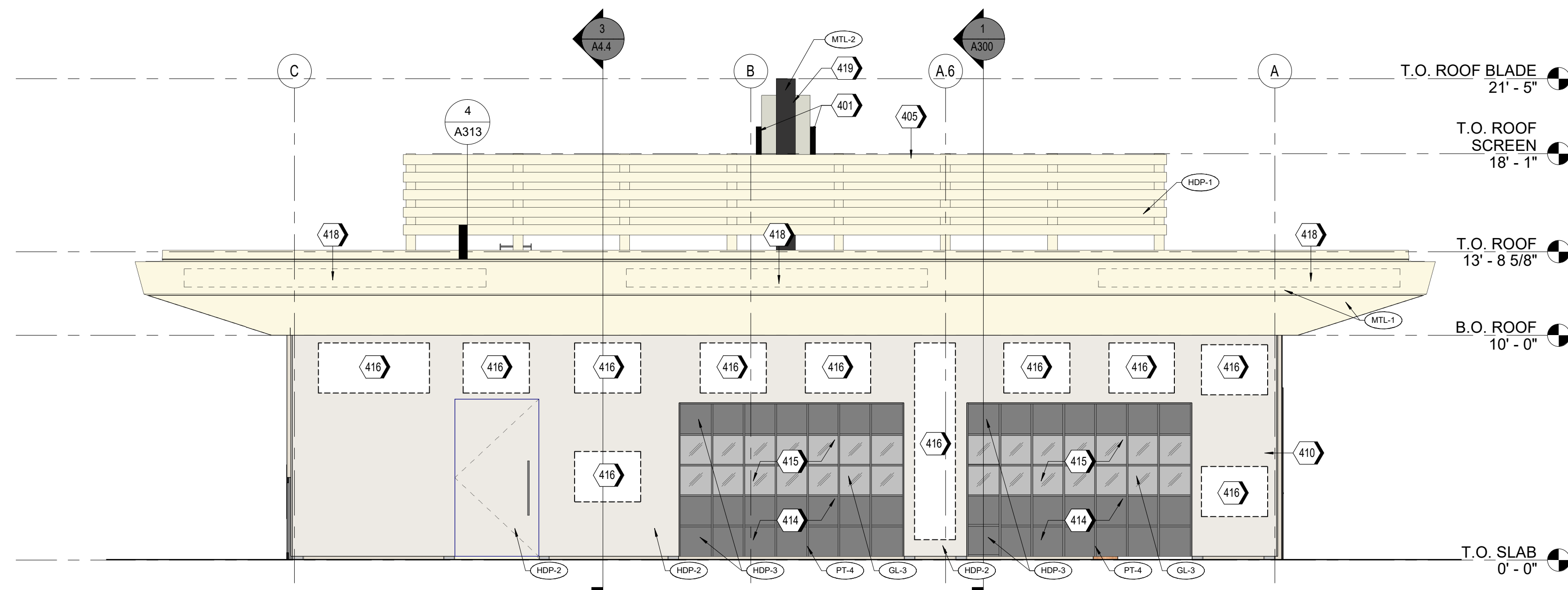


1 FRONT ELEVATION
SCALE 1/4" = 1'-0"



2 RIGHT ELEVATION
SCALE 1/4" = 1'-0"

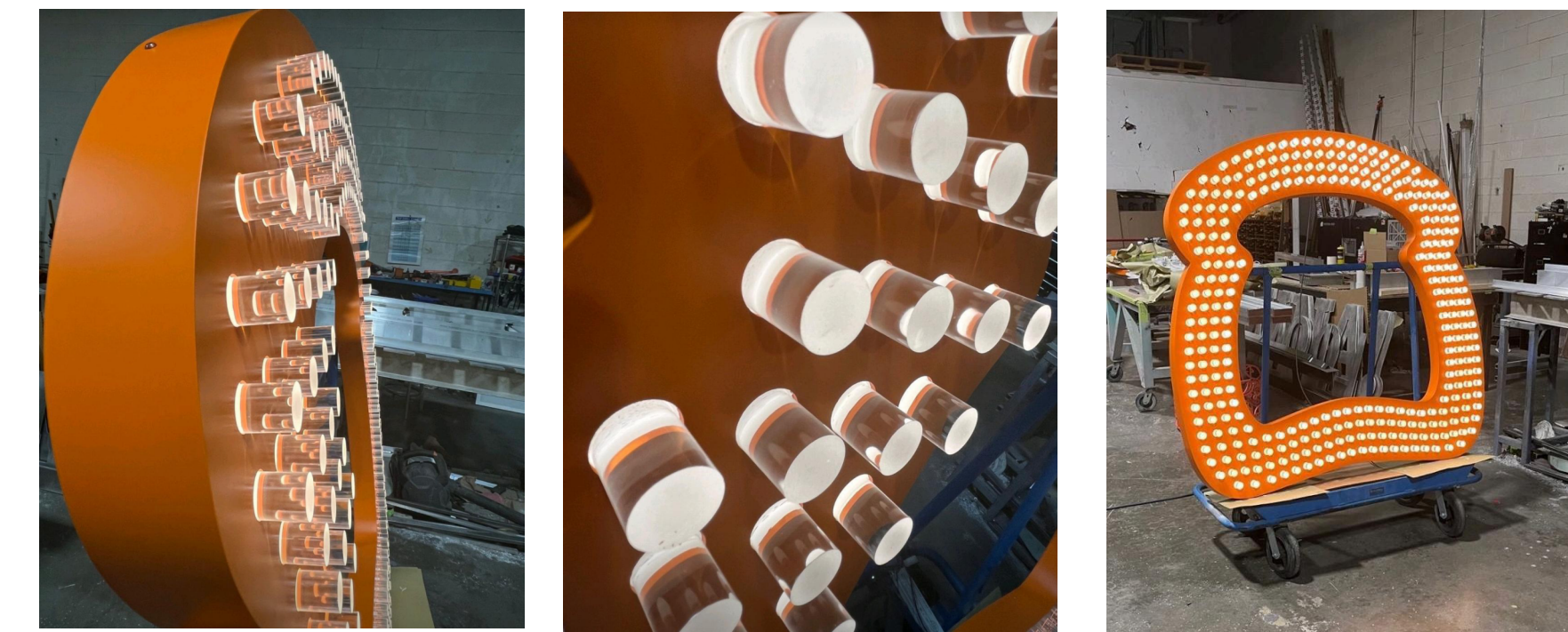
NOTE: ALL SIGNAGE IS TO BE REVIEWED AND APPROVED WITH A SEPERATE SIGN PERMIT BY THE CITY OF WAUKEE COMMUNITY DEVELOPMENT DEPARTMENT.



3 REAR ELEVATION - AT COOLER ENCLASURE
SCALE 1/4" = 1'-0"

KEYNOTES

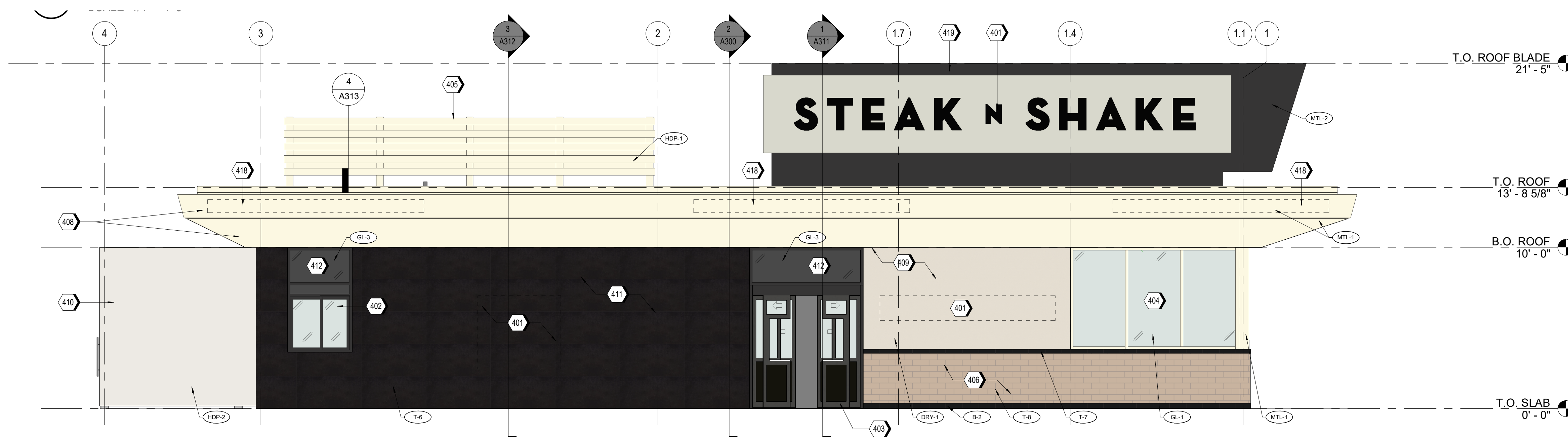
Keynote	Description
401	SIGN BY VENDOR. POWER REQUIRED.
402	4'-0" X 6'-4 1/2" DRIVE THRU WINDOW WITH SPANDREL TRANSOM (GL-3) ABOVE.
403	7'-1/2" X 10'-0" TORMAX "TX9200" - AUTOMATIC SERVICE SLIDING DOOR WITH SPANDREL TRANSOM (GL-3) ABOVE.
404	YKK ALUMINUM STOREFRONT SYSTEM. GLAZING TO BE GL-1 OR GL-1A. SEE SHEET A01 FOR DETAILS.
405	FIBER CEMENT 2X6 PAINTED PT-4 FINISH. SEE STRUCTURAL FOR DETAILS.
406	PORCELAIN TILE WAINSCOT. B-2, T-8, & T-7 FINISH.
408	BREAK METAL ROOF OVERHANG ENCLOSURE. MTL-1 FINISH. SEE SHEET A121 FOR LIGHT COVE LOCATION.
409	EIFS WITH DRAINAGE SYSTEM. DRY-1 FINISH.
410	HARDIE SIDING, COOLER/FREEZER SCREEN. HDP-2 FINISH.
411	24" x 42" PORCELAIN TILE. T-6 FINISH.
412	ALUMINUM STOREFRONT SYSTEM - SPANDREL GLASS (GL-3)
414	FAUX GARAGE DOOR. SMOOTH HARDIE PANEL (HDP-3)
415	FAUX WINDOWS. SPANDREL GLASS WITH GL-3 FINISH.
416	SIGNAGE BY VENDOR
418	FASCIA SIGN BY VENDOR. NO POWER REQUIRED.
419	ROOF BLADE CLAD IN BREAK METAL. SEE STRUCTURAL FOR CONSTRUCTION DETAILS.



4 EXHIBIT A - SIGN REFERENCE

TOTAL EXTERIOR MATERIAL BREAKDOWN

%	SQFT	DISCRIPTION	MATERIALS FINISHES
9.5%	570 SQFT	ROOF SCEEN	1X6 HARDIE TRIM - PT-3
42%	2501.5 SQFT	BREAK METAL CANOPY	BREAK METAL - PT-3
4%	239.5 SQFT	PORCELAIN TILE WAINSCOT	PORCELAIN TILE - T-7, T-8
4.2%	250 SQFT	E.I.F.S.	DRYVIT - DRY-1
4.7%	280.5 SQFT	LARGE TILE	LARGE FORMAT TILE - 24"X48" - T-6
12.8%	764 SQFT	STOREFRONT	STOREFRONT SYSTEM, PT-3, GL-1, GL-1A
10.4%	621.5 SQFT	ROOF BLADE	BREAK METAL - PT-1, PT-3
10.4%	622 SQFT	REAR SCREEN	HARDIE PANELS - SIERRA 8 - HDP-1, HDP-2
1.5%	94.5 SQFT	DRIVE THRU WINDOW AND DOOR	DRIVE THRU DOOR & WINDOW - PT-3, GL-1, GL-2
4.8%	286 SQFT	SIGNAGE - MISC	VARRIOUS SIGNAGE IN SEPERATE SUBMITTAL
1.6%	100 SQFT	SIGN ON BLADE	BLADE SIGNAGE IN SEPERATE SUBMITTAL



1 LEFT ELEVATION
SCALE 1/4" = 1'-0"



10700 E Research Drive
Suite 250
Milwaukee, WI
53226

T (262) 373-8880
acs-architects.com

NPB | MKE | CN

NOT PUBLISHED. ALL RIGHTS RESERVED THE ABOVE DRAWINGS, SPECIFICATION, IDEAS, DESIGNS AND ARRANGEMENTS REPRESENTED THEREBY ARE AND SHALL REMAIN THE PROPERTY OF THE ARCHITECT. NO PART THEREOF SHALL BE REPRODUCED, COPIED, ADAPTED, DISCLOSED OR DISTRIBUTED TO OTHERS, SOLD, PUBLISHED OR OTHERWISE USED WITHOUT PRIOR WRITTEN CONSENT OF AND APPROPRIATE COMPENSATION TO THE ARCHITECT. VISUAL CONTACT WITH THESE DRAWINGS OR SPECIFICATIONS SHALL CONSTITUTE CONCLUSIVE EVIDENCE OF ACCEPTANCE OF THESE RESTRICTIONS. COPYRIGHT ACS, INC. 2018

Stamp:

I HEREBY CERTIFY THAT THIS PLAN AND SPECIFICATION WAS PREPARED BY ME OR UNDER MY DIRECT SUPERVISION AND THAT I AM A DULY REGISTERED ARCHITECT OR ENGINEER UNDER THE LAWS OF THE STATE OF PROJECT STATE AS SIGNIFIED BY MY HAND AND SEAL.

Owner's Project Number:

Project Owner:

STEAK 'N SHAKE

Project Address:



1045 SE ALICE'S RD
WAUKEE, IA 50263

Issue For:

WAUKEE SET

Issue Date:

01/22/2025

DATE REVISION

1 12/17/2024 ENTITLEMENT

RESUBMITTAL

2 01/09/2025 ENTITLEMENT

RESUBMITTAL

PRINCIPAL IN CHARGE: DAVID RHODES

PROJECT MANAGER: JERRY WICK

DRAWN BY: T.KASPER

ACS PROJECT NUMBER:

SS3A0002.00

SHEET TITLE:

EXTERIOR ELEVATIONS

SCALE: As indicated

SHEET NUMBER:

A201