

EXTERIOR MATERIALS LEGEND

	BRICK B: MODULAR FULL DEPTH MANUFACTURER: INTERSTATE BRICK COLOR: ASH		STUCCO: B MANUFACTURER: DRYVIT COLOR: MATCH SW 7532 URBAN PUTTY	MORTAR FOR BRICK B MANUFACTURER: SPEC MIX COLOR: PRISM P2620 CAMEL	
	BRICK C: MODULAR FULL DEPTH MANUFACTURER: ENDICOTT COLOR: MANGANESE BROWN VELOUR		STUCCO: C MANUFACTURER: DRYVIT COLOR: MATCH SW 7675 SEALSKIN	MORTAR MANUFACTURER: SOLOMON & COLOR COLOR: SGC 85A DK CHOCOLATE	
	CAST STONE: 4" DEPTH MANUFACTURER: MARCSTONE COLOR: 157912		SPLITFACE CMU: 8X816 MANUFACTURER: COUNTY MATERIALS CO COLOR: SIENNA CREAM		COMPOSITE DECKING BOARD: MANUFACTURER: TREX COLOR: SELECT SADDLE

KEYNOTE LEGEND

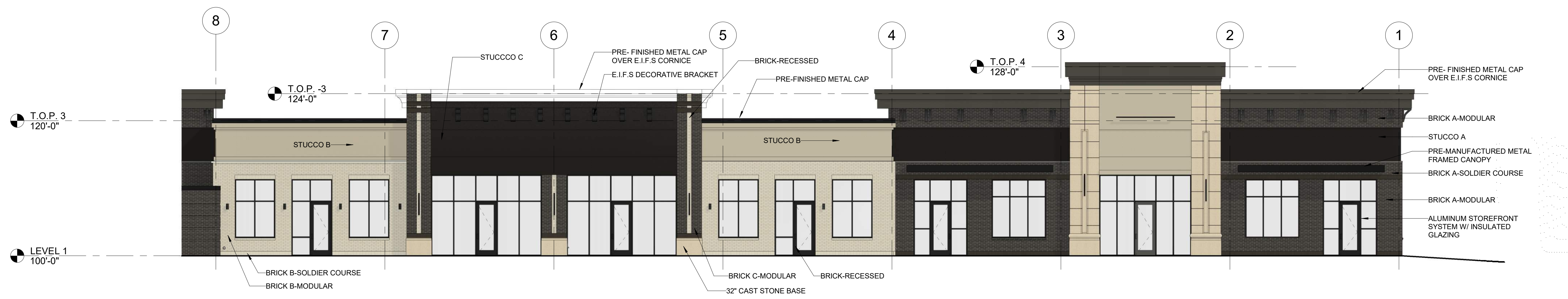
KEY	NOTE
01	BRICK A-MODULAR
02	BRICK B-MODULAR
03	BRICK C-MODULAR
04	BRICK A-SOLDIER COURSE
05	BRICK B-SOLDIER COURSE
08	BRICK-RECESSED
09	24" CAST STONE BASE
10	32" CAST STONE BASE
13	STUCCO A
17	PRE-MANUFACTURED METAL FRAMED CANOPY
18	ALUMINUM STOREFRONT SYSTEM W/ INSULATED GLAZING
19	PRE-FINISHED METAL CAP
22	PRE-FINISHED METAL CAP OVER E.I.F.S CORNICE
23	E.I.F.S DECORATIVE BRACKET
32	STUCCO B
33	STUCCO C

ELEVATION GENERAL NOTES

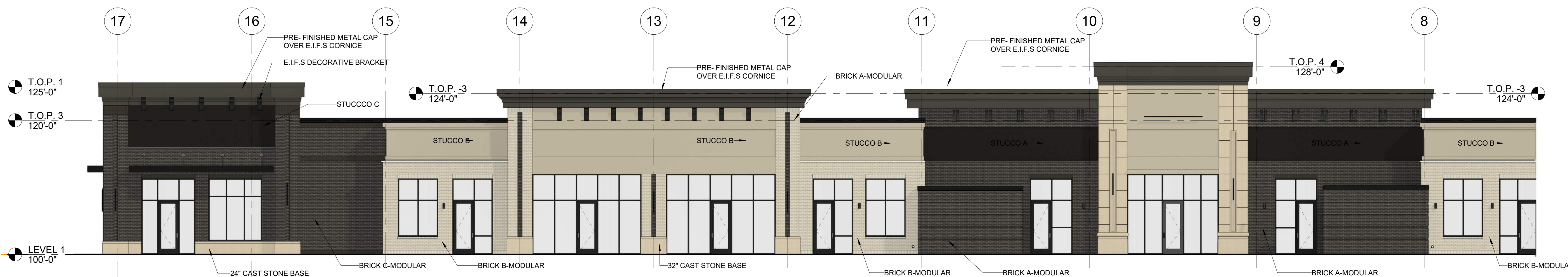
1. ARCHITECTURAL 100' - 0" = SURVEY xxx & xxx - SEE CIVIL
2. DO NOT SCALE DRAWINGS. DRAWN DIMENSIONS SHALL TAKE PRECEDENCE. NOTIFY THE ARCHITECT OF ANY DISCREPANCIES IMMEDIATELY.
3. REFER TO DOOR AND WINDOW SCHEDULES FOR MORE INFORMATION.
4. SEE CIVIL DRAWINGS FOR DRAINAGE REQUIREMENTS.
5. GRADE SOIL AWAY FROM BUILDING TO DRAIN. SEE CIVIL AND LANDSCAPE DRAWINGS FOR MORE INFORMATION.
6. EXTERIOR LIGHTING FIXTURE ARE SHOWN FOR REFERENCE. CONTRACTOR TO COORDINATE POWER WITH ELECTRICAL ENGINEER AND QUANTITIES WITH VENDOR.
7. EXTERIOR SIGNAGE IS SHOWN FOR REFERENCE ONLY. CONTRACTOR SHALL COORDINATE SIGNAGE WITH EACH INDIVIDUAL TENANT AND APPLY FOR SIGNAGE PERMIT ON EACH INSTANCE.

NOTE:

BUILDING IMAGE FOR DESIGN INSINTENT PURPOSE. THIS DRAWING IS AN ARTISTIC INTERPRETATION OF THE GENERAL APPEARANCE OF THE DESIGN. IT IS NOT INTENDED TO BE AN EXACT RENDITION."



3 EXTERIOR ELEVATION - WEST - 2
1/8" = 1'-0"



2 EXTERIOR ELEVATION - WEST - 1
1/8" = 1'-0"



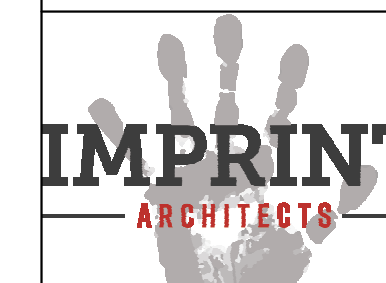
1 OVERALL EXTERIOR ELEVATION - WEST
1/16" = 1'-0"

PROJECT: KETTLESTONE LAKES COMMERCIAL
 WAUKEE, IA

DATE: 01-13-2025
 DRAWN BY: CR
 CHKD BY: JW
 REVISED:

EXTERIOR ELEVATIONS WEST

A902



617 SW 3RD ST., STE 108
 ANKENY, IOWA 50023
 PHONE: (515) 965-5336
 FAX: (515) 965-5335
 info@imprintarchitects.com

PRICING SET - NOT FOR CONSTRUCTION

