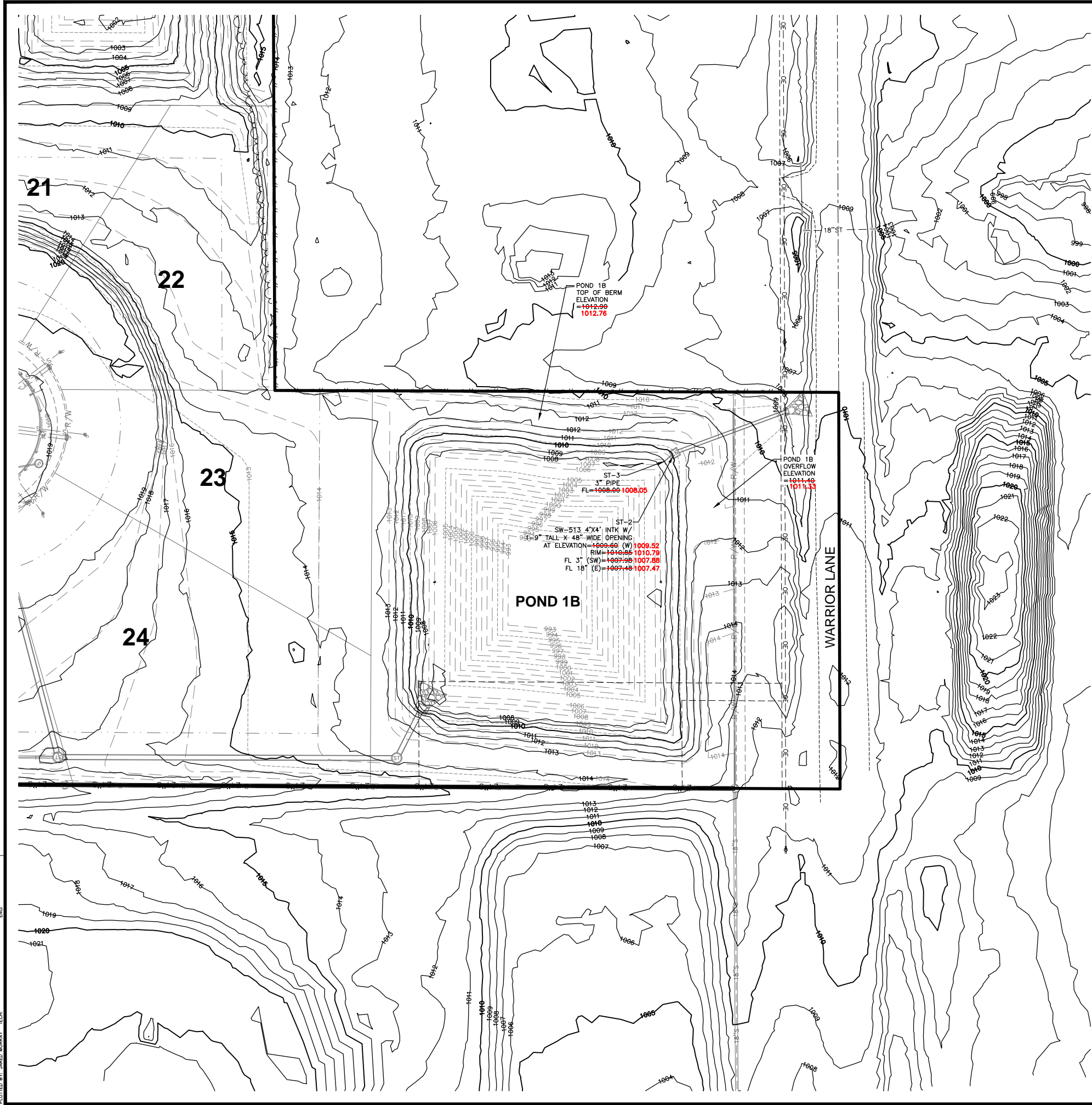


FILE: H:\2020\201616\WORK\EXHIBITS\201616-POND EXHIBIT-PLAT 1-AS-BUILT.DWG
 PLOTTED BY: MARGO MURRAY DATE: 1/3/2024 1:56 PM
 PLOT SCALE: 1"=30'

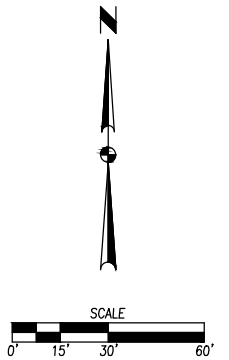


AS-BUILT POND STORAGE - POND 1B

ELEVATION	AREA, SF	INCREMENTAL STORAGE, CF	TOTAL STORAGE, CF
1008.05	20,700	0	0
1009.00	22,723	20,626	20,626
1010.00	25,069	23,896	44,522
1011.00	27,692	26,381	70,903
1011.71	29,650	20,563	91,466
1012.00	30,450	12,830	104,296

1. AS-BUILT 100-YEAR ELEVATION = 1011.71

NOTE:
 PROPOSED POND 1B REQUIRED 91,466 CF OF STORAGE AT ELEVATION = 1011.67 PER
 STORM WATER MANAGEMENT PLAN TITLED "FOX VALLEY", DATED MAY 03, 2021.



DATE

REVISIONS

FINAL SUBMITTAL 01/08/2024

2ND SUBMITTAL 11/21/2023

1ST SUBMITTAL 11/03/2023

4121 NW URBANDALE DRIVE
 URBANDALE, IA 50322
 PHONE: (515) 369-4400

TECH: JDS

CIVIL DESIGN ADVANTAGE

FOX VALLEY PLAT 1

ASBUILT POND EXHIBIT

WAUKEE, IOWA

2

2

2011.616