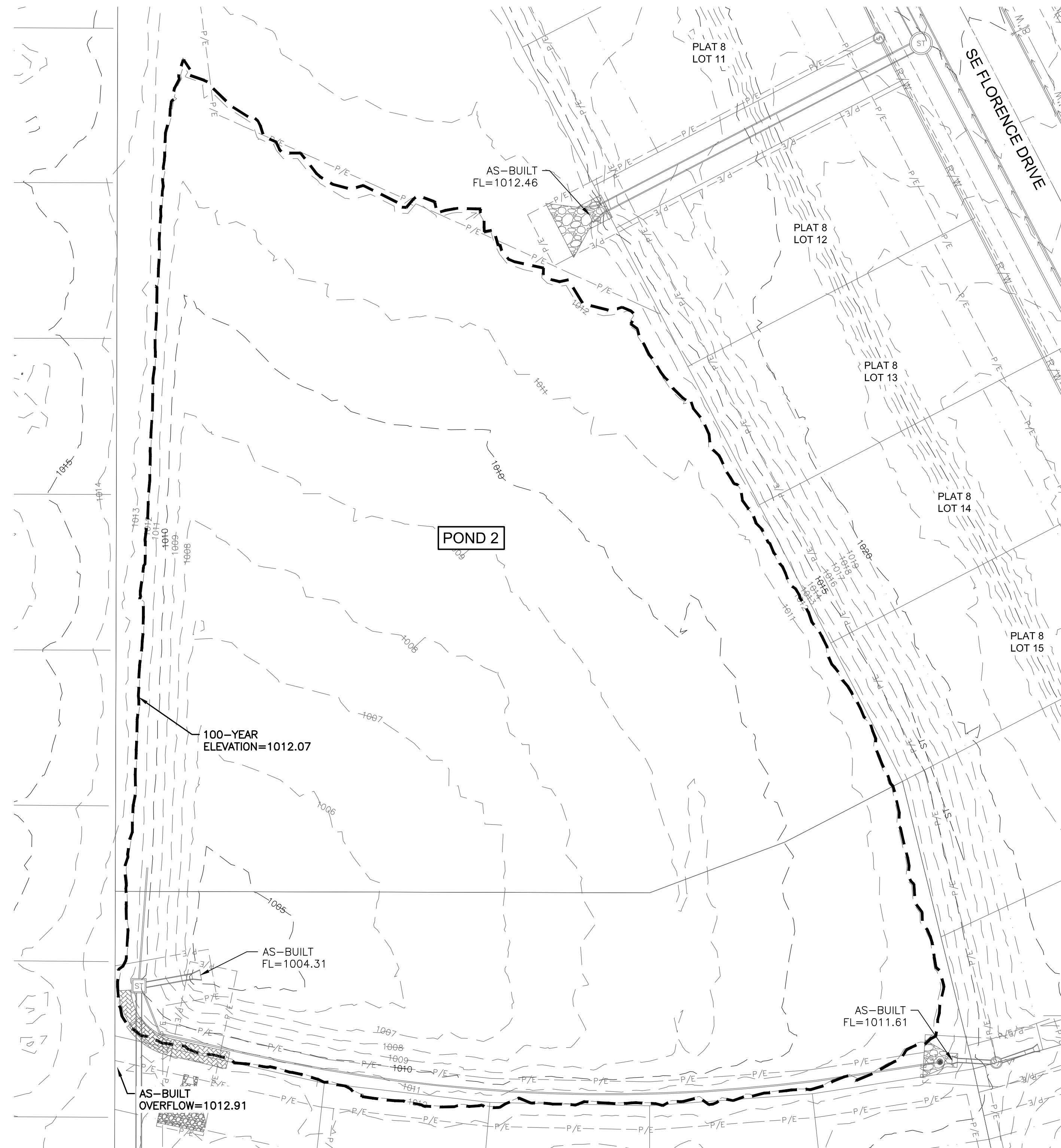


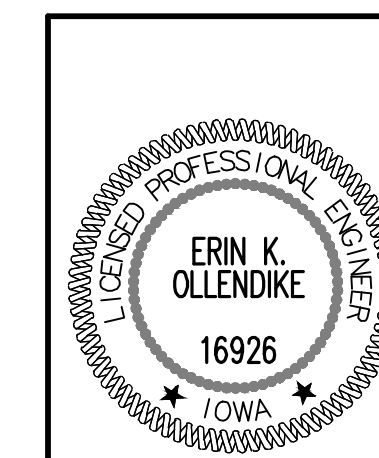
FILE: H:\2021\2104321\2104321-POND AS-BUILT 2023-07-07.DWG  
 COMMENTS:  
 DRAWN BY: ERIN K. OLLENDIKE  
 PLOTTED BY: ERIN K. OLLENDIKE  
 DATE: 7/17/2023 8:43 AM



AS-BUILT POND STORAGE - POND 2			
ELEVATION	AREA, SF	INCREMENTAL STORAGE, CF	TOTAL STORAGE, CF
1004.31	-	0	0
1005.00	1850	425	425
1006.00	7059	4174	4599
1007.00	17531	11904	16503
1008.00	28454	22771	39274
1009.00	44947	36384	75658
1010.00	63217	53818	129475
1011.00	84734	73706	203181
1012.00	101304	92886	296068
1012.90	114946	97241	393309

1. AS-BUILT 100-YEAR ELEVATION AT 303,661 CF OF STORAGE = 1012.07

**NOTE:**  
 PROPOSED POND REQUIRED 303,661 CF OF STORAGE AT ELEVATION = 1012.03  
 PER STORM WATER MANAGEMENT PLAN TITLED, "KETTLESTONE RIDGE PLAT 5"  
 DATED JANUARY 25, 2019

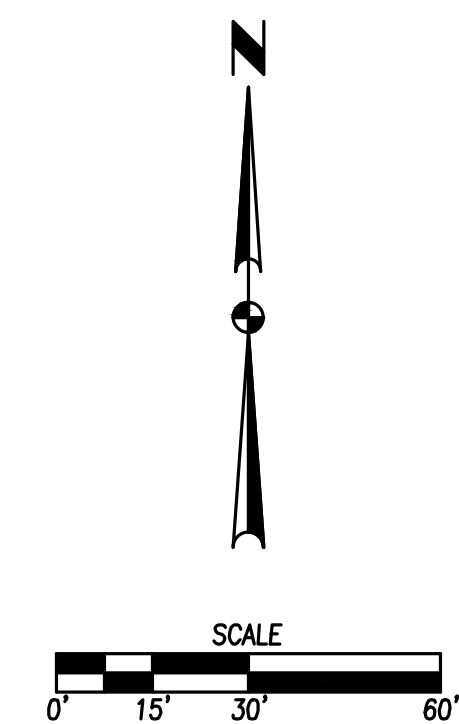


I HEREBY CERTIFY THAT THIS ENGINEERING DOCUMENT WAS PREPARED BY ME OR UNDER MY DIRECT PERSONAL SUPERVISION AND THAT I AM A DULY LICENSED PROFESSIONAL ENGINEER UNDER THE LAWS OF THE STATE OF IOWA.

*Erin K. Ollendike* 07/12/2023  
 ERIN K. OLLENDIKE, P.E. DATE

MY LICENSE RENEWAL DATE IS DECEMBER 31, 2023  
 PAGES OR SHEETS COVERED BY THIS SEAL:

THIS SHEET



DATE: 07/07/2023

REVISIONS: PREPARED

TECH: ME

ENGINEER: EO

4121 NW URBANDALE DRIVE  
 URBANDALE, IA 50322  
 PHONE: (515) 369-4400 FAX: (515) 369-4410

**ESA**  
 CIVIL DESIGN ADVANTAGE

**KETTLESTONE RIDGE**  
**DETENTION AS-BUILT**

WAUKEE, IOWA

1/1  
 2104.321