

2 South Elevation - Left Side of Building  
1/4"=1'-0"

MATERIAL LABEL	MATERIAL DESCRIPTION
BRK-1	GLEN-GERY BRICK, MODULAR SIZE LAID AS INDICATED ON DRAWINGS. COLOR: REDSTONE ANTIQUE. MORTAR: STANDARD GREY
STN-1	GLEN-GERY, STACKED CULTURED STONE LAID IN ASHLAR PATTERN. COLOR: CASEY'S GRAY. MORTAR: STANDARD GREY
ALM-1	PRE-FINISHED ALUMINUM WALL CAP PROVIDED BY ARNING. COLOR: BLACK
ALM-2	PRE-FINISHED ALUMINUM TRIM FLASHING PROVIDED BY ARNING. COLOR: BLACK
ALM-3	PRE-FINISHED ALUMINUM TRIM FLASHING PROVIDED BY ARNING. COLOR: SILVER
ALM-4	PRE-FINISHED ALUMINUM SCREEN WALL. COLOR: DARK BRONZE
ACM-1	ALUMINUM COMPOSITE METAL PANEL. COLOR: CASEY'S RED
SFT-1	KAWNEER 451T THERMALLY BROKEN ALUMINUM STOREFRONT WITH #40 DARK BRONZE ANODIZED FINISH. 1" BRONZE TINTED INSULATED TEMPERED GLASS WITH LOW-E COATING ON #3 SURFACE
HMD-1	HOLLOW METAL DOOR AND FRAME. COLOR: MATCH KAWNEER #40 DARK BRONZE


- ### General Notes
- REVIEW AND COORDINATE WITH ALL DETAIL PAGES REFERENCED ON THIS PLAN. NOTIFY ARCHITECT AND OWNER OF DISCREPANCIES
  - RELATED DRAWING SHEETS:** REFER TO THE FOLLOWING:  
AL-101: FOR BUILDING LOCATION ON SITE  
AL-601: FOR INFORMATION RELATING TO SIGNAGE  
A-101: PRIMARY FLOOR PLAN FOR CONSTRUCTION LAYOUT  
A-121: ROOF PLAN/ROOF TOP EQUIPMENT  
A-601: DOOR & WINDOW SCHEDULES AND NOTES  
S-101: FOOTINGS AND FOUNDATIONS  
S-102: ROOF TRUSSES
  - WORKING POINT:** THE WORKING POINT (WP) INDICATED ON THE DRAWINGS IS RELATIVE TO THE FACE OF SHEATHING ON THE EXTERIOR WALL AND IS A COMMON POINT OF REFERENCE WHERE EVER USED IN THESE DRAWINGS
  - ALL VENT PENETRATIONS ON BACK OF BACKSIDE OF ROOF.
  - PROPOSED SIGNAGE WILL BE REVIEWED BY THE COMMUNITY DEVELOPMENT DEPARTMENT ON A SEPARATE APPLICATION

### Roof Top Equipment List

RTUs	
Package Unit #1	Rheem RGEDZT090ACG20BDALK3
Package Unit #2	Rheem RGEDZT090ACG20BDALK3
Package Unit #3	CaptiveAire CAS-HVAC2-1,200-18-10T
Exhaust Fan	
Exhaust Fan 1	CaptiveAire DU85HFA
Refrigeration System #1	Condensing Unit CCH0035MCACZ Evaporator CEL0155AS6AMA
System #2	Condensing Unit CCH0030MCACZ Evaporator CEL0130BS6EMA
System #3	Condensing Unit CCH0035LCACZ Evaporator CEL0100BS6EEA
System #4	Condensing Unit CCH0035LCACZ Evaporator CEL0100BS6EEA
System #5	Condensing Unit CCH0010MCACZ Evaporator CEL0095AS6AMA




1 East Elevation - Front of Building  
1/4"=1'-0"




**ELDS DESIGN SERVICES**

Architecture | Engineering | Surveying

2323 Dixon Street, Des Moines, Iowa 50316 | P.O. Box 4626 Des Moines, Iowa 50305 | P: 515-265-8196 F: 515-266-2259  
ELDS JOB NO. 24-013

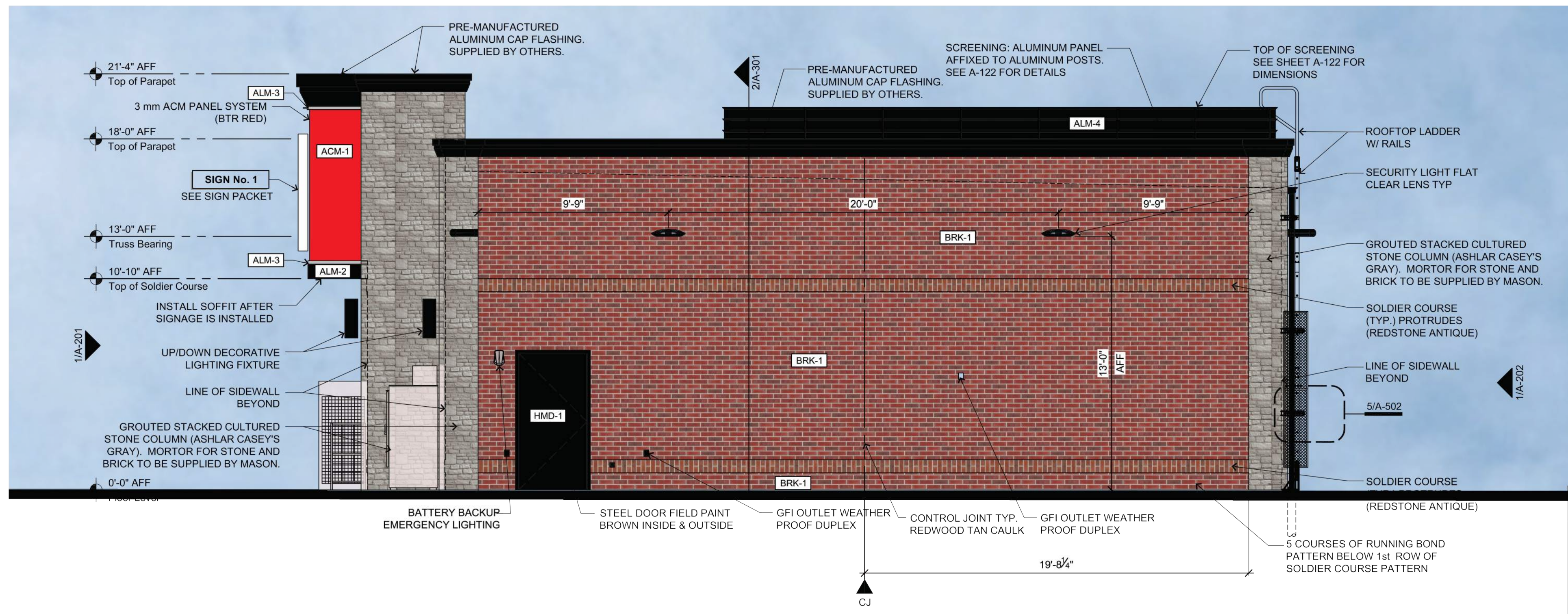


**Casey's**



CASEY'S CONSTRUCTION DIVISION  
One Convenience Blvd., P.O. Box 3001, Ankeny, Ia. 50021 515-965-6100

PROJECT:	NWC Grand Prairie Pkwy & SE Kettlestone Waukee, IA	DATE:	05/29/24	REVISION:	01/02/24	DRAWING INFORMATION	EXTERIOR ELEVATIONS
PROTOTYPE AND VERSION:	2024 - U4 - V.02	DATE:	02/24/25	REVISION:	04/29/25		
DESIGNED BY:	Arlon Goforth III	CHECKED BY:					<b>A-201</b>

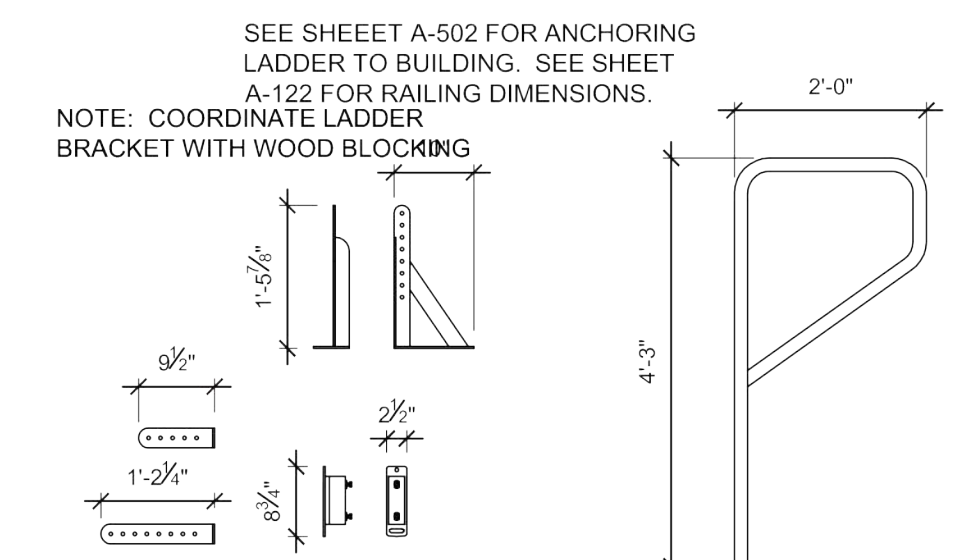


MATERIAL LABEL	MATERIAL DESCRIPTION
BRK-1	GLEN-GERY BRICK, MODULAR SIZE LAID AS INDICATED ON DRAWINGS. COLOR: REDSTONE ANTIQUE. MORTAR: STANDARD GREY
STN-1	GLEN-GERY, STACKED CULTURED STONE LAID IN ASHLAR PATTERN. COLOR: CASEY'S GRAY. MORTAR: STANDARD GREY
ALM-1	PRE-FINISHED ALUMINUM WALL CAP PROVIDED BY ARNING. COLOR: BLACK
ALM-2	PRE-FINISHED ALUMINUM TRIM FLASHING PROVIDED BY ARNING. COLOR: BLACK
ALM-3	PRE-FINISHED ALUMINUM TRIM FLASHING PROVIDED BY ARNING. COLOR: SILVER
ALM-4	PRE-FINISHED ALUMINUM SCREEN WALL. COLOR: DARK BRONZE
ACM-1	ALUMINUM COMPOSITE METAL PANEL. COLOR: CASEY'S RED
SFT-1	KAWNEER 451T THERMALLY BROKEN ALUMINUM STOREFRONT WITH #40 DARK BRONZE ANODIZED FINISH. 1\"/>
HMD-1	HOLLOW METAL DOOR AND FRAME. COLOR: MATCH KAWNEER #40 DARK BRONZE

	FRONT		LEFT		RIGHT		REAR	
	AREA	% OF TOTAL	AREA	% OF TOTAL	AREA	% OF TOTAL	AREA	% OF TOTAL
TOTAL	2030.61		901.79		901.79		1581.79	
BRICK	588.76	28.99%	406.15	45.04%	647.26	71.78%	1439.18	90.98%
STONE	203.63	10.03%	152.99	16.97%	152.99	16.97%	44.13	2.79%
ACM	419.54	20.66%	20.46	2.27%	20.46	2.27%	0	0.00%
GLASS/DOOR	624.63	30.76%	288.58	29.78%	27.47	3.05%	20.87	1.32%
METAL TRIM	194.05	9.56%	53.61	5.94%	53.61	5.94%	77.61	4.91%

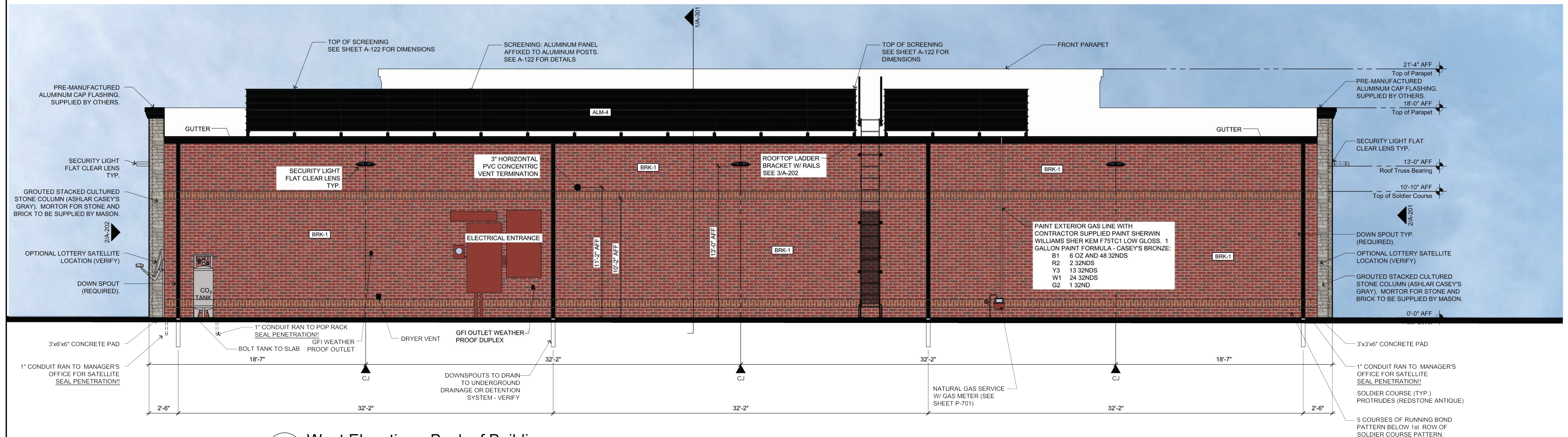
### General Notes

- REVIEW AND COORDINATE WITH ALL DETAIL PAGES REFERENCED ON THIS PLAN. NOTIFY ARCHITECT AND OWNER OF DISCREPANCIES
- RELATED DRAWING SHEETS:** REFER TO THE FOLLOWING:  
AL-101: FOR BUILDING LOCATION ON SITE  
AL-601: FOR INFORMATION RELATING TO SIGNAGE  
A-101: PRIMARY FLOOR PLAN FOR CONSTRUCTION LAYOUT  
A-121: ROOF PLAN/ROOF TOP EQUIPMENT  
A-601: DOOR & WINDOW SCHEDULES AND NOTES  
S-101: FOOTINGS AND FOUNDATIONS  
S-102: ROOF TRUSSES
- WORKING POINT:** THE WORKING POINT (WP) INDICATED ON THE DRAWINGS IS RELATIVE TO THE FACE OF SHEATHING ON THE EXTERIOR WALL AND IS A COMMON POINT OF REFERENCE WHERE EVER USED IN THESE DRAWINGS
- ALL VENT PENETRATIONS ON BACK OF BACKSIDE OF ROOF.



**2** North Elevation - Right Side of Building  
1/4"=1'-0"

**3** Ladder Bracket  
1/2"=1'-0"



**1** West Elevation - Back of Building  
1/4"=1'-0"

**PELDS DESIGN SERVICES**  
Architecture | Engineering | Surveying  
2323 Dixon Street, Des Moines, Iowa 50316 | P.O. Box 4626 Des Moines, Iowa 50305 | P: 515-265-8196 F: 515-266-2259  
PELDS JOB NO. 24-013

---

**CASEY'S CONSTRUCTION DIVISION**  
One Convenience Blvd., P.O. Box 3001, Ankeny, Ia. 50021 515-965-6100

PROJECT: NWC Grand Prairie Pkwy & SE Kettlestone Waukee, IA	PUBLISHED: 05/29/24 REVISIONS: 01/02/24 02/24/25	DRAWING INFORMATION: EXTERIOR ELEVATIONS
--	--	--

2024 - U4 - V.02  
A-202

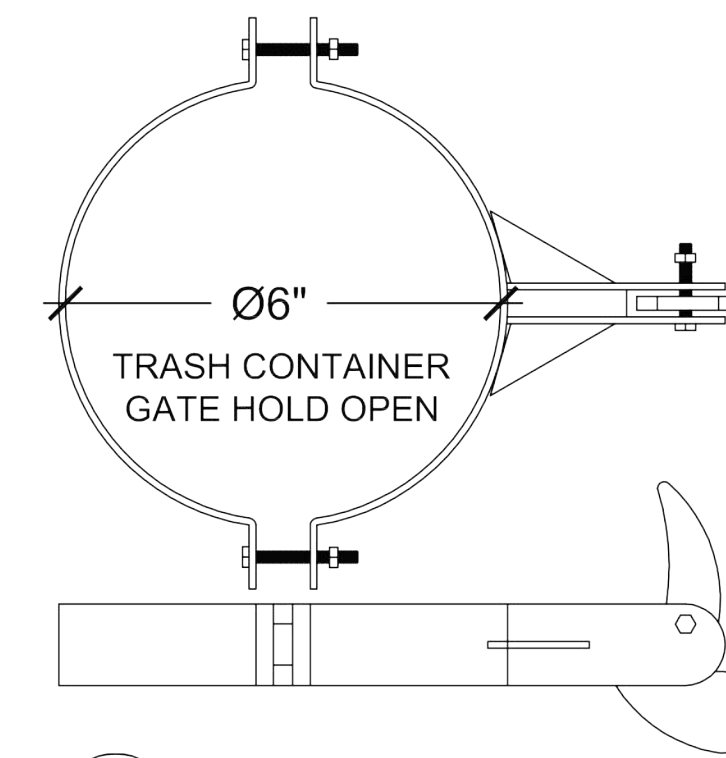
## General Notes

1. RELATED SHEETS: FOR ADDITIONAL INFORMATION NOT DIRECTLY REFERENCED, SEE THE FOLLOWING SHEETS:

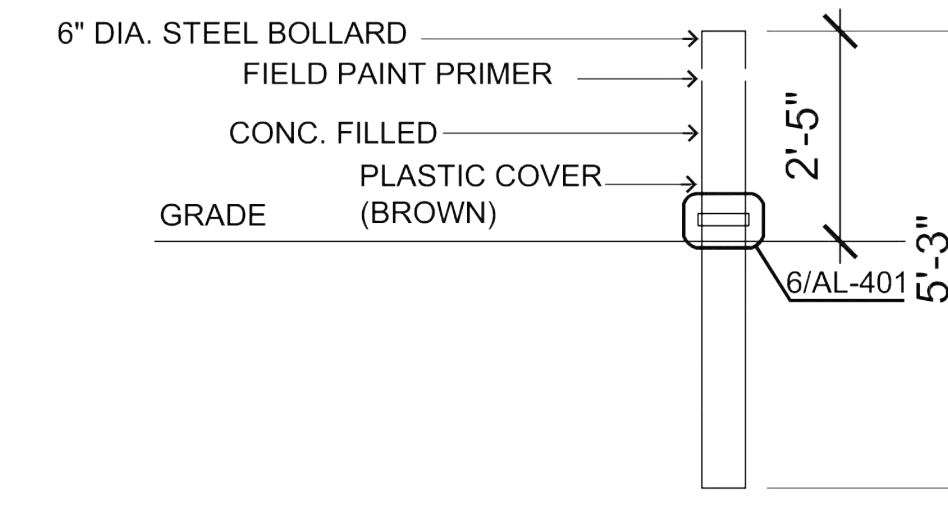
G-001 FOR GENERAL PROJECT NOTES  
AL101 FOR GENERAL SITE PLAN

## Construction Notes

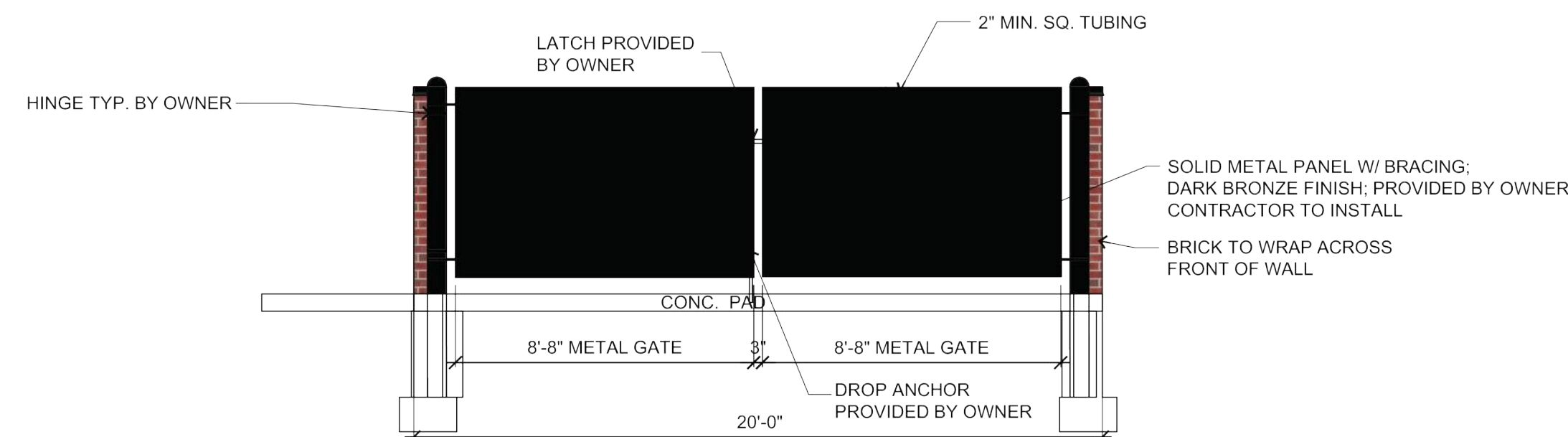
- 1) ALL DOMES ON FENCE POSTS ARE TO BE FASTENED SO THAT THEY CAN NOT BE REMOVED.
- 2) VERIFY SCREENING WITH LOCAL AUTHORITY.
- 3) CONTRACTOR TO PRIME ALL 6" BOLLARDS PRIOR TO FINISHED PAINT COAT.
- 4) DUMPSTER ENCLOSURE WALLS WILL BE 4" BLOCK PURCHASED BY CONTRACTOR



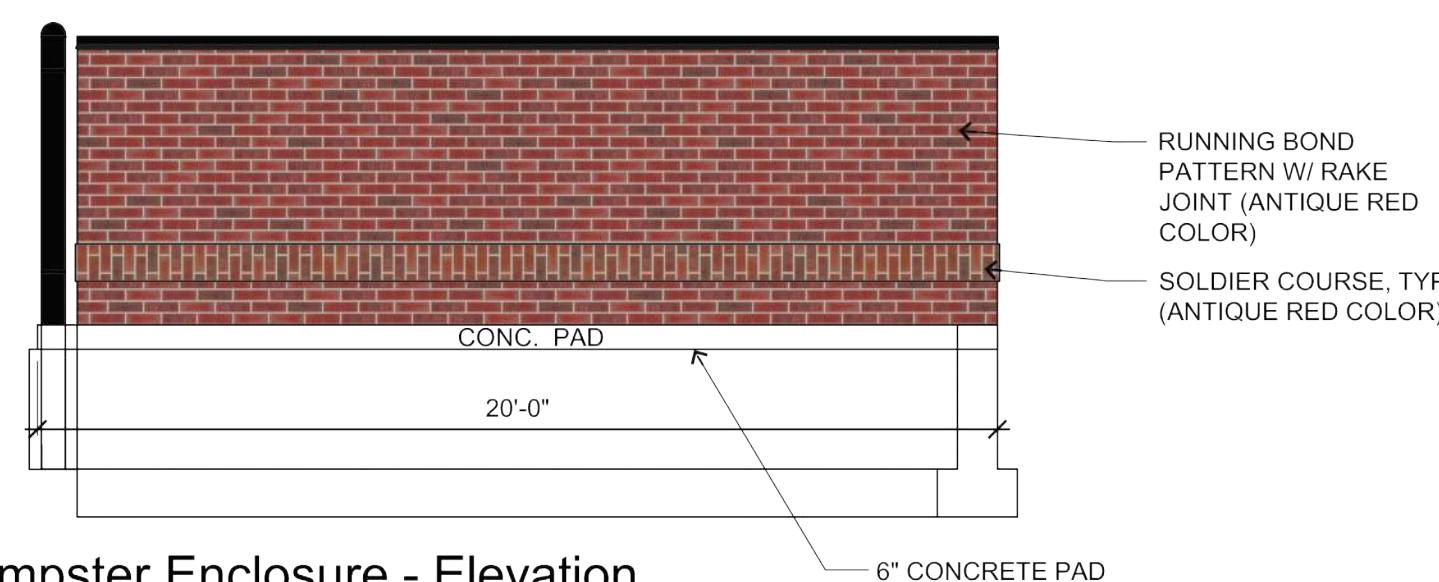
6 Gate Open Holder  
No Scale



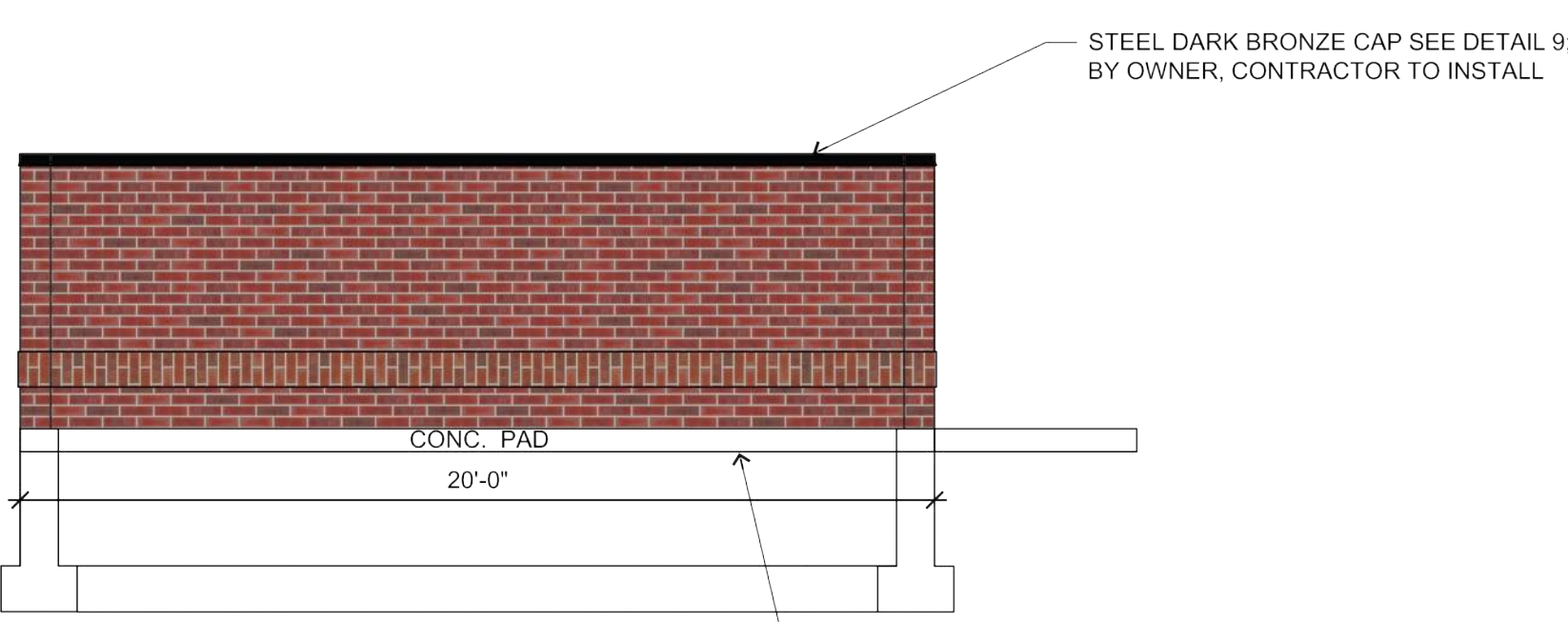
7 Bollard Detail  
No Scale



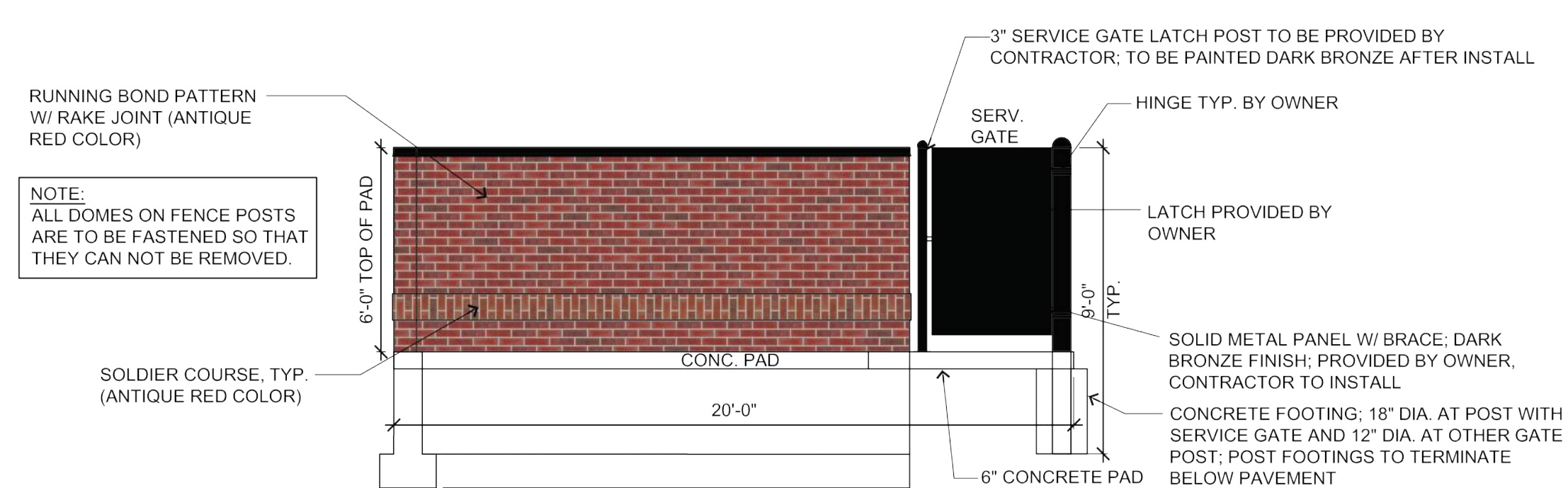
5 Dumpster Enclosure - Elevation  
1/4" = 1'-0"



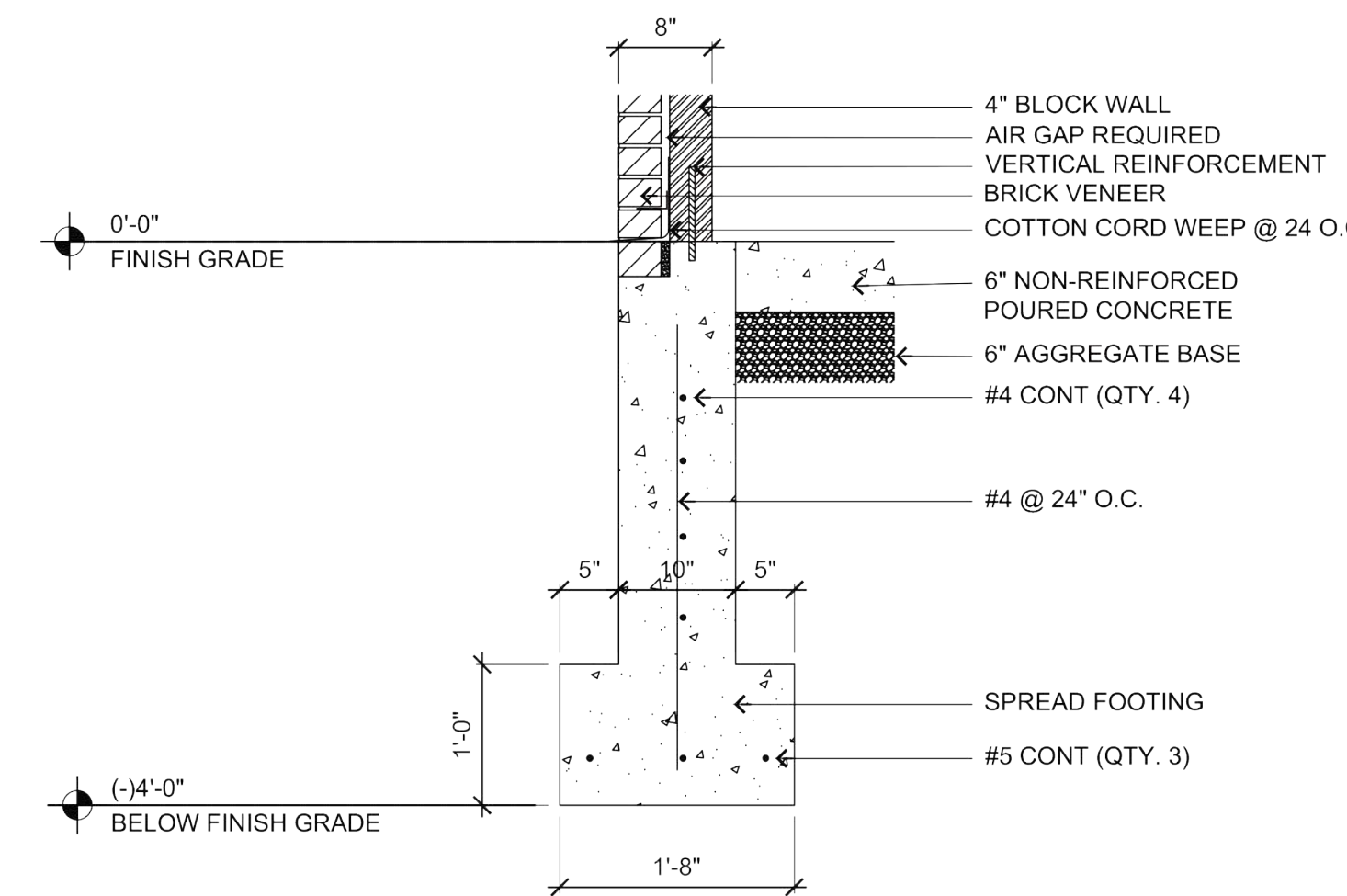
4 Dumpster Enclosure - Elevation  
1/4" = 1'-0"



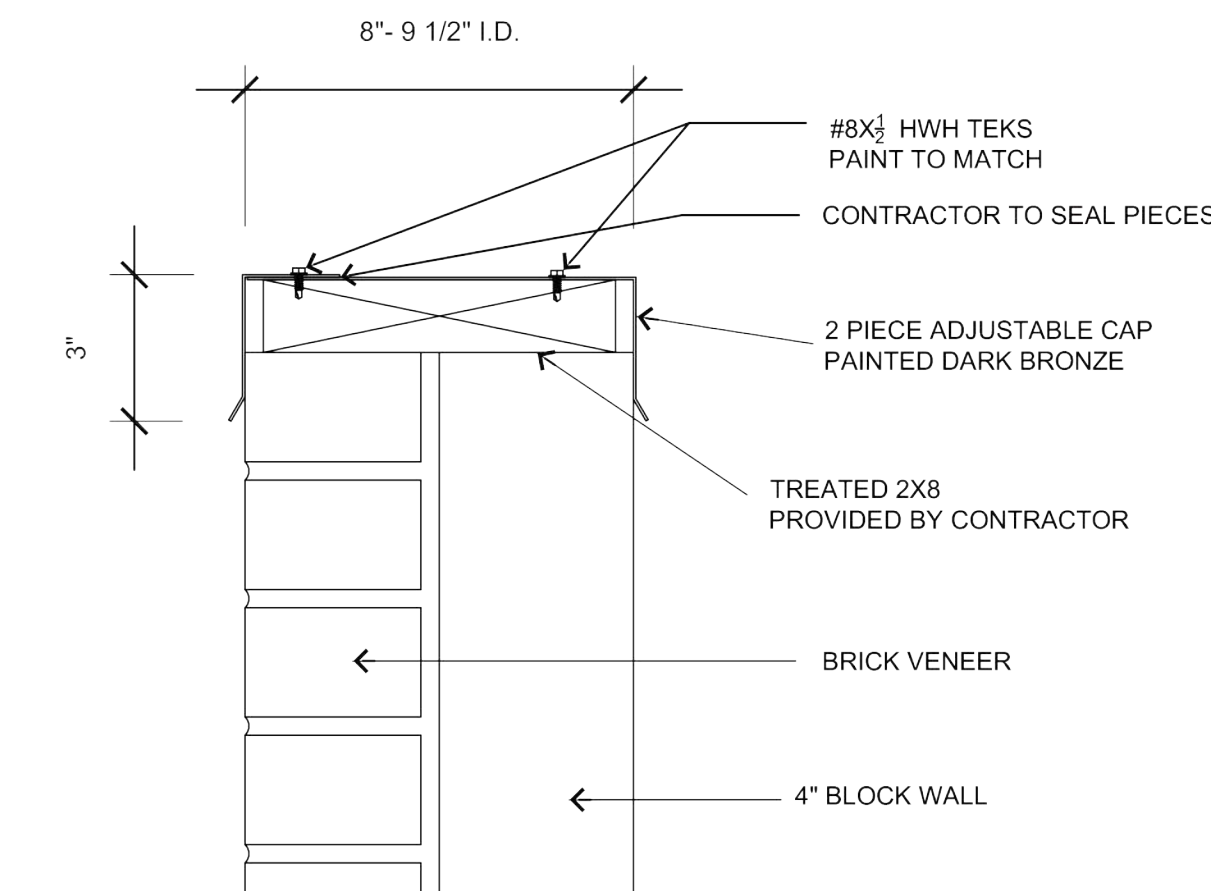
3 Dumpster Enclosure - Elevation  
1/4" = 1'-0"



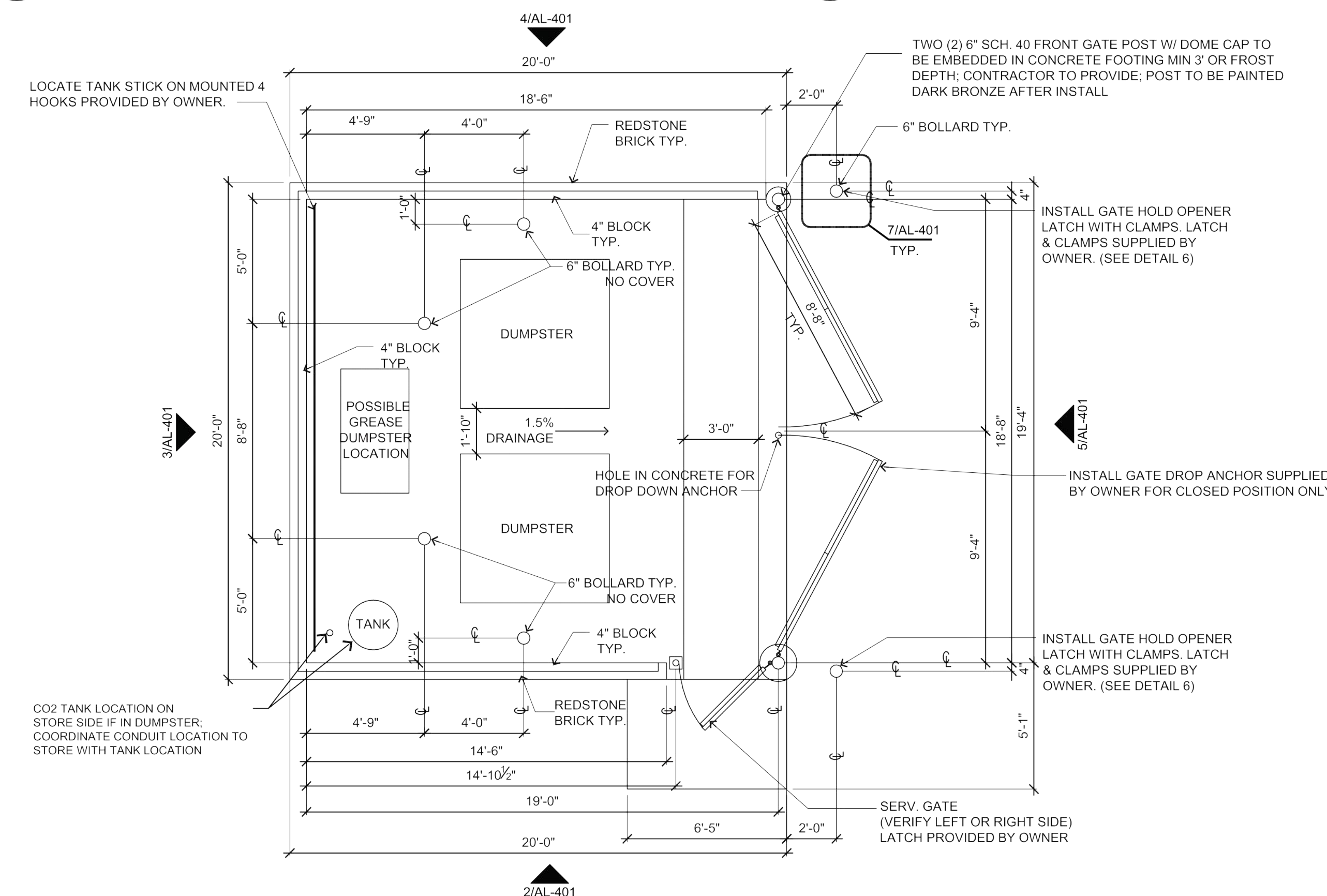
2 Dumpster Enclosure - Elevation  
1/4" = 1'-0"



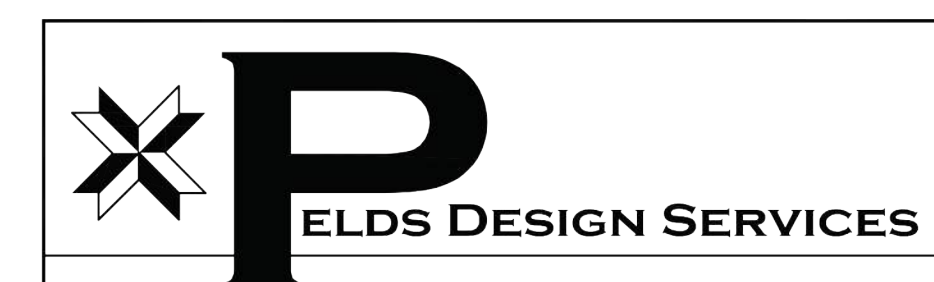
8 Spread Footing Detail  
No Scale



9 Adjustable Dumpster Wall Cap  
No Scale



1 Dumpster Plan  
1/4" = 1'-0"



2323 Dixon Street, Des Moines, Iowa 50316 | P.O. Box 4526 Des Moines, Iowa 50305 | P: 515-265-8196 F: 515-266-2259  
PELDS JOB NO. 24-013



One Convenience Blvd., Ankeny, IA. 50021 515-965-6100

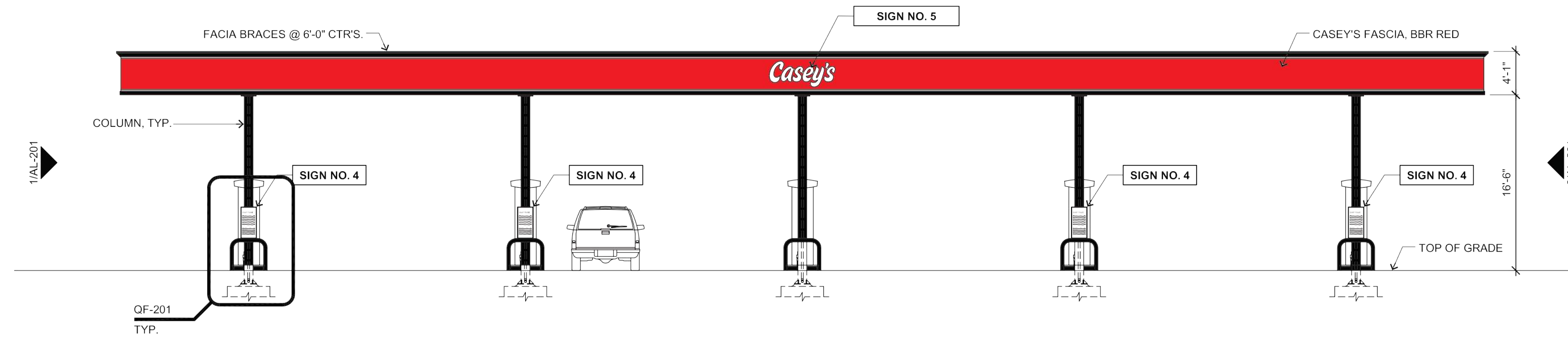
PROJECT:	DATE:	DRAWING INFORMATION:
NWC Grand Prairie Pkwy & SE Kettlestone Waukee, IA	08/20/24 02/24/25	DUMPSTER ENCLOSURE
CONSTRUCTION DIVISION		AL-401
DESIGNED BY: B. RAHN	CHECKED BY:	

**\*\*VERIFY ALL SIGNAGE WITH SIGN PERMITS\*\***

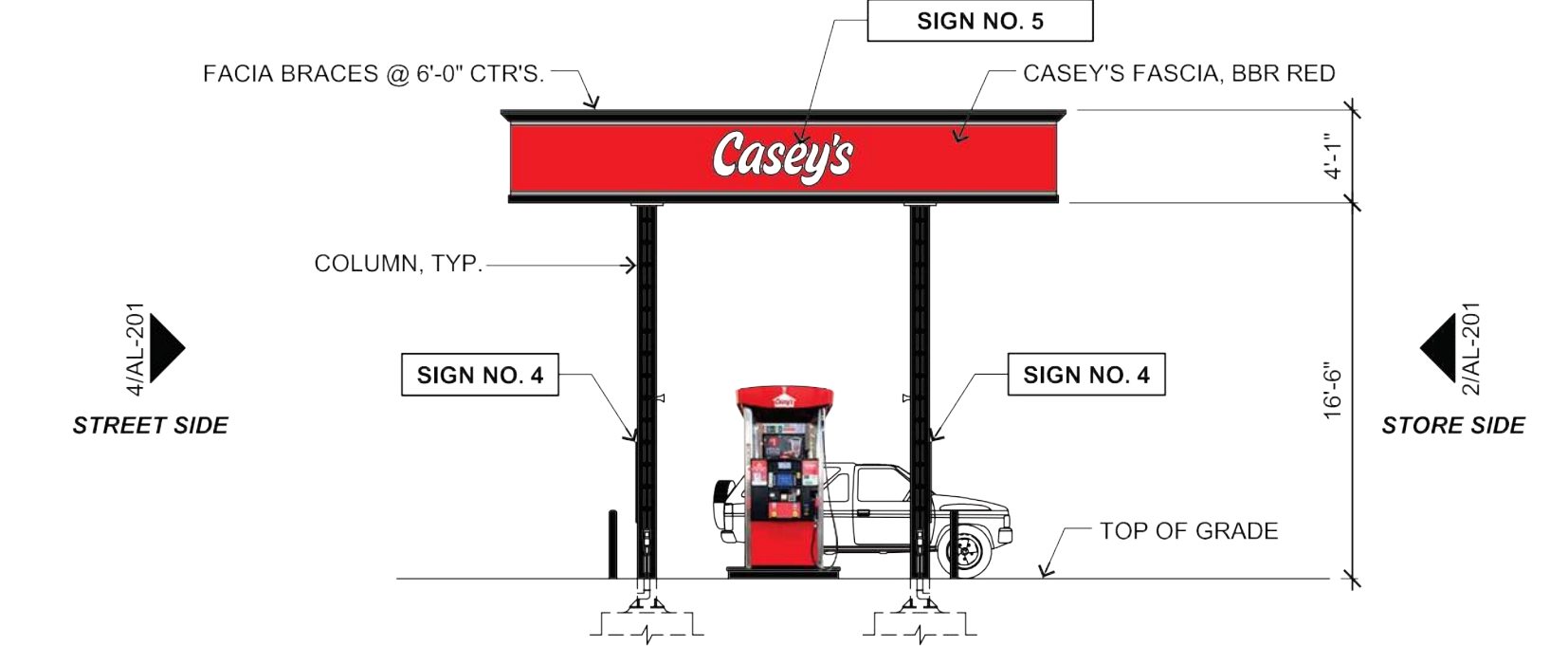
Canopy										
Sign #	Sign	Type	Location	Illumination	Dimensions					
					Bottom	Top	Width	Height	Area Ft <sup>2</sup>	Quantity
5	House Logo	Surface	Canopy Side	Internal	17' 3-1/2"	21' 3-1/2"	5' 8-7/8"	4' 0"	17.49	2
5	House Logo	Surface	Canopy Front	Internal	17' 3-1/2"	21' 3-1/2"	5' 8-7/8"	4' 0"	17.49	1
4	Snap Frame	Advertising	Canopy Column	N/A	3' 0"	7' 0-1/2"	2' 4"	3' 8"	8.56	8
<b>Total</b>									<b>120.95</b>	

**General Notes**

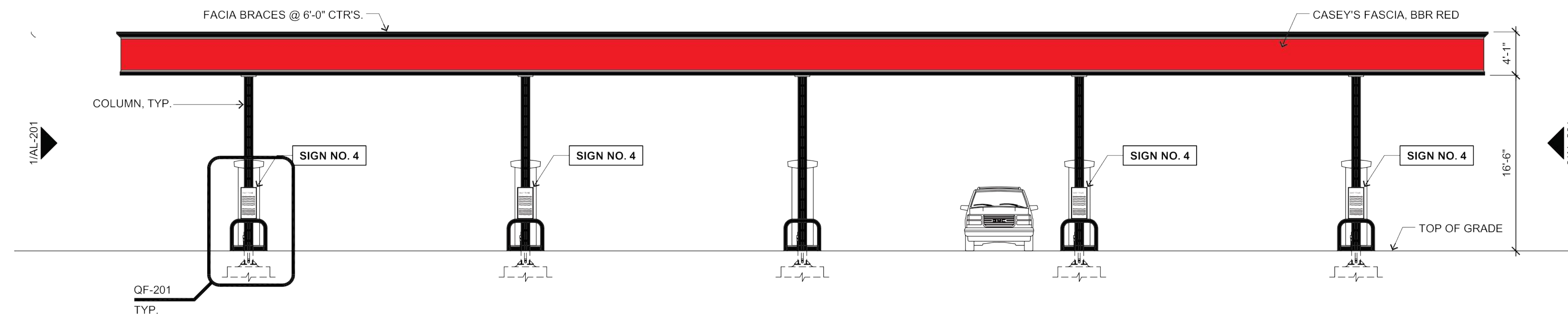
- RELATED SHEETS:** FOR ADDITIONAL INFORMATION NOT DIRECTLY REFERENCED, SEE THE FOLLOWING SHEETS:  
 G-001 FOR GENERAL PROJECT NOTES  
 AL-101 FOR GENERAL SITE PLAN  
 Sign Packet FOR SIGNAGE SCHEDULE AND NOTES  
 QF-Series FOR DESIGN AND DETAILS RELATED TO FUELING FACILITY
- GASOLINE ISLAND CANOPY:** REVIEW SHOP DRAWINGS PROVIDED BY CANOPY SUPPLIER AND ADVISE CASEY'S CONSTRUCTION MANAGER OF ANY DISCREPANCIES
- EMERGENCY GAS SHUT OFFS:** REFER TO SHEETS A-201, AQ-101 & E-101 FOR EMERGENCY SHUT OFF LOCATIONS.



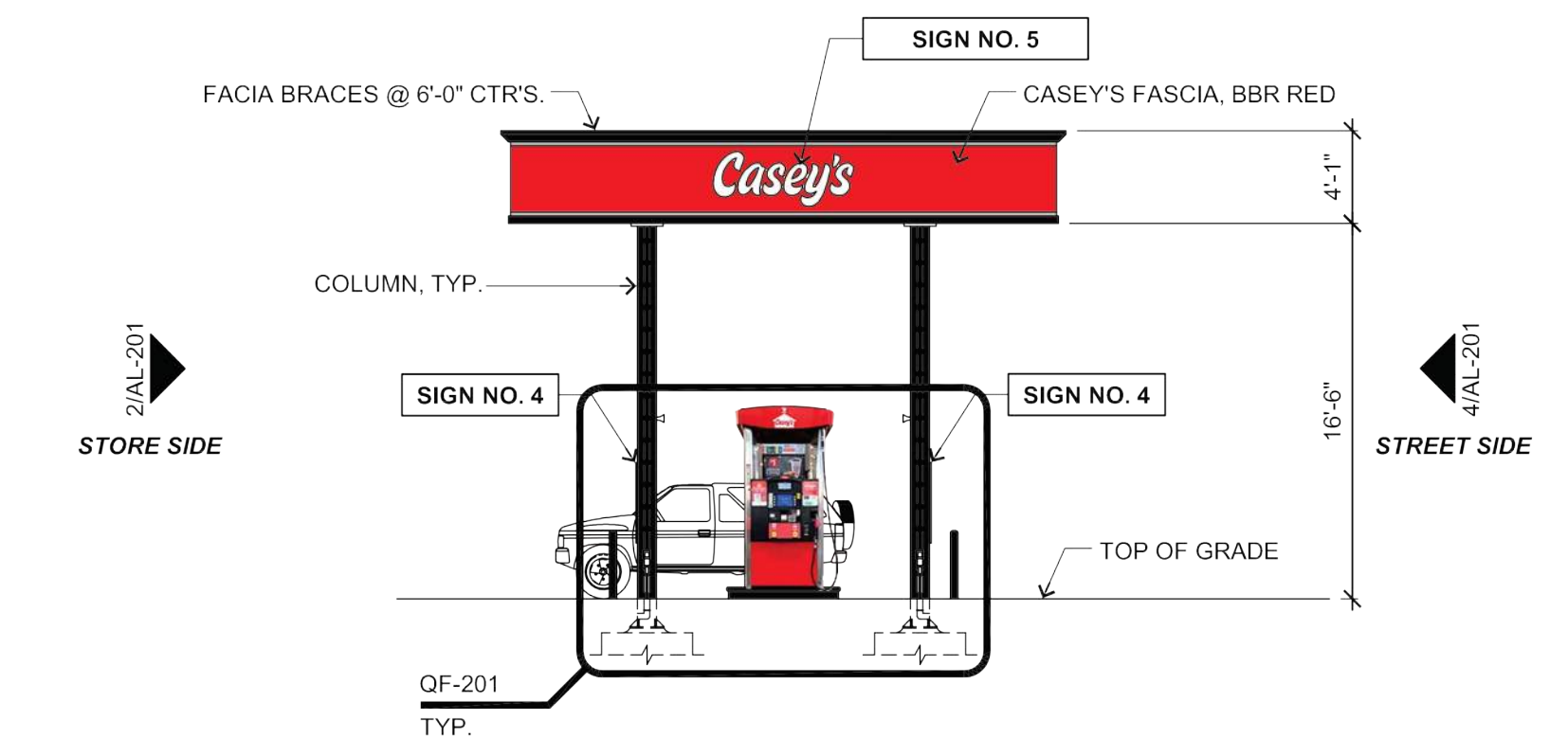
**4** Pump Island Canopy - (Street Side)  
1/8" = 1'-0"



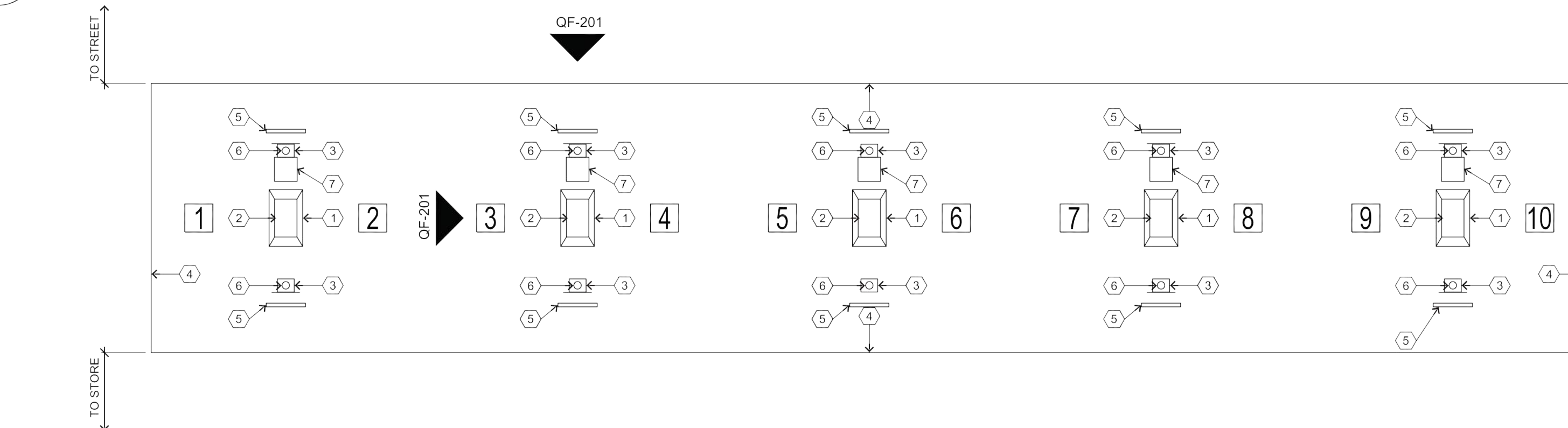
**3** Pump Island Canopy - Right Side Elevation  
1/8" = 1'-0"



**2** Pump Island Canopy - (Store Side)  
1/8" = 1'-0"




**1** Pump Island Canopy - Left Side Elevation  
1/8" = 1'-0"






**5** Canopy Layout Plan  
Not To Scale

**Keyed Canopy Layout Plan Notes**

- FUEL ISLANDS**
- FUEL DISPENSERS:** SUPPLIED BY OWNER
- CANOPY COLUMN:** SUPPLIED BY CANOPY MFG.
- EDGE OF CANOPY:** ABOVE
- STEEL GUARD PIPE:** SET INTO CONC SLAB AS INDICATED IN DETAIL ELEVATIONS (2 PER ISLAND)
- INTERNAL DOWNSPOUTS:** ROUTE THROUGH COLUMNS AND UNDERGROUND TO STORM SEWER OR DETENTION IF APPLICABLE
- TRASH CAN AND WASH BUCKETS**
- PUMP LABELS:** MOUNTED ON CANOPY COLUMNS



2323 Dixon Street, Des Moines, Iowa 50316 | P.O. Box 4626 Des Moines, Iowa 50305 | P: 515-265-8196 F: 515-266-2259  
 PELDS JOB NO. 24-013

**CASEY'S CONSTRUCTION DIVISION**  
 One Convenience Blvd., Ankeny, IA. 50021 515-965-6100

PROJECT: NWC Grand Prairie Pkwy & SE Kettlestone Waukee, IA	PUBLISHED: 08/20/24 CHECKED BY: 02/24/25	DRAWING INFORMATION: GASOLINE ISLAND CANOPY ELEVATIONS
DRAWING INFORMATION: CONSTRUCTION DIVISION		<b>AL-201</b>
DESIGNED BY: B. RAHN		CHECKED BY: